



LOWER SATSOP RESTORATION AND PROTECTION PROGRAM

Protect, Preserve, Restore

* Farmland * Essential Infrastructure * River/Floodplain Functions & Habitat

November 7, 2019



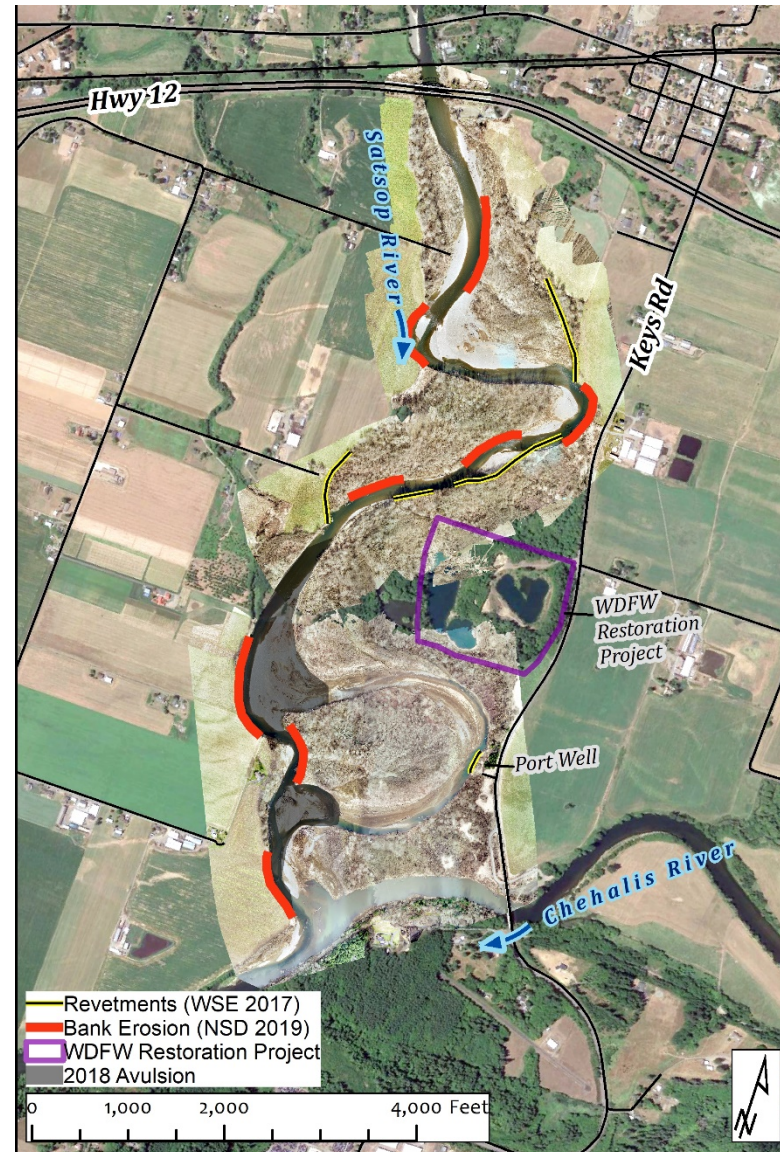
Grays Harbor
Conservation
District

your window to healthy lands

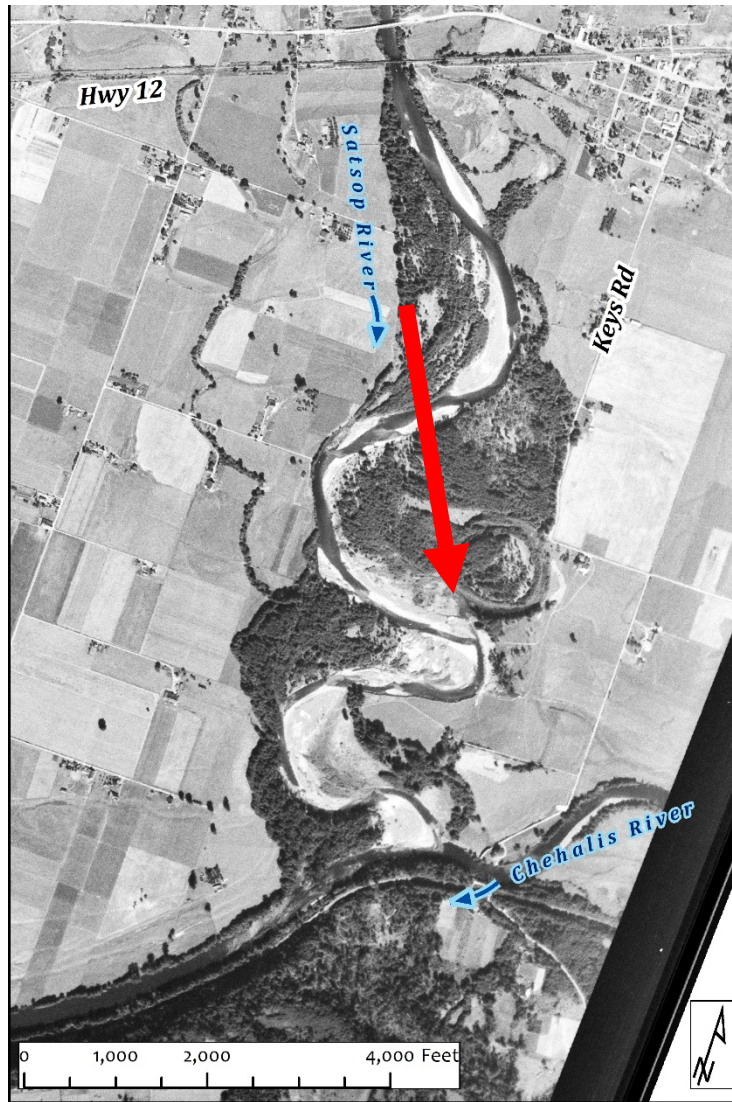


Issues

- Bank Erosion
- Revetments
- Keys Road
- Port Well
- WDFW Restoration Project
- 2018 Avulsion
- Community Frustration

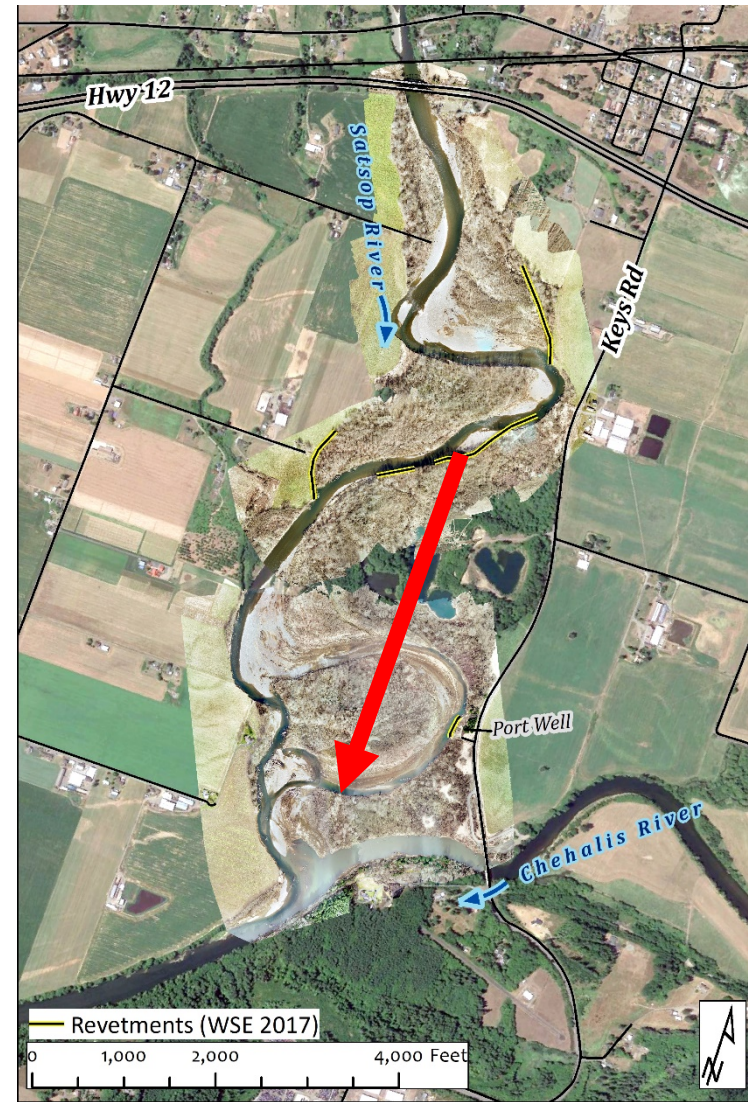


Historical Context



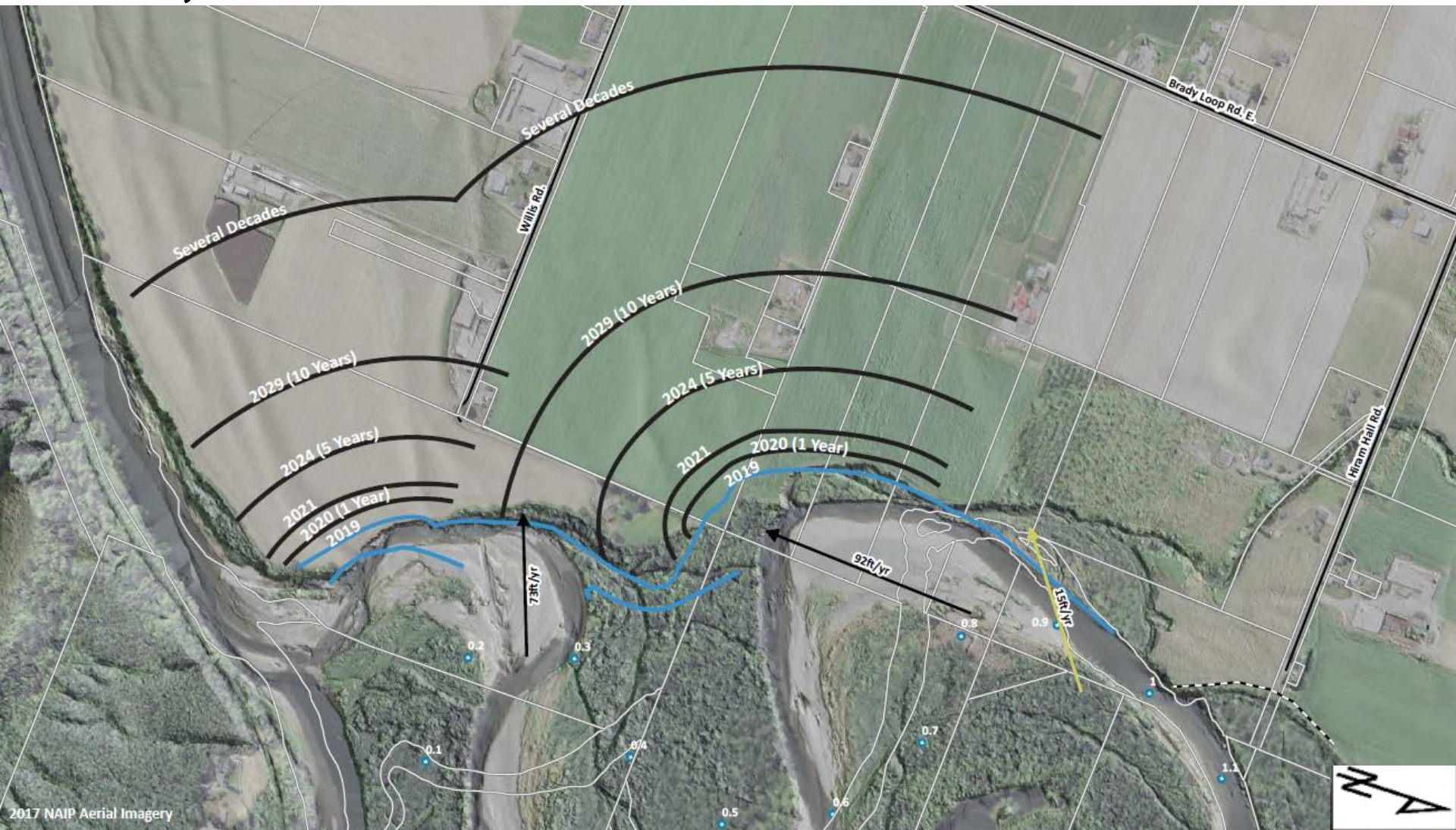
2

1953



2019

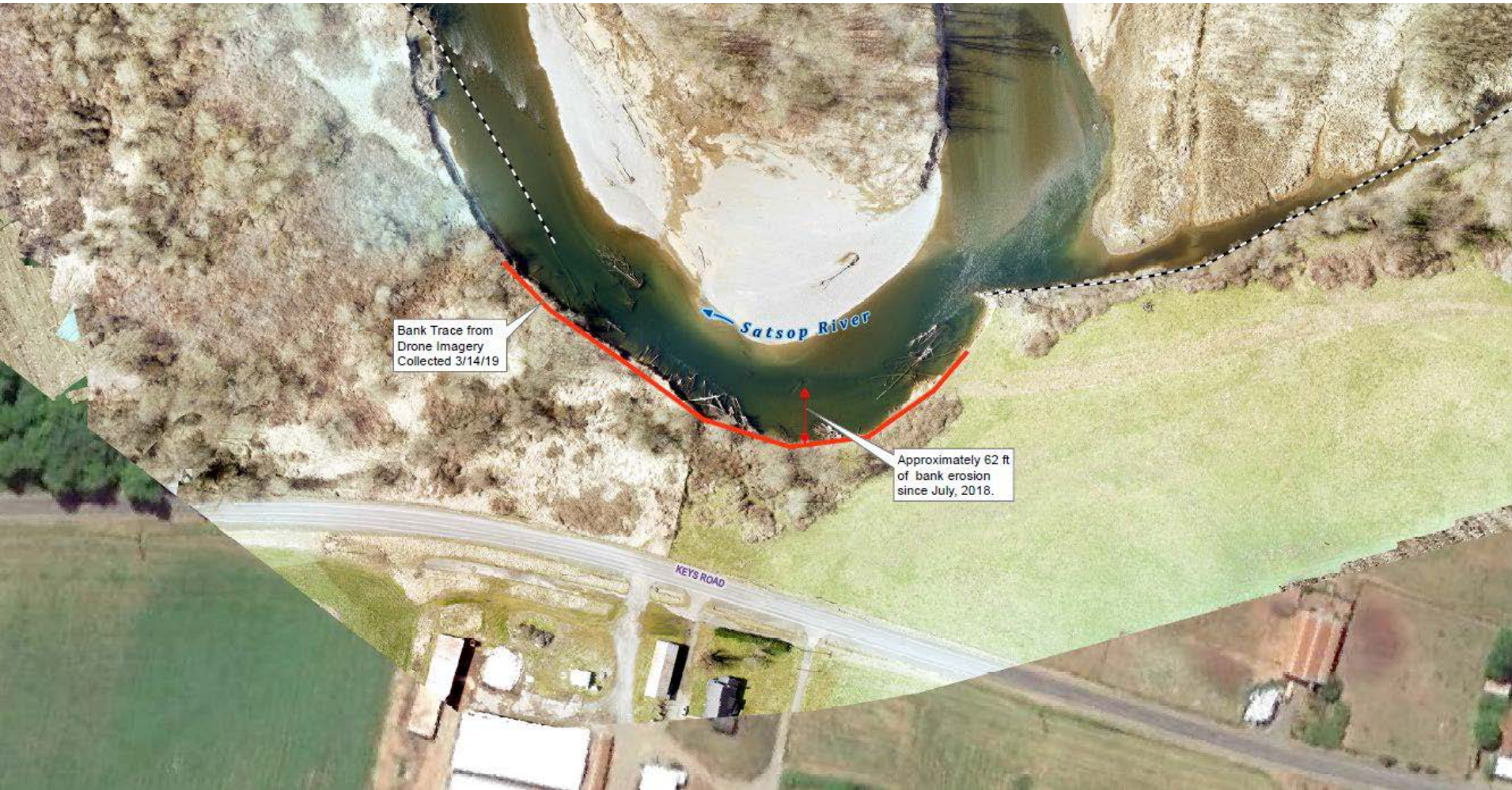
Projected Erosion Without Treatment



Highly Erodible Agricultural Soils



Essential Infrastructure Threatened (e.g., Keys Rd.)



Implementation Stage (Plan)



Lower Satsop Reach Scale Assessment and Design: Protecting Infrastructure, Restoring Floodplain Function, and Reducing Erosion and Sedimentation.

Preliminary Design Phased Construction Plan



0 250 500 1,000 Feet

Aerial Imagery 2017 NAIP with 2019 Drone Imagery

Lambert conformal conic projection, NAD 1983
State Plane Coordinate System (WA South Zone)

CONSTRUCTION [Funded, Not Funded.]	WDFW "Restoration"	GHC "Restoration and Protection"
2019 -->	Phase I - Ponds, Revetment	
2020 -->	Phase II - Ponds, Revetment	Phase I - Keys Road, Port Well, Floodplain Restoration (A)
2021-22 -->		Phase II - Floodplain Restoration (B), Erosion Reduction (A)
2022-23 -->		Phase III - Floodplain Restoration (C), Erosion Reduction (B)
Future -->		Phase IV - Relocate Keys Road Infrastructure (at end of useful life)



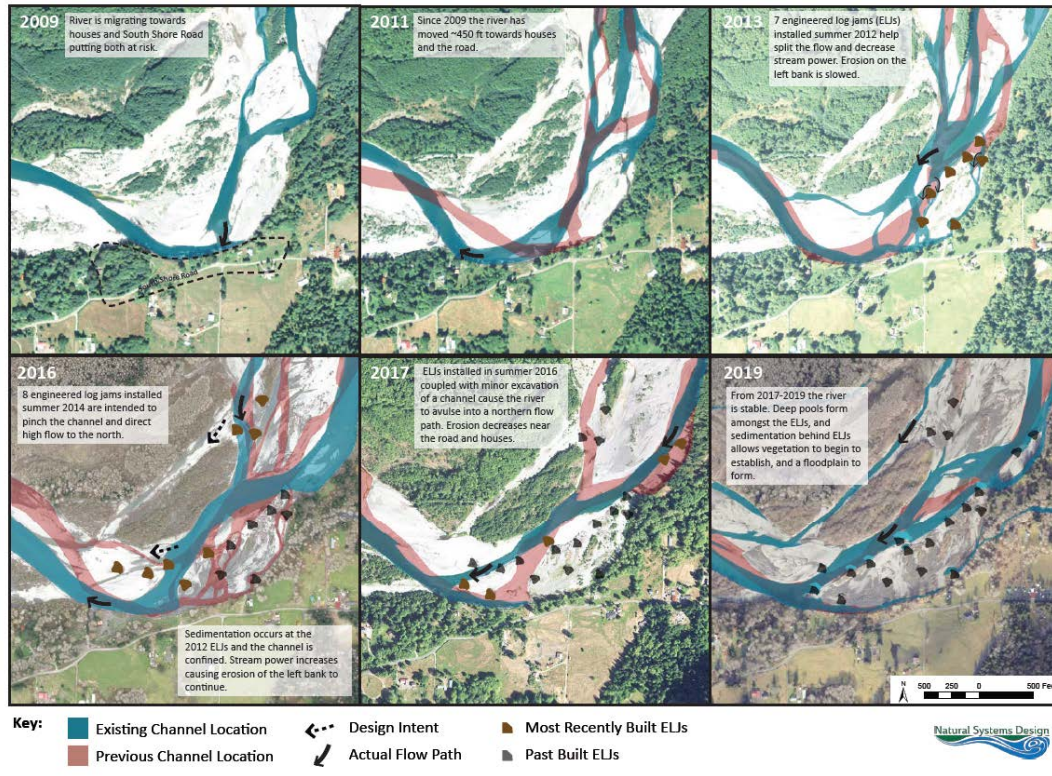
Implementation Stage (Advisory Group)



Implementation Stage (Examples)

Timber complex →

Upper Quinault Channel Migration Lower PAS



Apex Structure



Deflector Structure



Floodplain Roughness

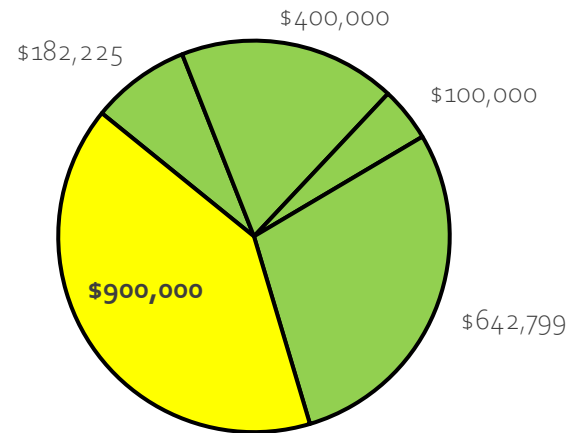


Implementation Stage

GHC Phase I (2020)

Phase I -- \$2,225,024

- Funds Secured -- 2019-21 State Capital Budget (\$182,225)
- Funds Secured -- GHC .09 Local Funds (\$400,000)
- Funds Secured -- GHC Road Fund (\$100,000)
- Funds Secured -- Flood Authority Local Projects Reobligation Funds (\$642,799)
- Member Request -- 2019-21 Supplemental State Capital Budget (\$900,000)



WDFW Phase II (2020)

Cost

Status

2020:

- | | | |
|--|--------------------|-------------------|
| • Phase II, (Construction) -- Ponds, Revetment | \$1,429,000 (WCRI) | Funded, Scheduled |
|--|--------------------|-------------------|

Implementation Stage (2019)



WDFW Ponds Restoration
(remove spoils piles, shallow out ponds)



Lower WDFW Revetment
(remove 200' rock toe, excavate 20' x 85' channel)

Contacts

Organization	
Grays Harbor County	Rob Wilson 360/249-4222 RWilson@co.grays-harbor.wa.us
Grays Harbor Conservation District	Anthony Waldrop 360/249-8532 ghcdwater@gmail.com
WA Department of Fish and Wildlife	Michelle Cramer 360/902-2610 Michelle.Cramer@dfw.wa.gov
Port of Grays Harbor	Alissa Shay 360/ ashay@portgrays.org
Natural Systems Design	Miranda Smith 206/480-1127 miranda@naturaldes.com
Chehalis River Basin Flood Authority	Scott Boettcher 360/480-6600 scottb@sbgh-partners.com

Resource

https://www.ezview.wa.gov/site/alias__1492/37609/lower_satsop_restoration_and_protection_program.aspx



What's Next?

1. Upcoming Meetings/Briefings:

Date	Time	Location	Audience
9/30/2019	1:00 p.m.	Montesano, WDFW Regional Office	Lower Satsop Advisory Group
10/01/2019	10:30 a.m.	Montesano, Grays Harbor County Administration Building	Grays Harbor County Commissioners
10/03/2019	1:15 p.m.	Centralia, Train Depot	Chehalis Basin Board
10/08/2019	9:00 a.m.	Aberdeen, Port of Grays Harbor	Port of Grays Harbor
10/09/2019	10:30 a.m.	Olympia, 120 Union Avenue	The Nature Conservancy
10/31/2019	10:00 a.m.	Montesano, Grays Harbor County Administration Building	Rep. Brian Blake (19 th Leg. District) Rep. Jim Walsh (19 th Leg. District) Chris Davis (Governor's Policy Office)
11/??/2019	6:30 p.m.	Brady Firehall	Lower Satsop Community Members

2. JARPA = Late-December 2019/early-January 2020.