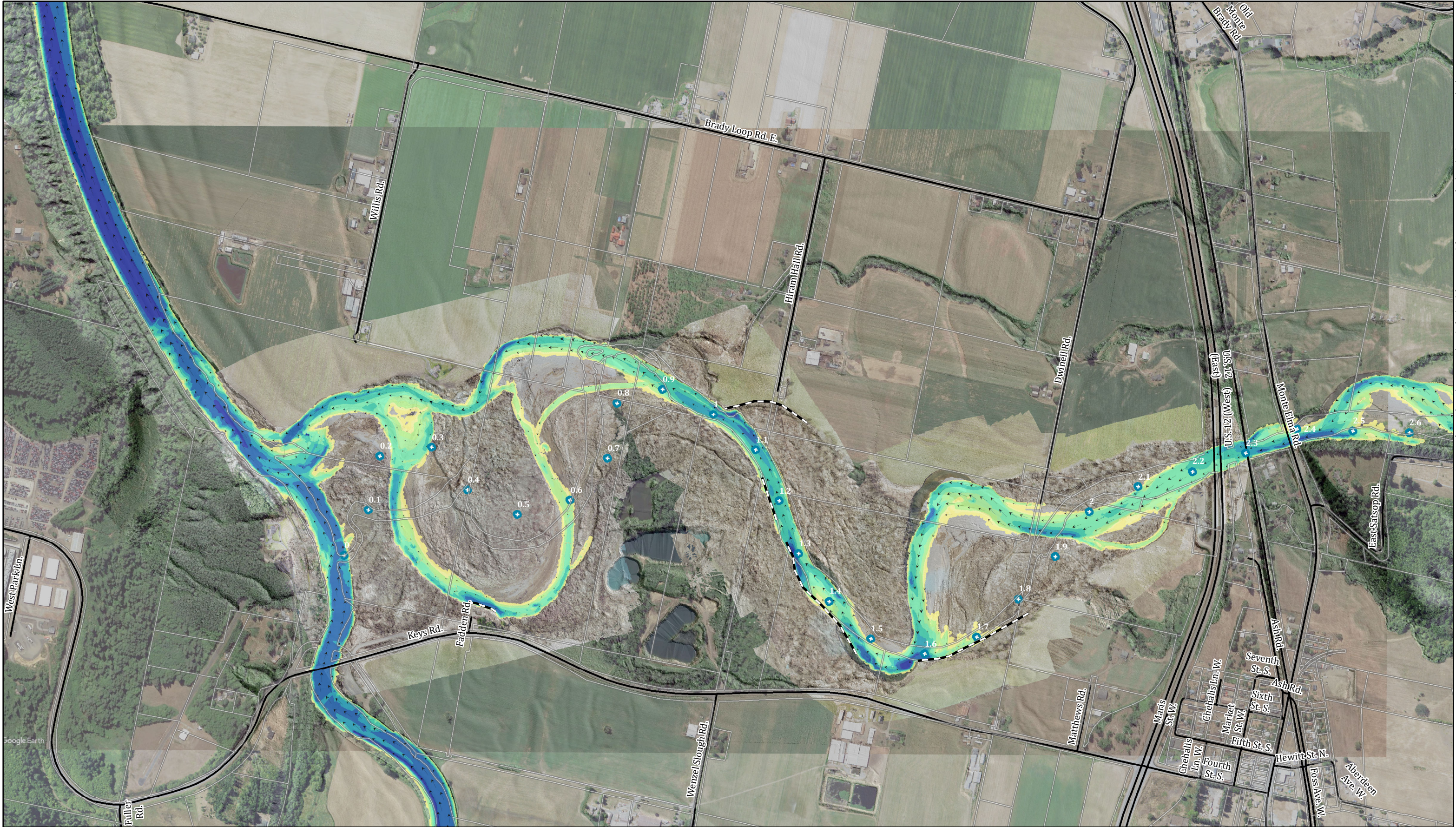


APPENDIX D

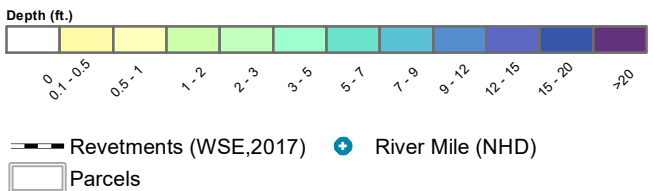
Hydraulic Model Results

THIS PAGE INTENTIONALLY LEFT BLANK

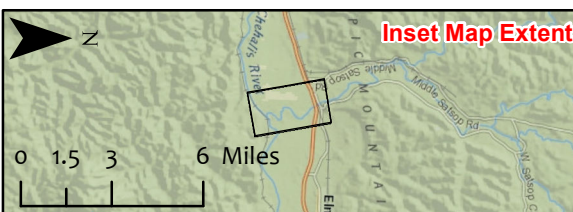


Lower Satsop River Reach Assessment and Design
Proposed Conditions - Hydraulic Model Results
February Mean Flow (3,660 cfs) Depth

0 250 500 1,000 Feet

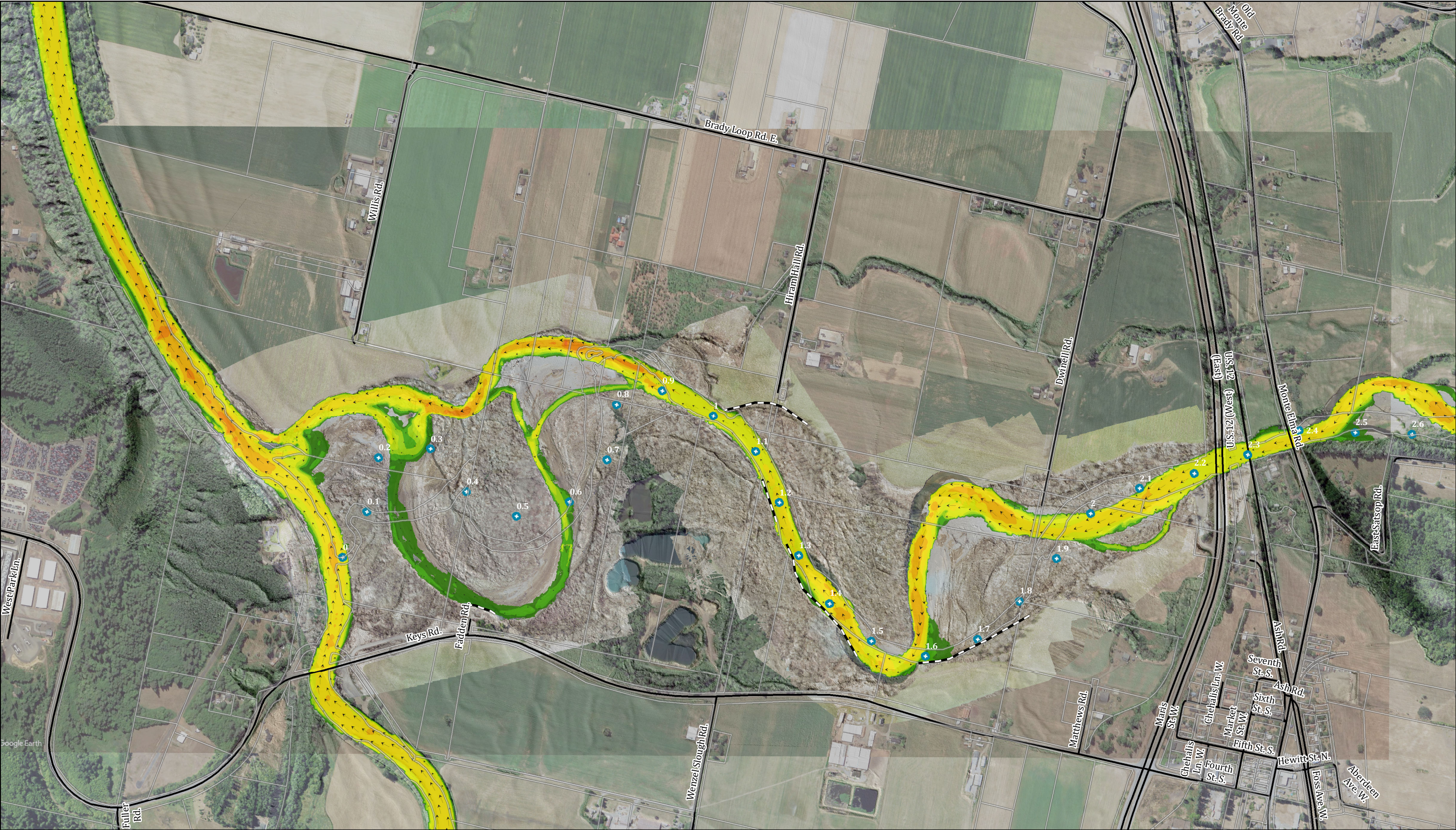


Channel and active floodplain imagery collected on 3/14/19-3/15/19 by NSD.
Remaining imagery collected on 7/21/18 by Google Earth and 2017 USDA NAIP

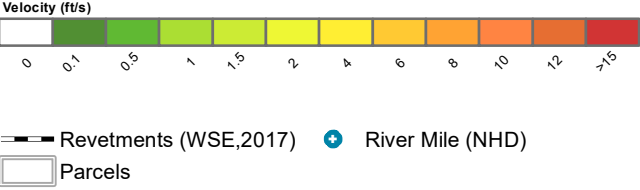
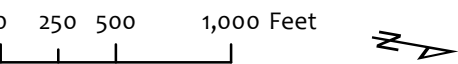


Lambert conformal conic projection, NAD 1983
State Plane Coordinate System (WA South Zone)





Lower Satsop River Reach Assessment and Design
Proposed Conditions - Hydraulic Model Results
February Mean Flow (3,660 cfs) Velocity

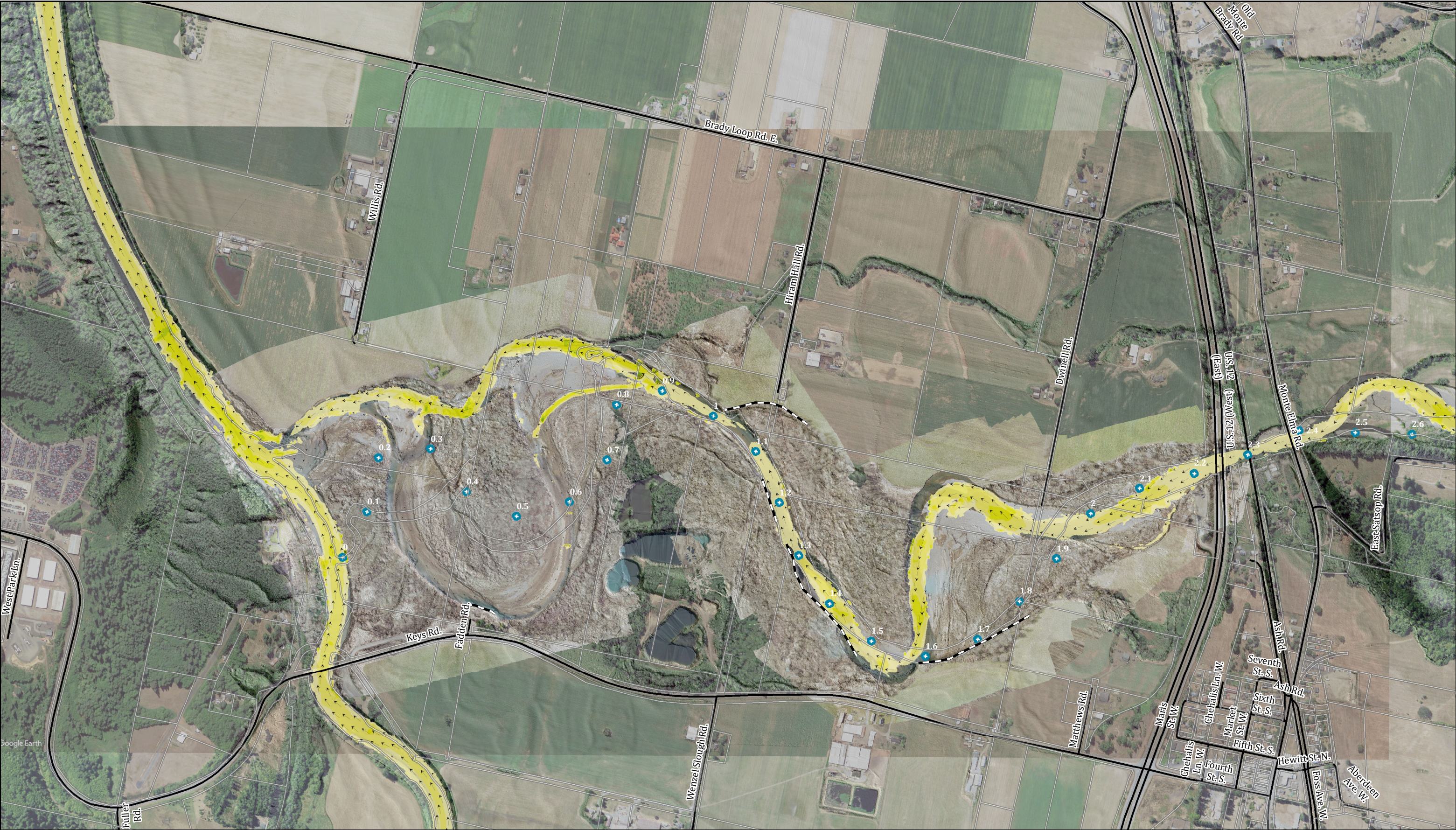


Channel and active floodplain imagery collected on 3/14/19-3/15/19 by NSD.
Remaining imagery collected on 7/21/18 by Google Earth and 2017 USDA NAIP



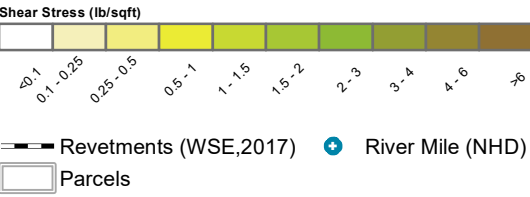
Lambert conformal conic projection, NAD 1983
State Plane Coordinate System (WA South Zone)



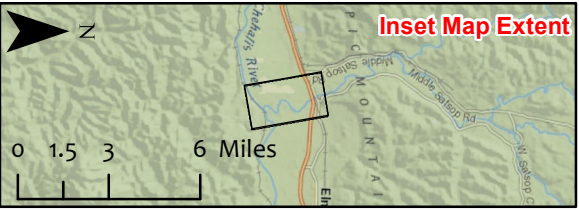


Lower Satsop River Reach Assessment and Design
Proposed Conditions - Hydraulic Model Results
February Mean Flow (3,660 cfs) Shear Stress

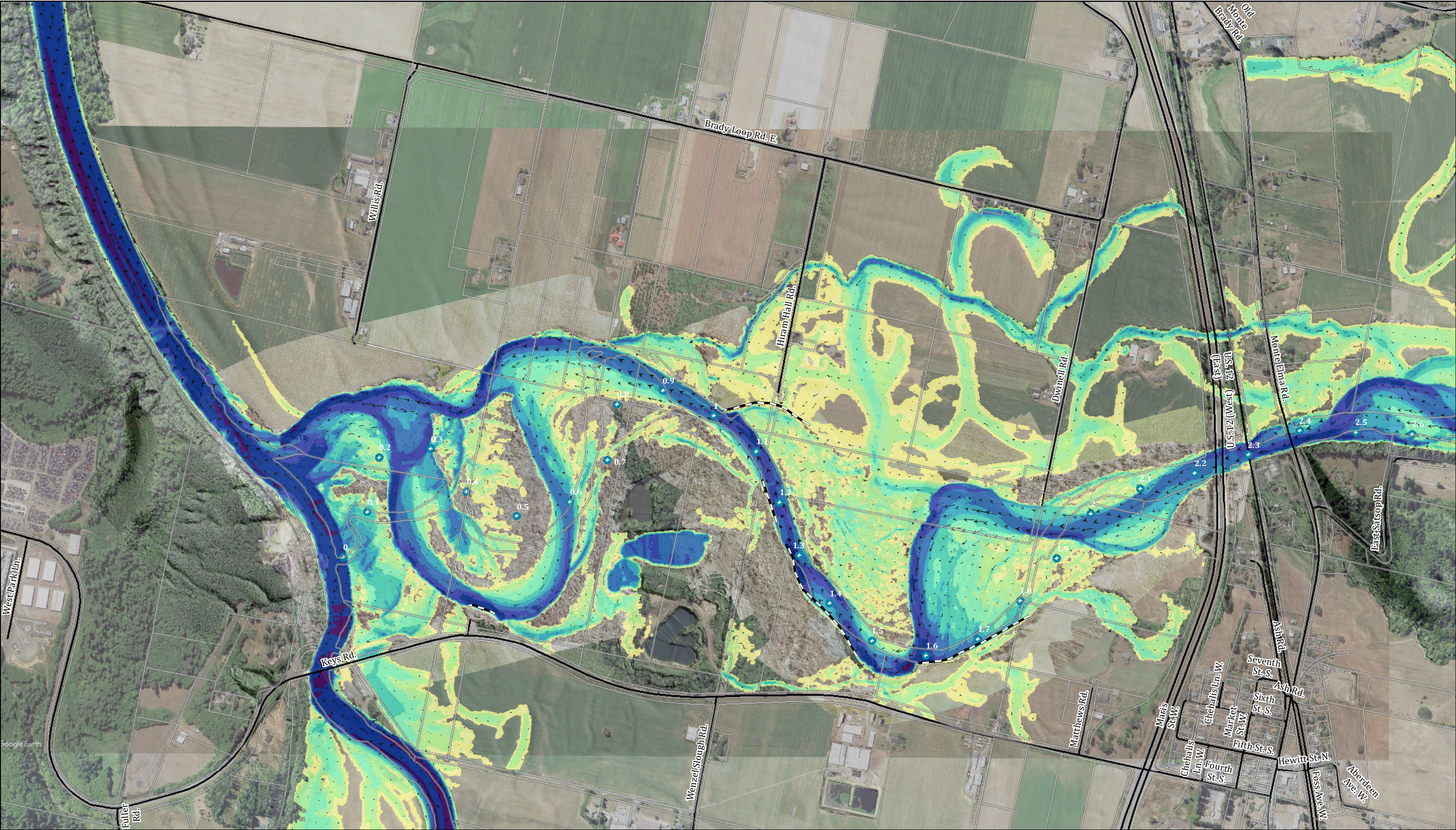
0 250 500 1,000 Feet



Channel and active floodplain imagery collected on 3/14/19-3/15/19 by NSD.
Remaining imagery collected on 7/21/18 by Google Earth and 2017 USDA NAIP



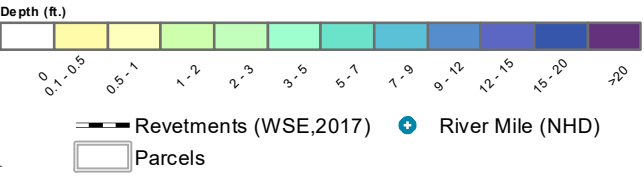
Lambert conformal conic projection, NAD 1983
State Plane Coordinate System (WA South Zone)



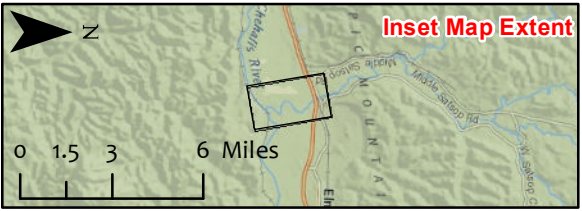
Lower Satsop River Reach Assessment and Design
Lower Satsop River Hydraulic Model Results

EC Q2 (26,260 cfs) Depth

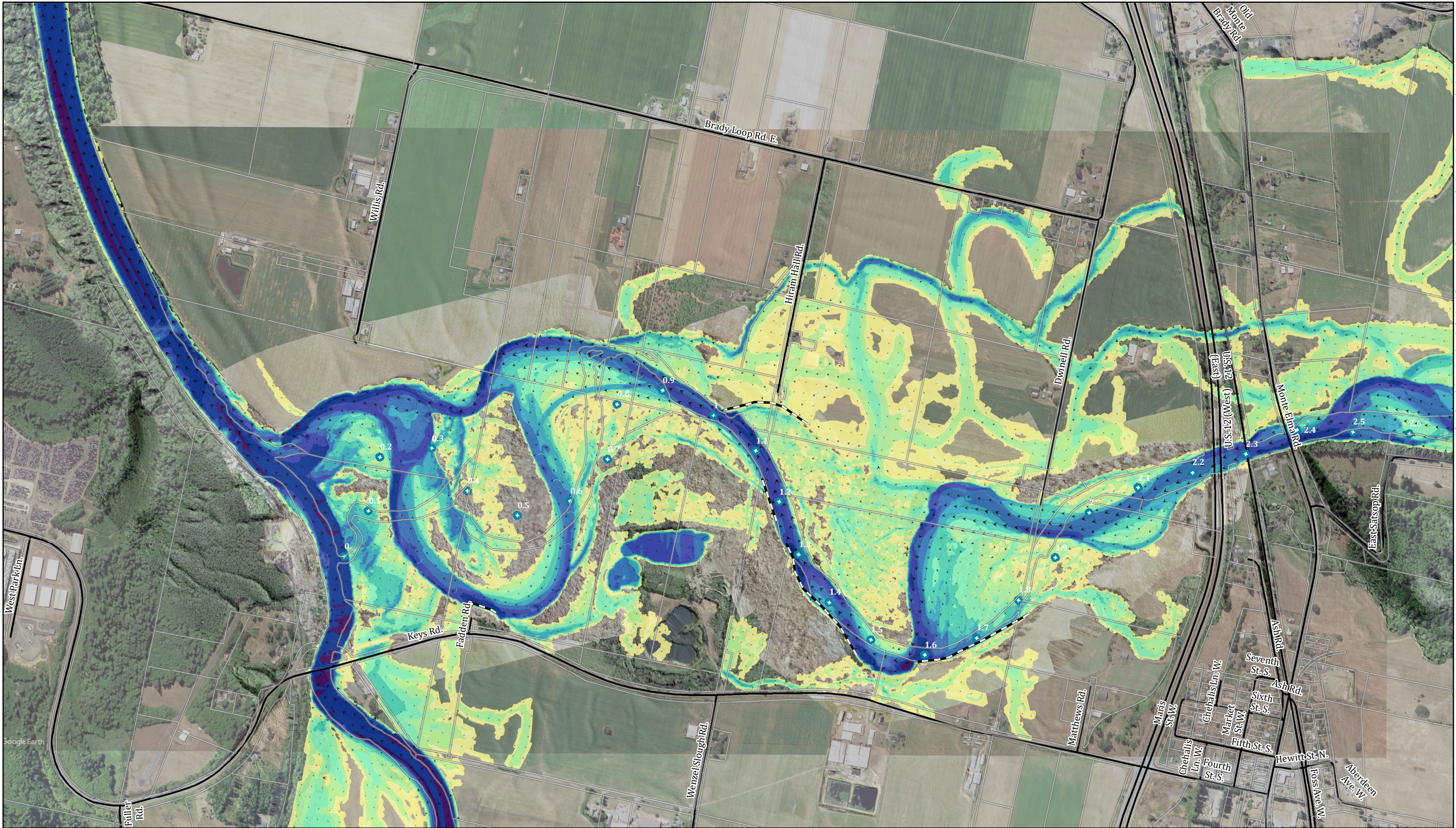
0 250 500 1,000 Feet



Channel and active floodplain imagery collected on 3/14/19-3/15/19 by NSD.
Remaining imagery collected on 7/21/18 by Google Earth and 2017 USDA NAIP

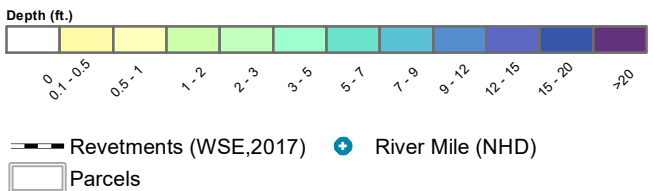


Lambert conformal conic projection, NAD 1983
State Plane Coordinate System (WA South Zone)

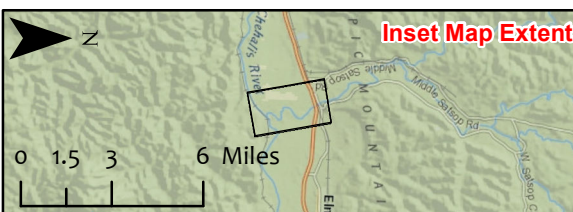


Lower Satsop River Reach Assessment and Design
Proposed Conditions - Hydraulic Model Results
2-yr Flow (26,260 cfs) Depth

0 250 500 1,000 Feet



Channel and active floodplain imagery collected on 3/14/19-3/15/19 by NSD.
Remaining imagery collected on 7/21/18 by Google Earth and 2017 USDA NAIP



Lambert conformal conic projection, NAD 1983
State Plane Coordinate System (WA South Zone)

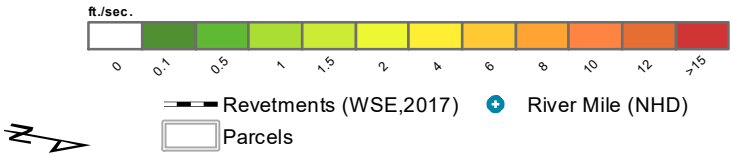




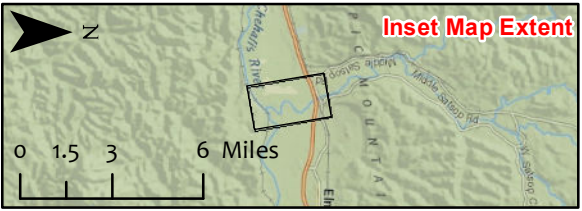
Lower Satsop River Reach Assessment and Design
Lower Satsop River Hydraulic Model Results

EC Q2 (26,260 cfs) Velocity

0 250 500 1,000 Feet



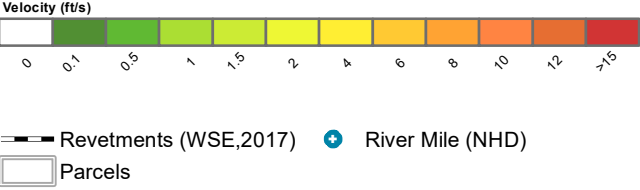
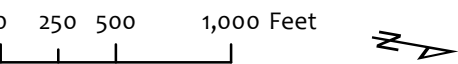
Channel and active floodplain imagery collected on 3/14/19-3/15/19 by NSD.
Remaining imagery collected on 7/21/18 by Google Earth and 2017 USDA NAIP



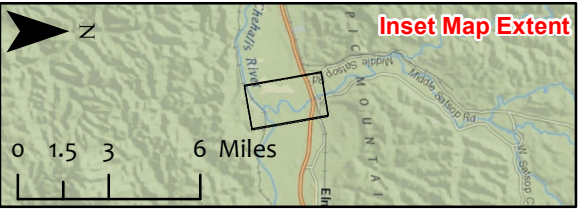
Lambert conformal conic projection, NAD 1983
State Plane Coordinate System (WA South Zone)



Lower Satsop River Reach Assessment and Design
Proposed Conditions - Hydraulic Model Results
2-yr Flow (26,260 cfs) Velocity

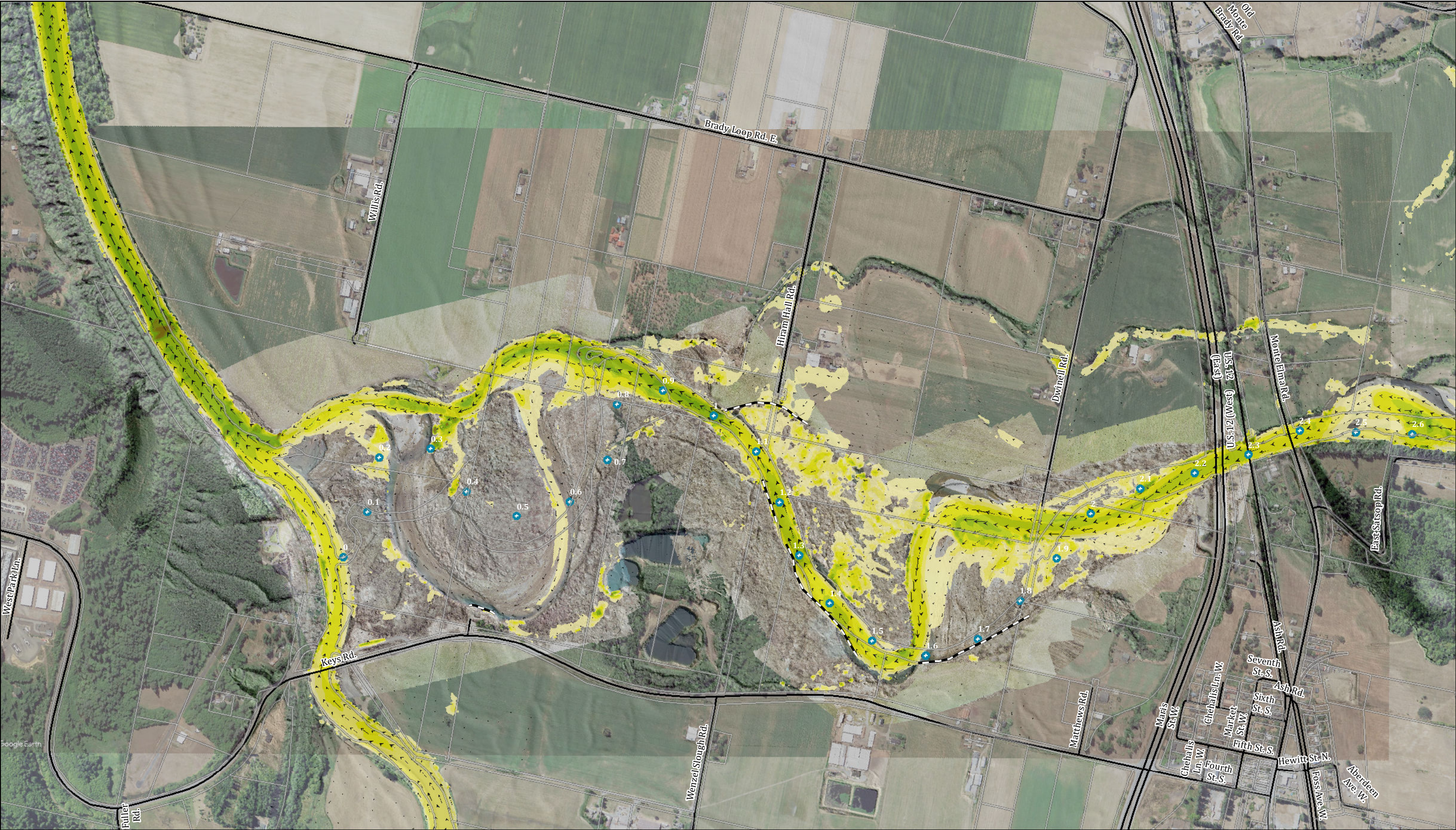


Channel and active floodplain imagery collected on 3/14/19-3/15/19 by NSD.
Remaining imagery collected on 7/21/18 by Google Earth and 2017 USDA NAIP



Lambert conformal conic projection, NAD 1983
State Plane Coordinate System (WA South Zone)





Lower Satsop River Reach Assessment and Design
Lower Satsop River Hydraulic Model Results

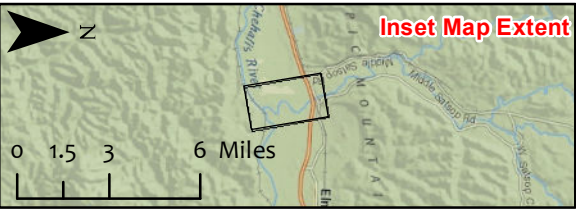
EC Q2 (26,260 cfs) Shear Stress

0 250 500 1,000 Feet

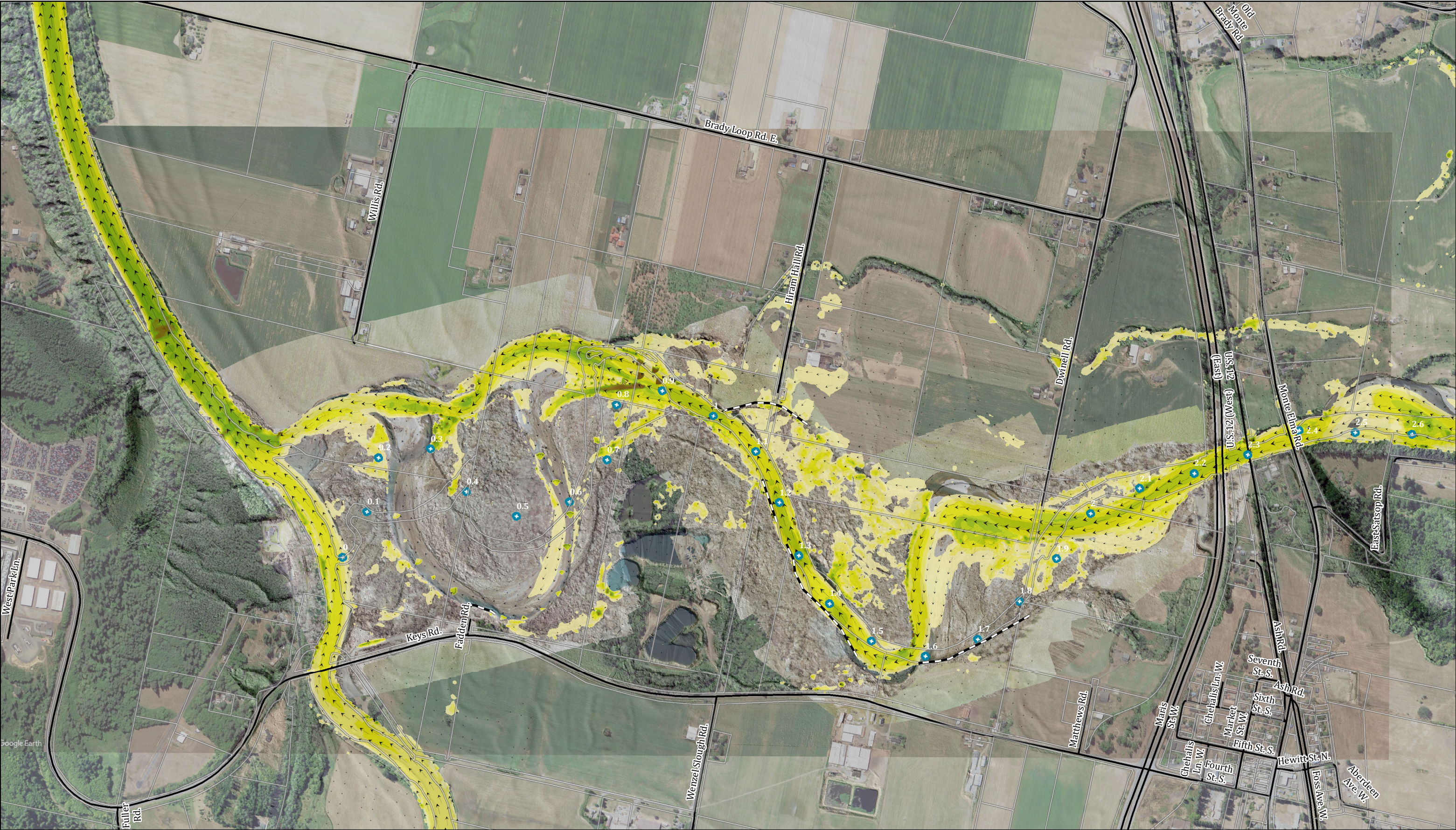


— Revetments (WSE,2017) ● River Mile (NHD)
□ Parcels

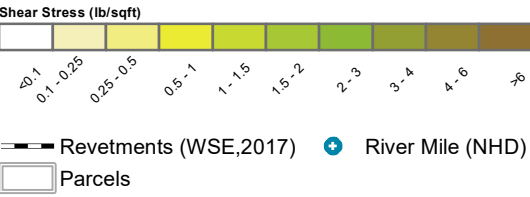
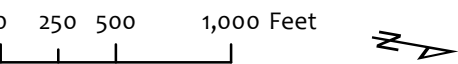
Channel and active floodplain imagery collected on 3/14/19-3/15/19 by NSD.
Remaining imagery collected on 7/21/18 by Google Earth and 2017 USDA NAIP



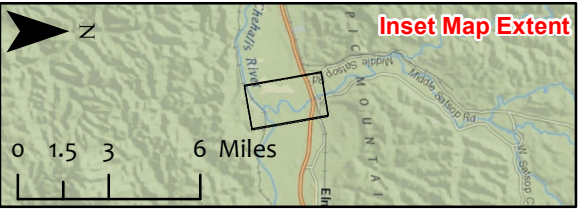
Lambert conformal conic projection, NAD 1983
State Plane Coordinate System (WA South Zone)



Lower Satsop River Reach Assessment and Design
Proposed Conditions - Hydraulic Model Results
2-yr Flow (26,260 cfs) Shear Stress

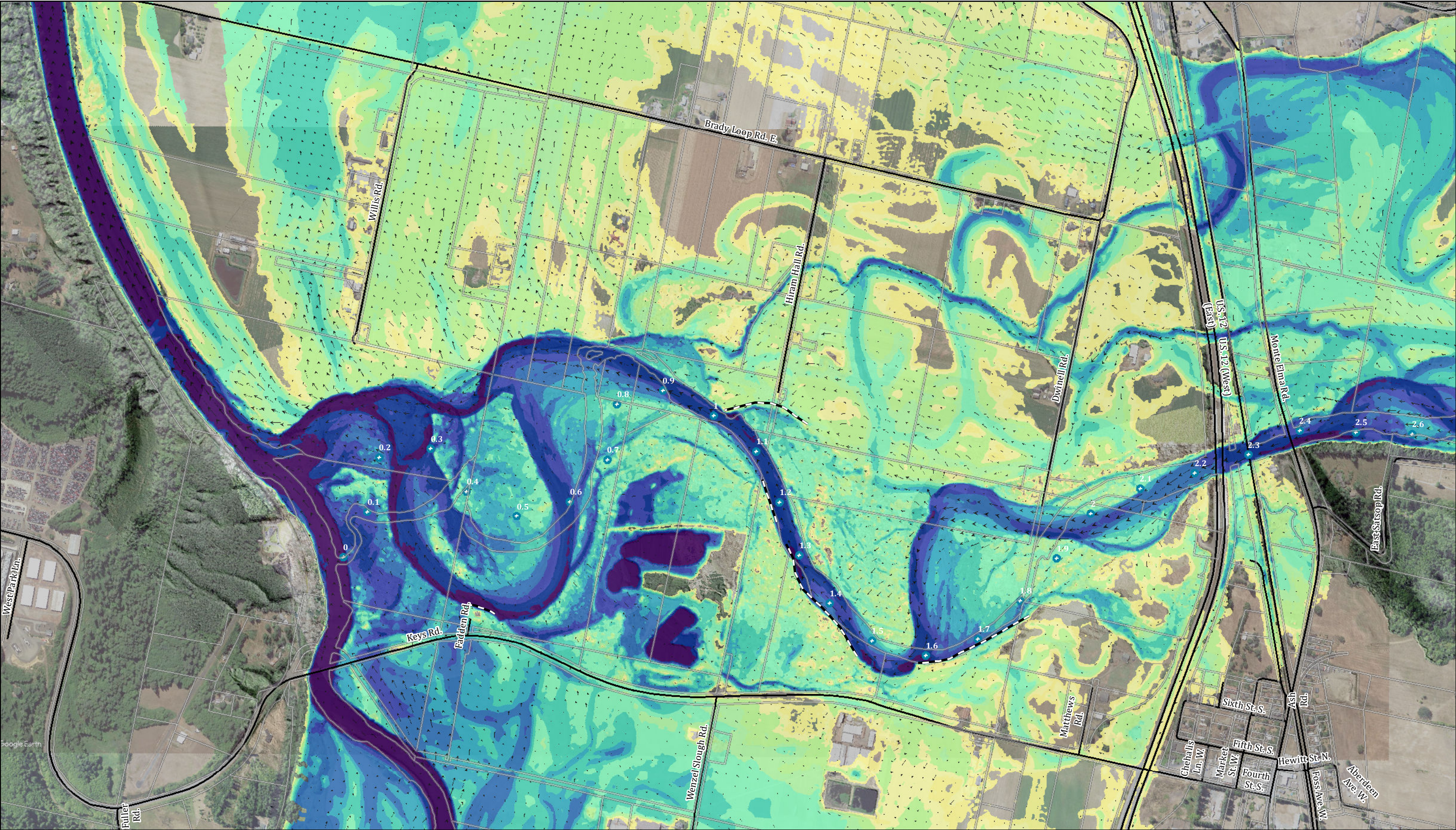


Channel and active floodplain imagery collected on 3/14/19-3/15/19 by NSD.
Remaining imagery collected on 7/21/18 by Google Earth and 2017 USDA NAIP



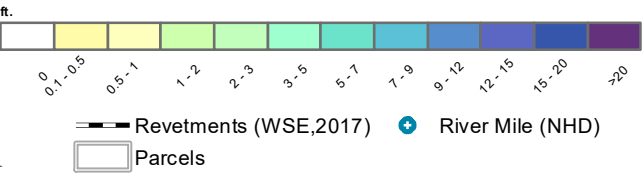
Lambert conformal conic projection, NAD 1983
State Plane Coordinate System (WA South Zone)



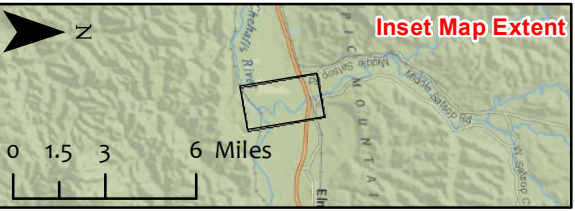


Lower Satsop River Reach Assessment and Design
Lower Satsop River Hydraulic Model Results
EC Q100 (52,610 cfs) Depth

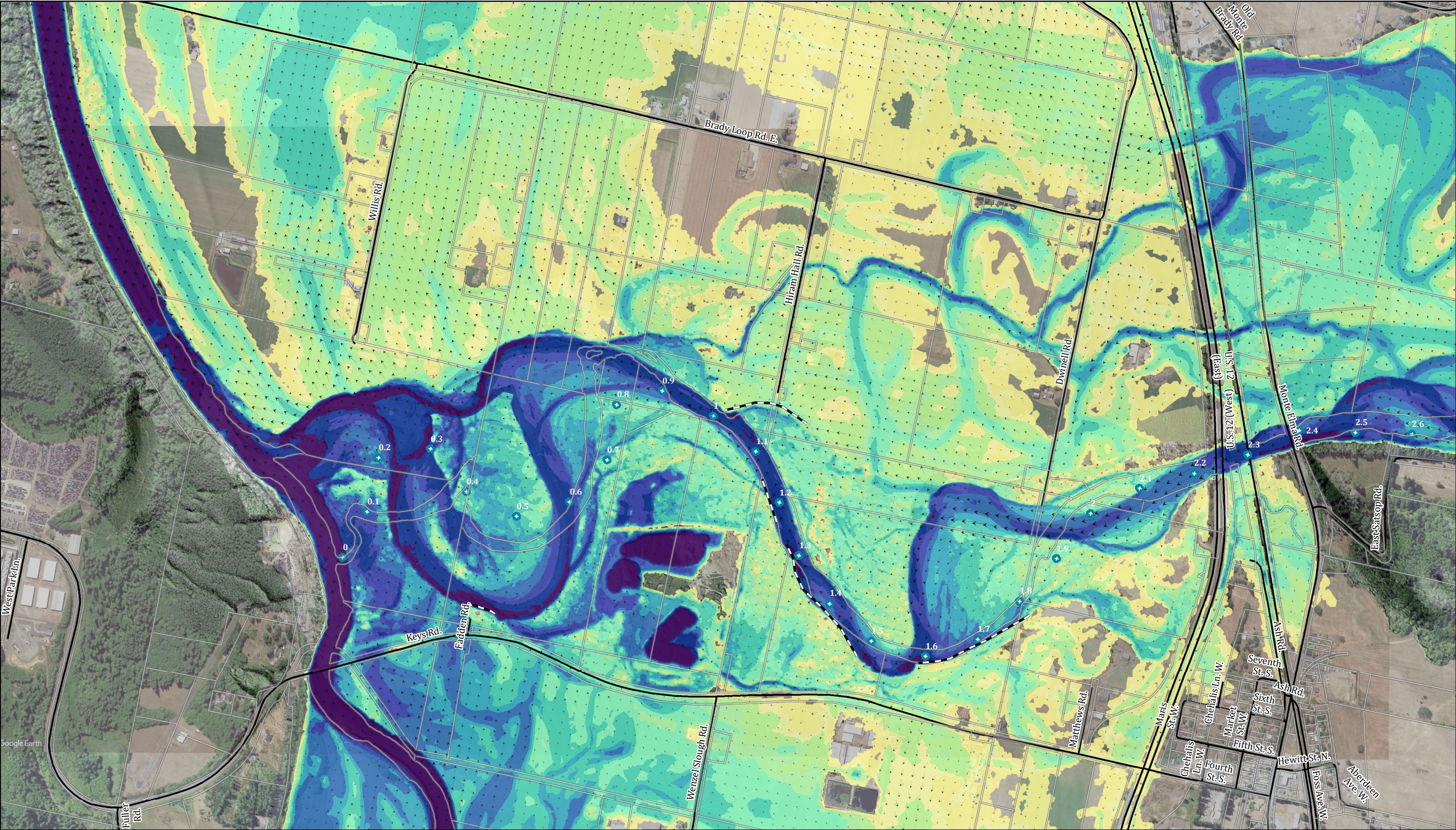
0 250 500 1,000 Feet



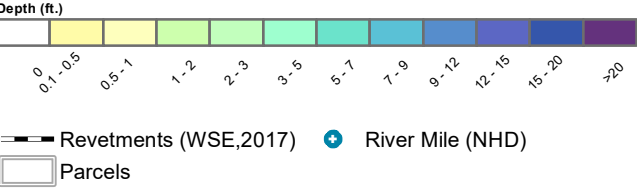
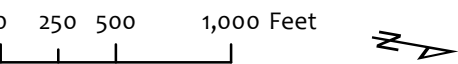
Channel and active floodplain imagery collected on 3/14/19-3/15/19 by NSD.
Remaining imagery collected on 7/21/18 by Google Earth and 2017 USDA NAIP



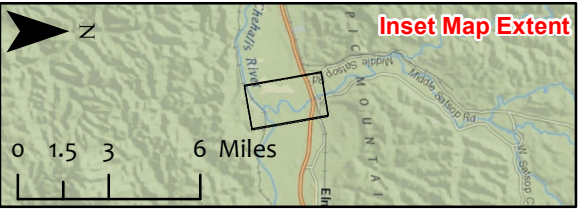
Lambert conformal conic projection, NAD 1983
State Plane Coordinate System (WA South Zone)



Lower Satsop River Reach Assessment and Design
Proposed Conditions - Hydraulic Model Results
100-yr Flow (52,610 cfs) Depth



Channel and active floodplain imagery collected on 3/14/19-3/15/19 by NSD.
Remaining imagery collected on 7/21/18 by Google Earth and 2017 USDA NAIP



Lambert conformal conic projection, NAD 1983
State Plane Coordinate System (WA South Zone)

