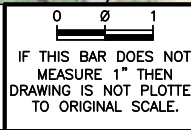
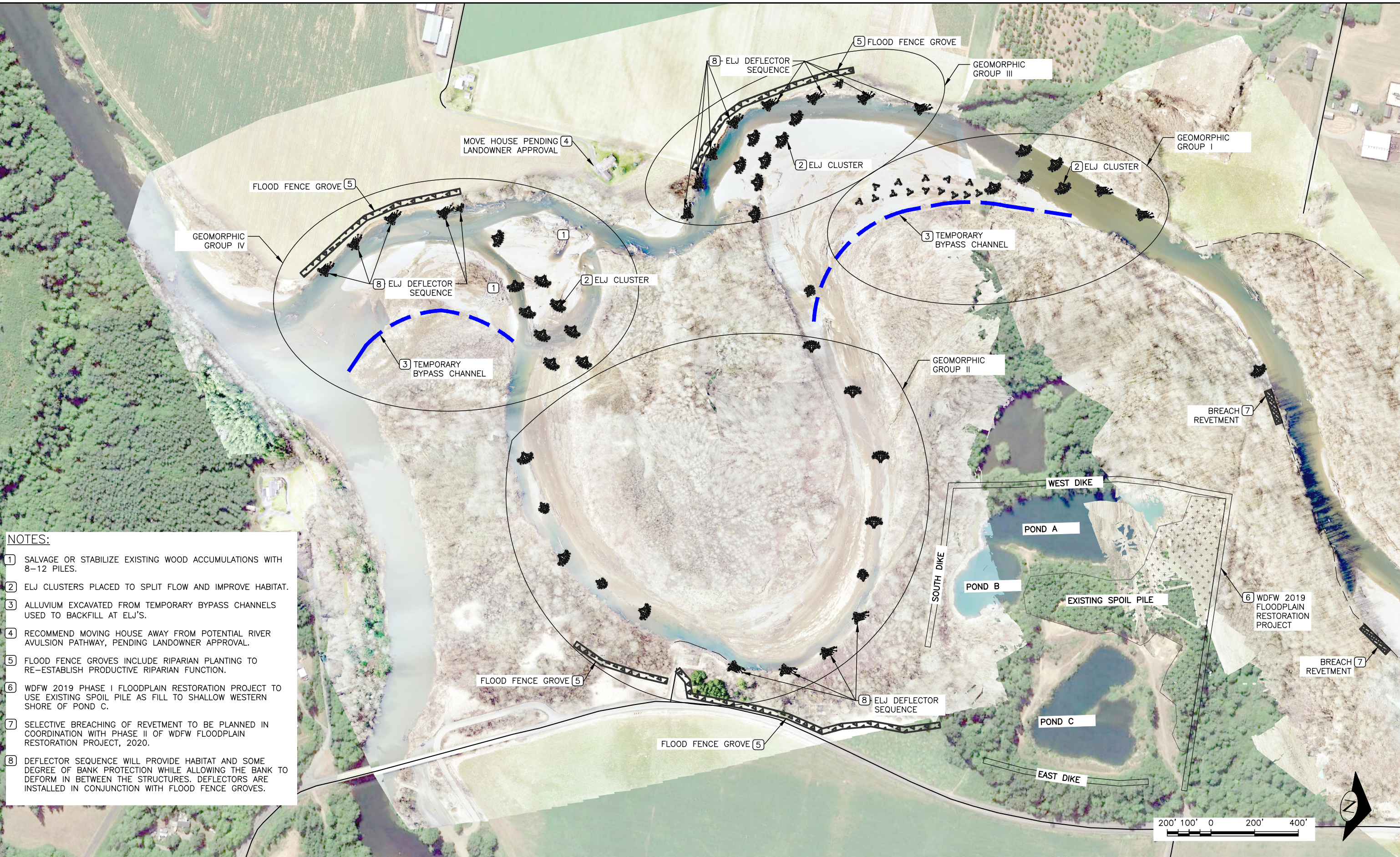


N:\PROJECTS\GRAYS HARBOR COUNTY\LOWER SATSOP\DESIGN\CAD DWGS - CURRENT\DC-GROUPINGS.DWG, Microsoft Word 5/17/2019 2:02:01 PM

NOTES:

- 1 SALVAGE OR STABILIZE EXISTING WOOD ACCUMULATIONS WITH 8-12 PILES.
- 2 ELJ CLUSTERS PLACED TO SPLIT FLOW AND IMPROVE HABITAT.
- 3 ALLUVIUM EXCAVATED FROM TEMPORARY BYPASS CHANNELS USED TO BACKFILL AT ELJ'S.
- 4 RECOMMEND MOVING HOUSE AWAY FROM POTENTIAL RIVER AVULSION PATHWAY, PENDING LANDOWNER APPROVAL.
- 5 FLOOD FENCE GROVES INCLUDE RIPARIAN PLANTING TO RE-ESTABLISH PRODUCTIVE RIPARIAN FUNCTION.
- 6 WDFW 2019 PHASE I FLOODPLAIN RESTORATION PROJECT TO USE EXISTING SPOIL PILE AS FILL TO SHALLOW WESTERN SHORE OF POND C.
- 7 SELECTIVE BREACHING OF REVETMENT TO BE PLANNED IN COORDINATION WITH PHASE II OF WDFW FLOODPLAIN RESTORATION PROJECT, 2020.
- 8 DEFLECTOR SEQUENCE WILL PROVIDE HABITAT AND SOME DEGREE OF BANK PROTECTION WHILE ALLOWING THE BANK TO DEFORM IN BETWEEN THE STRUCTURES. DEFLECTORS ARE INSTALLED IN CONJUNCTION WITH FLOOD FENCE GROVES.



NAME OR INITIALS AND DATE
DESIGNED RLE, MS
CHECKED RLE
DRAWN MS, GM
CHECKED RLE

GEOGRAPHIC INFORMATION
LATITUDE 47°03'49"N
LONGITUDE 123°29'29"W
TN/SC/RG T18W/S12/R7W
DATE 2/14/2019

LOWER SATSOP ASSESSMENT

PROPOSED CONDITIONS –
SITE 1

6
SHEET 6 OF 10

May 17, 2019 PRELIMINARY DESIGN NOT FOR CONSTRUCTION



- NOTES:
- 1 ELJ PLACED TO PROMOTE FLOW IN RELICT FLOODPLAIN CHANNEL.
 - 2 ALLUVIUM EXCAVATED FROM TEMPORARY BYPASS CHANNELS USED TO BACKFILL AT ELJ'S.
 - 3 FLOOD FENCE GROVES INCLUDE RIPARIAN PLANTING TO RE-ESTABLISH PRODUCTIVE RIPARIAN FUNCTION.
 - 4 WDFW 2019 PHASE I FLOODPLAIN RESTORATION PROJECT TO USE EXISTING SPOIL PILE AS FILL TO SHALLOW WESTERN SHORE OF POND C.
 - 5 SELECTIVE REVETMENT BREACHING TO BE PLANNED IN COORDINATION WITH PHASE II OF WDFW FLOODPLAIN RESTORATION PROJECT, 2020.
 - 6 DEFLECTOR SEQUENCE WILL PROVIDE HABITAT AND SOME DEGREE OF BANK PROTECTION WHILE ALLOWING THE BANK TO DEFORM IN BETWEEN THE STRUCTURES. DEFLECTORS ARE INSTALLED IN CONJUNCTION WITH FLOOD FENCE GROVES.

N:\PROJECTS\GRAYS HARBOR COUNTY\LOWER SATSOP\DESIGN\CAD DWGS - CURRENT\PROPOSED-CONDITIONS.DWG Mirrored 5/17/2019 1:55:28 PM

0 1
IF THIS BAR DOES NOT
MEASURE 1" THEN
DRAWING IS NOT PLOTTED
TO ORIGINAL SCALE.



NAME OR INITIALS AND DATE	GEOGRAPHIC INFORMATION
DESIGNED RLE, MS	LATITUDE 47°03'49"N
CHECKED RLE	LONGITUDE 123°29'29"W
DRAWN MS, GM	TN/SC/RG T18W/S12/R7W
CHECKED RLE	DATE 2/14/2019

LOWER SATSOP ASSESSMENT

PROPOSED CONDITIONS -
SITE 2

May 17, 2019 PRELIMINARY DESIGN NOT FOR CONSTRUCTION