



# Lower Satsop Restoration & Protection Program

## Phase I – Keys Road Corridor Flood Protection

May 26, 2020



Grays Harbor  
Conservation  
District

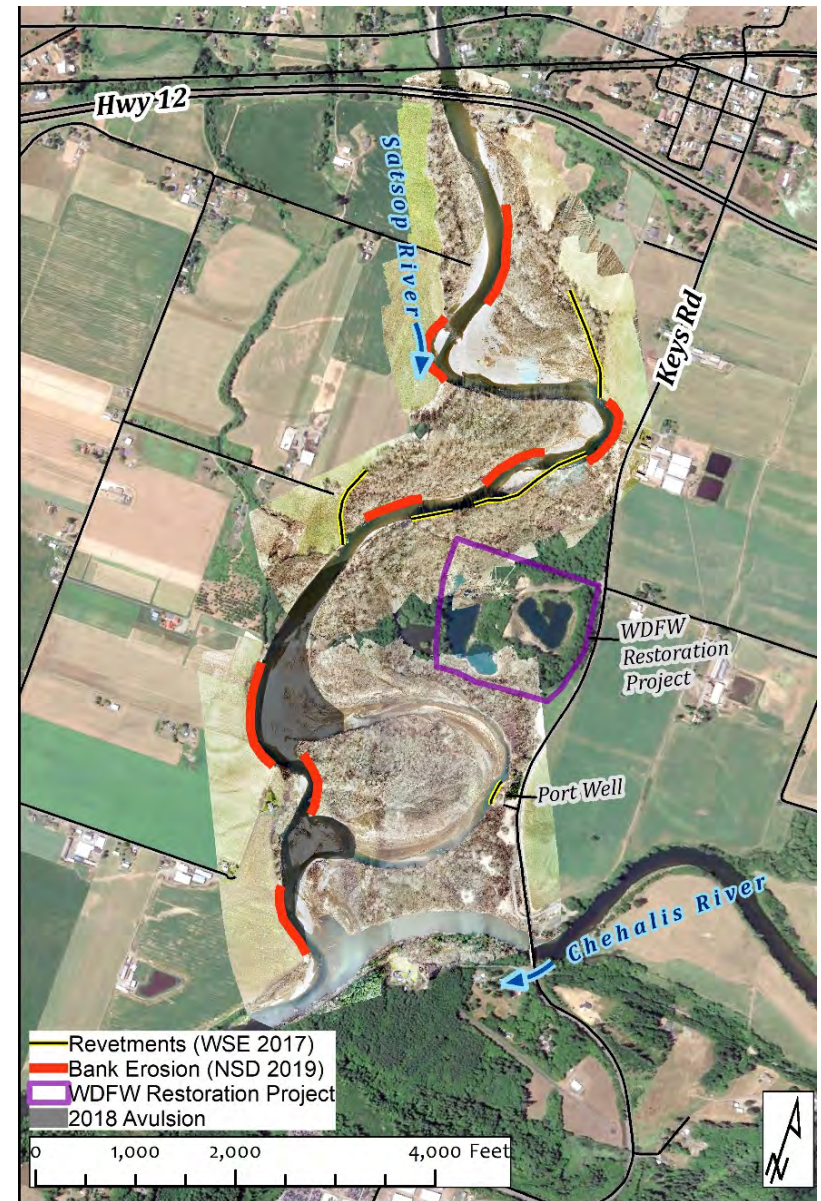
*your window to healthy lands*





# Background

- Bank Erosion
- Revetments
- Keys Road
- Port Well
- WDFW Restoration Project
- 2018 Avulsion
- Habitat Loss
- Loss of Floodplain Access
- Community Frustration
- Lack of Momentum





# Background



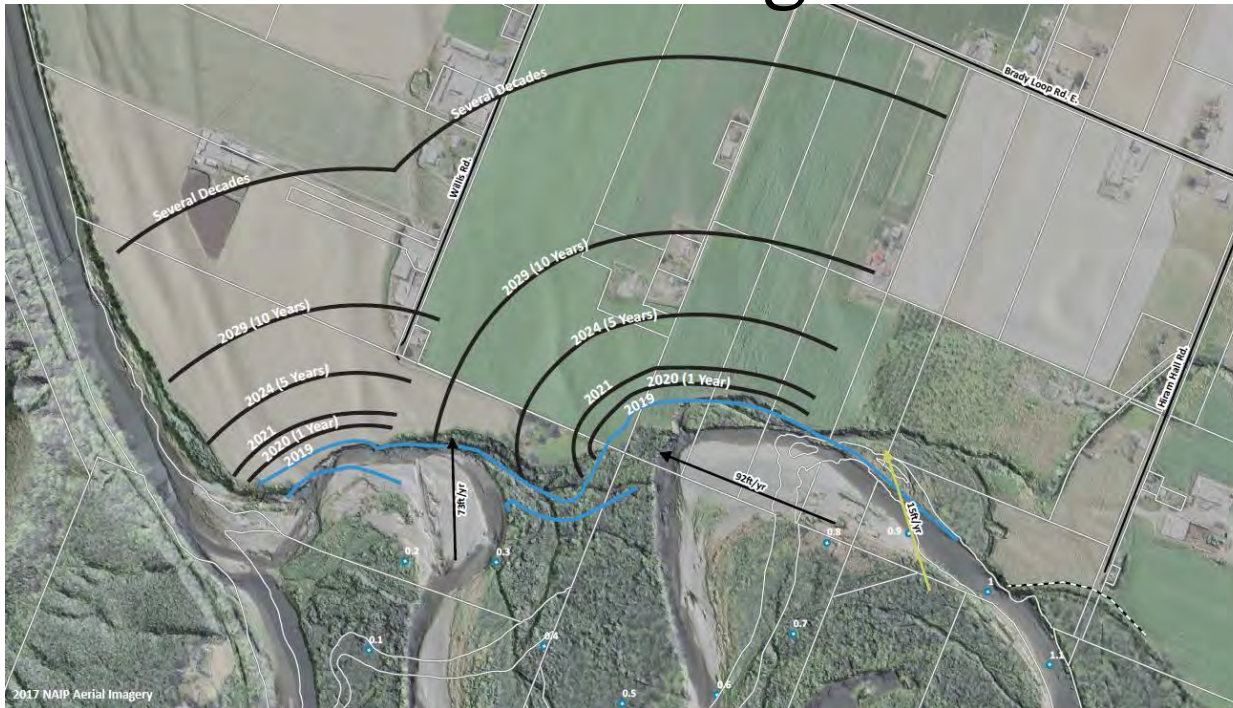
1953



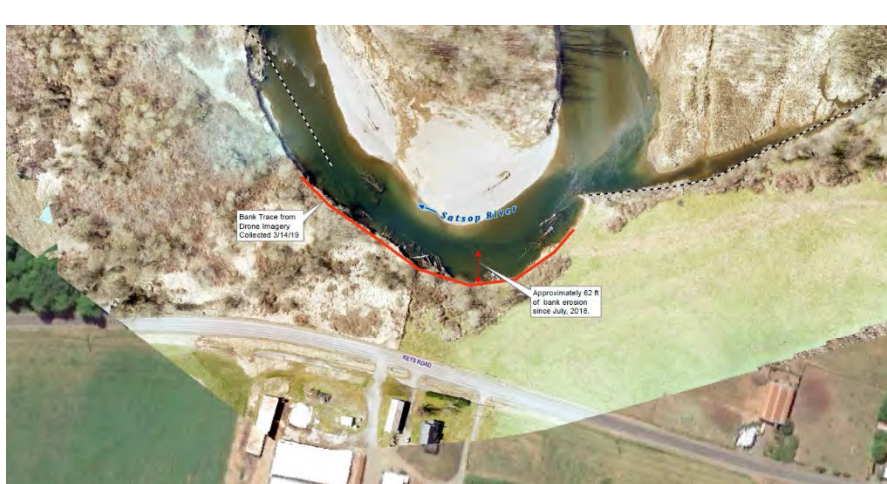
2019



# Background



Click below (and scroll to bottom of page)



12/04/2018 Drone Footage → Click [here](#).

01/06-09/2020 Flood (Webcam Video) → Click [here](#).

2/27/2020 WDFW Drone Footage:

→ Pictures -- Click [here](#).

→ Video1 -- Click [here](#).

→ Video2 -- Click [here](#).

→ Video3 -- Click [here](#).

→ Video4 -- Click [here](#).

→ Video5 -- Click [here](#).

# Background (Advisory Group)

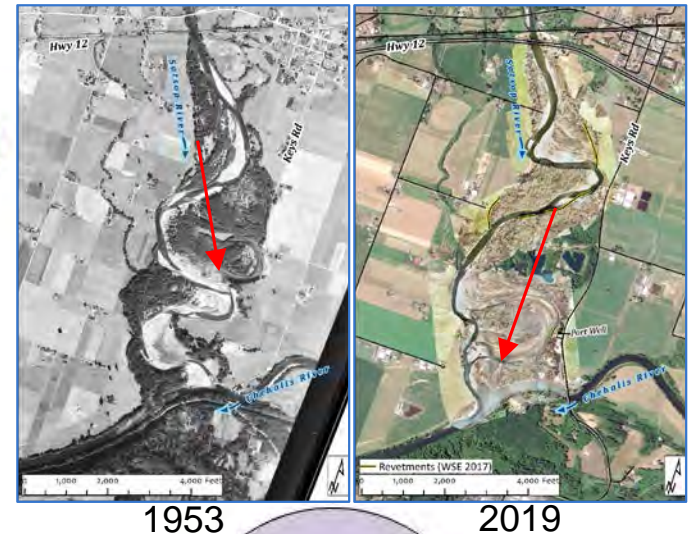






# Background

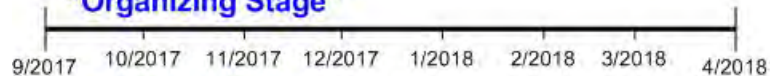
## Lower Satsop Restoration & Protection Program



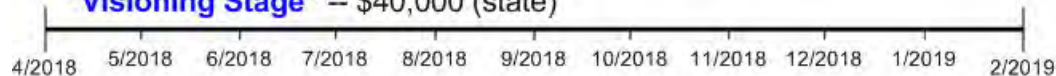
1953

2019

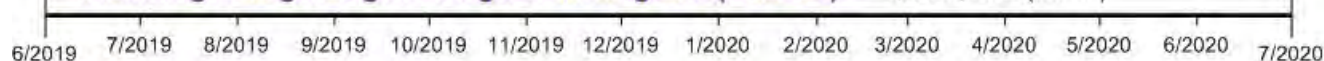
**"Organizing Stage"**



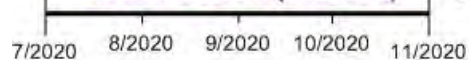
**"Visioning Stage"** -- \$40,000 (state)



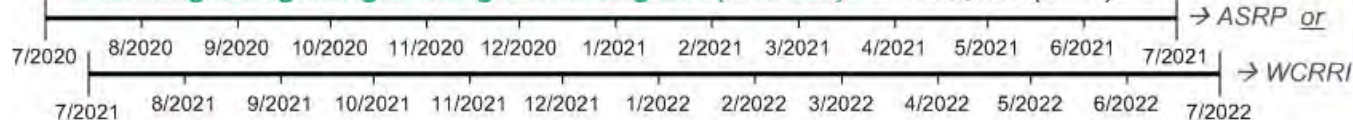
**"Planning/Design/Engineering/Permitting/Bid (Phase I)"** -- \$175,000 (state)



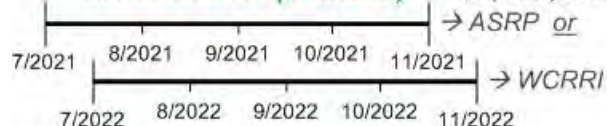
**"Construction (Phase I)"** -- \$1,725,024 (state), \$500K (local)



**"Planning/Design/Engineering/Permitting/Bid (Phase II)"** -- \$372,553 (state)



**"Construction (Phase II)"** -- \$1,416,829 (state)



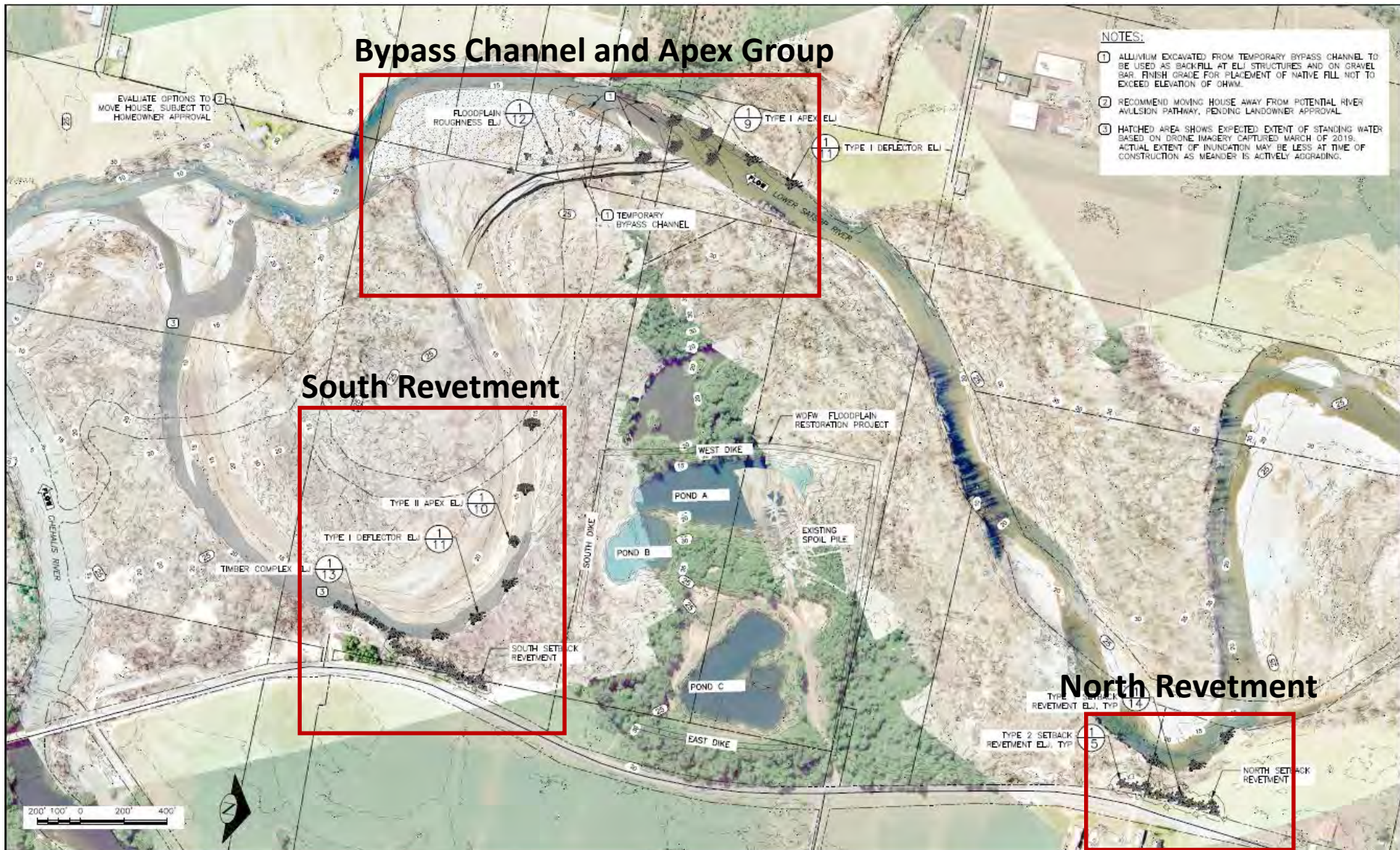
(Phase I)  
Keys Road Corridor  
Flood Protection  
Project

(Phase II)  
Habitat Connectivity  
& Reach-Scale Aquatic,  
Riparian and  
Floodplain Restoration  
Project

- ✓ Many Community Meetings.
- ✓ Many Individual Meetings/Presentations/Tours.
- ✓ Many Multi-Agency Advisory Group Meetings.

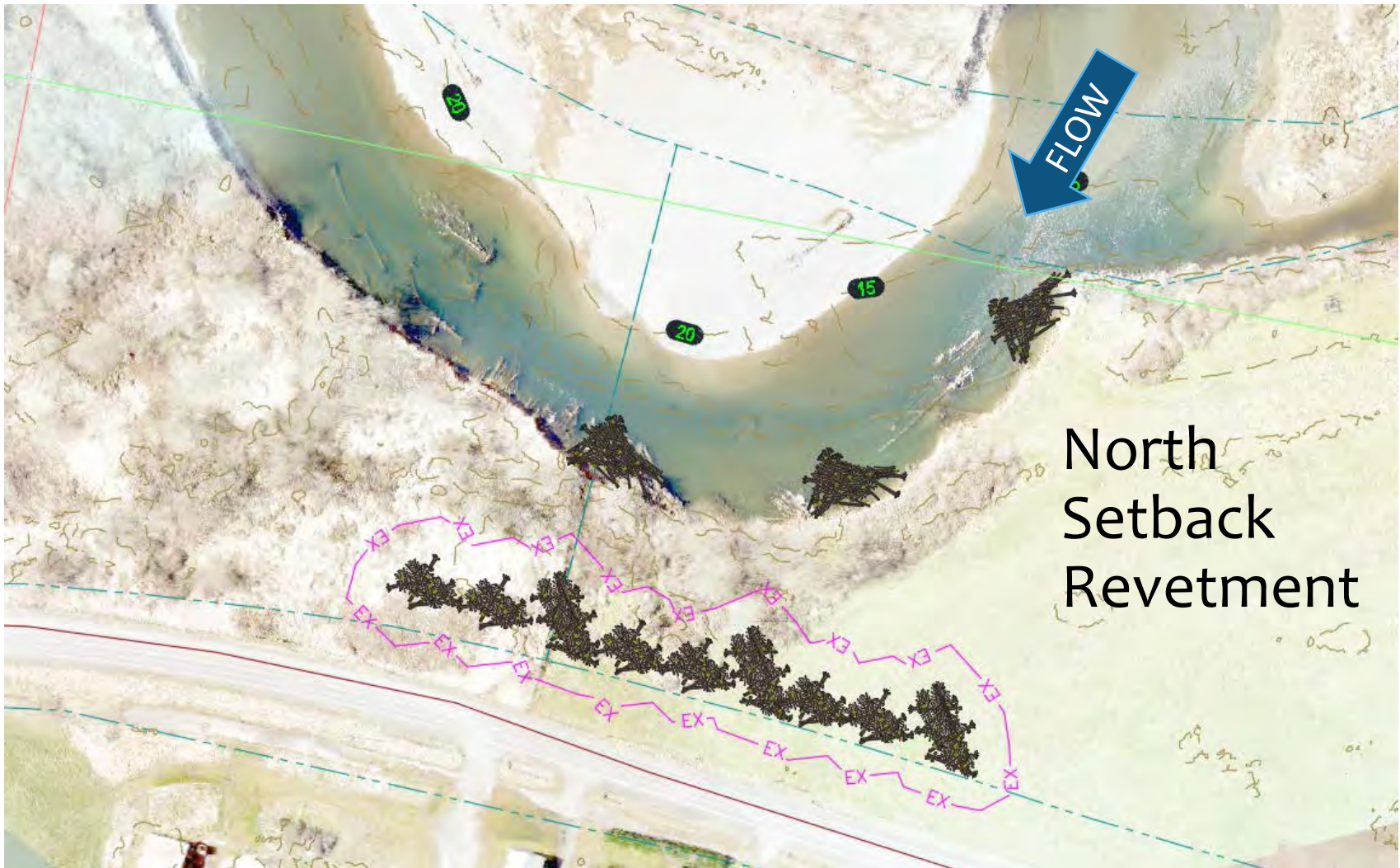


# Phase I (2020), Keys Road Corridor Flood Protection



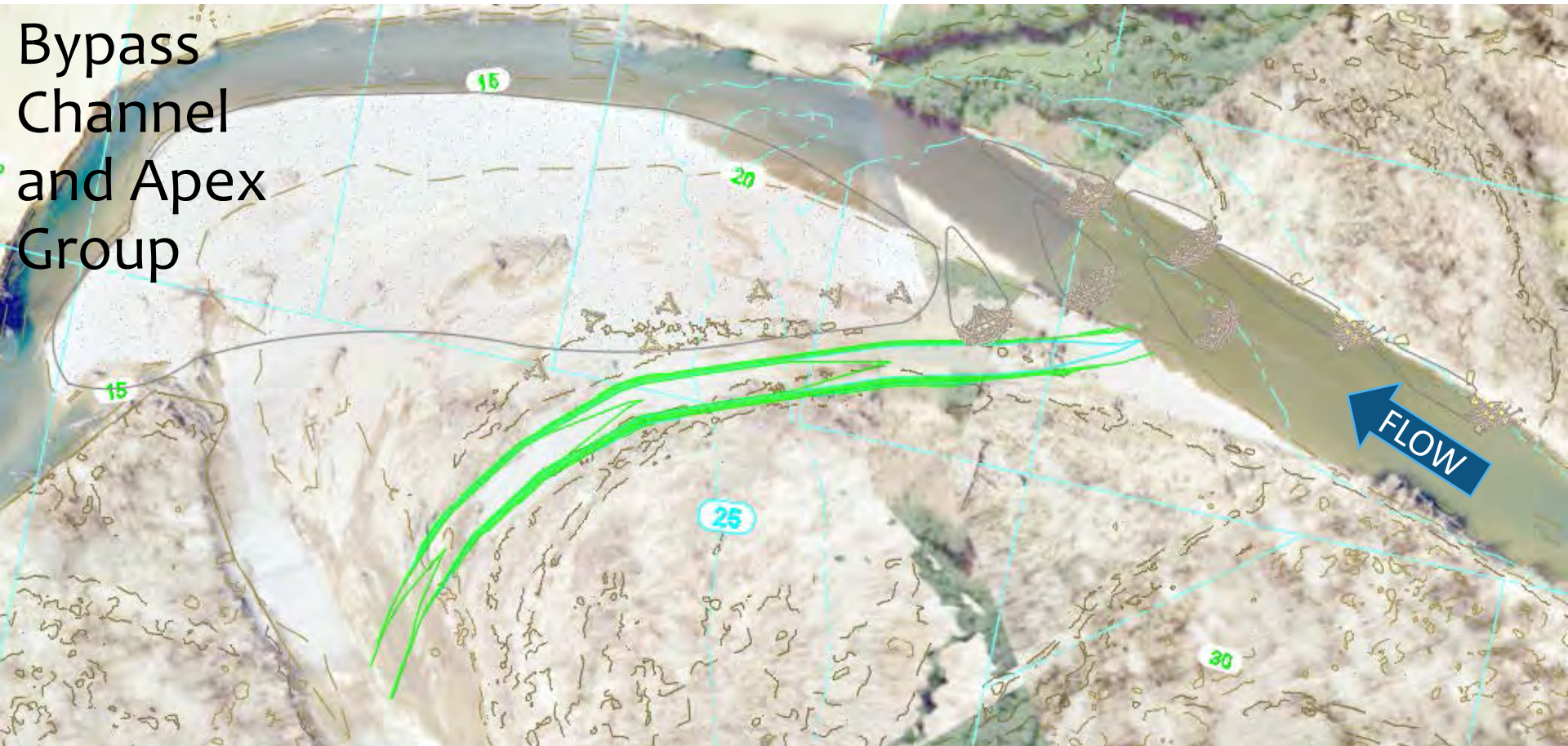


# Phase I (2020), Keys Road Corridor Flood Protection



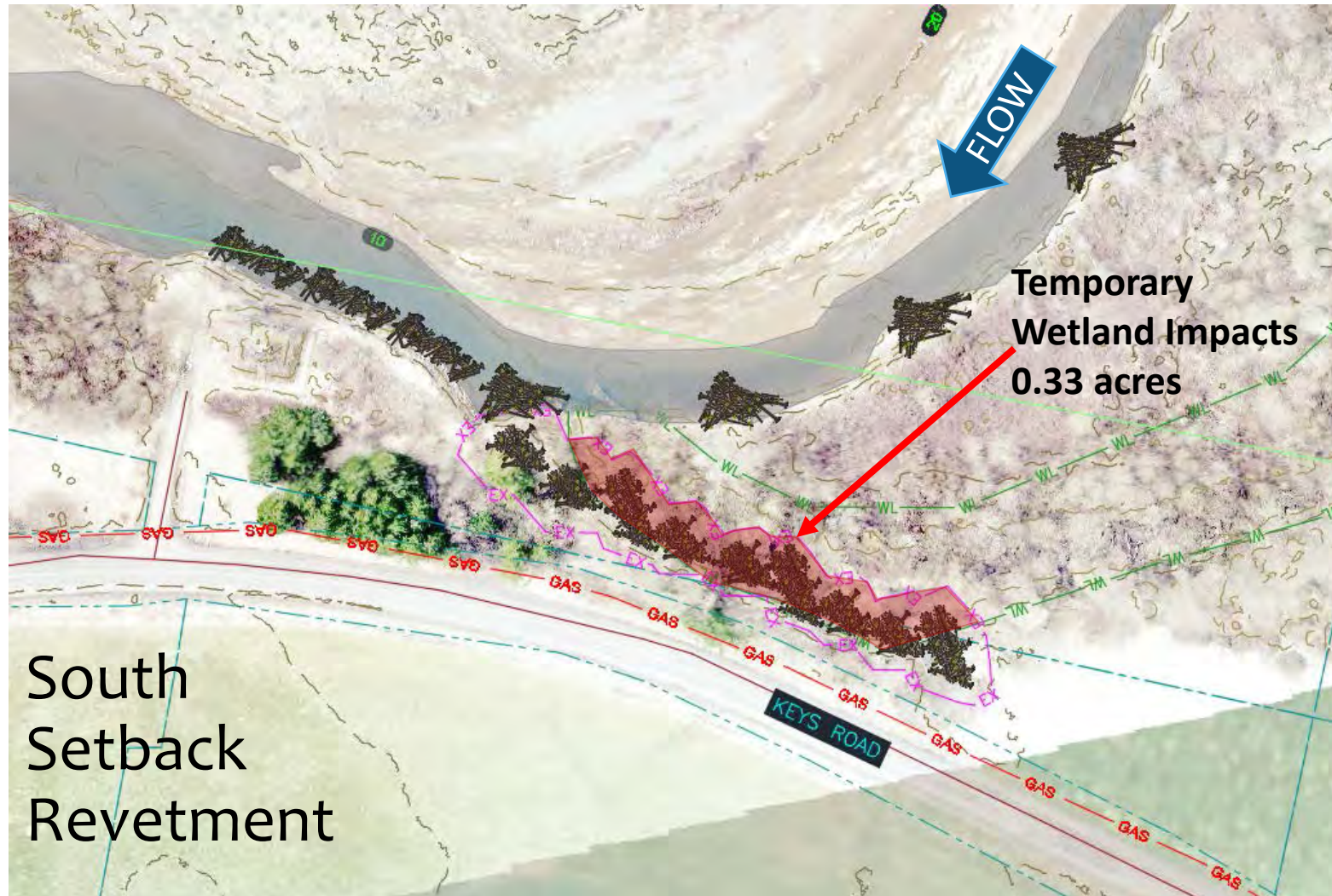


# Phase I (2020), Keys Road Corridor Flood Protection





# Phase I (2020), Keys Road Corridor Flood Protection





# Phase I (2020), Keys Road Corridor Flood Protection

## Construction Timeline

- Permitting may affect timeline
- Put out to bid late-May, early-June
- Construction to begin mid-July, late-July
- In-water work window August 1 -31
- Setback Revetment could be constructed outside of fish window
- Will require close coordination with WDFW as they finish Phase II of their Lower Satsop Floodplain Restoration Project.



## *Phase II (2021), Habitat Connectivity & Reach-Scale Aquatic, Riparian, and Floodplain Restoration*

- Build on investment in East Fork Satsop (Early-Action ASRP) by improving connectivity between critical habitats.
- Achieve reach-scale effect on sediment and flow dynamics.
  - ▶ 35 in-channel structures
  - ▶ 130 acres of riparian planting
- Reduce invasive species (~10 acres invasive plant control).

# Phase II (2021), Habitat Connectivity & Reach-Scale Aquatic, Riparian, and Floodplain Restoration



Red Outline = Phase I (2020)



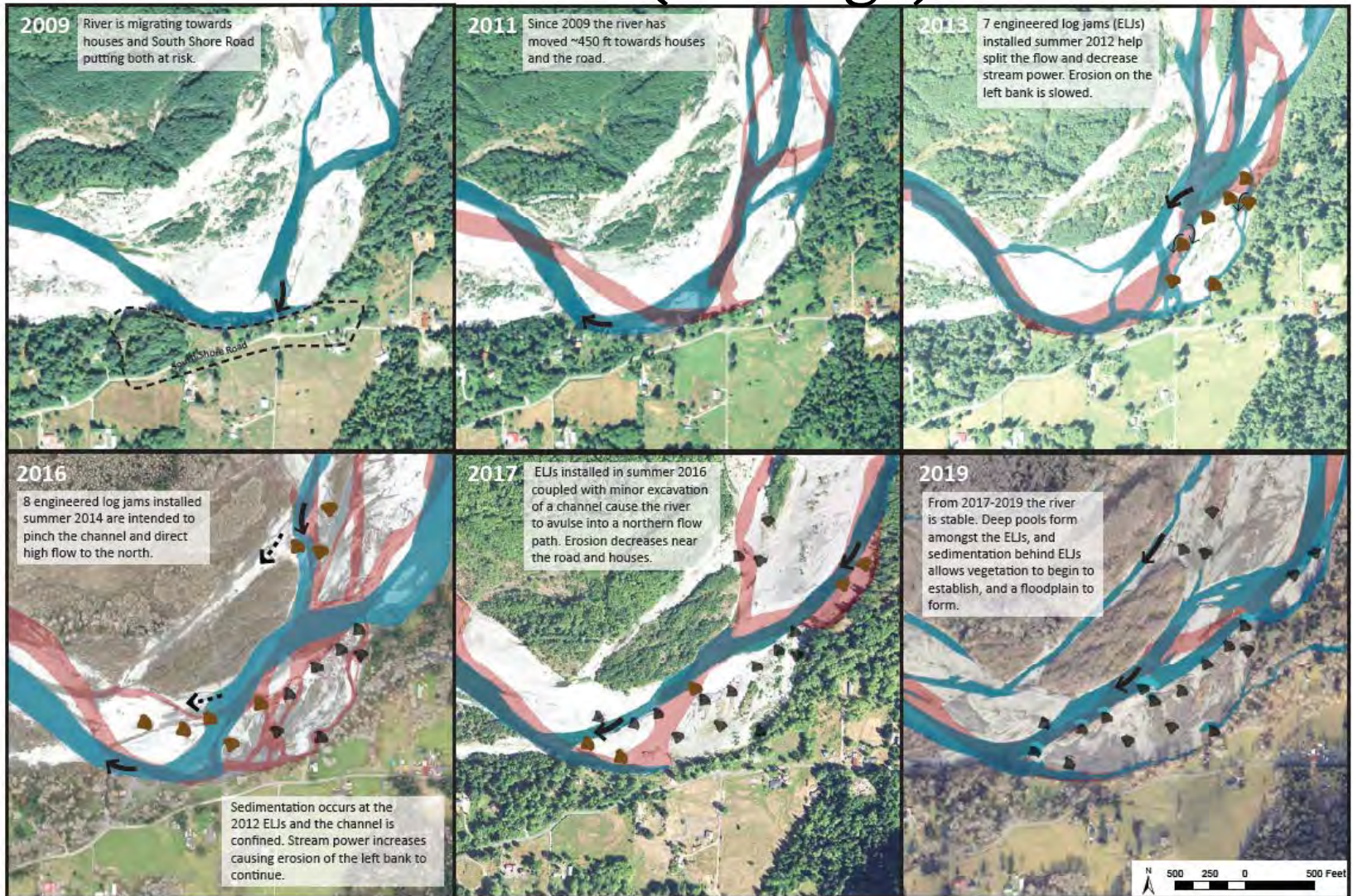
# Phase II (2021), Habitat Connectivity & Reach-Scale Aquatic, Riparian, and Floodplain Restoration



Red Outline = Phase I (2020)



# Photos (Analog)



**Key:**

<span style="display: inline-block; width: 15px; height: 15px; background-color: #00728f; border: 1px solid black;"></span> Existing Channel Location	<span style="display: inline-block; width: 15px; height: 15px; background-color: #c0392b; border: 1px solid black;"></span> Previous Channel Location	<span style="display: inline-block; width: 15px; height: 15px; background-color: #f39c12; border: 1px solid black;"></span> Most Recently Built ELJs	<span style="display: inline-block; width: 15px; height: 15px; background-color: #95a5a6; border: 1px solid black;"></span> Past Built ELJs
<span style="display: inline-block; width: 15px; height: 15px; background-color: #00728f; border: 1px solid black;"></span> Design Intent	<span style="display: inline-block; width: 15px; height: 15px; background-color: #c0392b; border: 1px solid black;"></span> Actual Flow Path		



# Photos (Analog)



Timber  
complex →



← Upper  
Quinault,  
South  
Shore Road

Deflector  
structures,  
Apex jam →



# Questions/More Information

Key Links

## Lower Satsop Restoration & Protection Program



(Keys Road Flooding, 1-27-2020, Port of Grays Harbor Photo)

-- PHASE I --

JARPA (submittal 3-27-2020, supplement 4-23-2020) → Click [here](#).

Lower Satsop Advisory Group Meeting (3-31-2020) → Click [here](#).

Lower Satsop Community Meeting (4-06-2020) → Click [here](#).

2020 Legislative Funding Request → FUNDED! See [here](#) (pg. 77).

- . Rep. Brian Blake & Rep. Jim Walsh (11-12-2019) → Click [here](#).
- . Sen. Dean Takko & Sen. Van De Wege (12-26-2019) → Click [here](#).
- . Letter of Support:
  - . Washington State Dairy Federation (2-04-2020) → Click [here](#).
  - . Grays Harbor Voluntary Stewardship Program (2-14-2020) → Click [here](#).
  - . Grays Harbor/Pacific County Farm Bureau (2-20-2020) → Click [here](#).

Overview/FAQ (12-16-2019) → Click [here](#).

Map → Click [here](#) (12-13-2019, All Phases), [here](#) (12-27-2019, Phase I)

Presentation (12-16-2019) → Click [here](#).

-- PHASE II --

2020-21 ASRP Funding Request:

- . Request For Proposals (issued 11-15-2019) → Click [here](#).
- . Funding Proposal (submitted 2-05-2020) → Click [here](#).

Organization	
Grays Harbor County	Rob Wilson 360/249-4222 <a href="mailto:RWilson@co.grays-harbor.wa.us">RWilson@co.grays-harbor.wa.us</a>
Natural Systems Design	Matt Tiedemann (through Aug) <a href="mailto:matt@naturaldes.com">matt@naturaldes.com</a> 206/462-1245
	Miranda Smith (after Aug) 206/480-1127 <a href="mailto:miranda@naturaldes.com">miranda@naturaldes.com</a>
Chehalis River Basin Flood Authority	Scott Boettcher 360/480-6600 <a href="mailto:scottb@sbgh-partners.com">scottb@sbgh-partners.com</a>

[https://www.ezview.wa.gov/site/alias\\_1492/37609/lower\\_satsop\\_restoration\\_and\\_protection\\_program.aspx](https://www.ezview.wa.gov/site/alias_1492/37609/lower_satsop_restoration_and_protection_program.aspx)



