



State of Washington
DEPARTMENT OF FISH AND WILDLIFE

Coastal Region • Region 6 • 48 Devonshire Road, Montesano, WA 98563-9618
Telephone: (360) 249-4628 • Fax: (360) 249-1229

Rob Wilson
Grays Harbor County
100 West Broadway, Suite 31
Montesano, WA 98563

RE: Restoration Pathway for Lower Satsop Restoration and Protection Program

Dear Mr. Wilson,

The Washington Department of Fish and Wildlife (WDFW) would like to thank you for providing the opportunity for coordination on the Lower Satsop Restoration and Protection Program. Restoration projects on land owned by WDFW provide additional opportunities to achieve the Department's mission. Often, these opportunities come with a complex suite of challenges to meet existing obligations and future goals. WDFW's Restoration Pathways process, is a way to ensure that restoration projects are collaboratively developed and well managed. WDFW lands in Region 6 provide important ecological and social value to local communities, and to the state.

The first step of the Pathway is to engage the Regional Director of WDFW with a project proposal. This was completed with your initial proposal letter dated August 21, 2020. This was followed up by a presentation to the Regional Management Team (RMT) on September 3, 2020. In addition to this proposal and presentation, additional WDFW Staff have been involved in an on-going Lower Satsop Planning Group, in which WDFW has had the opportunity to aid in the planning process and provide recommendations on the project that would allow the project to align with our Agency's mission. WDFW appreciates the amount of coordination and collaboration with various stakeholders during the planning and design phases of this project.

This project's location is adjacent to WDFW's own Lower Satsop project and will be able to provide continued coordination. We would like to continue to find ways that these two projects can work in concert, improve resources, and even find cost-savings.

WDFW feels that Lower Satsop Restoration and Protection Program aligns with criteria that was developed to evaluate restoration projects through the Restoration Pathway Process, and is in support of this project, as it is currently designed. We look forward to further coordination as the project progresses, and plans continue to move onto the 100% level. As future phases of this project are developed, we would appreciate being involved as early as possible to ensure that these phases also align with the criteria within our Restoration Pathway Process.

If you have any question, please do not hesitate to contact me at Larry.Phillips@dfw.wa.gov or at (360) 249-1211.

Sincerely,

A handwritten signature in black ink, appearing to read "Larry Phillips". The signature is fluid and cursive, with the first name "Larry" and last name "Phillips" clearly distinguishable.

Larry Phillips
WDFW Regional Director, Region 6



August 21, 2019

SENT Via Email

Mr. Larry Phillips, Regional Director
WA State Department of Fish and Wildlife, Region 6
48 Devonshire Road
Montesano, WA 98563

RE: Initial Letter, Restoration Pathway for Lower Satsop Restoration and Protection Program

Dear Mr. Phillips:

I am writing in my capacity as Chair of the Chehalis River Basin Flood Authority, as well Chair of the Chehalis Basin Board, and a Grays Harbor County Commissioner. My purpose is to provide you with an initial introduction to the restoration work being proposed and scheduled for the Lower Satsop for the 2020 construction season. We are looking forward to providing a more in-depth description of the Lower Satsop Restoration and Protection Program at your 9/03/2019 Regional Management Team meeting.

The mission of the Chehalis River Basin Flood Authority is to minimize hazards associated with flooding and catastrophic flooding and do so without further impact to people, property, and the environment. Protecting people, property and infrastructure in ways that also enhance and restore the natural environment (fish, habitat, floodplain functions, etc.) is central to how the Flood Authority approaches its work. The Lower Satsop is no exception.

Grays Harbor County is lead on the Lower Satsop Restoration and Protection Program and currently sponsoring two interrelated projects between the Highway 12 bridge and the confluence with the Chehalis River. These are:

- Project #1 Keys Road Flood Protection Project, for infrastructure protection; and
- Project #2 Lower Satsop Assessment and Design Project, for floodplain restoration and aquatic habitat.

The Keys Road Protection project will adopt portions of the Assessment and Design project at locations where Keys Road and the Port of Grays Harbor potable water well are at risk from channel migration. The goals and objectives of the Assessment and Design Project will be primary drivers for the design of the Keys Road Flood Protection Project. Design elements will

include a setback timber complex and engineered log jam (ELJ) structures that will improve aquatic habitat by creating deep pools, sorting sediment, and providing cover while reducing erosion of fine soils. This design will leverage natural processes to arrest the migration of the river toward Keys Road and the Port's well. The setback timber complex is a safeguard in the unlikely event of the river flanking the ELJs. The timber complex design is a more aggressive line that functions similarly to the ELJs by providing resistance to stream power. The more the stream interacts with the structures the greater resistance to flow they will provide. These design features will interact with the river and stabilize the locations where the road is at risk. The river will still be able to migrate within the current migration zone.

Project elements for projects #1 and #2 are being developed in close coordination with WDFW's Floodplain Restoration Project (Lower Satsop project #3). Hydraulic analysis of proposed structures and the removal of the rock revetment on WDFW property will be conducted as part of a risk assessment for Keys Road.

While this is a very brief introduction to the restoration work proposed in the Lower Satsop for 2020, I hope you find it satisfactory. We will provide a fuller, more comprehensive presentation when we meet 9/03/2019. In the meanwhile, you may also find the attached map helpful as it lays out the geographic scope and scale of proposed 2020 activities.

If you have any questions, or need further information, please feel free to contact me. You may also contact Scott Boettcher (staff to the Flood Authority) at 360/480-6600, scottb@sbgh-partners.com.

Sincerely,

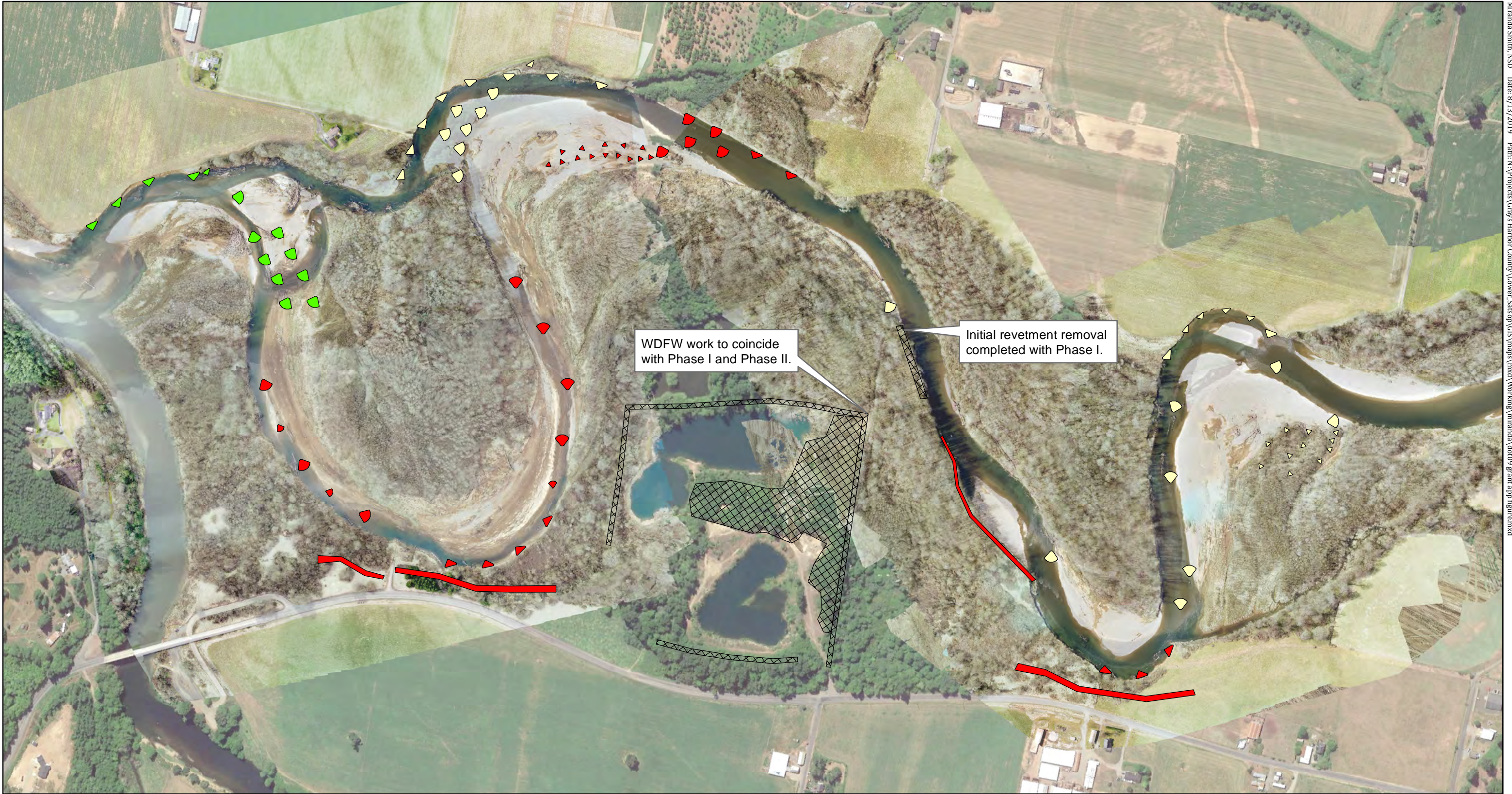


Vickie Raines, Chair
Chehalis River Basin Flood Authority
360/590-4100
vraines@co.grays-harbor.wa.us

CC: Correspondence File

Rob Wilson, Grays Harbor County
Michelle Cramer, Doris Small, Amy Spoon, WA State Department of Fish and Wildlife
Alissa Shay and Randy Lewis, Port of Grays Harbor
Tom Kollasch and Anthony Waldrop, Grays Harbor Conservation District
Miranda Smith, Natural Systems Design
Andrea McNamara Doyle and Chrissy Bailey, WA State Office of Chehalis Basin

Attachment

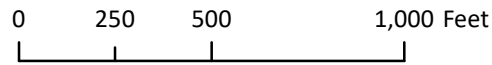


Lower Satsop Reach Scale Assessment and Design: Protecting Infrastructure, Restoring Floodplain Function, and Reducing Erosion and Sedimentation.





Preliminary Design Phased Construction Plan

Aerial imagery 2017 NAIP with 2019 Drone Imagery

Lambert conformal conic projection, NAD 1983
State Plane Coordinate System (WA South Zone)



Project Phase

-  Phase I, 2019
-  Phase II, 2020
-  Phase III, 2021-2022
-  Phase IV, 2022-2023



Grays Harbor
Conservation
District

your window to healthy lands

