

Shellfish Farming in Willapa Bay & Grays Harbor

Home of the Worlds “*Friendliest*” Catch

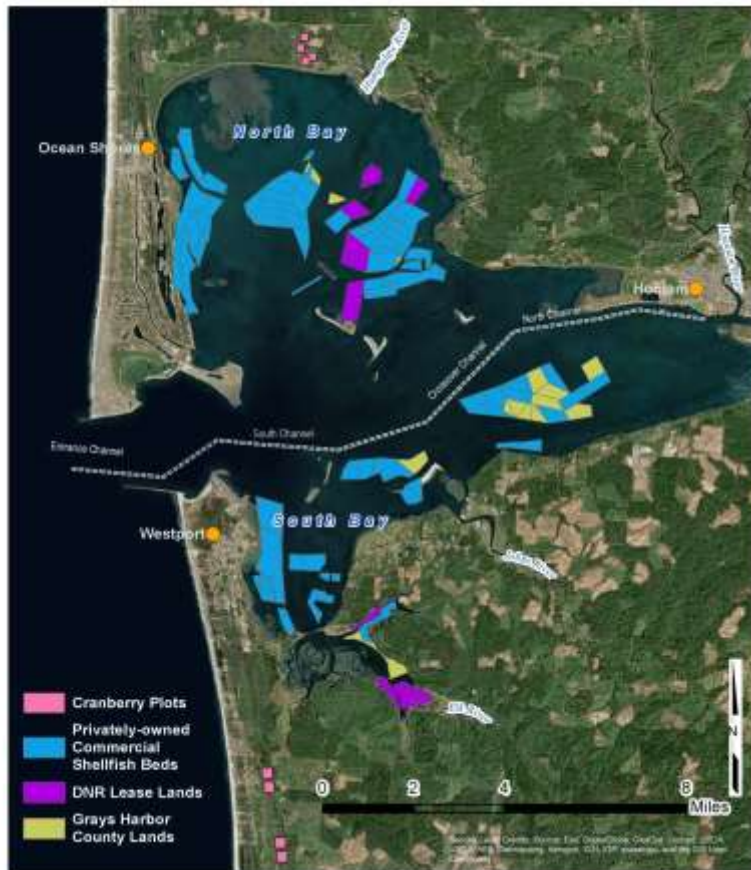


Shellfish Beds in Willapa Bay



- $\approx 70,000$ Acres in the Willapa Bay Estuary.
- $\approx 9,000$ Acres Actively Cultivated
- $\approx 10,000$ Acres Oyster Reserve managed by WDFW

Shellfish Beds in Grays Harbor



- \approx 60,000 Acres in the Grays Harbor Estuary
- \approx 900 Acres Actively Cultivated

Constantly Looking for Solutions



Constantly Looking for Solutions



Economics of Shellfish in Our Region

- \approx 25% of all the oysters in the NATION come from Willapa Bay/Grays Harbor.
- Willapa Bay is the largest producer of farmed oysters in the United States.
- Majority of shellfish is sold out of state and even out of country, bringing much needed outside dollars into our economy.

JOBS

- Shellfish Aquaculture is the largest private employer in Pacific County
- 2010 Shellfish Payroll in Pacific County was ≈\$45 million. (≈1580 jobs)
- Significant private employer in Grays Harbor County.
- 2010 Shellfish Payroll in Grays Harbor County was ≈\$6 million. (≈210 jobs)

Ghost Shrimp



Biodiversity of An Oyster Bed



Loss of Biodiversity & Habitat



Species Diversity



Loss of Habitat due to Burrowing Shrimp



Shrimp Activity Buries Life



Long line culture buried by shrimp in Willapa



