

Chehalis River Basin Flood Authority

*Reducing Flood Damage and
Restoring Aquatic Species*

Thurston County

July 16, 2025

2007 Storm

- \$938M Basin-wide damage, \$300M lost economic activity (WA).



Exit 77 (I-5) in Chehalis
STEVE RINGMAN / SEATTLE TIMES



City of Centralia
STEVE RINGMAN / SEATTLE TIMES



↑
← **Photos Source:** LEWIS COUNTY,
DIVISION OF EMERGENCY
MANAGEMENT

2 of 15



**State Route 6,
West of Adna**
MIKE
SALSBURY /
AP

Today's Presentation

- “Flood Authority”

- #1 -- Local Projects

- #2 -- Flood Warning System

- “Chehalis River Basin Flood Control Zone District”

- #3 -- Proposed Flow-through Dam for Flood Control



**CHEHALIS
RIVER BASIN**
FLOOD CONTROL
ZONE DISTRICT



Office of
Chehalis Basin

Chehalis Basin
Board

<https://chehalisbasinstrategy.com/>

Chehalis River Basin Flood Authority

- **Formed** in 2008
- **Focused on** flood hazard mitigation
- **Decision-making**
 - informed by science
 - protective of Basin residents/communities
 - environmentally appropriate
- **Jurisdictions** represented (see [inter-local agreement](#))
 - Grays Harbor County (2008)
 - City of Aberdeen (2008)
 - City of Cosmopolis (2011)
 - City of Hoquiam (2017)
 - City of Montesano (2008)
 - City of Oakville (2008)
 - Lewis County (2008)
 - City of Centralia (2008)
 - City of Chehalis (2008)
 - City of Napavine (2011)
 - Town of Pe Ell (2008)



- Thurston County (2008)
 - Town of Bucoda (2008)

***Help local communities identify, develop, implement
local flood hazard reduction solutions.***

Local Projects Completed 2012-25

149 

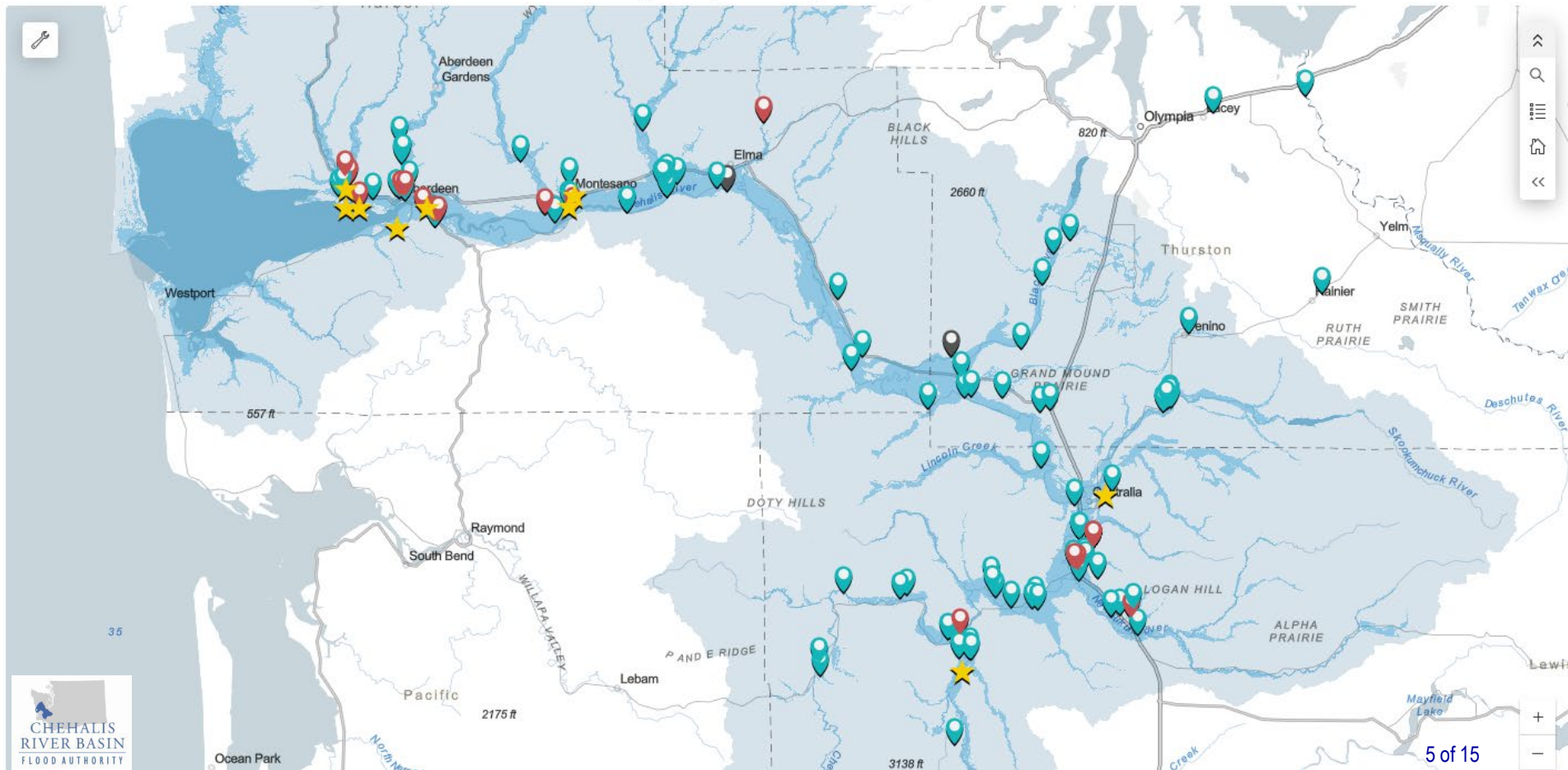
Selected Projects

 630

Average Days to Project Completion

 \$87.5M

Combined Cost



Local Projects (Pe Ell, 2014)



- ✓ Project = Design/construct 900' dike (between Chehalis river and WWTP).
- ✓ Cost = \$521,000.
- ✓ Photos = [Here](#).
- ✓ Website = [Here](#).

Local Projects (Chehalis-Centralia Airport, 2017)



- ✓ Completed -- Fall 2017.
- ✓ Cost -- \$1.14M.
- ✓ January 2022 Flood Event – Pumped 518.4M gallons over many days to keep levee dry.
- ✓ ROI (2018) -- Protects \$45M in assets, ensures \$9M in annual tax revenue.

Read More -- [Here](#).



← Previous
WWII-era
pump

Local Projects (Montesano, 2017-2020)

- ✓ Protect WWTP from on-coming Wynoochee river using 220+ “log-jacks.”
- ✓ \$2 million (for “log-jacks”).
- ✓ Small cost compared to WWTP relocation and environmental cleanup (in event of WWTP breaching).

Project End



<https://www.google.com/maps/@46.9678637,-123.6077821,197m/data=!3m1!1e3>



Project Start



Governor Inslee and Mayor Samuel stand overlooking the Wynoochee River.

July 7, 2022 →

Local Projects (Bucoda, 2016)

ELEVATION CERTIFICATE
U.S. DEPARTMENT OF HOMELAND SECURITY
FEDERAL EMERGENCY MANAGEMENT AGENCY
National Flood Insurance Program

OMB No. 1560-0008
Expiration Date: July 31, 2015

SECTION A - PROPERTY INFORMATION

A1. Building Owner's Name: **Colleen M. Tee**

A2. Building Address (including Apt., Unit, Suite, and/or Bldg. No.) or R.O. Route and Box No.:
3501 N. Market Street

City: **Bucoda** State: **WA** ZIP Code: **98530**

A3. Property Description (Lot and Block Numbers, Tax Parcel Number, Legal Description, etc.):
Tax Parcel No. **6180030050**

A4. Building use (e.g., Residential, Non-Residential, Addition, Accessory, etc.): **Residential**

A5. Latitude/Longitude (Lat. **46.462822° N**, Long. **122.426341° W**, Horizontal Datum: ☐ NAD 1927 ☒ NAD 1983)

A6. Elevation of finished floor of the building if the Certificate is being used to obtain flood insurance:
a) For a building with a crawlspace or enclosure(s):
i) Square footage of crawlspace or enclosure(s): **550** sq ft
ii) Number of permanent flood openings in the crawlspace or enclosure(s) within 1.0 foot above adjacent grade: **4**
iii) Total net area of flood openings in A6.i: **312** sq ft
iv) Engineered flood openings? ☒ Yes ☐ No

A7. For a building with an attached garage:
i) Square footage of attached garage: **50** sq ft
ii) Number of permanent flood openings in the attached garage within 1.0 foot above adjacent grade: **0**
iii) Total net area of flood openings in A6.i: **312** sq ft
iv) Engineered flood openings? ☐ Yes ☒ No

SECTION B - FLOOD INSURANCE RATE MAP (FIRM) INFORMATION

B1. FIRM Community Name & Community Number: **BUCODA, WA 1501000**

B2. Date of Flood Insurance Rate Map: **10/16/2012**

B3. FIRM Panel Effective Date: **10/16/2012**

B4. Map/Panel Number: **5307C0486**

B5. Zone: **E**

B6. FIRM Index Date: **09/02/1981**

B7. FIRM Panel Effective Date: **10/16/2012**

B8. Flood Zone(s): **AE**

B9. Base Flood Elevation(s) (Zone): **255.0'**

B10. Indicate the source of the Base Flood Elevation (BFE) data or base flood depth entered in item B9:
☐ FIRM Profile ☒ FIRM ☐ Community Determined ☐ Other Source: _____

B11. Indicate elevation datum used for BFE in item B9: ☐ NGVD 1929 ☒ NAVD 1988 ☐ Other Source: _____

B12. Is the building located in a Coastal Barrier Resources System (CBRS) area or Otherwise Protected Area (OPA)? ☐ Yes ☒ No

Designation Date: **09/02/1981** ☐ CBRS ☐ OPA

SECTION C - BUILDING ELEVATION INFORMATION (SURVEY REQUIRED)

C1. Building elevations are based on: ☐ Construction Drawings* ☐ Building Under Construction* ☒ Personal Construction

* A new Elevation Certificate will be required when construction of the building is complete.

C2. Elevations - Zones AE, AH, AL, A1, A2, A3, A4, A5, A6, A7, A8, A9, AR, AR1, AR2, AR3, AR4, AR5, AR6, AR7, AR8, AR9, AR10, AR11, AR12, AR13, AR14, AR15, AR16, AR17, AR18, AR19, AR20, AR21, AR22, AR23, AR24, AR25, AR26, AR27, AR28, AR29, AR30, AR31, AR32, AR33, AR34, AR35, AR36, AR37, AR38, AR39, AR40, AR41, AR42, AR43, AR44, AR45, AR46, AR47, AR48, AR49, AR50, AR51, AR52, AR53, AR54, AR55, AR56, AR57, AR58, AR59, AR60, AR61, AR62, AR63, AR64, AR65, AR66, AR67, AR68, AR69, AR70, AR71, AR72, AR73, AR74, AR75, AR76, AR77, AR78, AR79, AR80, AR81, AR82, AR83, AR84, AR85, AR86, AR87, AR88, AR89, AR90, AR91, AR92, AR93, AR94, AR95, AR96, AR97, AR98, AR99, AR100, AR101, AR102, AR103, AR104, AR105, AR106, AR107, AR108, AR109, AR110, AR111, AR112, AR113, AR114, AR115, AR116, AR117, AR118, AR119, AR120, AR121, AR122, AR123, AR124, AR125, AR126, AR127, AR128, AR129, AR130, AR131, AR132, AR133, AR134, AR135, AR136, AR137, AR138, AR139, AR140, AR141, AR142, AR143, AR144, AR145, AR146, AR147, AR148, AR149, AR150, AR151, AR152, AR153, AR154, AR155, AR156, AR157, AR158, AR159, AR160, AR161, AR162, AR163, AR164, AR165, AR166, AR167, AR168, AR169, AR170, AR171, AR172, AR173, AR174, AR175, AR176, AR177, AR178, AR179, AR180, AR181, AR182, AR183, AR184, AR185, AR186, AR187, AR188, AR189, AR190, AR191, AR192, AR193, AR194, AR195, AR196, AR197, AR198, AR199, AR200, AR201, AR202, AR203, AR204, AR205, AR206, AR207, AR208, AR209, AR210, AR211, AR212, AR213, AR214, AR215, AR216, AR217, AR218, AR219, AR220, AR221, AR222, AR223, AR224, AR225, AR226, AR227, AR228, AR229, AR230, AR231, AR232, AR233, AR234, AR235, AR236, AR237, AR238, AR239, AR240, AR241, AR242, AR243, AR244, AR245, AR246, AR247, AR248, AR249, AR250, AR251, AR252, AR253, AR254, AR255, AR256, AR257, AR258, AR259, AR260, AR261, AR262, AR263, AR264, AR265, AR266, AR267, AR268, AR269, AR270, AR271, AR272, AR273, AR274, AR275, AR276, AR277, AR278, AR279, AR280, AR281, AR282, AR283, AR284, AR285, AR286, AR287, AR288, AR289, AR290, AR291, AR292, AR293, AR294, AR295, AR296, AR297, AR298, AR299, AR300, AR301, AR302, AR303, AR304, AR305, AR306, AR307, AR308, AR309, AR310, AR311, AR312, AR313, AR314, AR315, AR316, AR317, AR318, AR319, AR320, AR321, AR322, AR323, AR324, AR325, AR326, AR327, AR328, AR329, AR330, AR331, AR332, AR333, AR334, AR335, AR336, AR337, AR338, AR339, AR340, AR341, AR342, AR343, AR344, AR345, AR346, AR347, AR348, AR349, AR350, AR351, AR352, AR353, AR354, AR355, AR356, AR357, AR358, AR359, AR360, AR361, AR362, AR363, AR364, AR365, AR366, AR367, AR368, AR369, AR370, AR371, AR372, AR373, AR374, AR375, AR376, AR377, AR378, AR379, AR380, AR381, AR382, AR383, AR384, AR385, AR386, AR387, AR388, AR389, AR390, AR391, AR392, AR393, AR394, AR395, AR396, AR397, AR398, AR399, AR400, AR401, AR402, AR403, AR404, AR405, AR406, AR407, AR408, AR409, AR410, AR411, AR412, AR413, AR414, AR415, AR416, AR417, AR418, AR419, AR420, AR421, AR422, AR423, AR424, AR425, AR426, AR427, AR428, AR429, AR430, AR431, AR432, AR433, AR434, AR435, AR436, AR437, AR438, AR439, AR440, AR441, AR442, AR443, AR444, AR445, AR446, AR447, AR448, AR449, AR450, AR451, AR452, AR453, AR454, AR455, AR456, AR457, AR458, AR459, AR460, AR461, AR462, AR463, AR464, AR465, AR466, AR467, AR468, AR469, AR470, AR471, AR472, AR473, AR474, AR475, AR476, AR477, AR478, AR479, AR480, AR481, AR482, AR483, AR484, AR485, AR486, AR487, AR488, AR489, AR490, AR491, AR492, AR493, AR494, AR495, AR496, AR497, AR498, AR499, AR500, AR501, AR502, AR503, AR504, AR505, AR506, AR507, AR508, AR509, AR510, AR511, AR512, AR513, AR514, AR515, AR516, AR517, AR518, AR519, AR520, AR521, AR522, AR523, AR524, AR525, AR526, AR527, AR528, AR529, AR530, AR531, AR532, AR533, AR534, AR535, AR536, AR537, AR538, AR539, AR540, AR541, AR542, AR543, AR544, AR545, AR546, AR547, AR548, AR549, AR550, AR551, AR552, AR553, AR554, AR555, AR556, AR557, AR558, AR559, AR560, AR561, AR562, AR563, AR564, AR565, AR566, AR567, AR568, AR569, AR570, AR571, AR572, AR573, AR574, AR575, AR576, AR577, AR578, AR579, AR580, AR581, AR582, AR583, AR584, AR585, AR586, AR587, AR588, AR589, AR590, AR591, AR592, AR593, AR594, AR595, AR596, AR597, AR598, AR599, AR600, AR601, AR602, AR603, AR604, AR605, AR606, AR607, AR608, AR609, AR610, AR611, AR612, AR613, AR614, AR615, AR616, AR617, AR618, AR619, AR620, AR621, AR622, AR623, AR624, AR625, AR626, AR627, AR628, AR629, AR630, AR631, AR632, AR633, AR634, AR635, AR636, AR637, AR638, AR639, AR640, AR641, AR642, AR643, AR644, AR645, AR646, AR647, AR648, AR649, AR650, AR651, AR652, AR653, AR654, AR655, AR656, AR657, AR658, AR659, AR660, AR661, AR662, AR663, AR664, AR665, AR666, AR667, AR668, AR669, AR670, AR671, AR672, AR673, AR674, AR675, AR676, AR677, AR678, AR679, AR680, AR681, AR682, AR683, AR684, AR685, AR686, AR687, AR688, AR689, AR690, AR691, AR692, AR693, AR694, AR695, AR696, AR697, AR698, AR699, AR700, AR701, AR702, AR703, AR704, AR705, AR706, AR707, AR708, AR709, AR710, AR711, AR712, AR713, AR714, AR715, AR716, AR717, AR718, AR719, AR720, AR721, AR722, AR723, AR724, AR725, AR726, AR727, AR728, AR729, AR730, AR731, AR732, AR733, AR734, AR735, AR736, AR737, AR738, AR739, AR740, AR741, AR742, AR743, AR744, AR745, AR746, AR747, AR748, AR749, AR750, AR751, AR752, AR753, AR754, AR755, AR756, AR757, AR758, AR759, AR760, AR761, AR762, AR763, AR764, AR765, AR766, AR767, AR768, AR769, AR770, AR771, AR772, AR773, AR774, AR775, AR776, AR777, AR778, AR779, AR780, AR781, AR782, AR783, AR784, AR785, AR786, AR787, AR788, AR789, AR790, AR791, AR792, AR793, AR794, AR795, AR796, AR797, AR798, AR799, AR800, AR801, AR802, AR803, AR804, AR805, AR806, AR807, AR808, AR809, AR810, AR811, AR812, AR813, AR814, AR815, AR816, AR817, AR818, AR819, AR820, AR821, AR822, AR823, AR824, AR825, AR826, AR827, AR828, AR829, AR830, AR831, AR832, AR833, AR834, AR835, AR836, AR837, AR838, AR839, AR840, AR841, AR842, AR843, AR844, AR845, AR846, AR847, AR848, AR849, AR850, AR851, AR852, AR853, AR854, AR855, AR856, AR857, AR858, AR859, AR860, AR861, AR862, AR863, AR864, AR865, AR866, AR867, AR868, AR869, AR870, AR871, AR872, AR873, AR874, AR875, AR876, AR877, AR878, AR879, AR880, AR881, AR882, AR883, AR884, AR885, AR886, AR887, AR888, AR889, AR890, AR891, AR892, AR893, AR894, AR895, AR896, AR897, AR898, AR899, AR900, AR901, AR902, AR903, AR904, AR905, AR906, AR907, AR908, AR909, AR910, AR911, AR912, AR913, AR914, AR915, AR916, AR917, AR918, AR919, AR920, AR921, AR922, AR923, AR924, AR925, AR926, AR927, AR928, AR929, AR930, AR931, AR932, AR933, AR934, AR935, AR936, AR937, AR938, AR939, AR940, AR941, AR942, AR943, AR944, AR945, AR946, AR947, AR948, AR949, AR950, AR951, AR952, AR953, AR954, AR955, AR956, AR957, AR958, AR959, AR960, AR961, AR962, AR963, AR964, AR965, AR966, AR967, AR968, AR969, AR970, AR971, AR972, AR973, AR974, AR975, AR976, AR977, AR978, AR979, AR980, AR981, AR982, AR983, AR984, AR985, AR986, AR987, AR988, AR989, AR990, AR991, AR992, AR993, AR994, AR995, AR996, AR997, AR998, AR999, AR1000, AR1001, AR1002, AR1003, AR1004, AR1005, AR1006, AR1007, AR1008, AR1009, AR1010, AR1011, AR1012, AR1013, AR1014, AR1015, AR1016, AR1017, AR1018, AR1019, AR1020, AR1021, AR1022, AR1023, AR1024, AR1025, AR1026, AR1027, AR1028, AR1029, AR1030, AR1031, AR1032, AR1033, AR1034, AR1035, AR1036, AR1037, AR1038, AR1039, AR1040, AR1041, AR1042, AR1043, AR1044, AR1045, AR1046, AR1047, AR1048, AR1049, AR1050, AR1051, AR1052, AR1053, AR1054, AR1055, AR1056, AR1057, AR1058, AR1059, AR1060, AR1061, AR1062, AR1063, AR1064, AR1065, AR1066, AR1067, AR1068, AR1069, AR1070, AR1071, AR1072, AR1073, AR1074, AR1075, AR1076, AR1077, AR1078, AR1079, AR1080, AR1081, AR1082, AR1083, AR1084, AR1085, AR1086, AR1087, AR1088, AR1089, AR1090, AR1091, AR1092, AR1093, AR1094, AR1095, AR1096, AR1097, AR1098, AR1099, AR1100, AR1101, AR1102, AR1103, AR1104, AR1105, AR1106, AR1107, AR1108, AR1109, AR1110, AR1111, AR1112, AR1113, AR1114, AR1115, AR1116, AR1117, AR1118, AR1119, AR1120, AR1121, AR1122, AR1123, AR1124, AR1125, AR1126, AR1127, AR1128, AR1129, AR1130, AR1131, AR1132, AR1133, AR1134, AR1135, AR1136, AR1137, AR1138, AR1139, AR1140, AR1141, AR1142, AR1143, AR1144, AR1145, AR1146, AR1147, AR1148, AR1149, AR1150, AR1151, AR1152, AR1153, AR1154, AR1155, AR1156, AR1157, AR1158, AR1159, AR1160, AR1161, AR1162, AR1163, AR1164, AR1165, AR1166, AR1167, AR1168, AR1169, AR1170, AR1171, AR1172, AR1173, AR1174, AR1175, AR1176, AR1177, AR1178, AR1179, AR1180, AR1181, AR1182, AR1183, AR1184, AR1185, AR1186, AR1187, AR1188, AR1189, AR1190, AR1191, AR1192, AR1193, AR1194, AR1195, AR1196, AR1197, AR1198, AR1199, AR1200, AR1201, AR1202, AR1203, AR1204, AR1205, AR1206, AR1207, AR1208, AR1209, AR1210, AR1211, AR1212, AR1213, AR1214, AR1215, AR1216, AR1217, AR1218, AR1219, AR1220, AR1221, AR1222, AR1223, AR1224, AR1225, AR1226, AR1227, AR1228, AR1229, AR1230, AR1231, AR1232, AR1233, AR1234, AR1235, AR1236, AR1237, AR1238, AR1239, AR1240, AR1241, AR1242, AR1243, AR1244, AR1245, AR1246, AR1247, AR1248, AR1249, AR1250, AR1251, AR1252, AR1253, AR1254, AR1255, AR1256, AR1257, AR1258, AR1259, AR1260, AR1261, AR1262, AR1263, AR1264, AR1265, AR1266, AR1267, AR1268, AR1269, AR1270, AR1271, AR1272, AR1273, AR1274, AR1275, AR1276, AR1277, AR1278, AR1279, AR1280, AR1281, AR1282, AR1283, AR1284, AR1285, AR1286, AR1287, AR1288, AR1289, AR1290, AR1291, AR1292, AR1293, AR1294, AR1295, AR1296, AR1297, AR1298, AR1299, AR1300, AR1301, AR1302, AR1303, AR1304, AR1305, AR1306, AR1307, AR1308, AR1309, AR1310, AR1311, AR1312, AR1313, AR1314, AR1315, AR1316, AR1317, AR1318, AR1319, AR1320, AR1321, AR1322, AR1323, AR1324, AR1325, AR1326, AR1327, AR1328, AR1329, AR1330, AR1331, AR1332, AR1333, AR1334, AR1335, AR1336, AR1337, AR1338, AR1339, AR1340, AR1341, AR1342, AR1343, AR1344, AR1345, AR1346, AR1347, AR1348, AR1349, AR1350, AR1351, AR1352, AR1353, AR1354, AR1355, AR1356, AR1357, AR1358, AR1359, AR1360, AR1361, AR1362, AR1363, AR1364, AR1365, AR1366, AR1367, AR1368, AR1369, AR1370, AR1371, AR1372, AR1373, AR1374, AR1375, AR1376, AR1377, AR1378, AR1379, AR1380, AR1381, AR1382, AR1383, AR1384, AR1385, AR1386, AR1387, AR1388, AR1389, AR1390, AR1391, AR1392, AR1393, AR1394, AR1395, AR1396, AR1397, AR1398, AR1399, AR1400, AR1401, AR1402, AR1403, AR1404, AR1405, AR1406, AR1407, AR1408, AR1409, AR1410, AR1411, AR1412, AR1413, AR1414, AR1415, AR1416, AR1417, AR1418, AR1419, AR1420, AR1421, AR1422, AR1423, AR1424, AR1425, AR1426, AR1427, AR1428, AR1429, AR1430, AR1431, AR1432, AR1433, AR1434, AR1435, AR1436, AR1437, AR1438, AR1439, AR1440, AR1441, AR1442, AR1443, AR1444, AR1445, AR1446, AR1447, AR1448, AR1449, AR1450, AR1451, AR1452, AR1453, AR1454, AR1455, AR1456, AR1457, AR1458, AR1459, AR1460, AR1461, AR1462, AR1463, AR1464, AR1465, AR1466, AR1467, AR1468, AR1469, AR1470, AR1471, AR1472, AR1473, AR1474, AR1475, AR1476, AR1477, AR1478, AR1479, AR1480, AR1481, AR1482, AR1483, AR1484, AR1485, AR1486, AR1487, AR1488, AR1489, AR1490, AR1491, AR1492, AR1493, AR1494, AR1495, AR1496, AR1497, AR1498, AR1499, AR1500, AR1501, AR1502, AR1503, AR1504, AR1505, AR1506, AR1507, AR1508, AR1509, AR1510, AR1511, AR1512, AR1513, AR1514, AR1515, AR1516, AR1517, AR1518, AR1519, AR1520, AR1521, AR1522, AR1523, AR1524, AR1525, AR1526, AR1527, AR1528, AR1529, AR1530, AR1531, AR1532, AR1533, AR1534, AR1535, AR1536, AR1537, AR1538, AR1539, AR1540, AR1541, AR1542, AR1543, AR1544, AR1545, AR1546, AR1547, AR1548, AR1549, AR1550, AR1551, AR1552, AR1553, AR1554, AR1555, AR1556, AR1557, AR1558, AR1559, AR1560, AR1561, AR1562, AR1563, AR1564, AR1565, AR1566, AR1567, AR1568, AR1569, AR1570, AR1571, AR1572, AR1573, AR1574, AR1575, AR1576, AR1577, AR1578, AR1579, AR1580, AR1581, AR1582, AR1583, AR1584, AR1585, AR1586, AR1587, AR1588, AR1589, AR1590, AR1591, AR1592, AR1593, AR1594, AR1595, AR1596, AR1597, AR1598, AR1599, AR1600, AR1601, AR1602, AR1603, AR1604, AR1605, AR1606, AR1607, AR1608, AR1609, AR1610, AR1611, AR1612, AR1613, AR1614, AR1615, AR1616, AR1617, AR1618, AR1619, AR1620, AR1621, AR1622, AR1623, AR1624, AR1625, AR1626, AR1627, AR1628, AR1629, AR1630, AR1631, AR1632, AR1633, AR1634, AR1635, AR1636, AR1637, AR1638, AR1639, AR1640, AR1641, AR1642, AR1643, AR1644, AR1645, AR1646, AR1647, AR1648, AR1649, AR1650, AR1651, AR1652, AR1653, AR1654, AR1655, AR1656, AR1657, AR1658, AR1659, AR1660, AR1661, AR1662, AR1663, AR1664, AR1665, AR1666, AR1667, AR1668, AR1669, AR1670, AR1671, AR1672, AR1673, AR1674, AR1675, AR1676, AR1677, AR1678, AR1679, AR1680, AR1681, AR1682, AR1683, AR1684, AR1685, AR1686, AR1687, AR1688, AR1689, AR1690, AR1691, AR1692, AR1693, AR1694, AR1695, AR1696, AR1697, AR1698, AR1699, AR1700, AR1701, AR1702, AR1703, AR1704, AR1705, AR1706, AR1707, AR1708, AR1709, AR1710, AR1711, AR1712, AR1713, AR1714, AR1715, AR1716, AR1717, AR1718, AR1719, AR1720, AR1721, AR1722, AR1723, AR1724, AR1725, AR1726, AR1727, AR1728, AR1729, AR1730, AR1731, AR1732, AR1733, AR1734, AR1735, AR1736, AR1737, AR1738, AR1739, AR1740, AR1741, AR1742, AR1743, AR1744, AR1745, AR1746, AR1747, AR1748, AR1749, AR1750, AR1751, AR1752, AR1753, AR1754, AR1755, AR1756, AR1757, AR1758, AR1759, AR1760, AR1761, AR1762, AR1763, AR1764, AR1765, AR1766, AR1767, AR1768, AR1769, AR1770, AR1771, AR1772, AR1773, AR1774, AR1775, AR1776, AR1777, AR1778, AR1779, AR1780, AR1781, AR1782, AR1783, AR1784, AR1785, AR1786, AR1787, AR1788, AR1789, AR1790, AR1791, AR1792, AR1793, AR1794, AR1795, AR1796, AR1797, AR1798, AR1799, AR1800, AR1801, AR1802, AR1803, AR1804, AR1805, AR1806, AR1807, AR1808, AR1809, AR1810, AR1811, AR1812, AR1813, AR1814, AR1815, AR1816, AR1817, AR1818, AR1819, AR1820, AR1821, AR1822, AR1823, AR1824, AR1825, AR1826, AR1827, AR1828, AR1829, AR1830, AR1831, AR1832, AR1833, AR1834, AR1835, AR1836, AR1837, AR1838, AR1839, AR1840, AR1841, AR1842, AR1843, AR1844, AR1845, AR1846, AR1847, AR1848, AR1849, AR1850, AR1851, AR1852, AR1853, AR1854, AR1855, AR1856, AR1857, AR1858, AR1859, AR1860, AR1861, AR1862, AR1863, AR1864, AR1865, AR1866, AR1867, AR1868, AR1869, AR1870, AR1871, AR1872, AR1873, AR1874, AR1875, AR1876, AR1877, AR1878, AR1879, AR1880, AR1881, AR1882, AR1883, AR1884, AR1885, AR1886, AR1887, AR1888, AR1889, AR1890, AR1891, AR1892, AR1893, AR1894, AR1895, AR1896, AR1897, AR1898, AR1899, AR1900, AR1901, AR1902, AR1903, AR1904, AR1905, AR1906, AR1907, AR1908, AR1909, AR1910, AR1911, AR1912, AR1913, AR1914, AR1915, AR1916, AR1917, AR1918, AR1919, AR1920, AR1921, AR1922, AR1923, AR1924, AR1925, AR1926, AR1927, AR1928, AR1929, AR1930, AR1931, AR1932, AR1933, AR1934, AR1935, AR1936, AR1937, AR1938, AR1939, AR1940, AR1941, AR1942, AR1943, AR1944, AR1945, AR1946, AR1947, AR1948, AR1949, AR1950, AR1951, AR1952, AR1953, AR1954, AR1955, AR1956, AR1957, AR1958, AR1959, AR1960, AR1961, AR1962, AR1963, AR1964, AR1965, AR1966, AR1967, AR1968, AR1969, AR1970, AR1971, AR1972, AR1973, AR1974, AR1975, AR1976, AR1977, AR1978, AR1979, AR1980, AR1981, AR1982, AR1983, AR1984, AR1985, AR1986, AR1987, AR1988, AR1989, AR1990, AR1991, AR1992, AR1993, AR1994, AR1995, AR1996, AR1997, AR1998, AR1999, AR2000, AR2001, AR2002, AR2003, AR2004, AR2005, AR2006, AR2007, AR2008, AR2009, AR2010, AR2011, AR2012, AR2013, AR2014, AR2015, AR2016, AR2017, AR2018,

Local Projects (Thurston County)



Thurston County Commissioner Tyne Messer, right, and Budda Councilor Steve Lyle observe a Flood Warning System during the Chehalis Basin Strategy Legislative Site Tour at the Stockmunchuck Dam on Friday, Sept. 27.

28

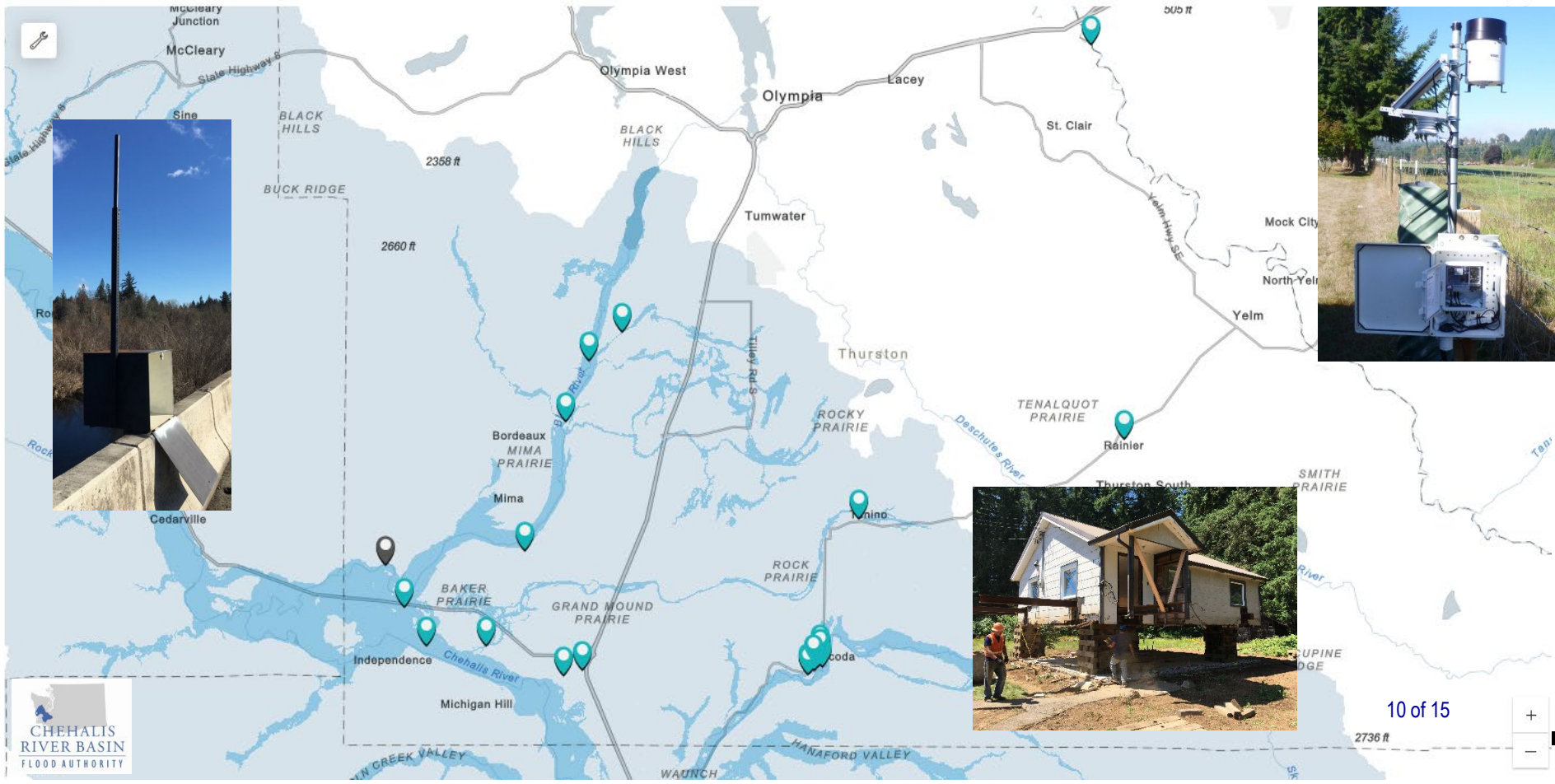
Selected Projects

508

Average Days to Project Completion

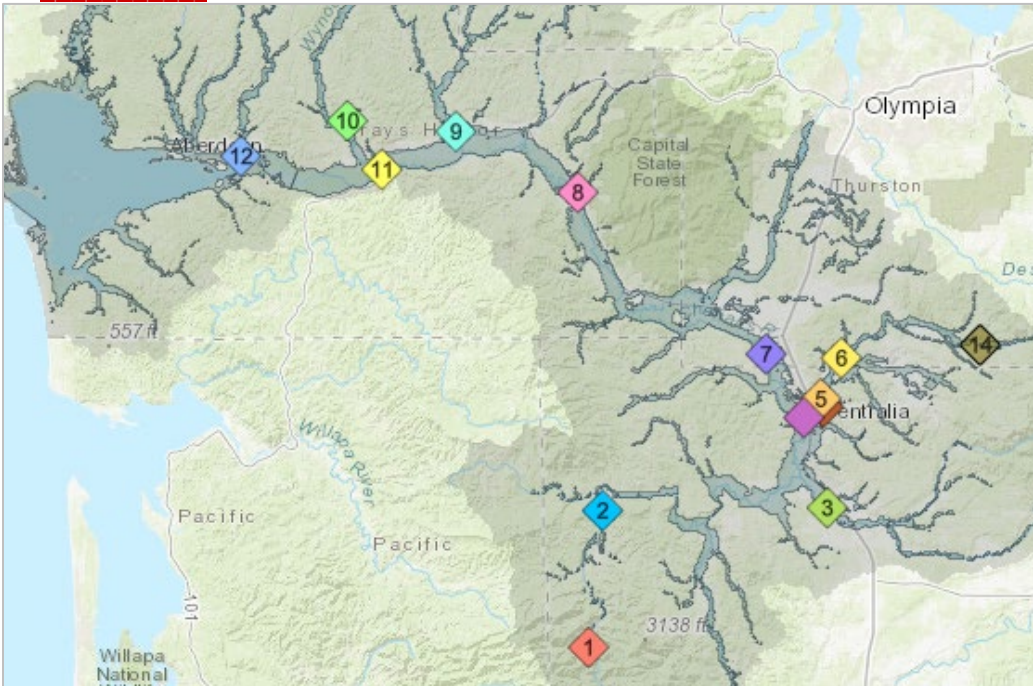
\$968.6K

Combined Cost

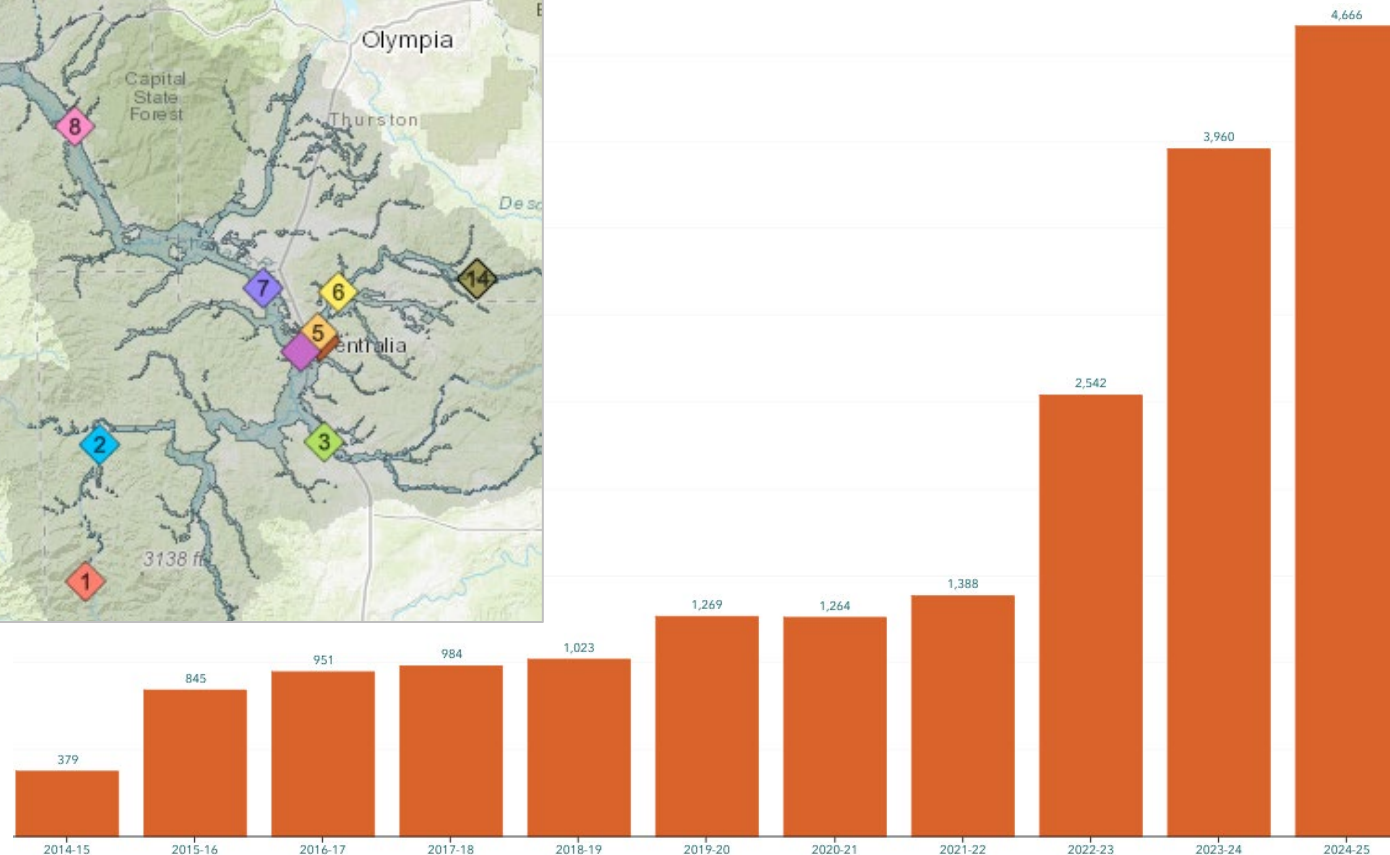


- ✓ **Developed** with State Capital Budget \$.
- ✓ **Maintained** with local \$.

Flood Warning System (Alert Sign-Ups)



Sign-up for email high water alerts [here](#).



Proposed Flow-Through Dam for Flood Control (#3)

1. Move through unobstructed
 - ✓ Water
 - ✓ Fish
 - ✓ Sediment
2. Delivers top-to-bottom benefit, Pe Ell to Cosmopolis.
3. See recent presentation [here](#).

www.chehalisriverbasinfczd.com

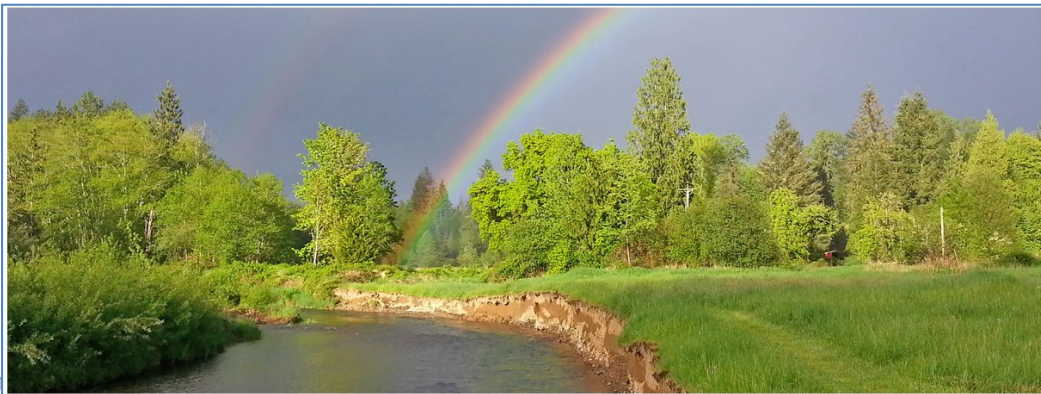
Chehalis Basin Strategy (Network of Partners)



Today vs 2007

Today, we are substantially more aware, better prepared for catastrophic flooding than ever before.

- ✓ We have a state-of-the art flood warning system.
- ✓ We've completed many cost-efficient local projects and habitat projects.
- ✓ We're serving people, local governments, emergency responders, agriculture, fish, and habitat alike
- ✓ We have a governance, administrative, and funding structure that's delivering results, and is committed to a balanced basin-wide flood and fish solution (see Local Resolution Library).



<https://chehalisbasinstrategy.com/office-of-chehalis-basin/>

Key Contacts

Vickie Raines, Grays Harbor County Representative

Chair, Chehalis River Basin Flood Authority

Flood Authority Appointee & Chair, Chehalis Basin Board

360/590-4100

vraines@graysharbor.us

Edna Fund, Lewis County Representative

Vice-Chair, Chehalis River Basin Flood Authority

Chair, Chehalis River Basin Flood Control Zone District Advisory Board

360/269-7515

dutch@localaccess.com

Wayne Fournier, Thurston County Representative

Member, Chehalis River Basin Flood Authority

360/968-4612

Wayne.Fournier@co.thurston.wa.us

Scott Boettcher

Staff, Chehalis River Basin Flood Authority

360/480-6600

scottb@sbgh-partners.com

Extra – Flood and Fish Articles

The Chronicle

Division of CP Publishing

<https://chronline.com/browse.html?>

Chehalis Basin Strategy progress in review: Pump station investments to protect 5,100 properties in lower Chehalis River Basin
Editor's Note: This article is part of an ongoing series highlighting projects that have been completed as part of the Chehalis Basin Strategy. These projects are implemented in cooperation ... more
By The Chronicle staff | 11/18/24

Chehalis Basin Strategy progress in review: Working together to restore nearly 5 miles of the lower Satsop River for salmon, steelhead and local communities
Editor's Note: This article is part of an ongoing series highlighting projects that have been completed as part of the Chehalis Basin Strategy. These projects are implemented in cooperation ... more
By The Chronicle staff | 8/23/24

Chehalis Basin Strategy progress in review: Bringing Stillman Creek back to life
More than 140 local fish and flood projects have been completed across the Chehalis River Basin, coordinated and funded through the Office of Chehalis Basin (OCB). The OCB board is ... more
By The Chronicle staff | 11/17/23

Chehalis Basin Strategy progress in review: Erosion management at Haul Road
More than 140 local fish and flood projects have been completed across the Chehalis River Basin, coordinated and funded through the Office of Chehalis Basin (OCB). The OCB board is ... more
By The Chronicle staff | 10/27/23

Chehalis Basin Strategy progress in review: Improving fish passage on Middle Fork Wildcat Creek in Grays Harbor County
More than 140 local fish and flood projects have been completed across the Chehalis River Basin, coordinated and funded through the Office of Chehalis Basin (OCB). The OCB board is ... more
By The Chronicle staff | 9/29/23

Chehalis Basin Strategy progress in review: Pump station paves way for economic revitalization, flood protection in Grays Harbor County
More than 140 local fish and flood projects have been completed across the Chehalis River Basin, coordinated and funded through the Office of Chehalis Basin (OCB). The OCB board is ... more
By The Chronicle staff | 8/15/23

Chehalis Basin Strategy progress in review: Log jacks protect wastewater treatment plant in Grays Harbor County
More than 140 local fish and flood projects have been completed across the Chehalis River Basin, coordinated and funded through the Office of Chehalis Basin (OCB). The OCB board is ... more
By The Chronicle staff | 8/25/23

Chehalis Basin Strategy progress in review: Chehalis-Centralia Airport pump station replacement
It has been more than 15 years since the devastating flooding of December 2007 in the Chehalis River Basin. In the time since, residents, businesses, tribes and government entities ... more
By The Chronicle staff | 8/4/23

The Chronicle

<https://www.chronline.com/stories/chehalis-basin-strategy-progress-in-review-pump-station-investm>

Chehalis Basin Strategy progress in review: Pump station investments to protect 5,100 properties in lower Chehalis River Basin



The Fry Creek Pump Station is pictured in Aberdeen.