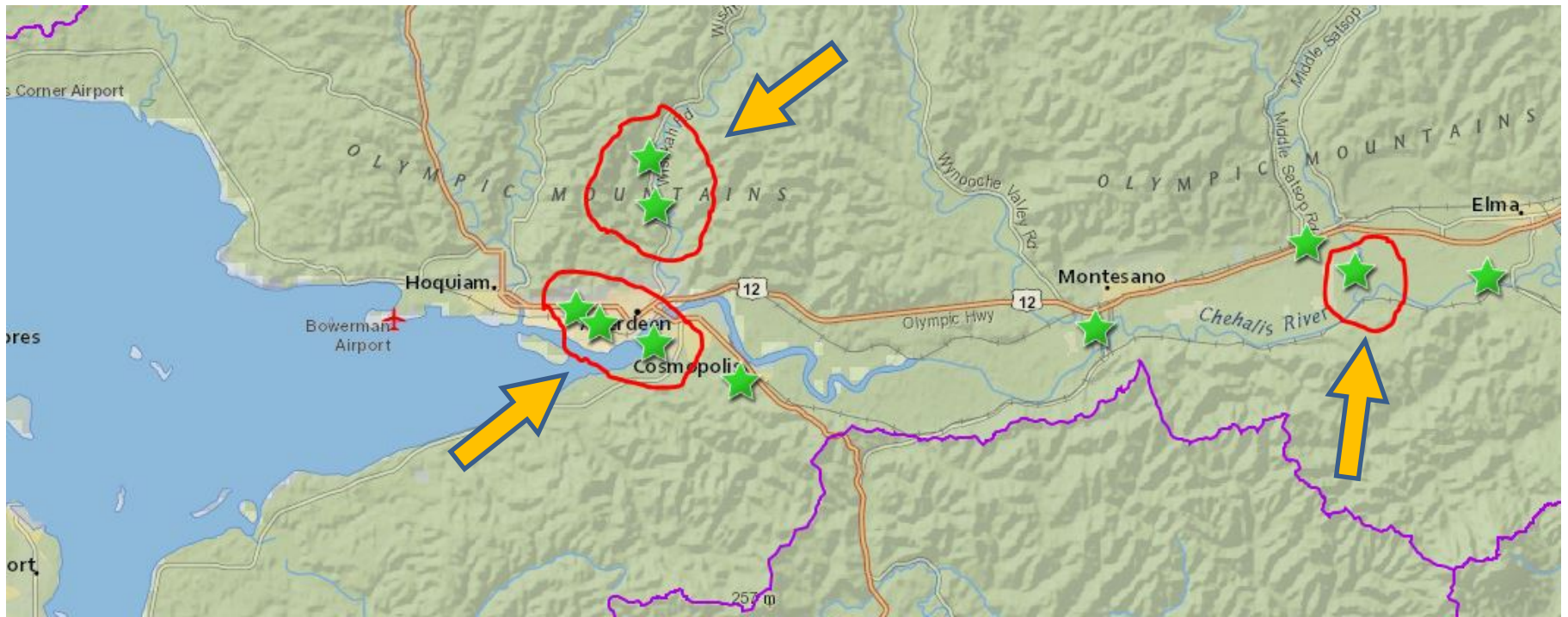


# PRESENTATION #6

## *Wishkah Road Comprehensive Flood Study (GHC)*



[www.ezview.wa.gov/graysharborfloodrelief](http://www.ezview.wa.gov/graysharborfloodrelief)

[www.ezview.wa.gov/site/alias\\_\\_1492/34489/local\\_projects.aspx](http://www.ezview.wa.gov/site/alias__1492/34489/local_projects.aspx)

# Wishkah Road Comprehensive Flood Study

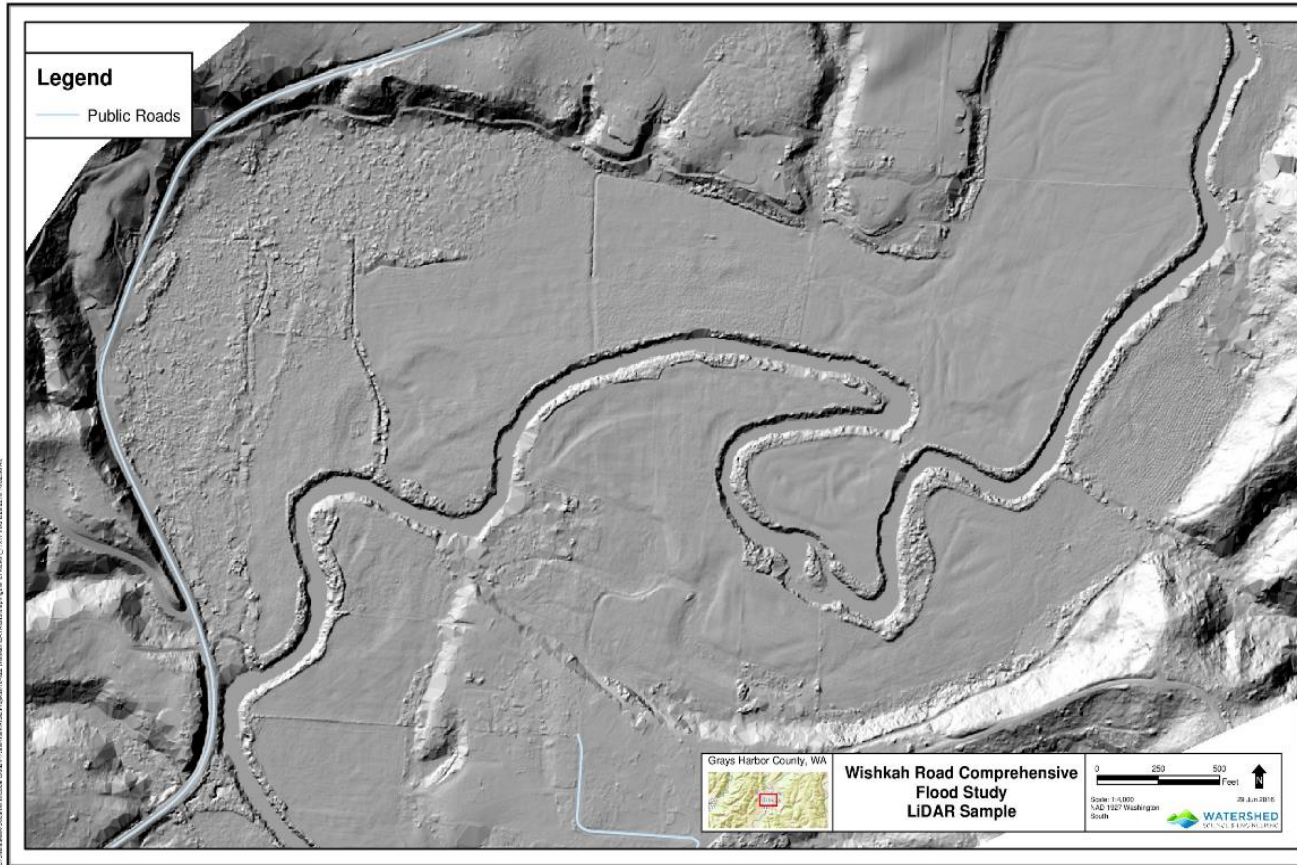
## *Project Description/Overview:*



## Study Purpose

- **Funded by Chehalis River Basin Flood Authority**
- **Reach Scale Assessment MP 2.2 to MP 7.6 (RM 2 to 10)**
- **Reduce or Eliminate Flooding**
- **Identify Cost Effective Solutions**
- **Separate from Floodwall project**

# Current Status:

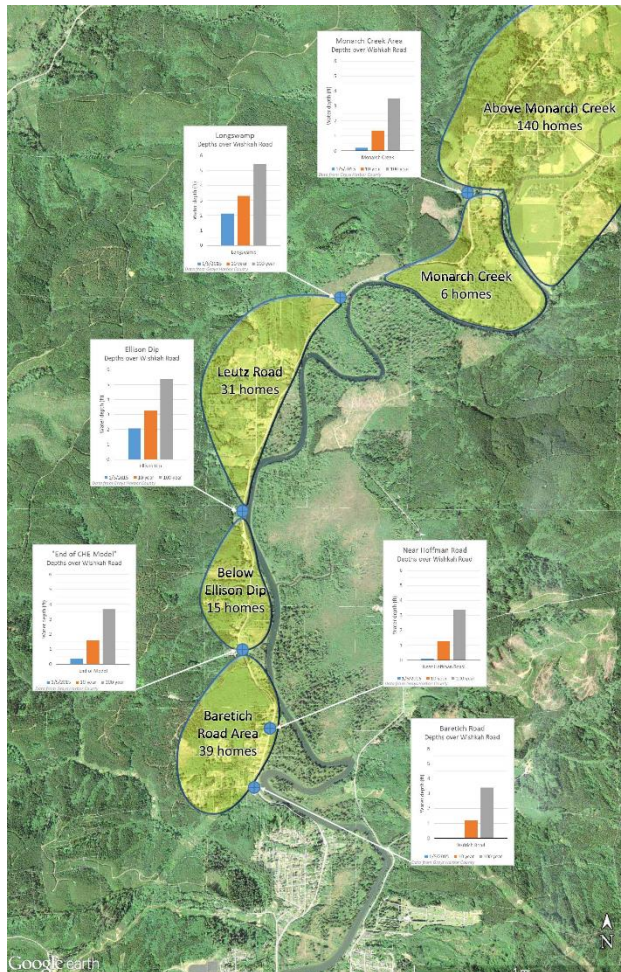


## Completed Elements

### • **Baseline Condition Assessment**

- ✓ Flooding History & Closures
- ✓ Topographic (LiDAR) Data
- ✓ Bathymetry (Channel Survey)
- ✓ Hydrologic Analysis
  - ✓ Wishkah River Flow
  - ✓ Tidal Water Levels
- ✓ Hydraulic Modeling of Existing Conditions
- ✓ Verify Model Results

# Upcoming Planned Activities:



## Phase 2

- **Alternatives Analysis**
  - Assess potential economic benefit
  - Define Flood Reduction Alternatives
  - Screen for Feasibility
  - Preliminary Designs
  - Additional Analysis
    - Hydraulic Modeling
    - Geotechnical
    - Other Considerations
  - Benefit/Cost Analysis
  - Preferred Alternative
  - Scope & Schedule for Final Design & Permitting



## *Controversies and/or Complexities:*

---

- **Some landowners believe there is more frequent flooding and/or deeper flooding than predicted by model & tidal data.**
  - Installing gage near Baretich Road to provide more accurate and verifiable data
- **Residents feel strongly that intangible benefits need to be included in evaluation of projects**
  - Quantifying non-economic impact of closures is difficult
    - Closure due to flooding could occur at same time as emergency services are required (or not)
    - Anxiety from temporary separation from families/school/work
- **Some feel that any remaining risk to public safety is unacceptable and projects need to be implemented regardless of economic considerations**
  - However, alternatives needs to be weighed against other high priority projects



## *Further Information:*

---

### **Lead Agency: Grays Harbor County Public Works**

Rob Wilson, County Engineer – 360 249-4222,  
[rwilson@co.grays-harbor.wa.us](mailto:rwilson@co.grays-harbor.wa.us)

### **Prime Consultant: Watershed Science & Engineering**

Larry Karpack – 206 521-3000, [larry@watershedse.com](mailto:larry@watershedse.com)  
Mark Indrebo – 206 521-3000, [mark@watershedse.com](mailto:mark@watershedse.com)