

# Flood Authority Local Flood Damage Reduction Projects

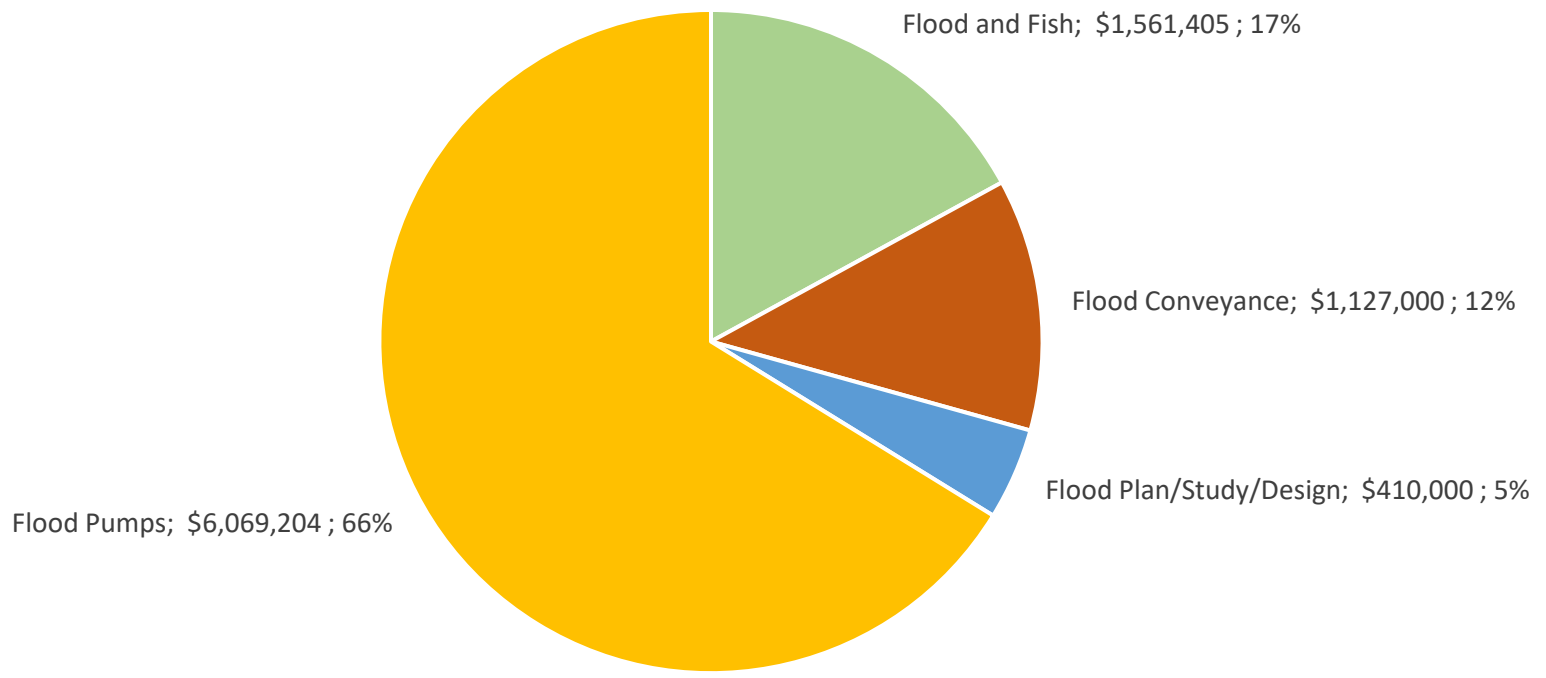
## Proposed 2021-23 Local Projects

November 5, 2020  
(Updated 12-02-2020)

Scott Boettcher, Staff  
Chehalis River Basin Flood Authority

# Projects Submitted

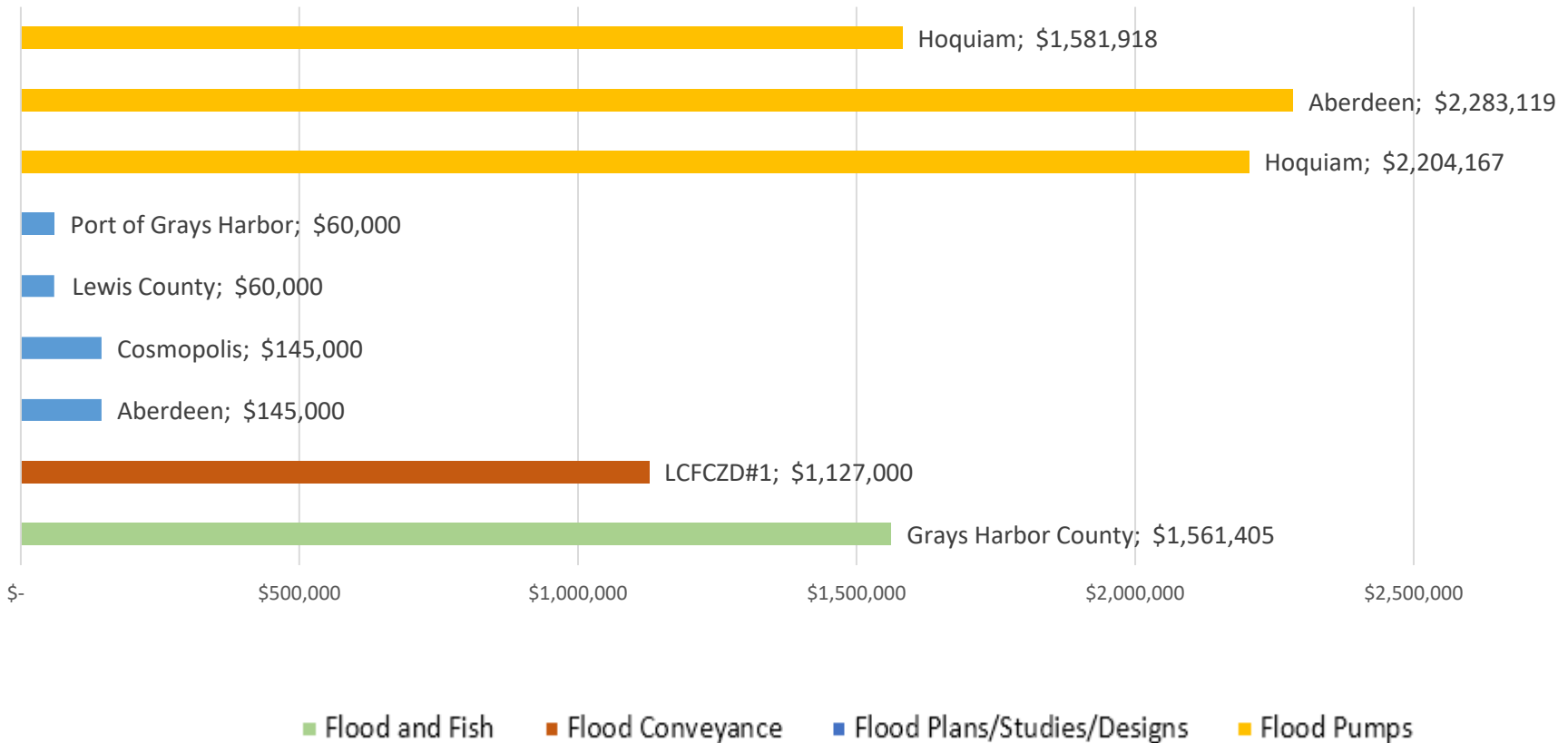
Project Types  
(total request = \$9,167,609)



■ Flood and Fish   ■ Flood Conveyance   ■ Flood Plan/Study/Design   ■ Flood Pumps



# Projects Submitted

## All Projects (total request = \$9,167,609)

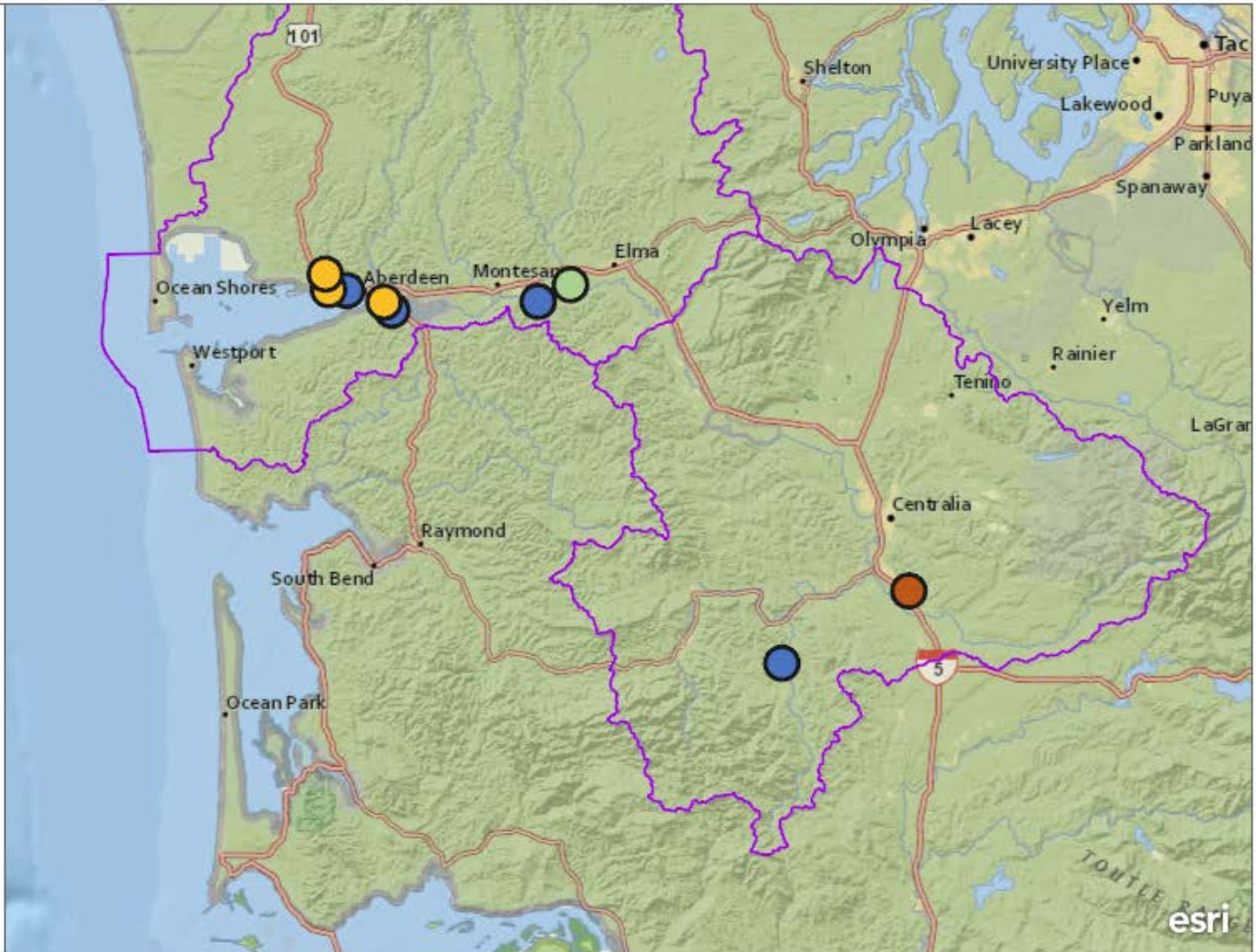


# Projects Submitted

All 2021-23 Local Project Proposals 11-03-2020

-  Flood Plans/Studies/Designs
-  Flood Pumps
-  Flood Conveyance
-  Flood and Fish

View interactive map  
<https://arcg.is/0rDTjr>





# Pump Projects

Total request = \$6,069,204



**Hoquiam -- 10th Street Pump Station**  
\$2,204,167

**Aberdeen -- Farragut Street Pump Station**  
\$2,283,119

**Hoquiam -- Queen Ave Pump Station**  
\$1,581,918

Project: Replaces 1960s era pump station.

Benefit:

- ✓ Significant pump station for SE Hoquiam (\$38,101,152 assessed value).
- ✓ Implements 2000 City Surface Water Plan and 2016 Timberworks Plan.
- ✓ Immediate benefit without NSL West Seg.
- ✓ At end of useful, maintenance-efficient life.

Doable: Yes (design, permit, construct).

Initial Ranking: 4



Project: Replaces 1980 pump station.

Benefit:

- ✓ Significant pump station that protects 400 South Aberdeen properties (\$37M).
- ✓ Coordinated with Cosmopolis 2021-23 Mill Creek Multi-Objective Plan to optimize discharge to lower Mill Creek basin.
- ✓ At end of useful, maintenance-efficient life.

Doable: Yes (design, permit, construct).

Initial Ranking: 5



Project: Replaces 1962 pump station.

Benefit:

- ✓ Significant pump station for SE Hoquiam (\$27,435,496 assessed value).
- ✓ Implements 2000 City Surface Water Plan and 2016 Timberworks Plan.
- ✓ Immediate benefit without NSL West Seg.
- ✓ At end of useful, maintenance-efficient life.

Doable: Yes (design, permit, construct).





Initial Ranking: 6



1. "Stormwater utility revenues do not (and will not) have the capacity for pump capital improvements." (Kris Koski)
2. "Reducing flood risk and lowering flood insurance is single most important effort for community, economic development." (Brian Shay)

# Plan, Study, Design Projects

Total request = \$410,000

<p>Aberdeen – Fry Creek Restoration &amp; Flood Reduction Phase IIIa Plan \$145,000</p>	<p>Cosmopolis – Mill Creek Multi-Objective Implementation Plan \$145,000</p>	<p>Lewis County – Lower Boistfort Valley Infrastructure Vulnerability Assessment \$60,000</p>	<p>Port of Grays Harbor – Satsop Business Park Chehalis River Bank Stabilization Study \$60,000</p>
<p><u>Project:</u> Plan to identify a preferred conceptual design for flood reduction within Sumner and Simpson Avenue corridor.</p> <p><u>Benefit:</u></p> <ul style="list-style-type: none"> <li>✓ Build on previous phases (I and II) and implement 2016 Timberworks Plan.</li> <li>✓ Daylight Fry Creek (now underground, constricted, flood prone, and not fish-friendly).</li> </ul> <p><u>Doable:</u> Yes</p> <p><u>Initial Ranking:</u> 2</p>  <p><small>Photo 3: Fry Creek with Simpson Avenue to the north</small></p>	<p><u>Project:</u> Plan to prioritize 4,500 feet of culvert improvements.</p> <p><u>Benefit:</u></p> <ul style="list-style-type: none"> <li>✓ Begins Phase II of Mill Creek Multi-Objective Plan. (Phase I was Mill Creek Dam, fish passage project.)</li> <li>✓ Partner project with WDFW (fish passage) and Aberdeen (pump station project) to protect 250 homes (800 residents).</li> </ul> <p><u>Doable:</u> Yes</p> <p><u>Initial Ranking:</u> 3</p> 	<p><u>Project:</u> Study to assess, prioritize infrastructure vulnerability.</p> <p><u>Benefit:</u></p> <ul style="list-style-type: none"> <li>✓ Reach-scale migration zone analysis (6-7 miles from South Fork Chehalis River at HWY 6 to Lost Valley Rd).</li> <li>✓ Prioritized actions/plans to protect road, utilities, well, emergency access in this significant rural area.</li> </ul> <p><u>Doable:</u> Yes</p> <p><u>Initial Ranking:</u> 8</p>  <p><small>South Fork Chehalis River Encroaching on Saw Faw Grange Well</small></p>	<p><u>Project:</u> Study to identify preferred protection approach for Port’s jeopardized haul road.</p> <p><u>Benefit:</u></p> <ul style="list-style-type: none"> <li>✓ Road is essential maintenance access to industrial water well.</li> <li>✓ Opportunity for fish-friendly, maintenance-friendly solution.</li> </ul> <p><u>Doable:</u> Yes</p> <p><u>Initial Ranking:</u> 9</p> 

# Flood Conveyance Project

Total request = \$1,127,000

Lewis County Flood Control District #1 -- Chehalis Industrial Park Flood Conveyance, Evacuation Project  
\$1,127,000

**Project:** Improve conveyance, evacuation of Chehalis Industrial Park flood waters to Dillenbaugh and Berwick creeks .

**Benefit:**

- ✓ Reduce flood impacts and down time costs to Industrial Park businesses.
  - 12/19-21/2019 flood event = \$1,150,000 impact/loss to Cascade Hardwoods, Sound Wood Products, Shelton Structures, Lewis County.
- ✓ Improve emergency response by reducing road and parking lot closures and flooding of local residences.

**Doable:** Yes\*\*

**Initial Ranking:** 7

**\*\*Note:** Working to modify project scope to (1) address immediate priority flood impact needs, and (2) assess larger drainage system with County, City, and other partners and set/sequence future investment priorities.





# Flood and Fish Project

Total request = \$1,561,405

Grays Harbor County -- Lower Satsop Restoration & Protection Program,  
Phase II (Habitat Connectivity and Reach-Scale Aquatic, Riparian and Floodplain Restoration)  
\$1,561,405

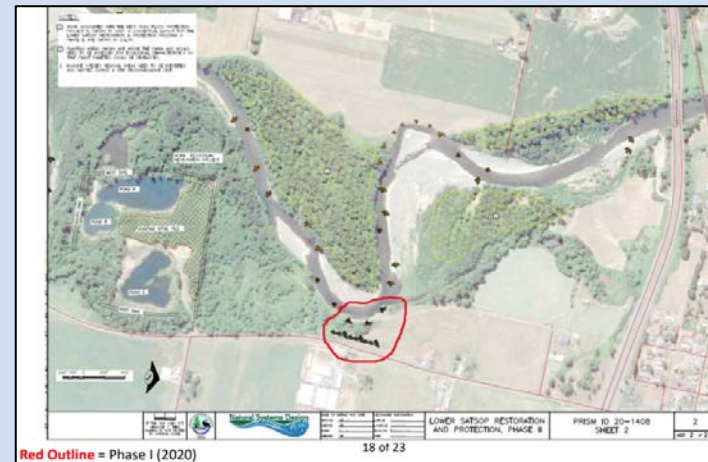
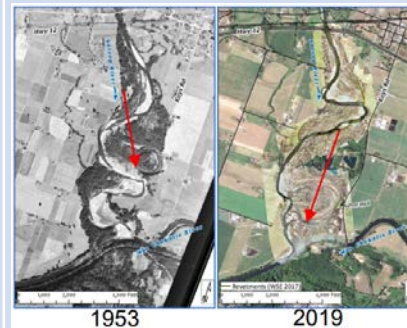
**Project:** Construct Phase II [Lower Satsop Restoration and Protection Program](#) to protect farmland, essential infrastructure and restore river/floodplain functions, habitat.

**Benefit:**

- ✓ Phase II (construction Summer 2022) -- flood relief through further river stabilization, erosion reduction, habitat restoration/enhancement.
  - ~35 in-channel structures.
  - ~130 acres riparian planting.
  - ~10 acres invasive species control.
  
- ✓ Phase I (completed Summer 2020) -- flood relief through river stabilization, erosion reduction, and reestablishing river access to its floodplain (construction areas - A, B, C).
  - 42 in-channel structures.
  - Rock revetment removal.
  - Post-construction Drone footage ([here](#) and [here](#))

**Doable:** Yes

**Initial Ranking:** 1





# Next Steps

- ✓ Continue to refine costs.
- ✓ Continue to refine scopes of work focused on do-ability/implementability.
- ✓ Develop investment options (low, medium, high) based on rankings, geography, project types, fund sources etc.
- ✓ Review projects against Chehalis Basin priorities (ASRP ecoregions, Local Actions Program measurable outcomes, CFAR, etc.).
- ✓ Seek Flood Authority approval 11-19-2020.
- ✓ Seek Chehalis Basin Board approval 12-05-2020.
- ✓ Continue to identify local project needs beyond 2021-23.

# Thank You / Questions

Scott Boettcher, Staff  
Chehalis River Basin Flood Authority  
360/480-6600  
[scottb@sbgh-partners.com](mailto:scottb@sbgh-partners.com)

