



CHEHALIS BASIN STRATEGY

Presented by Sam Imperati, **ICM**resolutions
CBB Facilitator

June 2023 **Draft**

Draft



Developing the CBB Long-Term Integrated Strategy: Process Questions



Topics

- 1) Reminder: Substantive Issues and Legis. Report
- 2) Key Process Questions
- 3) Target Date for These Process Decisions

**Cómo funciona los
Trending Topics
de Twitter**

REMINDER: Upcoming Key Substantive Issues

- **LAND, FRE, and ASRP:** What are the next steps?
- **Skookumchuck Dam:** What are the next steps?
- **North Shore Levee, CFAR, Local Projects, Erosion Management, Floodplain Acquisition:** What are the next steps, and what elements should be included in every package for further analysis?
- **Climate Change/Modeling:** Does the Board want to update the projections for the basin with the new climate information that will be coming out in 2023? Need out-year and planning horizon date(s).
- **Benefit/Cost Analyses:** What does the benefit-cost work look like? Socioeconomic/EJ? Evaluation of just the LAND and FRE? Relative costs and flood benefits, or also modeled impacts to aquatic habitat/species?

REMINDER: Draft Legis. Report: Phases Two & Three

Phased Implementation of the Chehalis Basin Strategy



What are the Upcoming Key Process Questions?



- 1) Integrated L-T Strategy Delivery Date?
- 2) What specifically will be compared?
- 3) What level of detail and information certainty is needed?
- 4) What comparative analysis tool will be used and how?
- 5) What is the target date for these process decisions?

1) Integrated L-T Strategy Delivery Date?

EIS Track?

- 1) Before SEPA EIS:
- 2) SEPA EIS: 2nd 25
- 3) NEPA EIS: 1st 26
- 4) Post Consultation: 3rd 26
- 5) NEPA ROD: 1st 27
- 6) As Long as it Takes

Budget Track?

- 1) OCT 24 Budget
- 2) JUN 25 End of BIEN.
- 3) OCT 25 Supp
- 4) OCT 26 Budget
- 5) Subsequent Biennium
- 6) As Long as it Takes

Other Tracks?

Conceptual Timeline

5-14-23

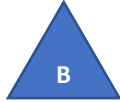
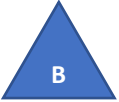
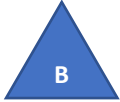
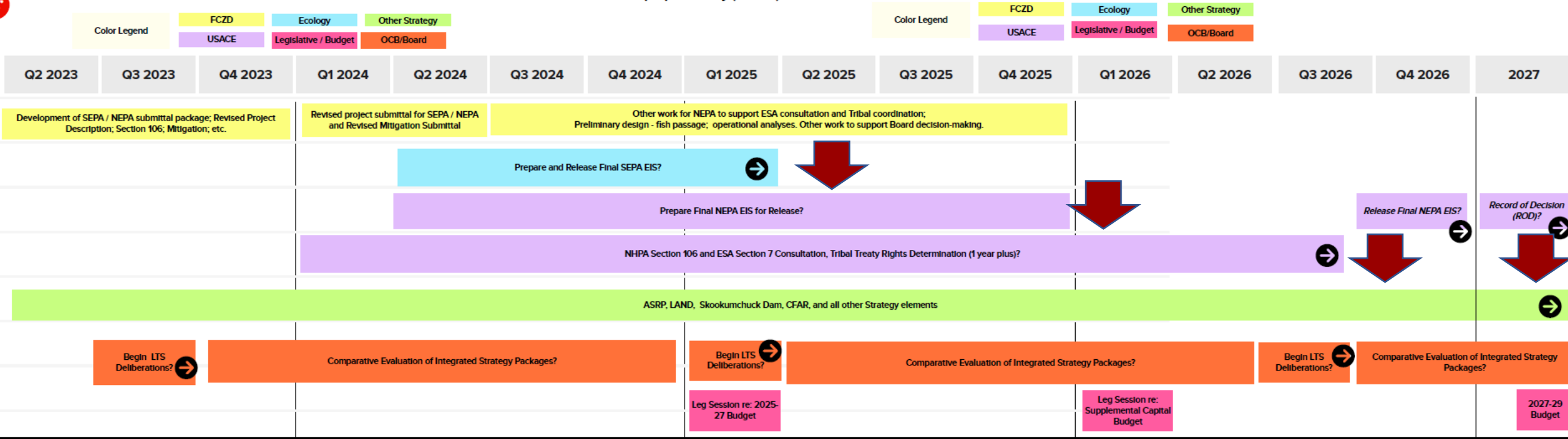


DRAFT

DRAFT

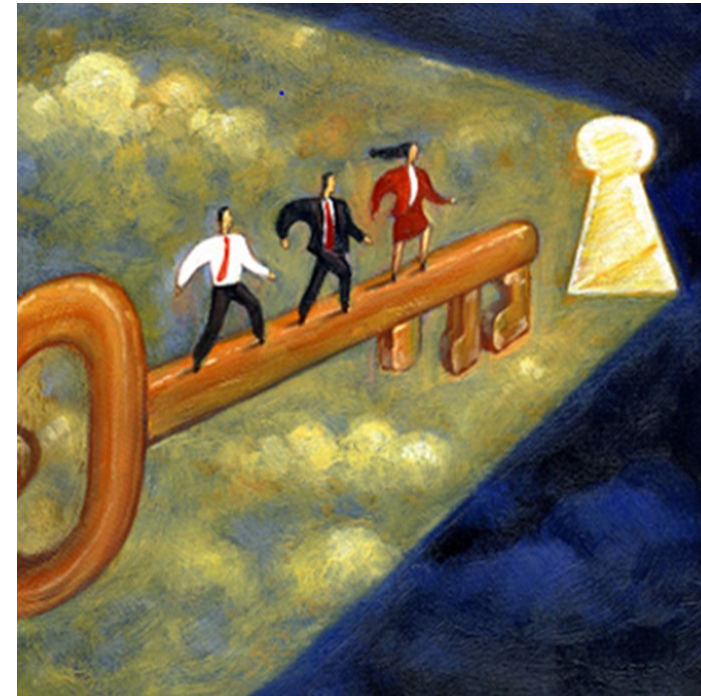
Conceptual Draft Schedule meant for discussion purposes only (5/8/23)

We are here



Delivery Date Possibilities in Chrono Order

- 1) OCT 24 Budget
- 2) End of Biennium: 2nd 25
- 3) SEPA EIS: 2nd 25
- 4) OCT 25 Supp
- 5) NEPA EIS: 1st 26
- 6) Post Consult: 3rd 26
- 7) OCT 26 Budget
- 8) After NEPA ROD 1st 27
- 9) Subsequent Biennium
- 10) As Long as it Takes



What are the advantages and disadvantages of each?

2) What Specifically will be Compared?



“I know it’s not an elephant, but we still need to talk about it.”

- A) Stay the Course:** Silo Approach with data and policy information provided separately
- B) Comparative Analyses:** Are we simply doing FRE vs LAND, or are we doing packages that include a combination of flood, fish, and dual-purpose actions?

What are the advantages and disadvantages of each?

3) What Level of Detail and Info Certainty is Needed?

- A) Less than EIS
- B) Same as EIS
- C) More than EIS
- D) Other



What are the advantages and disadvantages of each?

4) What Comparative Analysis Tool will be Used and How?

- 1) At most, we would **be teeing up** alternatives for comparison, **not picking one**.
- 2) Facilitator creates draft exercises for Board to create **potential packages for the decision table**.
- 3) Facilitator, in **consultation with staff and consultants, refine decision tool exercises** with broad descriptions, ranges (e.g. Low-Medium-High) of actions, and a list of potential common elements.
- 4) **Board does preliminary scoping exercises** at a regular meeting with aggravated results to staff and consultants to further refine with additional needed data.
- 5) Information presented to Board at **retreat/charette in order to create 2 - 3 packages for comparative evaluation**.
- 6) Conduct **comparative analysis with benefit-cost work** in partnership with a **CBB subcommittee**. This will require decisions on out-years and planning horizons.
- 7) **Preliminary Results to Board for analysis and next steps**

5) What is the Target Date for these Process Decisions?

- A) June
- B) July
- C) Other

What are the advantages and disadvantages of each?



THANK YOU!

