

An aerial rendering of a river basin. In the foreground, a large steel truss bridge spans across a river. In the background, a town with several buildings and a parking lot is visible, surrounded by green trees and fields. The text 'Chehalis Basin' is written in large white letters, with 'LAND' below it in a large white outline font. A small asterisk is located at the top right of the 'D' in 'LAND'.

# Chehalis Basin

# LAND\*

**\* LOCAL ACTIONS NON-DAM ALTERNATIVE**

# THE “NON-DAM” ALTERNATIVE PLANNING PROCESS



**1.**  
Determine the target level of protection



**2.**  
Determine the mix of structural and nonstructural interventions, i.e., new infrastructure, flood proofing, etc.



**3.**  
Determine how much can be achieved through floodplain restoration



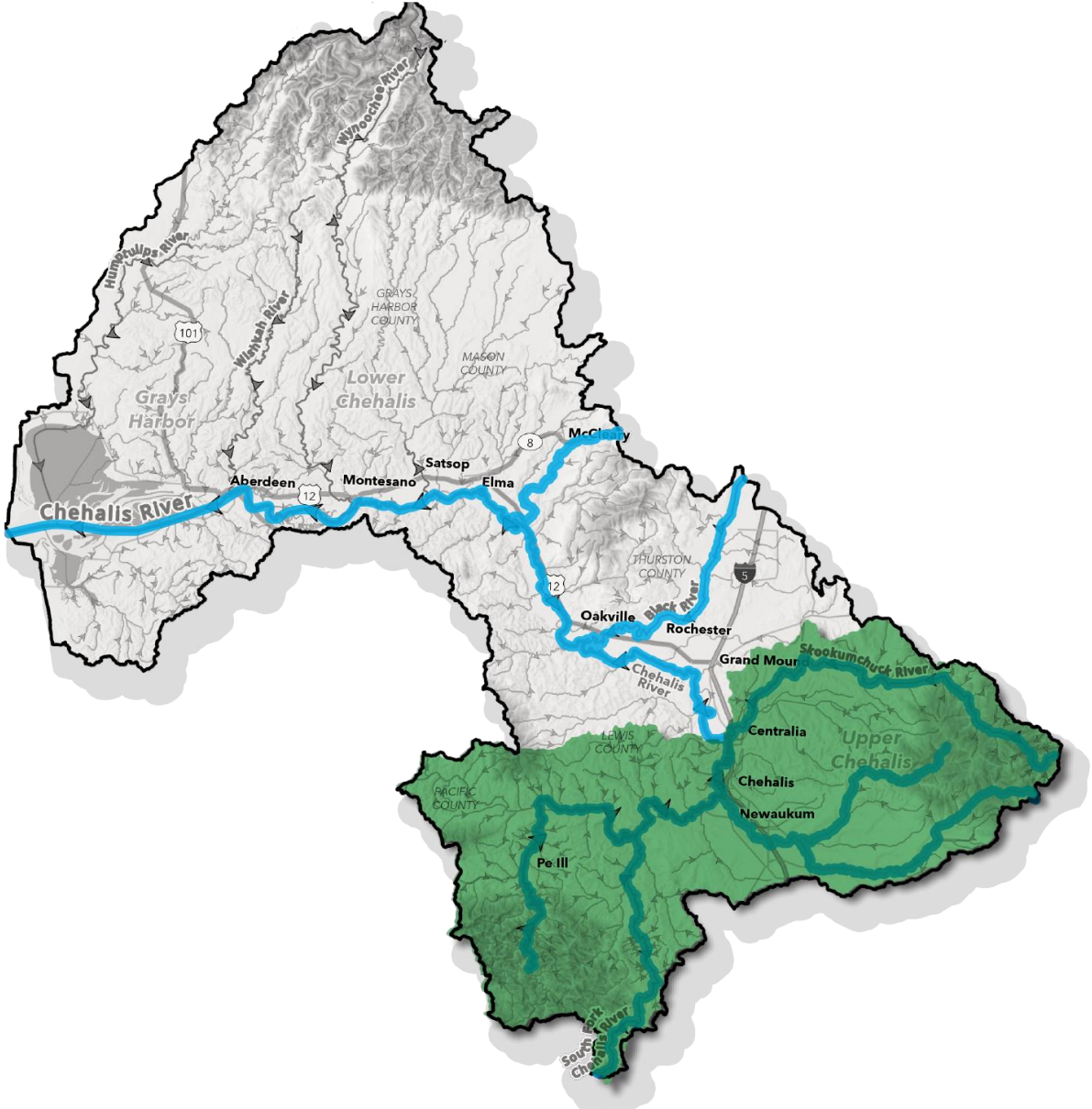
**4.**  
Identify future economic development opportunities



**5.**  
Identify potential funding and project delivery methods

# PROJECT AREA

## The Chehalis River Watershed



# PROJECT AREA

While focusing attention on the upper Chehalis Basin as directed by the Board, the Steering Group found it essential to account for impacts across the entire Basin.



# CHEHALIS BASIN TODAY

CENTRALIA



CHEHALIS RIVER

Chehalis-Centralia  
Airport

CHEHALIS

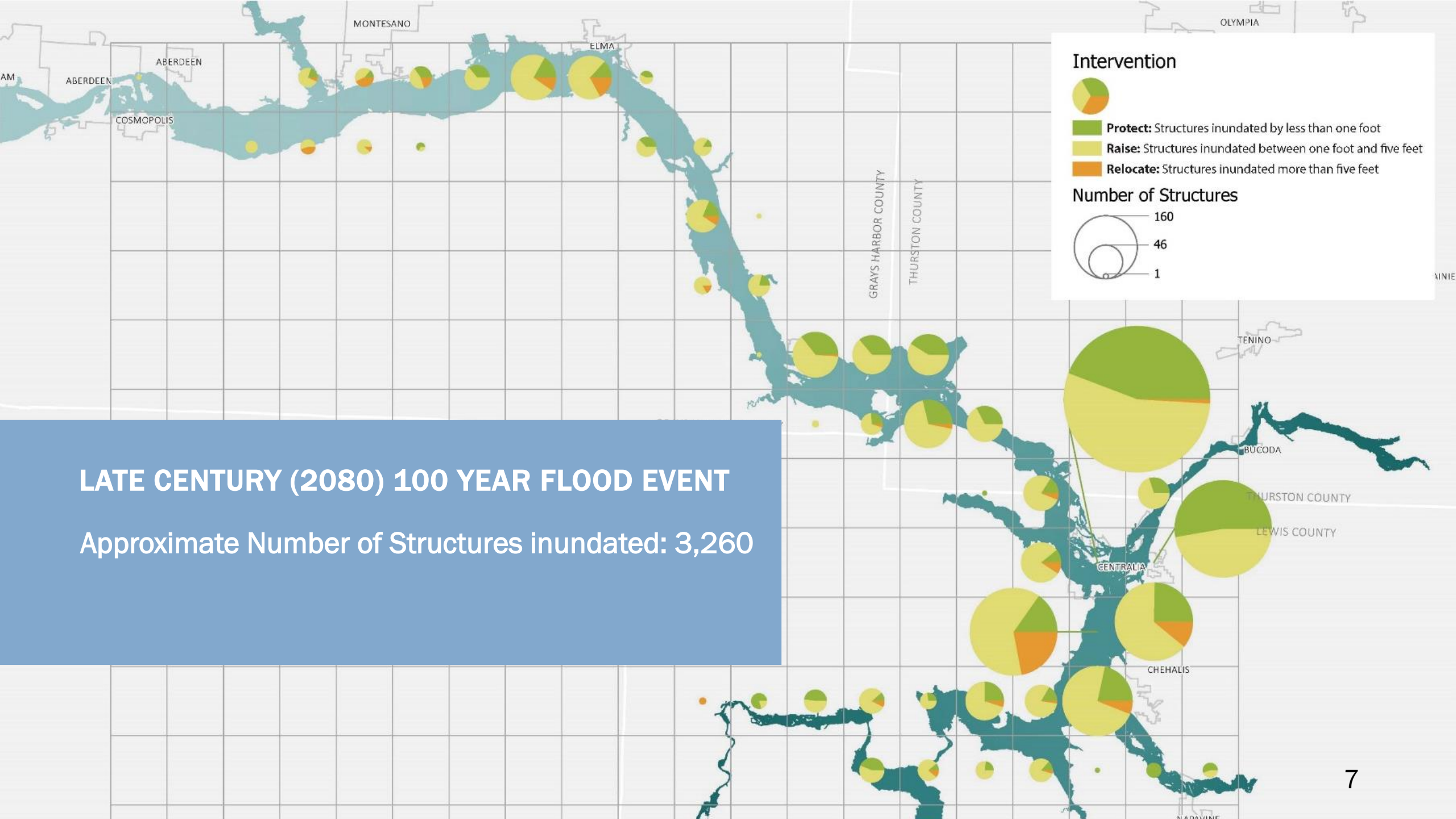
NEWAUKUM RIVER

City Limits



# LATE CENTURY 2080 100 YEAR FLOOD EXTENT





# LATE CENTURY (2080) 100 YEAR FLOOD EVENT

Approximate Number of Structures inundated: 3,260



# RECOMMENDED PRELIMINARY LAND ALTERNATIVE

Chehalis Basin  
LAND



# THE LAND ALTERNATIVE CONSISTS OF THREE ELEMENTS:

## PROJECTS

- PJ1:** Critical Roads and Bridges
- PJ2:** Levees and Floodwalls
- PJ3:** Improved Channel Conveyance
- PJ4:** Channel Diversion
- PJ5:** China Creek Daylighting

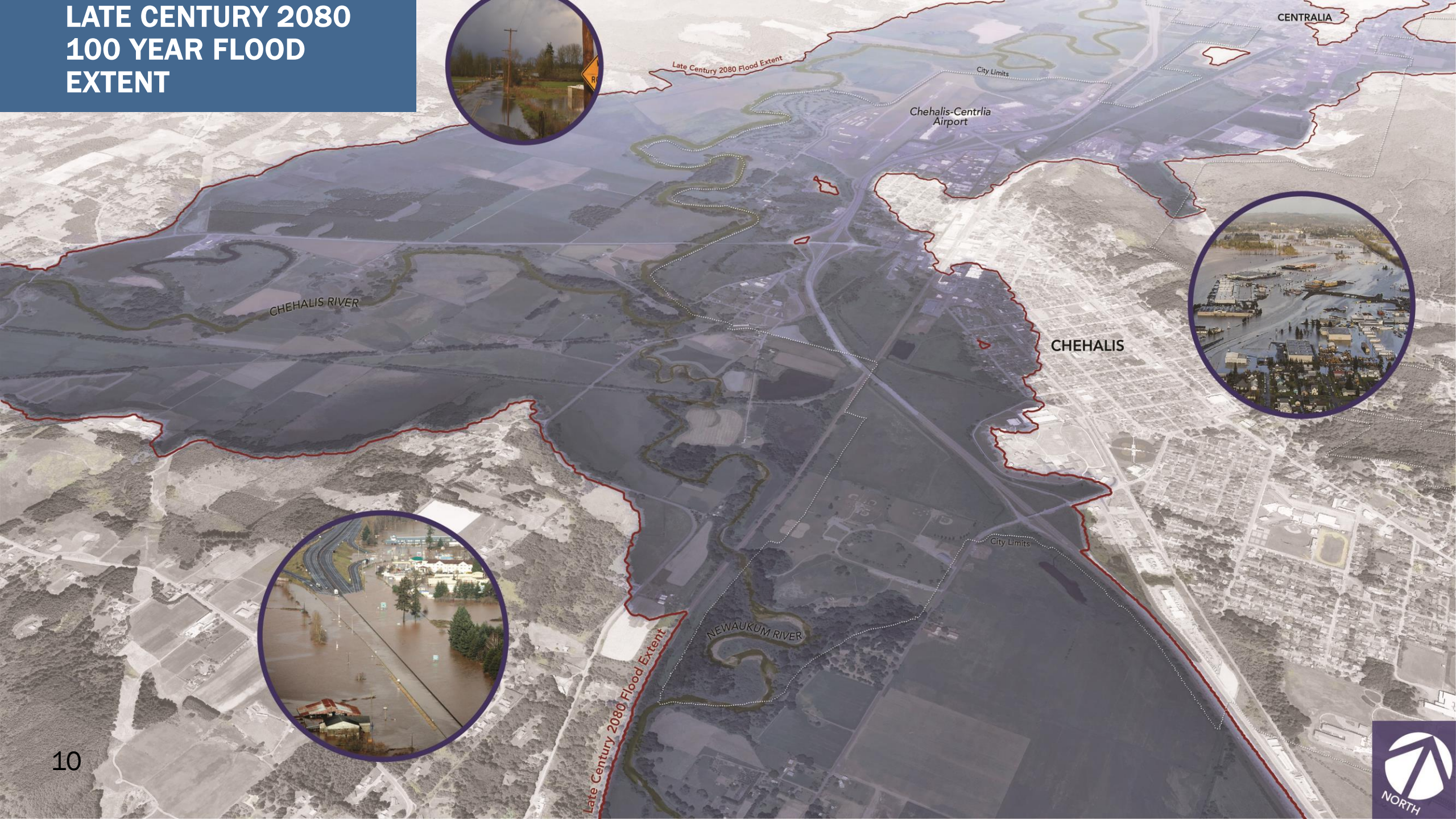
## PROGRAMS

- PG1:** Safe Structures
- PG2:** Community Resiliency
- PG3:** ASRP/LAND Alignment
- PG4:** Equity Set Aside
- PG5:** Floodplain Restoration

## POLICIES

- PL1:** Economic Development, Land Use, and Growth Management
- PL2:** Building and Development Codes
- PL3:** Capital Facilities
- PL4:** Funding

# LATE CENTURY 2080 100 YEAR FLOOD EXTENT



# PRELIMINARY LAND ALTERNATIVE



Focus on areas where there is a basin-wide benefit



New or expanded floodwalls and floodgates



Levees to protect existing development



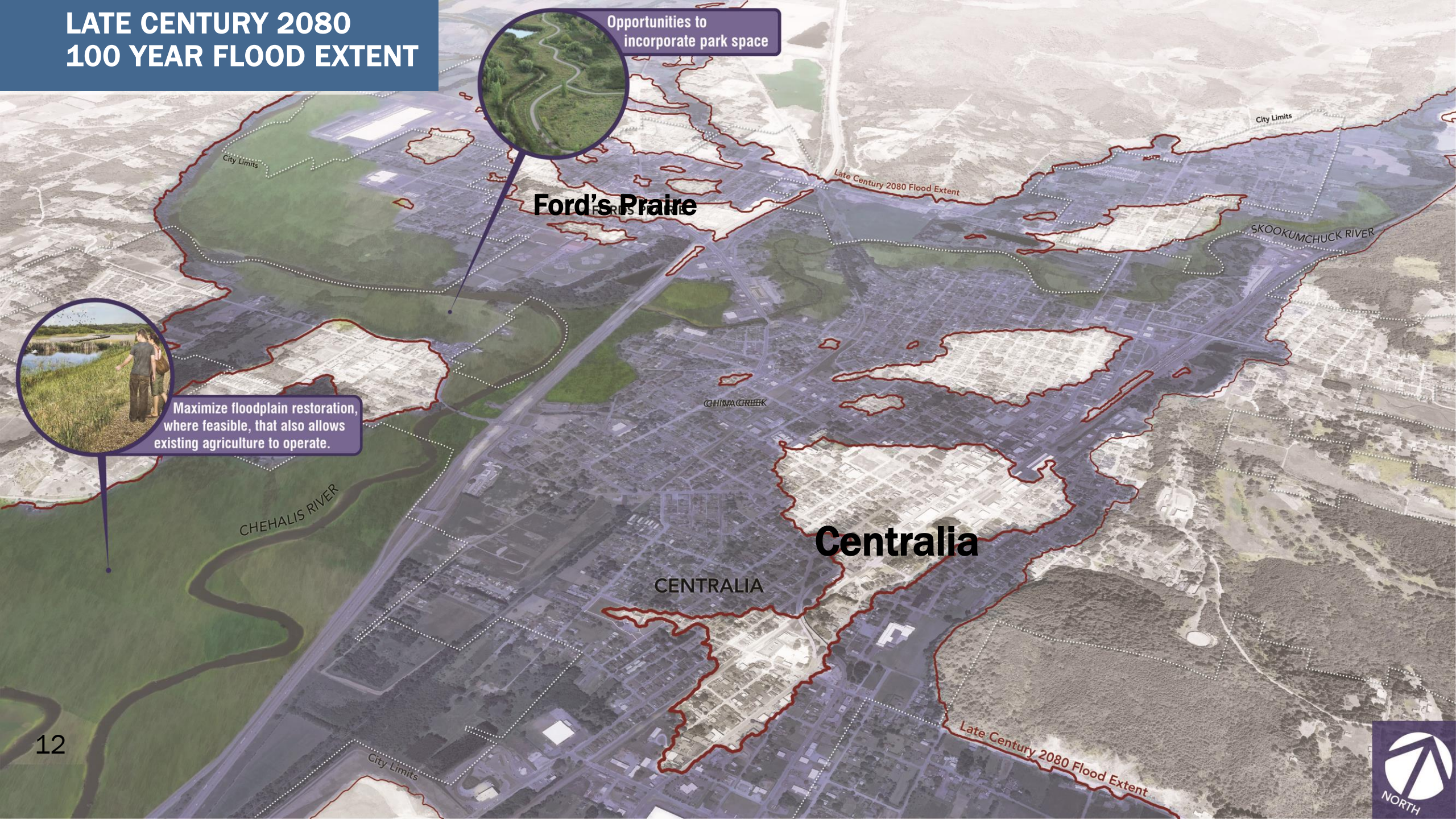
# LATE CENTURY 2080 100 YEAR FLOOD EXTENT



Opportunities to incorporate park space



Maximize floodplain restoration, where feasible, that also allows existing agriculture to operate.



# PRELIMINARY LAND ALTERNATIVE



Increase conveyance through grading and restoration

Construct a diversion to increase waterflow through the area

Floodwalls and flood gates along the Chehalis

Daylight China Creek to reduce flooding and spur economic development

