



LOWER SATSOP RESTORATION & PROTECTION PROGRAM

Protect, Preserve, Restore

* Farmland * Essential Infrastructure * River/Floodplain Functions & Habitat

December 16, 2019



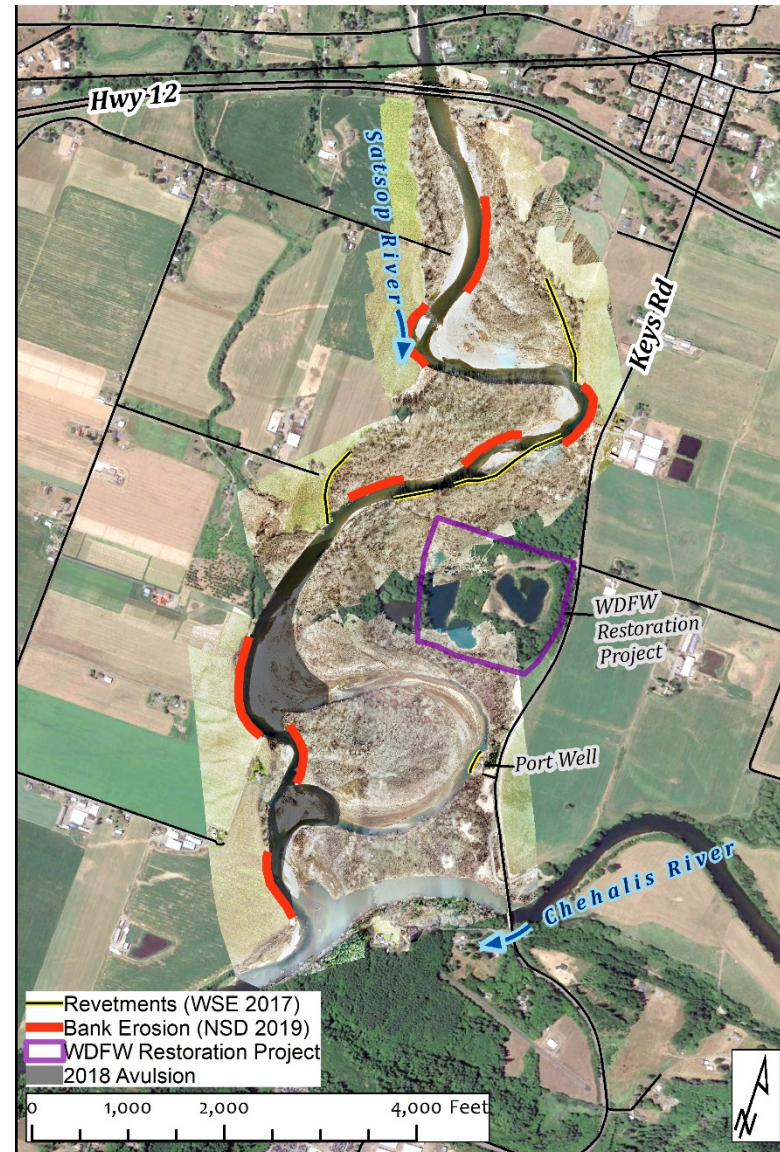
Grays Harbor
Conservation
District

your window to healthy lands

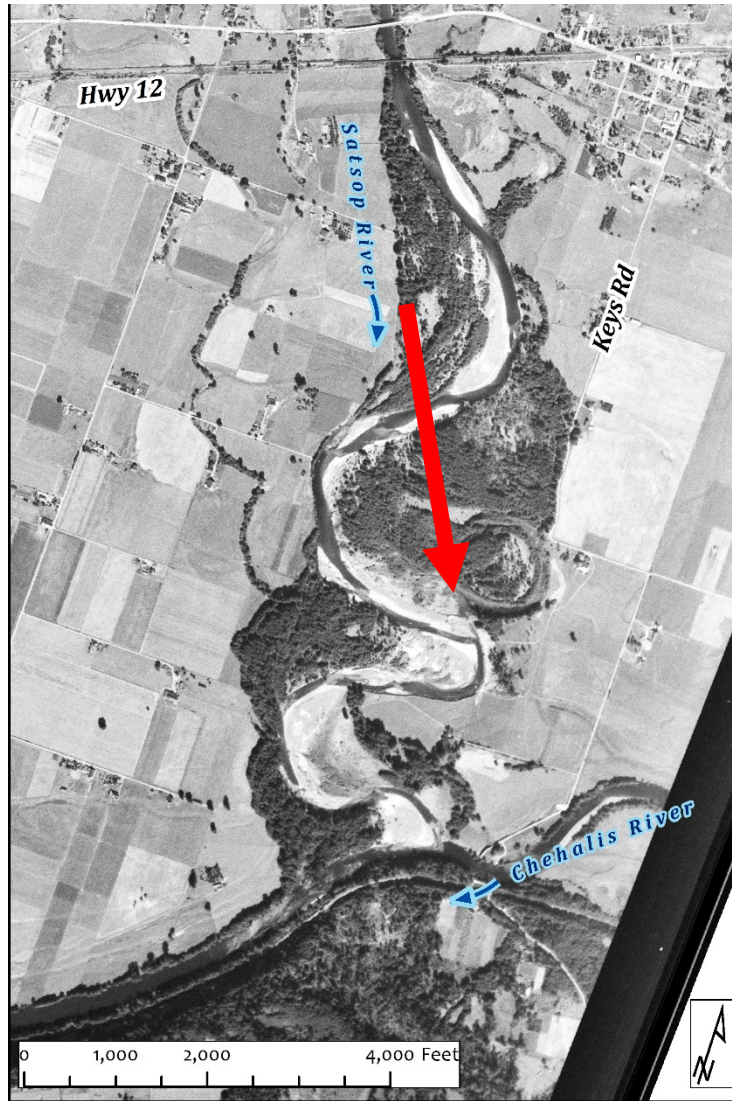


Issues

- Bank Erosion
- Revetments
- Keys Road
- Port Well
- WDFW Restoration Project
- 2018 Avulsion
- Community Frustration

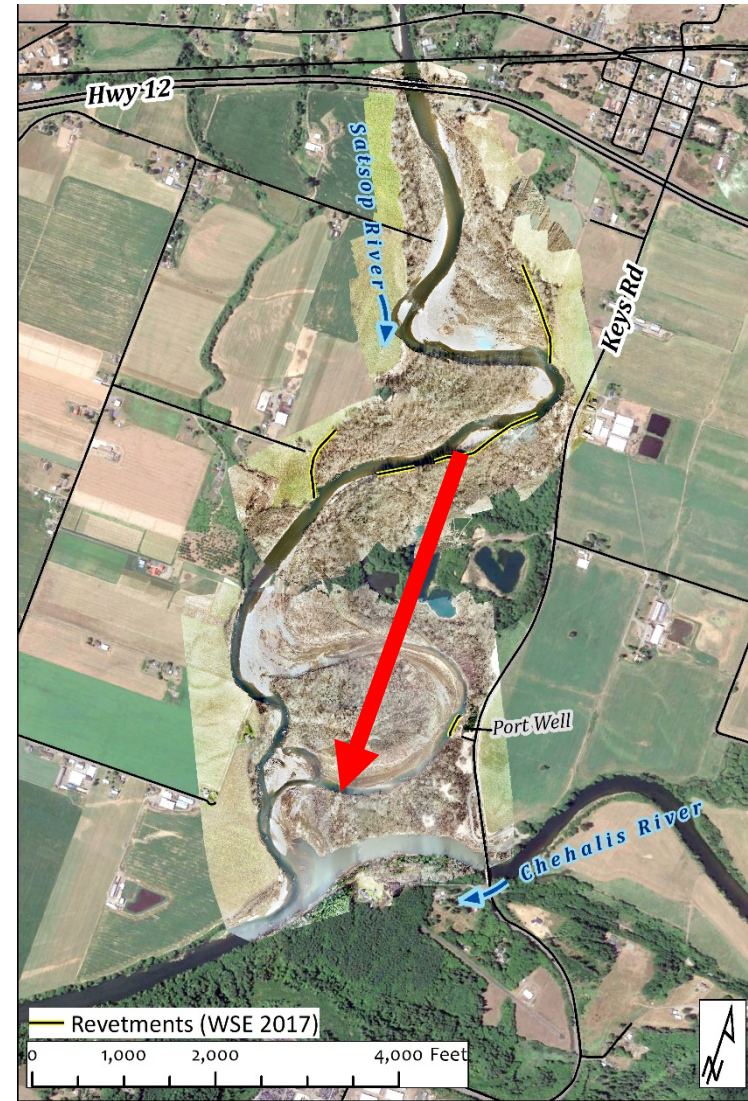


Historical Context



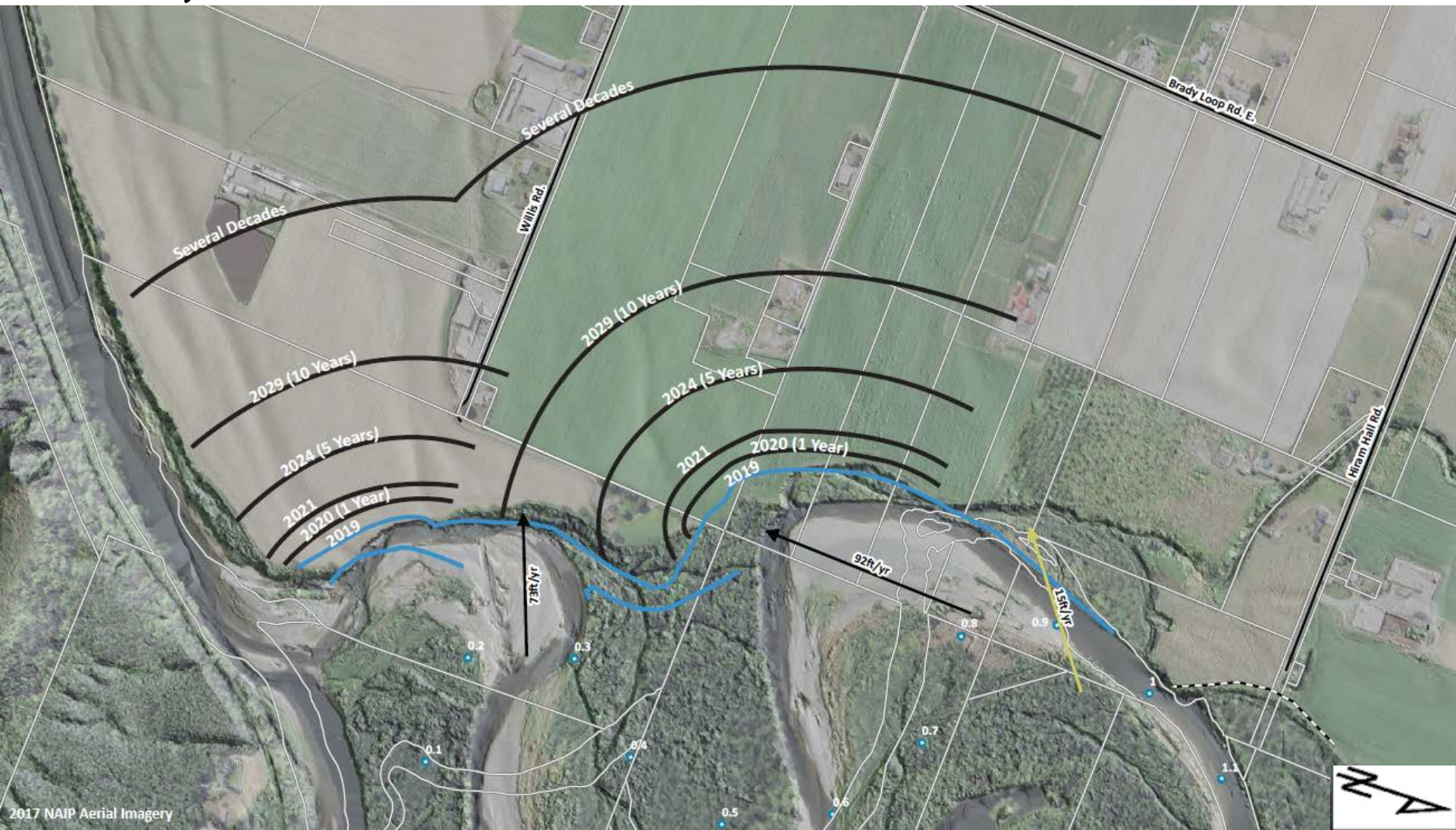
2

1953



2019

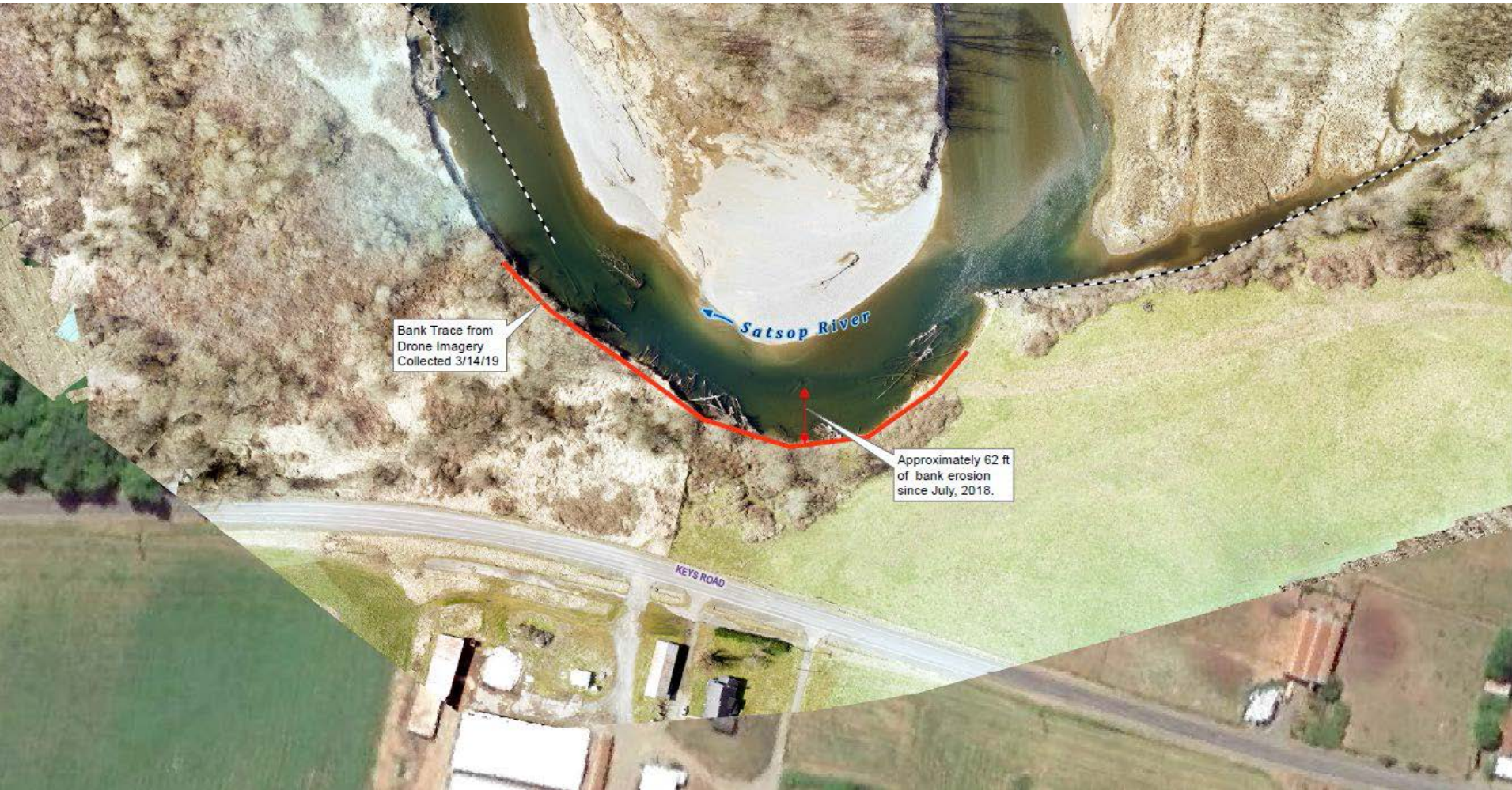
Projected Erosion Without Treatment



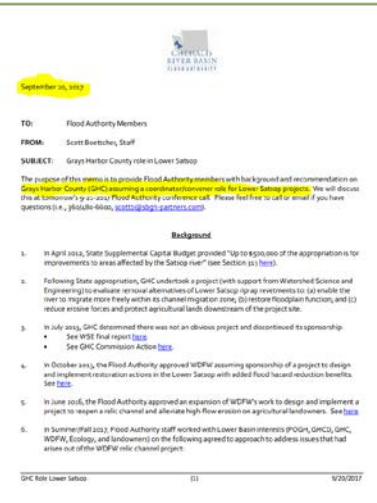
Highly Erodible Agricultural Soils



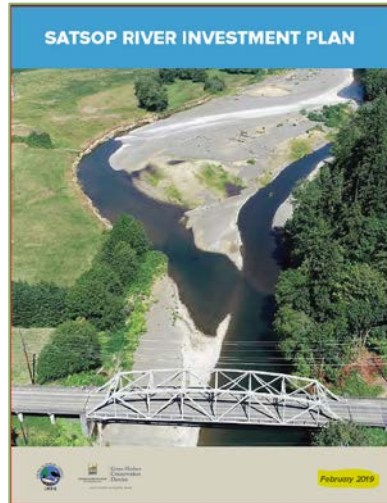
Essential Infrastructure Threatened (e.g., Keys Rd.)



Lower Satsop Restoration & Protection Program



“Organizing Stage”
9/2017 -- See [here](#)



“Visioning Stage”
4/2018 to 2/2019 -- See [here](#)

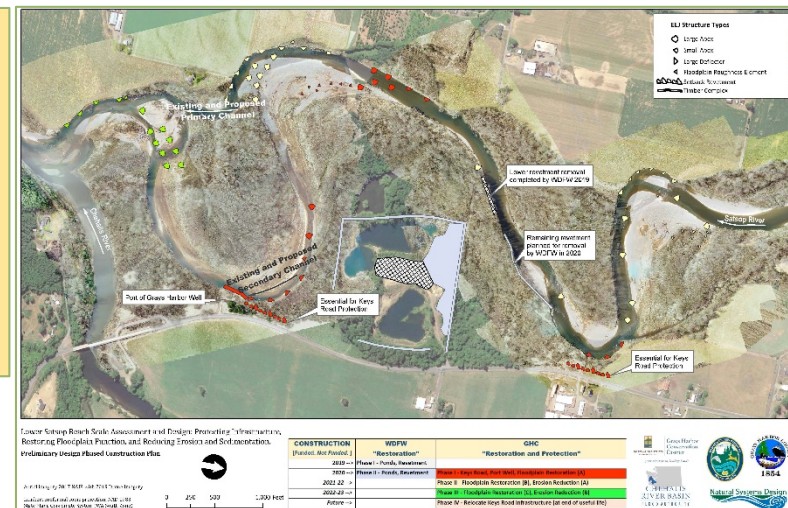


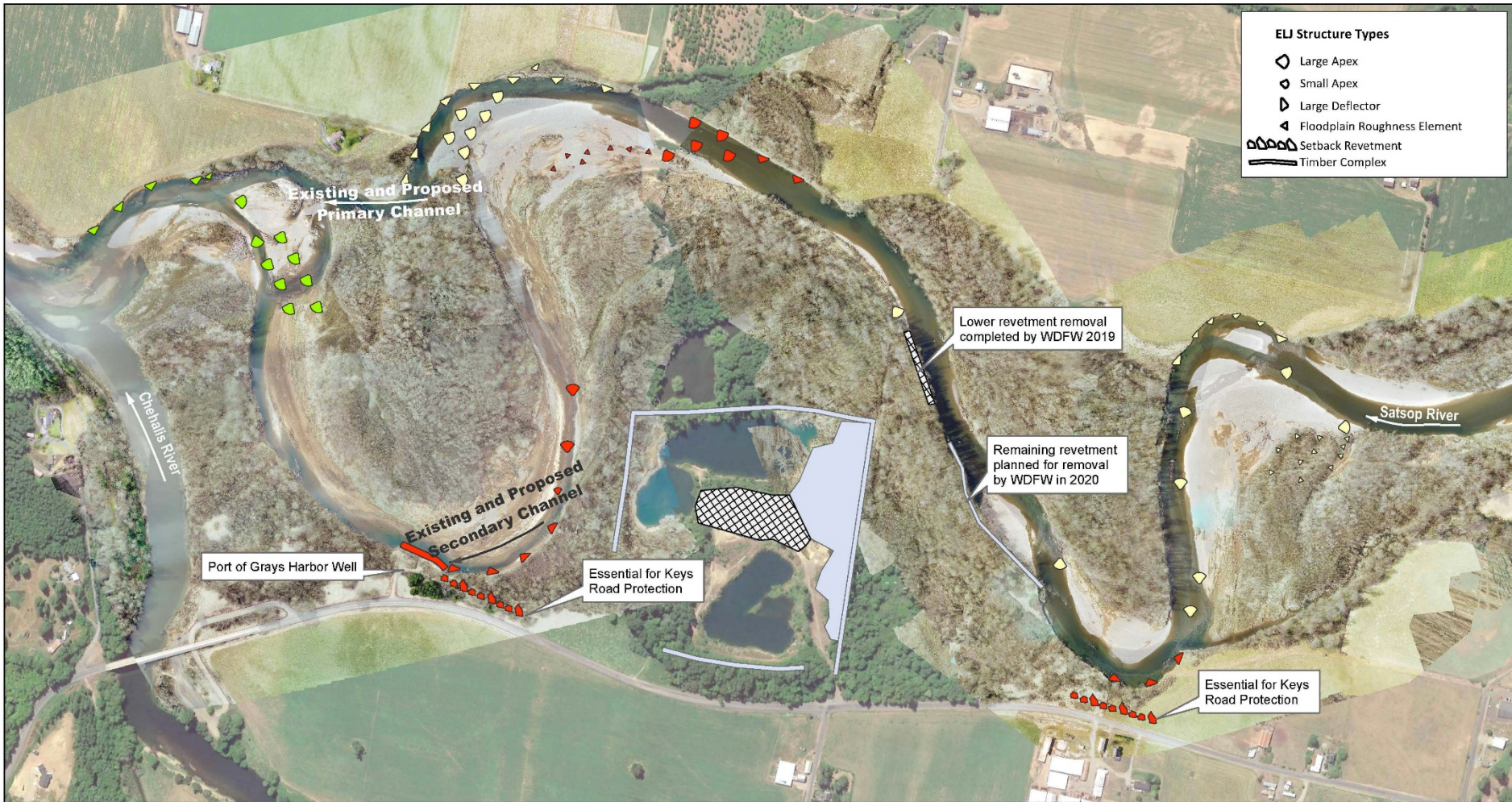
“Planning/Engineering Stage”
5/2019 to 12/2019 -- See [here](#), [here](#), [here](#)



- ✓ **Five Community Meetings:**
4, 9, 11/2018 and 1, 12/2019
- ✓ **Many Individual Meetings**
- ✓ **Multi-Agency Advisory Group**

“Implementation Stage”
7/2019 – See [here](#)

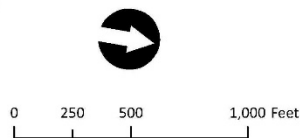




Lower Satsop Reach Scale Assessment and Design: Protecting Infrastructure, Restoring Floodplain Function, and Reducing Erosion and Sedimentation.

Preliminary Design Phased Construction Plan

Aerial imagery 2017 NAIP with 2019 Drone Imagery
 Lambert conformal conic projection, NAD 1983
 State Plane Coordinate System (WA South Zone)



CONSTRUCTION [Funded. Not Funded.]	WDFW "Restoration"	GHC "Restoration and Protection"
2019 -->	Phase I - Ponds, Revetment	
2020 -->	Phase II - Ponds, Revetment	Phase I - Keys Road, Port Well, Floodplain Restoration (A)
2021-22 -->		Phase II - Floodplain Restoration (B), Erosion Reduction (A)
2022-23 -->		Phase III - Floodplain Restoration (C), Erosion Reduction (B)
Future -->		Phase IV - Relocate Keys Road infrastructure (at end of useful life)



Implementation Stage (Advisory Group)

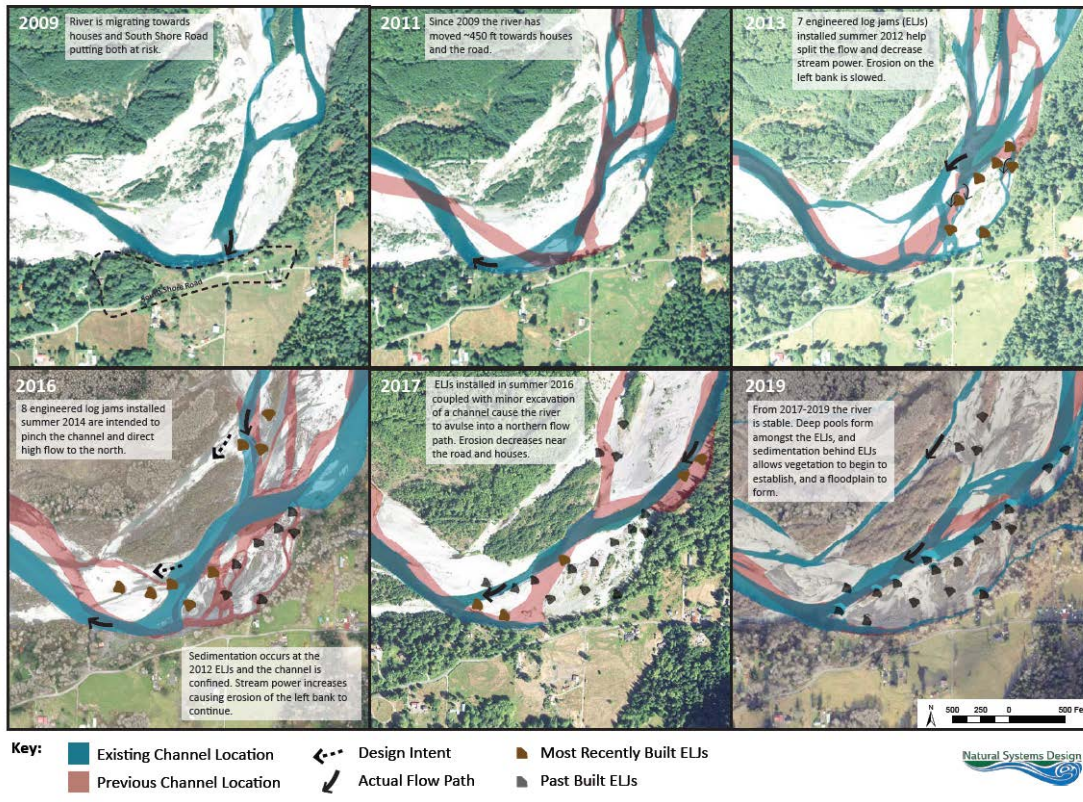


Implementation Stage (Examples)

Timber complex →



Upper Quinault Channel Migration Lower PA5



Apex Structure



Deflector Structure

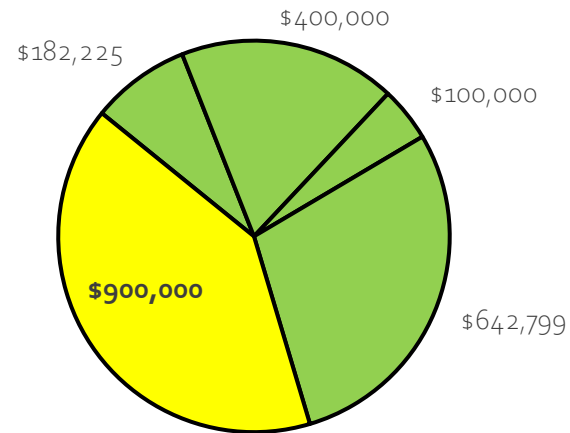


Implementation Stage

GHC Phase I (2020)

Phase I -- \$2,225,024

- Funds Secured -- 2019-21 State Capital Budget (\$182,225)
- Funds Secured -- GHC .09 Local Funds (\$400,000)
- Funds Secured -- GHC Road Fund (\$100,000)
- Funds Secured -- Flood Authority Local Projects Reobligation Funds (\$642,799)
- Member Request -- 2019-21 Supplemental State Capital Budget (\$900,000)



WDFW Phase II (2020)

Cost

Status

2020:

- | | | |
|--|--------------------|-------------------|
| • Phase II, (Construction) -- Ponds, Revetment | \$1,429,000 (WCRI) | Funded, Scheduled |
|--|--------------------|-------------------|

Implementation Stage (2019)



WDFW Ponds Restoration
(remove spoils piles, shallow out ponds)



Lower WDFW Revetment
(remove 200' rock toe, excavate 20' x 85' channel)

Contacts

Organization	
Grays Harbor County	Rob Wilson 360/249-4222 RWilson@co.grays-harbor.wa.us
Grays Harbor Conservation District	Anthony Waldrop 360/249-8532 ghcdwater@gmail.com
WA Department of Fish and Wildlife	Michelle Cramer 360/902-2610 Michelle.Cramer@dfw.wa.gov
Port of Grays Harbor	Alissa Shay 360/482-1651 ashay@portgrays.org
Natural Systems Design	Miranda Smith 206/480-1127 miranda@naturaldes.com
Chehalis River Basin Flood Authority	Scott Boettcher 360/480-6600 scottb@sbgh-partners.com

Resource

https://www.ezview.wa.gov/site/alias__1492/37609/lower_satsop_restoration_and_protection_program.aspx



The screenshot shows the EZview portal for the Chehalis River Basin Flood Authority. The header includes the agency logo, the 'EZview' label, and project information: 'Project: Chehalis River Basin Flood Authority' and 'UPI#: 1492'. A navigation bar contains links for Home, Local Projects, Meetings, Capital Budget 2013-15, Outreach & Education, Gages & Stations, Documents, Contacts, Library, and FAQs. Search, Messages, and Project Member icons are also present. The main content area is titled 'Key Links' and 'Lower Satsop Restoration & Protection Program'. It is divided into two phases: Phase I and Phase II. Phase I includes links for the 2020 Legislative Funding Request (with details on Rep. Brian Blake & Rep. Jim Walsh and Sen. Dean Takko & Sen. Van De Wege), an Overview/FAQ, a Map, and a Presentation. Phase II includes the 2021 ASRP Funding Request (with details on Request For Proposals and Funding Proposal). An 'ALSO' section at the bottom provides links to the Webcam and Library.

Key Links

Lower Satsop Restoration & Protection Program

-- PHASE I --

2020 Legislative Funding Request:

- . Rep. Brian Blake & Rep. Jim Walsh (*submitted 11-12-2019*) → Click [here](#).
- . Sen. Dean Takko & Sen. Van De Wege (*draft 11-26-2019*) → Click [here](#).

Overview/FAQ (12-16-2019) → Click [here](#).

Map (12-13-2019) → Click [here](#).

Presentation (12-16-2019) → Click [here](#).

-- PHASE II --

2021 ASRP Funding Request:

- . Request For Proposals (*issued 11-15-2019*) → Click [here](#).
- . Funding Proposal (*to be submitted 2-05-2020*) → Click [here](#).

-- ALSO --

Webcam → Click [here](#).

Library → Click [here](#).

What's Next?

1. Upcoming Meetings/Briefings:

Date	Time	Location	Audience
9/30/2019	1:00 p.m.	Montesano, WDFW Regional Office	Lower Satsop Advisory Group
10/01/2019	10:30 a.m.	Montesano, Grays Harbor County Administration Building	Grays Harbor County Commissioners
10/03/2019	1:15 p.m.	Centralia, Train Depot	Chehalis Basin Board
10/08/2019	9:00 a.m.	Aberdeen, Port of Grays Harbor	Port of Grays Harbor
10/09/2019	10:30 a.m.	Olympia, 120 Union Avenue	The Nature Conservancy
10/31/2019	10:00 a.m.	Montesano, Grays Harbor County Administration Building	Rep. Brian Blake (19 th Leg. District) Rep. Jim Walsh (19 th Leg. District) Chris Davis (Governor's Policy Office)
12/16/2019	3:00 p.m.	Montesano, WDFW Regional Office	Lower Satsop Advisory Group
12/16/2019	6:30 p.m.	Brady Firehall	Lower Satsop Community Members

2. JARPA (Permitting) = Early-January 2020.