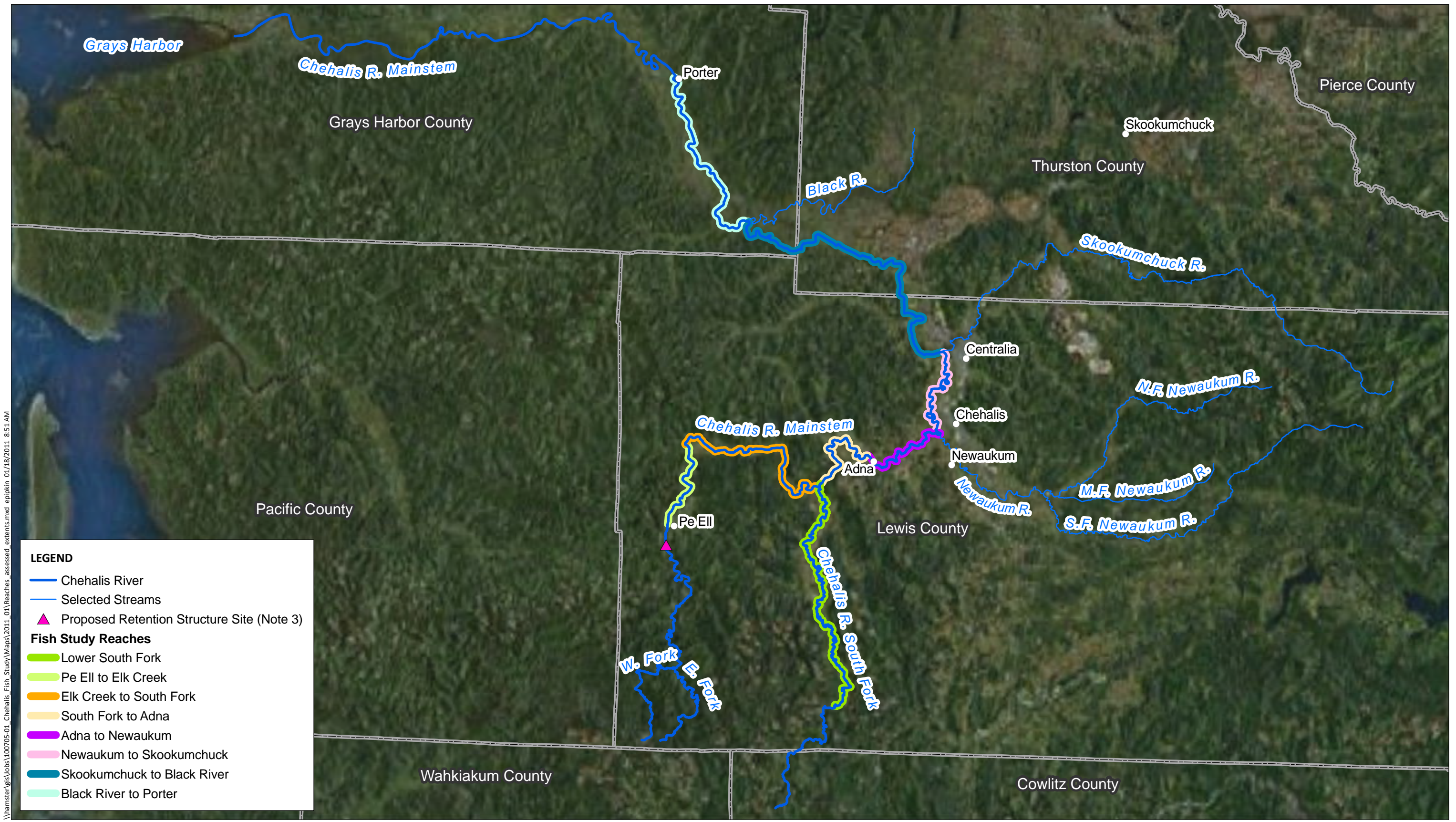


\\hamster\gis\jobs\100705-01_Chehalis_Fish_Study\Maps\2011_01\Reaches_assessed_extents.mxd epipkin 01/18/2011 8:51 AM



LEGEND

- Chehalis River
- Selected Streams
- ▲ Proposed Retention Structure Site (Note 3)

Fish Study Reaches

- Lower South Fork
- Pe Ell to Elk Creek
- Elk Creek to South Fork
- South Fork to Adna
- Adna to Newaukum
- Newaukum to Skookumchuck
- Skookumchuck to Black River
- Black River to Porter

- NOTES:**
1. Horizontal datum: WA State Plane South Zone NAD 83, Feet.
 2. Aerial image provided by ESRI Web Services.
 3. Proposed retention structure location is approximate.

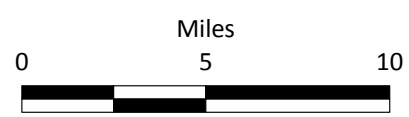
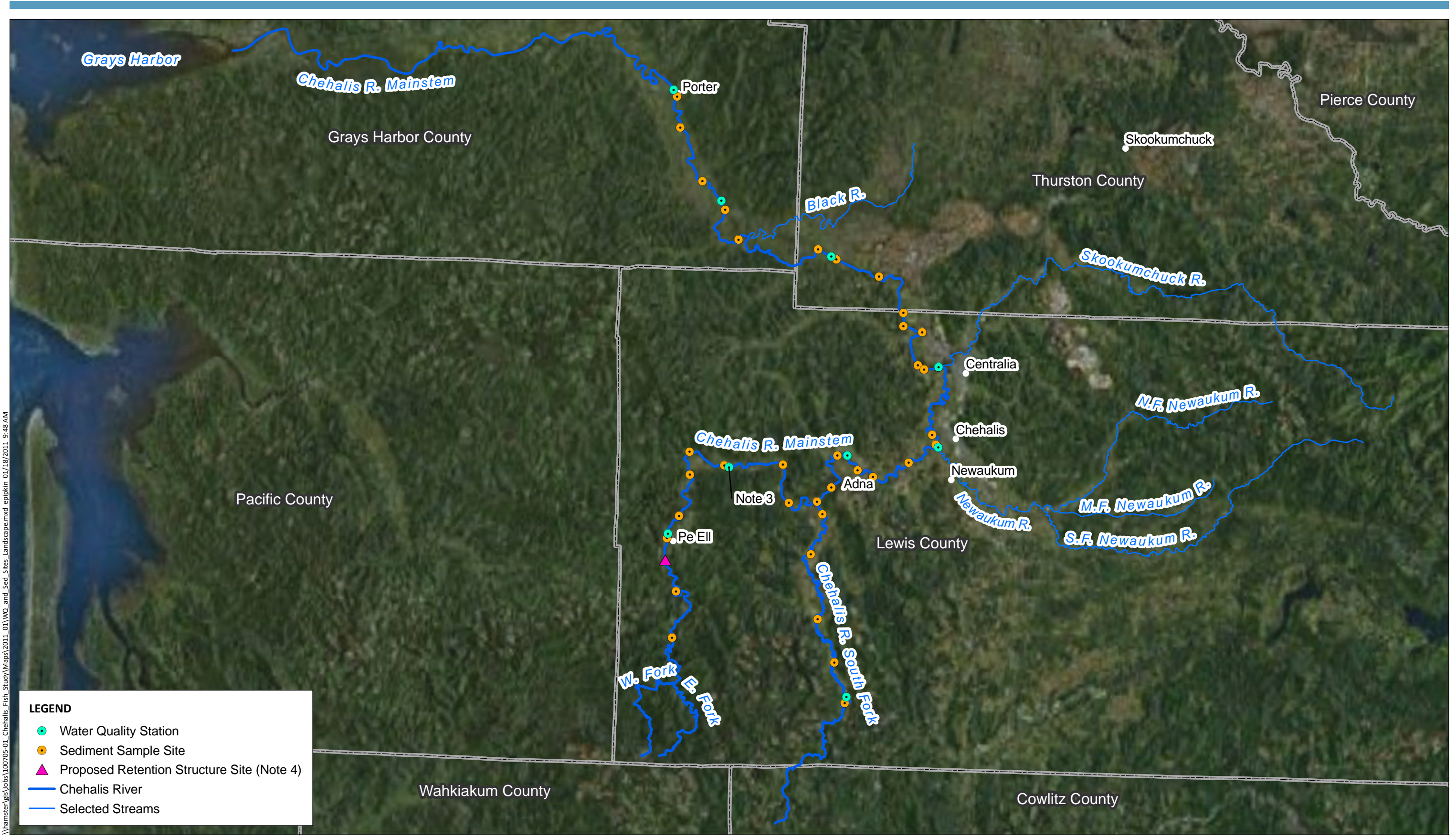


Figure 1
Fish Study Reaches
Flood Storage Fish Analysis
Chehalis River Basin Flood Authority / Lewis Co. WA



\\hamster\gis\jobs\100705-01_Chehalis_Fish_Study\Maps\2011_01\WQ_and_Sed_Sites_Landscape.mxd epipkin 01/18/2011 9:48 AM

LEGEND

- Water Quality Station
- Sediment Sample Site
- ▲ Proposed Retention Structure Site (Note 4)
- Chehalis River
- Selected Streams

- NOTES:**
1. Horizontal datum: WA State Plane South Zone NAD 83, Feet.
 2. Aerial image provided by ESRI Web Services.
 3. Rainbow Falls WQ station location is approximate, GPS signal was insufficient to record location.
 4. Proposed retention structure location is approximate.

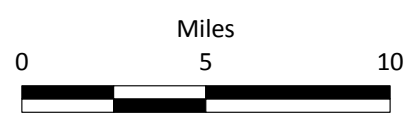


Figure 2
 Water Quality and Sediment Sampling Sites
 Flood Storage Fish Analysis
 Chehalis River Basin Flood Authority / Lewis Co. WA