

Chehalis Early Flood Warning System

Project Update

David C. Curtis, Ph.D.
WEST Consultants
June 16, 2011

Objectives

- A comprehensive web interface,
- Data monitoring improvements,
- Flood warning signage.

Guiding Principles

- Cost effective
- Leverage existing resources
- Immediate benefits

Web Interface

- Commercially Hosted: OneRain, Inc.
 - Contrail Web
 - Robust and secure
 - Geographic security
 - Proven
 - 27,000 sensors nationwide
 - 15 million new records each month
 - Federal, state, local agencies

Chehalis River Basin Flood Resources

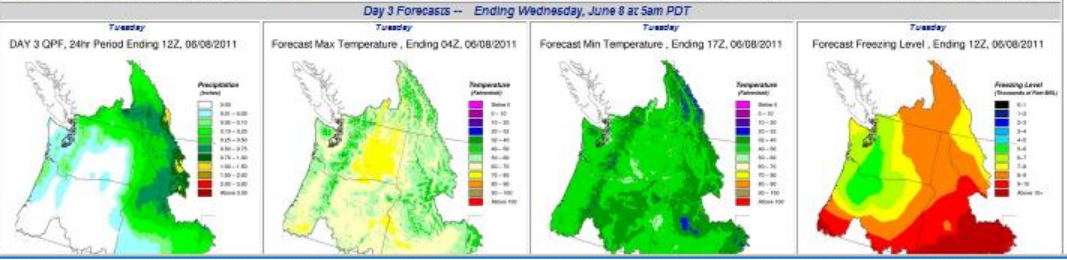
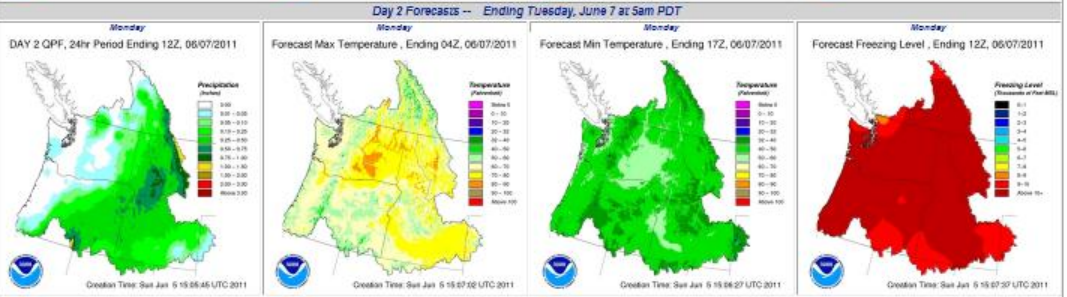
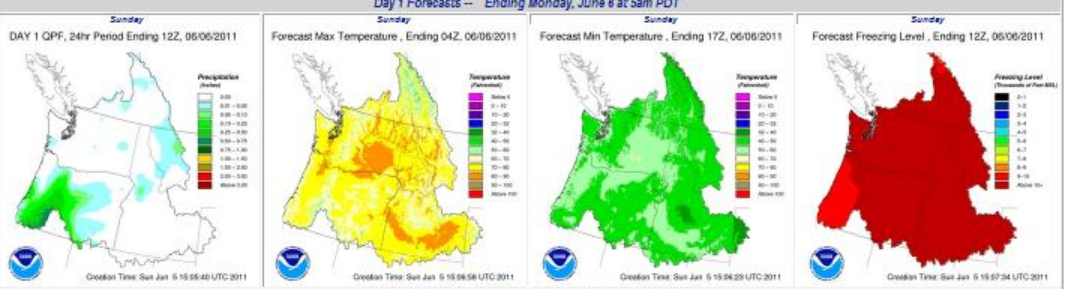
- Menu**
- [Home](#)
- [Maps](#)
- [Sites](#)
- [Graphs](#)
- [News](#)
- [Help](#)
- [Administration](#)
- Links**
- [Flood Authority Website](#)
- [Chehalis River Basin Flood Resources](#)
- [Chehalis River at Porter](#)
- [Chehalis River at Grand Mound](#)
- [Chehalis River at Centralia](#)
- [Chehalis River Near Doty](#)
- [Skookumchuck River at Centralia](#)

 Weather Forecast	 Rainfall Forecast	 River Forecast	 Flood Maps	 Gage Data Graphs
 Gage Data Maps	 Flood Authority News	 Road Conditions	 USGS Gages	 Help

Northwest River Forecast Center 10 Day Meteorological Forecasts

Home Previous Page 3 Day Graphical Forecasts Forecast Verification Regional Forecasts Description

Click on image to Display Larger Plot



Chehalis River Basin Flood Resources

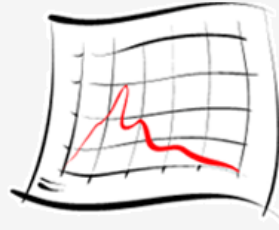
- Menu**
- [Home](#)
- [Maps](#)
- [Sites](#)
- [Graphs](#)
- [News](#)
- [Help](#)
- [Administration](#)
- Links**
- [Flood Authority Website](#)
- [Chehalis River Basin Flood Resources](#)
- [Chehalis River at Porter](#)
- [Chehalis River at Grand Mound](#)
- [Chehalis River at Centralia](#)
- [Chehalis River Near Doty](#)
- [Skookumchuck River at Centralia](#)



[Weather Forecast](#)



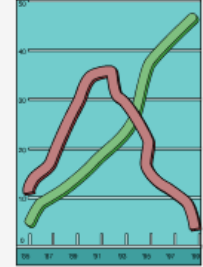
[Rainfall Forecast](#)



[River Forecast](#)



[Flood Maps](#)



[Gage Data Graphs](#)



[Gage Data Maps](#)



[Flood Authority News](#)



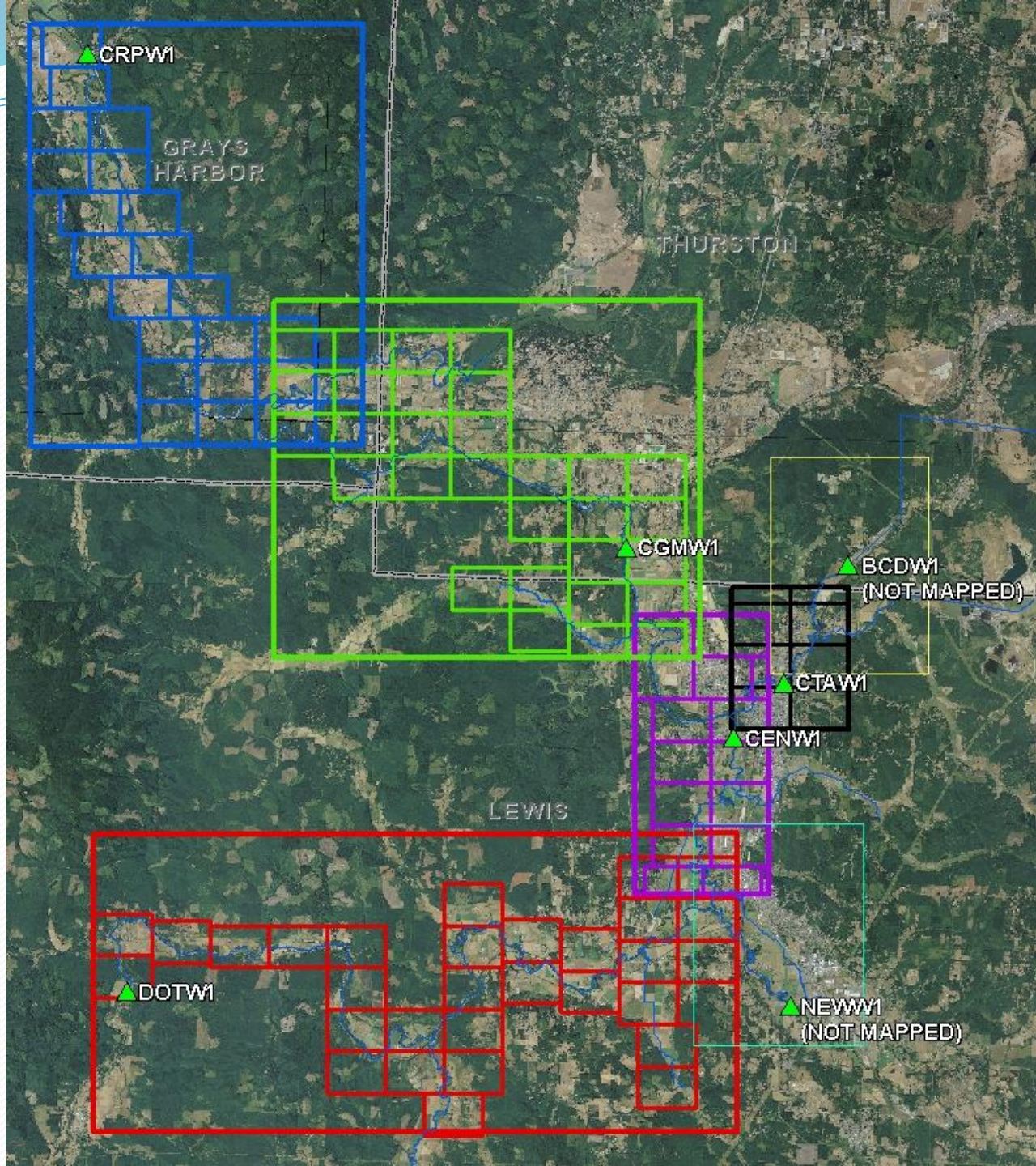
[Road Conditions](#)



[USGS Gages](#)

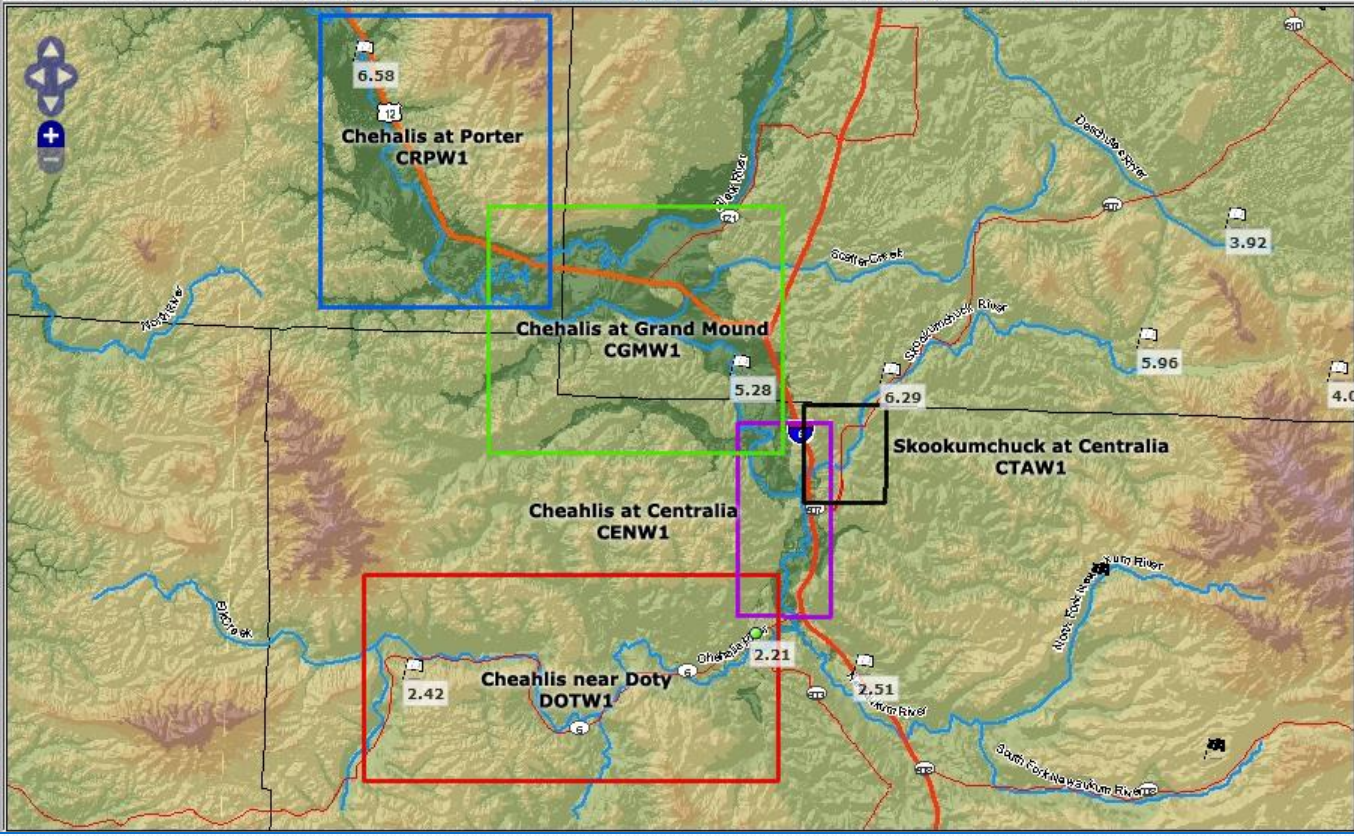


[Help](#)



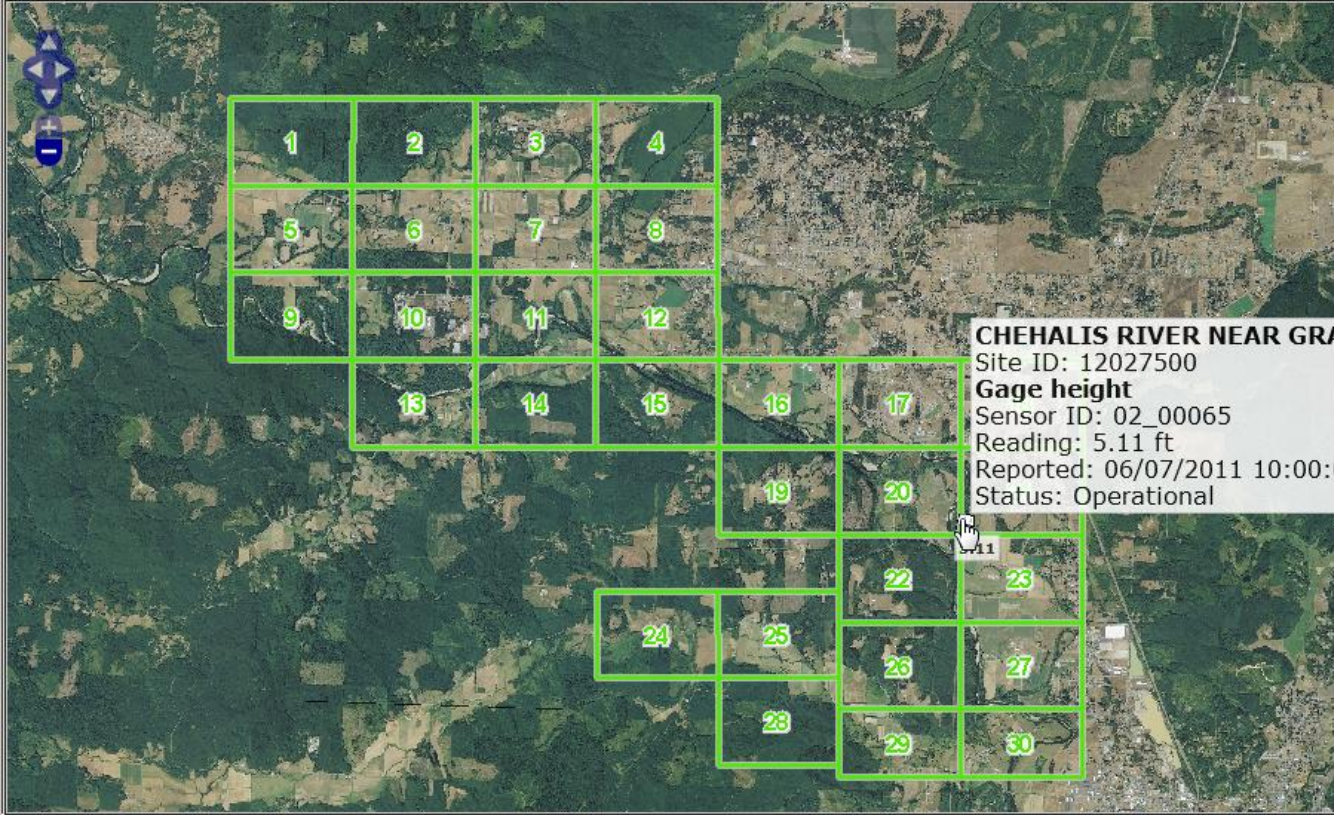
Chehalis River Basin Flood Resources

Type: Gage height (ft) | Map: Washington Regional Map | Overlay: - Toggle Overlay - | View: All Sites



Chehalis River Basin Flood Resources

Map controls: Type: Gage height (ft) Map: Grand Mound-CGMW1 Overlay: - Toggle Overlay - View: All Sites



CHEHALIS RIVER NEAR GRAND MOUND, WA
Site ID: 12027500
Gage height
Sensor ID: 02_00065
Reading: 5.11 ft
Reported: 06/07/2011 10:00:00
Status: Operational



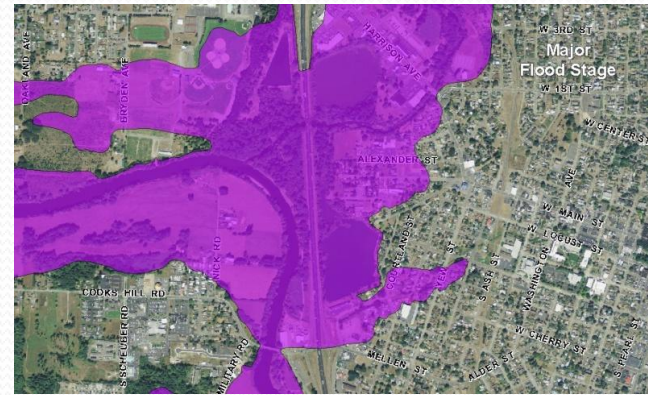
No Flood



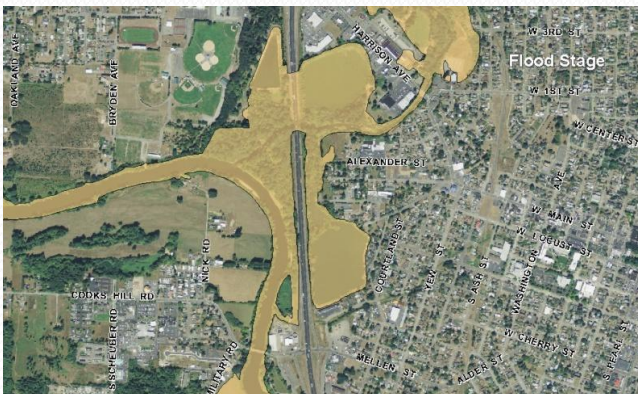
Minor Flood



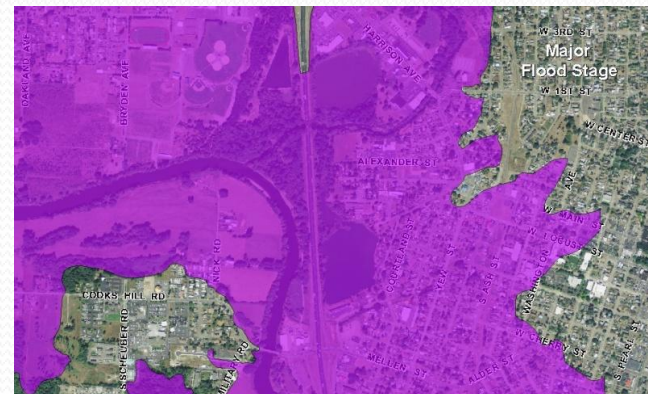
Action Stage



Major Flood

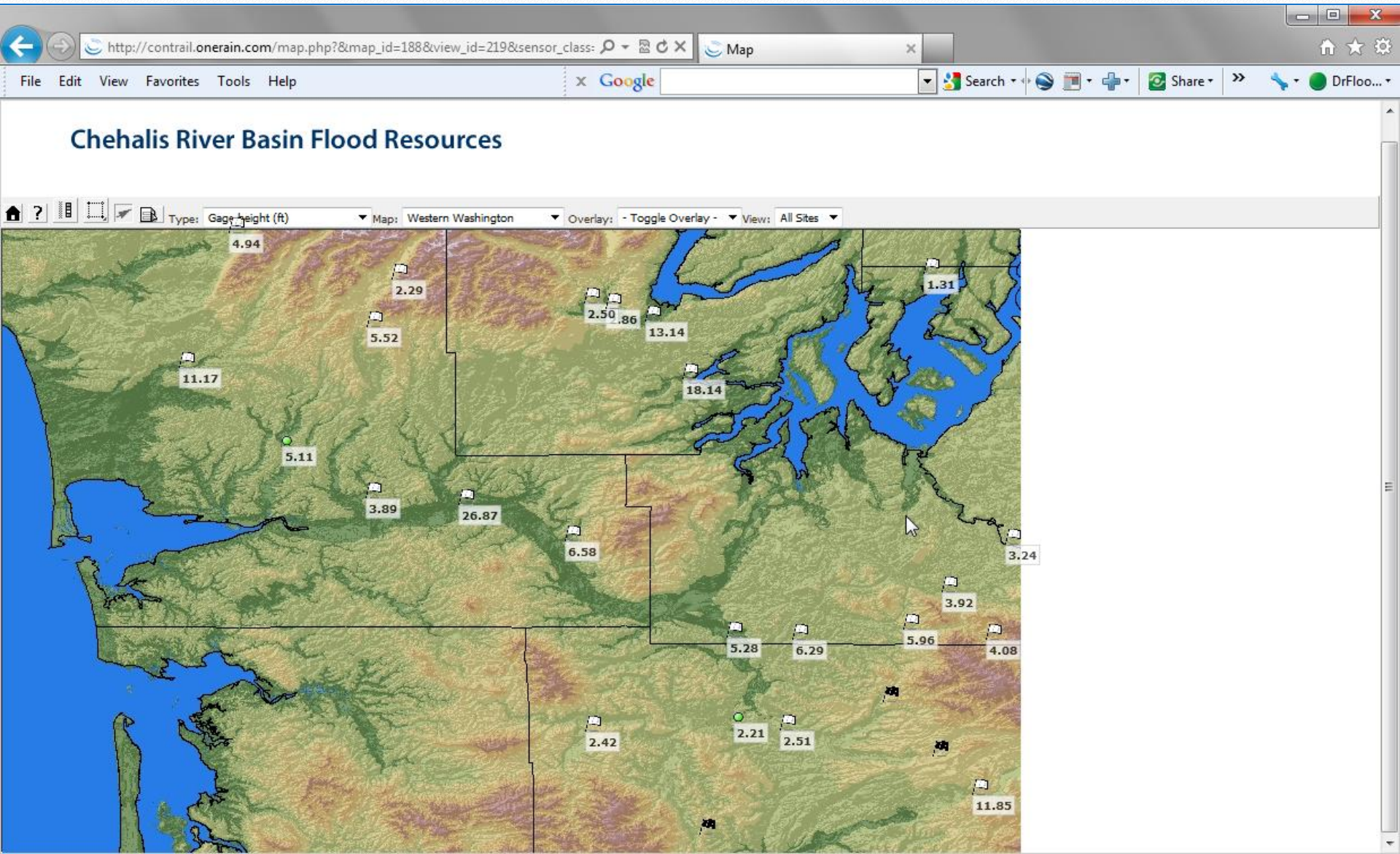


Flood

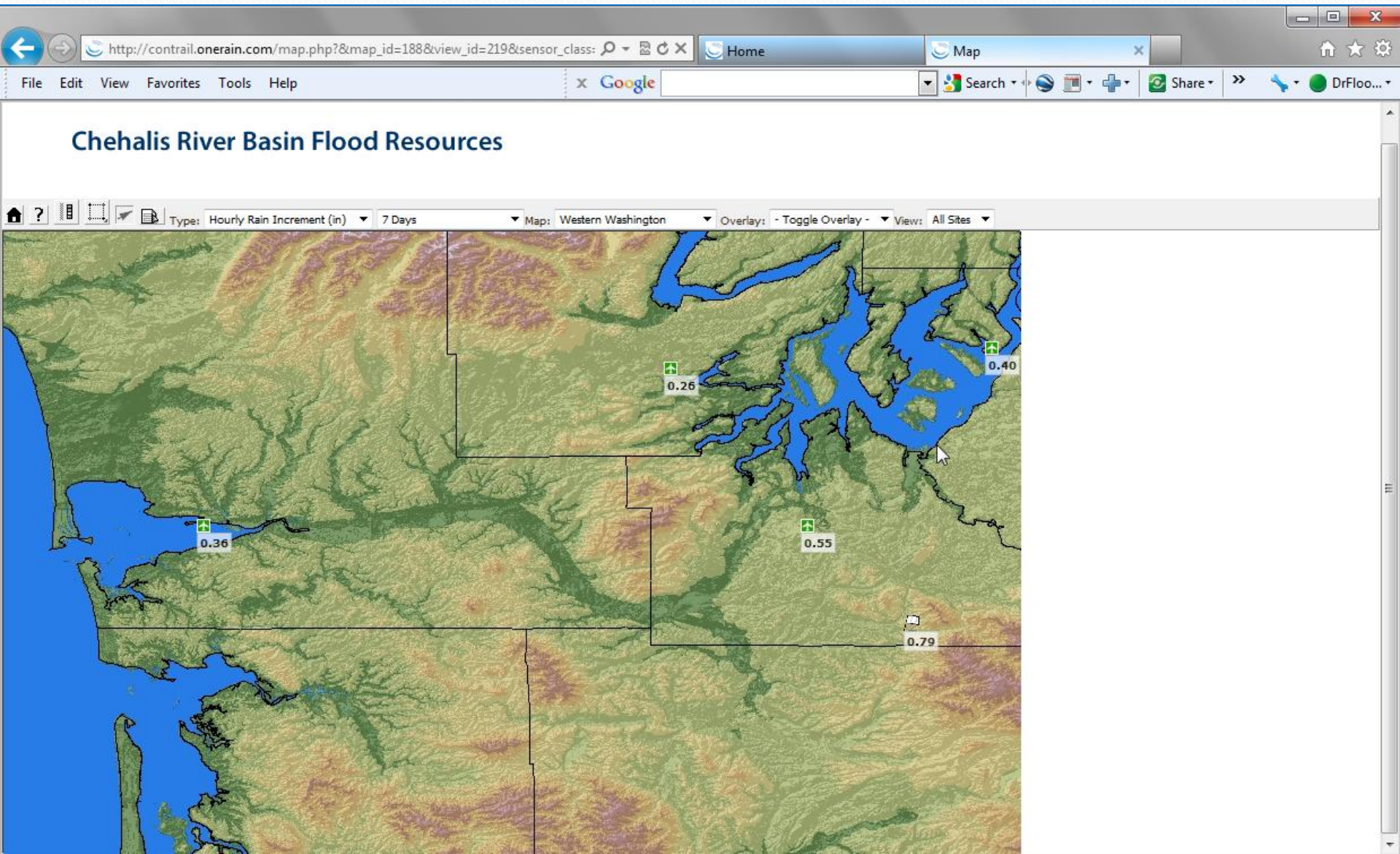


Major Flood

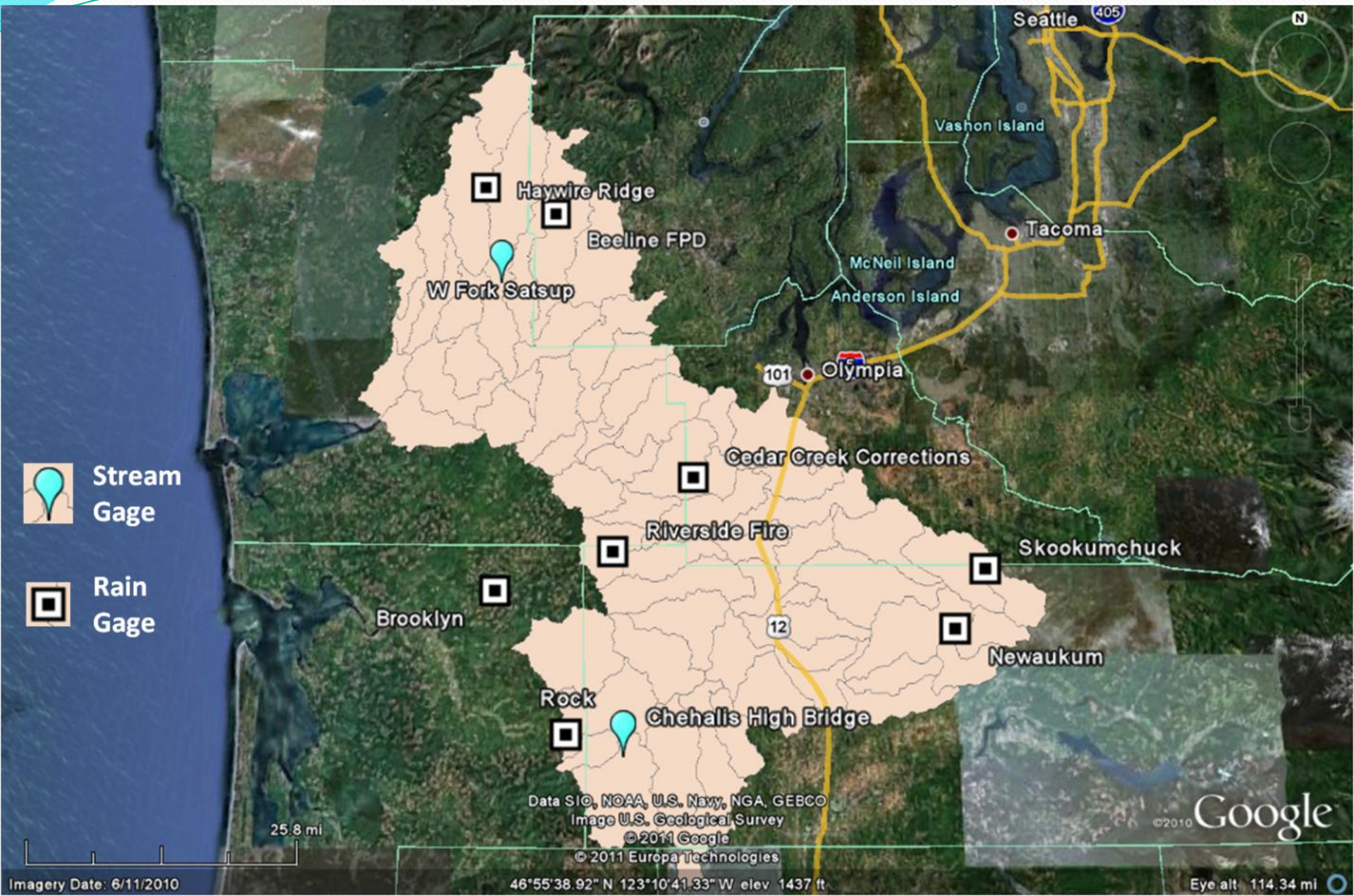
Existing Stream Gages



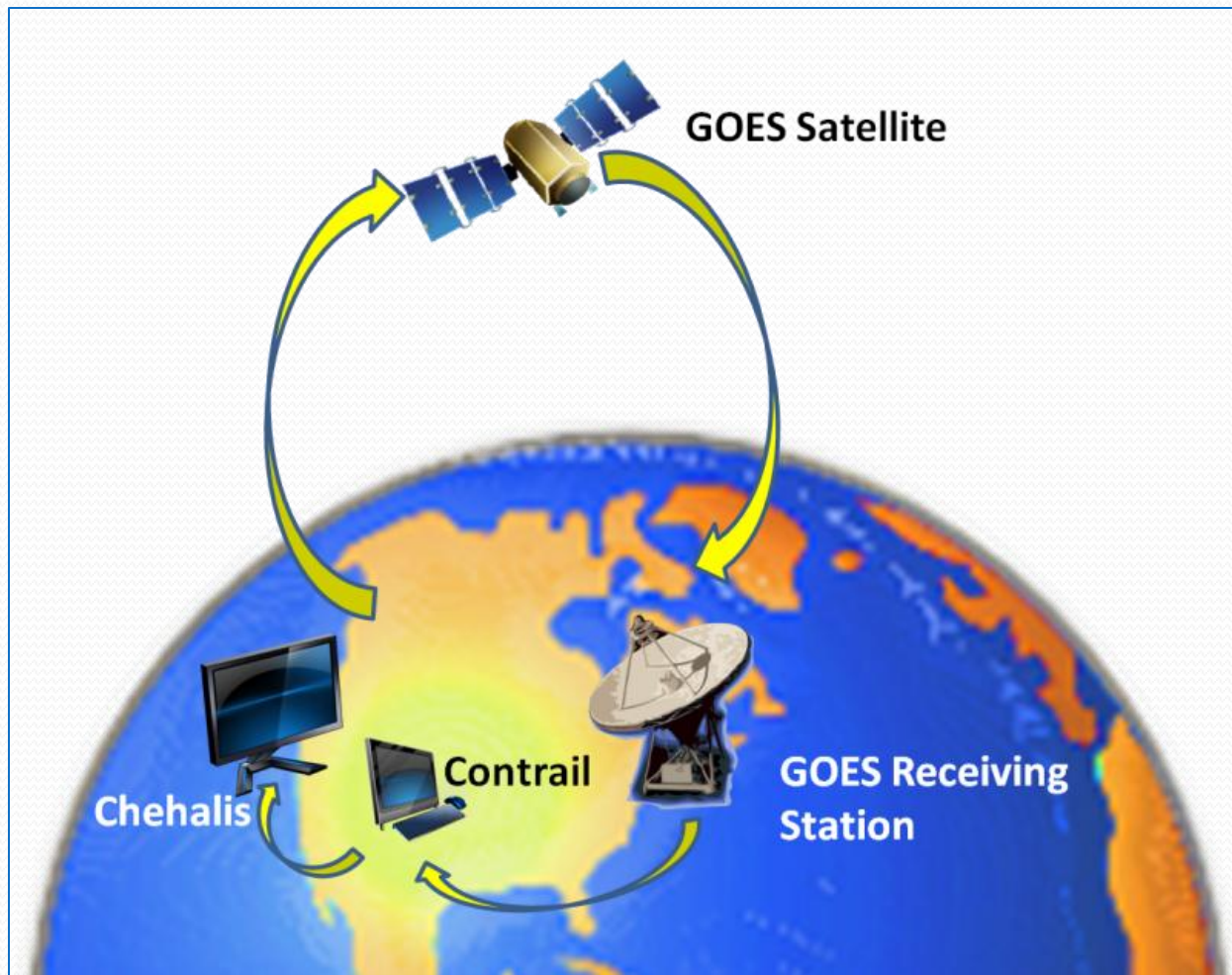
Existing Rain Gages

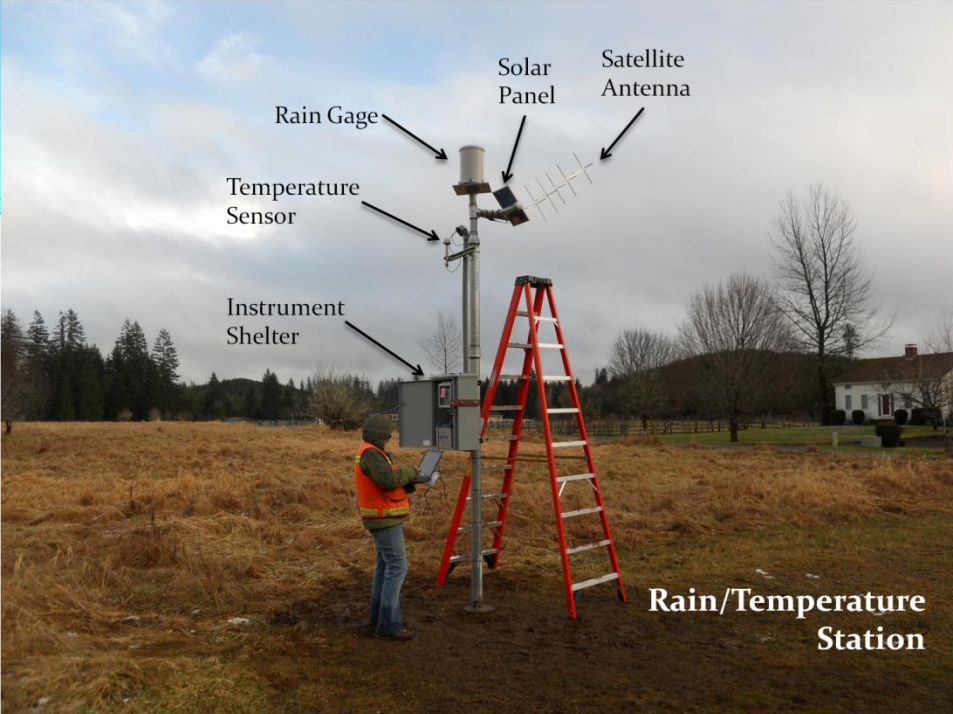


New Gages



GOES System





New Gage Sites



Bonus Points

- Found additional gages
 - Stream: Black River near Oakville (WA Dept of Ecology)
 - Rain: Skookumchuck River below Dam (USGS)
- Transalta
 - Reservoir elevation
 - Negotiated access to Transalta data system
- New mapping
 - 500 miles vs. 100+ miles
 - Contrail mapping technology

Bonus Points

- Community Rating System
 - StormReady Certification
 - Additional CRS Points => Reduce Insurance Rates
- FWS supports future structural flood control options

Next Steps

- Installation Permits
 - Weyerhaeuser sites (4 rain, 1 stream)
 - WA DNR (1 Rain)
- Pacific County Sites
- Contrail Web
 - Annual subscription
- Future Gage Maintenance