

An aerial photograph of a rural landscape. In the center, there is a small farmstead with several buildings and a dirt road. Surrounding the farm are large, green, rectangular fields, likely used for agriculture. A winding river or stream flows through the landscape, particularly on the right side. The background shows more fields and some distant structures. The overall scene is a mix of natural and agricultural land.

Chehalis Basin Strategy Aquatic Species Restoration Plan (ASRP)

September 5, 2019
Chehalis Basin Board Meeting

Phase 1 ASRP Timeline

- Pre publication outreach: Summer-Fall 2019
- Publication: Mid-November 2019
- Post publication outreach: Late fall 2019 -winter 2020

Phase 1 Outreach: Pre Publication

Objectives:

1. Build awareness of plan strategies
2. Get targeted feedback on:
 - Strategies within plan
 - Implementation
 - Opportunities for partnership in future

Phase 1 Outreach: Pre Publication

Types of Groups:

- 1. Local governments**
 - Focus on three counties
- 2. Restoration/conservation focused groups**
 - i.e. Chehalis Lead Entity, Chehalis Basin Partnership, restoration practitioners, etc.
- 3. Landowners and agricultural community**
 - VSP workgroups, agricultural meet-ups
- 4. Board member organizations**

Targeted Feedback

Local Governments:

- Conflicts and consistencies with land use planning at the county level

Restoration & Conservation focused groups

- Implementation feasibility and logistics planning

Landowners and Agriculture Community

- Feasibility of implementation in their community, incentive interests

Phase 1 Outreach: Post Publication

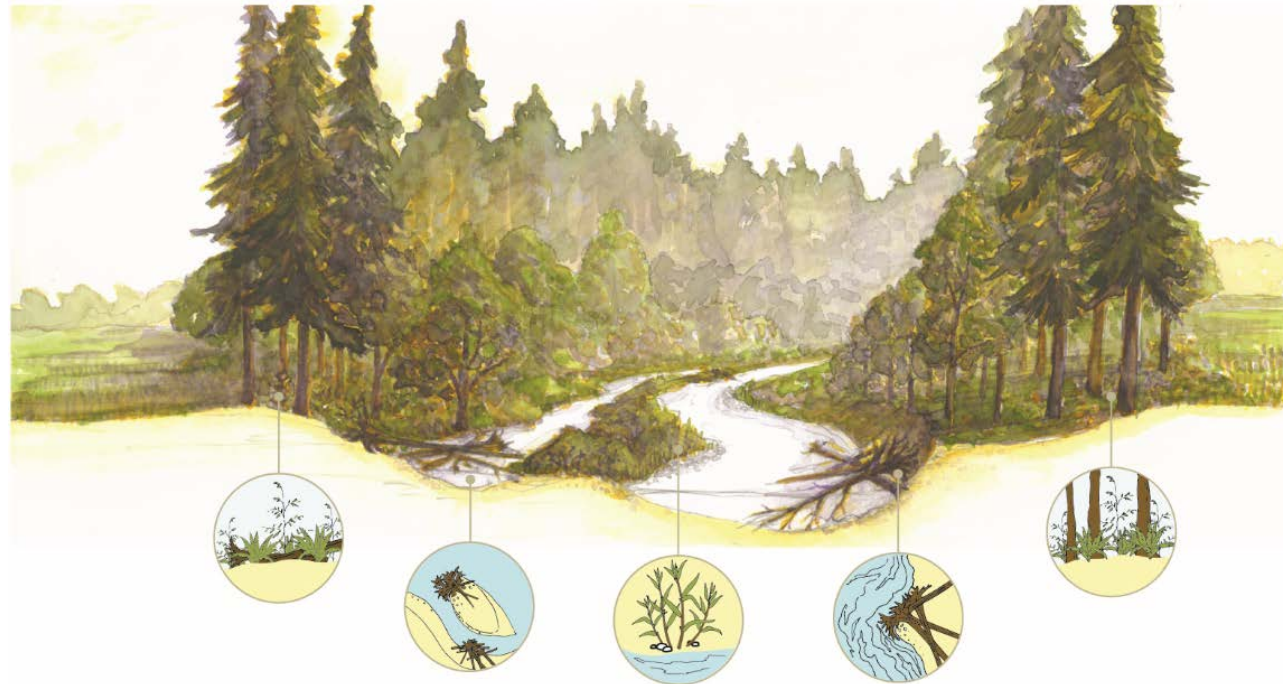
- Science Symposium & ASRP open house: Mid November
- Public release comment period
 - Ecology published document
 - 2 months in length (mid November 2019 – mid January 2020)
 - Online comment form

ASRP Phase 1 Development

- Internal reviews:
 - ASRP development groups reviewing sections of document in preparation for public release
 - Full document internal review: late September/early October

Restoration Approach

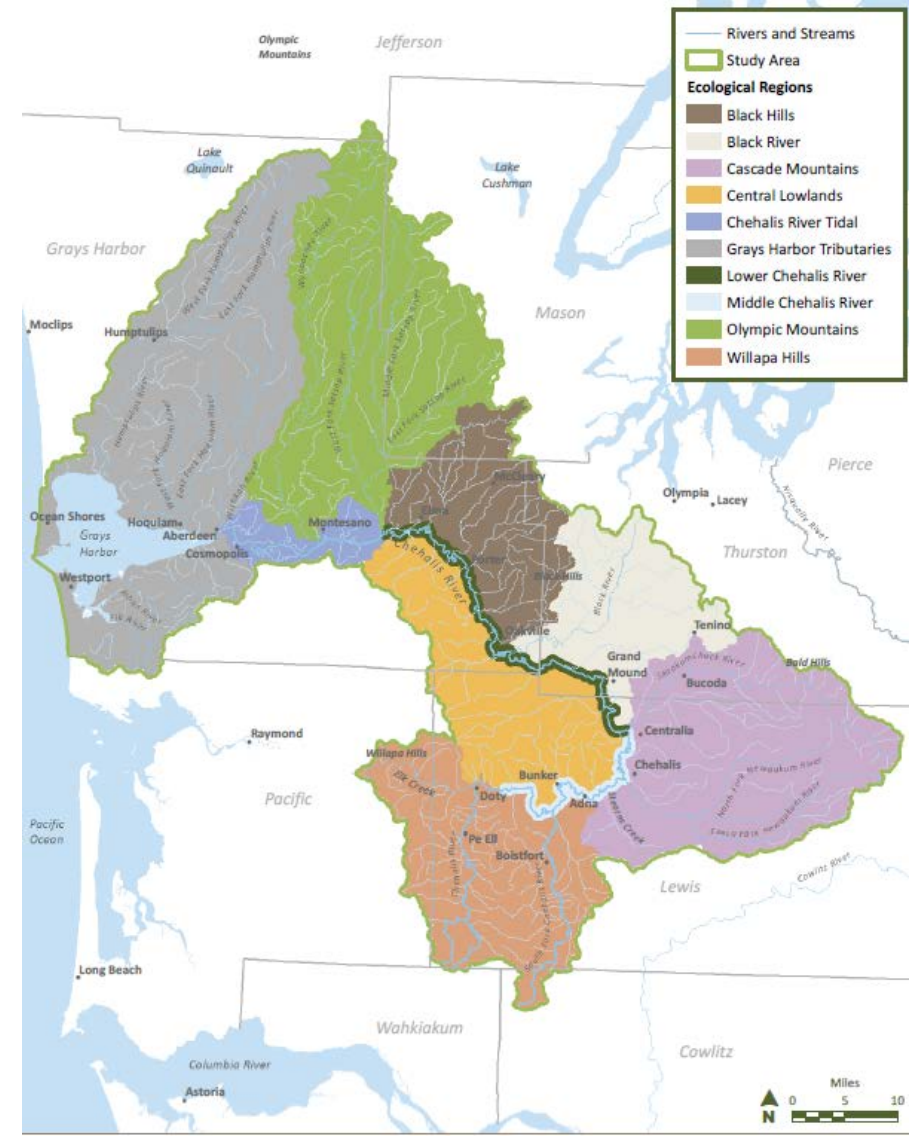
- Address what is broken
- Protect and enhance what is working
- Re-establish natural processes
- Protect, re-establish and increase habitat capacity



ASRP Spatial Scale

Basin is divided into 10 ecological regions

- Distinct ecological characteristics
- Unique geologic features



Scenario 1, Protect and Enhance Core Habitats



Protect and enhance core habitat areas

River Restoration = 220 miles

Riparian/Floodplain

Restoration = 9,600 acres

Barriers = 115

Average Cost = \$442M

Scenario 2, Protect Core Habitats and Restore Key Opportunities



Protect and enhance core habitats and expand to best restoration opportunities to benefit multiple species

River Restoration = 315 miles

Riparian/Floodplain Restoration = 10,900 acres

Barriers = 250

Average Cost = \$541M

- Rivers and Streams
- Study Area
- Rivers Proposed for Protection/Restoration**
 - Scenario 1 Rivers also Included in Scenario 2: 260 miles
 - Additional Rivers Proposed for Scenario 2: 55 miles
 - Rivers with Restoration at Nodes Only

Scenario 3, Protect Core Habitats and Expand Distribution



Protect and enhance core habitats and increase spatial and life history diversity

River Restoration = 430 miles

Riparian/Floodplain

Restoration = 15,000 acres

Barriers = 350

Average Cost = \$762M

- Rivers and Streams
- Study Area
- Rivers Proposed for Protection/Restoration**
 - Scenario 1 Rivers also Included in Scenario 3a: 293 miles
 - Scenario 2 Rivers also Included in Scenario 3a: 66 miles
 - Additional Rivers Proposed for Scenario 3a: 79 miles
 - Rivers with Restoration at Nodes Only

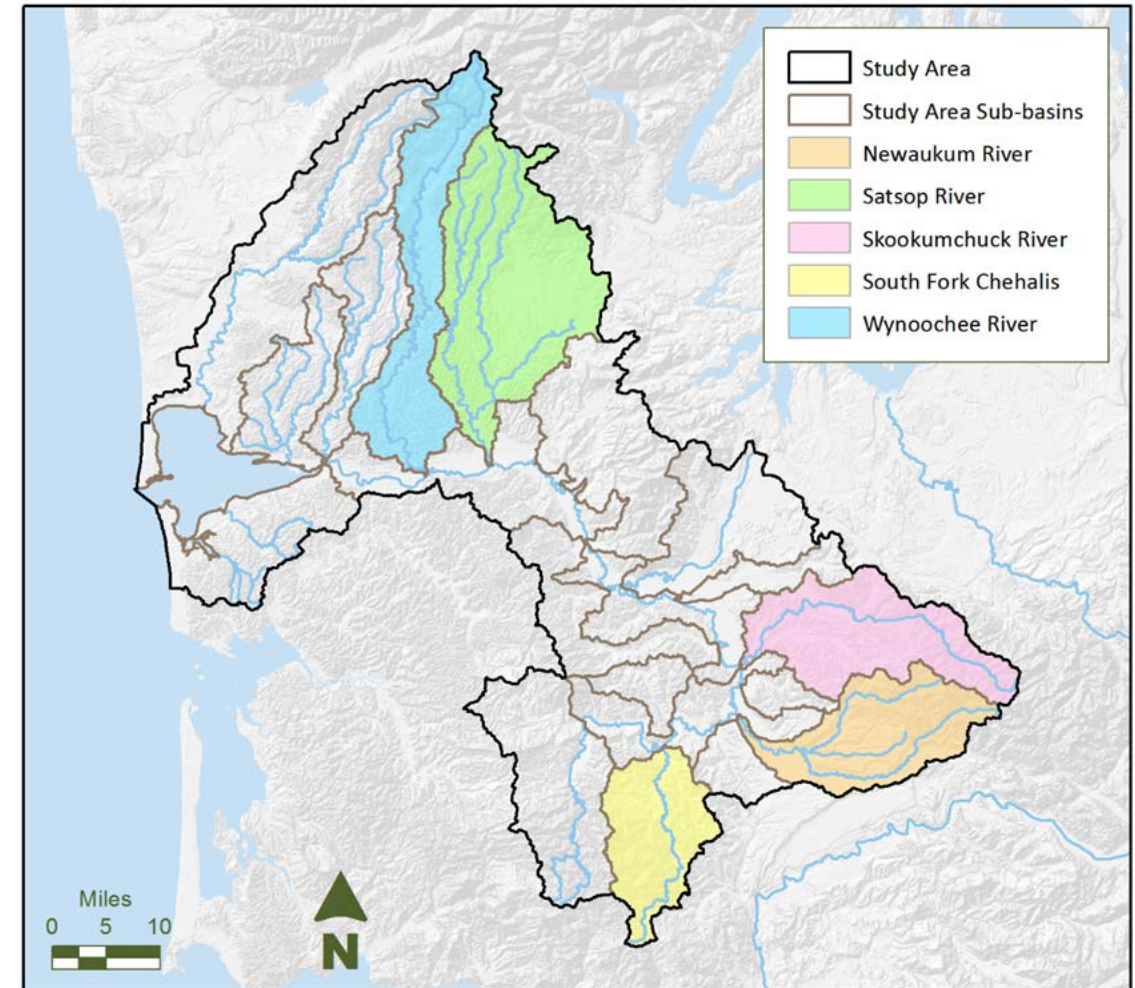
Implementation 19-21

Currently underway/completed:

- 5 early action reach projects
- Native aquatic species restoration (Oregon spotted frog, etc.)
- 2017-19 biennium barrier projects

Looking ahead:

- Priority sub-basin focus
- Additional reach scale projects:
 - Wood loading in managed forests
 - Landowner partnerships in key ecological areas
- Over \$2 million for “small projects” grant rounds starting November 2019
 - High priority:
 - Barriers
 - Plantings
 - Landowner relationship development



Early ASRP Implementation Priorities

- Protect and enhance habitats (including barrier removals) in the biggest producers and core areas of Scenario 1
- Projects that provide immediate benefits of spring Chinook
- Test implementation of nodes and reconnection of off-channel habitats in Lower Chehalis mainstem
- Protection of key areas like Elk Creek and surge plain, headwaters, Humptulips tidal areas
- Find key opportunities in smaller streams and implement rapid action wood placement
- Riparian plantings in Lower and Middle Chehalis
- Test methods in upper and lower river for reducing water temperatures

Questions



For more information contact:

Emelie McKain - ASRP Project Manager

Emelie.mckain@dfw.wa.gov

(360) 810-0473