



# AQUATIC SPECIES RESTORATION PLAN

STEERING COMMITTEE RECOMMENDATIONS FOR 21-23  
IMPLEMENTATION

# AGENDA

- Steering Committee recommendations for:
  - 2021-23 ASRP spending plan
  - Project implementation priority areas and actions

*Seeking Board guidance and support of approach*

- Communicating information to implementers
  - Website updates
- Ongoing implementation update
  - Early action reaches
  - 2020 grant round projects





# 2021-2023 ASRP SPENDING PLAN

# PROPOSED 2021-2023 BUDGET

Topics	Cost Estimate (Millions \$)
Projects	20.40
Implementation Support	6.26
Materials Sourcing	0.80
M&AM	4.50
Project Support	0.96
ASRP Development/Support	4.21
Participation	3.32
RCO	0.89
TOTAL	30.87

Reduced from  
\$20.65M in July

\$8.5M Reserve  
Comes from  
Here

# ASRP DEVELOPMENT/SUPPORT

Participation

\$3.3M

RCO

\$0.9M



WASHINGTON STATE  
Recreation and  
Conservation  
Office





# IMPLEMENTATION SUPPORT

\$6.3M

Materials Sourcing

\$0.8M



Flickr: Anna L Martin

Monitoring and Adaptive Management

\$4.5M



WDFW Rotary Screw Trap

Project Support

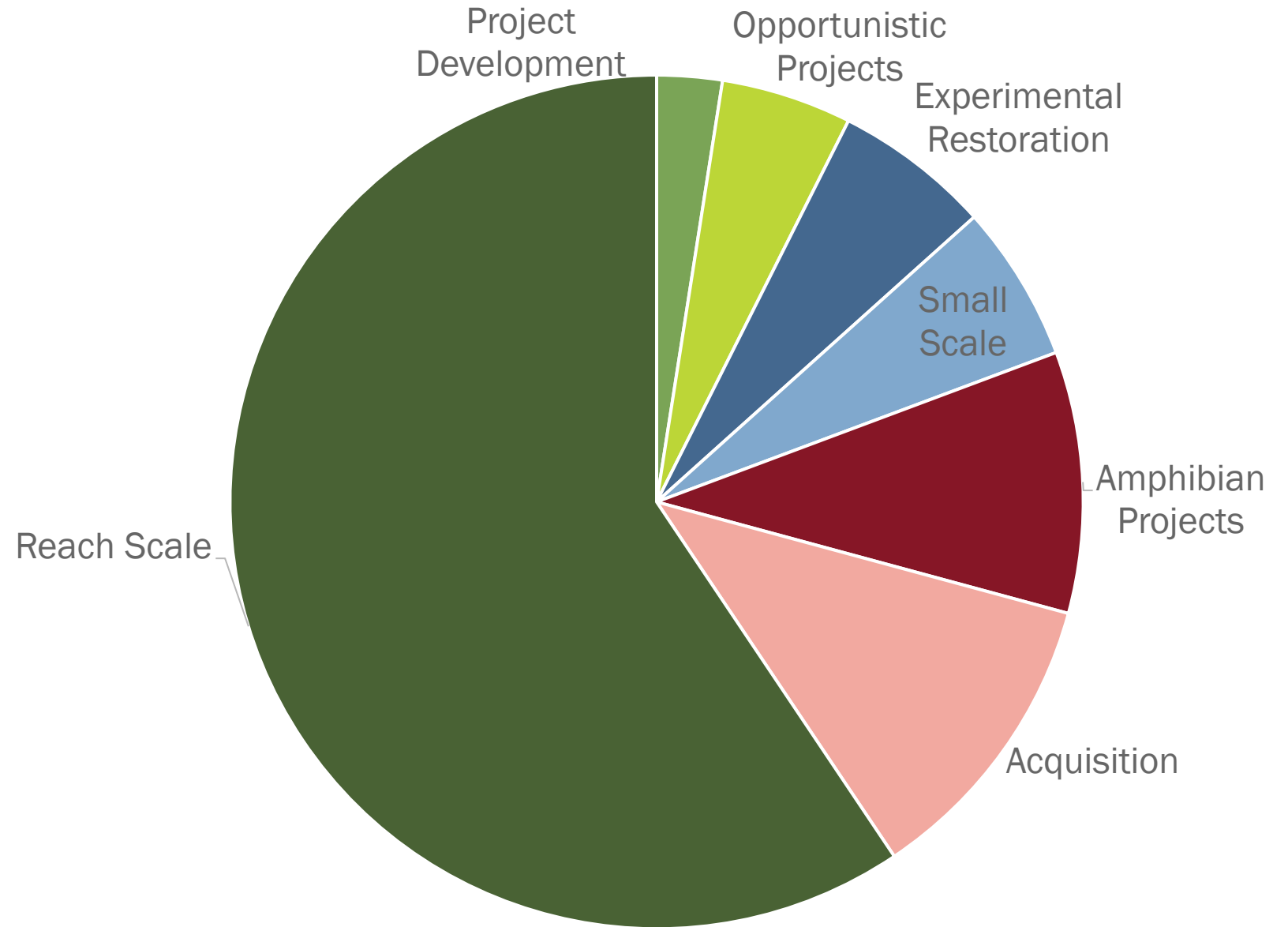
\$1.0M



Flickr: Damien Gadal

## 21-23 Project Expenditure Guidelines

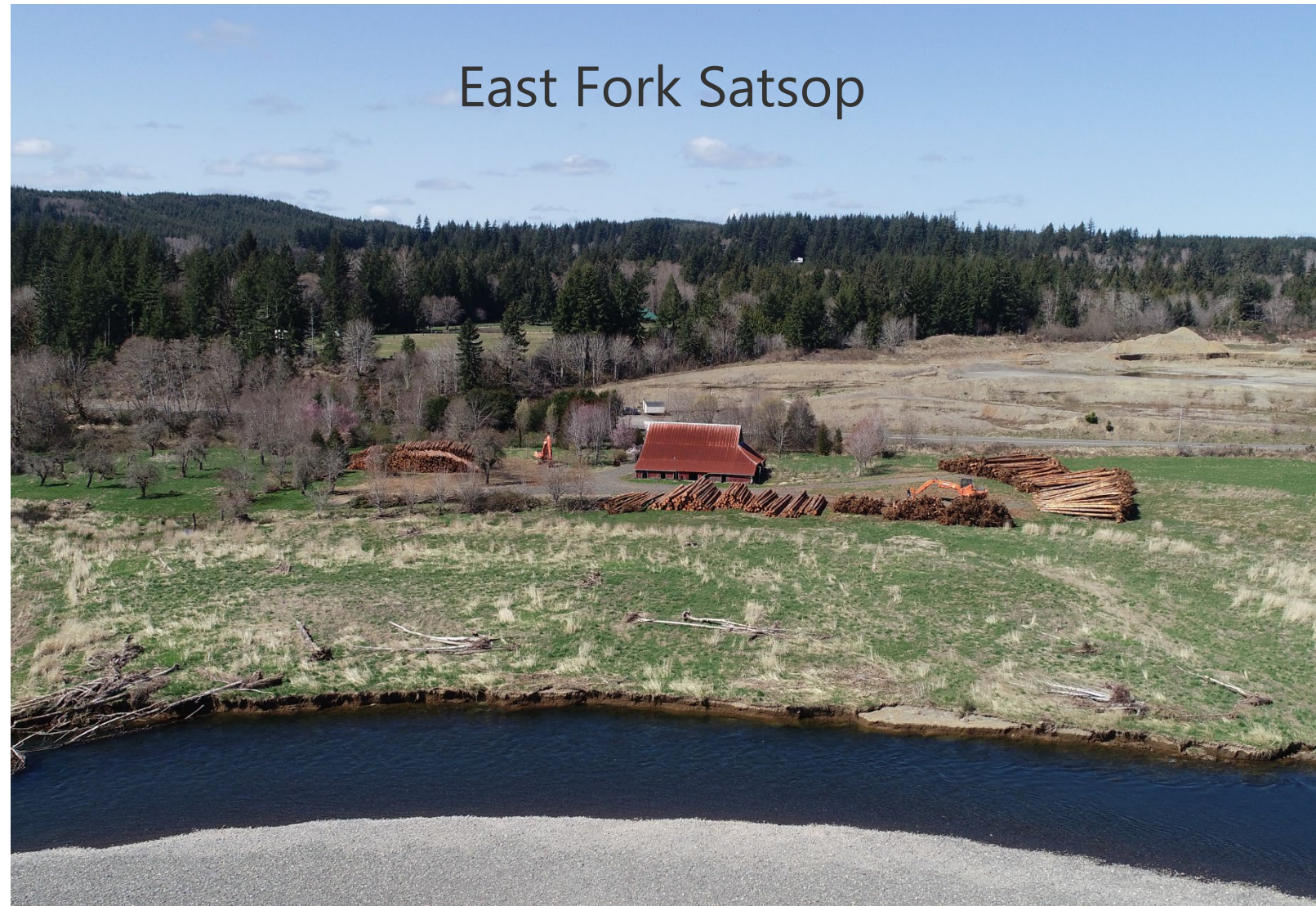
PROJECTS  
\$20.5M





# WHY SO MUCH FOR REACH SCALE PROJECTS?

- Combine many activities
- Multiple landowners
- They're really, really big
- Lots of benefit

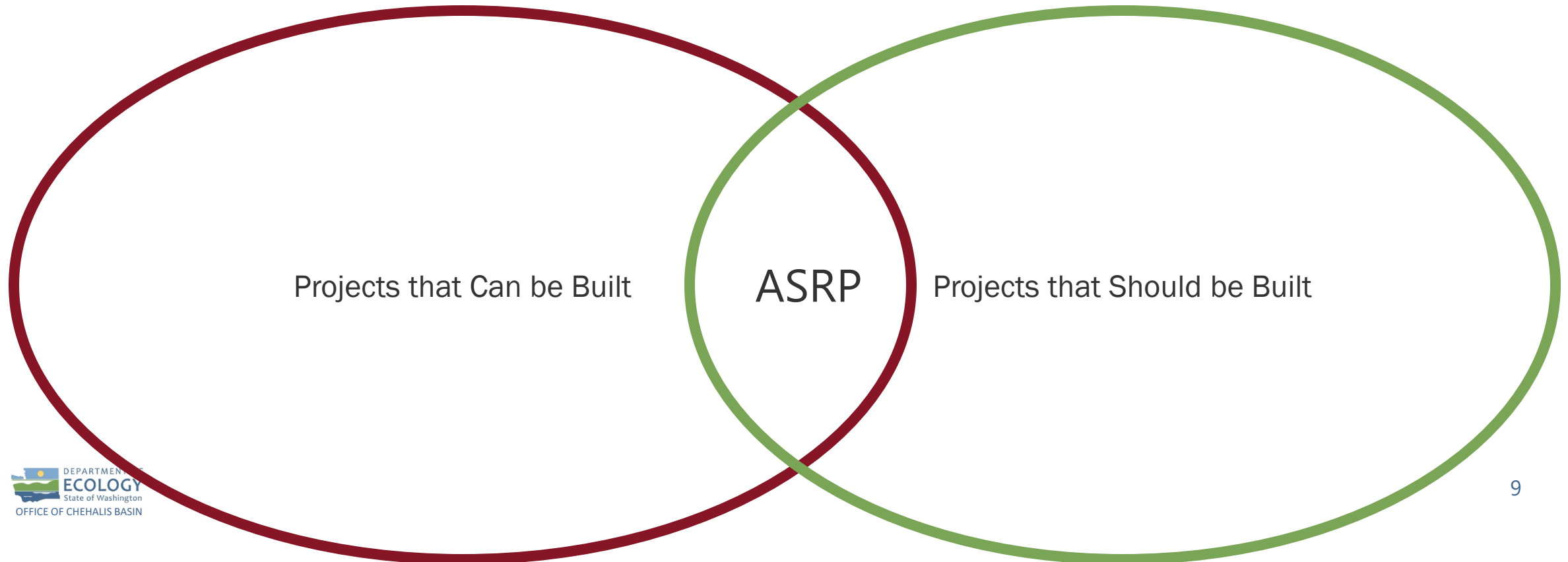




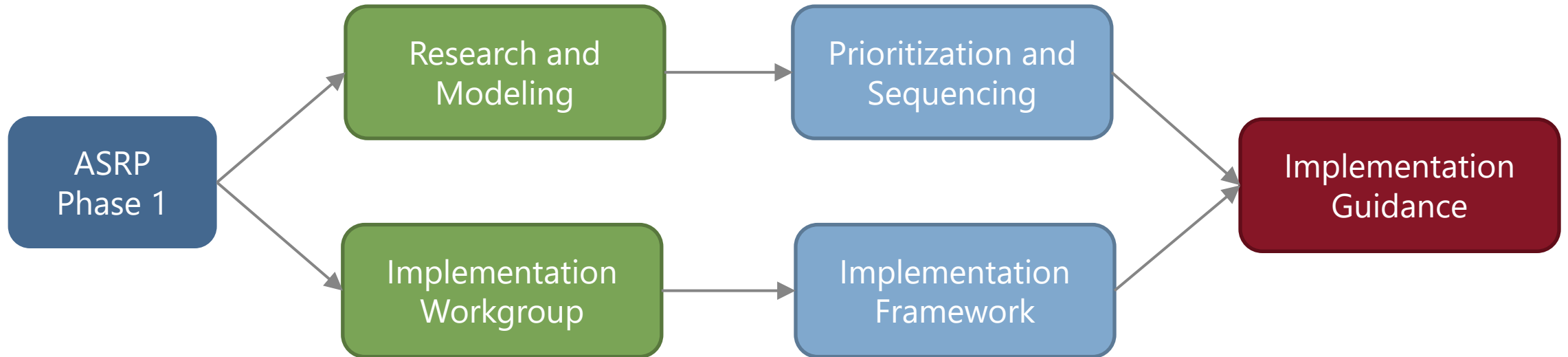
# WHAT PROJECTS DO WE FUND?

## Science-Based Project Selection

~~Random Acts of Conservation~~



# HOW DO WE BUILD PROJECTS?

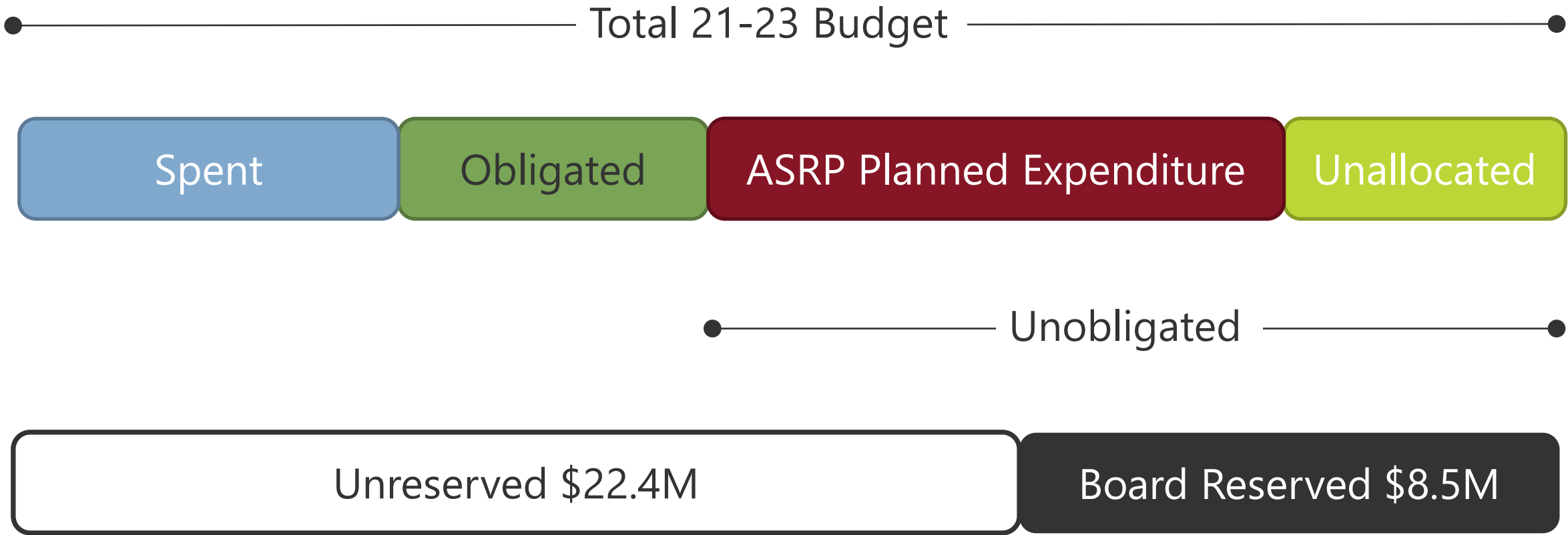




# HOW ASRP PROJECTS ARE FUNDED

- Project funding is reserved from the biennium in which they start
- Large projects can extend over multiple biennia
- Funding is earmarked for all phases – design, permitting, acquisition, construction

# ASRP 21-23 BUDGET STRUCTURE





# REAPPROPRIATION

Some of the \$20.4M in Project funding will not be spent by June 2023

BUT

All of the reappropriation will be *earmarked for specific projects* by the end of the Biennium

# WHY PLANNED EXPENDITURE?

Implementation Planning process:

- Landowner and Sponsor Confidence
- Speed of Project Implementation



# BUDGET ITEM OBJECTIVES

- \$20.40M Projects: Save Critters
- \$ 0.80M Materials Sourcing: Faster, cheaper projects
- \$ 4.50M Monitoring and Adaptive Management: Adjust Implementation
- \$ 0.96M Project Support: Keep Projects On Track
- \$ 3.32M Participation: Policy and Technical Guidance, Local Perspectives
- \$ 0.89M RCO: Manage Contracts and Billing

# QUESTIONS OR DISCUSSION







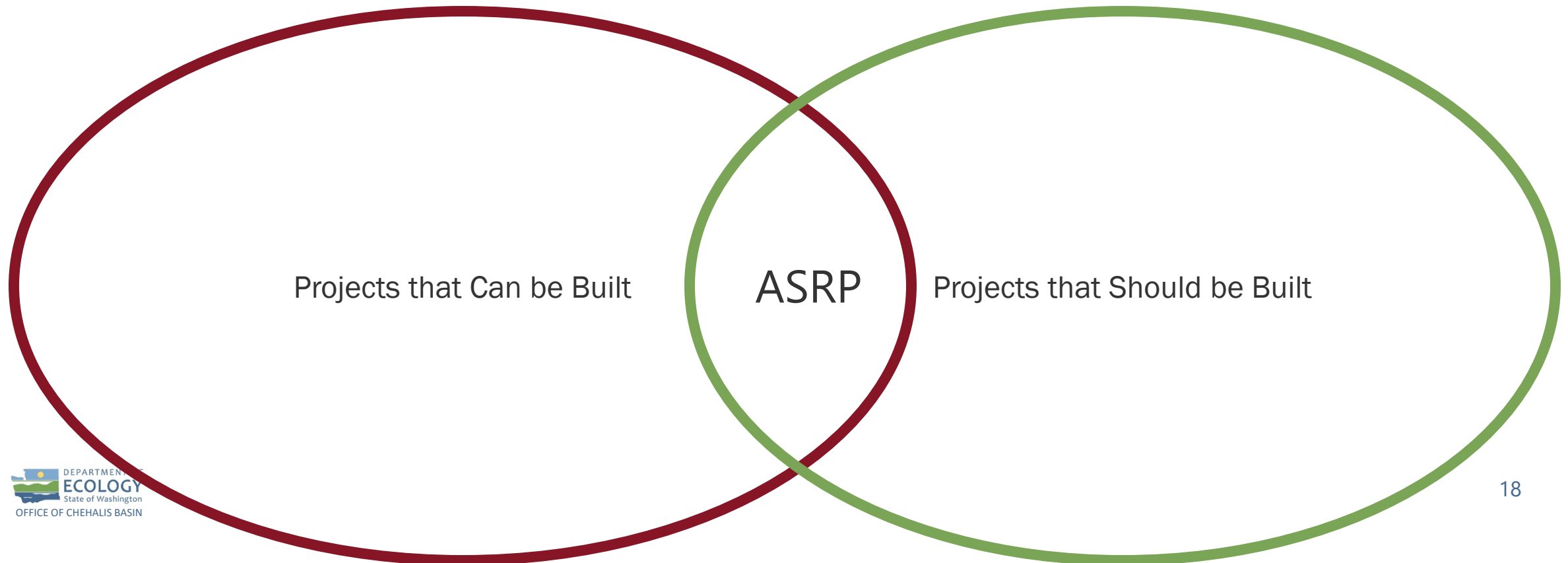
# 2021–2023 ASRP PROJECT PRIORITIES



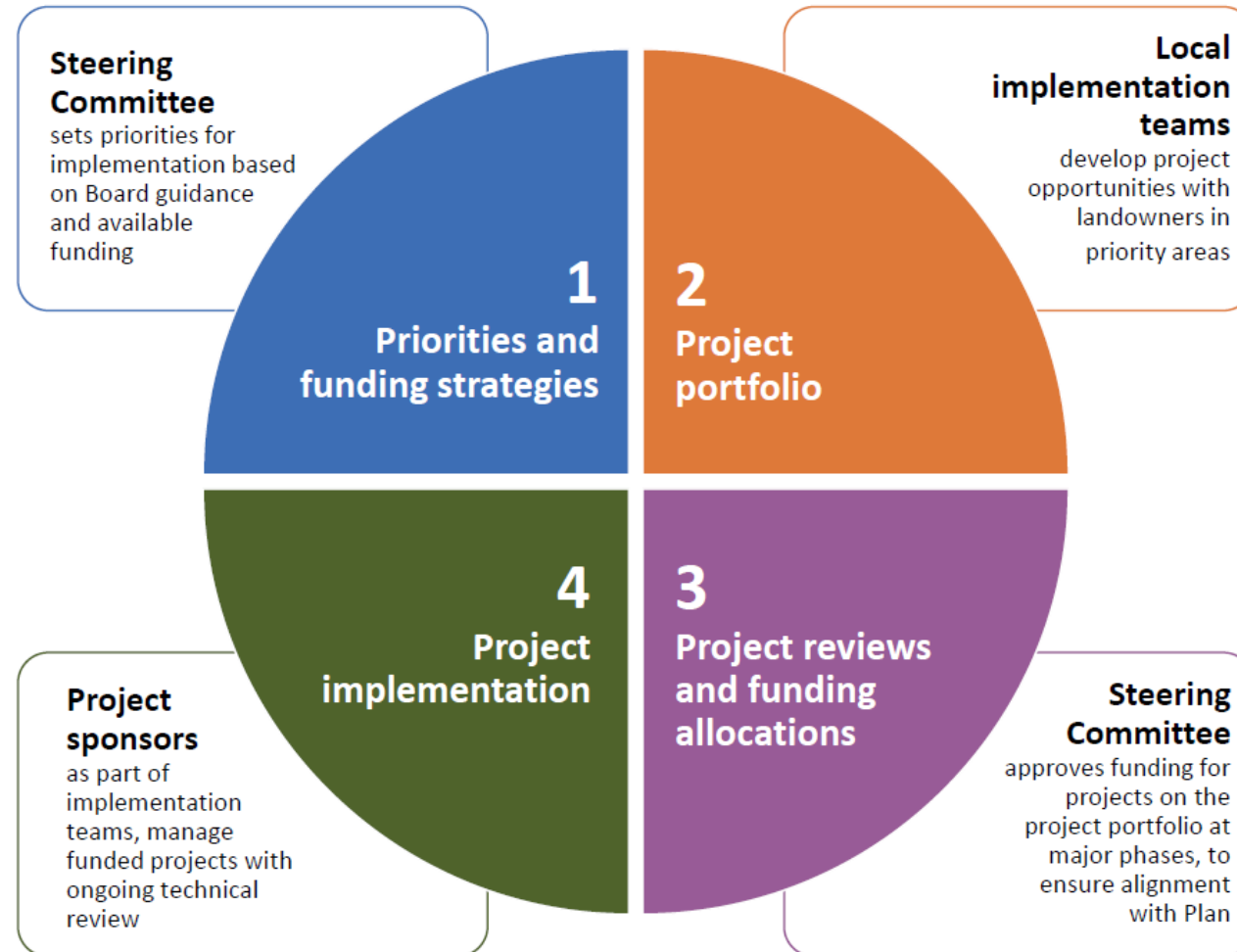
# WHAT PROJECTS DO WE FUND?

## Science-Based Project Selection

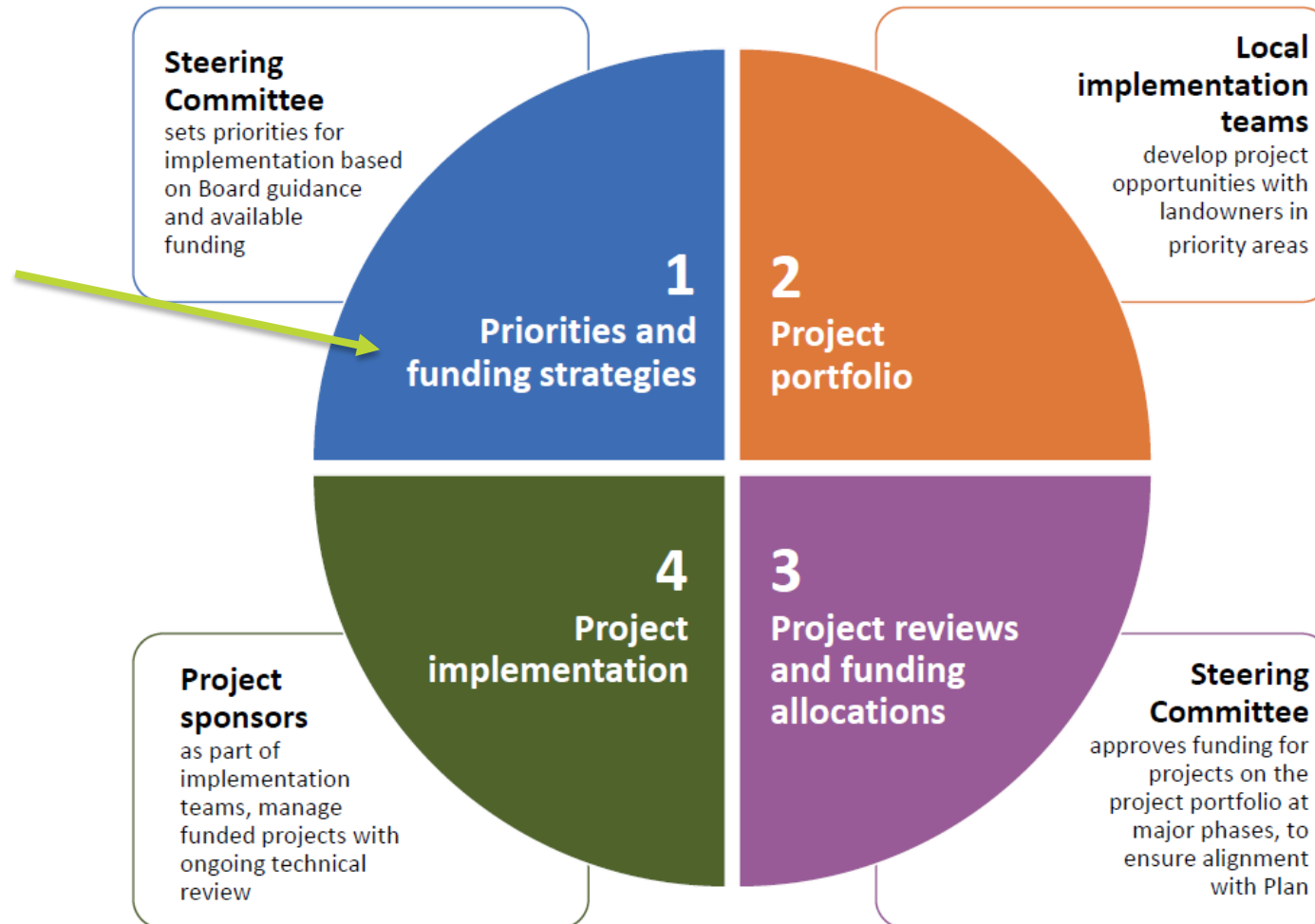
~~Random Acts of Conservation~~



# HOW DO WE FUND THOSE PRIORITY PROJECTS?



# HOW DO WE FUND THOSE PRIORITY PROJECTS?

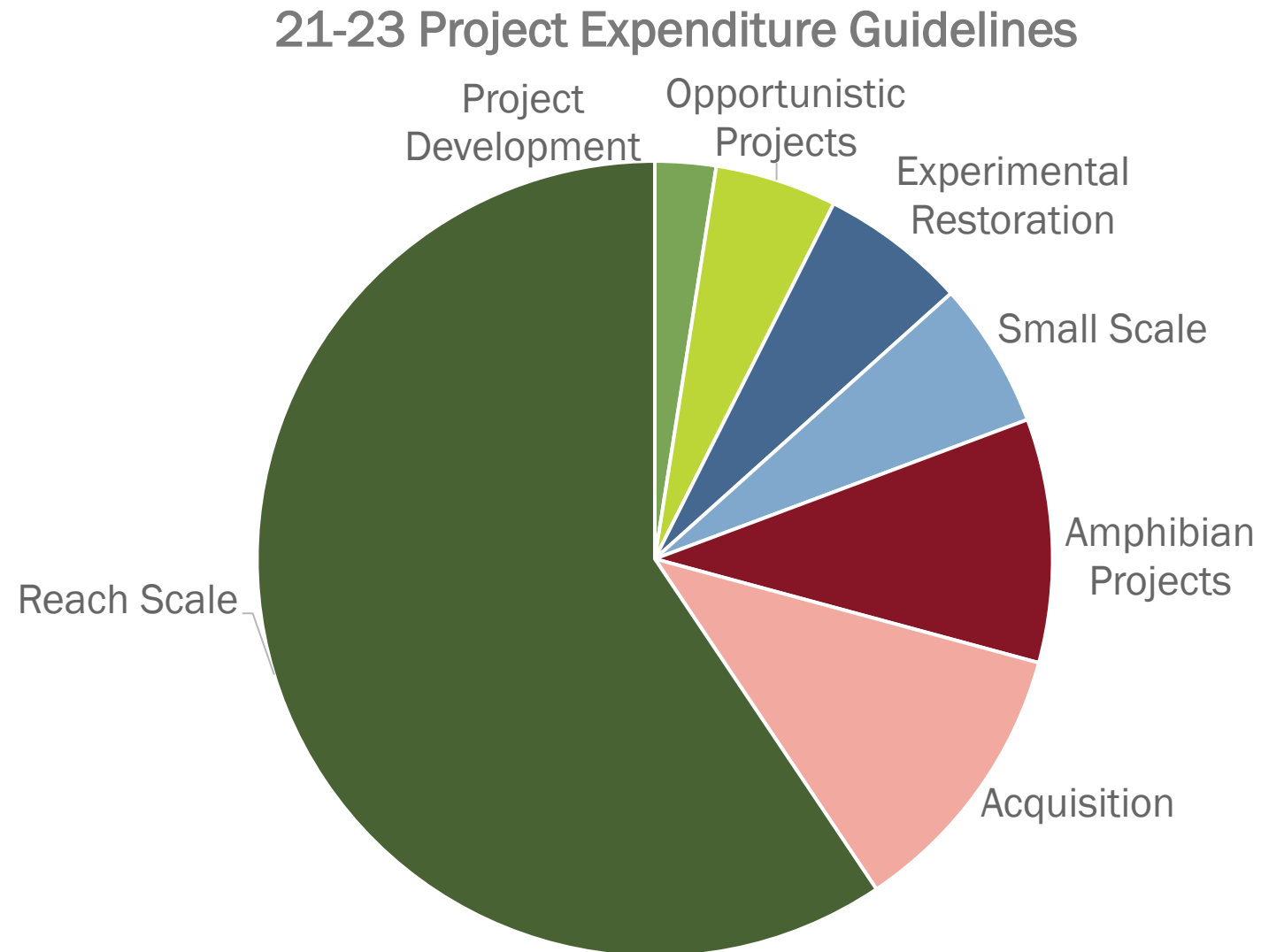


# 21-23 PRIORITIES AND FUNDING GUIDANCE

- Steering Committee:
  - Identifies priority areas and actions to focus funding at the beginning of each biennium
  - Sets relative emphasis of funding expenditures within projects budget
- Board:
  - Sets biennial program budget
  - Approves funding allocations



# 21-23 PRIORITIES AND FUNDING GUIDANCE



# 21-23 PRIORITIES AND FUNDING GUIDANCE

NEAR-TERM ASRP PRIORITY AREAS AND ACTIONS

Ecological Region	Geospatial Unit	Restoration Actions						Geospatial Unit Information					Priority Species or Habitat Focus	Limiting Factors From Highest Priority to Lowest
		Place Large Wood	Remove Fish Barriers	Reconnect/Restore Floodplain	Riparian Restoration	Beaver Ponds/B&Ds	Wetland Restoration	Acres of O&P Habitat Protected/Restoration	Number of Priority Barriers	Length of Primary River (mi)	Percent of Primary River Length Proposed for Restoration	Proposed Protection/Restoration (mi)		
Grays Harbor Tributaries	Modoc-Humphreys MS GSU	●	●	●	●			0	22.8	50%	11	● High Priority Core Habitats ● Early Riparian Restoration	Key Habitat, Temperature, Sediment Load, Habitat Diversity, Flow, Channel Length, Channel Stability, Precipitation	
	Lower Settee MS GSU	●		●	●			0	6.6	50%	3	● High Priority Core Habitats ● Early Riparian Restoration	Key Habitat, Temperature, Habitat Diversity, Channel Length, Channel Stability, Precipitation, Flow, Sediment Load	
	Lower El Settee MS GSU	●		●	●			0	11.4	50%	6	● High Priority Core Habitats ● Early Riparian Restoration	Temperature, Key Habitat, Habitat Diversity, Precipitation, Channel Stability, Flow, Sediment Load	
	Decker GSU	●	●	●	○	●		0	15.8	50%	8	● Unique At Risk Habitat (protection)	Key Habitat, Temperature, Habitat Diversity, Obstructions/Barriers, Sediment Load, Precipitation, Channel Stability, Flow, Channel Length	
Olympic Mountains	Bingham GSU	●	●	●	○	●		3	13.8	50%	7	● Unique At Risk Habitat (protection)	Obstructions/Barriers, Key Habitat, Habitat Diversity, Channel Stability, Sediment Load, Precipitation, Flow, Temperature, Channel Length	
	Dry Run GSU	●			○	●		5	5	50%	3	● Unique At Risk Habitat (protection)	Obstructions/Barriers, Key Habitat, Channel Stability, Habitat Diversity, Sediment Load, Flow, Temperature, Precipitation, Channel Length	
	Upper El Settee MS GSU	●	●	●	○			3	8.4	75%	6	● Unique At Risk Habitat (protection)	Obstructions/Barriers, Key Habitat, Temperature, Precipitation, Habitat Diversity, Sediment Load, Channel Stability, Flow, Channel Length	
	Middle Wynoochee MS GSU	●	●	●	●	●		2	79.4	50%	15	● High Priority Core Habitats	Key Habitat, Obstructions/Barriers, Temperature, Habitat Diversity, Precipitation, Sediment Load, Flow, Channel Stability, Channel Length	
	Middle Wynoochee Trill GSU (Wendover and Main Creeks)	●	●	●	●	●		8	8	50%	4	● High Priority Core Habitats	Obstructions/Barriers, Sediment Load, Habitat Diversity, Channel Stability, Temperature, Flow, Key Habitat, Precipitation, Channel Length	
Black Hills	Coquille MS GSU	●	●	●	●			14	70.4	50%	10	● High Priority Core Habitats	Obstructions/Barriers, Temperature, Key Habitat, Precipitation, Habitat Diversity, Sediment Load, Channel Stability, Flow, Channel Length	
Black River	Scatter GSU	●	●	●	●			0	22.6	33%	7	● High Priority Core Habitats ● Early Riparian Restoration	Temperature, Key Habitat, Habitat Diversity, Precipitation, Channel Stability, Sediment Load, Flow, Obstructions/Barriers, Channel Length	
	Beaver GSU	●	●	●	●			19	5	11.4	50%	6	● High Priority Core Habitats ● Early Riparian Restoration ● Oregon Spotted Frog	Key Habitat, Obstructions/Barriers, Sediment Load, Habitat Diversity, Temperature, Precipitation, Channel Stability, Flow, Channel Length
	Lower Skokholm MS GSU	●	●	●	●			0	22.2	75%	17	● Early Riparian Restoration ● Spring Chinook	Channel Length, Temperature, Key Habitat, Habitat Diversity, Precipitation, Sediment Load, Channel Stability, Flow	
Cascade Mountains	Lower Wenatchee MS GSU	●	●	●	●			0	12.3	75%	8	● Early Riparian Restoration ● Spring Chinook	Temperature, Habitat Diversity, Channel Length, Key Habitat, Sediment Load, Precipitation, Channel Stability, Flow	
	St Helens MS GSU	●	●	●	●			0	22	75%	17	● Early Riparian Restoration ● Spring Chinook	Habitat Diversity, Temperature, Key Habitat, Channel Stability, Flow, Sediment Load, Precipitation	
	N.F. Rowan MS GSU	●	●	●	●			0	20	75%	15	● Early Riparian Restoration ● Spring Chinook	Temperature, Habitat Diversity, Key Habitat, Channel Stability, Precipitation, Sediment Load, Flow, Channel Length	

● High Priority

● Medium Priority

● Low Priority

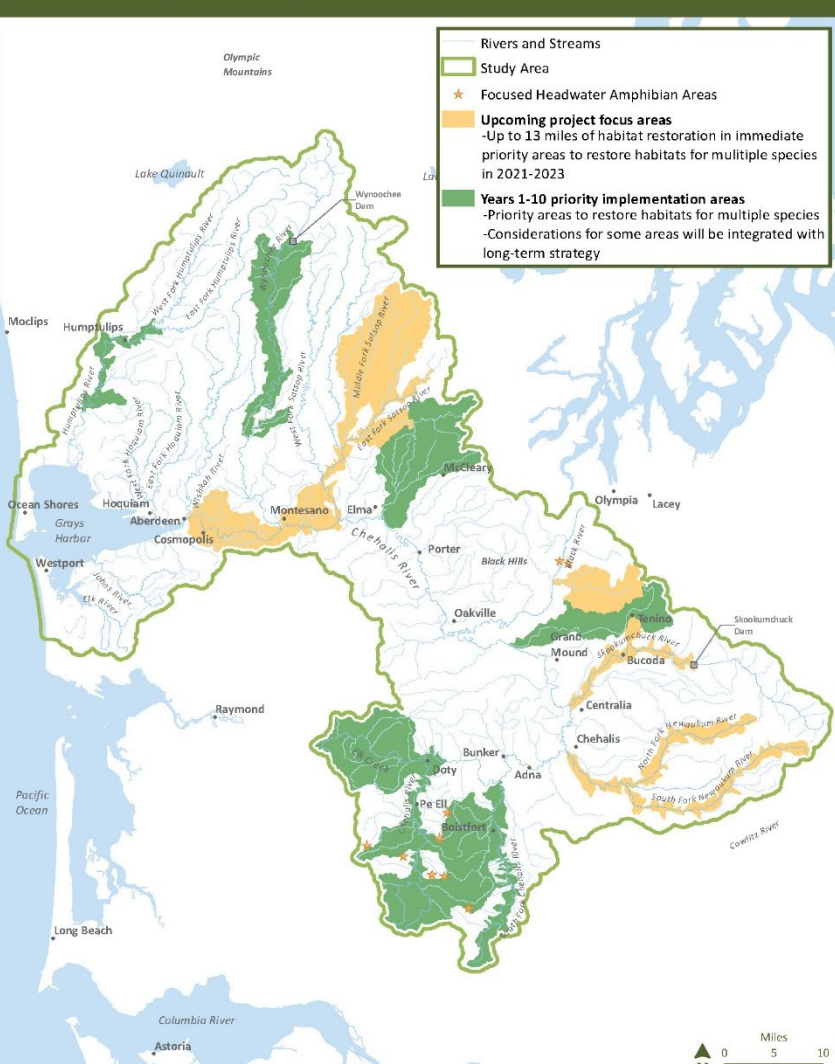
○ Restoration is supplemental as needed (GSU is a primarily managed forest with protected stream)

\*Oregon Spotted Frog

● High Priority ● Medium Priority ● Low Priority ○ Restoration is supplemental or needed GSU is primarily managed for riparian protection

\*Oregon Spotted Frog

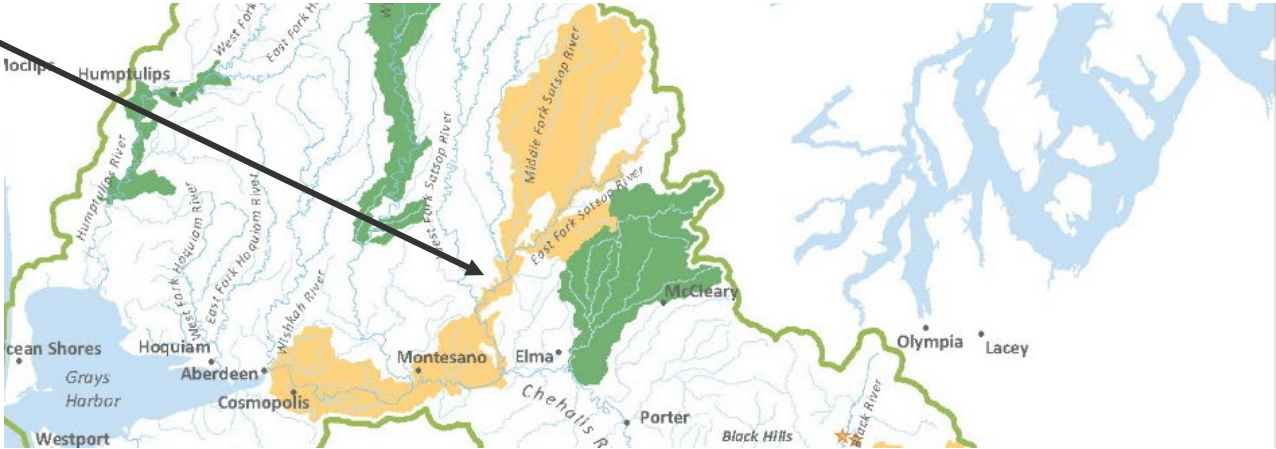
Years 1–10 Near-Term ASRP Priorities for Implementation



# 21-23 PRIORITIES AND FUNDING GUIDANCE

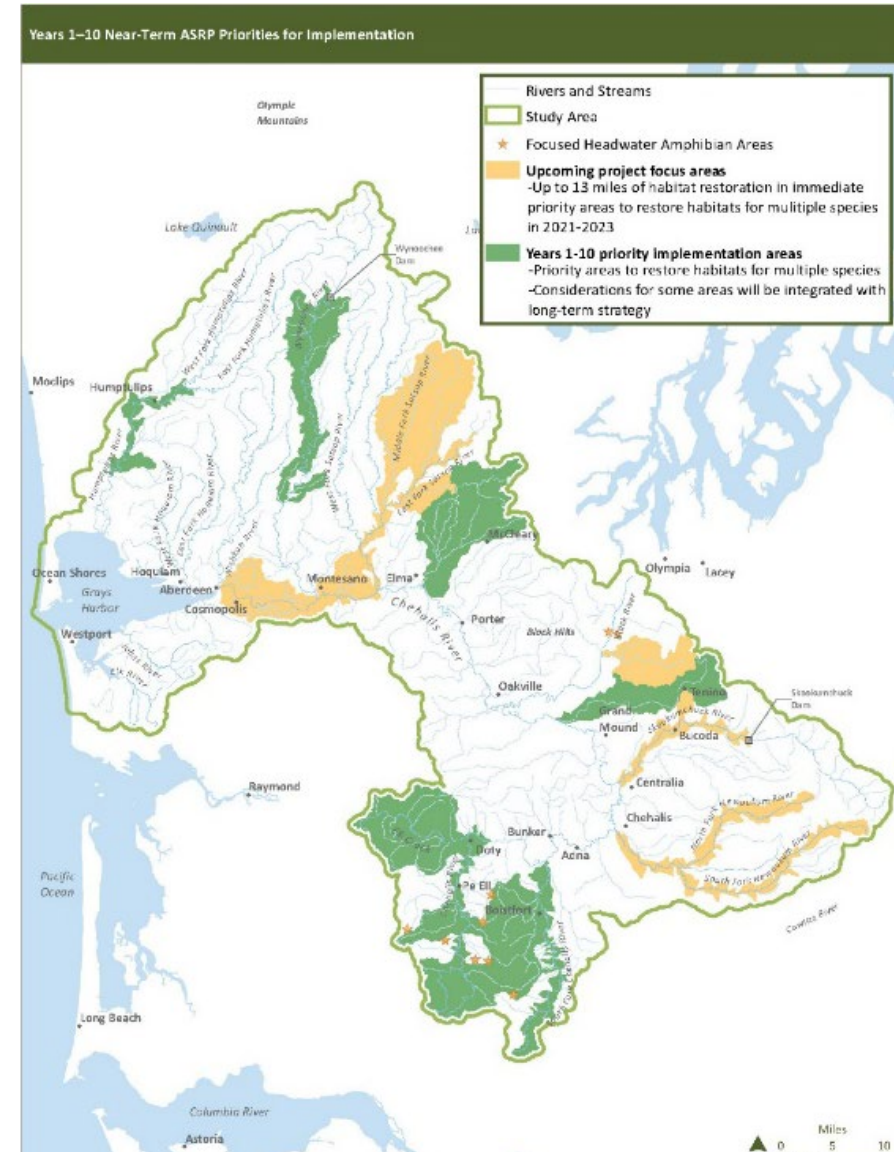
## NEAR-TERM ASRP PRIORITY AREAS AND ACTIONS

Ecological Region	Geospatial Unit	Restoration Actions							Geospatial Unit Information				Priority Species or Habitat Focus	Limiting Factors From Highest Priority to Lowest
		Place Large Wood	Remove Fish Barriers	Reconnect/Restore Floodplain	Riparian Restoration	Beaver Ponds/BDAs	Wetland Restoration	Acres of OSF* Habitat Protection/Restoration	Number of Priority Barriers	Length of Primary River (miles)	Percent of Primary River Length Proposed for Restoration	Proposed Protection/Restoration (miles)		
Grays Harbor Tributaries	Lower Satsop MS GSU	<div></div>	<div></div>	<div></div>	<div></div>	<div></div>	<div></div>	<div></div>	0	6.6	50%	3	High Priority Core Habitats Early Riparian Restoration	Key Habitat, Temperature, Habitat Diversity, Channel Length, Channel Stability, Predation, Flow, Sediment Load



# 21-23 PRIORITIES AND FUNDING GUIDANCE

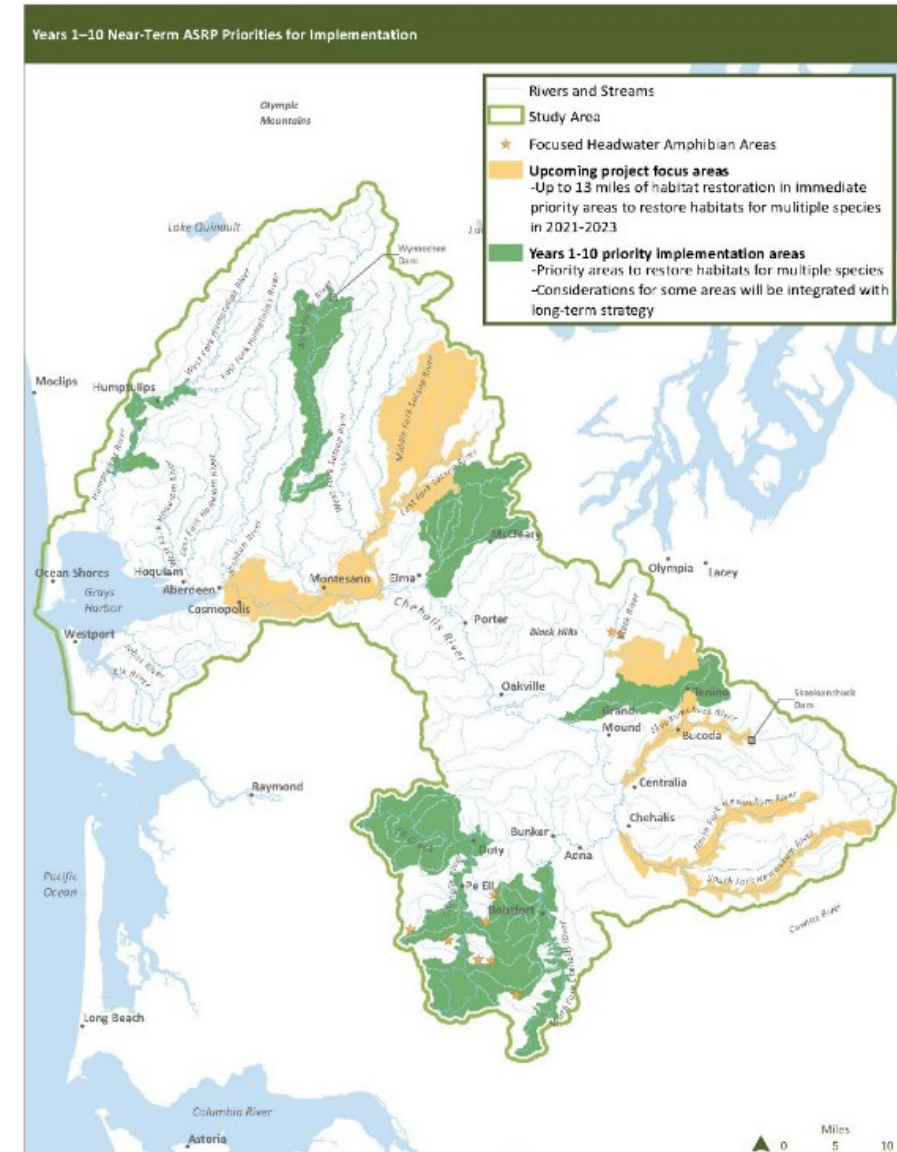
- Reach Scale:
  - Lower Satsop
  - Lower Skookumchuck
  - Lower Newaukum
- Barrier corrections:
  - Dry Run Creek
  - Bingham Creek
  - Cloquallum Creek





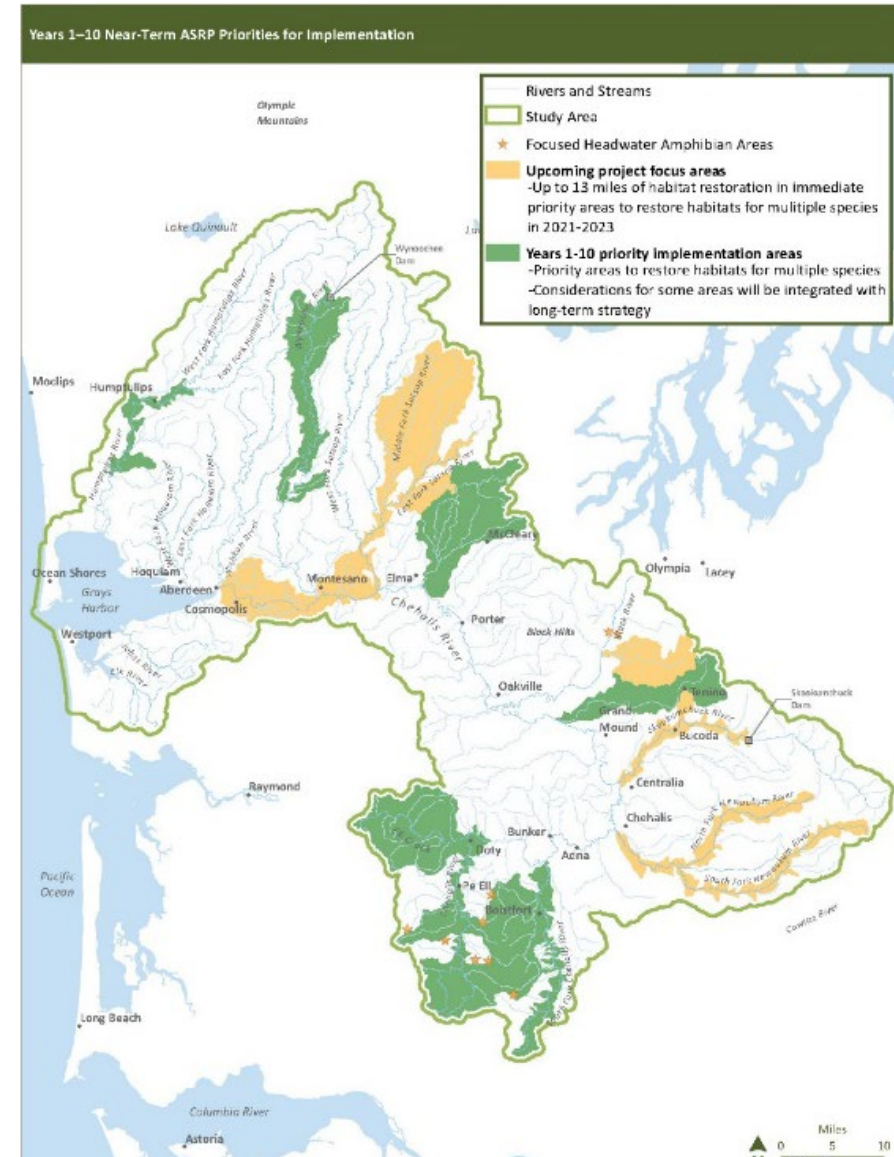
# 21-23 PRIORITIES AND FUNDING GUIDANCE

- Amphibian focused:
  - Beaver Creek
  - Rock Creek
  - Roger Creek
- Protection:
  - Bingham Creek
  - Beaver Creek
  - Decker Creek
  - Upper EF Satsop

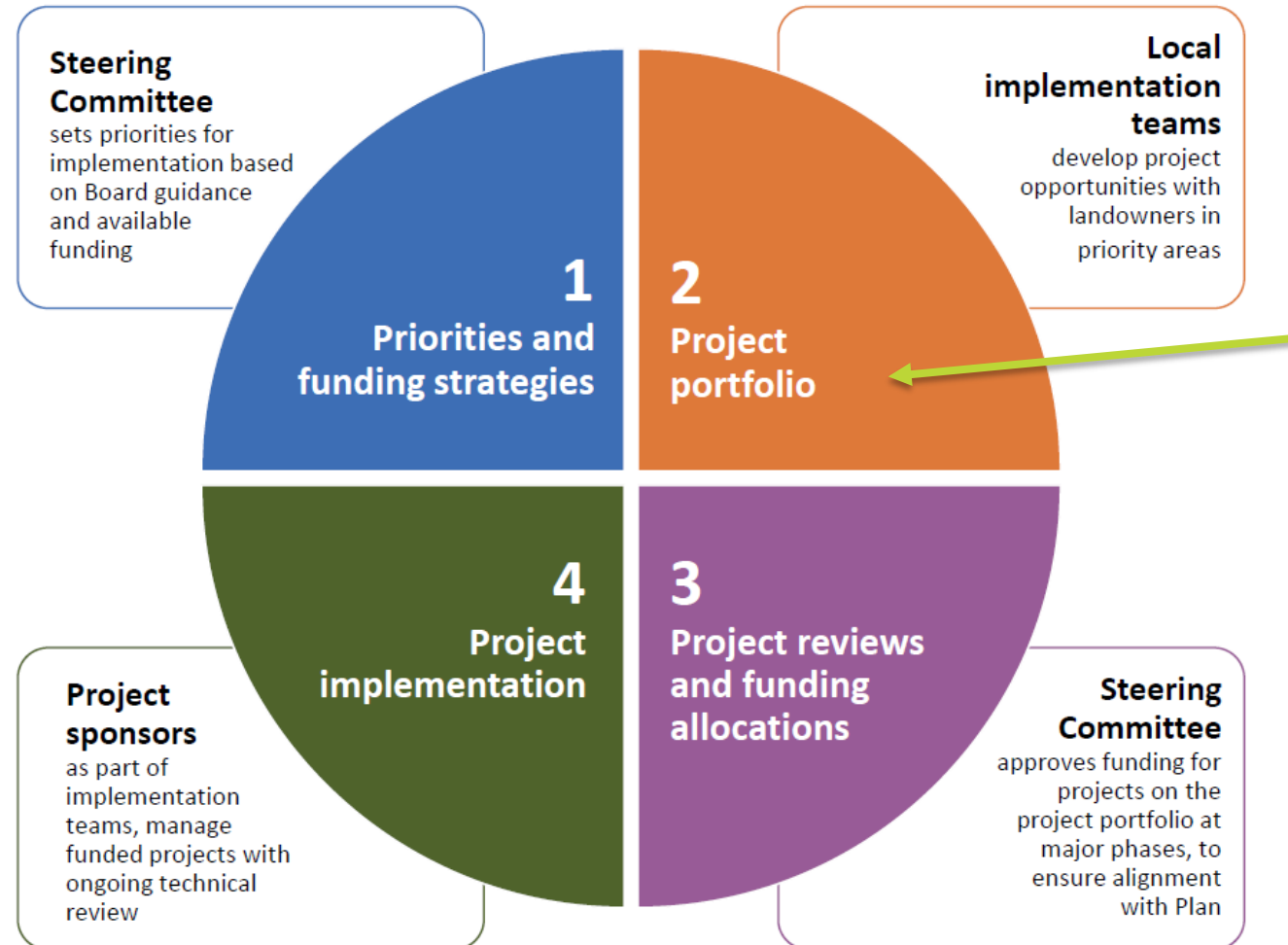


## 21-23 PRIORITIES AND FUNDING GUIDANCE

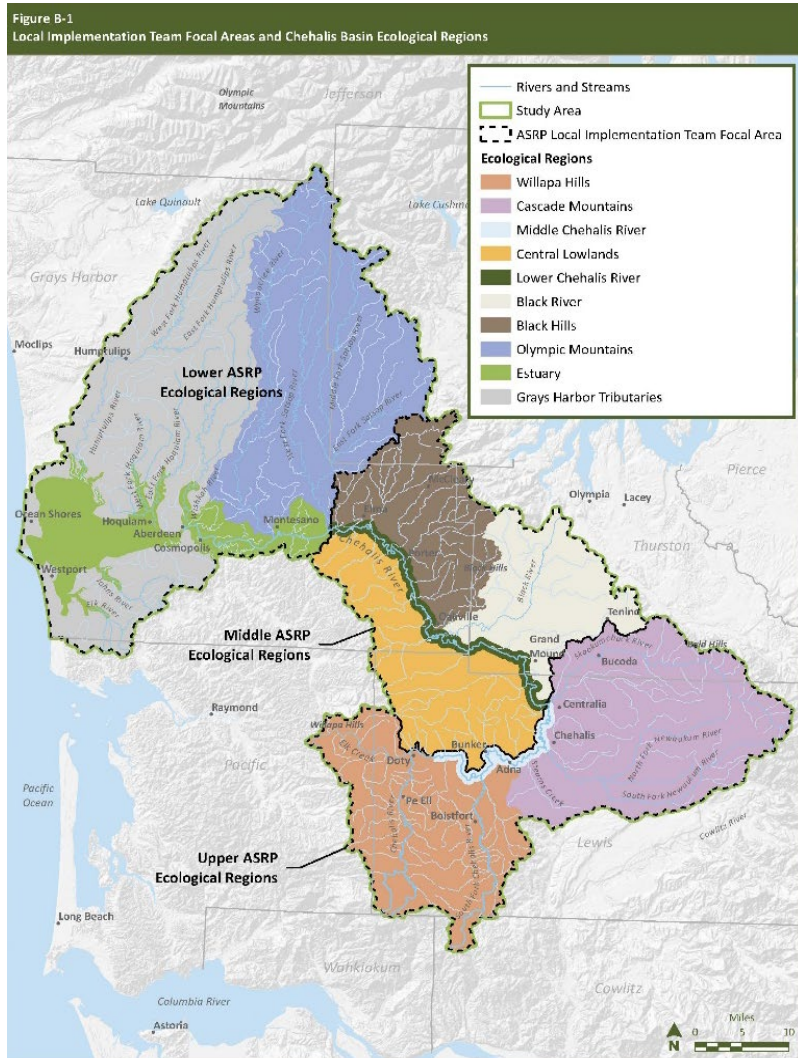
- Experimental restoration:
  - Upper SF Chehalis
  - Lower SF Chehalis
- Project development (for next biennium projects):
  - All near-term priority areas and actions



# HOW DO WE FUND PRIORITY PROJECTS?



# IMPLEMENTATION TEAMS



- 3 local implementation teams coordinate on project opportunities in their region
- Project sponsors eligible for funding through request for qualifications
  - Expected release October 5<sup>th</sup>

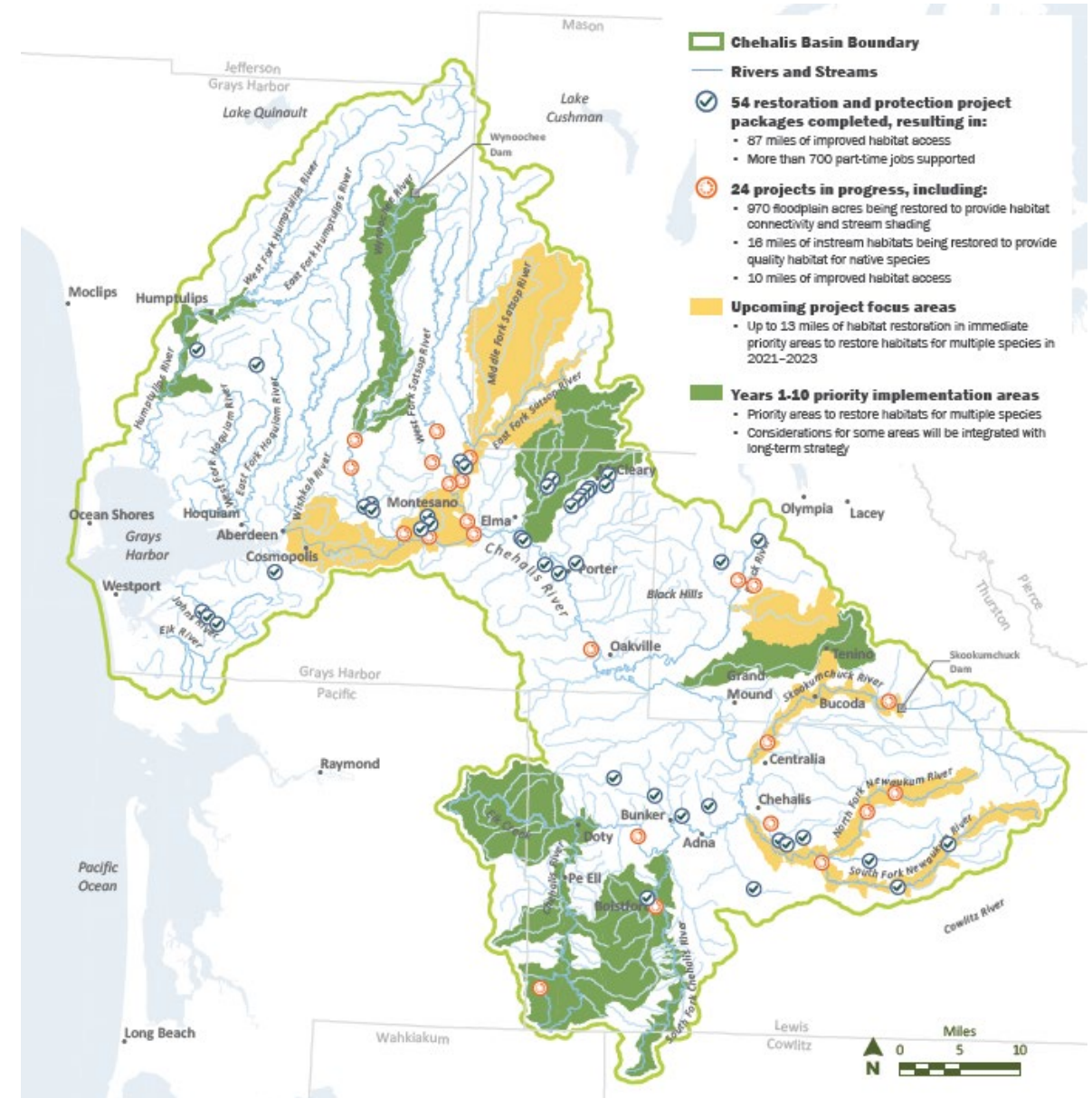


# PROJECT PORTFOLIO

- Once project opportunities developed and vetted, they are placed onto a Project Portfolio list
  - Funding reserved in budget for entire project, though only allocated to project contract in preset phases

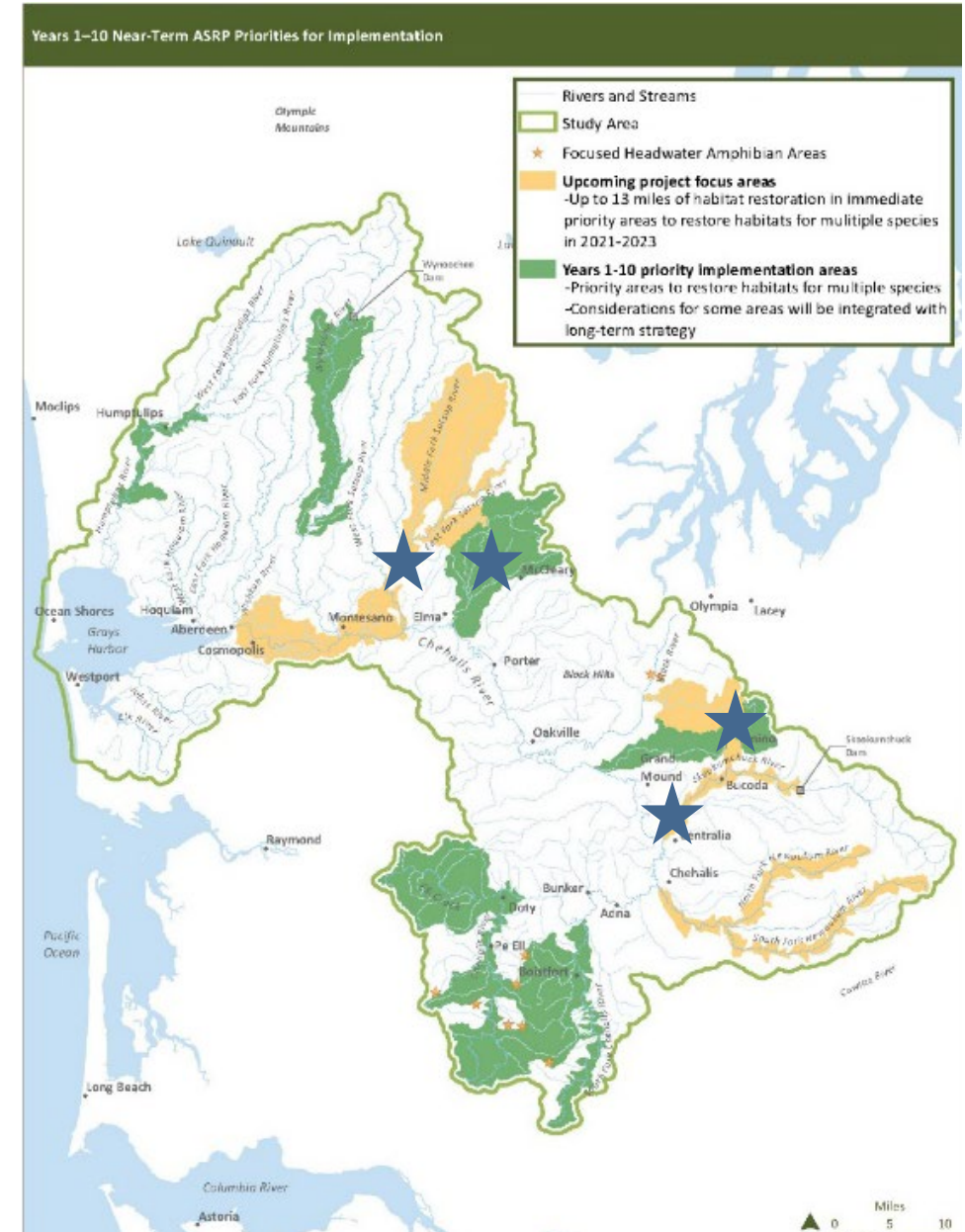
# PROJECT PORTFOLIO

- 10 active projects already in the portfolio



# PROJECT PORTFOLIO

- Already 15 project opportunities expected to be vetted for portfolio addition with 21-23 project funds



# COMMUNICATING WITH IMPLEMENTERS

- Two tracks for sharing information
  - Accessible online content
    - Implementation focused website updates – September 2021
  - Interactive webinars
    - Project implementation & funding information – September & October 2021



# QUESTIONS OR DISCUSSION

For more information, contact Emelie McKain  
[Emelie.McKain@dfw.wa.gov](mailto:Emelie.McKain@dfw.wa.gov)

