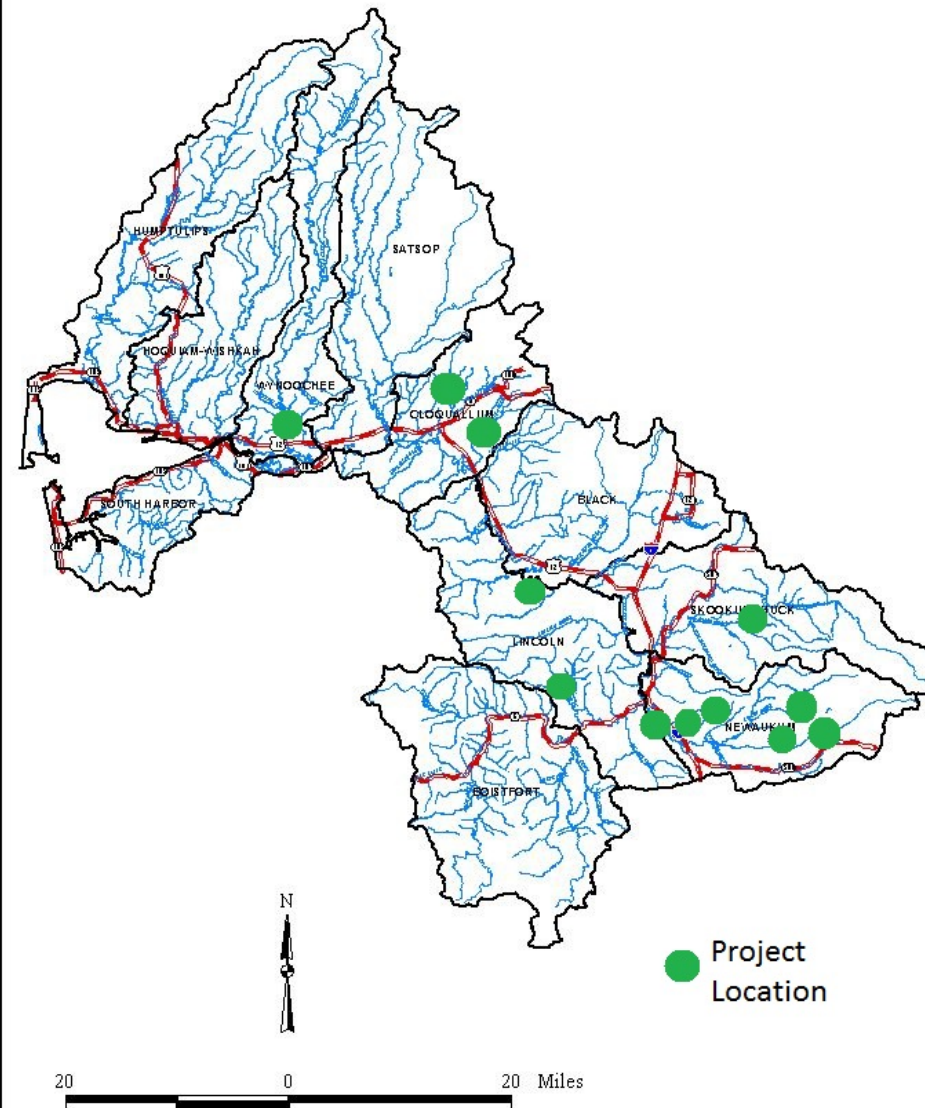


2018 ASRP Barrier Correction Projects

Near Term Projects to Implement the Aquatic
Species Restoration Plan, Chehalis Strategy

Presentation by Kirsten Harma
Chehalis Basin Lead Entity Coordinator

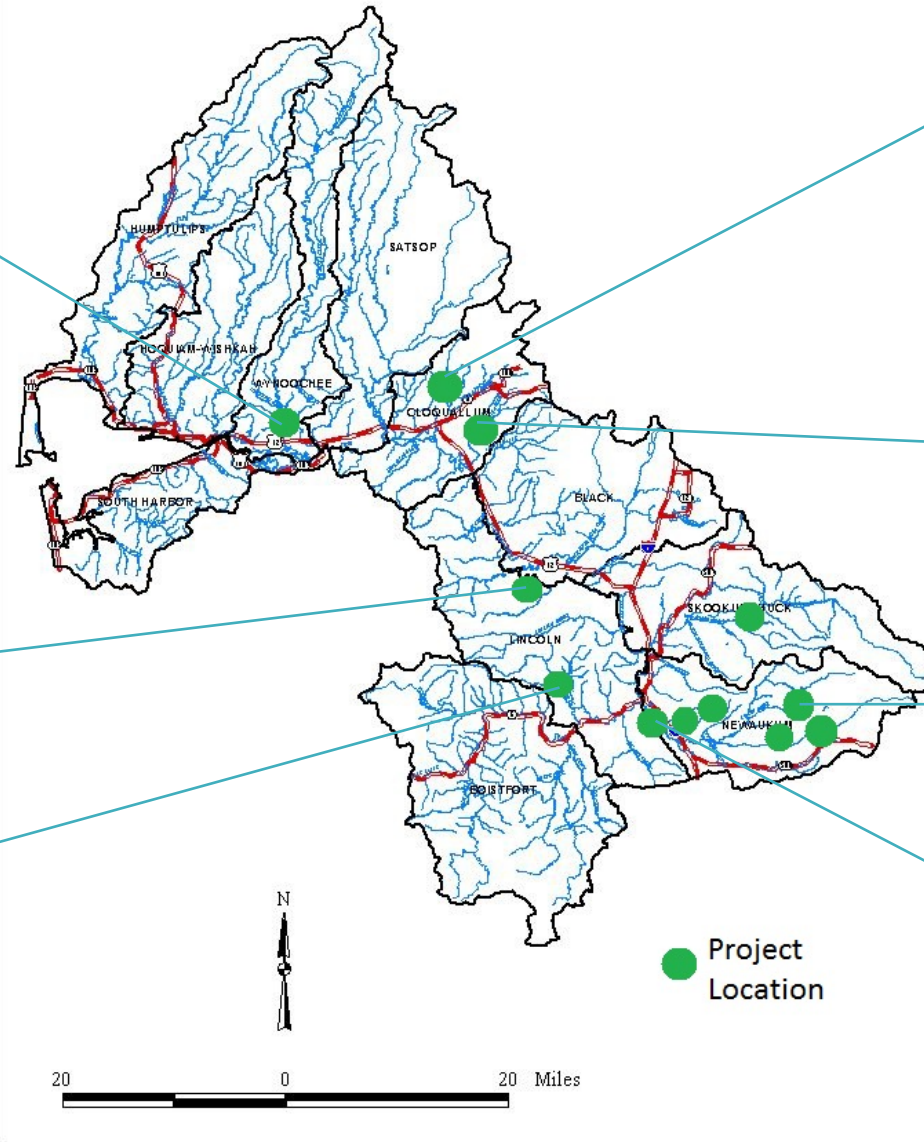
2017 ASRP Barrier Project Applications



Lead Entity Barrier Ranking

- Inventory took place in 2007
- 2,662 barriers included in evaluation
- Ranking formula created
- Accounts for:
 - Number of species that could use upstream habitat
 - Amount of habitat upstream (miles)
 - Severity of the barrier (passability)
- Is currently being updated

2017 ASRP Barrier Project Applications



EDT 20 %

3 % EDT

13 % EDT

EDT

1 % EDT

EDT 1 %

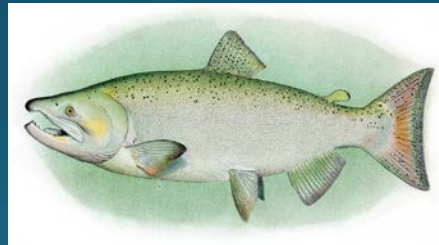
6 % EDT

2017 Ranking Criteria

- Critical Need
 - Species Benefiting
 - Limiting factors/watershed processes addressed
 - High priority areas
 - Life history stages benefiting
 - Passability & Upstream Gain
 - Synergy
 - Accounts for climate change science
- Project Readiness
- Ability to Implement
- Cost Effectiveness

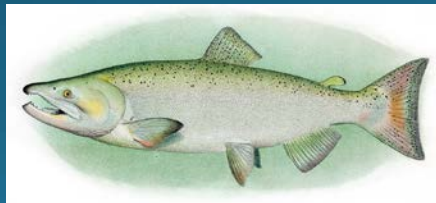
Funded Project Summary

- 11 barrier correction construction
- 3 barrier correction designs
- End result:
 - **32.5** miles fully accessible to fish use in good quality habitat, benefiting:



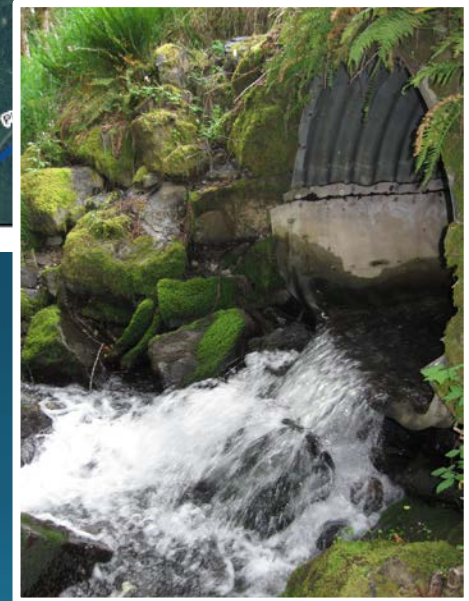
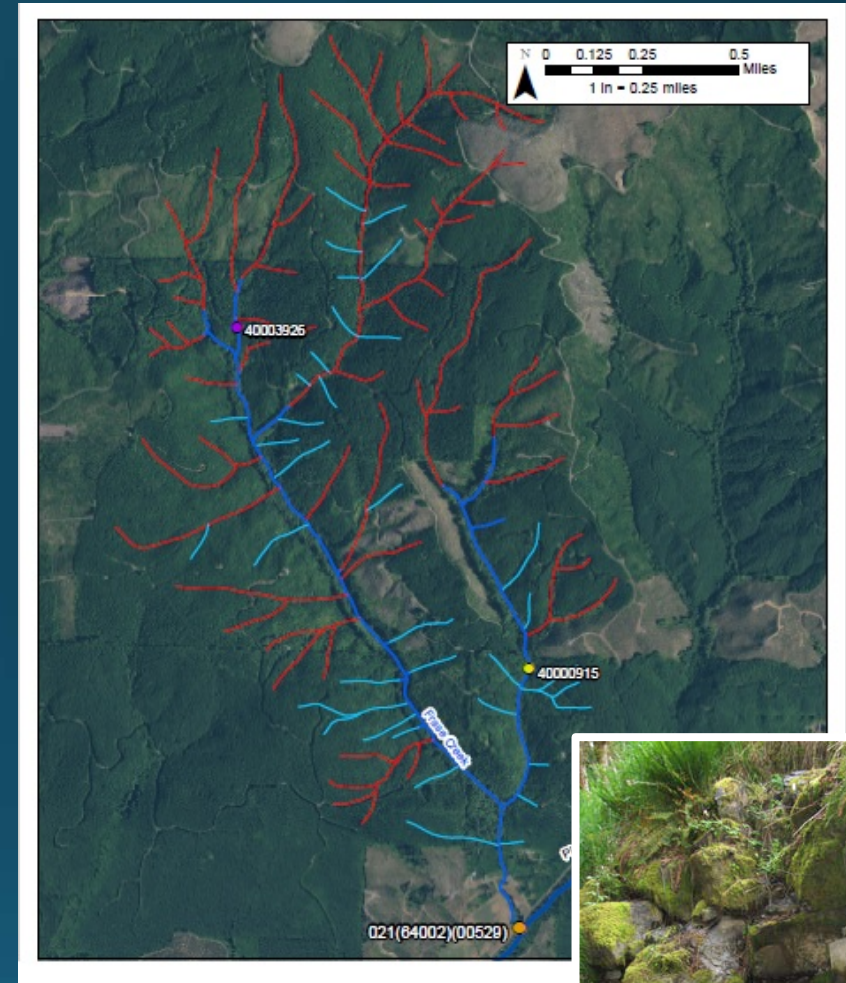
Sand Creek 5 Barriers

- Location: Cloquallum MU, Mox Chehalis, Sand Creek (near McCleary)
- Sponsor: Chehalis Basin Fisheries Task Force
- Summary: Construct 5 barrier corrections to improve fish passage to 5.51 miles habitat. Mostly forested upstream. Gravel substrate.
- Benefits: Coho, Cutthroat, Chum, Steelhead, Chinook



Frase Creek Barrier

- Location: Newaukum MU, South Fork Newaukum
- Sponsor: Lewis County
- Summary: Replace 0% passable culvert & channel realignment
- Benefits: Steelhead (Coho, Cutthroat), 3.55 miles opened to stream with highly (97%) forested riparian area.



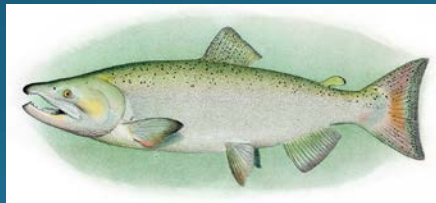
Bush Creek 3 Barrier Correction

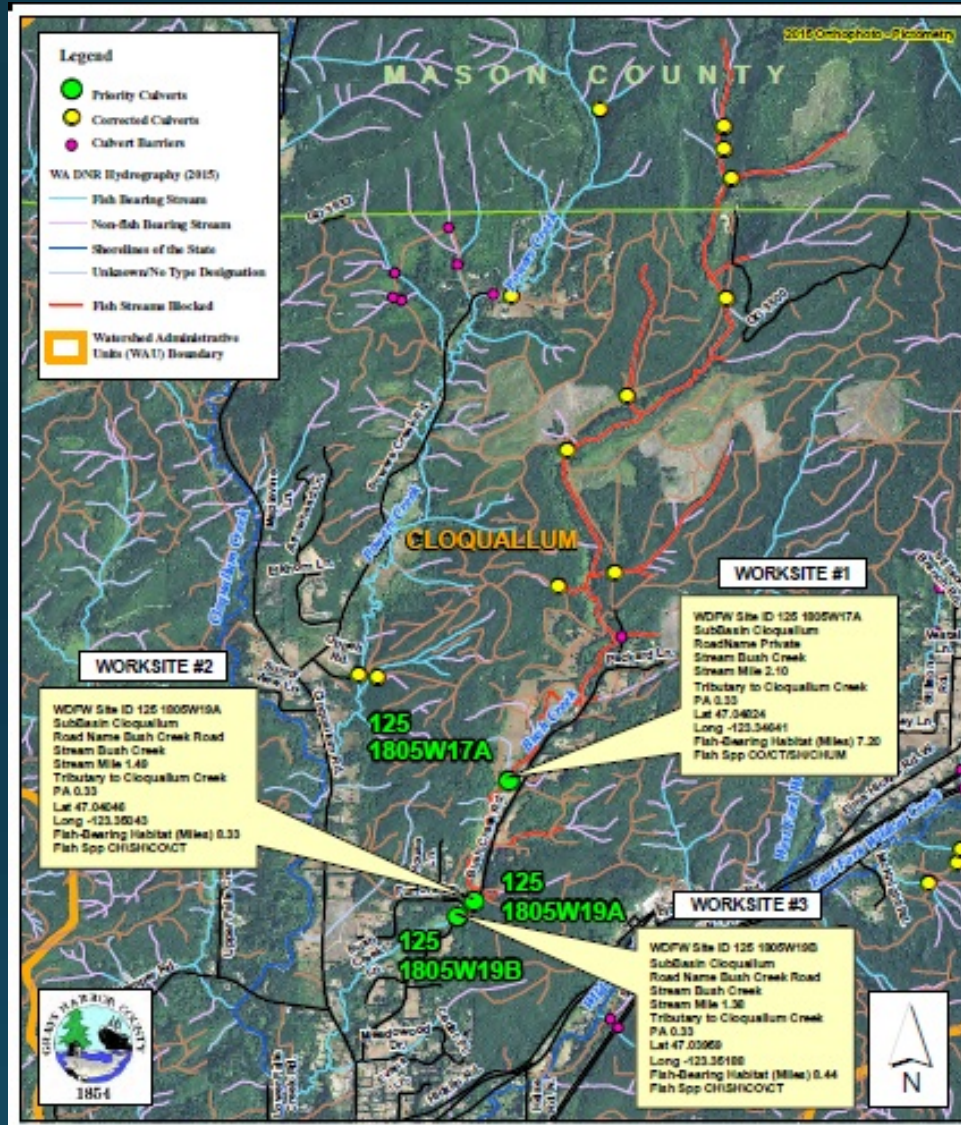
- Location: Cloquallum MU, Bush Creek (near Elma)
- Sponsor: Chehalis Basin Fisheries Task Force
- Summary: Construct to improve fish passage to 8.18 miles habitat. Last remaining barriers. Forested habitat in 81% of upstream basin.
- Benefits: Coho, Cutthroat, Chum, Steelhead, Chinook



Chehalis Basin FTF; Bush Creek Barrier Correction Design (#17-1184)

Attachment #302281, 19A outlet





Chehalis Basin FTF; Bush Creek Barrier Correction Design (#17-1184)

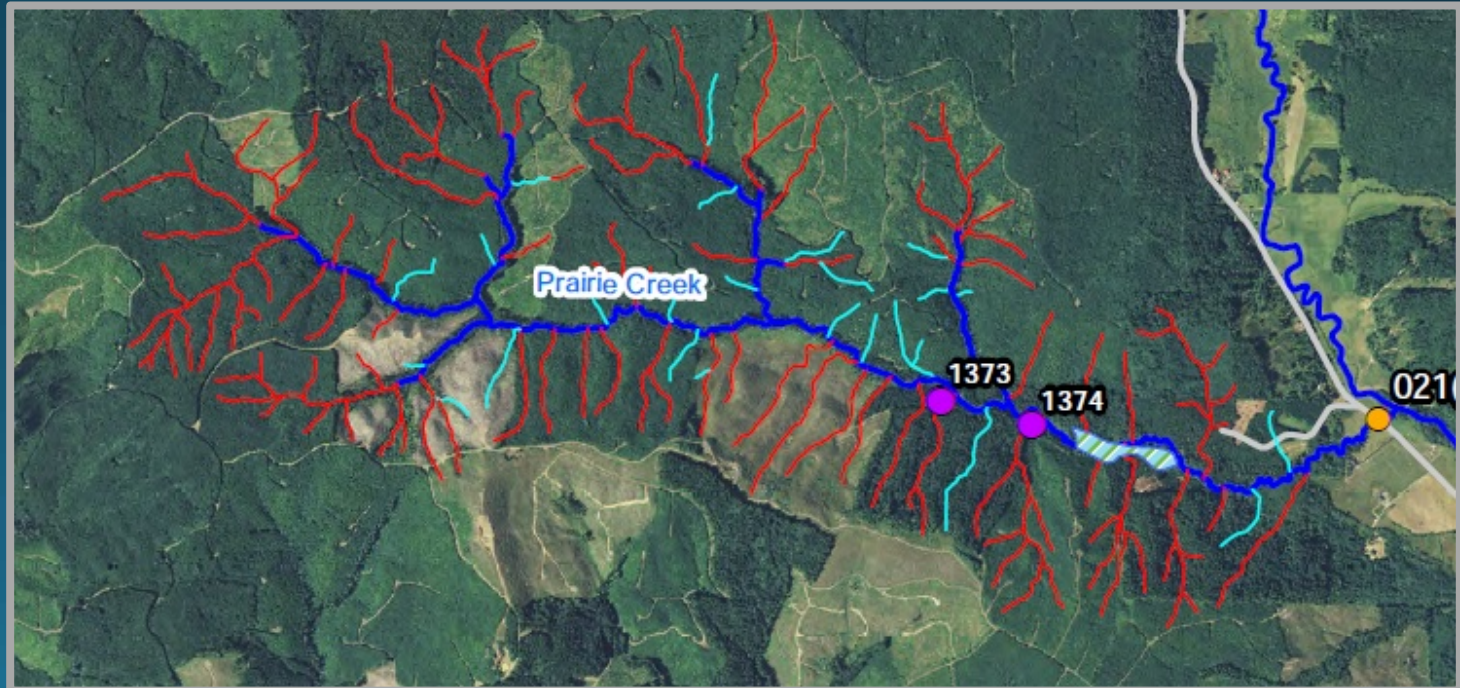
Attachment #302279, Bush Creek 125 1805W17A Vaughan road

Community involvement:
 One adjacent landowner
 interested in riparian
 revegetation.

Forested habitat upstream
 and no more barriers!

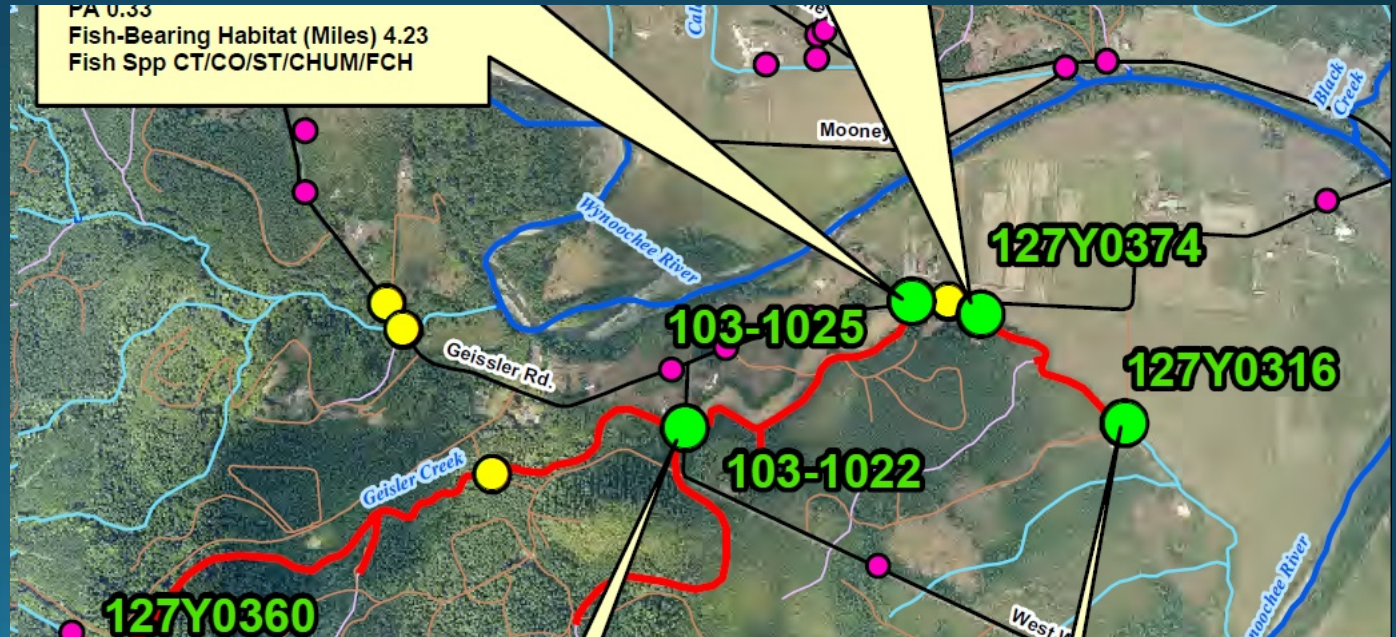
Prairie Creek Barrier

- Location: Prairie Creek, Lincoln MU
- Sponsor: Lewis County
- Summary: Replace 0% passable culvert and add large woody debris.
- Benefits: Coho (Cutthroat), 4.85 miles forested habitat upstream made fully accessible



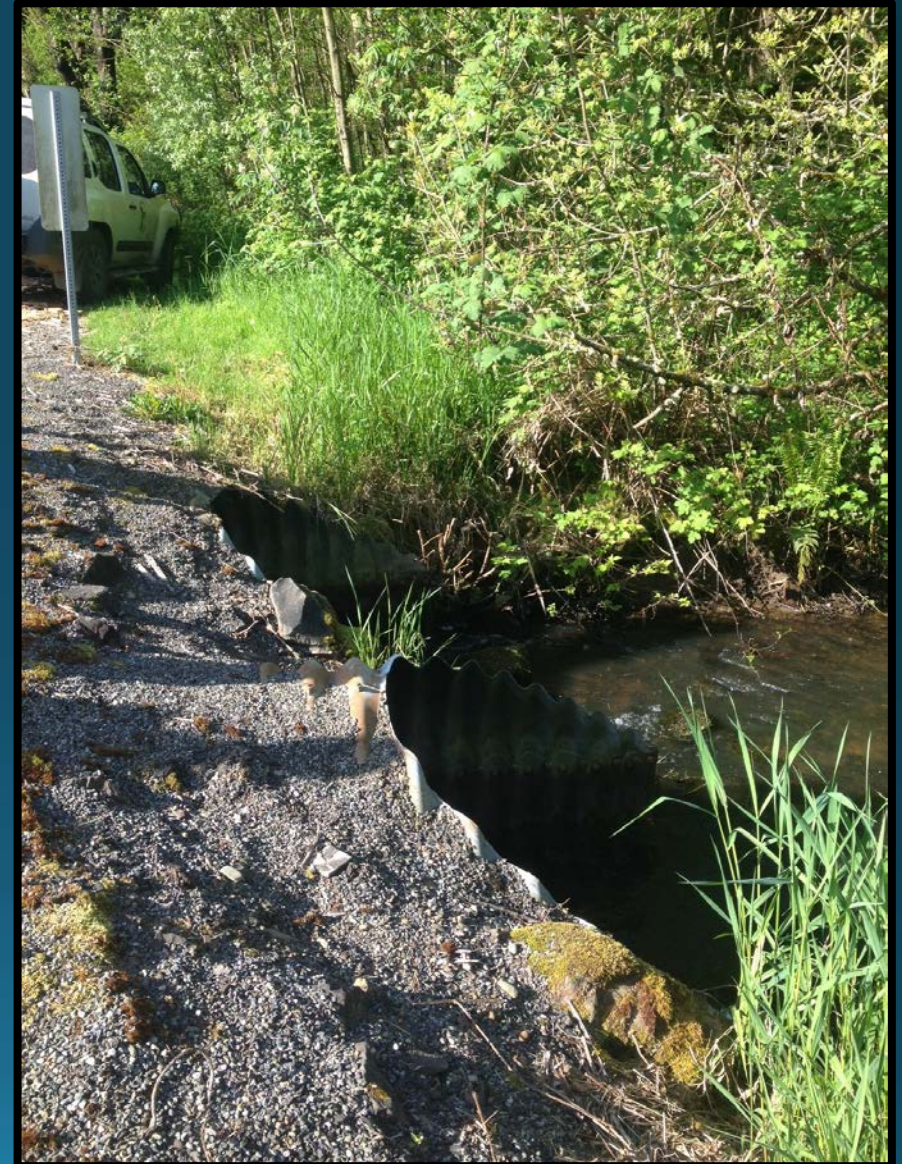
Geissler Creek Barriers

- Location: Wynoochee MU, Geissler Creek, near Montesano
- Sponsor: Chehalis Basin Fisheries Task Force
- Summary: 3 passage designs in tributary to Wynoochee. Will improve 1.5 miles to mostly forested.
- Benefits: Coho, Cutthroat, Chum, Steelhead



Berwick Creek – Lower Barriers

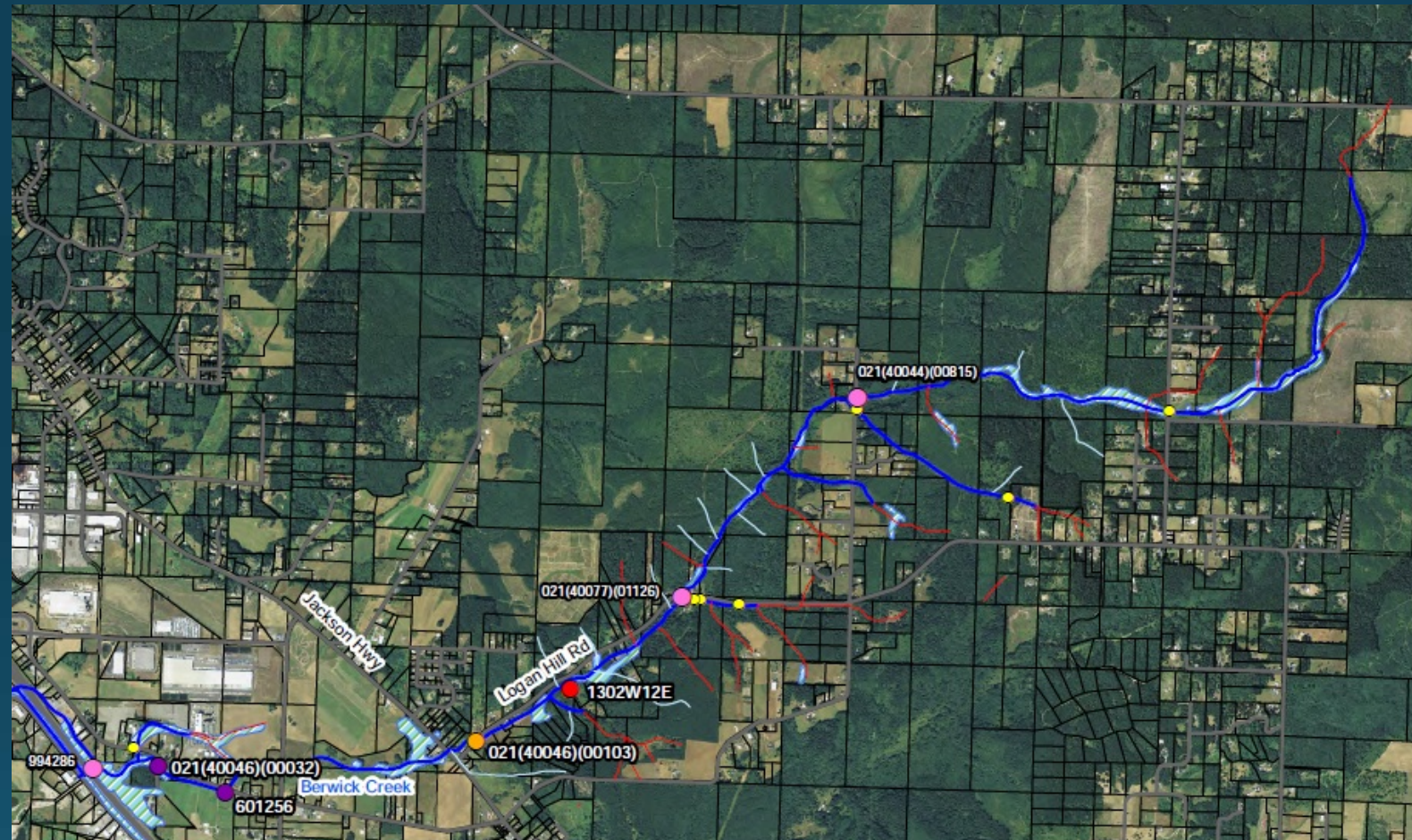
- Location: Berwick Creek, Newaukum MU, near Chehalis
- Sponsor: Port of Chehalis
- Summary: Design correction of (2) 67% passable culverts - 1.86 miles.
- Benefits: Coho, Steelhead & Cutthroat. 1.36 miles upstream habitat fully accessible



Berwick Creek Hogue Barrier

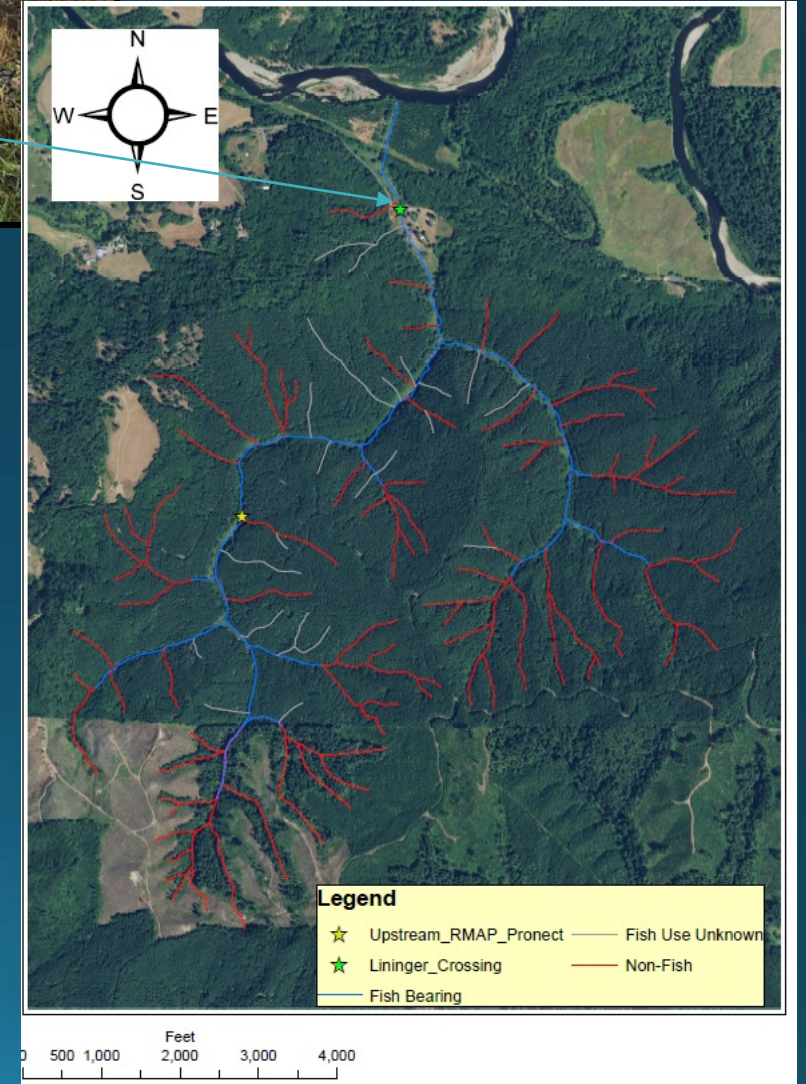
- Location: Berwick Creek, Newaukum MU
- Sponsor: Lewis Conservation District
- Summary: Design to correct 67% passable culvert.
- Benefits: Coho, Steelhead, Cutthroat. 3.29 miles upstream habitat fully accessible
- Issues: Blocked culvert & reduced aggregate transport





Mattson Barrier

- Location: Garrard Creek MAU, drains directly to Chehalis Mainstem.
- Sponsor: Grays Harbor Conservation District
- Summary: Construct to improve passage on small farm crossing, open access to 4.11 miles habitat
- Benefits: Coho, Cutthroat



Thank
You!

