

Project: NF Newaukum Lawson Reach Design and Construction

Synopsis:

- **Sponsor:** Lewis Conservation District
- **Location:** Lewis County, Cascade Mountains Ecoregion. NF Newaukum GSU (**Near-Term Priority Area**)
- **Landowner:** Rural Residential; some agricultural
- **ASRP Priority Limitations for this location:** Temperature, Habitat Diversity, Key habitat
- **ASRP Priority Actions for this location:** Large wood installation (High), Riparian restoration (High), Restore floodplain (medium), Remove Fish Barriers (Low)
- **Cost:** \$3,528,739
- **Narrative:**
 - Lewis Conservation District is seeking funding design and construct reach scale restoration projects along 1.3 miles of the NF Newaukum. Project elements include engineered log jams, side channel creation, and riparian planting.
 - An initial assessment of this reach has found that the function of natural river processes is impaired by reduced in-channel structure, low quality riparian conditions, and reduced floodplain connectivity. These impaired processes impact fish and wildlife through reduced amounts of refugia from high velocities, increased erosion, lack of food availability, too high of water temperatures, and generally low-quality habitat. Project actions were chosen that directly address these river processes, for example by increasing the amount of large wood.

Outcomes (Funded by this project):

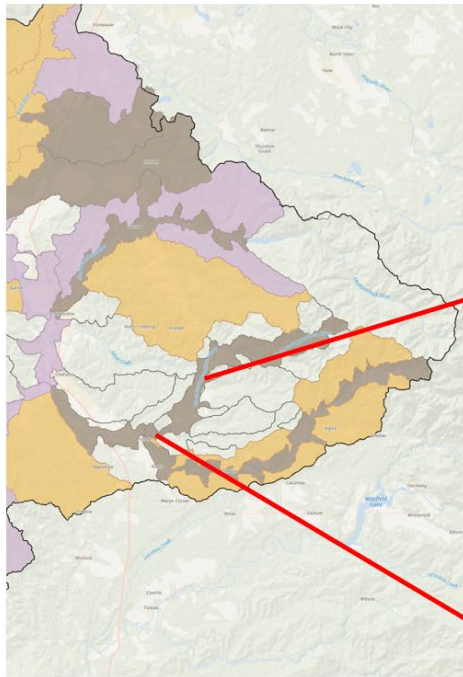
- 30 acres of floodplain restoration
- 1.25 miles of riparian streambank restored.
- 24 wood structures
- 198 pieces of large wood installed.
- 1,375 feet of side channel created/reactivated.

Previous and Related Funding:

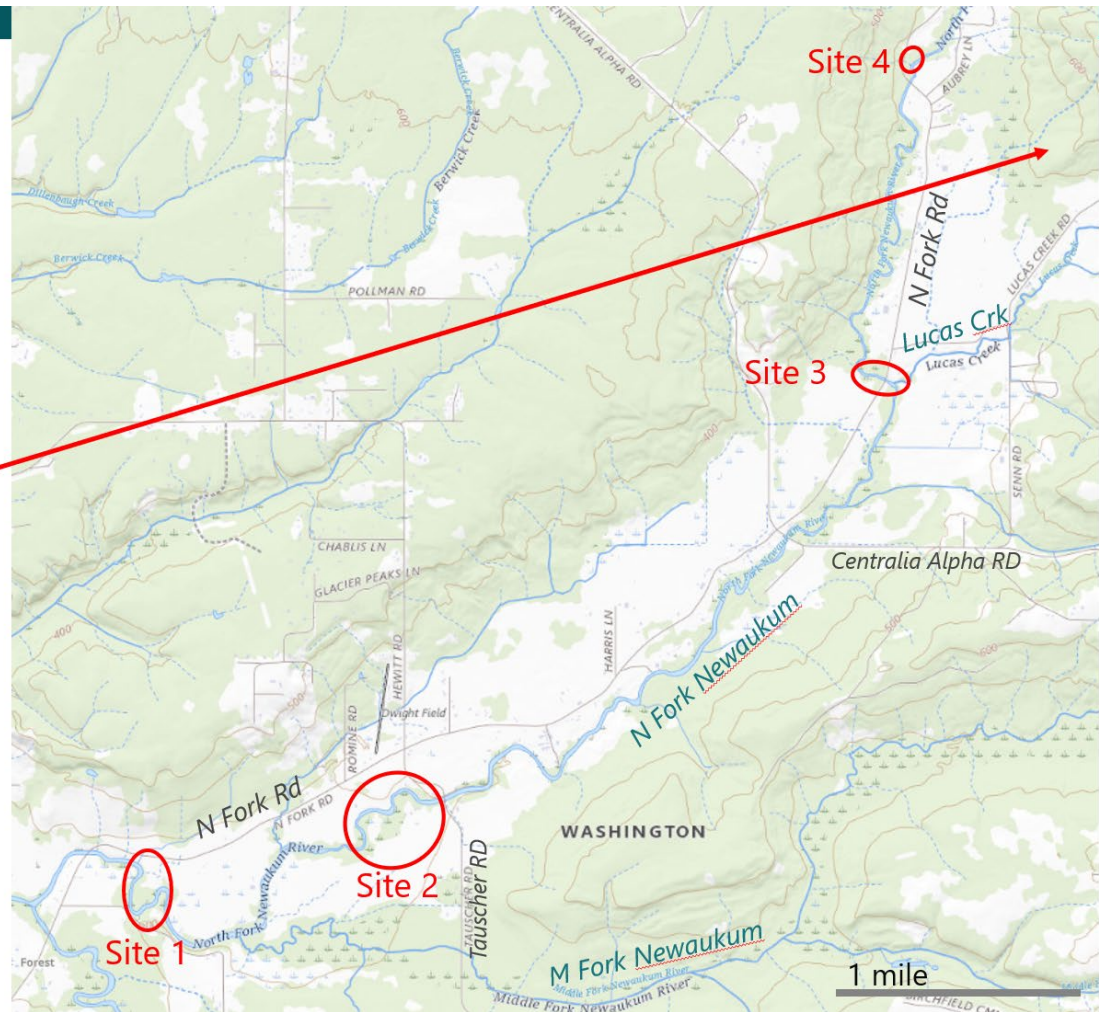
- LCD has received ASRP funding to develop habitat restoration projects in the Lawson Reach region of the North Fork Newaukum. They have used this funding to produce the concept designs and a concept design report which informs this grant request.
 - PRISM #: 22-1773. \$40,000 grant.
- This reach of the North Fork Newaukum is also part of the Chehalis Lead Entity's prioritized watershed plan for the upper Newaukum. The project actions in this grant largely align with the recommendations arising in that watershed restoration plan. Lewis CD participated in the development of this watershed restoration plan, and other organizations have submitted proposals for federal funding for reaches of the North Fork Newaukum upstream of Lawson Reach.

Milestones + Timeframe:

- Design completed in early 2025.
- Permits completed in early 2025.
- Construction in 2025 and 2026
- Riparian Planting following construction 2025 & 2026.

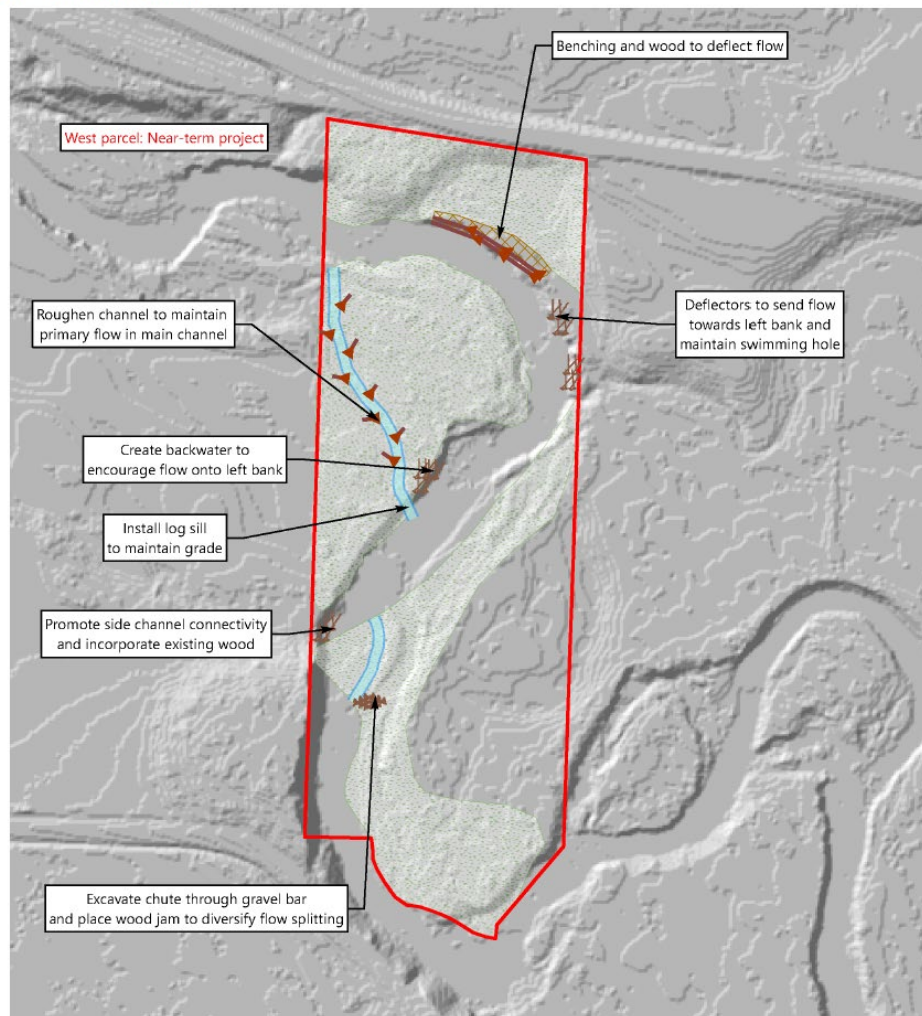


 **CHEHALIS BASIN
STRATEGY**



This project features four non-continuous restoration sites on the North Fork Newaukum

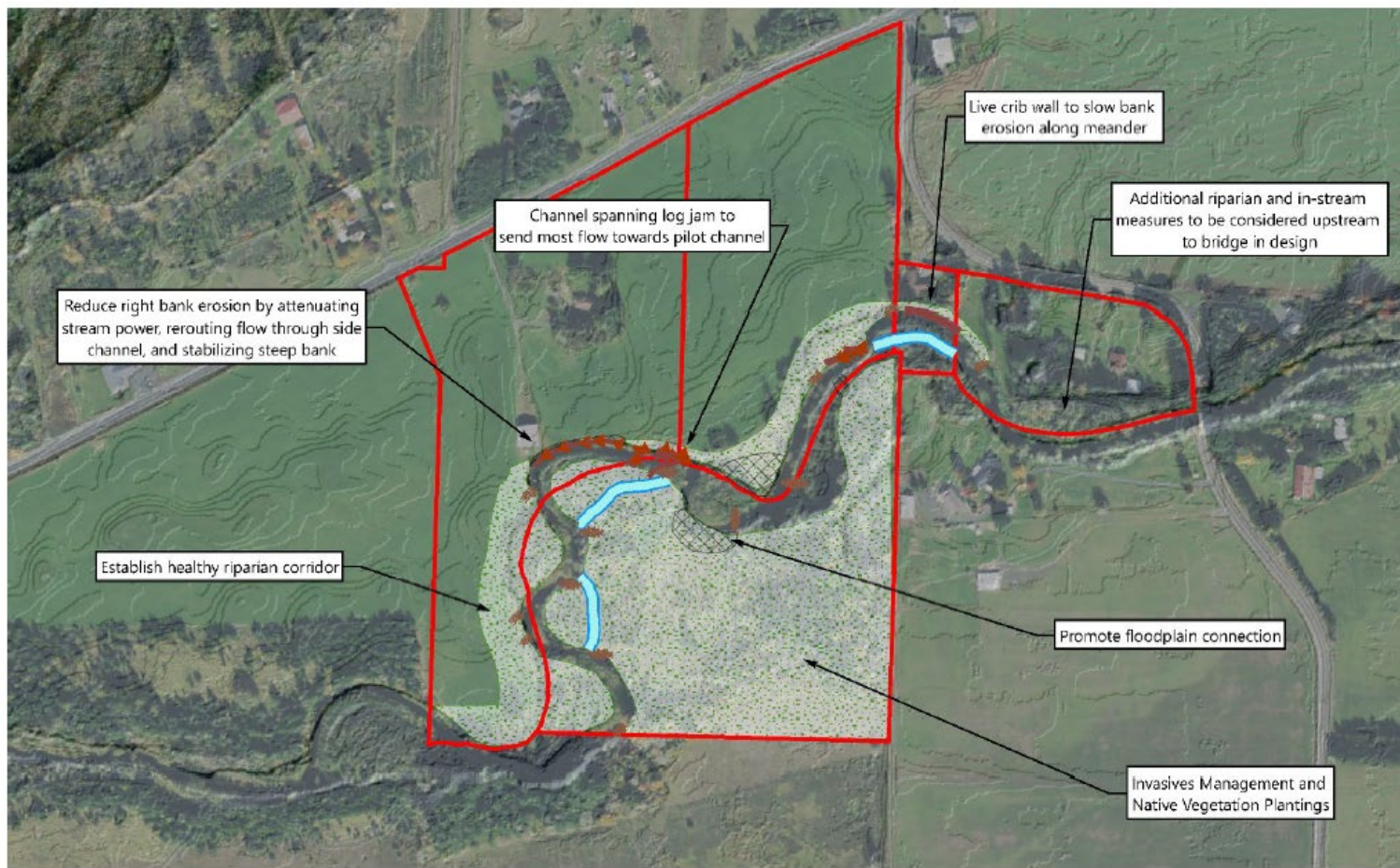
Figure 9
Site 1 Concept Plan









LEGEND:

- | | |
|--|-----------------------------|
| Large Wood | Bar Apex Engineered Log Jam |
| Establish Flow Path | Small Wood Structure |
| Benching/Grading | |
| Manage Invasives and Native Riparian Plantings | |





LEGEND:

- | | |
|--|--|
| Restoration Site |  Bar Apex Engineered Log Jam |
|  Channel Spanning LWM Structure |  Bank Barb Engineered Log Jam |
|  Activate Channel | |
|  Benching/Grading | |
|  Invasives Management and Native Vegetation Plantings | |



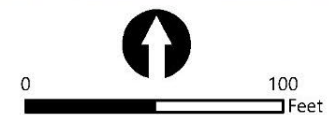
Site 2 concept

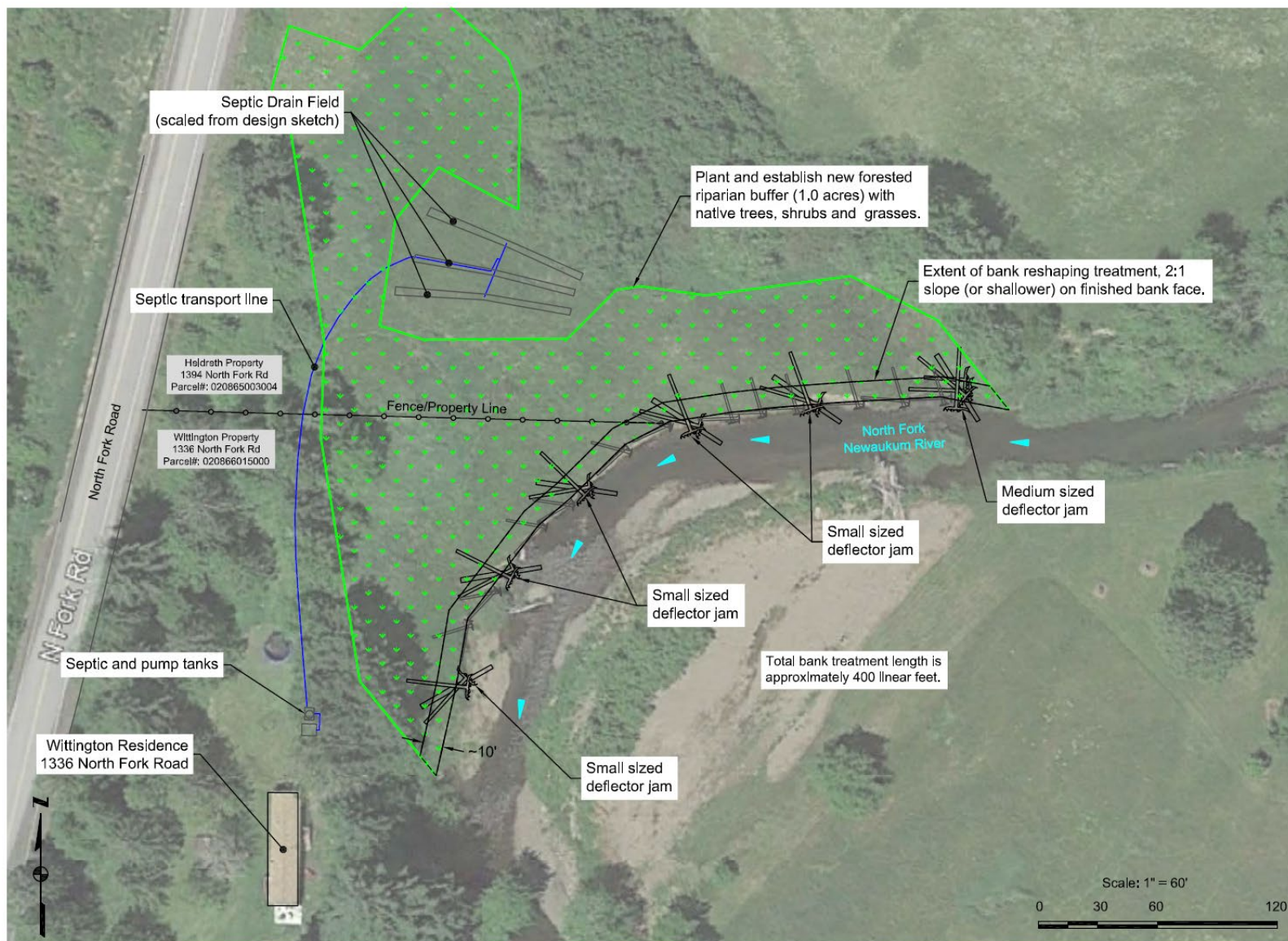


LEGEND:

- | | |
|--|--|
|  Culvert |  Large Woody Material |
|  Revegetate |  Bank Barb Engineered Log Jam |

Site 3 concept





Site 4 concept