

Project: Upper Basin Knotweed Control

Synopsis:

- **Sponsor:** Lewis Conservation District
- **Location:**
 - **Focal Areas-** Lewis County, Cascade Mountain +Willapa Hills Ecoregions. Lower Skookumchuck, NF Newaukum, Stillman, Lower SF Chehalis, Upper SF Chehalis GSUs (**Near-Term Priority Areas**)
 - **Wider Outreach region-** Lewis County-wide (within Chehalis Basin)
- **Landowner:** Multiple Private and public landowners- primarily agricultural and/or rural
- **ASRP Priority Limitations for this location:** Habitat Diversity, Temperature, Key habitat
- **ASRP Priority Actions for this location:** Riparian restoration (high), (and others, depending on specific location)
- **Cost:** \$497,500
- **Narrative:**
 - Lewis Conservation District is seeking funding to eradicate non-native knotweed, an invasive riparian plant species, from regions in the Upper Chehalis Basin which have been prioritized for riparian restoration by the ASRP. Invasive knotweed disrupts riparian processes by preventing the establishment of the native riparian plant species which historically would have provided large wood inputs, shaded the water, reduced erosion, and provided key habitat. Knotweed removal is commonly a necessary precursor to other restoration actions such as riparian plantings and large wood installation. Additionally, as knotweed can be spread through aquatic systems by flowing water, a top-down basin-wide approach such as this is necessary to produce significant results.
 - This project will identify knotweed locations through surveys and outreach events. Identified knotweed locations will be documented in a database in order to track eradication progress. Lewis Conservation District employees will control identified knotweed locations through repeated spraying, followed by re-planting with native riparian species after eradication. The Conservation District will coordinate with the Lewis County Noxious Weed Board and the Chehalis Basin Cooperative Weed Management Area workgroup.

- The focal areas of this project include Spring Chinook reaches. This project will benefit Spring Chinook by addressing the limiting factors of stream temperature and habitat diversity.

Outcomes (Funded by this project):

- Exact acreage of invasive control will be determined through surveys of knotweed. Anticipated amounts are as follows:
 - 25 acres of knotweed control (repeated control efforts)
 - 15 acres of riparian planting
 - At least one landowner outreach event/workshop
 - Database to track extent of knotweed infestation

Previous and Related Funding:

- Existing landowner outreach funded through the ASRP has already identified significant knotweed locations with willing landowners and informed the focal areas for this project. This includes project development grants for the Newaukum river, South Fork Chehalis River, and a “Watershed Liaison” grant for the entire upper Chehalis Basin.

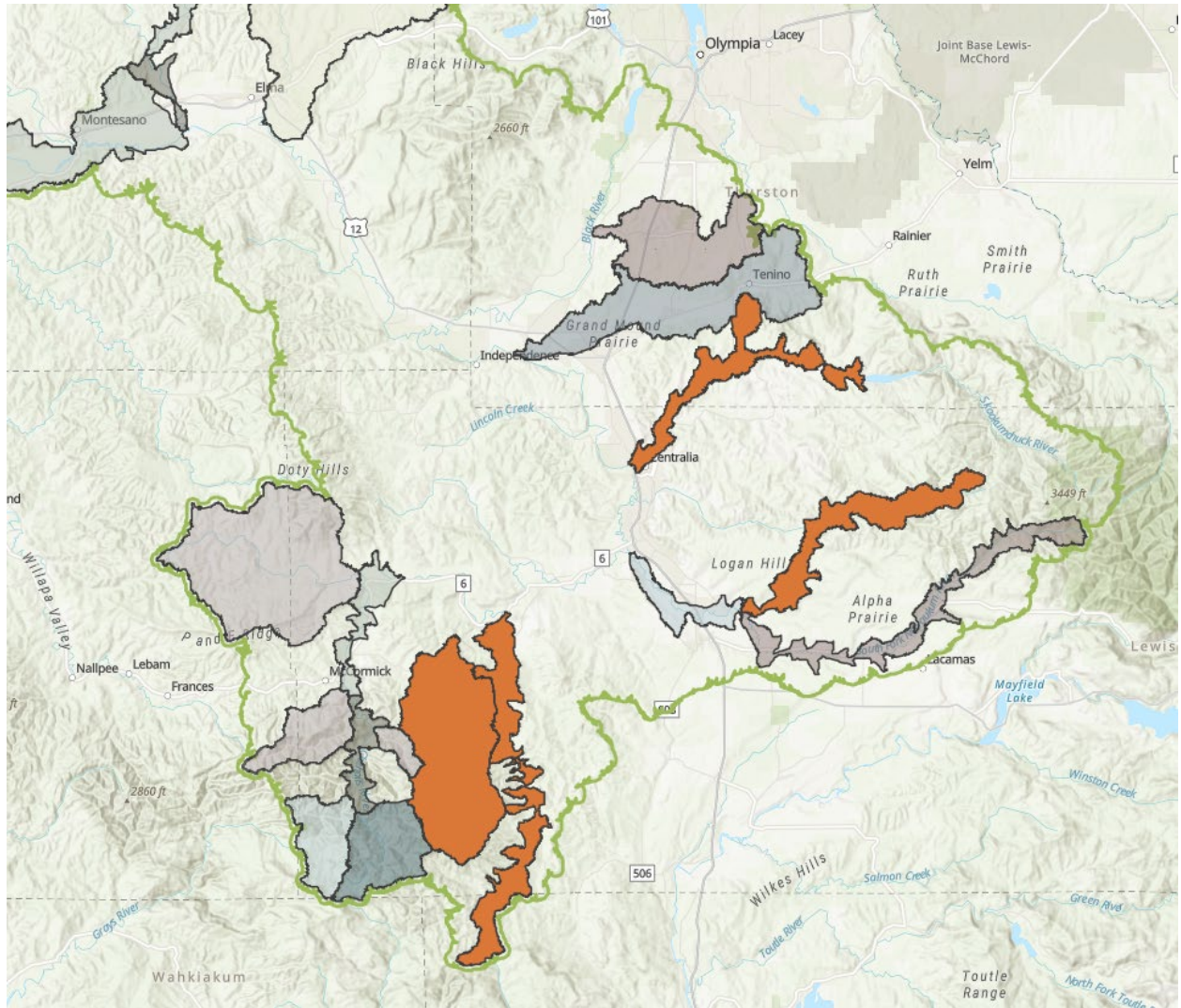
Milestones + Timeframe:

- Spring 2024 - Hire consulting, develop database, track locations.
- Summer(s) 2024 2029 - spray and reassess sites.
- Winter 2026 - Replant with native vegetation

Feedback:

- LCD has already done outreach to about 90% of landowners in Newaukum, Stillman, and SF Chehalis. More outreach needed in Skookumchuck.
- Comment from RIT- invasive species projects can “open doors” to other restoration projects

Comment from TRT- support project; success could be determined by ability of Lewis CD to remain engaged over the long term.



Focal Areas:

- Lower Skookumchuck
- NF Newaukum Stillman
- Lower SF Chehalis
- Upper SF Chehalis