



Lower Satsop RM 0-2 Phase 2 Restoration: Construction

Drew Mealor, WDFW

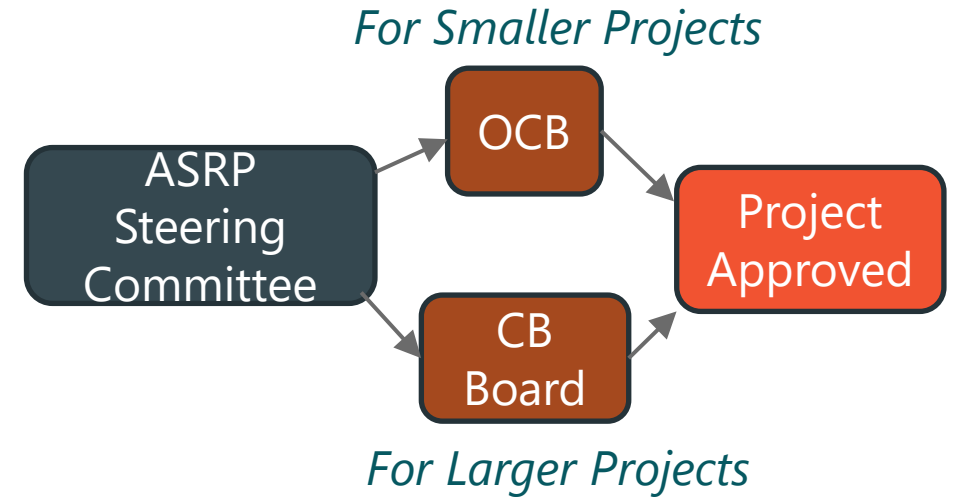
January 11, 2024



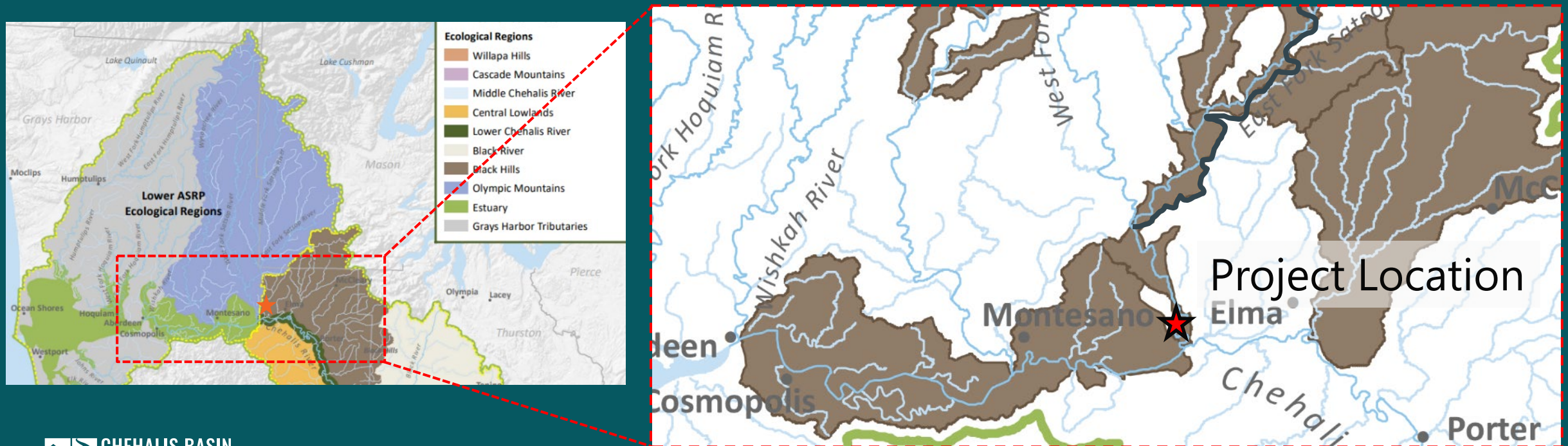
ASRP PROJECT FUNDING APPROVAL

Project approval process:

- Board approval needed for project funding requests exceeding \$500,000
- Two-part approval process
 - First meeting – project introduction
 - ***Second meeting – decision/vote to approve (or not approve) project for funding***



SATSOP RM 0-2 PHASE 2 RESTORATION: CONSTRUCTION



SATSOP RM 0-2 PHASE 2: CONSTRUCTION

- **Sponsor/Budget:** GHCD / **\$3,000,000 ASRP + ~~\$6,276,084 NCRF~~** (\$9,301,084 total)
- **Location:** Grays Harbor County; Lower Satsop MS GSU (**Near-Term Priority Area**)
- **Landowner:** Multiple Private Agricultural; WDFW; Port of Grays Harbor
- **Scope:** Implement around two miles of restoration, including **large wood, riparian plantings, side channel development**
- **ASRP Priority Limitations Addressed By Project:** **Key Habitat, Temperature, Habitat Diversity, Channel Stability, Sediment Load**
- **ASRP Priority Actions Addressed by Project:** **Place Large Wood (High), Riparian restoration (high), reconnect/restore floodplain (medium)**
- **Species Present:** Coho, Steelhead, Fall Chinook, Chum

Geospatial Unit	Restoration Actions							Priority Species or Habitat Focus	Limiting Factors From Highest Priority to Lowest
	Place Large Wood	Remove Fish Barriers	Reconnect/Restore Floodplain	Riparian Restoration	Beaver Ponds/BDAs	Wetland Restoration	Acres of OSF* Habitat Protection/Restoration		

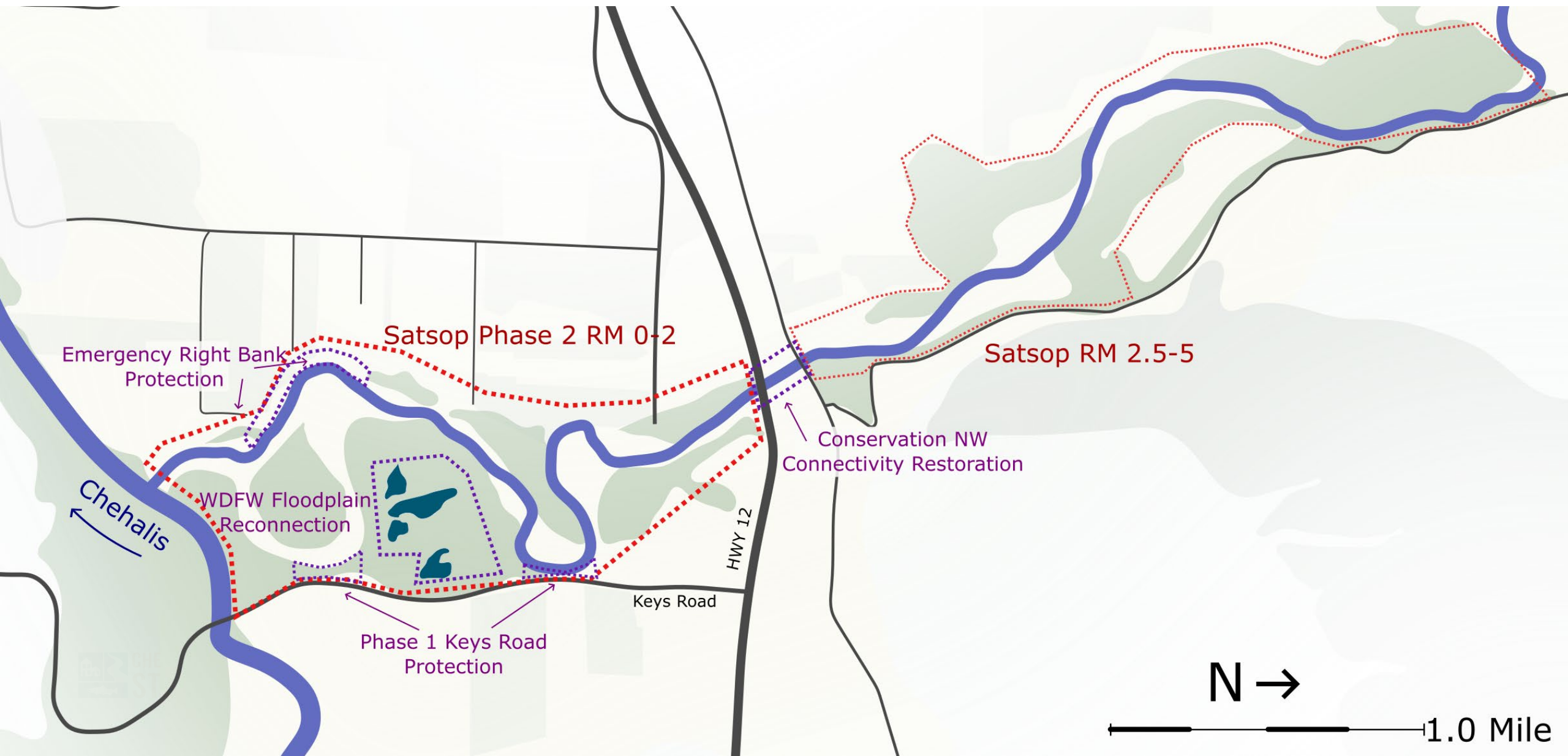
Lower Satsop MS GSU



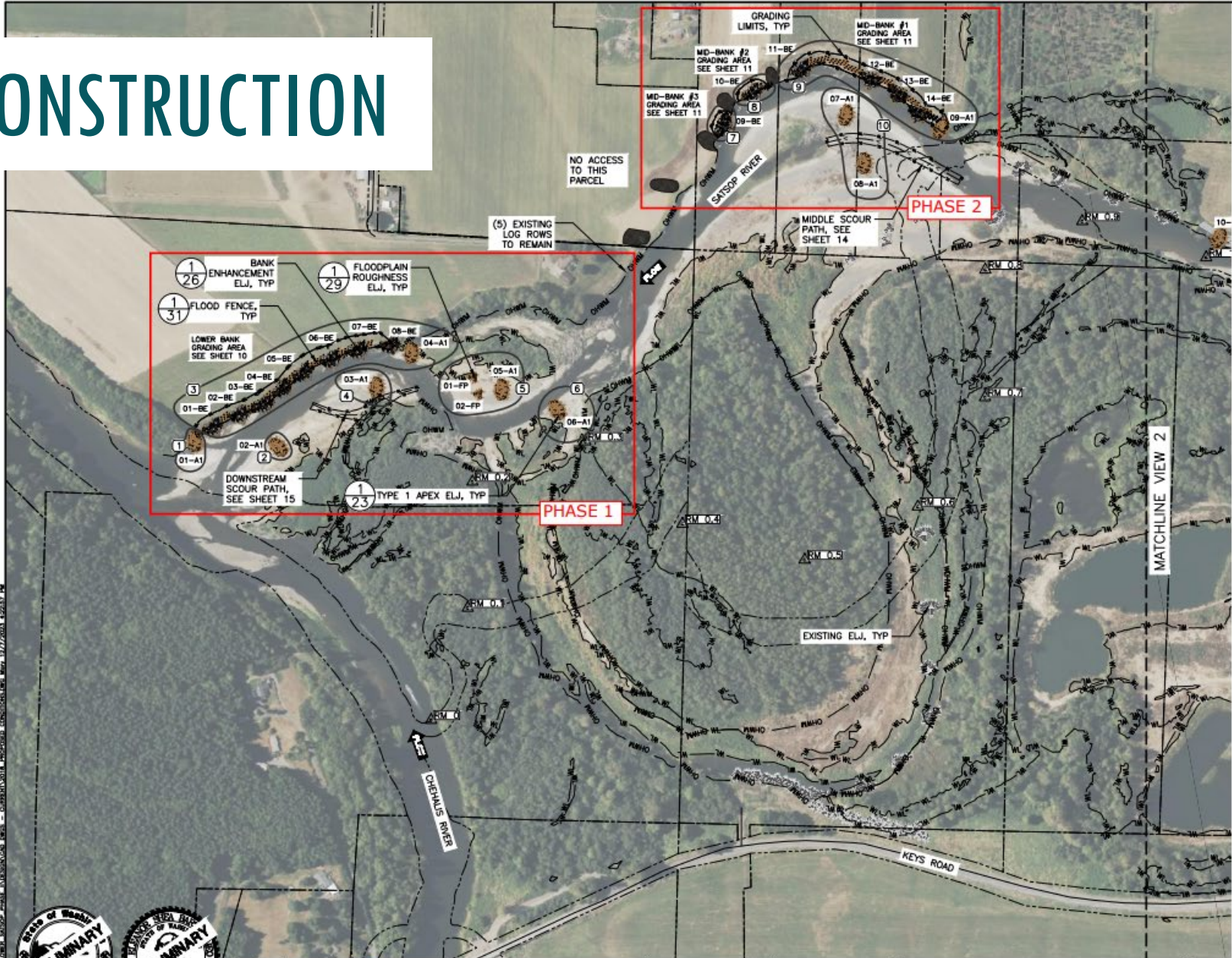
- Ⓜ High Priority Core Habitats
- Ⓜ Early Riparian Restoration

Key Habitat, Temperature, Habitat Diversity, Channel Length, Channel Stability, Predation, Flow, Sediment Load

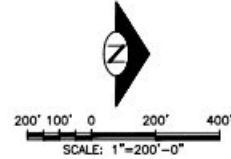
RELATED WORK AND PREVIOUS FUNDING



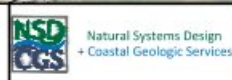
PHASED CONSTRUCTION



- NOTES:**
1. SEE SHEETS 20 AND 22 FOR WATER MANAGEMENT.
 2. 15 EXISTING LOG ROWS ARE PRESENT AT THE MID-BANK GRADING AREAS. LOG ROWS SHALL BE SALVAGED AND REUSED IN BANK ENHANCEMENT ELJ CONSTRUCTION AS SHOWN ON SHEET 26 AND AS DIRECTED BY THE ENGINEER.



0 100 1
IF THIS BAR DOES NOT
MEASURE 1" THEN
DRAWING IS NOT PLOTTED
TO ORIGINAL SCALE.

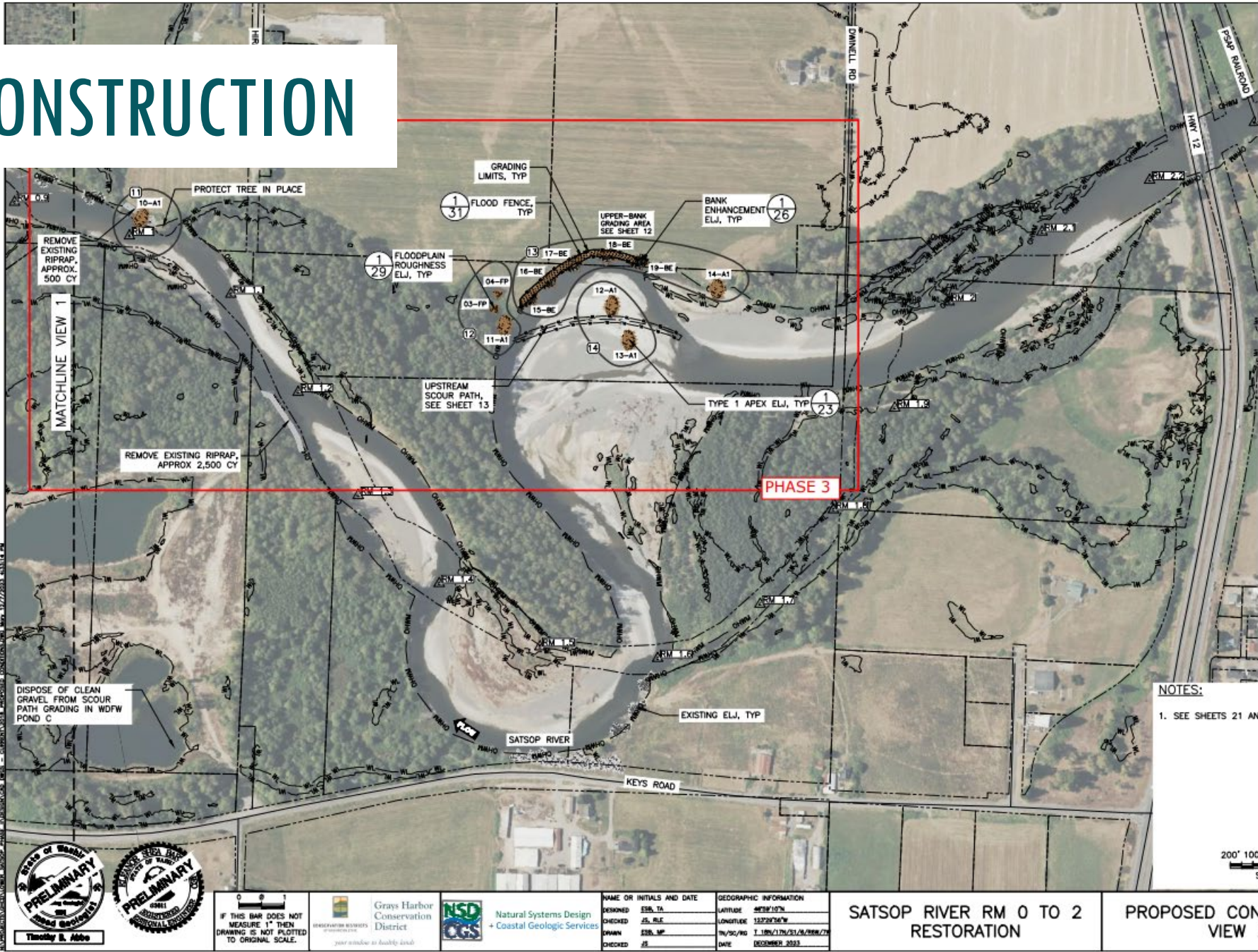


NAME OR INITIALS AND DATE		GEOGRAPHIC INFORMATION	
DESIGNED	JSS, TA	LATITUDE	46°32'10"N
CHECKED	JSS, RLE	LONGITUDE	122°28'36"W
DRAWN	JSS, MP	TM/SC/NO	1.18m/11m/2018/8/8/8/2/8
CHECKED	JSS	DATE	DECEMBER 2023

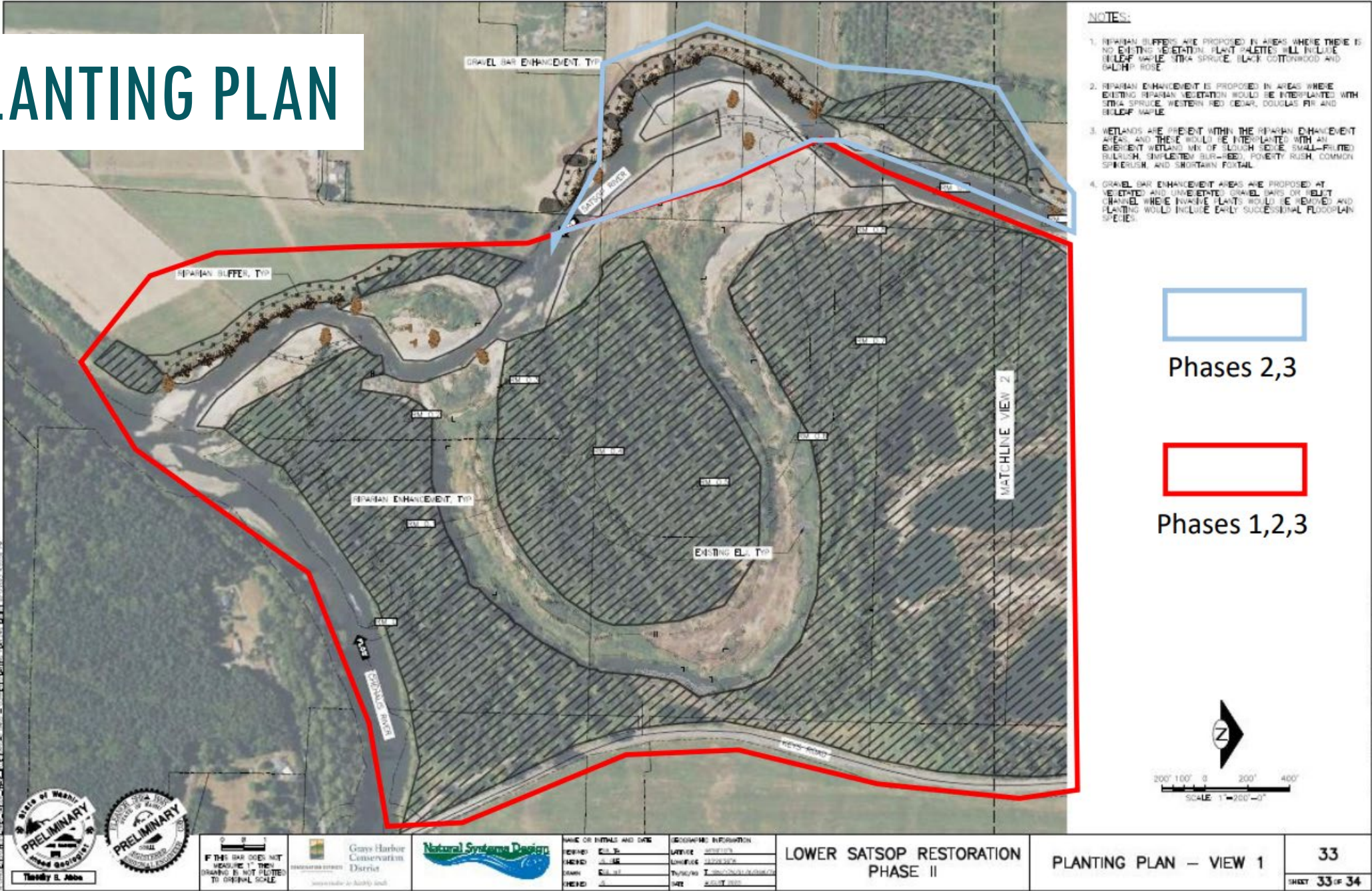
SATSOP RIVER RM 0 TO 2
RESTORATION

PROPOSED CONDITIONS -
VIEW 1

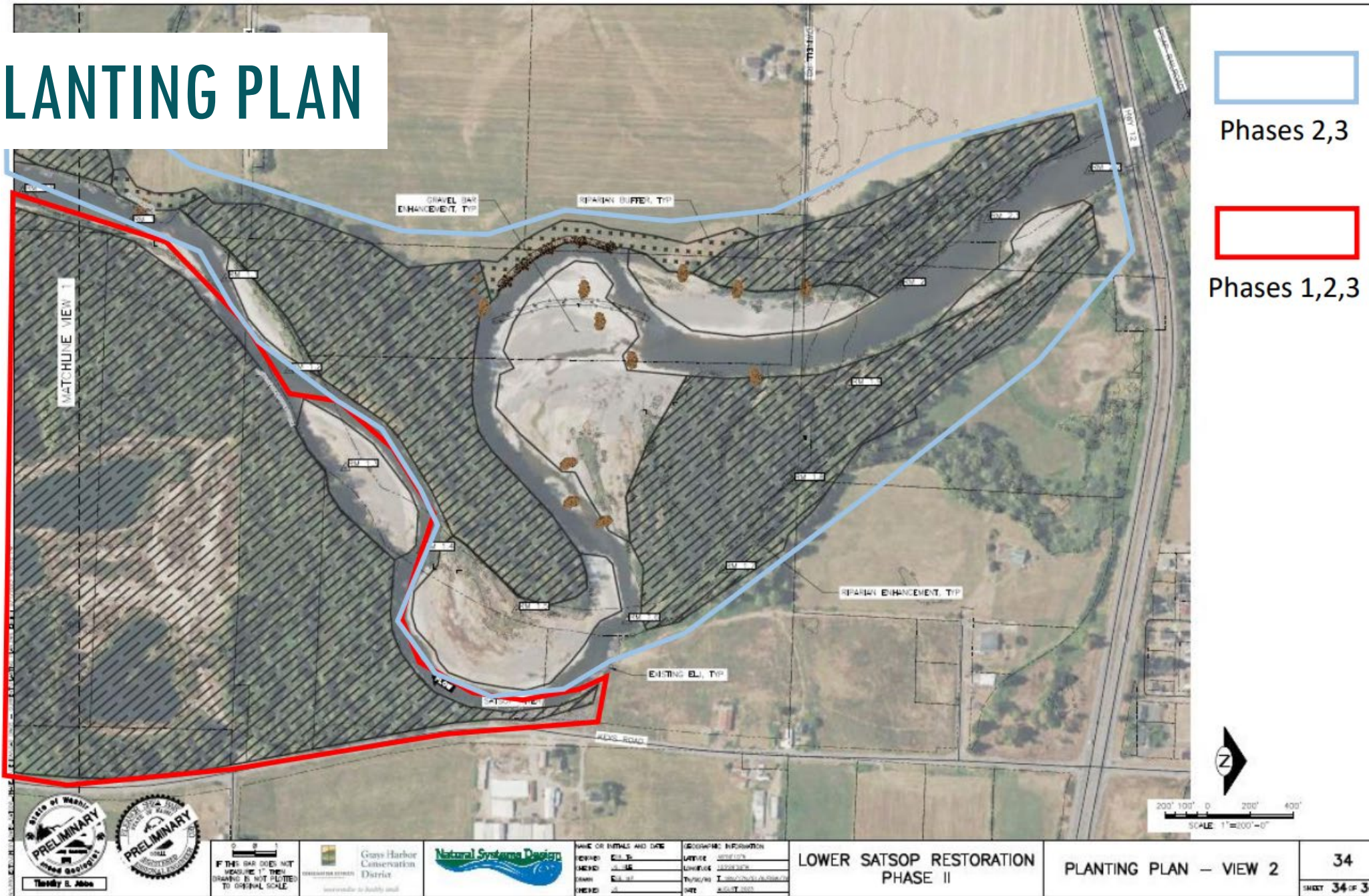
PHASED CONSTRUCTION



PHASED PLANTING PLAN



PHASED PLANTING PLAN



PROJECT UPDATE

- National Fish and Wildlife Foundation National Coastal Resilience Fund grant (\$6.3 million) not received by Grays Harbor Conservation District
- ASRP Steering Committee reviewed sponsor's plan for phasing the project using the \$3 million original request. After review, the ASRP Steering Committee recommends to the Chehalis Basin Board to fund the \$3 million request.
- GHCD confirmed phased plan with landowners on 1-2-24

Chehalis Basin Board Task

Review sponsor's phased plan and take action on whether to approve \$3 million for the Satsop River Mile 0-2 Project



PHASED BUDGET

Total project costs lower than original budget due to continued refinements, and reduced contingency for 2024

Satsop River Mile 0-2 Phased Budget	
Total	\$7,852,735.62
Phase 1	\$3,000,000.00
Construction (2024)	\$2,405,102.19
Construction Oversight (NSD)	\$100,000.00
Construction Management (GHCD)	\$50,112.00
Project/Financial Management (GHCD) (AA&E)	\$43,200.00
Riparian Restoration/Enhancement (GHCD Crew)	\$330,000.00
Restoration Materials	\$29,254.61
GHCD Indirect (10%)	\$42,331.20
Phase 2	\$2,415,120.49
Construction (2025)	\$1,712,616.75
Construction Oversight (NSD)	\$100,000.00
Construction Management (GHCD)	\$51,504.00
Project/Financial Management (GHCD) (AA&E)	\$44,400.00
Riparian Restoration/Enhancement (GHCD Crew)	\$300,000.00
Restoration Materials	\$30,000.00
GHCD Indirect (10%)	\$39,590.40
Inflation contingency (8%)	\$137,009.34
Phase 3	\$2,437,615.13
Construction (2025/26)	\$1,730,805.12
Construction Oversight (NSD)	\$100,000.00
Construction Management (GHCD)	\$52,896.00
Project/Financial Management (GHCD) (AA&E)	\$45,600.00
Riparian Restoration/Enhancement (GHCD Crew)	\$300,000.00
Restoration Materials	\$30,000.00
GHCD Indirect (10%)	\$39,849.60
Inflation Contingency (8%)	\$138,464.41

TASK: FUNDING REQUEST DECISION

- This project is asking for construction funding of \$3,000,000
 - Because this amount is greater than \$500,000, the Board must take action to approve funding request