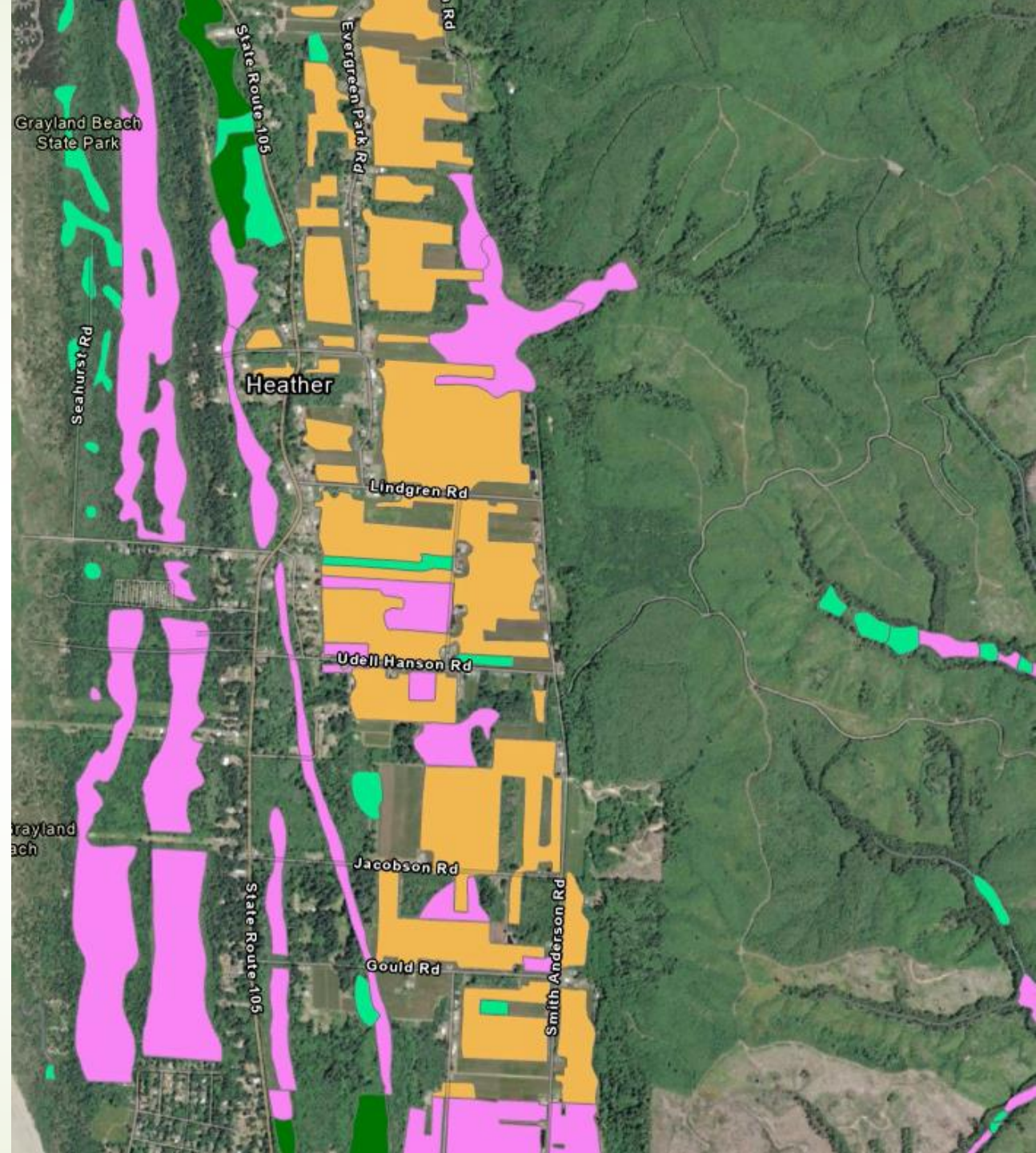


Statewide Wetland Mapping Inventory

The Washington State Department of Ecology (Ecology) conducted a statewide survey funded by the Environmental Protection Agency (EPA) through a Wetland Program Development grant to inventory wetland maps and mapping efforts.





Project Goals

Ecology connected with voluntary participants from local and Tribal governments, state and federal agencies, and land managers who regulate or manage wetlands.



Primary goals of the project include:

Identify the status and needs of local, regional, and statewide wetland mapping efforts.

Identify where wetland-mapping improvements are needed and,

Who may be appropriate collaborators for future wetland-mapping projects.



Basic Project Structure


Participants filled out a survey designed to assess:

- Wetland data needs
- Wetland data creation



Follow up interviews were conducted to:

- Review survey responses
- Answer any questions that arose
- Have a general discussion about wetland mapping, how it is used by a participant, and if they feel their needs are currently met.



This project will help create a consolidated, publicly accessible, list of available wetland maps, mapping efforts, and associated contacts across Washington that will be hosted on Ecology's website.

Work Plan Tasks	Estimated Timeline	Status
1. Create awareness of the project and identify potential entities.	12/1/2021 – 2/28/2022	Complete
2. Develop list of GIS/wetland contacts and a survey for acquiring specific mapping effort information.	3/1/2022— 8/31/2022	Complete
3. Interview GIS/wetland contacts.	8/1/2022— 11/30/2022	Complete
4. Synthesize and analyze the survey responses.	12/1/2022— 2/28/2023	In progress
5. Work with Ecology IT staff to produce a web-based map or list tied to existing Ecology wetland maps.	3/1/2023— 6/30/2023	Not started
6. Public outreach by announcement of project completion and presentations.	7/1/2023— 2/28/2024	Not started

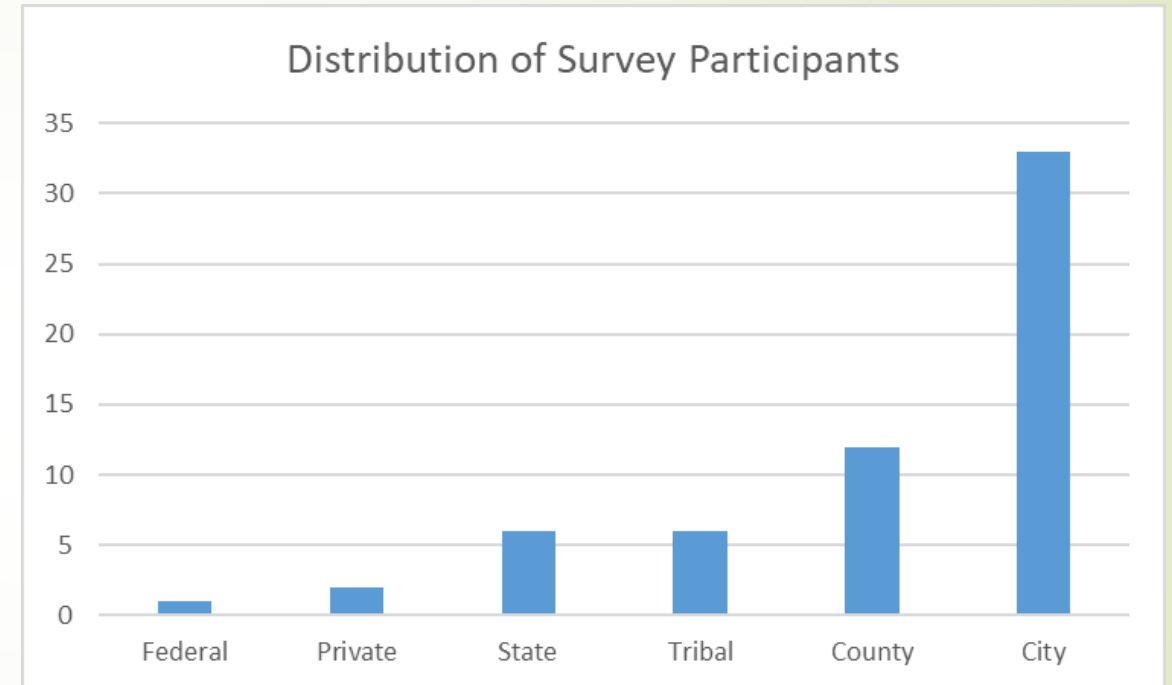


Current Project Status

Work plan tasks 1, 2, and 3 have been completed. Synthesis of survey responses and analysis of results is currently in progress.

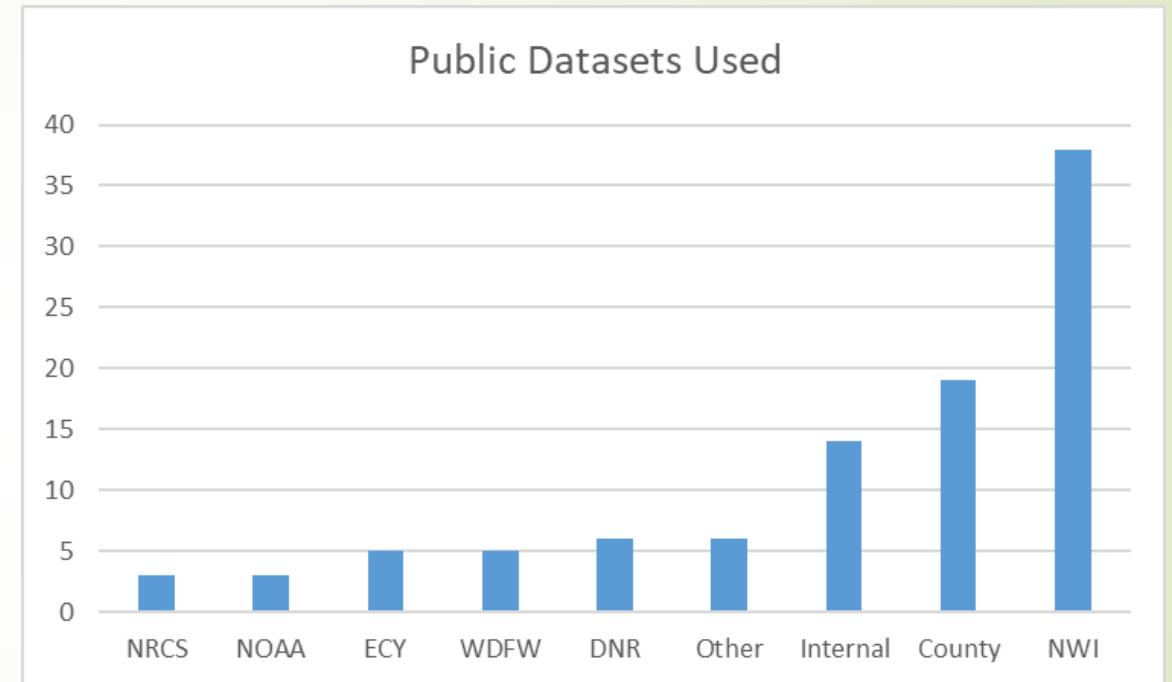
Some Statistics to Share

- ▶ Over 300 hundred contacts were initially reached out to directly.
 - ▶ ListServ announcements were also made through Ecology mailing lists, OCIO mailing lists, and various other spatial workgroups.
- ▶ Response of interest in participation from 103 different agencies, Tribes, private organizations, and government jurisdictions of various levels.
- ▶ Ecology was successful in getting 60 participants to return completed surveys.



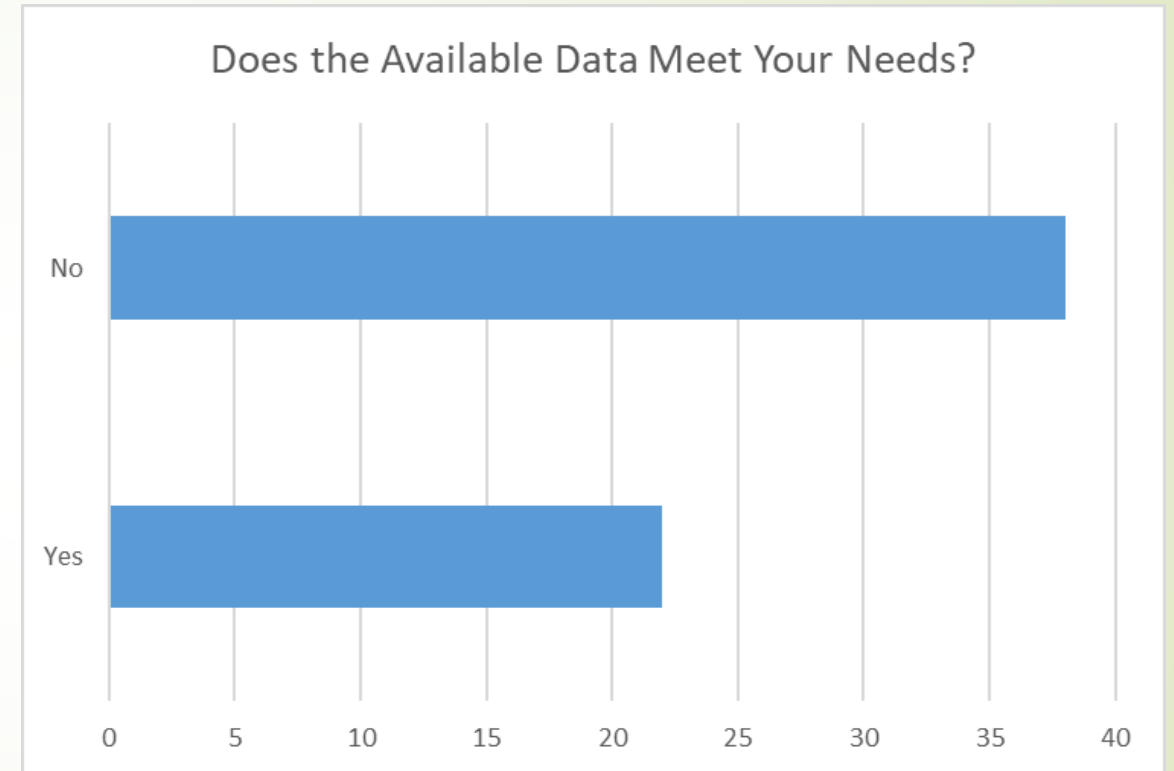
Data Needs Statistics

- NWI was stated as a dataset that 38 participants rely upon to conduct their wetlands work. This equates to approximately 63% percent of those who took the survey relying NWI.
- City jurisdictions primarily relied on internal datasets that they create, or data from the county level and NWI to inform their decision-making processes.



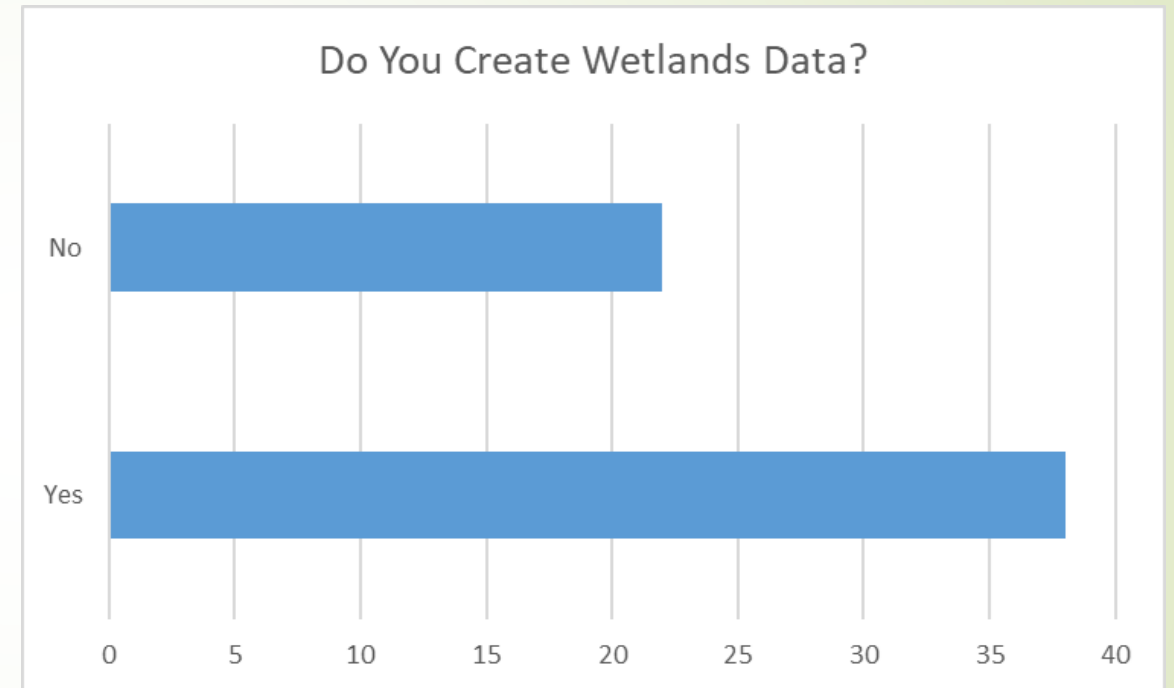
Data Needs Statistics

- Approximately 63% of participants indicated that their wetland data needs were not being met.
- Of the 37% that felt their needs were being met, 32% relied primarily on internal datasets that they created in house, not needing to reference external datasets such as NWI.
- This means that only 25% of participants in total, who do not have the capacity to create their own in house wetlands data, felt that the publicly available data was able to meet their needs.



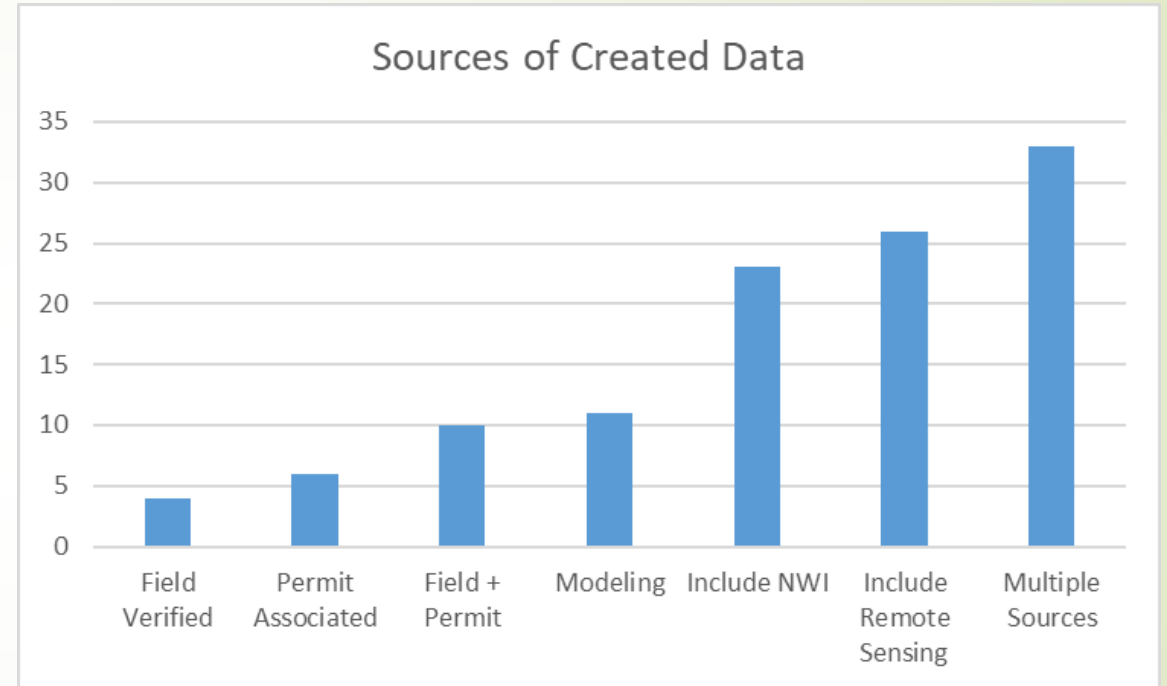
Data Creation Statistics

- Approximately 63% of participants indicated that they created wetlands data.
- There were 61 data sets captured by the survey. If we look at data that only specifically creates or models wetlands data outside of basic manipulation of public data sets, then the number of created wetland datasets is reduced to 57.



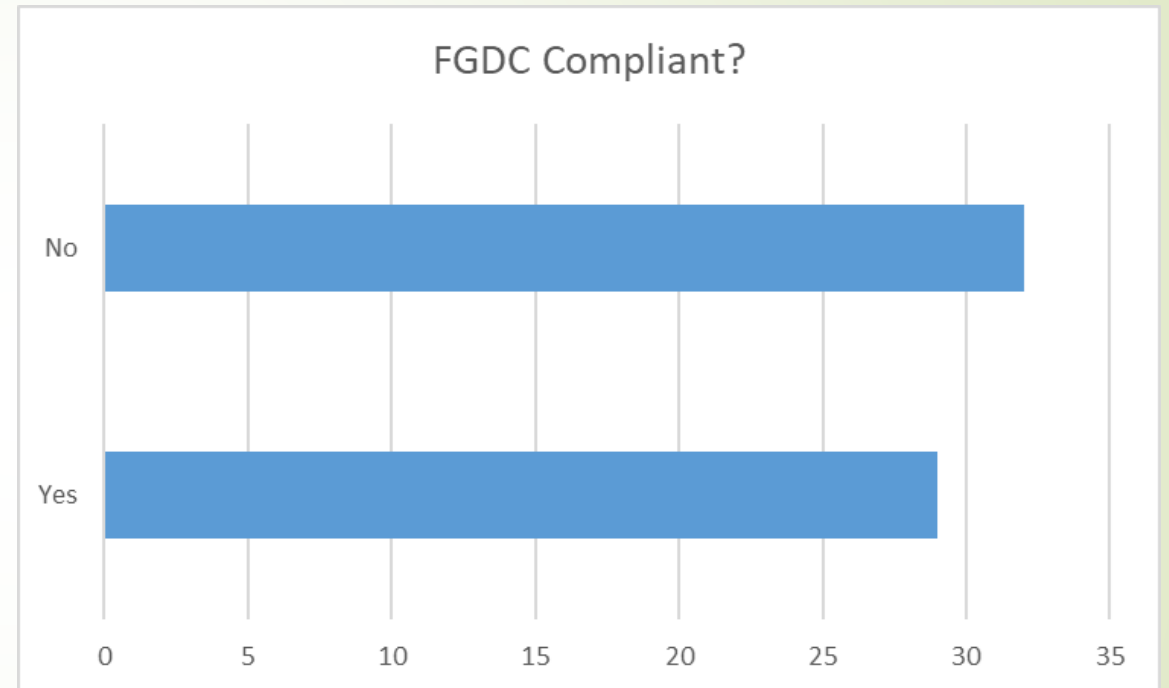
Data Creation Statistics

- A small portion of participants relied solely on either field verified data, permit data, or a combination of the two sources for data creation.
- Most participants who created data also used an approach of combining multiple sources, using all the data available to them to try and create the best insight into wetlands in their area.



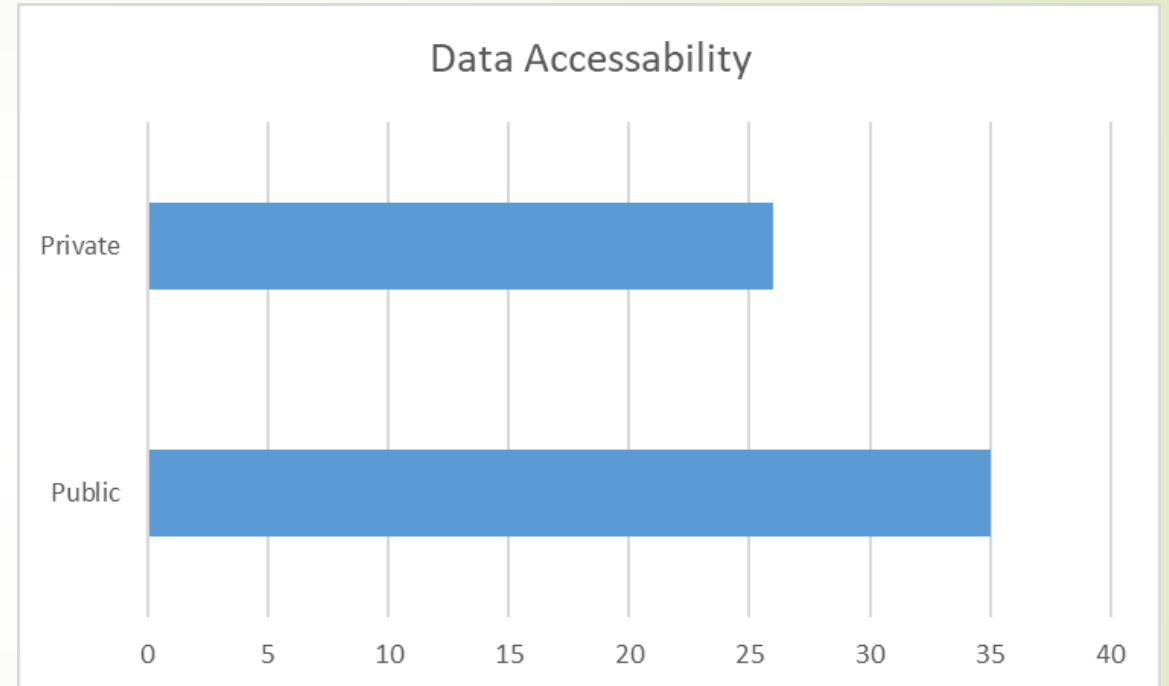
Data Creation Statistics

- ▶ QA/QC techniques varied between participants, accuracy and methodology used to create data was heavily dependent on individual jurisdiction capacity and GIS “know how”.
- ▶ 47% of participants indicated that they maintained their created data to Federal Geographic Data Committee (FGDC) standards.



Data Creation Statistics

- Of the 61 data sets that were created by participants, 57 percent are publicly available for access to anyone who may be interested.
- The other 43 percent of data sets were kept private for various reasons such as the data set was considered incomplete, the data are considered sensitive, or the data set was considered for internal use only.





Conclusions

- ▶ During interviews, the primary issue stated with the currently available public data is that it is often outdated, inaccurate, and not site specific enough to the needs of end users.
- ▶ When asked what other types of data would be helpful for wetlands work it was apparent that most participants were hungry for almost any and all freshly updated, high resolution data.
- ▶ NWI is relied upon by the majority of participants, and an update would benefit the broadest range of wetland mapping data users.
- ▶ Cities see the most field verified wetland data through delineation reports, permit reviews, and other regulatory processes.
 - ▶ A few cities have a good method for digitizing this data,
 - ▶ Others want to digitize this data, but don't know how.
- ▶ A need for wetland data digitization guidance and standardization has emerged
 - ▶ This would give entities a method to accurately and consistently translate new and historic physical wetland data into a digital (GIS) format.
 - ▶ Provide opportunity for a standardization of data across the state and potential for consolidation of site-specific wetlands data into a statewide dataset.



For More Information

Contact:

- ▶ Connor Racette, Environmental & Geospatial Specialist
 - ▶ connor.racette@ecy.wa.gov
 - ▶ 360-870-3774

- ▶ Lauren Driscoll, Wetlands Section Manager
 - ▶ lauren.driscoll@ecy.wa.gov
 - ▶ 360-584-5107