



STATE ENVIRONMENTAL POLICY ACT (SEPA) FINAL ENVIRONMENTAL IMPACT STATEMENT (EIS) UPDATE FOR CHEHALIS BASIN BOARD

CHEHALIS RIVER BASIN FLOOD DAMAGE REDUCTION PROPOSED PROJECT

April 7, 2022

WHAT THE SEPA FINAL EIS WILL DO

- Provide responses to substantive comments on the Draft EIS from the public, tribes, agencies, and organizations
- Include revisions based on public comment and new information
- Evaluate reasonable alternatives to the proposed project
- Include available information from the Aquatic Species Restoration Plan (ASRP) and Local Action No Dam (LAND) processes
- Identify mitigation plans and measures that would avoid, minimize, or compensate for adverse impacts at a high level (more design, analysis, and modeling will be needed for the specific mitigation included in permits)

HOW WE ARE COORDINATING

- Bi-weekly meetings with the Flood Control Zone District
- Bi-weekly meetings with Washington Department of Fish and Wildlife and Department of Natural Resources for input in their areas of expertise
- Monthly meetings with the USACE to ensure consistency in data and methods
- Ongoing consultation and technical meetings with the Quinault Indian Nation
- Ecology has offered government-to-government consultation to the Chehalis Tribe

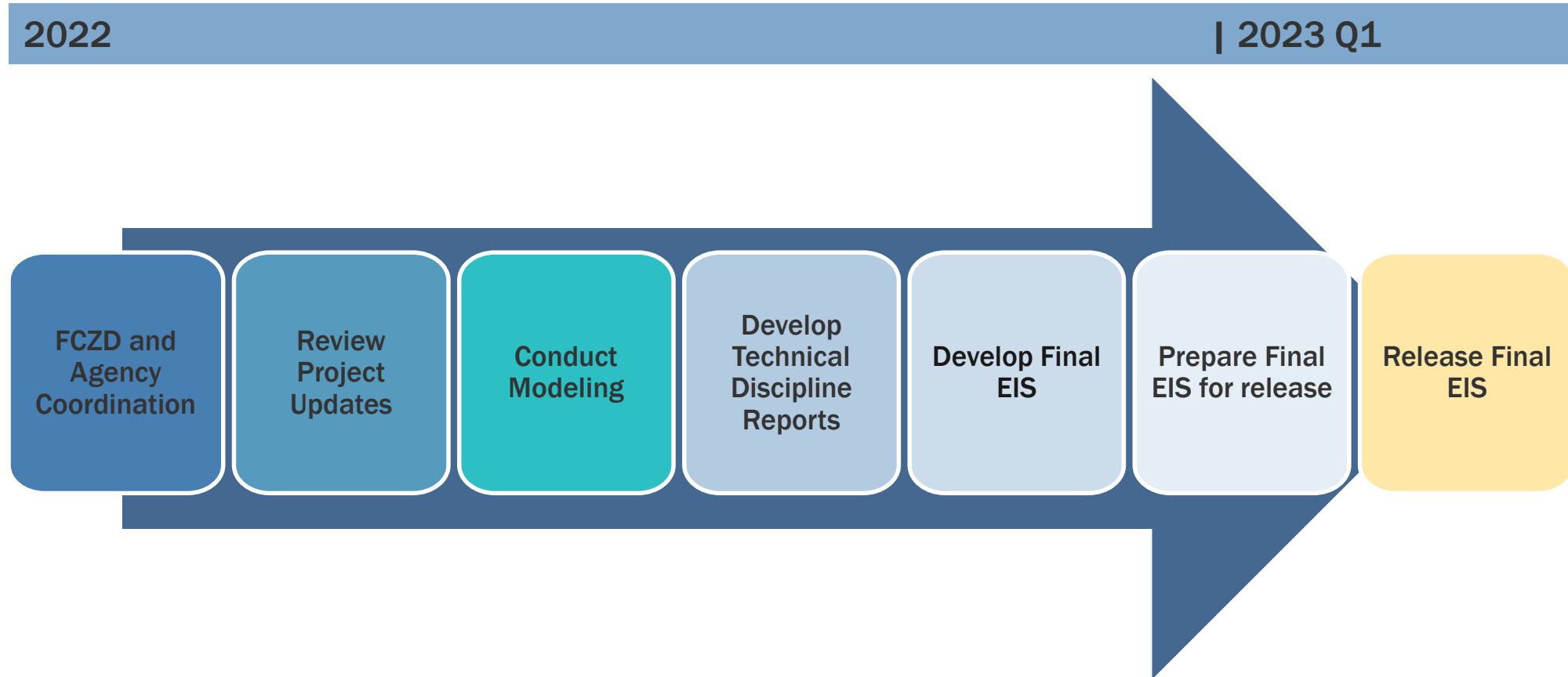
ECOLOGY AND APPLICANT MEETINGS

- Bi-weekly meetings with the Flood Control Zone District (FCZD) on the EIS process and their proposed project
- Extended the Final EIS schedule to provide additional time for the FCZD to develop and provide project updates and clarifications
- Reviewed FCZD project updates and clarifications, including:
 - Vegetation Management Plan
 - Fish passage during construction
- Provided requested data to the FCZD team
- Provided FCZD with information and guidance for their mitigation plan development
 - Reminder: SEPA EIS evaluates the feasibility of the mitigation plans at a high level. Site specific information would be needed for mitigation during the permit phase.

FLOOD CONTROL ZONE DISTRICT PROJECT INFORMATION UPDATES AND CLARIFICATIONS

- December 2021 – *provided information*
 - Vegetation Management Plan
 - Construction, quarry site and roads update
- January and February 2022 – *provided information*
 - Construction fish passage information and design
 - Airport levee design
- May 31, 2022 – Submit mitigation plans to Ecology and USACE
 - FCZD said they intend to combine some topics in one plan
 - DEIS identifies mitigation and management plans

FINAL SEPA EIS TIMELINE



EIS SCENARIOS

The Final EIS will include the same scenarios as the Draft EIS:

- Major flood
 - 38,800 cfs or greater at Grand Mound gage
 - Similar to the 2009 flood
- Catastrophic flood
 - 75,100 cfs or greater at Grand Mound gage
 - Similar to the 1996 flood
- Recurring flood
 - 3 consecutive years of major floods or larger

CLIMATE CHANGE

The Final EIS will include a range of future conditions and potential impacts based on the most recent modeling done by the University of Washington Climate Impact Groups:

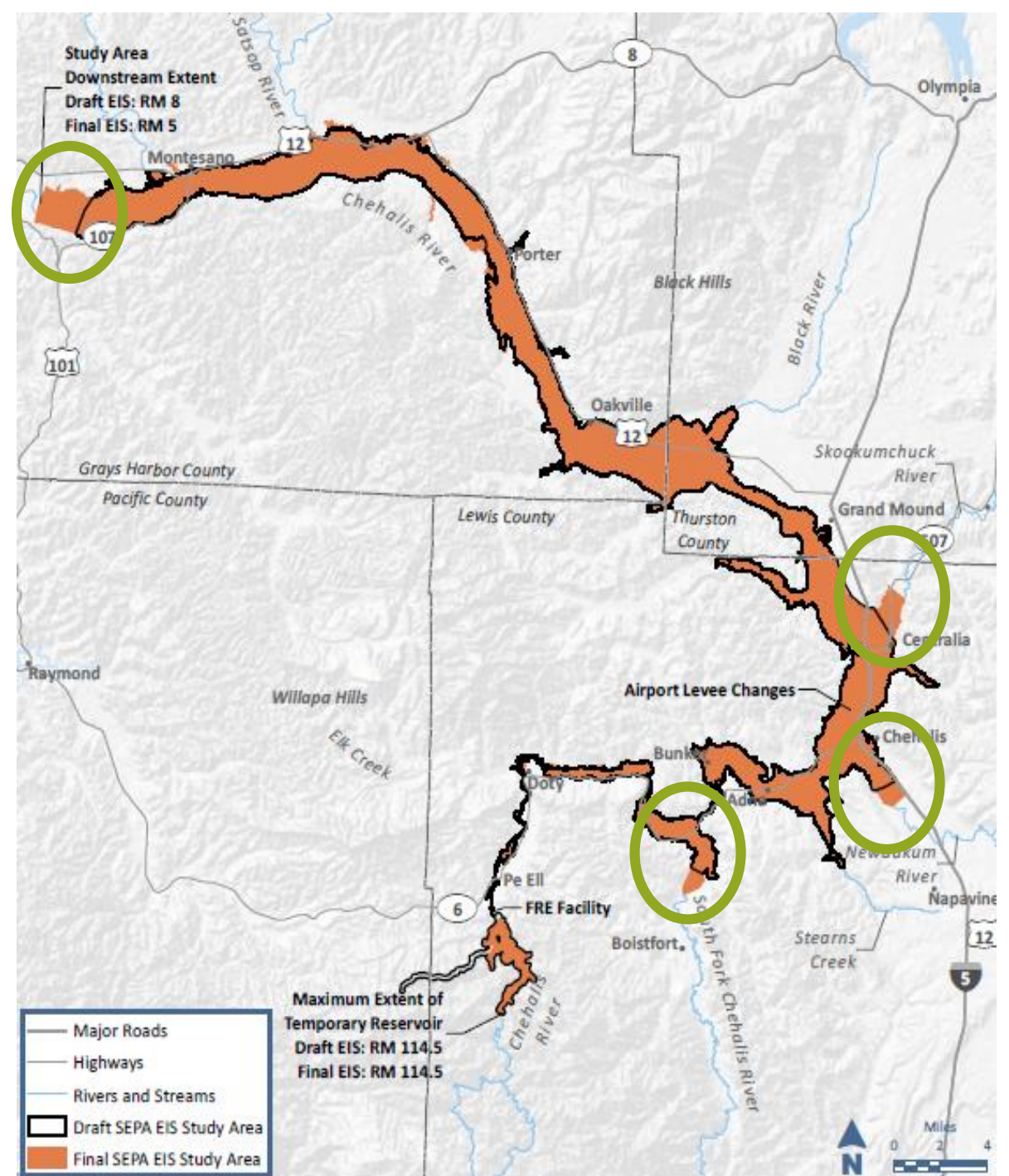
- High-end climate change model
 - Same as used by the Chehalis Basin Board for Strategy and Local Action No Dam work
- Medium (averaged) climate change model
 - Same as in the Draft EIS
- Existing conditions
 - Same as in the SEPA DEIS with updates for new information

ADDRESSING CLIMATE CHANGE UNCERTAINTY

- The Final EIS will include a range of future conditions in the impact analysis
- Proposed mitigation will require use of adaptive management planning to address increases or decreases in impacts over time
 - Monitoring will provide updated, real-world data for decisions
 - Planning will include revising plans to adjust to new data and for contingencies
 - Specific requirements will be identified in permits
- Adaptive management is an approach used to manage under conditions of ongoing uncertainty or expected changes

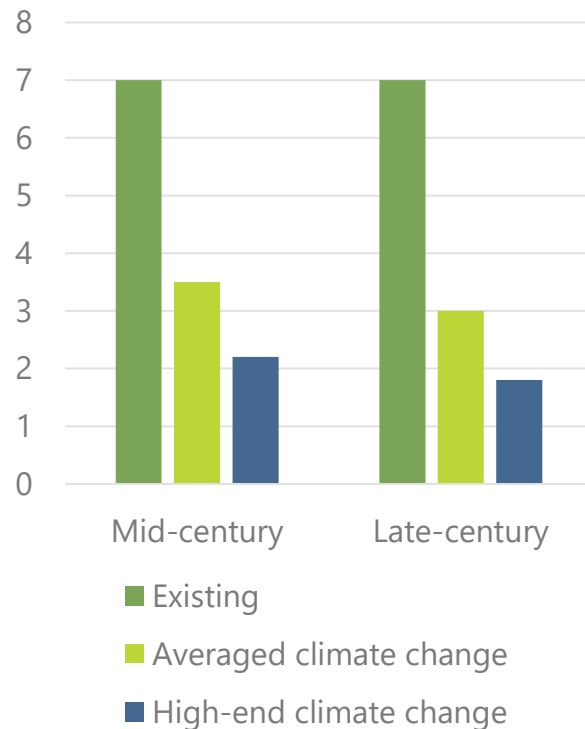
GEOGRAPHIC SCOPE OF SEPA FINAL EIS

The geographic scope of study is based on where probable, significant environmental impacts from the proposed project could occur



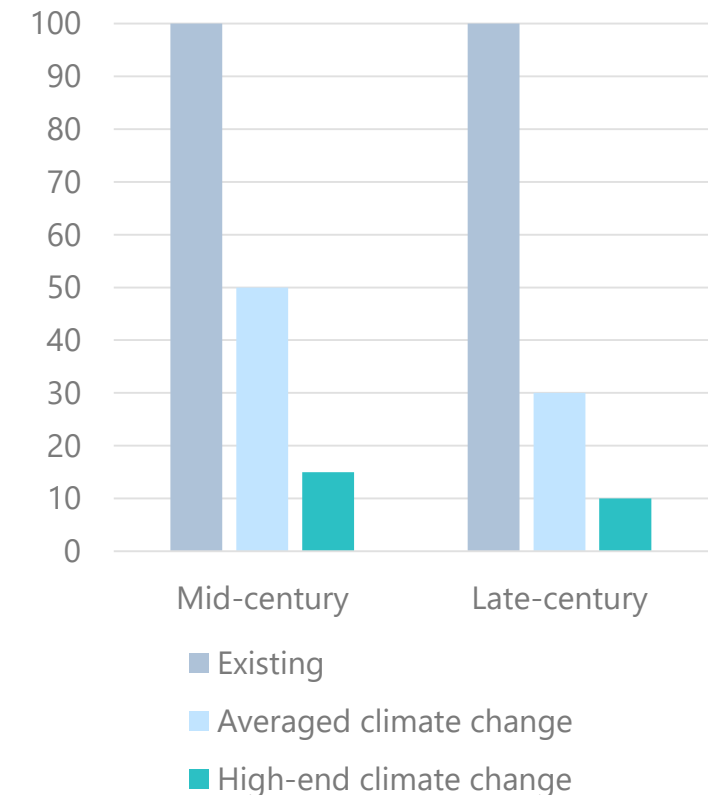
FREQUENCY OF FLOOD EVENTS AND DAM OPERATIONS

Major Flood
(frequency in years)



Using climate change predictions from the Climate Impacts Group, increased precipitation is expected to increase the number of flood events. This would result in triggering the use of the dam more frequently than under current conditions.

Catastrophic Flood
(frequency in years)



SEPA FINAL EIS ALTERNATIVES

- The SEPA Final EIS will analyze the same alternatives as the Draft EIS
 - Proposed Project (dam and airport levee)
 - No Action Alternative
 - Local Actions Alternative
- The No Action Alternative is the expected future if the proposed project is not built
 - Includes new projects and efforts, including funded ASRP projects
 - Includes new information on the ASRP and projects, as available
- The Local Actions alternative is based on local-scale and nonstructural efforts to reduce damage and improve floodplain storage to retain or slow down flood waters
 - Includes information developed for the LAND approach, as available

SEPA FINAL EIS AND PERMITTING

SEPA Final EIS

- Uses early project design without much detail
- Impact analysis at high-level to identify potential areas of concern
- Mitigation plan with general information on addressing impacts
- Agency review of mitigation for feasibility (technical and economic)
- Provides information – NOT a decision

Permitting Processes

- Uses full, detailed project design and engineering specifications
- May require additional baseline and monitoring data
- Detailed impact analysis specific to the type of permit and based on full design
- Site specific mitigation
- Agency approval of mitigation as part of the permit decision-making process

AFTER THE FINAL EIS

- Chehalis Basin Board can use information from the SEPA and NEPA Final EISs to consider for decisions
- NEPA Final EIS
 - Develop the Record of Decision
- SEPA Final EIS
 - Used by agencies for information on permitting decisions after applications submitted
 - Permits would need additional project information, updated data, and detailed mitigation plans

WHERE TO FIND INFORMATION

Information about the SEPA EIS is available at:

Chehalis Basin Strategy website

<http://chehalisbasinstrategy.com/eis/sepa-process/>

Ecology's website

<https://ecology.wa.gov/About-us/Get-to-know-us/Our-Programs/Office-of-Chehalis-Basin/EIS>

Questions?

Please contact Diane Butorac, 360-407-6573 or diane.butorac@ecy.wa.gov