



# BPA 101/Irrigation Rates

Adriana Rasmussen, WA Liaison; Regional Relations

CRPAG  
July 31, 2025



# Introduction to Bonneville

- Markets power from 31 Federal hydro plants and CGS
- Owns no power generators
- Owns and operates 15,000 miles of transmission
- Accounts for about 32% of power consumed in PNW
- Recovers all costs from power and transmission sales

**Federal Columbia River Power System**  
**Columbia River Basin & BPA Service Area**



# Bonneville's Mission

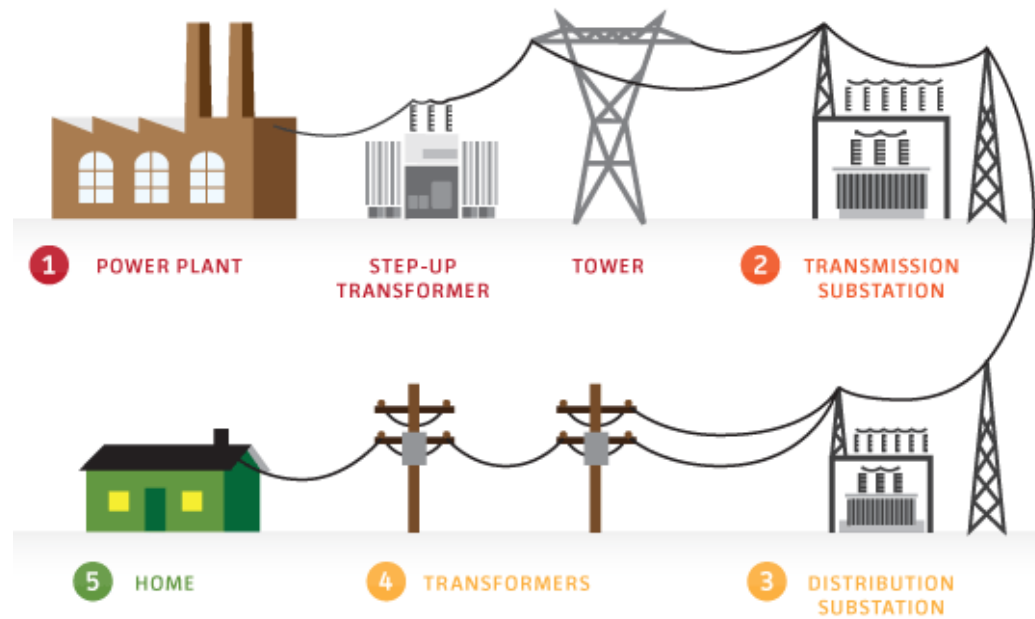
The Bonneville Power Administration's mission as a public service organization is to create and deliver the best value for our customers and constituents as we act in concert with others to assure the Pacific Northwest:

- An adequate, efficient, economical and reliable **power** supply
- A **transmission** system that is adequate to the task of integrating and transmitting power from the federal and non-federal generating units, providing service to BPA's customers, providing interregional interconnections, and maintaining electrical reliability and stability; and
- Mitigation of the impacts on **fish and wildlife** from the federally owned hydroelectric projects from which BPA markets power

# Bonneville's Customers

- Consumer Owned Utilities (COUs)
  - Entitled to statutory preference; cost-based rates
  - Includes municipalities, Public Utility Districts, Cooperatives, Tribal Utilities
- Investor-Owned Utilities (IOUs)
  - Entitled to Residential Exchange Program rate offset to residential/farm load
  - Includes PGE, PSE, PacifiCorp, Avista, Idaho Power
- Direct Service Industries
  - Only one left (Port Townsend Paper)
- Sales Outside of the PNW
- Transmission Service
  - Network and Point to Point

# Electric Transmission Overview



# Power Sales Contracts

- Provider of Choice (POC) is Bonneville's Post-2028 process to design and offer replacement power sales agreements, ahead of when the current long-term Regional Dialogue contracts expire in 2028
- POC contracts will be executed 31 December, 2025

# Irrigation Rate Discount

- BPA is not required by statute to provide IRD
- IRD is a discount to eligible customers (not end users) serving a seasonal irrigation load
- BPA power customers must meet certain criteria
- Currently provide approximately \$22 million in benefits to 30 customers
- Reach out to your local utility to find out if they receive or are eligible to receive IRD from BPA

IRD Customer List	
Benton PUD	X
Benton Rural Elect. Assoc.	X
Big Bend Electric Coop.	X
Central Electric	X
Columbia Basin Coop.	X
Columbia Power Coop.	X
Columbia REA	X
East End Mutual Elect.	X
Fall River Electric Coop.	X
Franklin PUD	X
Harney Electric Coop.	X
Inland Power & Light	X
Klickitat	X
Lost River Electric	X
Midstate Electric Coop.	X
Mission Valley Power	X
Nespelem Valley Electric	X
Okanogan County PUD	X
Oregon Trail Electric Coop.	X
Raft River Electric	X
Riverside Electric Co.	X
Salmon River Electric	X
South Side Electric	X
Surprise Valley Electric	X
Umatilla Electric	X
United Electric Coop.	X
Vigilante Electric Coop.	X
Wasco Electric Coop.	X
Wells Rural Electric Co.	X
Yakama Power	X
Total IRD Customers: 30	

# Project Reserve Power

- Project Reserve Power is Federal Power reserved for irrigation
- This legislation is not directed at BPA, but BOR
- Cost of power varies by project
- BPA role is limited to delivery of project reserve power
- BPA markets and sells EXCESS power
- Discuss with BOR whether project fits into existing legislation; seek expanded congressional authorization



# Questions

## **Follow-Up?**

Adriana Rasmussen  
Washington Liaison  
(509) 433-6266

[AMRasmussen@bpa.gov](mailto:AMRasmussen@bpa.gov)



**Bonneville**  
POWER ADMINISTRATION

[BPA Facts](#)