

Chehalis Basin Hatchery Operations and Harvest Management

Ron Warren
Director of Fish Policy



Overview of Briefing

- **Hatchery Operations**
- **Harvest Management**
- **Questions**





Hatchery Operations

Hatchery Operations

- **Early 2000's review of each program conducted by the Hatchery Scientific Review Group**
 - Develop clear goals for programs, both conservation and harvest
 - Be scientifically defensible
 - Use adaptive management to make adjustments in programs
- **2009 Fish and Wildlife Commission Policy Hatchery and Fishery Reform**
- **Implementation and Reporting**

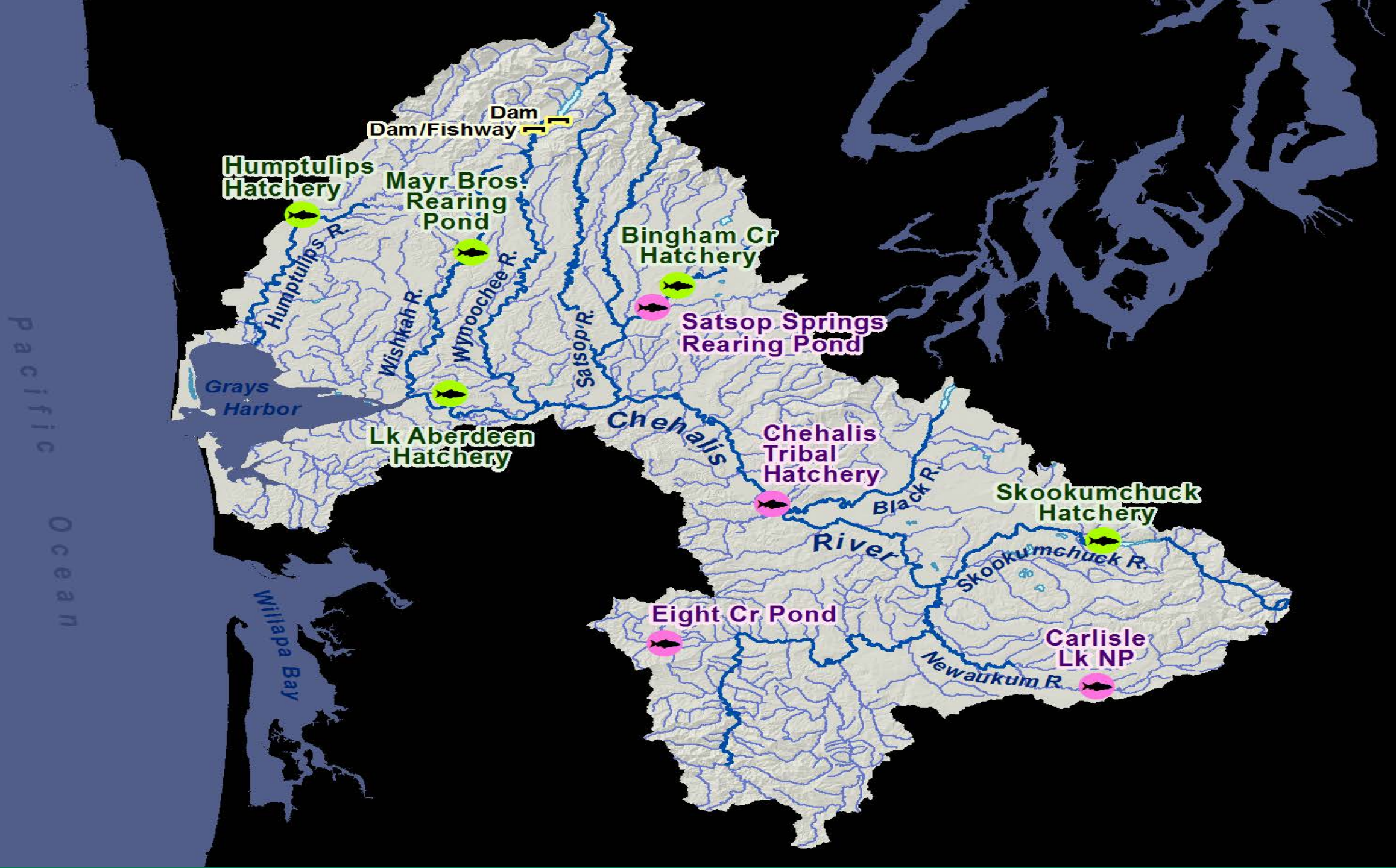


Hatchery Operations

June 2018 Commission Request

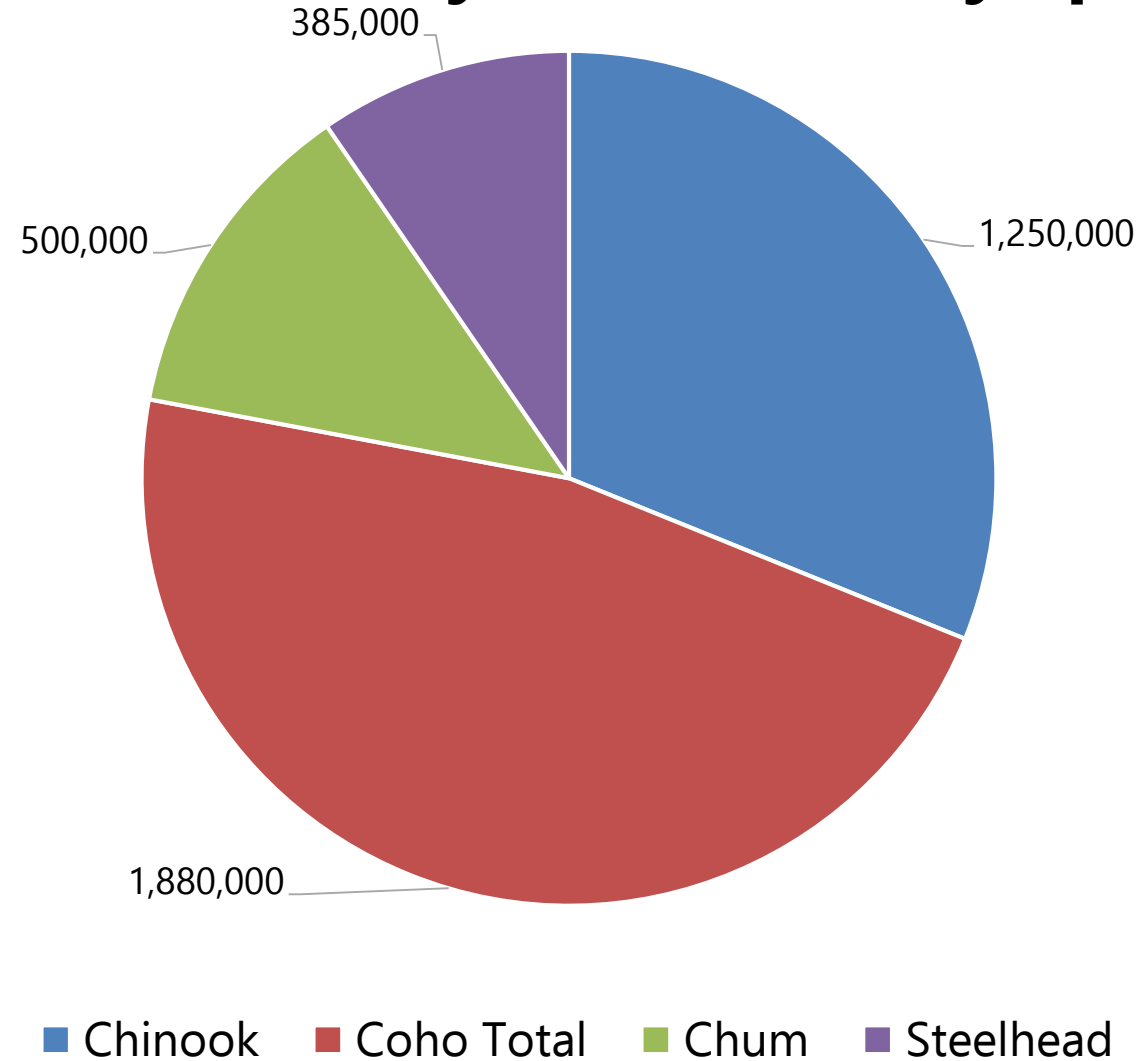
- **Thorough Review of the Hatchery and Fishery Reform Policy**
 - Science and Implementation
- **Draft Anadromous Salmon and Steelhead Hatchery Policy**
 - Currently under development
 - Targeted Completion April 2021





Hatchery Operations

Total Hatchery Production by Species





Harvest Management

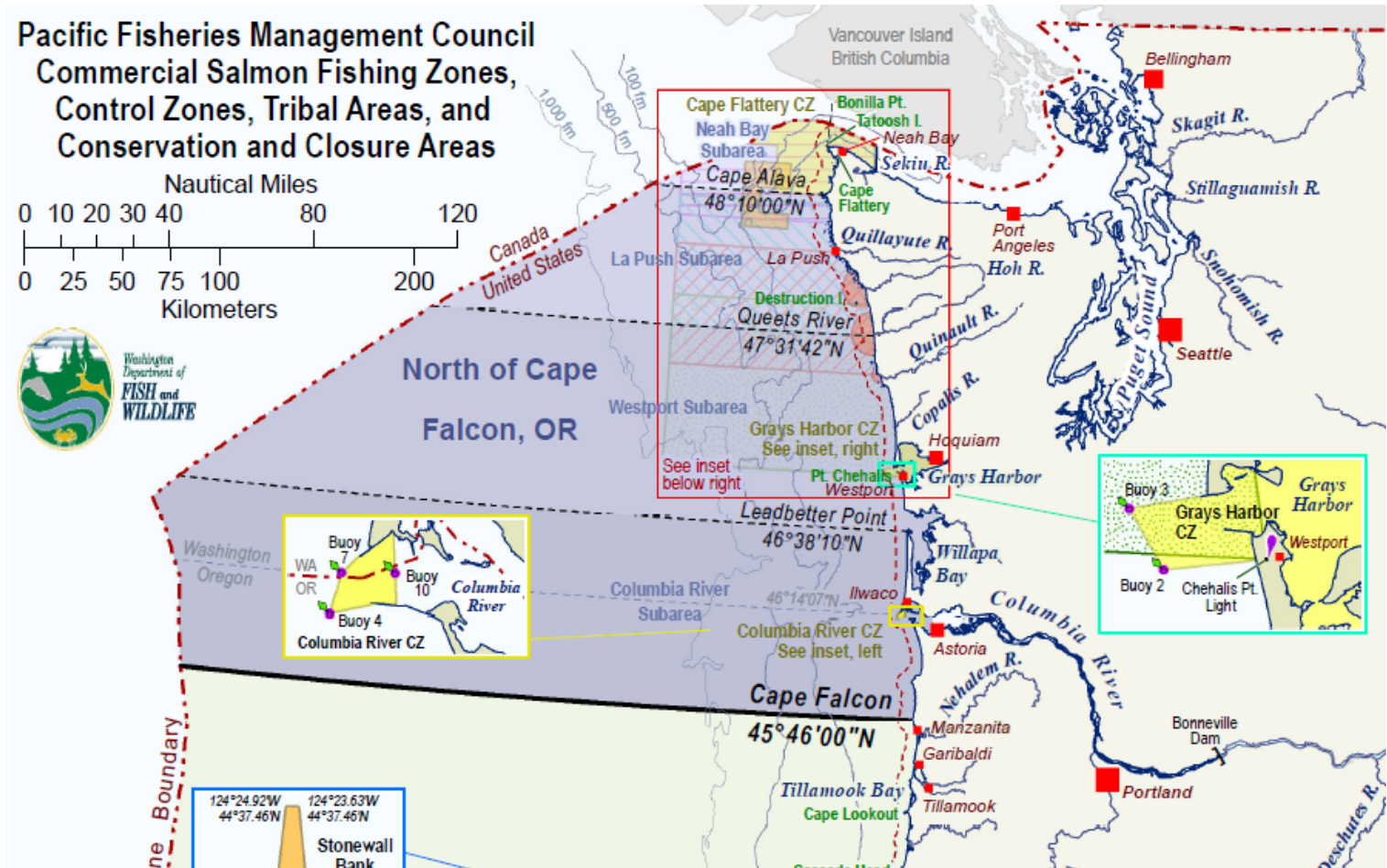
Management landscape



North of Falcon Process

An intensive 7-week process to set salmon fishing seasons in the area north of Cape Falcon, OR

- 5 species
- >25 tribes
- Pacific Salmon Treaty
- Magnuson-Stevens Act
- Federal Court Decisions
- ESA Requirements
- FWC Policies
- State Law



Harvest Management

Grays Harbor Basin Salmon Management

Policy number C-3621

Effective date Feb 28, 2014

Termination date Dec 30, 2023

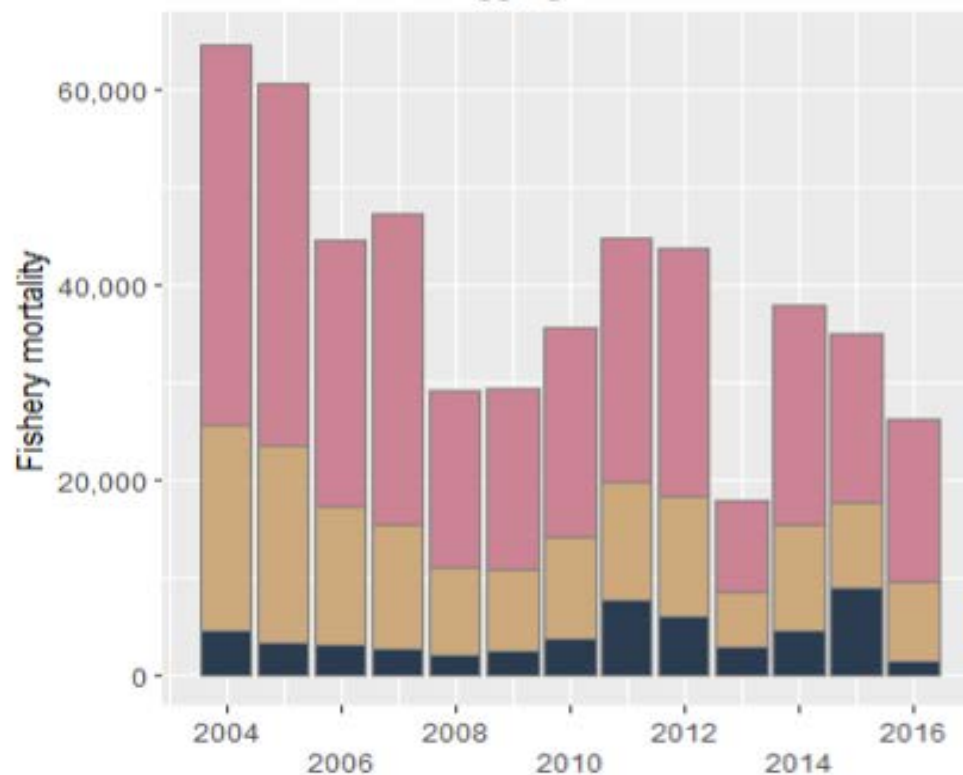
Purpose

The objective of this policy is to advance the conservation and restoration of wild salmon. Where consistent with this conservation objective, the policy also seeks to maintain or enhance the economic well-being and stability of the fishing industry in the state, provide the public with outdoor recreational experiences and a fair distribution of fishing opportunities throughout the Grays Harbor Basin, and improve the technical rigor of fishery management. Enhanced transparency and information sharing are needed to restore and maintain public trust and support for management of Grays Harbor salmon fisheries.

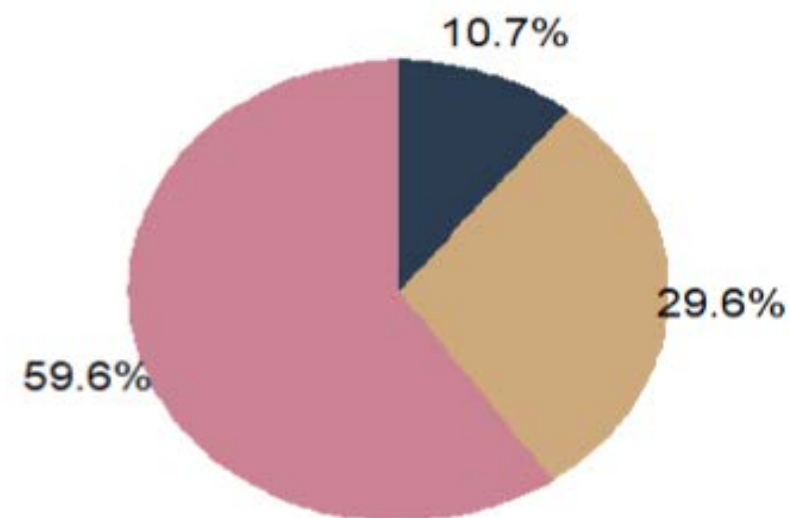


Harvest Management

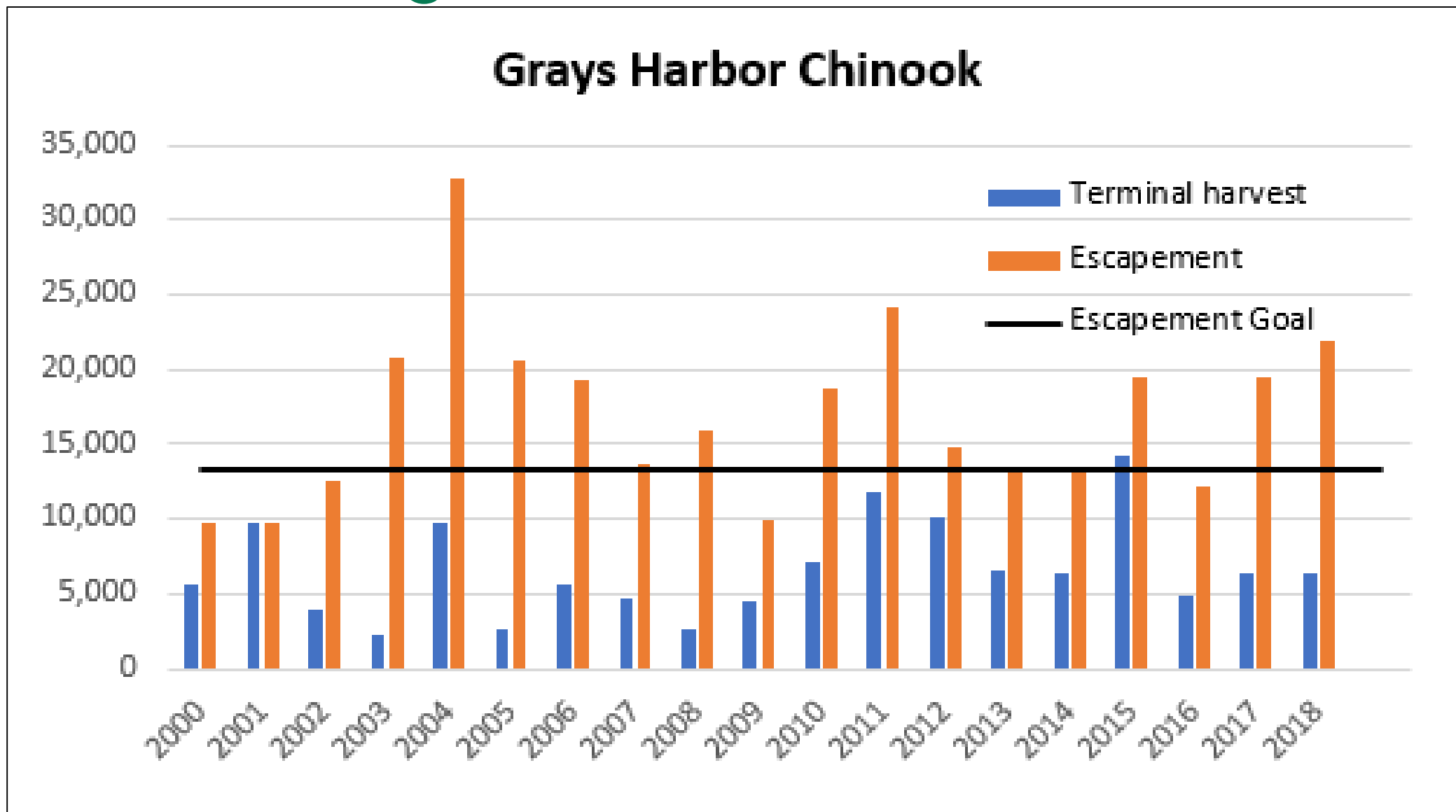
Chinook FRAM post-season mortality estimate
WA N Coast stock aggregate



Average mortality proportion since 2004

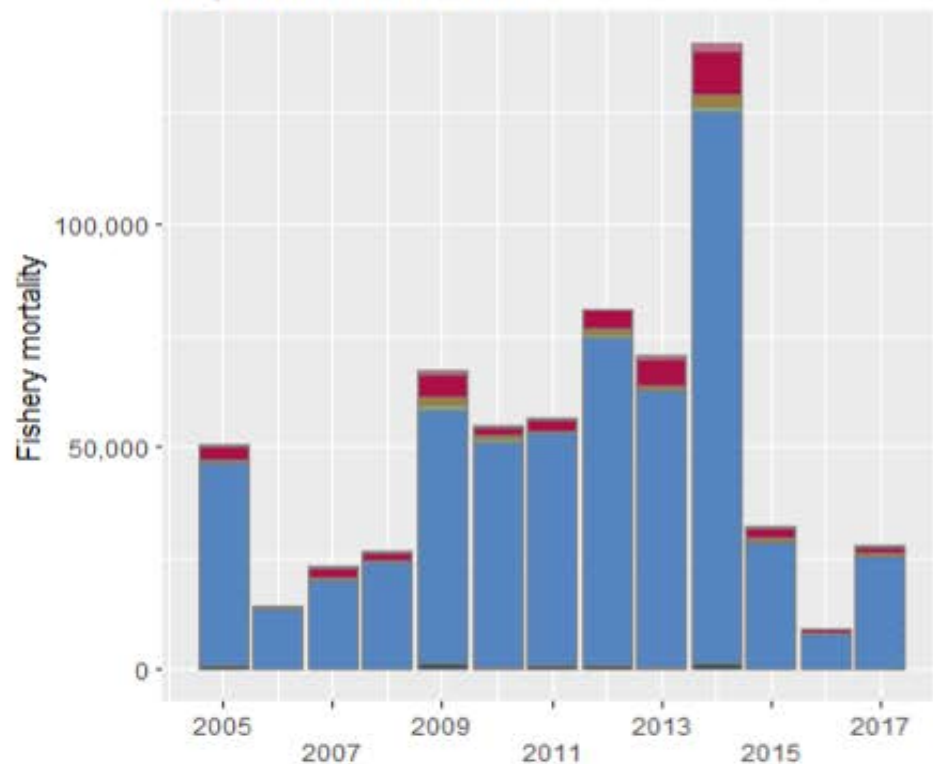


Harvest Management

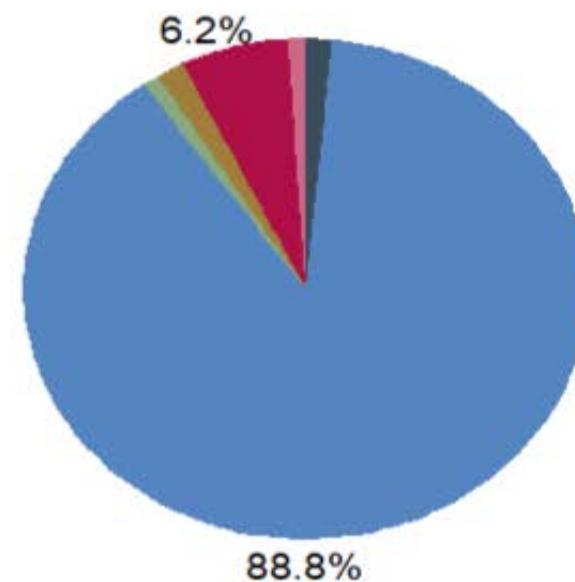


Harvest Management

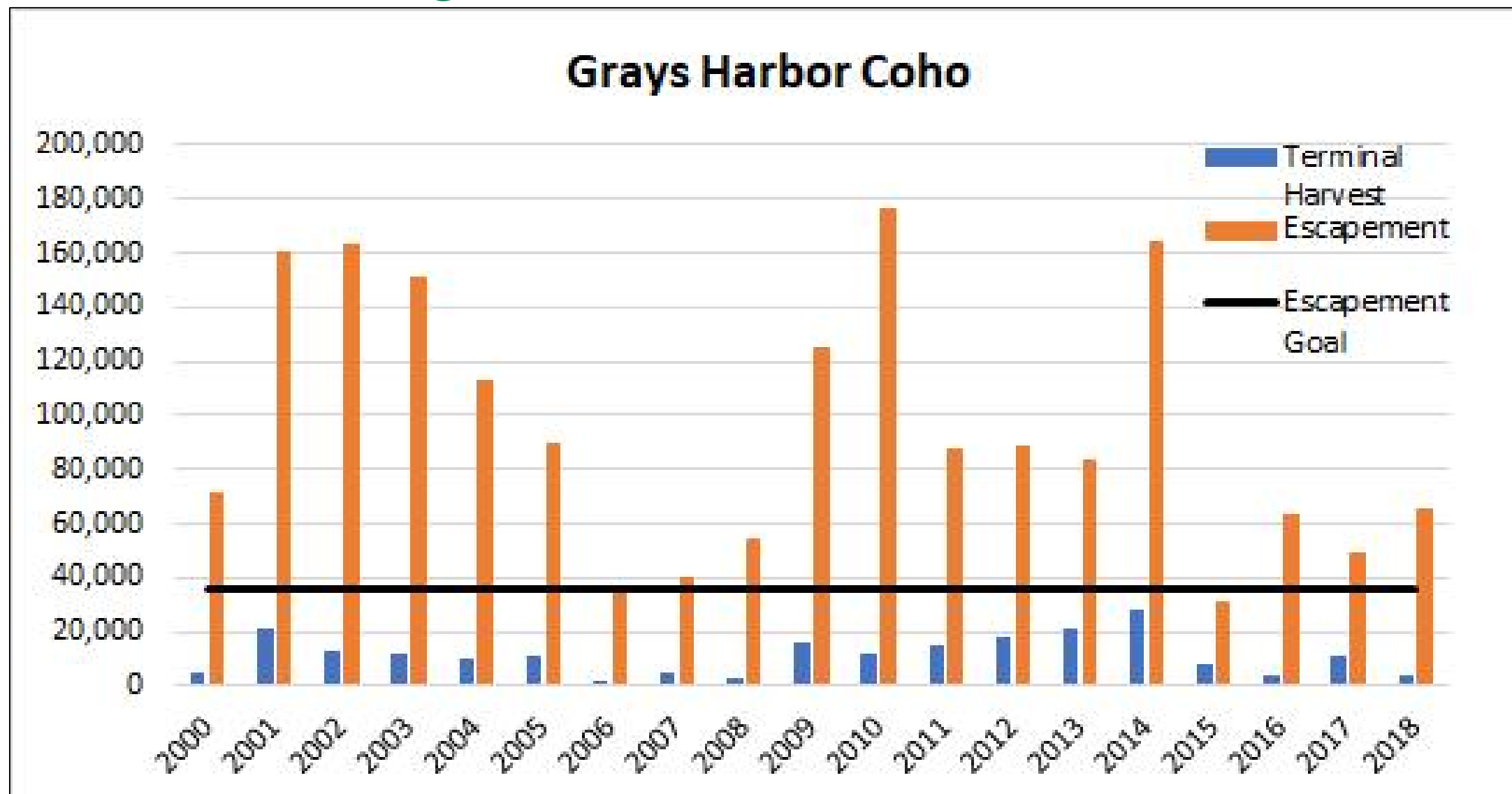
Coho FRAM post-season mortality estimate
Grays Harbor stocks, H+W



Average mortality proportion since 2005



Harvest Management



Harvest Management

- Fishery and hatchery management measures should be implemented as part of an "all-H" strategy that integrates hatchery, harvest, and habitat systems.
- Fishery management must evolve to protect and restore wild salmon and steelhead.
- WDFW shall manage salmon and steelhead to recovery & sustainability in a way that is science-based, well-documented, transparent, well-communicated, and accountable.
- Future fishing opportunities will increasingly depend on our ability to focus fisheries on hatchery-produced fish while meeting or exceeding ESA, recovery, or conservation goals for wild salmon and steelhead.



Questions?

