

The Chehalis Basin Strategy

The Chehalis Basin Strategy is **a group of ongoing actions for concurrent flood damage reduction and aquatic habitat improvement.**

The Strategy is considering many separate but coordinated actions, including:

- Restoring rivers and their floodplains
- Elevating structures
- Floodproofing buildings
- Building levees
- Damming the mainstem Chehalis River
- Improving flood warning system and evacuation routes
- Building farm pads

These actions will be implemented by the Strategy's participants, including local landowners, conservation districts, counties, municipalities, and tribes.



Farm Pad Lewis County Conservation District, 2013.

HOW MIGHT THE CHEHALIS BASIN STRATEGY AFFECT THE COMMUNITY IN THE NEWAUKUM RIVER AREA?

Chehalis Basin Strategy work in the Newaukum River basin is focused on three components:

1. Restorative Flood Protection technical feasibility study – analyzing whether this approach is technically possible.
2. Restorative Flood Protection community feasibility study - meeting with landowners and the community that live in the Newaukum basin, to determine whether they are open to selling or providing an easement on their land for this use.
3. Aquatic Species Restoration Plan development – The Newaukum River valley is an early action focus area for stream and floodplain projects to improve habitat for fish and other aquatic animals.

WHAT YOU NEED TO KNOW ABOUT RESTORATIVE FLOOD PROTECTION

- In areas with large floodplains, like the Newaukum River valley, Restorative Flood Protection has proven effective at reducing downstream flood flows by storing floodwaters upstream (Watson et al., 2016).
- Bank erosion has increased along the Newaukum River in recent years. Under current conditions, the river is unstable due to higher flows, lack of wood in the channel, and unvegetated river banks. Restorative Flood Protection could help compensate people who are losing land to bank erosion.
- Private property impacts are a primary consideration. Restorative Flood Protection relies on private and public property owners who are willing to sell or lease the right to increase flooding on their land.

Restorative Flood Protection*

HOW RESTORATIVE FLOOD PROTECTION WORKS

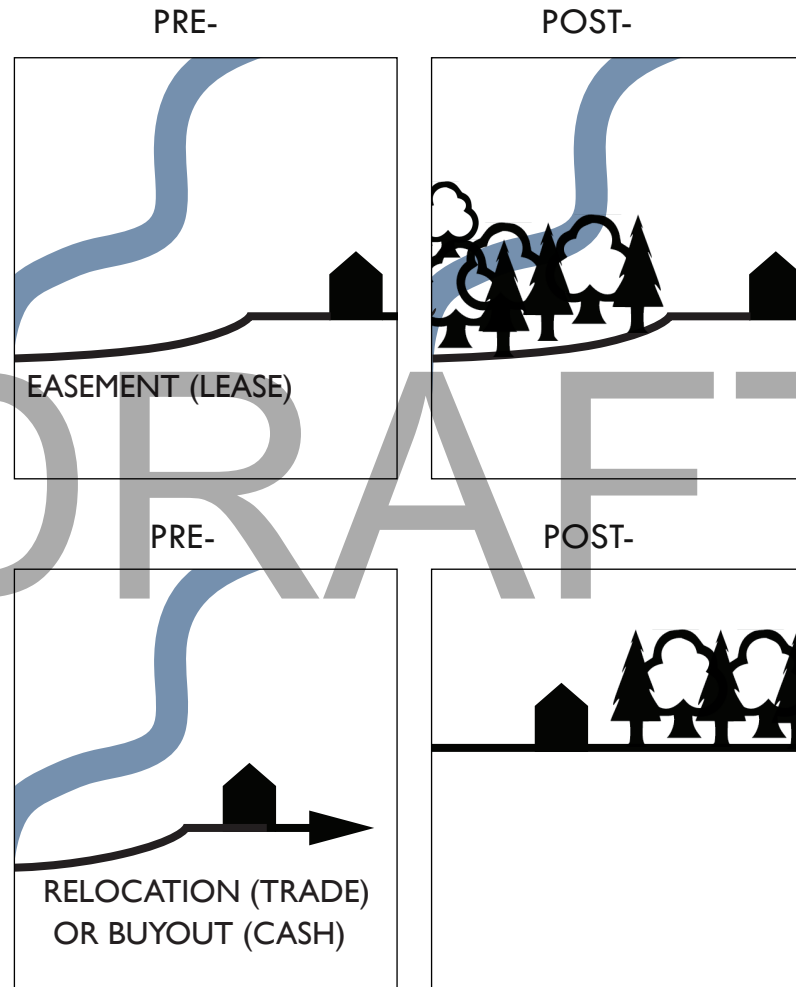
Adding large amounts of wood to river channels and planting dense vegetation on floodplains, slows and stores flood waters in the channel and on the floodplain, increases local flooding by a few inches to several feet, stabilizes river banks, and decreases downstream flooding.

Landowner involvement and input is needed to improve our understanding of local interests and willingness to participate in easement, relocation, or buy-out compensation options.

For more information, please visit chehalisbasinstrategy.com

Questions? Please feel free to contact Chrissy Bailey, chrissy.bailey@ecy.wa.gov, or (360) 407-6781.

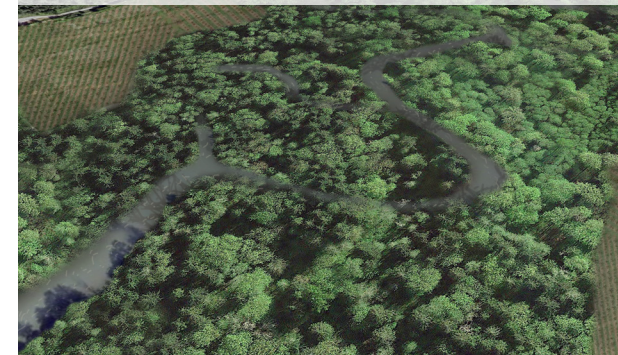
POTENTIAL LANDOWNER COMPENSATION OPTIONS:



Conceptual Pre-Restorative Flood Protection illustration, including channel cleared of wood, little to no forest on the river banks, no side-channels, sloughs or wetlands, and no seasonal floodplain engagement.



Conceptual Restorative Flood Protection illustration, including wood in the channel, mature forest on the river banks, diverse network of side-channels, sloughs and wetlands, and seasonal floodplain engagement.



**This is a study only. There are no current plans to construct Restorative Flood Protection.*

Bottom and top right illustrations are from the 2017 Chehalis Basin Programmatic Environmental Impact Statement.