

The background image shows a rural landscape with a large body of water, likely a flooded field or river. In the middle ground, there is a barn and a water tower. The trees are bare, suggesting a late autumn or winter setting. The sky is overcast. The image is framed by a green header bar at the top and a blue footer bar at the bottom.

# Proposed Chehalis River Basin Flood Damage Reduction Project

Construction Phasing - Fish Passage

Chehalis River Basin Flood Control Zone District

May 2, 2024

# District Presentations to OCB



**April**

Overview of Engineering Changes



**May**

Fish Passage During Construction

**June**

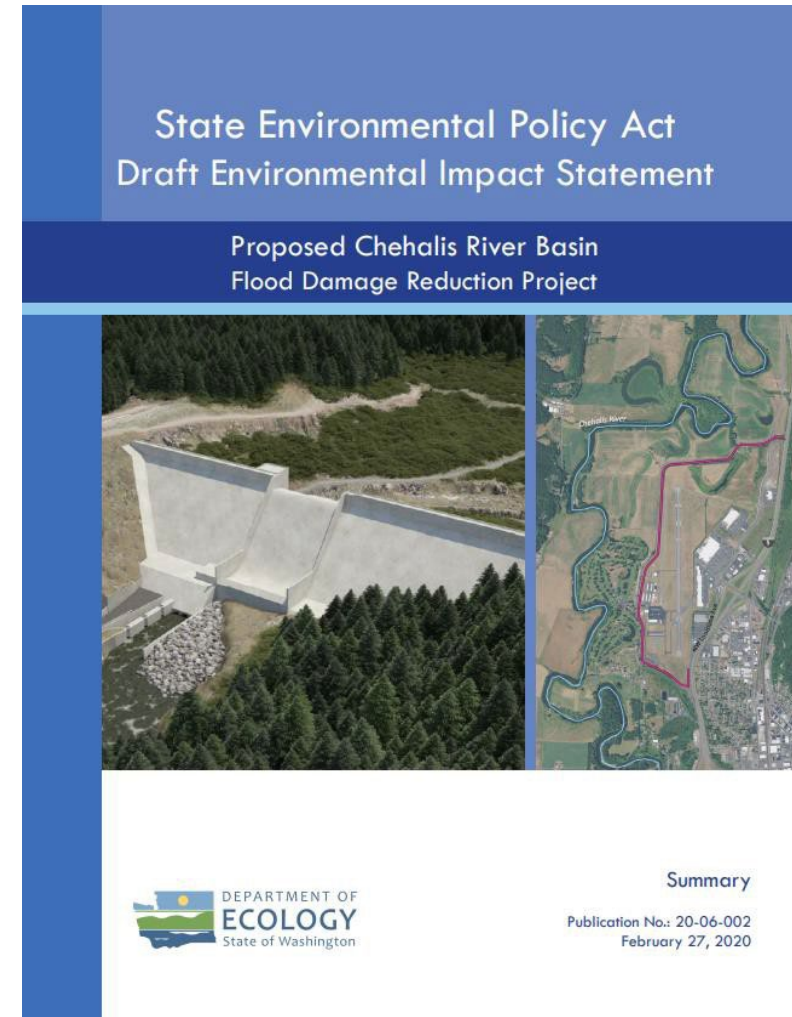
Fish Passage Conduits

**Future**

Mitigation Plan Updates

# Construction Design Benefits

- Construction revised to address fish passage impacts on several fish species identified in the DEIS
- Realignment addresses impacts
  - Allows for 100% voluntary fish movement
  - Promotes long term survivability of fish populations



## Construction: Overview of Presentation

Phases of Construction

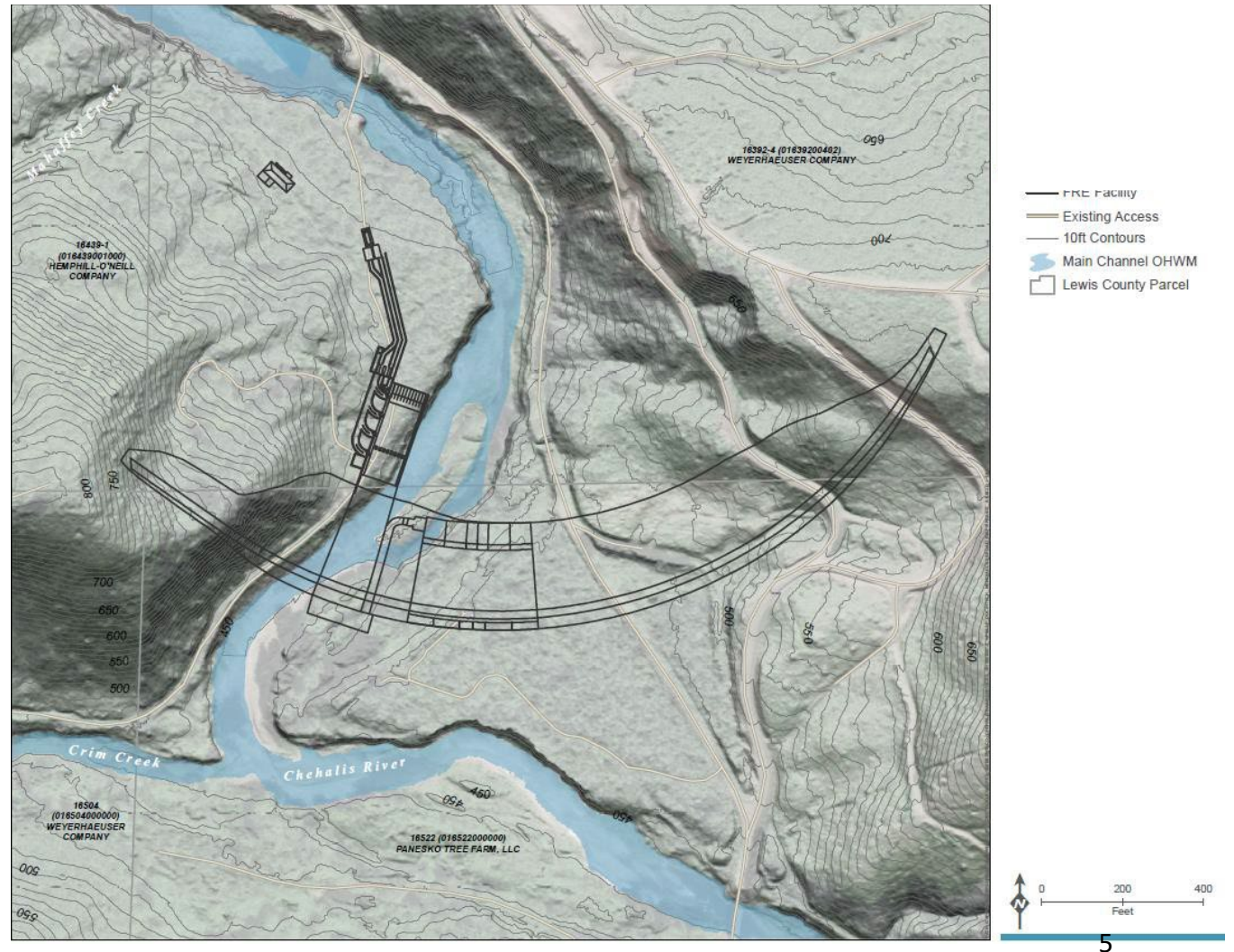
Construction Timeline

Reduced Impacts on Fish

Q&A

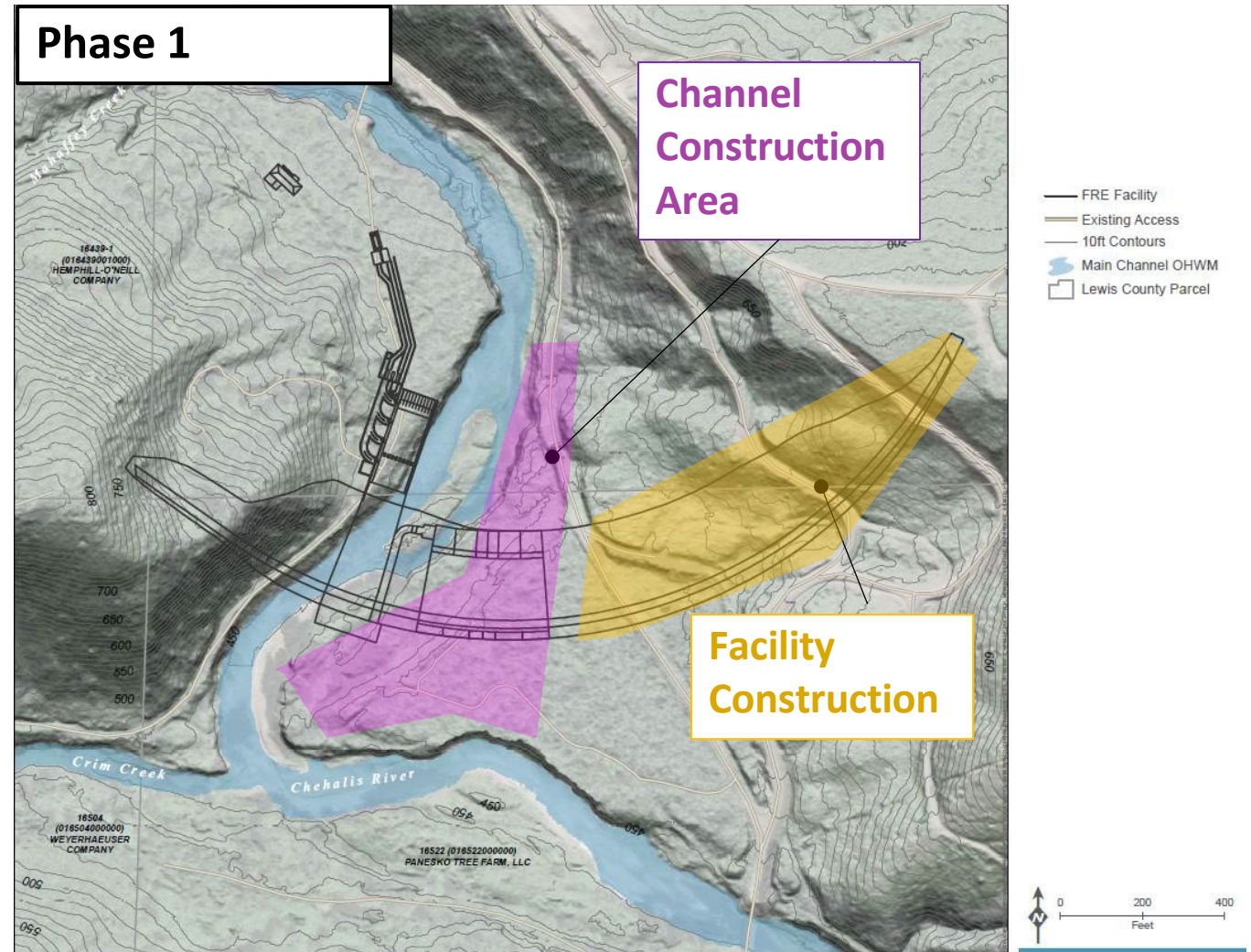


# Phase One (10-12 Months)



# Phase One (10-12 Months)

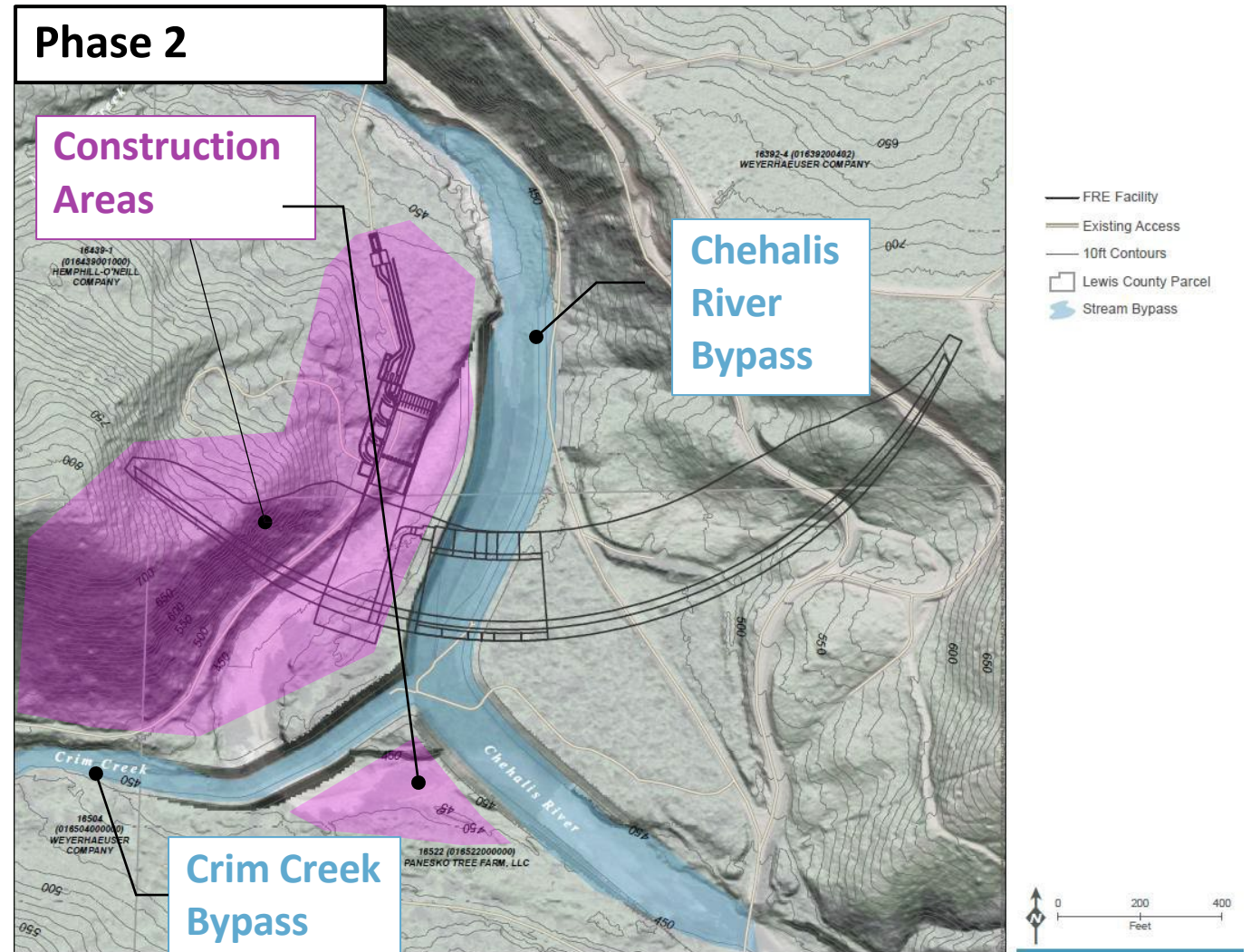
- Site preparation
- Right side foundation construction
- Chehalis and Crim Creek bypass channel construction





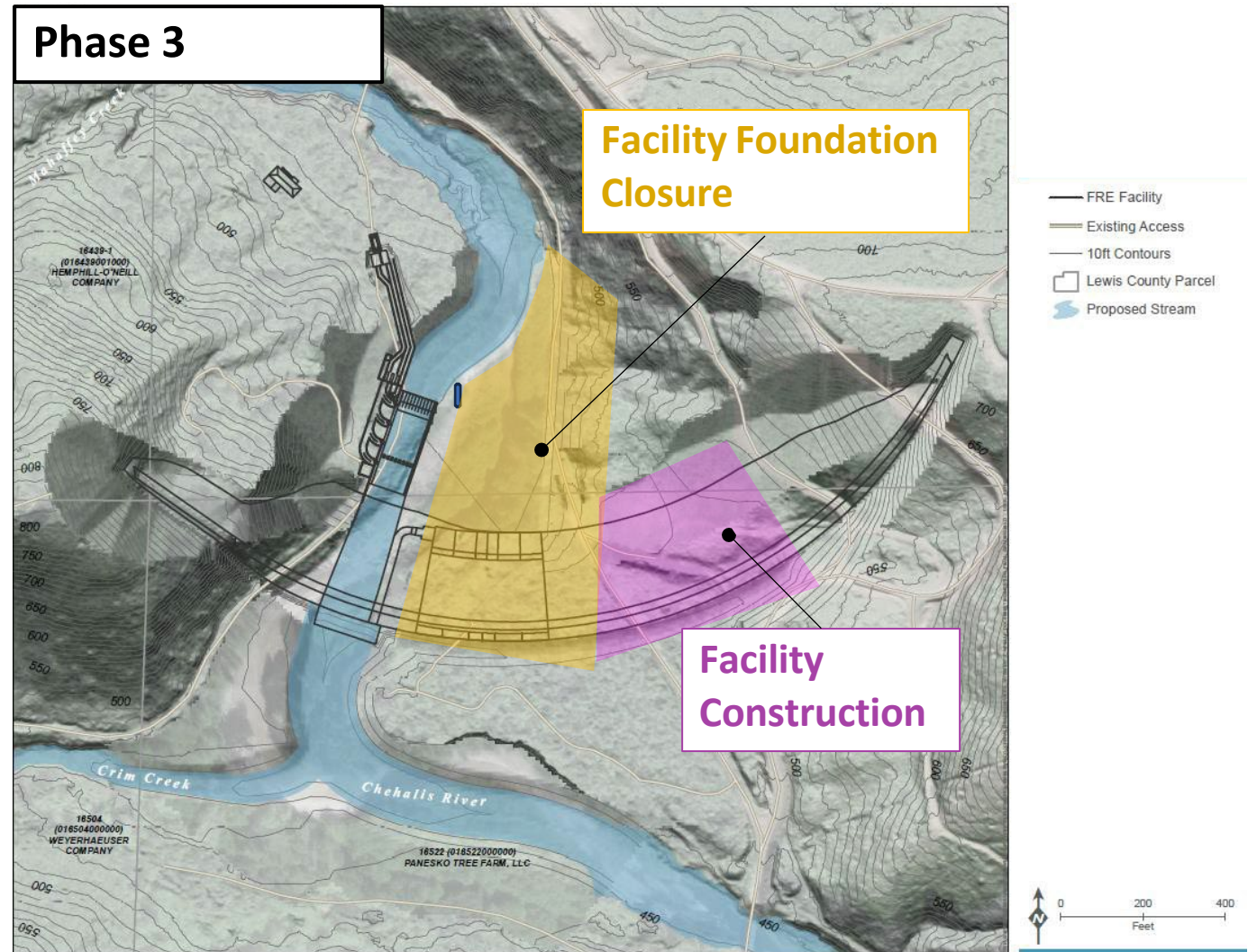
# Phase Two (20-24 Months)

- 100% voluntary fish movement
- Outlet works construction
  - Includes conduits
- Left side foundation construction
- Grading



# Phase Three (10-12 Months)

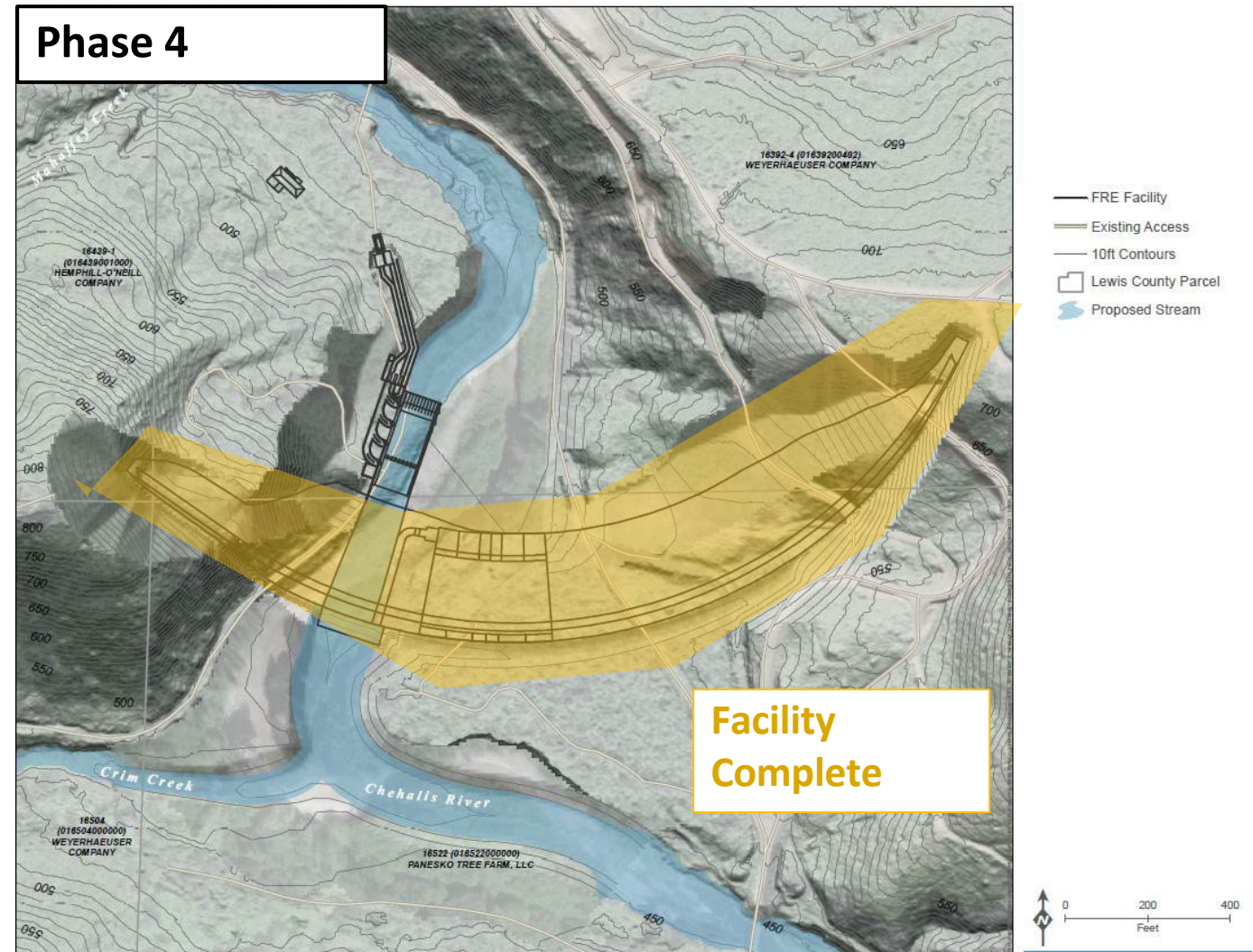
- Remove bypass channel and restore vegetation
- Foundation closure - connect left and right foundations



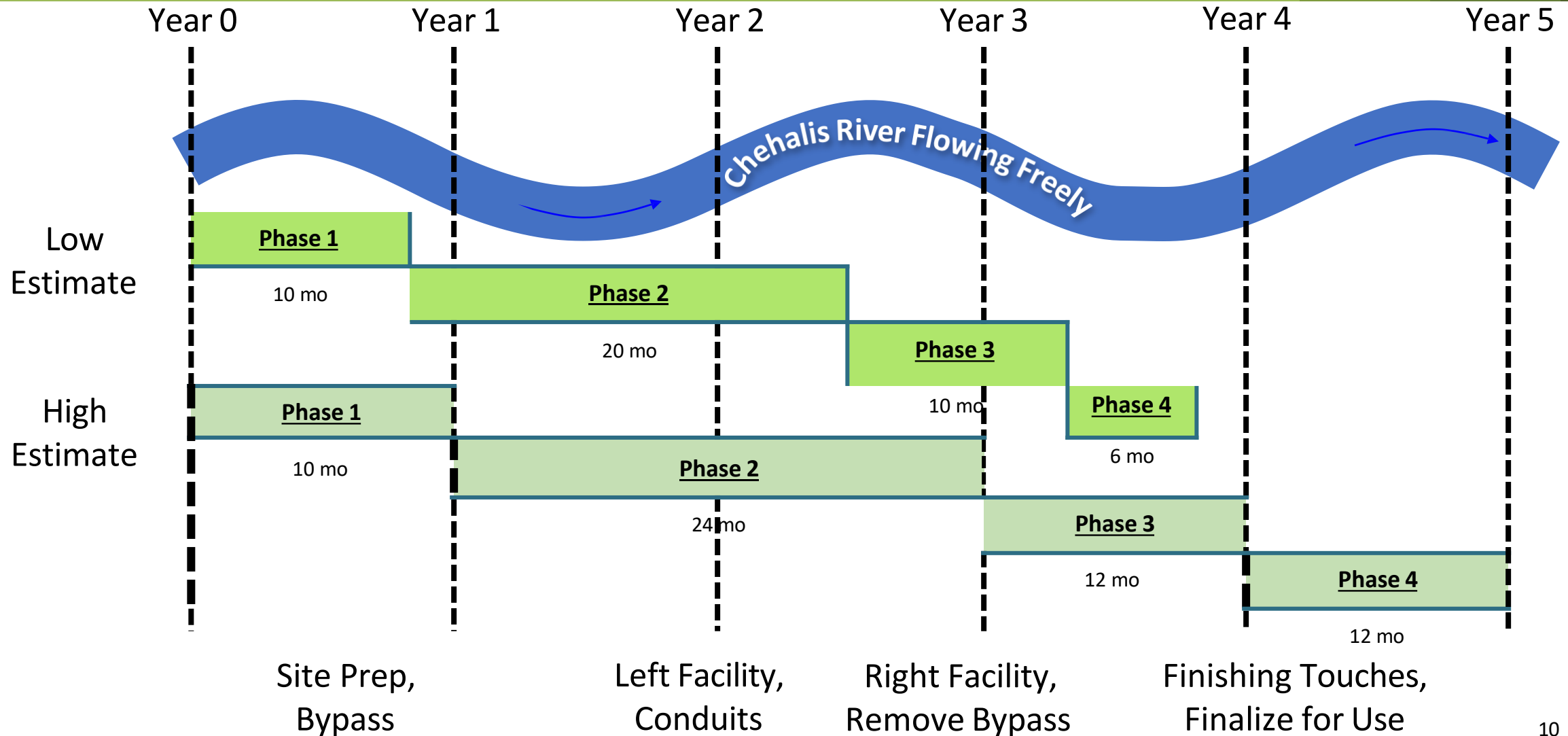


# Phase Four (6-12 Months)

- Complete facility construction
- Finishing touches
- Finalize the facility for use



# Estimated Timeline





# Reduced Impacts to Fish

---

- Construction revised to address fish passage impacts on several fish species identified in the DEIS
- Realignment addresses impacts
  - Allows for 100% voluntary fish movement
  - Promotes long term survivability of fish populations





# Questions

---

