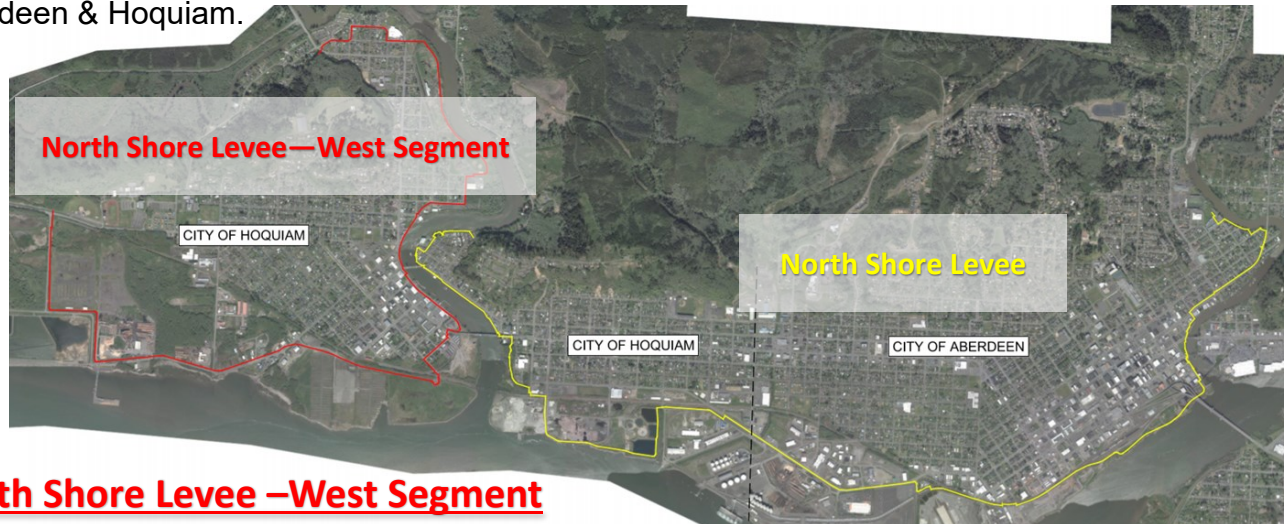


Aberdeen-Hoquiam Flood Protection Project

North Shore Levee – West Segment



The Aberdeen-Hoquiam Flood Protection Project is comprised of two critical levees, the North Shore Levee and the North Shore Levee –West Segment, which are needed to protect the Cities of Aberdeen & Hoquiam.



North Shore Levee –West Segment

Investment Request: \$4 million, Office of Chehalis Basin

The North Shore Levee—West Segment, which is estimated to cost \$40 million, will construct a levee (earthen, concrete and sheet pile) for 4.7 miles bordering the west side of Hoquiam. This levee will protect local residents and build resiliency in the face of future flood events, as well as retain existing businesses, jobs and residents which have been on the decline in this community.

The \$4M will be used to complete final design and right of way acquisition to achieve shovel ready construction status by 2023. A conditional letter of map revision was submitted to FEMA with preliminary engineering reports in 2020.

The North Shore Levee—West Segment, will:

- Remove \$1 million in annual flood insurance premiums from the community
- Protect 2000 properties and 360 businesses
- Maintain 450 jobs & create new jobs
- \$200 million in public and private investments protected

Despite paying for flood insurance, over the last 40 years, less than \$2M in total insurance claims have been paid out to the community.



Employment Impacts

Grays Harbor County is one of the most economically disadvantaged communities in Washington State, with many residents burdened by flood insurance premiums. City of Hoquiam:

- ♦ Current employment: **2,800**
- ♦ Current businesses: **360**
- ♦ In the last 4 years alone, Hoquiam has lost approximately **300** jobs

We believe some of these 300 jobs could have been retained if businesses and employees were not spending funds on insurance premiums for their offices and homes.