

# Puyallup Water Quality Partnership Annual Meeting

This manure pile is 5-6  
feet high and about 20  
feet wide!

Many slides inspired by/courtesy of Floodplains by Design's 2021  
'Collaboration Campfire' series. Liberating Structures ideas available at  
<https://www.liberatingstructures.com/6-making-space-with-triz/>



# Chatterfall

I'll give you a prompt.

You type your answer in the chat box, BUT DON'T HIT ENTER until I signal.

When I say **enter**, scroll back and read a few entries.



# Chatterfall

1. What are some of the barriers to effectively using monitoring data to implement the Puyallup and LWR TMDLs?
2. Where is my agency (or this group) succeeding in using the data to inform our implementation?
3. What I most want to practice, improve or change regarding using the data to inform implementation is...



# Years 1-5 Water Quality Data-

*Thoughts, questions, “ah ha”s, critical gaps, red flags?*

As implementers, consider what these data might mean for sources.

# Specific ?s from Julian

- 1) High hits in spring. When are manure applications happening, and where?
- 2) Drainage infrastructure in areas with high wet season pollution?
- 3) What’s up with Year 5 on Boise?

Notes: Not much irrigation in this basin unless you count big gun manure application (which is more manure management)-- so the dry season counts in Boise prob more from livestock access to streams

Not really. I use this data for grants.

Is Orthophosphate the only thing that effects pH?

What are all the sources of Orthophosphate?

Any testing above the new Boise Creek channel?

# Years 1-5 Water Quality Data-

*Thoughts, questions, “ah ha”s, critical gaps, red flags?*

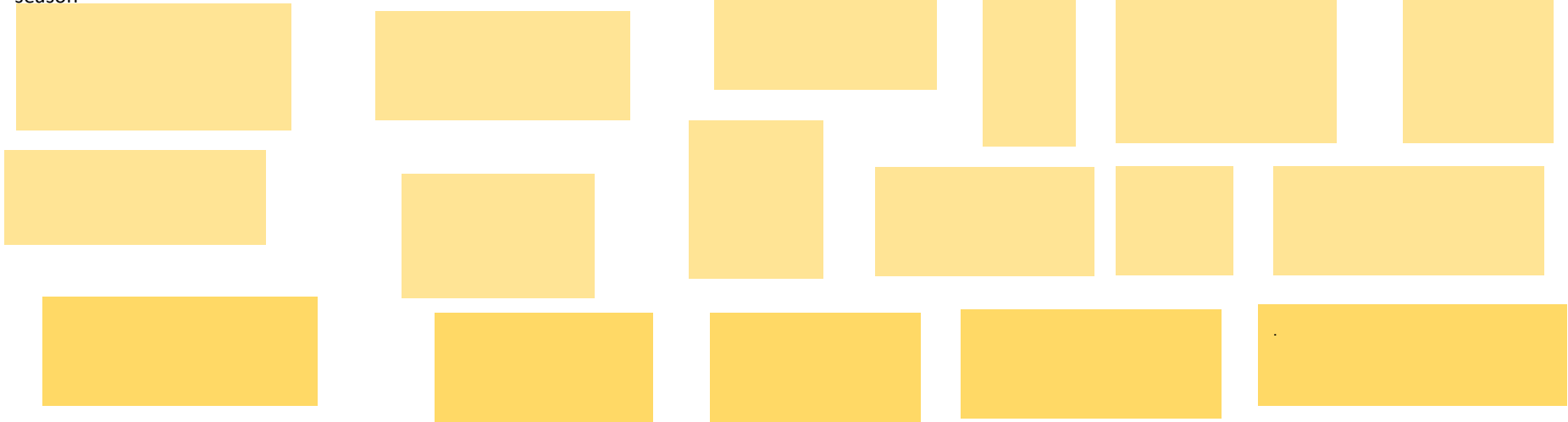
As implementers, consider what these data might mean for sources.

## Specific ?s from Julian

- 1) High hits in spring. When are manure applications happening, and where?
- 2) Drainage infrastructure in areas with high wet season pollution?
- 3) What’s up with Year 5 on Boise?

Notes: No smoking gun from Boisetrib at Warner Ave— it’s coming from city MS4, and they have found about all the illicit connections they think exist at this point.

Notes: Why would all 3 tribs be more elevated in 2024 (for e coli)? Precip, some sort of regional trend? –julian’s answer is that the data is skewing high right now bc the water year data is front loaded with wet season





A photograph of a rural landscape. In the foreground, several bare, dark tree branches with some moss are visible, framing the scene. The middle ground shows a green field with several cows grazing. A small stream or pond is visible in the lower part of the field. In the background, there are trees, a fence, and some buildings under a cloudy sky.

**BREAK**

**Please return at 3:17 pm**





Original priority implementation reaches, based on data from mid-2000s

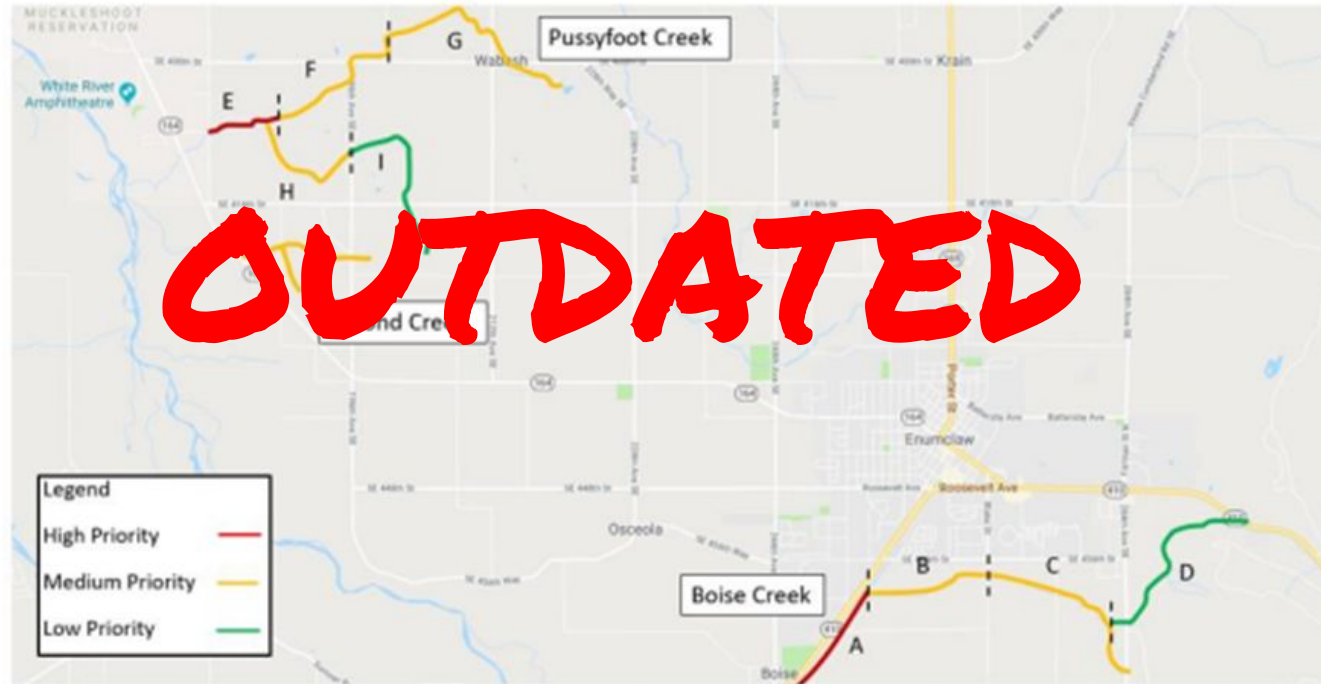
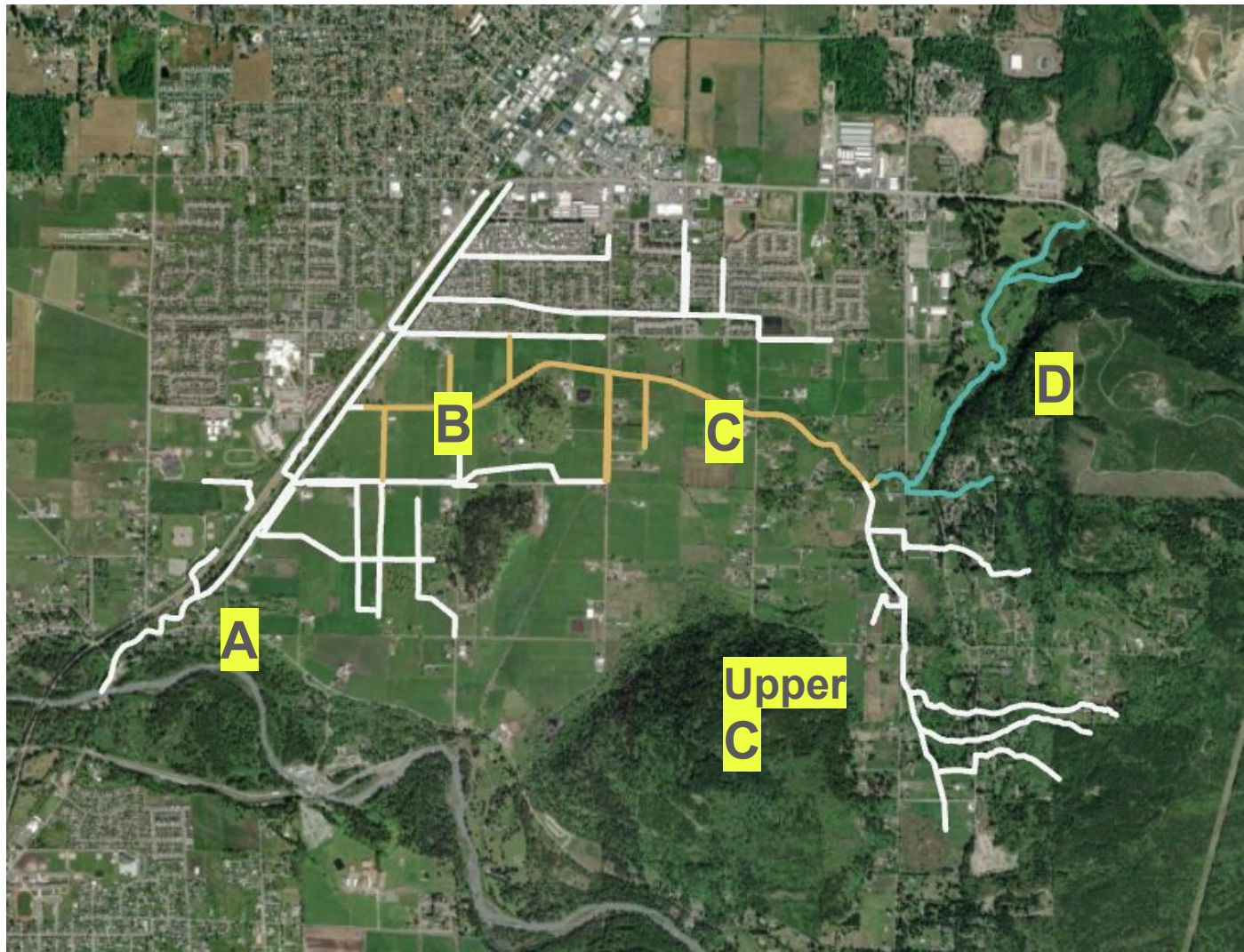


Figure 12. TMDL implementation priority reaches and lettering for scheduling purposes



Updated reach  
priority  
designations for  
Boise Ck. based  
on Ecology & KC  
SWS data



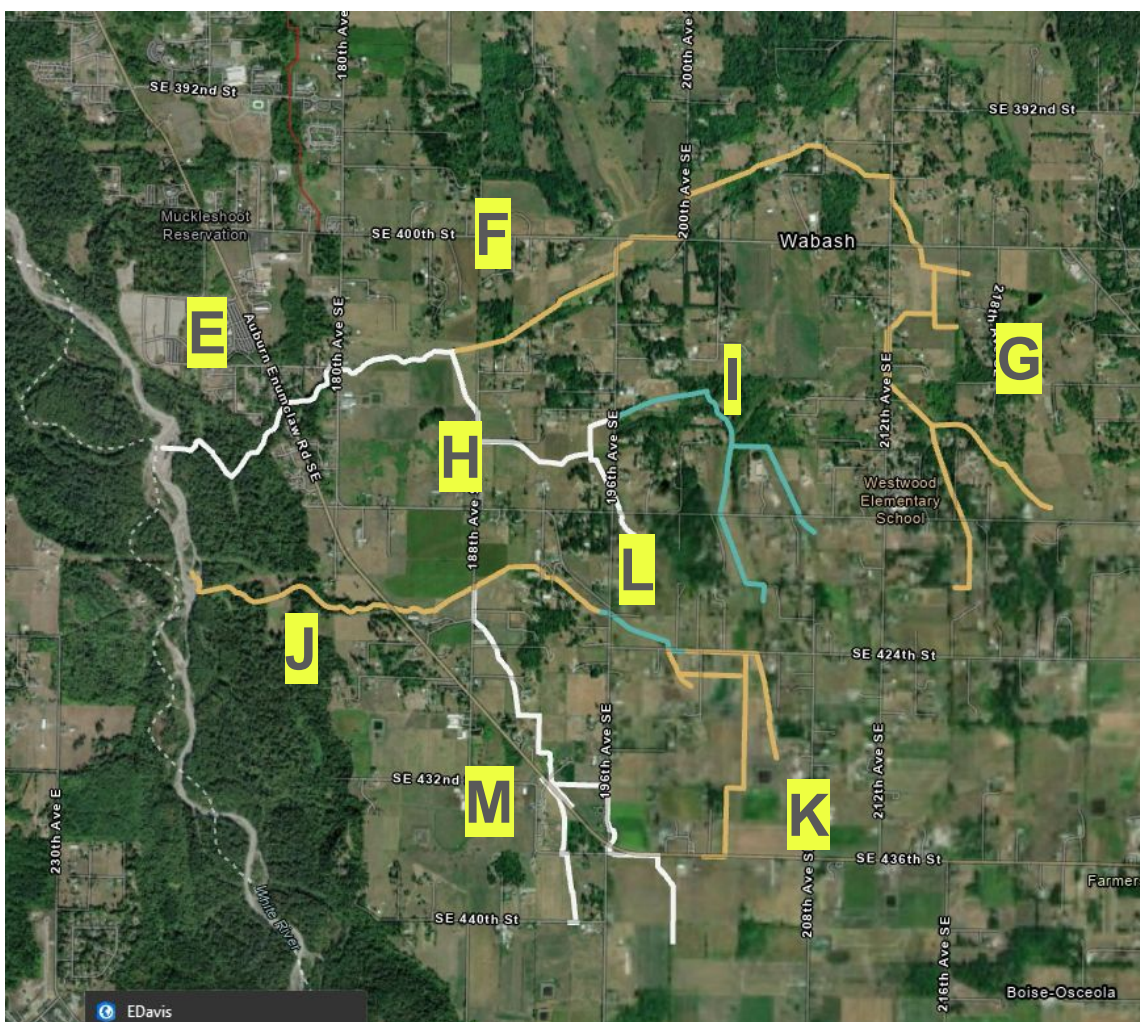
High priority  
reach



Medium  
priority reach



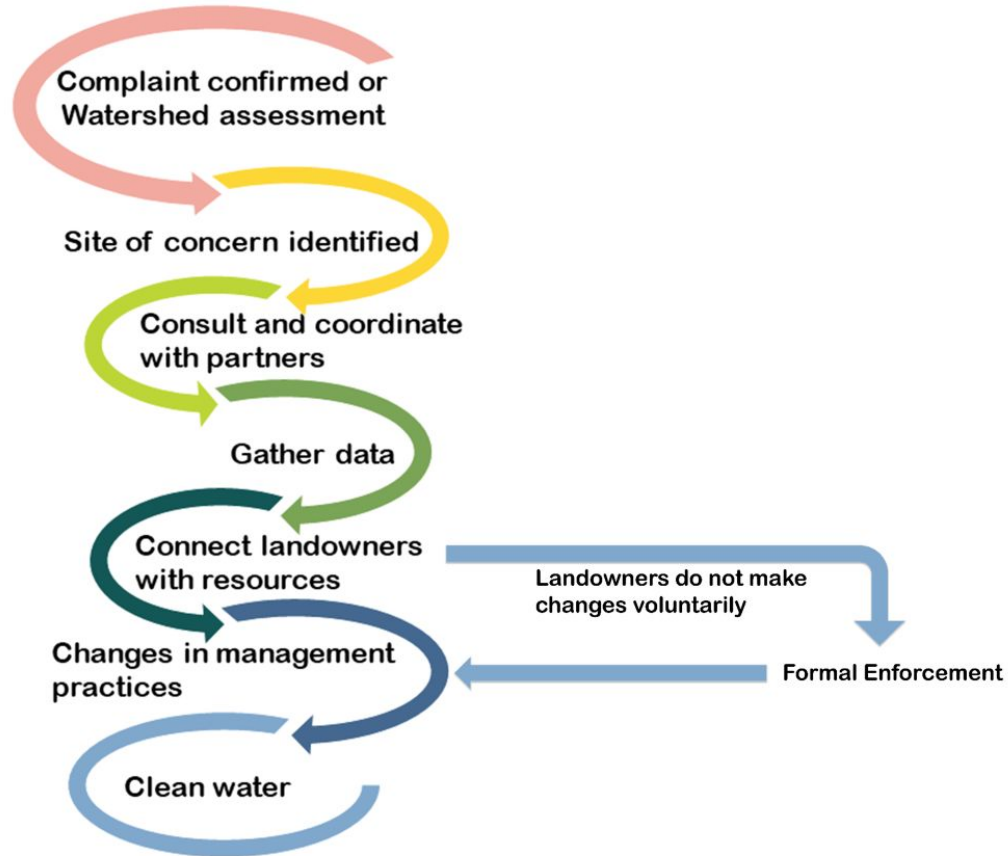
Low priority  
reach

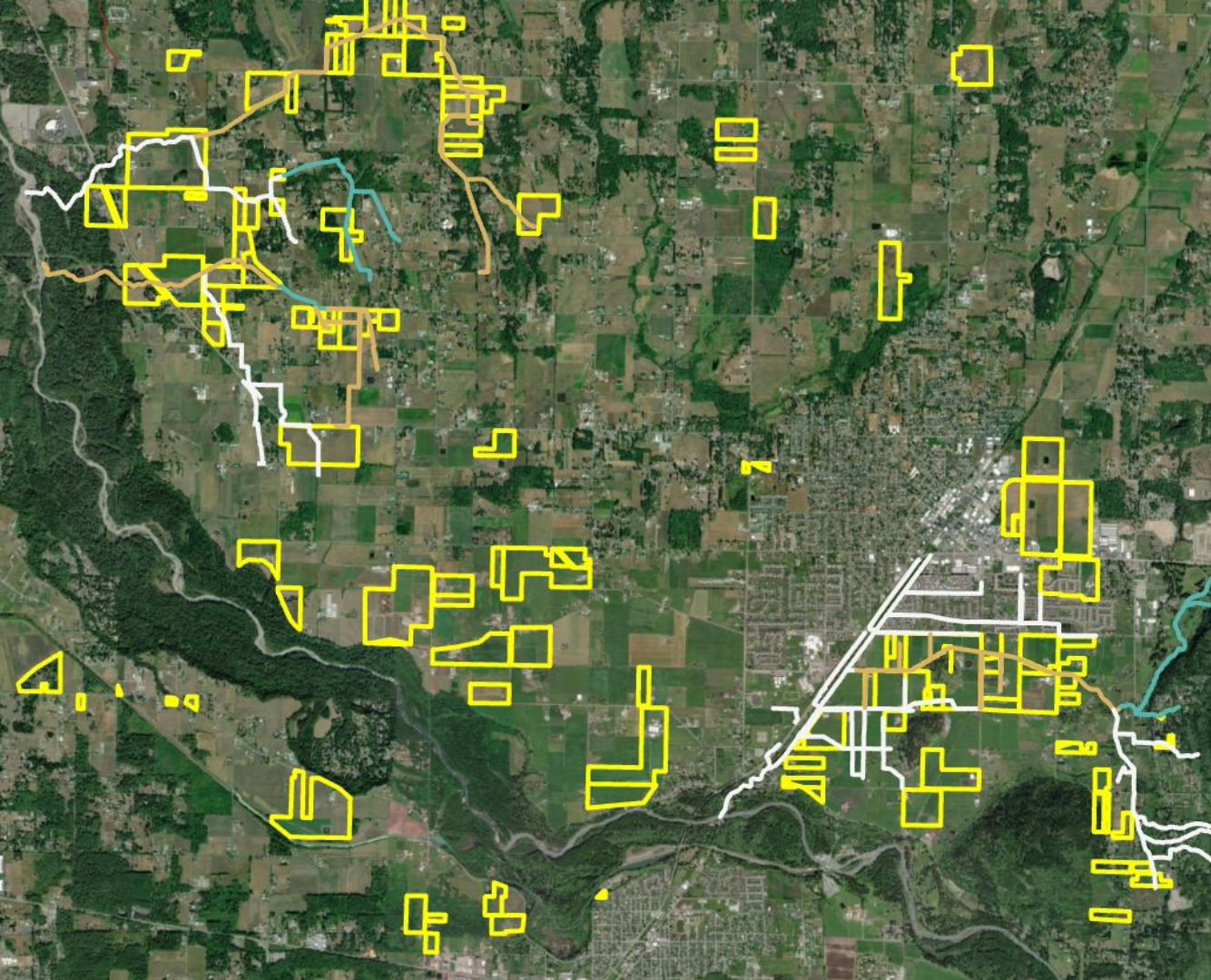




# How will these priority designations be used by Ecology?

## Nonpoint workflow

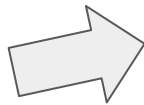




1. Assign reach names and priorities to existing ~100 Enumclaw-area sites in database



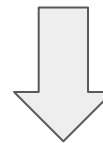




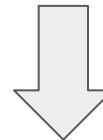
1. Assign reach names and priorities to existing ~100 Enumclaw-area sites in database



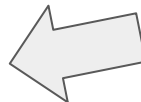
2. In order of priority....
  - a. Check sites of concern for status



- b. Discuss with KCD



- c. Contact landowners and refer to KCD if not already cooperators. Push for voluntary compliance!



- d. Compliance/enforcement process as necessary



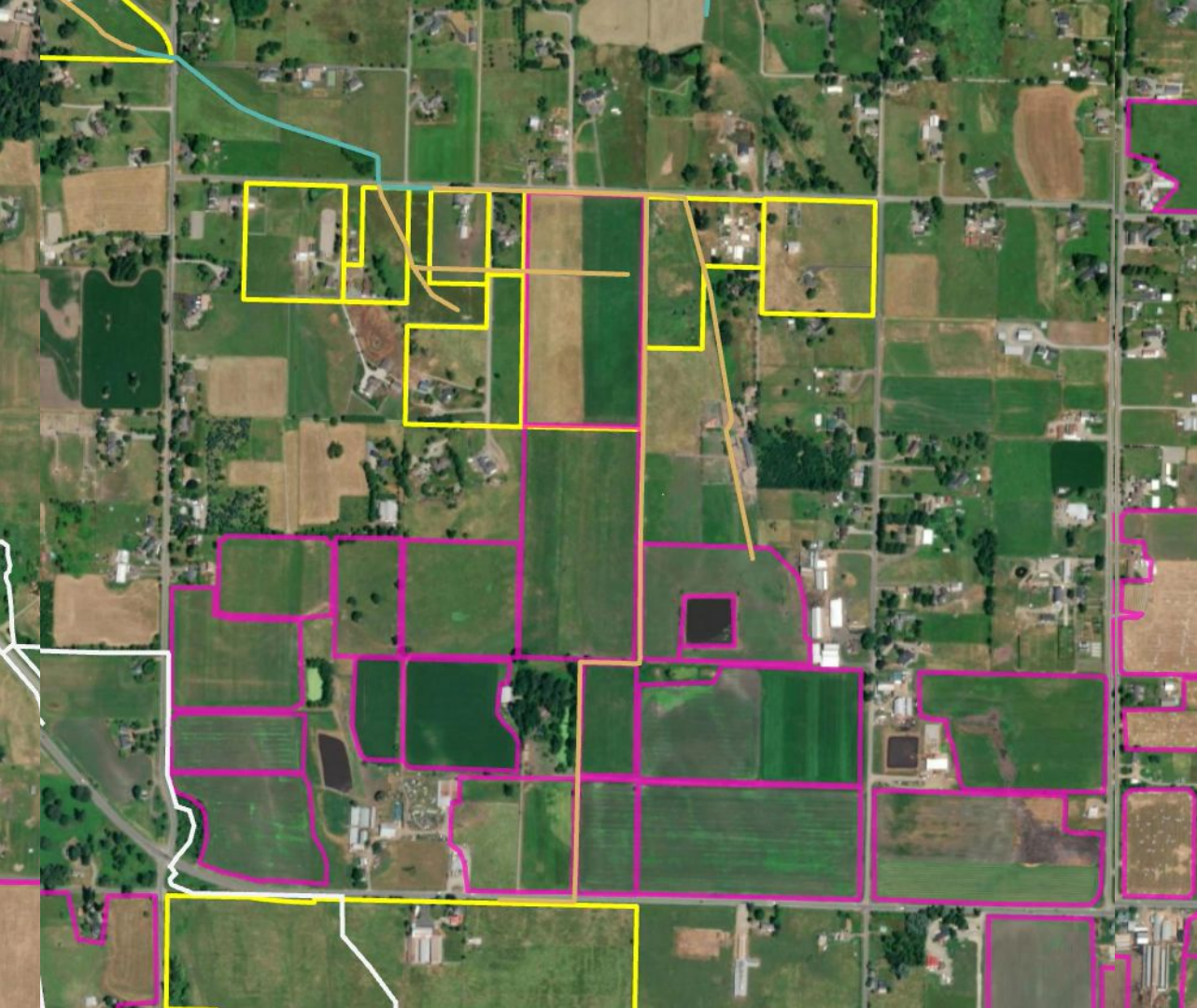
3. All newly discovered sites will get slotted into the priority list according to location and be dealt with accordingly



4. In 3 years, when Julian begins monitoring at a finer scale again, we can revise priorities if needed



***Circle of Life Adaptive Management***



How can other  
implementers use  
this prioritization  
scheme?



# Proposed Priority Implementation Reaches- thoughts, questions, ah ha's, critical gaps, red flags?

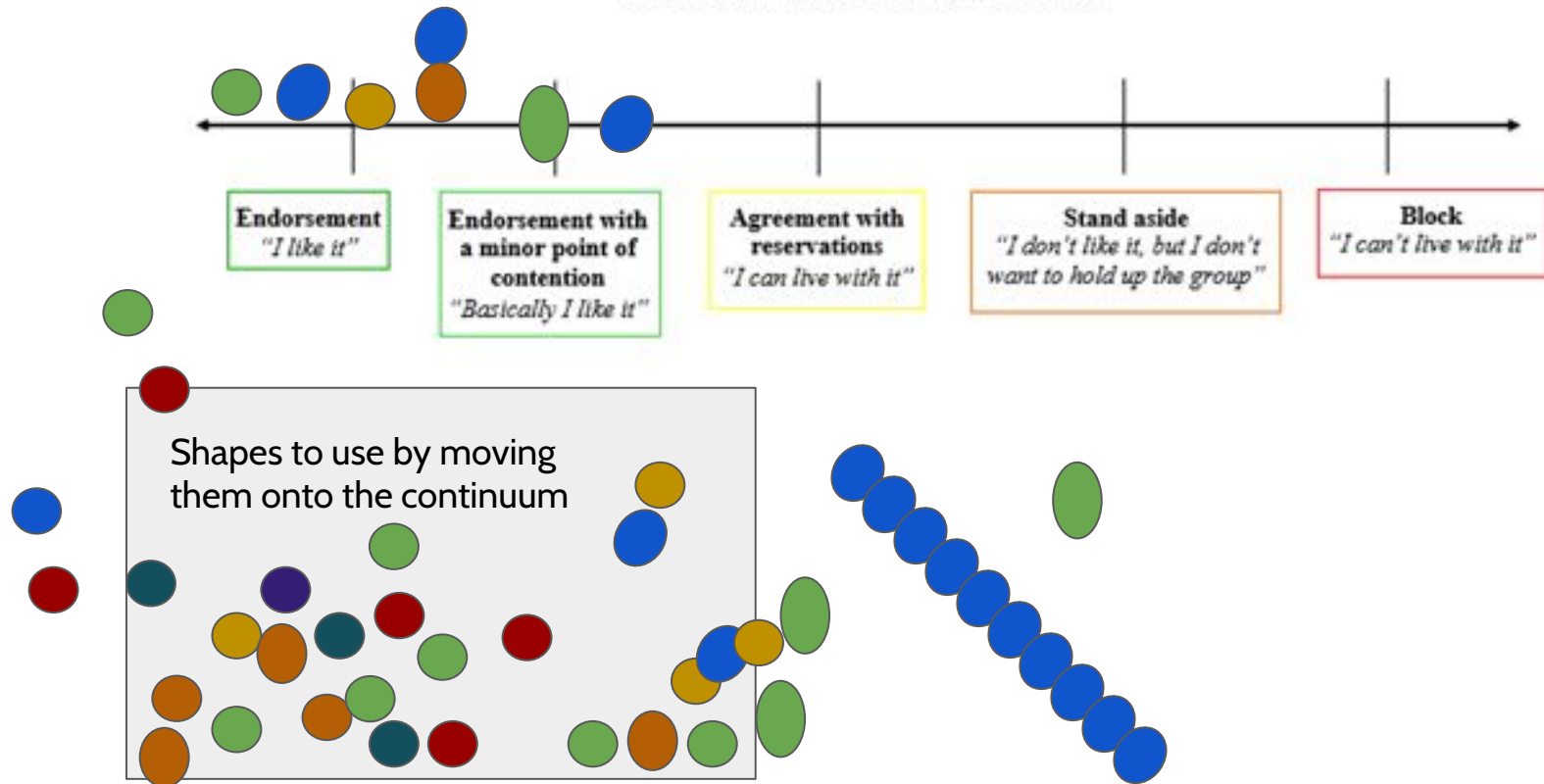
Funding, funding and more funding...inflation has made doing large projects nearly impossible.

Helps with justifying certain activities or providing higher levels of funding assistance.



## Proposed Priority Implementation Reaches

PLACE A SHAPE ON THE CONTINUUM TO SHOW YOUR LEVEL OF AGREEMENT





Jay's Riojas  
project with Rick

Your proudest Puyallup/Lower White River water quality  
related accomplishment in the last year;  
moment where collaboration succeeded;  
or give kudos to an individual in this group!

Thank you Julian for  
making the data  
summary so  
layperson friendly

**Kudos to  
Cameron for all  
his hard work in  
the county**

Kudos to KCD!

Kudos to  
everyone  
working with  
landowners

Thanks to Megan  
for fostering a  
relationship with the  
dairy's on the  
Plateau.

Thank you Emily for  
doing the tough job  
of identifying sites  
and working with  
landowners. .

Thanks for the great  
presentation Julian  
and for all your hard  
work collecting the  
data!

I was going to  
highlight one or  
two KCD folks, but  
can't. They're all  
doing work that I  
appreciate beyond  
words.

Welcome to  
Enumclaw Emily!

Thanks to KCD for  
putting up with me  
while I pretend to  
know about farming  
(and learn more about  
it)

I want to give kudos  
to Cameron who is  
extremely  
responsive and very  
helpful. He goes  
above and beyond!

Thank you to Rick  
for always being  
open to help with  
complicated  
projects that make  
a big impact.

Seattle Health for  
conducting IDDE septic  
dye testing

The Riojas manure  
management project  
cost-share was a nice  
bit of implementation.  
Thanks to Jay for  
helping with that!

Thank you to the  
WSDA folks for  
offering support  
to KCD