



White River tributaries sampling plan 2024-2025

King County Stormwater Services

10/21/2024

Two TMDLs – NPDES permit requirements

New permit in effect 8/1/2024

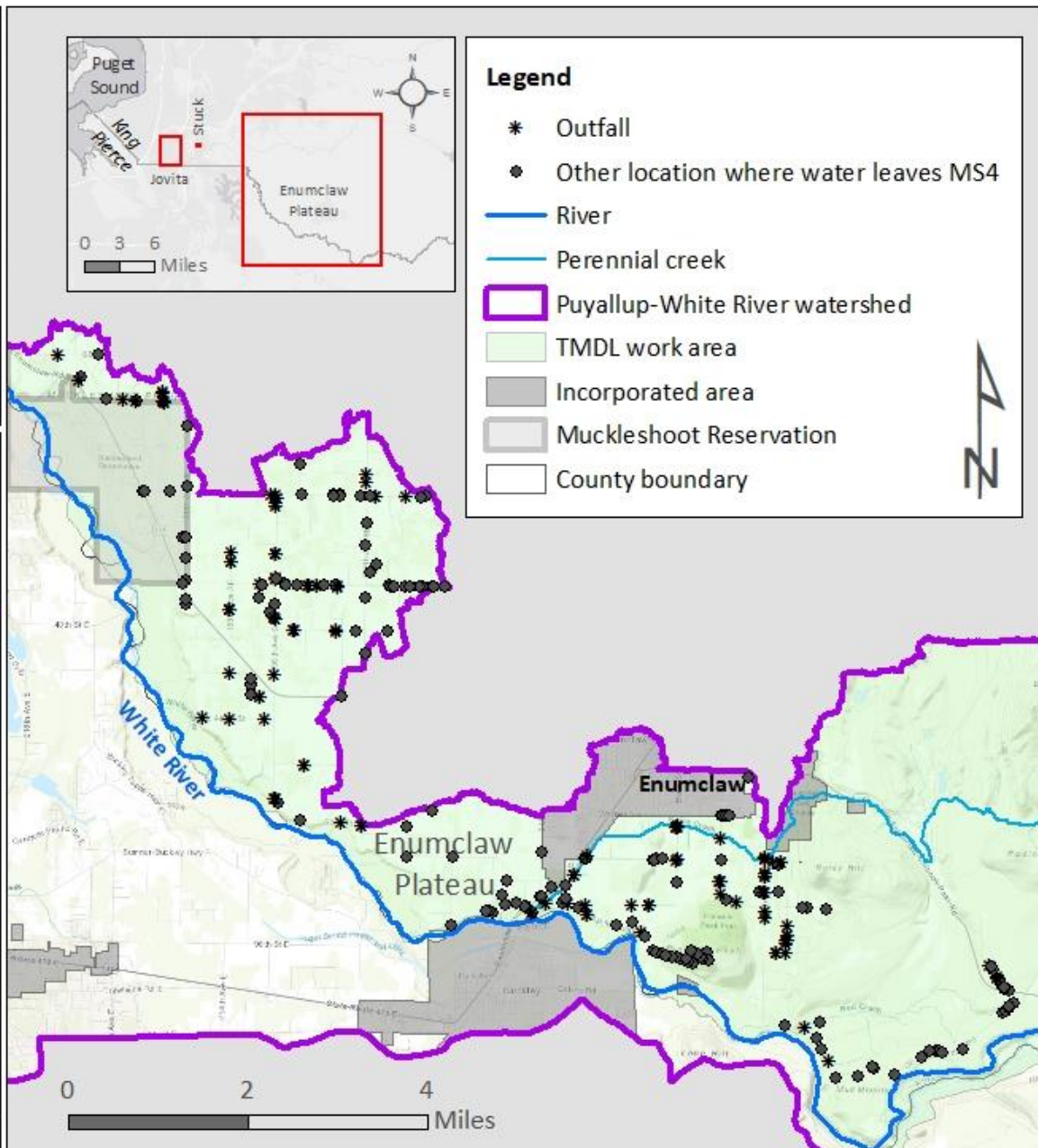
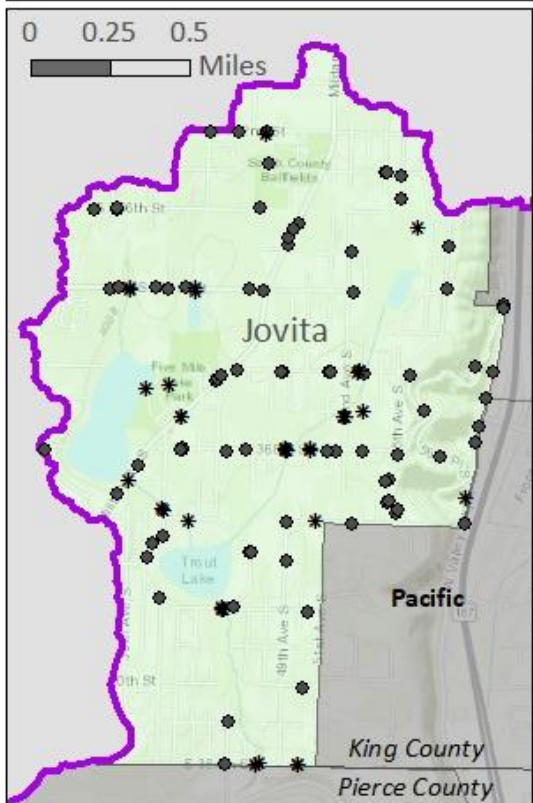
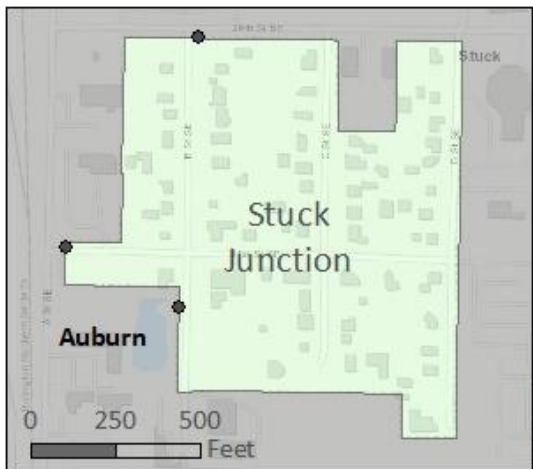
- Puyallup-White River Fecal Coliform TMDL
 - Sampling from stormwater system
 - *(stream sampling)*
 - Business inspections
 - Pet waste stations
- Lower White River pH TMDL
 - MS4 sampling (orthophosphate-P) – not until May 2025
 - Mapping
 - Development requirements

Puyallup-White Fecal Coliform TMDL

- Sampling from stormwater system
 - Requirements open to interpretation
 - Effort will be reduced from previous permit cycle

Puyallup-White Fecal Coliform TMDL

- Sampling from stormwater system
 - Dry season:
 - Visit/sample all outfalls etc. (>400) in White River watershed
 - Enumclaw plateau
 - Jovita Creek basin
 - Stuck Junction



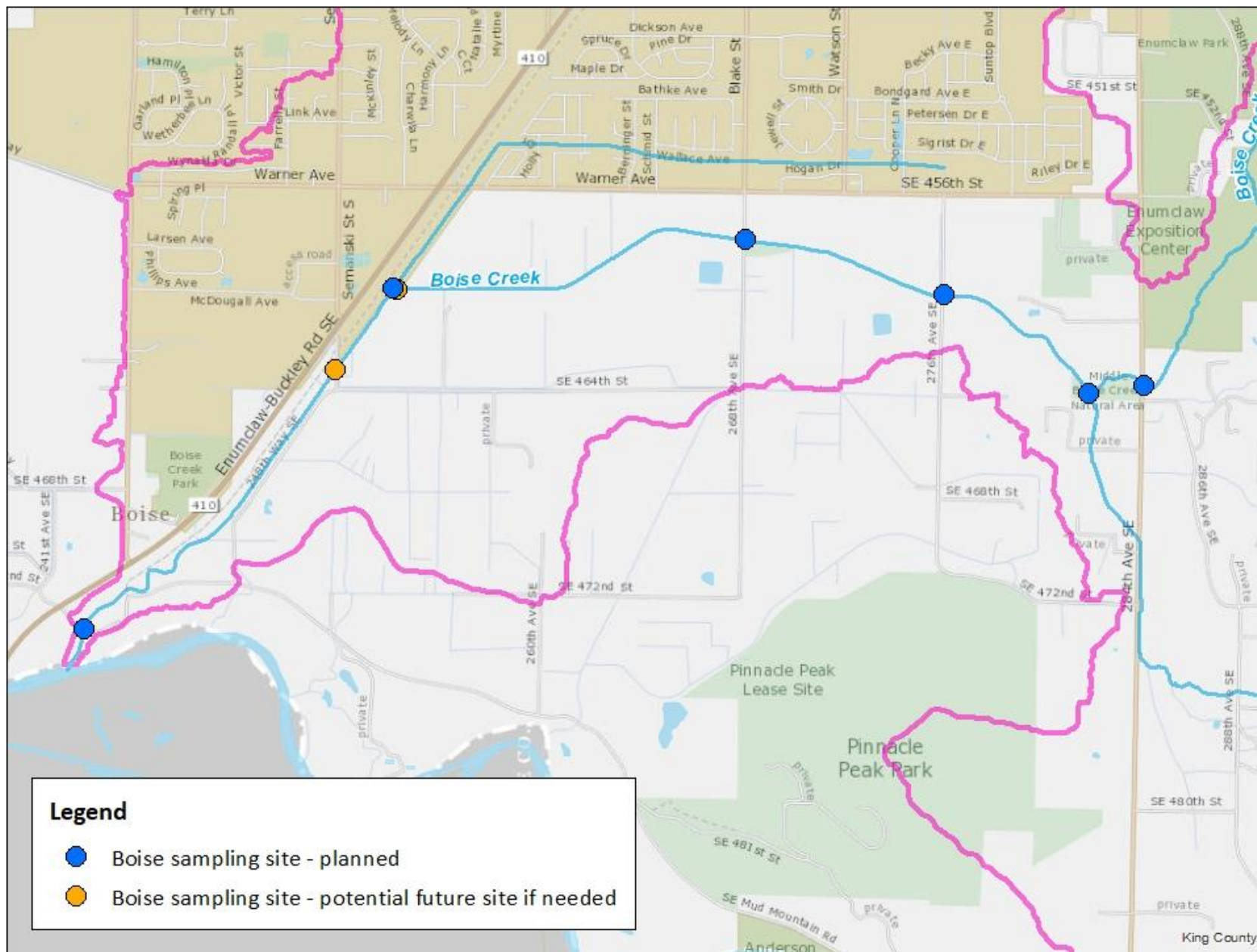
Puyallup-White Fecal Coliform TMDL

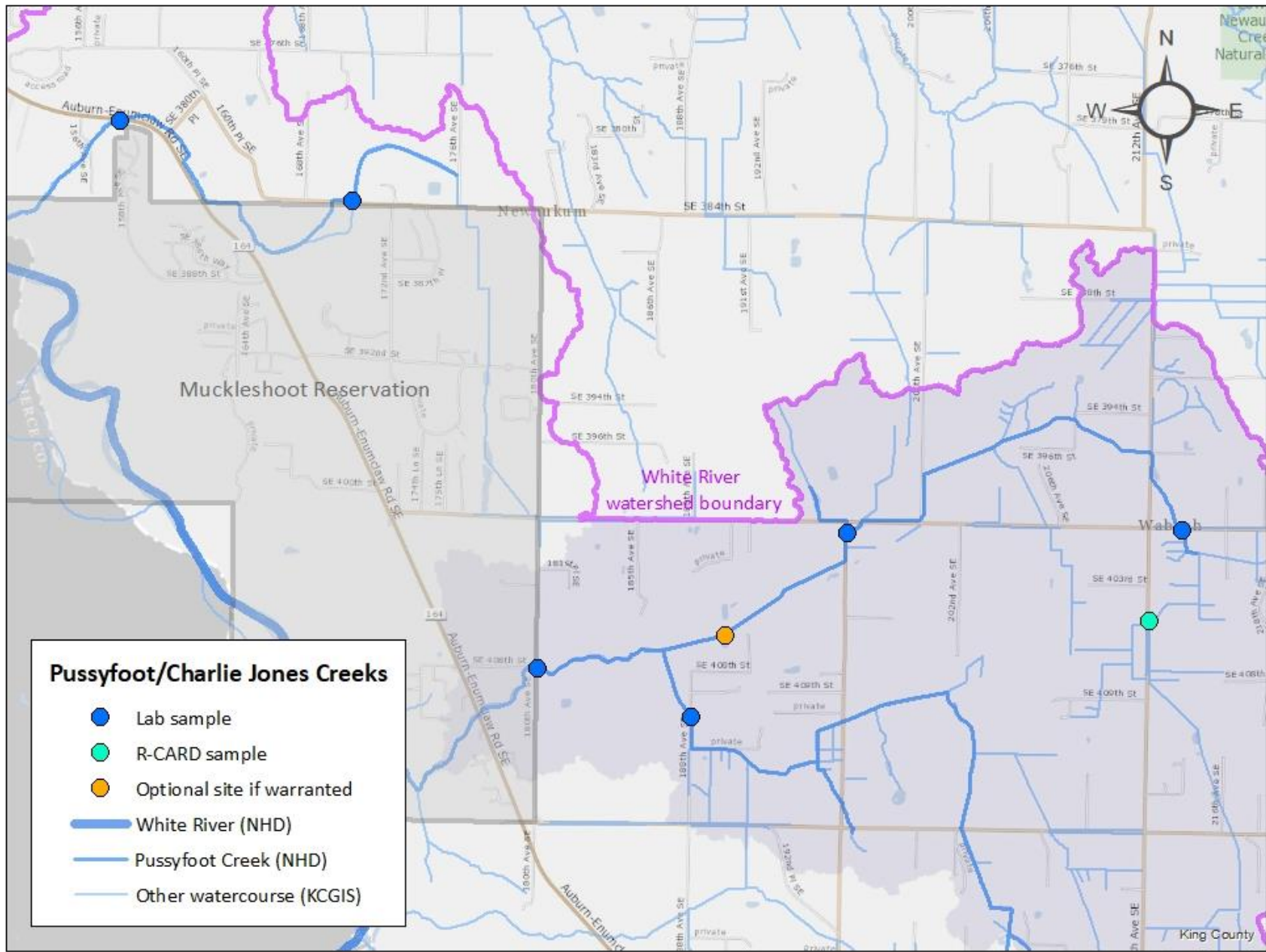
- Sampling from stormwater system
 - Dry season:
 - Visit/sample all outfalls etc. (>400) in White River watershed
 - Enumclaw plateau
 - Jovita Creek basin
 - Stuck Junction
 - Wet season
 - Visit/sample all outfalls on Enumclaw plateau during dry weather
 - January through March
 - Screen for manure discharges at specific locations of concern
 - Limited storm sampling

Puyallup-White Fecal Coliform TMDL

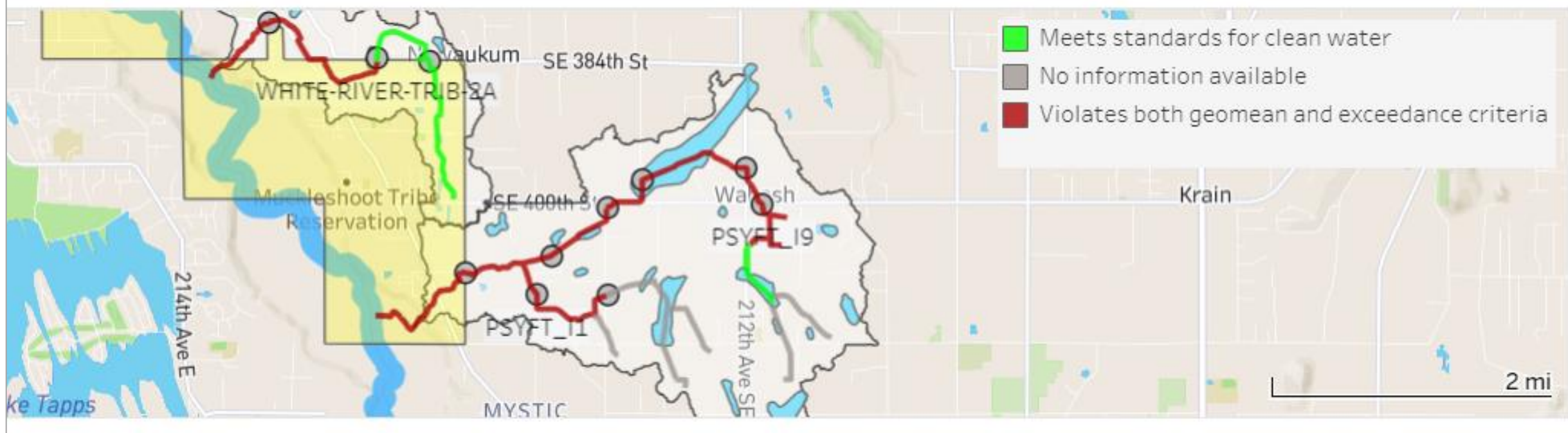
Stream sampling

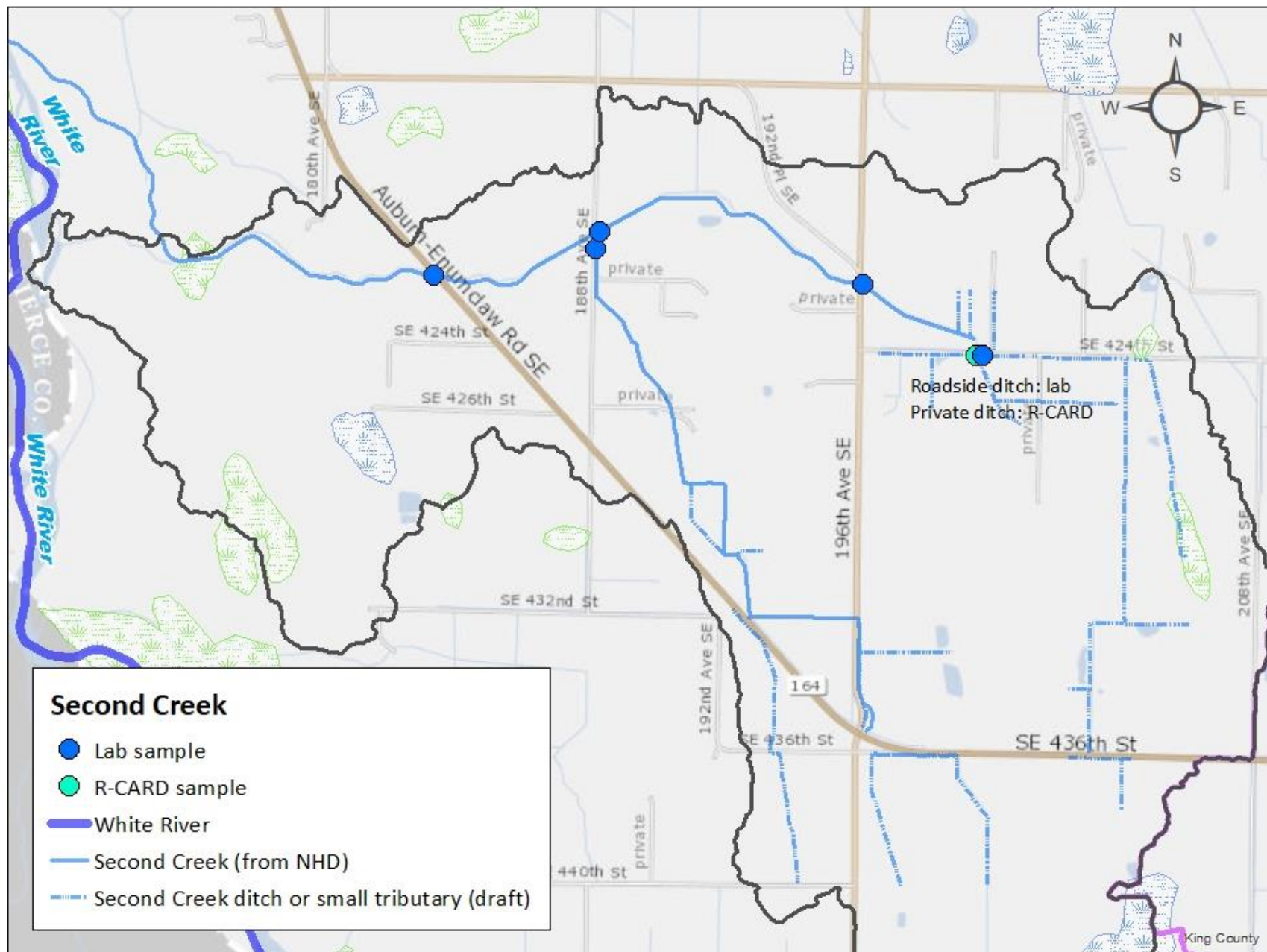
- Four streams
 - Boise Creek
 - Pussyfoot Creek
 - Second Creek
 - Charlie Jones Creek
- Monthly samples for *E. coli* beginning October 2024
- Quarterly qPCR analyses
 - October 2024; January, April, July 2025



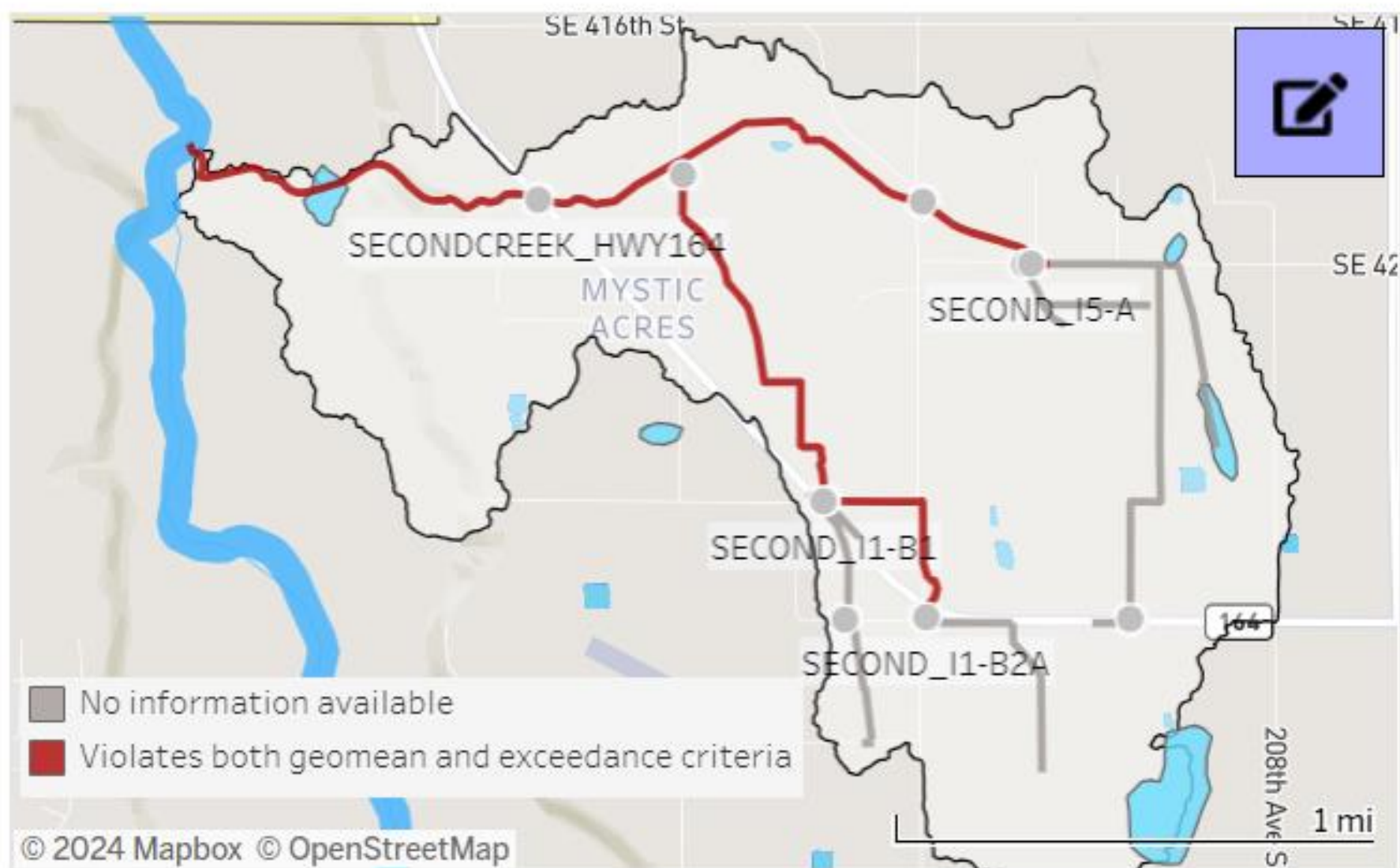


Compliance, based on water year 2024 data (*E. coli* bacteria)





Compliance, based on WY 2024 *E. coli* data



Water level/ temperature gages

- Pussyfoot Creek @ 188th Ave SE
- Second Creek @ Hwy 164
- Charlie Jones Creek @ Hwy 164
- Boise Creek
 - Temperature at various locations

