



# Upper Columbia United Tribes

**Columbia River Toxics Reduction Lead Entity  
(CRRLE) Project**

**Caroline Keever - Project Manager**

**Jerry White - Project Coordinator**

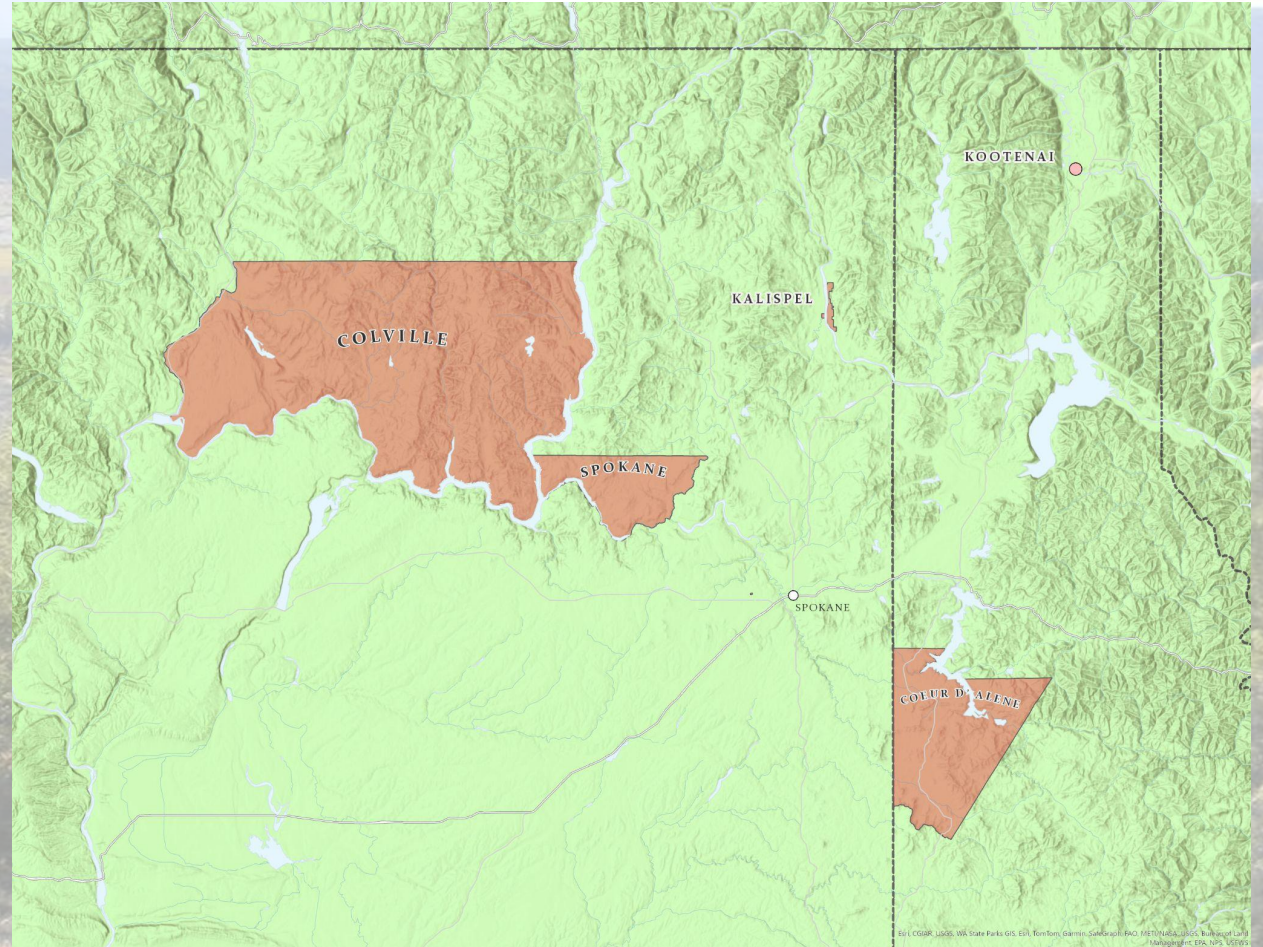


# Who Are Upper Columbia Plateau Tribes: Members of UCUT?

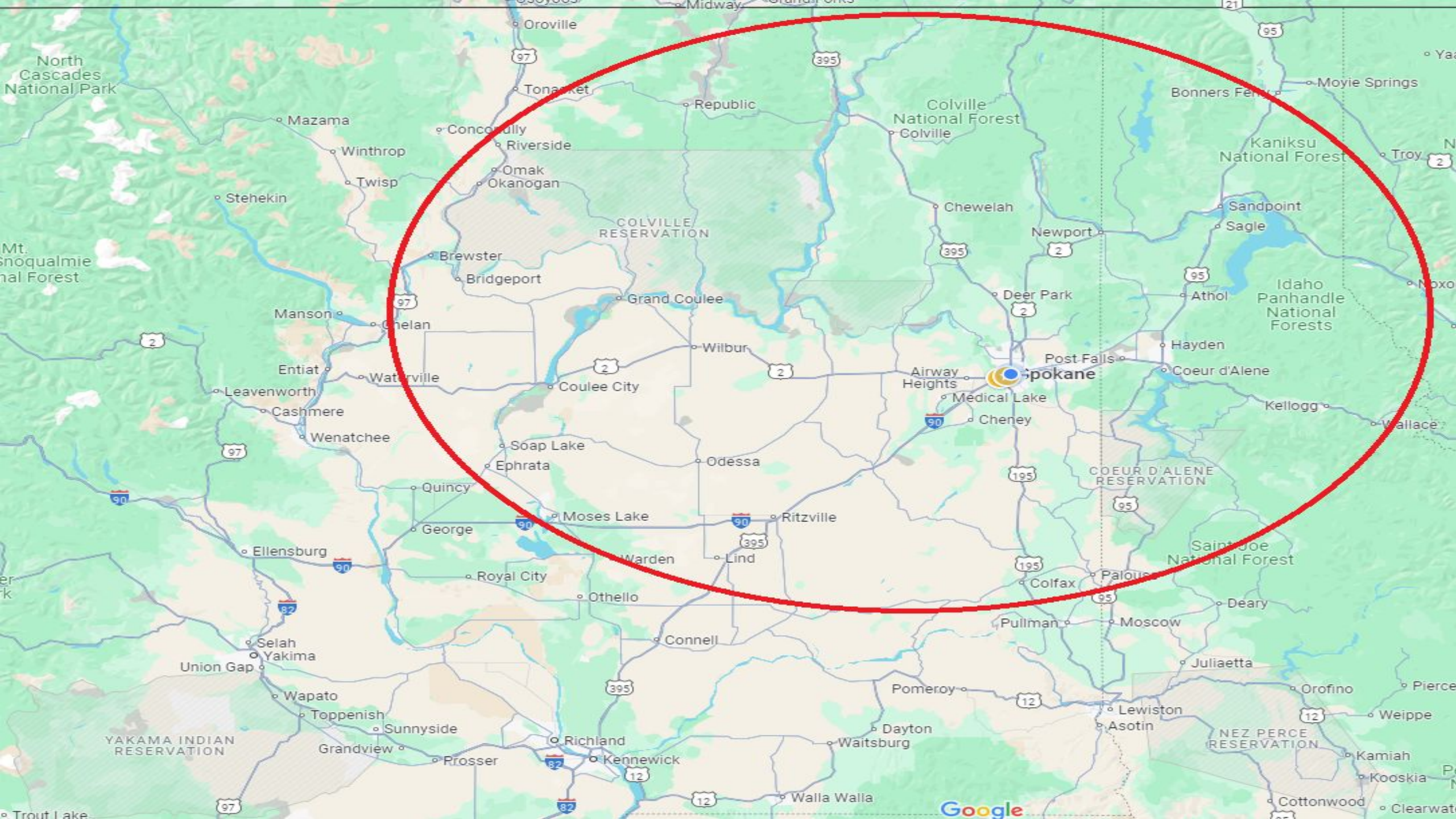


**The Upper Columbia United (member)  
Tribes of (UCUT) - Five Sovereigns:**

- **Confederated Tribes of the Colville Reservation (12)**
- **The Coeur d'Alene Tribe**
- **The Kalispel Tribe**
- **The Kootenai Tribe of Idaho**
- **The Spokane Tribe**









# Upper Columbia Plateau Tribes - River Connections - River Traditions





# Upper Columbia Plateau Tribes - River Connections Traditions

- Sovereign Tribes and diverse indigenous cultures in diverse landscapes of the upper Columbia Plateau.

## Common Connections:

- Intimate connections to the Columbia Basin Watershed rivers
- First Foods
- Anadromous and resident fish
- Plants, aquatic, and terrestrial animals
- Values-based leadership





# What is UCUT?



**The Upper Columbia United Tribes (UCUT) is a tribal consortium, comprised of the five Upper Columbia Plateau Tribes**



[About](#) ▾ [Member Tribes](#) ▾ [Projects](#) ▾ [Contact](#) ▾ [Salmon Reintroduction](#) ▾



## Five tribes, one vision for the future

### UNITED FOR THE BENEFIT OF ALL

The Upper Columbia United Tribes ensure a healthy future for the benefit of all by protecting and enhancing the traditional territorial lands of our ancestors. Through the collaboration of five area tribes, we take a proactive, collaborative, and science-based approach to promoting fish, water, wildlife, diverse habitat, and Indian culture in the Northwest.

Image: Columbia River

Credit: Confederated Tribes of the Colville Reservation



# Sovereign Tribes and Indigenous Cultures



- Toxic pollution destroys intimate connections, healthy lifeways, and traditional-use relationships
- Erodes sovereignty
- Put Tribal communities and Landscape relationships at risk by creating barriers to access, and ecological recovery
- Further, toxic pollution puts all communities at risk

## Fish Advisory

### Upper Columbia River/Lake Roosevelt

Fish are nutritious, but certain fish in the Upper Columbia River contain chemicals (mercury and PCBs) that can harm your health. **Babies and children are most at-risk. Women who are or might become pregnant, nursing mothers, and children should follow all of this advisory.** Everyone else should follow the largescale sucker advice, and also limit the amount they eat of other fish to no more than 3 times the amount recommended.

**Upper Columbia River Fish Advisory Location**

If you fish the Spokane River arm contact DOH for up-to-date information

To reduce your risk, consider all the places you get fish from such as rivers, lakes, and grocery stores.

Example: If you eat 2 kokanee meals, it's safe to eat 1 serving of canned light tuna; no other fish should be eaten that week.

**Preparing Fish the Healthy Way**

Fish are part of a healthy diet. You can make it even healthier if you follow these tips. Some chemicals build up in the fat of fish and can be reduced if you prepare and cook fish correctly. Mercury cannot be reduced because it builds up in fish muscle (the fillet).

- Before cooking fish remove the skin, fat, and internal organs.
- Eat younger and smaller fish (within legal limits).

**Serving Size**

Adult: 160 lb. = 8 oz. uncooked fish  
Child: 80 lb. = 4 oz. uncooked fish

**Contact Information**

Department of Health  
Toll Free: 1-877-485-7316  
www.doh.wa.gov/fish

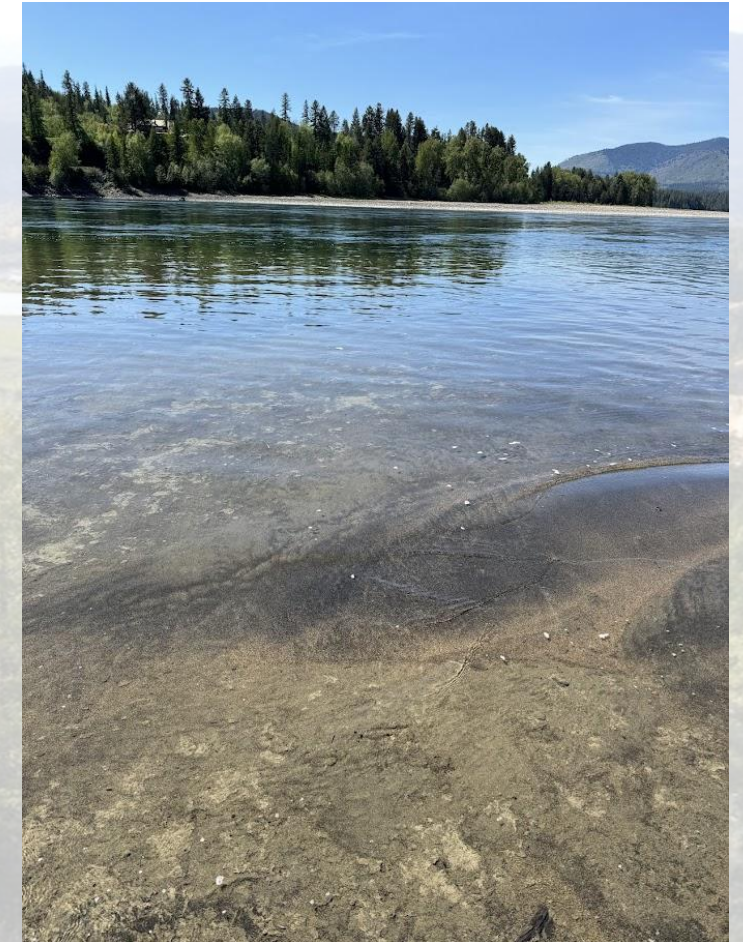
DOH 334-305 May 2013. Fish illustrations © Joseph R. Tomelleri. Available in other formats for people with disabilities. 1-800-525-0127 (TDD/TTY call 711).

| HEALTHY CHOICE                           |  | Meals per Week   |
|--|--|--|
| Kokanee                                  |  | 3 meals per week   |
| Lake Whitefish                           |  | 2 meals per week   |
| Rainbow Trout                            |  | 2 meals per week   |
| Canned (Light) Tuna added for comparison |  | For more healthy store-bought choices: www.doh.wa.gov/fish |

| Limit              | OR | Meals per Month  |
|--------------------|----|--|
| Burbot             |    | Eat only 4 meals per month of any combination of these 5 fish. |
| Longnose Sucker    |    |  |
| Mountain Whitefish |    |  |
| Smallmouth Bass    |    |  |
| Walleye            |    |  |

| Caution           | OR | Meals per Month  |
|-------------------|----|--|
| Largescale Sucker |    | Women of childbearing age and children: 2 meals per month<br>Everybody else: 1 meal per week |
| Largemouth Bass   |    | 2 meals per month  |

| DO NOT EAT           |  | DO NOT EAT |
|----------------------|--|------------|
| Northern Pike/minnow |  |            |





# Columbia River Toxics Reduction Lead Entity (CRTRLE) Project



CRTRLE is a coordinated UCUT effort engaging the five-member Plateau Tribes to reduce toxic pollution from entering the waterways and ecosystems of the Upper Columbia Basin Watershed. The effort endeavors to protect tribal sovereignty by recovering the ability for tribal communities to connect to traditional foods, recreation, fisheries, plants and animals of the aboriginally occupied landscapes.

The CRTRLE is working for the benefit of tribal residents and *all residents* and communities living in the upper Columbia River Watershed.

***Each Tribe has done extensive science and toxics reduction work individually - UCUT will endeavor to coordinate and build on further efforts.***



# The Columbia River Toxics Reduction Lead Entity (CRTRLE) Project

**The What:**

**EPA Grant to UCUT:**

**\$5,597,772 - Total funding package**

- Developing, implementing, and managing a multi-phase, large-scale program which leverages partnerships and includes a comprehensive toxics reduction strategic plan.
- Leading program and policy development and providing technical assistance.
- Awarding and managing subawards.
- Participating in the Columbia River Basin Restoration Program Working Group



# The Columbia River Toxics Reduction Lead Entity (CRTRLE) Project

*The project is comprised of the following components, activities, and “flow”:*

The Columbia River Toxics reduction Lead Entity is composed of five major project and focus areas or “project bins”.

In each of the five project “project bins” there are multiple subawards available for each of the five member tribes of UCUT and other entities.

Tribal PProjects:

## Tribal (only) Subawards:

- **Toxics Reduction Strategic Plan (\$960,000 - 8 subawards, \$120,000 each - Subject to change)** This is a long-term project that seeks to provide a framework for integrating all parties into a cohesive plan that creates an overall framework to organize efforts in preventing and removing persistent, bioaccumulative toxics (PBTs) and Chemicals of Concern (CoC) from Columbia Basin waterways.
- **Regional inventory of historic mines (\$270,000 - 6 subawards, \$45,000 each)** The inventory will be a synthesis of information on historic mine locations, tailing storage areas, and legacy mining contamination pathways, along with the identification of priority sites for remediation.

## Competitive (Tribal and NGO) Subawards

- **Education and Outreach (\$525,000 - 7 subawards, \$75,000 each)** Community education is a direct way of educating people in preventing people and wildlife from being poisoned, and preventing toxics from entering the ecosystems and waterways.
- **Agricultural buffers and Best Management Practices (BMPs) (\$1,200,000 - 12 subawards, \$100,00 each)** This project would endeavor to encourage the recovery of stream-side, riparian habitats to prevent toxic pollution from running off the surrounding landscape and entering our waterways.
- **Lead Trade-Out (\$259,000 - 7 subawards, \$37,000 each)** This program would endeavor to prevent new lead (in the form of fishing gear) from entering and polluting waterways.



# The Columbia River Toxics Reduction Lead Entity (CRTRLE) Project



## Subaward “project bins” available for NGOs.

**Request For Proposals (RFP): Window September 2-September 30:**  
**NGOs will be given preference for a letter of support from a UCUT Member Tribe.**

- **Lead Trade-Out (\$259,000 - 7 subawards, \$37,000 each)** This program would endeavor to prevent new lead (in the form of fishing gear) from entering and polluting waterways.
- **Education and Outreach (\$525,000 - 7 subawards, \$75,000 each)** Community education is a direct way of educating people in preventing people and wildlife from being poisoned, and preventing toxics from entering the ecosystems and waterways.
- **Agricultural buffers and Best Management Practices (BMPs) (\$1,200,000 - 12 subawards, \$100,00 each)** This project would endeavor to encourage the recovery of stream-side, riparian habitats to prevent toxic pollution from running off the surrounding landscape and entering our waterways.



# The Columbia River Toxics Reduction Lead Entity (CRTRLE) Project



## Lead Fishing Gear Buy-Back and Replacement Program (\$259,000 - 7 subawards, \$37,000 each)

### Deliverable #1:

- Sub-awardees will *create outreach efforts* to reach local watershed communities with key messages.
  - Develop at least two top-tier or key messages (on lead fishing tackle impacts)
  - Develop materials and or electronic media content relevant to local communities and watersheds that build awareness around project goals, to include:
    - Examples:
      - Describe lead impacts on raptors such as golden eagles, bald eagles, and ospreys
      - Describe Lead impacts on tundra swans, diving and dabbling ducks
      - Describe the problem: amounts of lead distributed into rivers and the need to develop lead free alternatives
      - Promote lead free tackle options and businesses

### Deliverable #2

- Sub awardee will *create a lead fishing tackle buy-back, exchange and/or lead free fishing tackle give-away program*. These will include the following benchmarks:
  - Purchase lead free fishing gear and create opportunities to exchange, give away lead-free fishing gear at stations, in the field, or at events
  - Attendance at least three events or gatherings to promote buy-backs/OR giveaways, or exchanges - track recipients of outreach messaging
  - (Option) Include tribal fisheries programs in lead free trade out program for fisheries program lead gear
- Examples:
  - Conduct boat-ramp tabling and/or lead gear exchanges at boat ramps, and/or fishing events, and/or invasive weed check-station distribution of outreach materials and/or lead-free fishing gear
  - During fishing seasons, run a circuit of active boat launches or bank fishing sites to conduct lead gear exchanges or lead free gear giveaways
  - Distribute information on lead-free tackle options in mailings, partner with orgs/agencies that are already distributing materials to anglers.
  - Build a web page and/or social media presence around key messages

### Deliverable #3:

- Sub-awardee will *collect lead fishing gear for disposal - measured by the piece and/or by the pound*
  - Subawardee collects public, lead fishing tackle - measures/counts lead pieces and documents removal
  - (option) Creates (Tribal Fisheries Program) lead-free trade out program for fisheries program lead gear - collects tribal program lead
  - Sub awardee could collect lead associated with monofilament or build and maintain monofilament and lead recycle stations
  - Recycling and disposal options are explored and shared
- 

### Deliverable #4

- Subawardee will report progress and summative results to UCUT
  - Writing up brief semi-annual reports on subaward project progress, milestones, and outcomes and submitting to UCUT
  - Provide some documentation - photos, etc
  - Writing up a final report on project at the conclusion of the project and submitting this to UCUT



# The Columbia River Toxics Reduction Lead Entity (CRTRLE) Project



## Education and Outreach for Toxic Pollution Reduction (\$525,000 - 7 subawards, \$75,000 each)

### Deliverable #1:

#### ***Develop a comprehensive Outreach and Education Plan :***

- Sub-awardees will meet the following Benchmarks:
  - Identify the project area
  - Identify the Purpose for outreach plan:
    - Protecting human health - toxic exposure prevention:
    - Protecting waterways and dependant ecosystems:
    - Educating and empowering regional/community leadership so as to help those leaders make informed pollution prevention/remediation decision-making that contributes to a reduction in toxic pollution.
    - Identifying basic themes and creating a public literacy on toxic pollution - CoCs and the current trends for that pollution:
  - Identify **Target Audiences** for outreach and education:
  - Identify specific **key messages** for the project area:
  - Identifies specific communication, **outreach tools** for reaching target audiences:
  - The plan should be developed in cooperation with the subaward working on the Strategic planning subaward project bin. In developing the education and outreach plan, close consultation should be undertaken with the Toxic Reduction Strategic Plan so as to collaborate on the development of the audiences, key messages and outreach tools.

### Deliverable #2

#### ***Conduct Outreach on Toxic pollution (CoC)s in Upper Columbia Basin Waterways.***

Conduct Education/Outreach in at least five places in highly impacted communities. Examples could be:

- Conduct Outreach/education via electronic means - Social media and/or website traffic
- Conduct an earned media campaign

### Deliverable #3

- Participate/collaborate in a forum/workshop/conference that allows for information sharing between subawardees.

### Deliverable #4

- Participate/collaborate with the Toxics Reduction Strategic Planning Subaward in developing and promoting a graphic display (map and links) of toxic pollution issues that are geographically displayed so that it is effective for outreach purposes.
- 

### Deliverable #5 - reporting/documenting



# The Columbia River Toxics Reduction Lead Entity (CRTRLE) Project



## Agricultural buffers and Best Management Practices (BMPs) (\$1,200,000 - 12 subawards, \$100,00 each):

### Deliverable #1:

Determine an area of emphasis

### (Optional) Deliverable #2

- Build a list of desired agricultural Best Management Practices (BMPs) for a project area that are sanctioned by tribal governments, federal or state governments and designed to be protective of Water Quality Standards.
- Provide the proper documentation that the desired Agricultural BMP has value and a proven track record of reducing non point source pollution, and/or associated toxic pollution in situations analogous to the project location.
- Provide a simple justification for pairing or combining agricultural BMPs in a project area to reduce toxic pollution:
  - For example: modification of tillage to reduce the STIR value and installation of a riparian buffer in a project area are a combination that could provide benefits..

### (optional) Deliverable #3

- The purchase of land and/or the agreement to purchase land from a landowner or bridge buyer in order to reduce toxic pollution. This may also be bundled with the ancillary benefits of improving stream function, fish habitat, and wildlife habitats.

### (Optional) Deliverable #4

- Installation of desired Best Management Practice to reduce toxic nonpoint source pollution from lands to waterways.
  - Example: Livestock exclusion fences coupled with amenities to replace the values of (in stream) watering or thermal cover.

### (Optional) Deliverable #5

- Create a situation wherein a defined piece of land that is in/or connected to a riparian zone, and is connected to an agricultural production area (or system) is enrolled into a conservation easement that is designed for the long term protection of the riparian (buffer BMP) values and function of that area.

### Deliverable #6

- Design a basic sample regime that undertakes the understanding of the baseline conditions and supports a final summative assessment of health and viability within the project area. This will be determined and negotiated with individual subawardee.
  - An example might be the sampling for pesticide or herbicide residues in or near the project area waterways. This might be to the end of setting up baseline status or looking at BMP effectiveness.

### Deliverable #7

- Writing up brief semi-annual reports on subaward project progress, milestones, and outcomes and submitting to UCUT
- Provide some documentation - photos, etc
- Writing up a final report on project at the conclusion of the project and submitting this to UCUT



## Key Information:

- Contact: Lori Rothrock, Office Manager
- Phone: 509.838-1057
- Email: lori@ucut-nsn.org
- Opening date: **SEPTEMBER 2, 2024**
- Closing date: **SEPTEMBER 30, 2024 (5:00pm PST)**



## UCUT is requesting proposals. Please Submit a proposal that includes:

- The Entity's legal name, address, and telephone number;
- The principal(s) including experience and qualifications;
- The experience and qualifications of the staff to be assigned to the project;
- Brief description of firm's prior experience, including any similar projects;
- For each subaward: A paragraph that provides a very *general description of the way you might propose to meet the deliverables*;
- Describe the timelines that you intend to use (Example Lead fishing gear exchange - 2026-2028) Define what you hope the ends of the performance periods (working period) to be;
- Describe the benchmarks you intend to hit to determine progress and gauge success;
- Provide a rough budget for engaging in the project;
- Provide an idea as to *which subawards* you would be supported by, or you are in a formal collaboration with UCUT Member Tribes to achieve deliverables;
- A brief description of the benefits to the community engaged, including whether the project benefits or engages the Plateau Tribal communities or underserved communities;
- Provide three references.
- If an NGO or non-Tribal entity submits a proposal, at least one letter of UCUT member Tribal support (from UCUT Tribal Staff or leadership) needs to accompany the proposal to be given preference.
  - Provide an idea as to *which subawards* you would be supported by, or you are in a formal collaboration with UCUT Member Tribes to achieve deliverables;
- Rolling RFP opens annually between 2024-2026 (July-August)
- No Matching Requirements
- Work *Performance* deliverable window - September 2, 2029 (all deliverables completed)





# Upper Columbia United Tribes

## **Columbia River Toxics Reduction Lead Entity (CRRLE) Project**

**Caroline Keever - Project Manager**

**Email: [caroline@ucut-nsn.org](mailto:caroline@ucut-nsn.org)**

**Phone: (509) 564-5475**

**Jerry White, Jr. - Project Coordinator**

**Email: [jerry@ucut-nsn.org](mailto:jerry@ucut-nsn.org)**

**Phone: (509) 475-1228**