

Flooding January 2022

Southwest Region

Roger Millar
Secretary of Transportation

Bart Gernhart
Assistant Regional Administrator - Maintenance
Chehalis Basin Board - Feb. 3, 2022

I-5 Chehalis

Exit 72 Rush Road Interchange



I-5 Chehalis

SR 6 / Main St Interchange

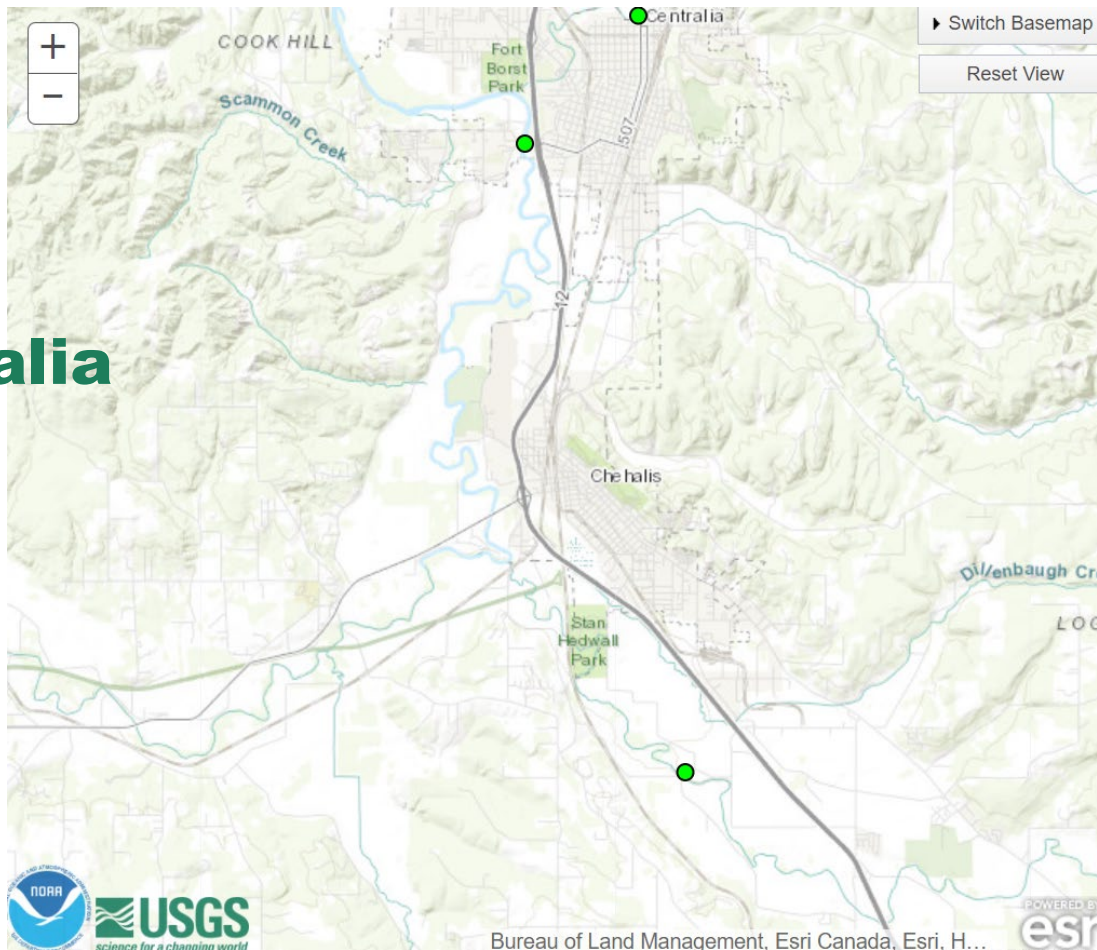


I-5 Chehalis

13th St Interchange



Gages & Hydrographs along I-5 Chehalis & Centralia



Challenging Forecast

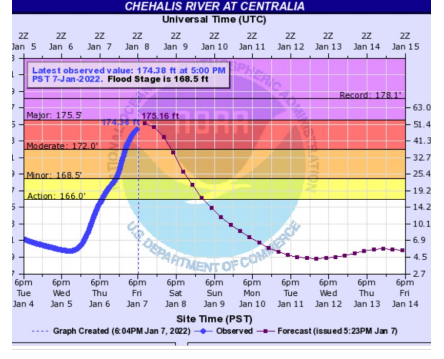
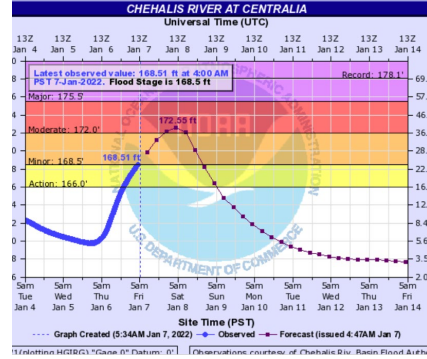
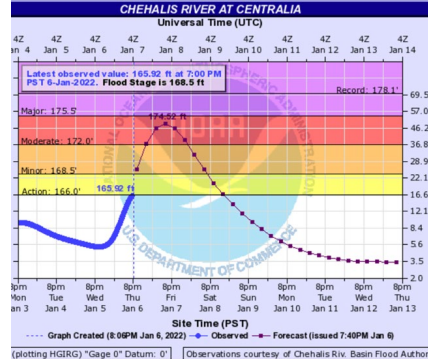
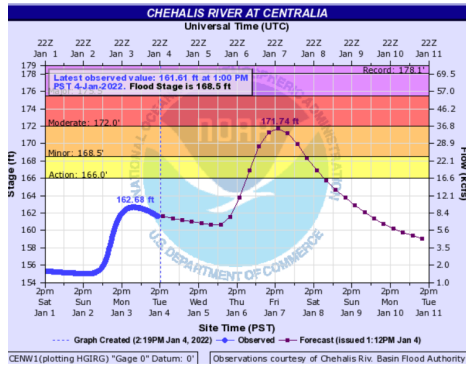
I-5 Centralia Predictions

Tues p.m.
Crest 171.7

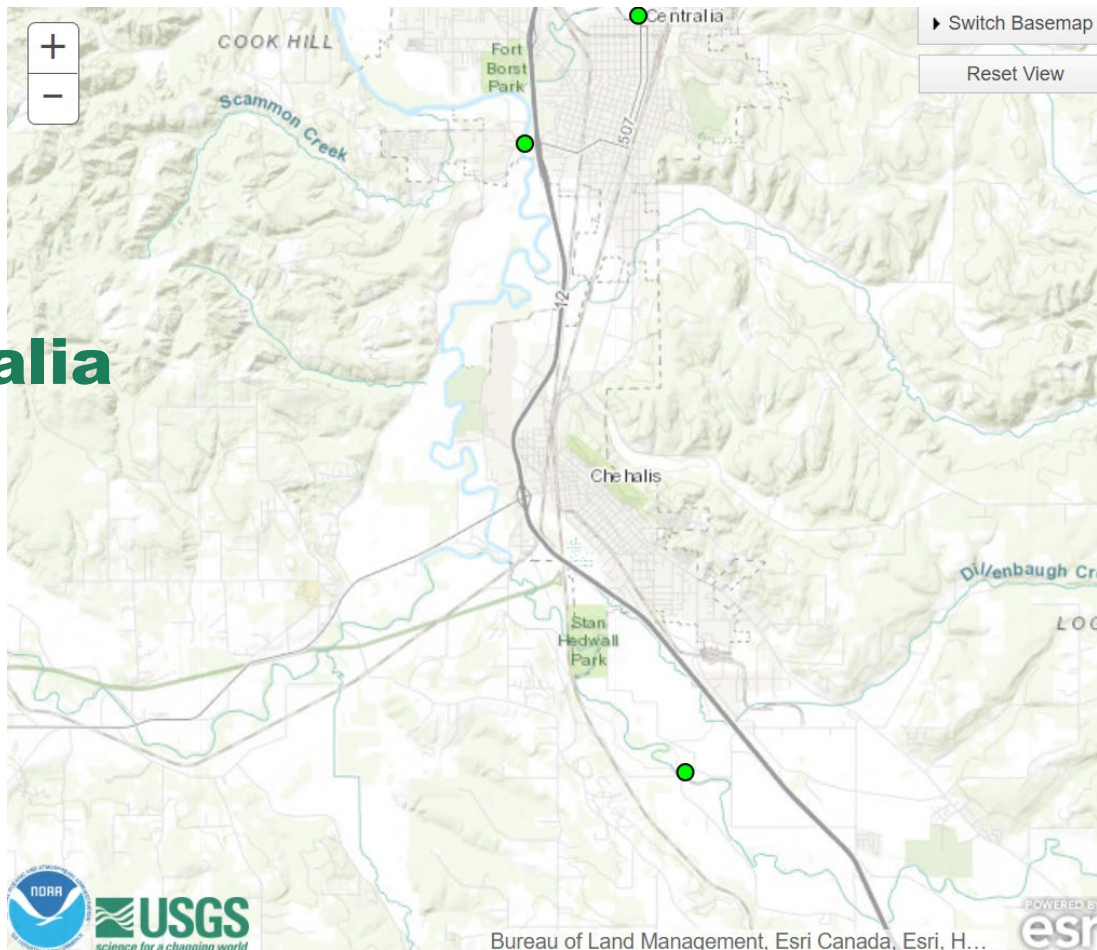
Thurs p.m.
Crest 174.5

Friday a.m.
Crest 172.5

Friday p.m.
Crest 175.1

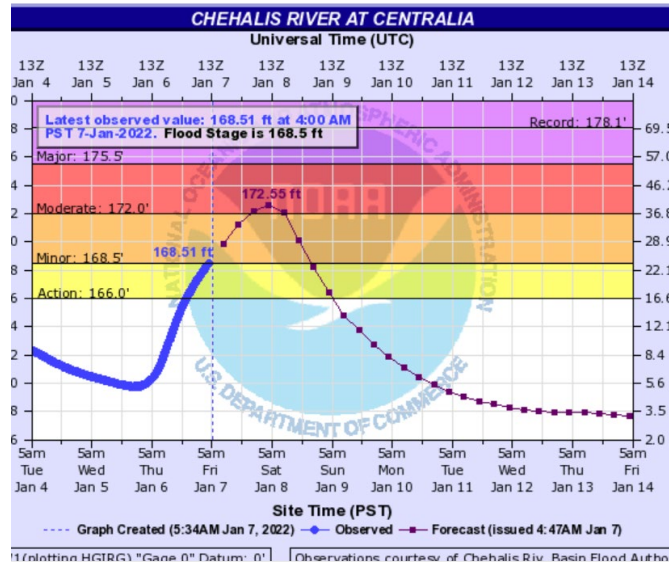


Gages & Hydrographs along I-5 Chehalis & Centralia



Challenging Forecast

I-5 Centralia Gage Predictions



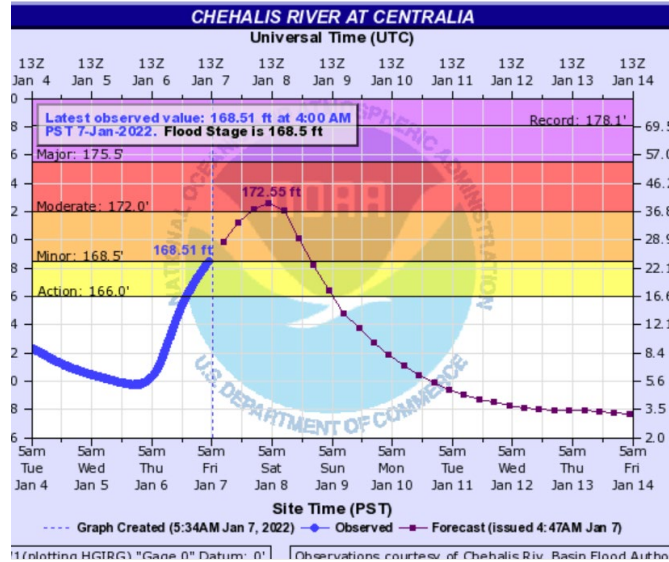
Friday 5:30 a.m. 168.5 level
with crest 172.5 Saturday a.m.



WSDOT's Chehalis Airport Tale-tell

Challenging Forecast

I-5 Centralia Gage Predictions

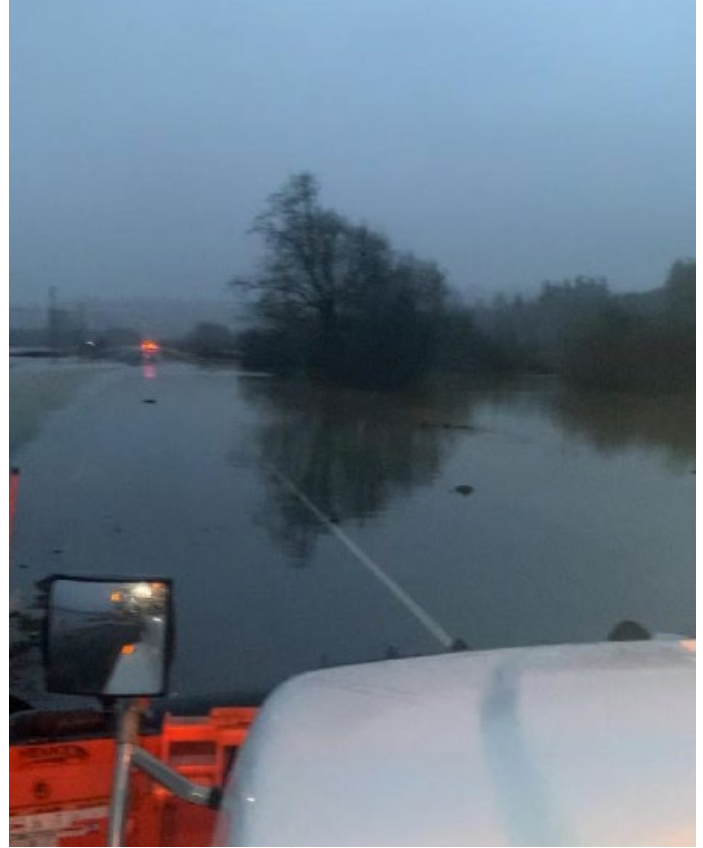


Friday a.m. 168.5 level
with crest 172.5 Saturday a.m.

I-5 Pavement On Skookumchuck Bridge



SR 6



SR 507 Skookumchuck River

North Centralia

SR 507

Near Bucoda



US 12 Milepost 40



SR 508 Tilton River

Near Morton



SR 4 Flooding & Debris



US 101 Slide



SR 105 Slides



Questions?