

LEAD ARSENATE MODEL REMEDY IMPLEMENTATION STEERING COMMITTEE

April 14, 2022



Agenda

- Introductions
- Project background
- Process and timeline
- Permitting process discussion



The background of the slide is a lush green landscape. In the foreground, there are apple trees with many ripe red apples hanging from the branches. The trees are set against a backdrop of a calm lake and rolling green hills under a clear sky. The entire image has a semi-transparent green overlay to make the white text stand out.

PROJECT BACKGROUND

Project Purpose

**MODEL PERMITTING PROCESS AND
CODE DEVELOPMENT**

CLEAN SOIL BANK FEASIBILITY STUDY

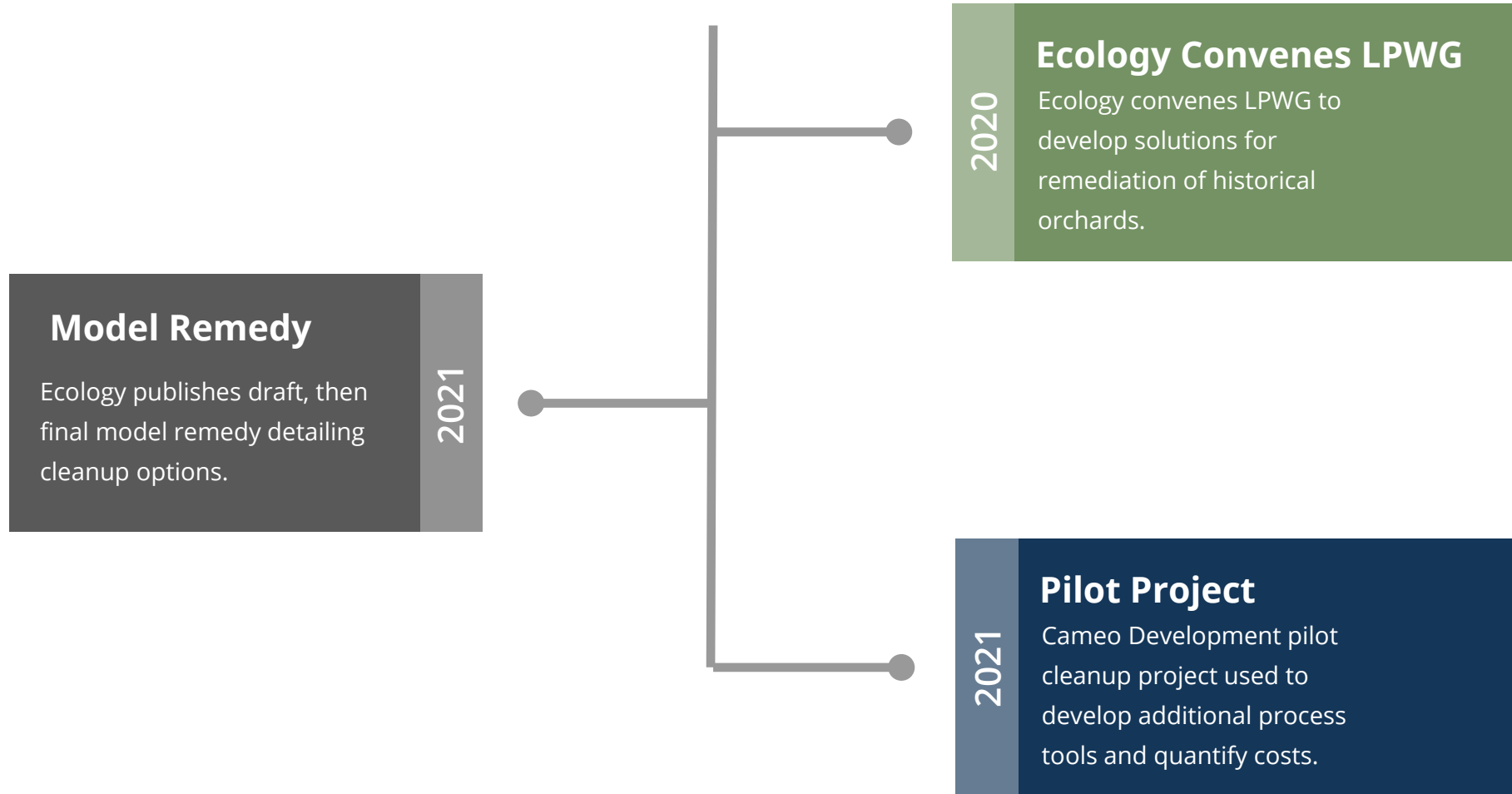




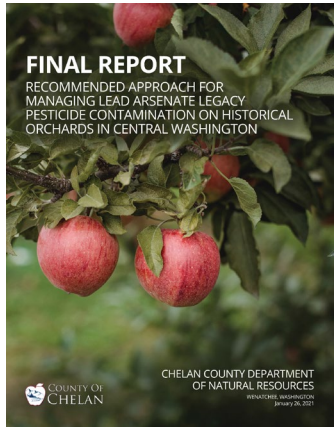
Background

- Historical Application of Lead Arsenate Pesticides in Central Washington between late 1800s and 1940s
- Nearly 115,000 acres of land potential contaminated by lead and arsenic

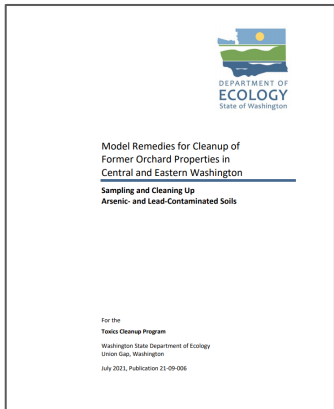
PAST EFFORT TIMELINE



Resources



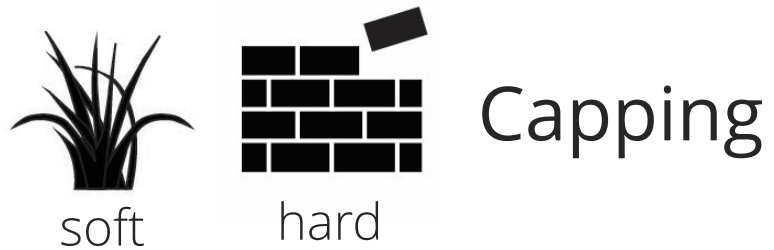
Legacy Pesticide Working Group



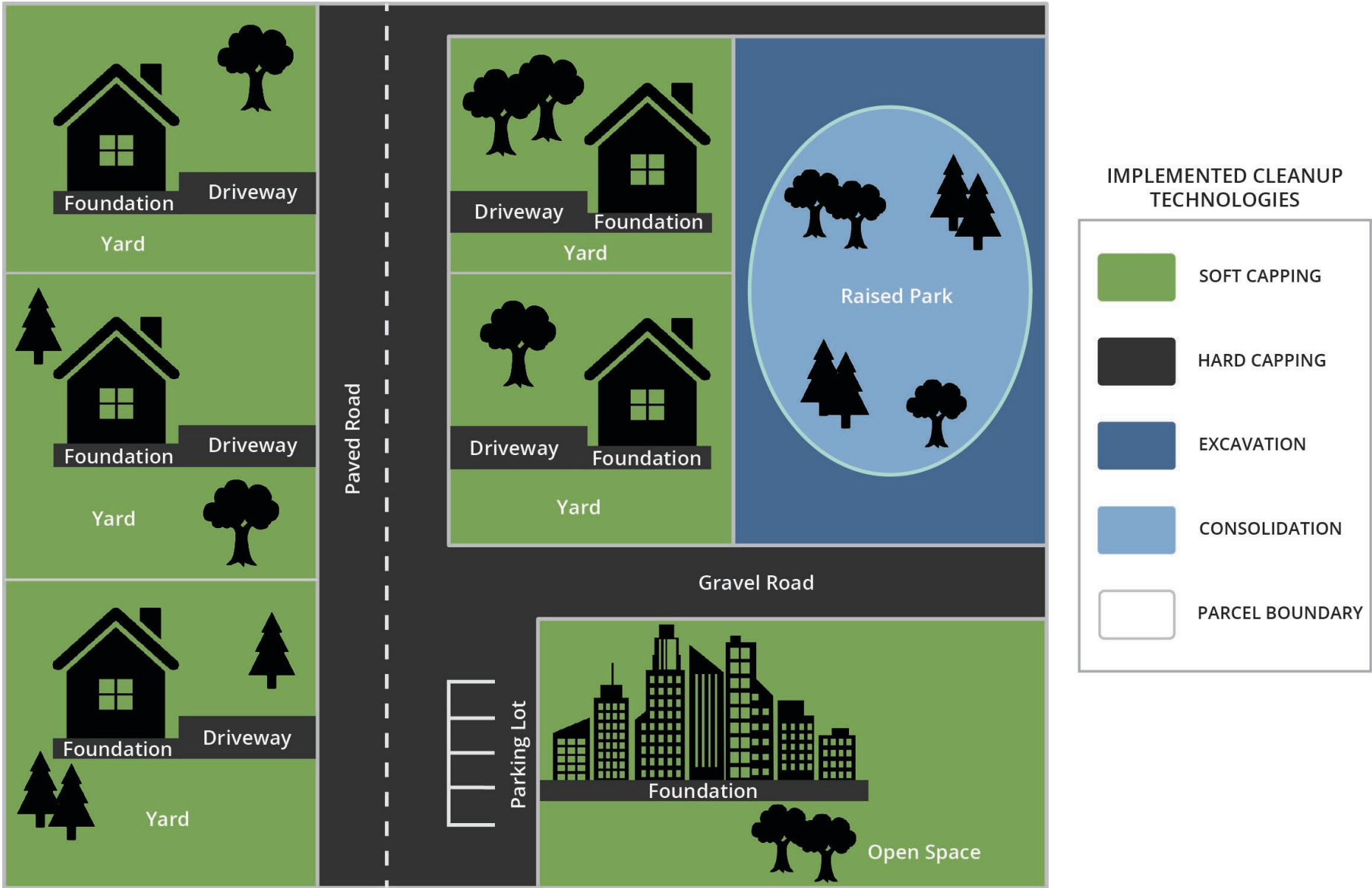
Model Remedy



Model Remedy 101



Example : Multiple Cleanup Scenario



Clean Soil Bank Models



SUBDIVISION PROCESS

BUILDING/CONSTRUCTION PROCESS

Tools

- Ecology Dirt Alert Web Map
- Ecology Soil Sampling
- Outreach and Education Materials
- Ecology Model Remedy

- Model Developer Agreements
- Model Notice to Owners
- Self-Certification Forms

PRELIMINARY PLAT

Developer Due Diligence

Pre-application Meeting

Application Submission

Agency review (SEPA Review, if needed)

Preliminary Approval with Conditions

Developer Complies with Conditions

Application for Final Plat Approval

Final Plat Approval When Conditions are Met

Plat is Recorded

Building/Construction Permitting Begins

FINAL PLAT

Developer Due Diligence

Pre-application Meeting

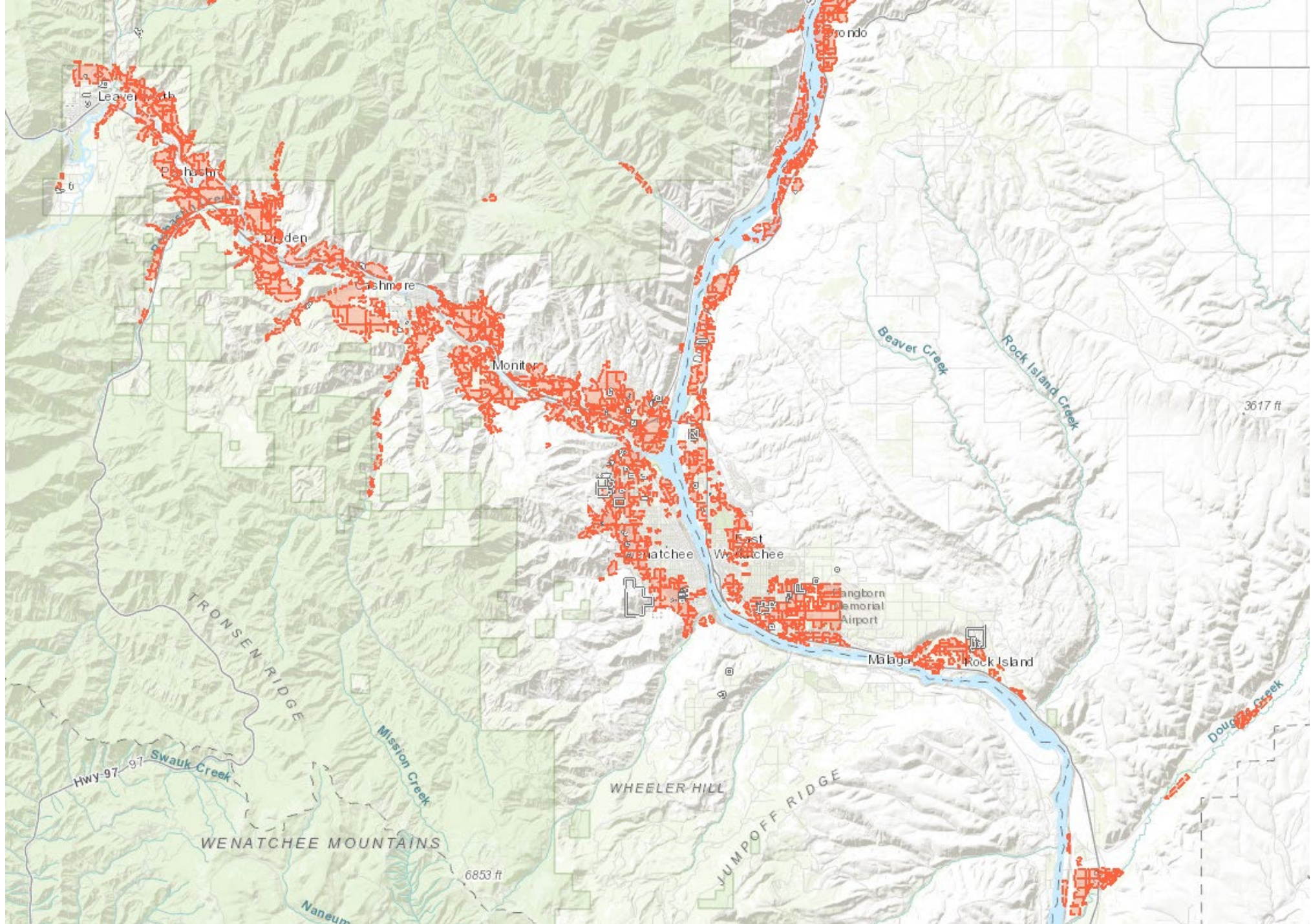
Application Submission

Agency review (SEPA Review, if needed)

Permit Issued

Construction & Inspections

Certificate of Occupancy

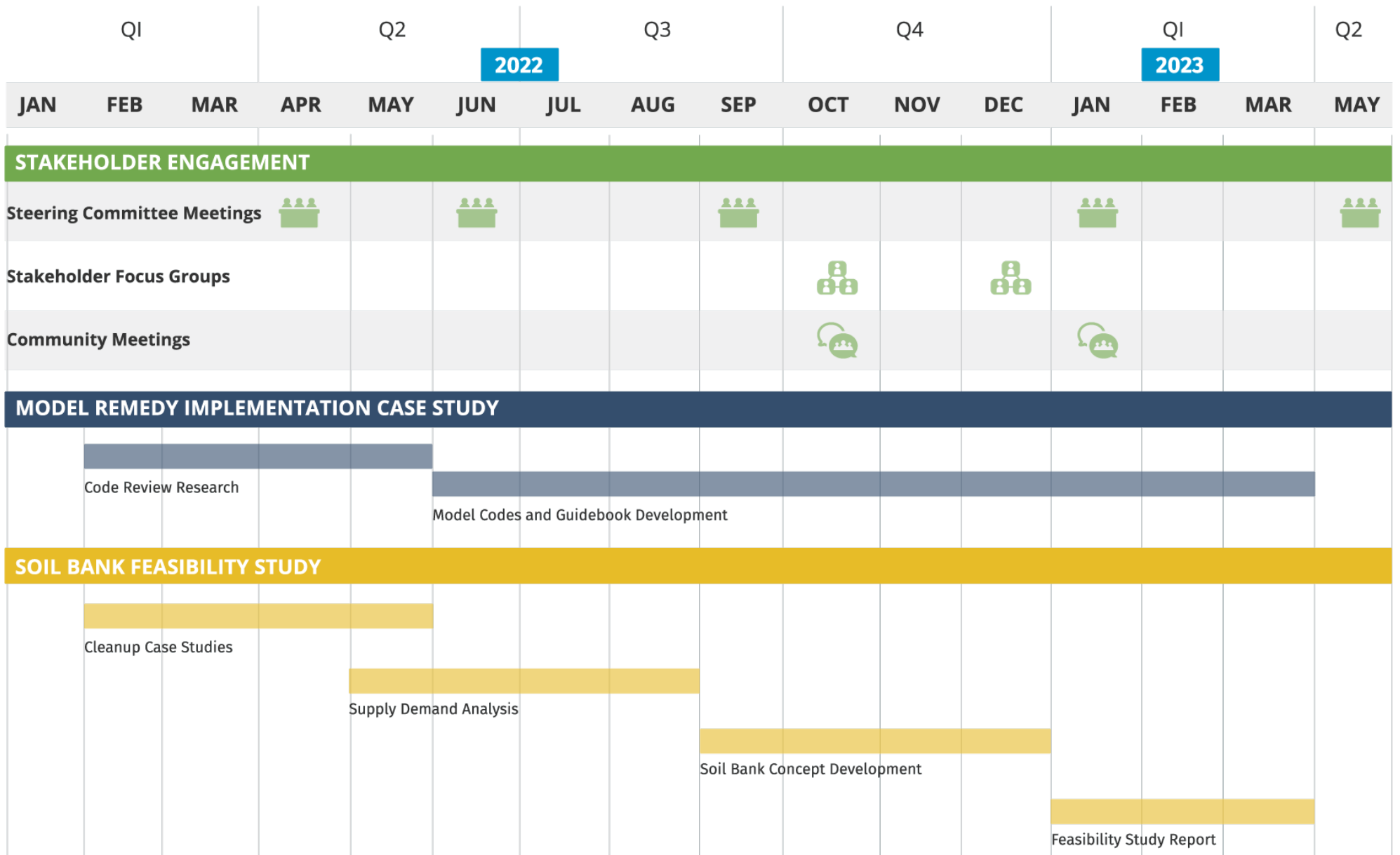


Former Orchards



The background of the slide is a lush green landscape. In the foreground, there are apple trees with many ripe, red apples hanging from the branches. The trees are set against a backdrop of a calm lake and rolling green hills under a clear sky. The entire image has a semi-transparent green overlay to make the white text stand out.

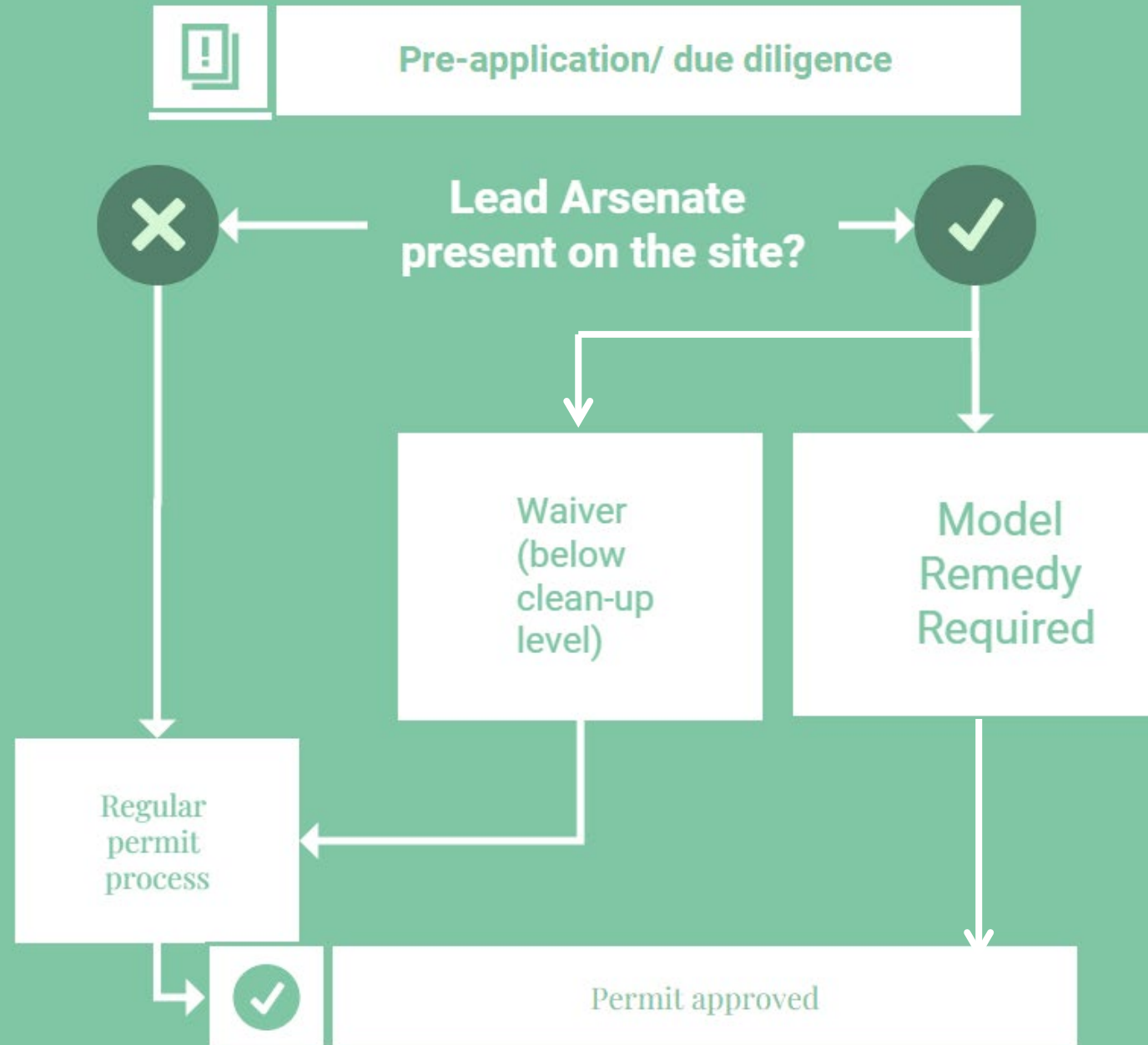
PROCESS & TIMELINE



The background of the slide is a lush green landscape. In the foreground, there are apple trees with many ripe red apples hanging from the branches. The trees are set against a backdrop of a calm lake and rolling green hills under a clear sky. The entire image has a semi-transparent green overlay to make the white text stand out.

PERMITTING PROCESS DISCUSSION

Permit process



BEN JOHNSON

Project Planner

bjohnson@maulfoster.com

206.507.9420



MAUL FOSTER ALONGI

FERDOUSE ONEZA

foneza@onezaassociates.com

206.981.8200



PAUL JEWELL

Policy Director

pjewell@wsac.org

360.489.3024

