



— BUREAU OF —
RECLAMATION

Yakima Water Supply Meeting WY2025

May 5, 2025

Pic: Bumping Apr 17, 2025

Agenda

- Daily Operations
- Irrigation Districts
- Water Management
- Fish Status
- Next Meetings



US BUREAU OF RECLAMATION
YAKIMA PROJECT
SYSTEM STATUS AT 06:00, Monday, 05-May-2025

RESERVOIR	FOREBAY ELEVATION	CONTENT	TOTAL CAPACITY	PERCENT CAPACITY	RESERVOIR INFLOW	RESERVOIR RELEASES
	FB	AF	AF	%	CFS	CFS
Keechelus	2487.63	91440.	157800.	58.	530.	308.
Kachess	2235.28	127806.	239000.	53.	502.	36.
Cle Elum	2192.52	233056.	436900.	53.	2077.	434.
Bumping	3423.12	30044.	33970.	88.	724.	785.
Rimrock	2894.31	127410.	198000.	64.	906.	271.
Clear Cr	3011.44					
TOTALS		609756.	1065400.	57.	4739.	1834.

IRRIGATION DIVERSIONS

	CFS
Kittitas	559.
Roza	444.
Yakima-Tieton	150.
Wapato	1226.
Sunnyside	732.
MAJOR USERS TOTAL	3111.
Westside	105.
Naches-Selah	106.
OTHERS ABOVE PARKER	1180.

TOTAL ABOVE PARKER 4502.

Kennewick 186.

OTHER CANAL DIVERSIONS

Wapatox	51.	
Roza at Headworks	460.	No Generation, all panels down.
Chandler	570.	No Generation.

RIVER FLOWS

	CFS
Yakima River at Easton	177.
Teanaway River at Forks	693.
Yakima River near Horlick	1591.
Yakima River near Umtanum	2223.
Yakima River blw Roza Dam	1560.
Naches River nr. Clf'Dell	2164.
Tieton Rvr belw Cnl Hdws	224.
Naches River near Naches	4137.
Yakima River near Parker	2897.
Yakima River near Prosser	3442.

UNREGULATED TRIBUTARY & RETURN FLOW ABOVE PARKER

5354. CFS



OPERATIONAL COMMENTS: Storage is 74.5% of average (1991, 2020).

Precipitation at the five reservoirs for MAY 1 to date is 0.30 inches, or 23% of average and 3% of the months average. Precipitation for the Water Year(OCT01 To MAY04)is 157.73 inches, or 80% of average. The Mountains will be sunny. Highs in the 60's. The valleys will be sunny. Highs in the 70's. Northeast wind 5-10 MPH. For the complete forecast go to <http://www.wrh.noaa.gov/pdt/>. Pulse Flow release will ramp down today. Keechelus will increase 75 CFS, Cle Elum will decrease approx. 250 CFS and Rimrock will decrease approx. 90 CFS. Kittitas Canal will add 50 CFS, Roza will add 35 CFS, Yakima-Tieton will add 30 CFS and Sunnyside Canal will cut 50 CFS. No other System changes expected. Irrigation diversion changes must be coordinated with the YFO, Please allow 48 hours advance notice. Thank You! NRCS Snotel, SWE for the Upper Yakima Basin are reporting 46% of average and Naches Basin sites are at 73% of average. For further information contact the River Operator at 509-573-8112 or go to <https://www.usbr.gov/pn/hydromet/yakima>. The next River Ops meeting at YFO and via Teams, today at 10:30 AM. Have a good day!!!!

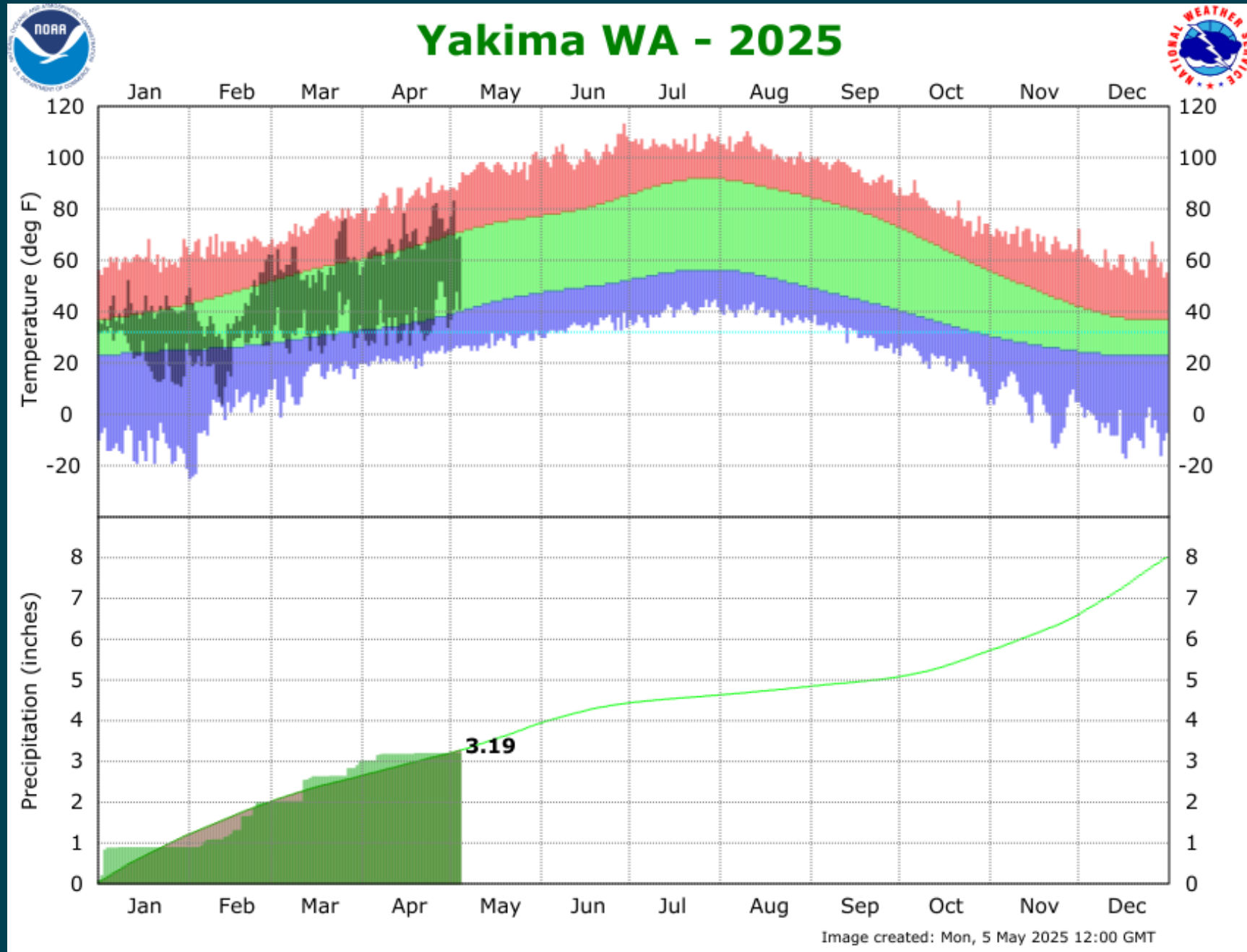
<http://www.usbr.gov/pn/hydromet/yakima/yakstats.html>

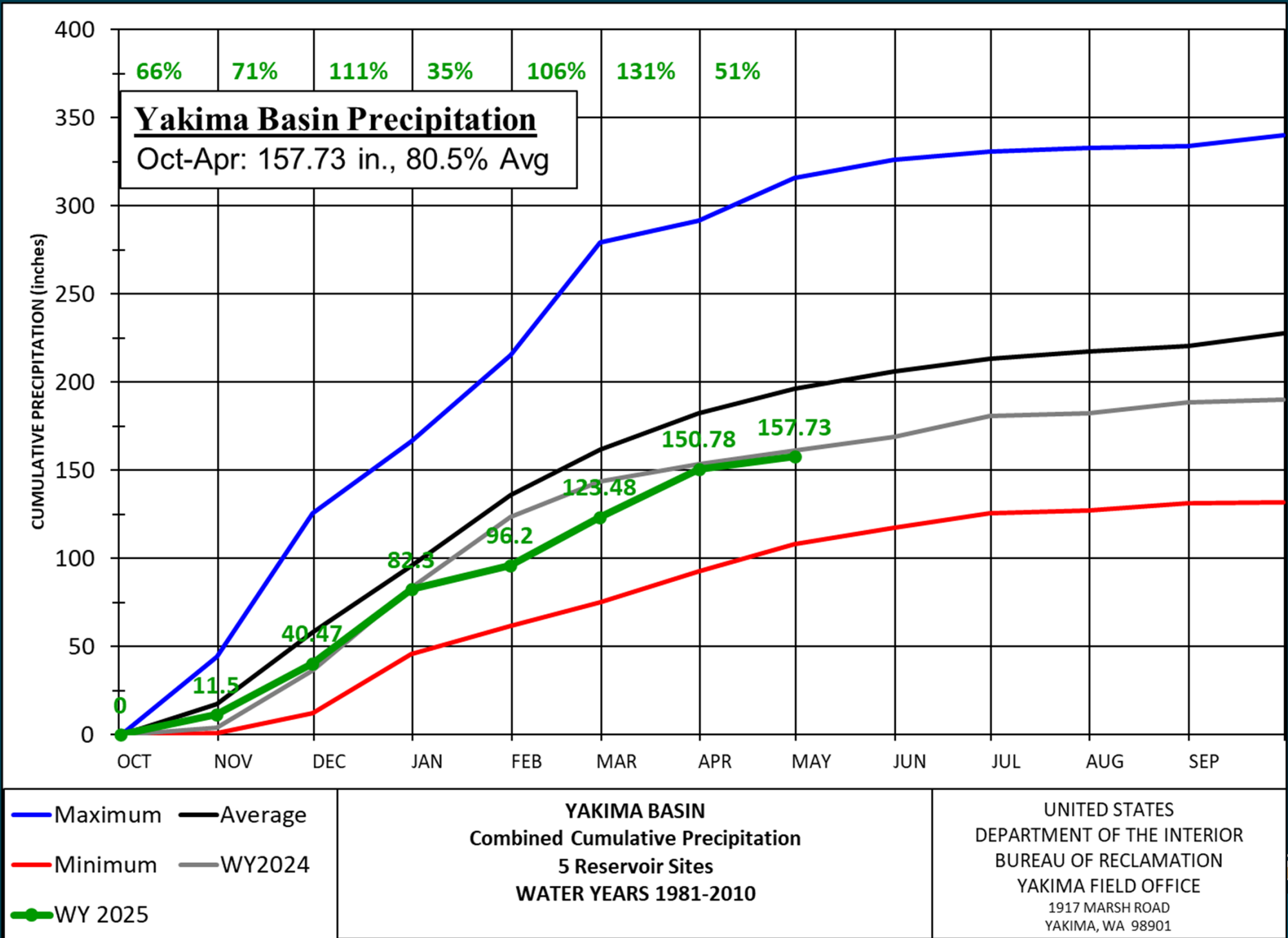


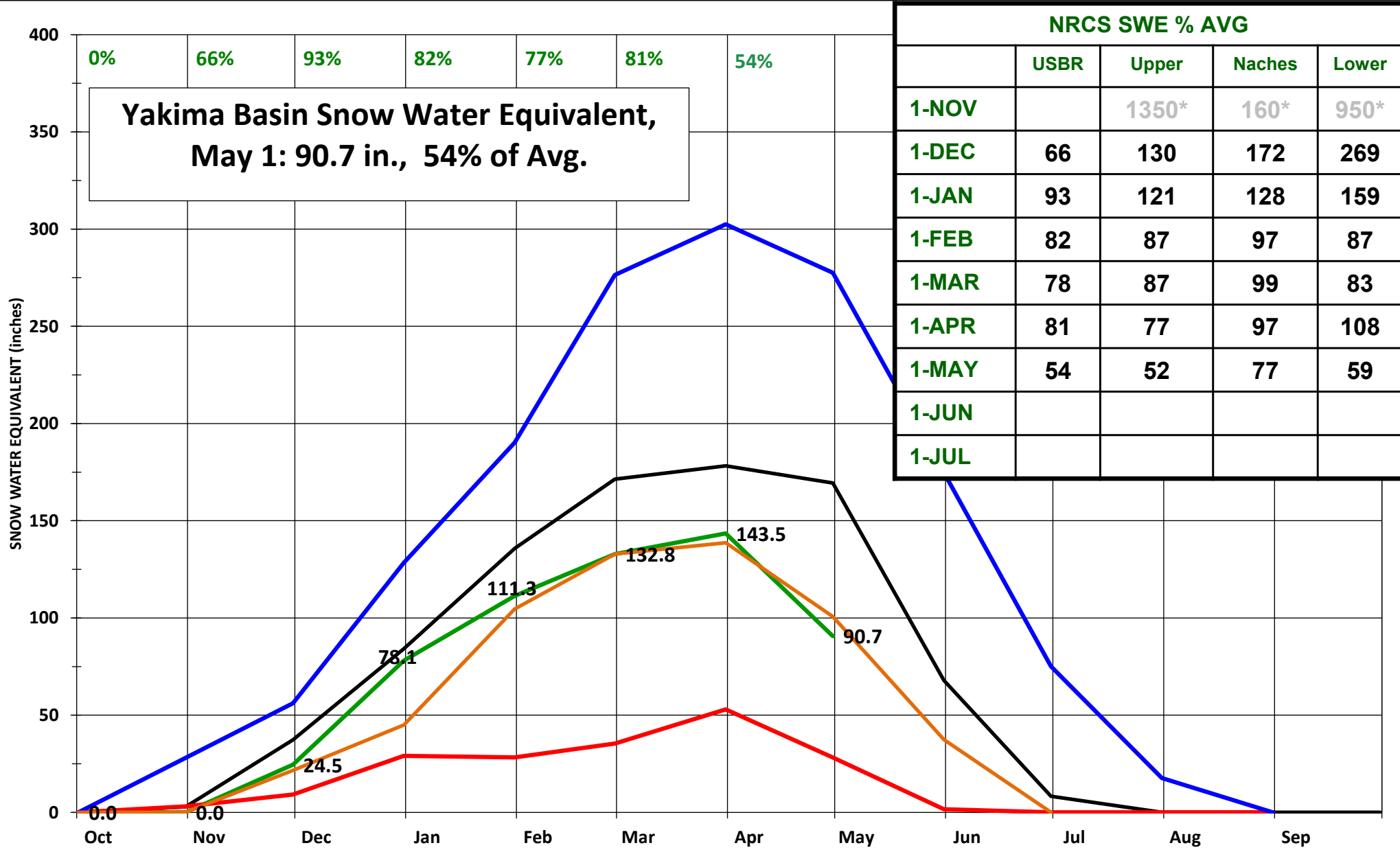
Irrigation Districts

- 48-hour notice for diversion changes

Valley Weather 2025 – KYKM (Yakima Airport)





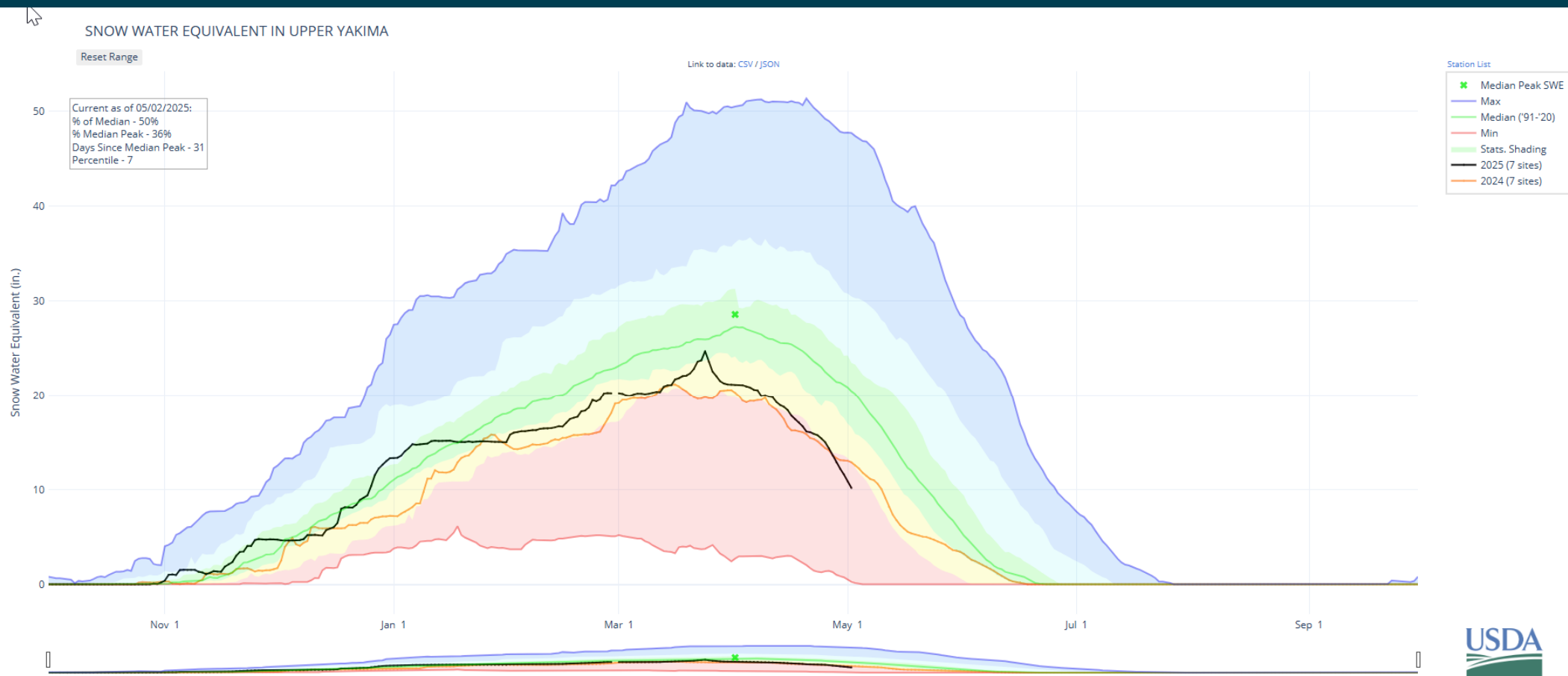


— Water Year 2025 — Average
— Low Year (2005) — High Year (1999)
— WY24 Total

**YAKIMA BASIN WATER YEAR
SNOW WATER EQUIVALENT**
Average based on greater of 1971-2000 or POR-1995
Totals derived from 7 Yakima forecast sites
Corral, Stampede, Olallie, Fish, Bumping, Domerie, & Tunnel Avenue

UNITED STATES
DEPARTMENT OF THE INTERIOR
BUREAU OF RECLAMATION
YAKIMA FIELD OFFICE
1917 MARSH ROAD
YAKIMA, WA 98901

Yakima Basin SNOTEL – Upper Yakima



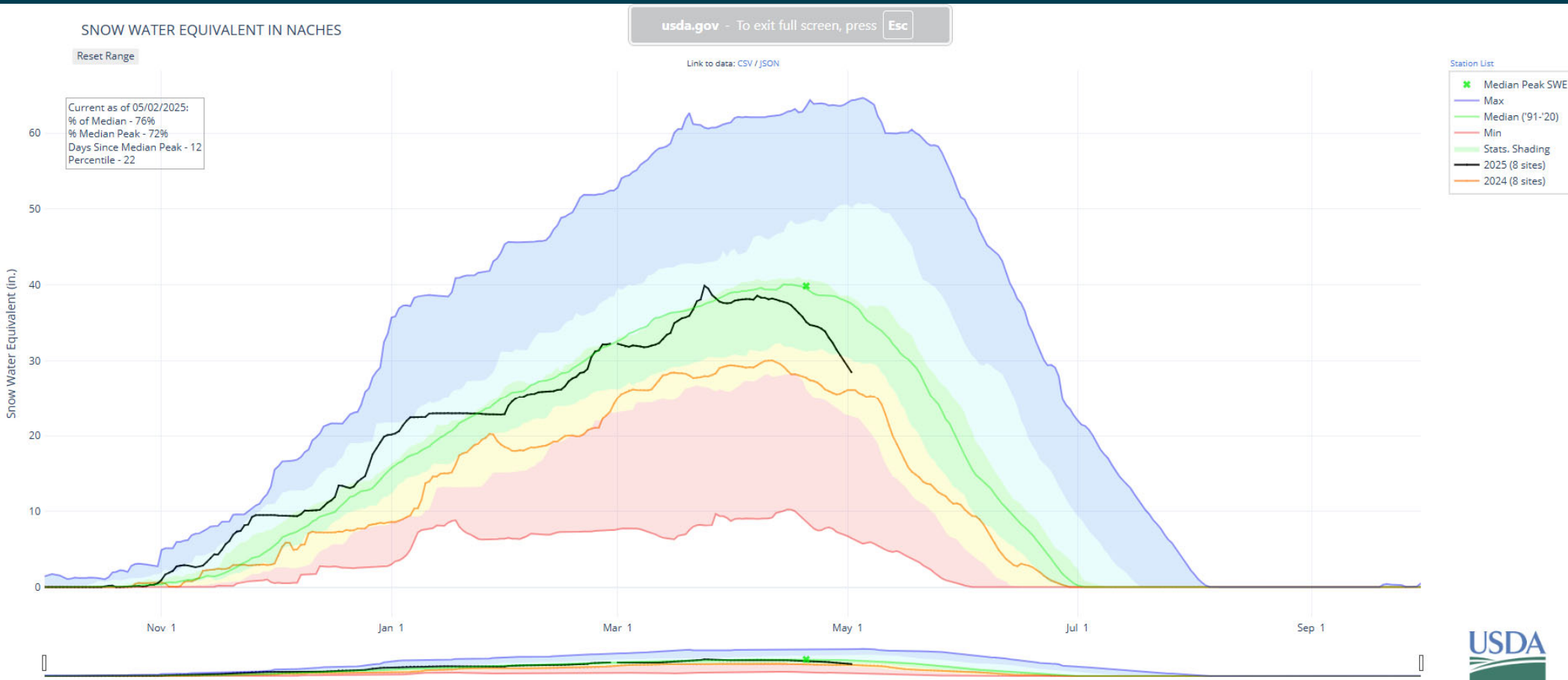
Statistical shading percentiles are calculated from period of record (POR) data, excluding the current water year. Percentile categories range from: minimum to 10th percentile, 10th - 30th, 30th - 70th, 70th - 90th, and 90th - maximum.

For more information visit: [30-Year Hydroclimatic Normals](#)

Updated: Friday, May 02, 2025 01 PM CST



Yakima Basin SNOTEL - Naches



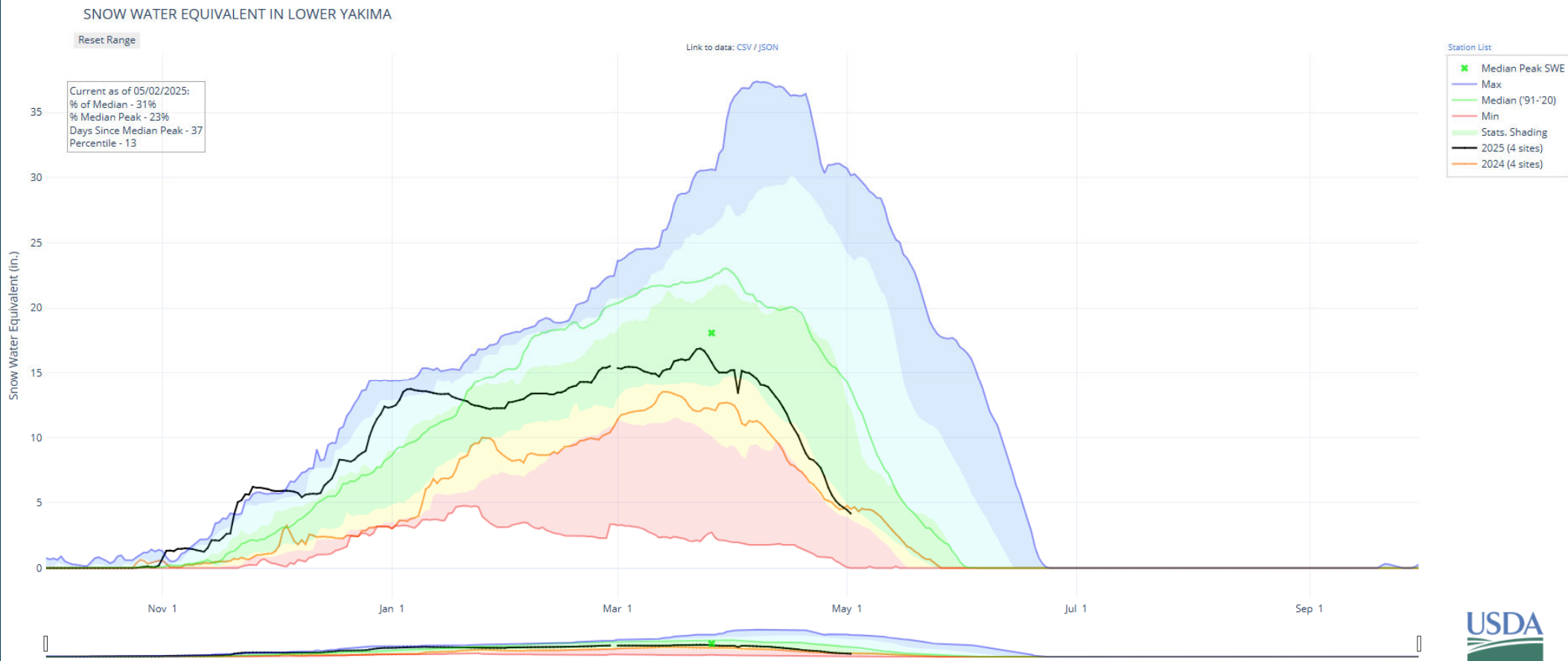
Statistical shading percentiles are calculated from period of record (POR) data, excluding the current water year. Percentile categories range from: minimum to 10th percentile, 10th - 30th, 30th - 70th, 70th - 90th, and 90th - maximum.

For more information visit: [30-Year Hydroclimatic Normals](#)

Updated: Friday, May 02, 2025 01 PM CST



Yakima Basin SNOTEL – Lower Yakima

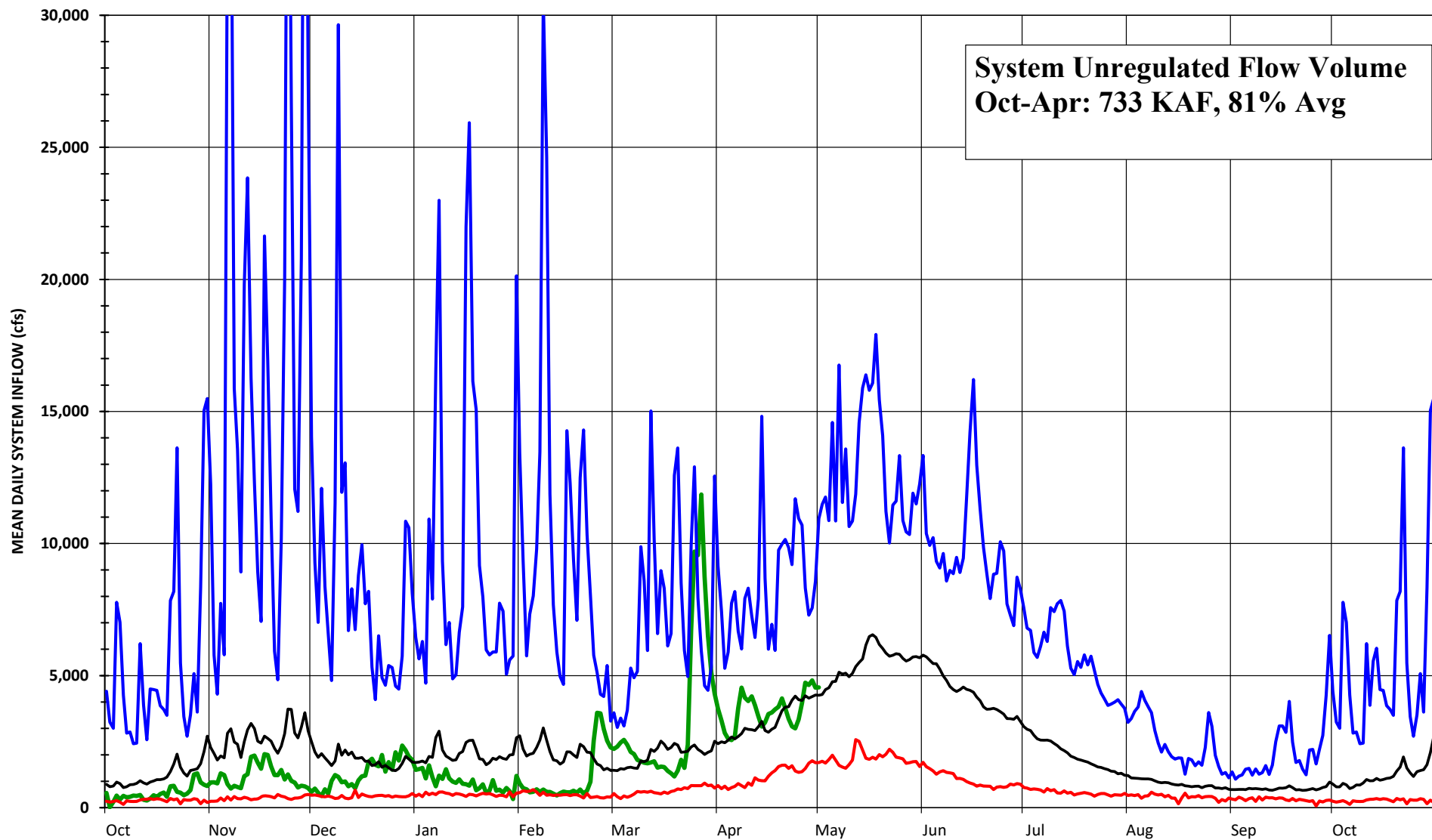


Statistical shading percentiles are calculated from period of record (POR) data, excluding the current water year. Percentile categories range from: minimum to 10th percentile, 10th - 30th, 30th - 70th, 70th - 90th, and 90th - maximum.

For more information visit: [30-Year Hydroclimatic Normals](#)

Updated: Friday, May 02, 2025 01 PM CST



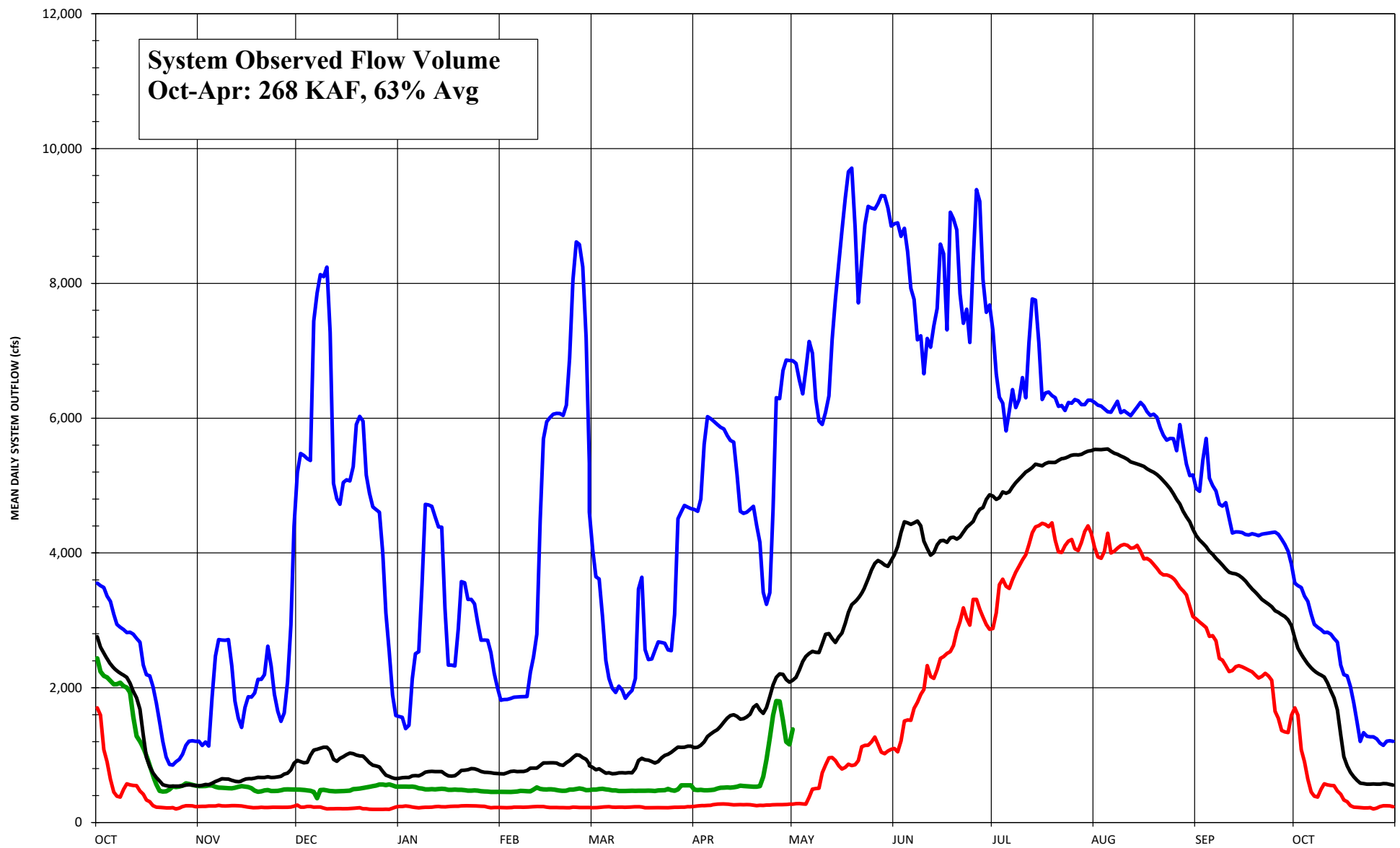


— Water Year 2025 — Min — Avg — Max

**YAKIMA PROJECT
SYSTEM RESERVOIRS
SUM OF INFLOWS
SUMMARY HYDROGRAPH
WATER YEARS 1991-2020**

UNITED STATES
DEPARTMENT OF THE INTERIOR
BUREAU OF RECLAMATION
YAKIMA FIELD OFFICE
1917 MARSH ROAD
YAKIMA, WA 98901



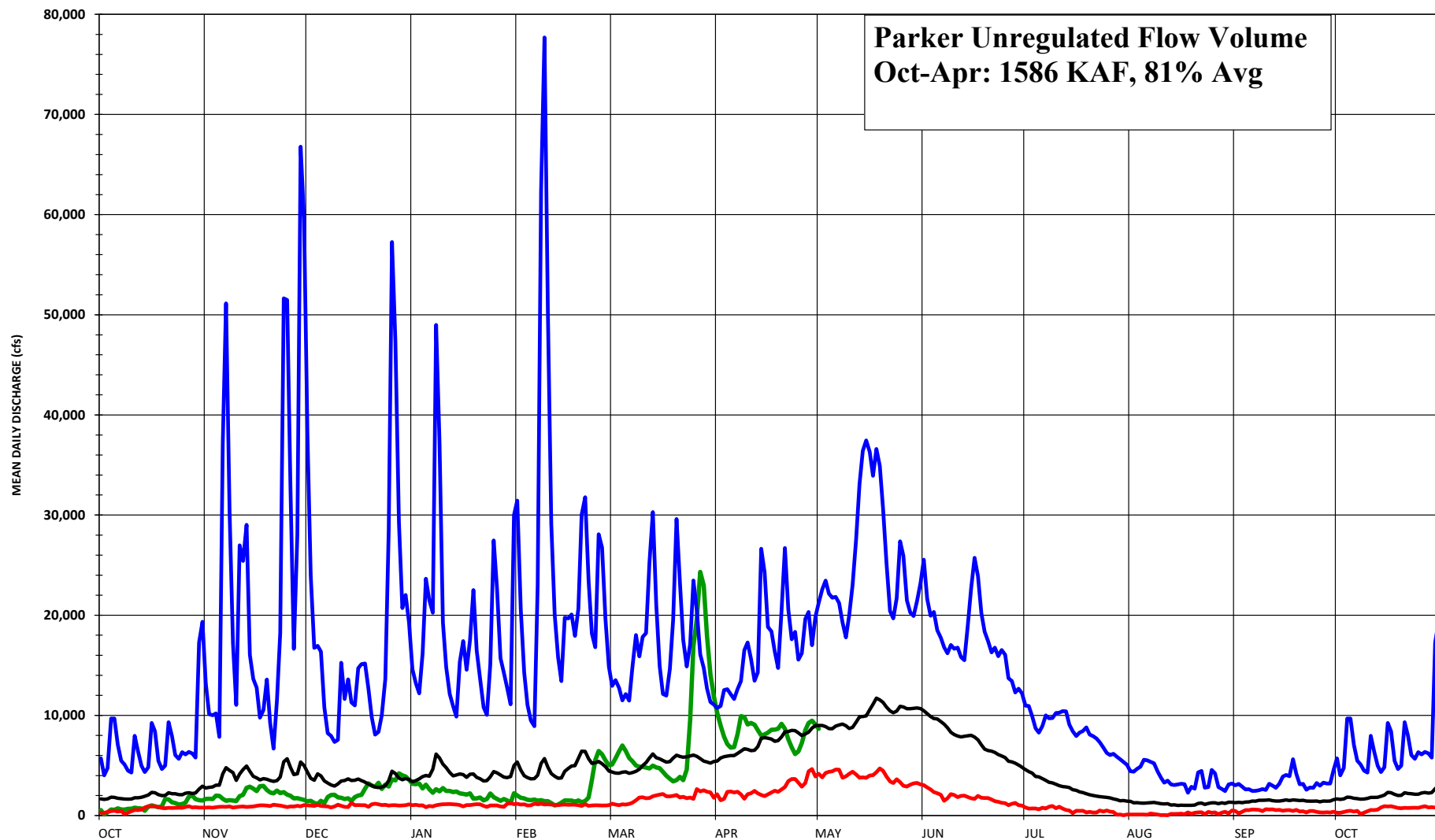


— Water Year 2025 — Minimum

— Average — Maximum

**YAKIMA PROJECT SYSTEM RESERVOIRS
SUM OF OUTFLOWS
SUMMARY HYDROGRAPH
WATER YEARS 1991-2020**

UNITED STATES
DEPARTMENT OF THE INTERIOR
BUREAU OF RECLAMATION
YAKIMA FIELD OFFICE
1917 MARSH ROAD
YAKIMA, WA 98901

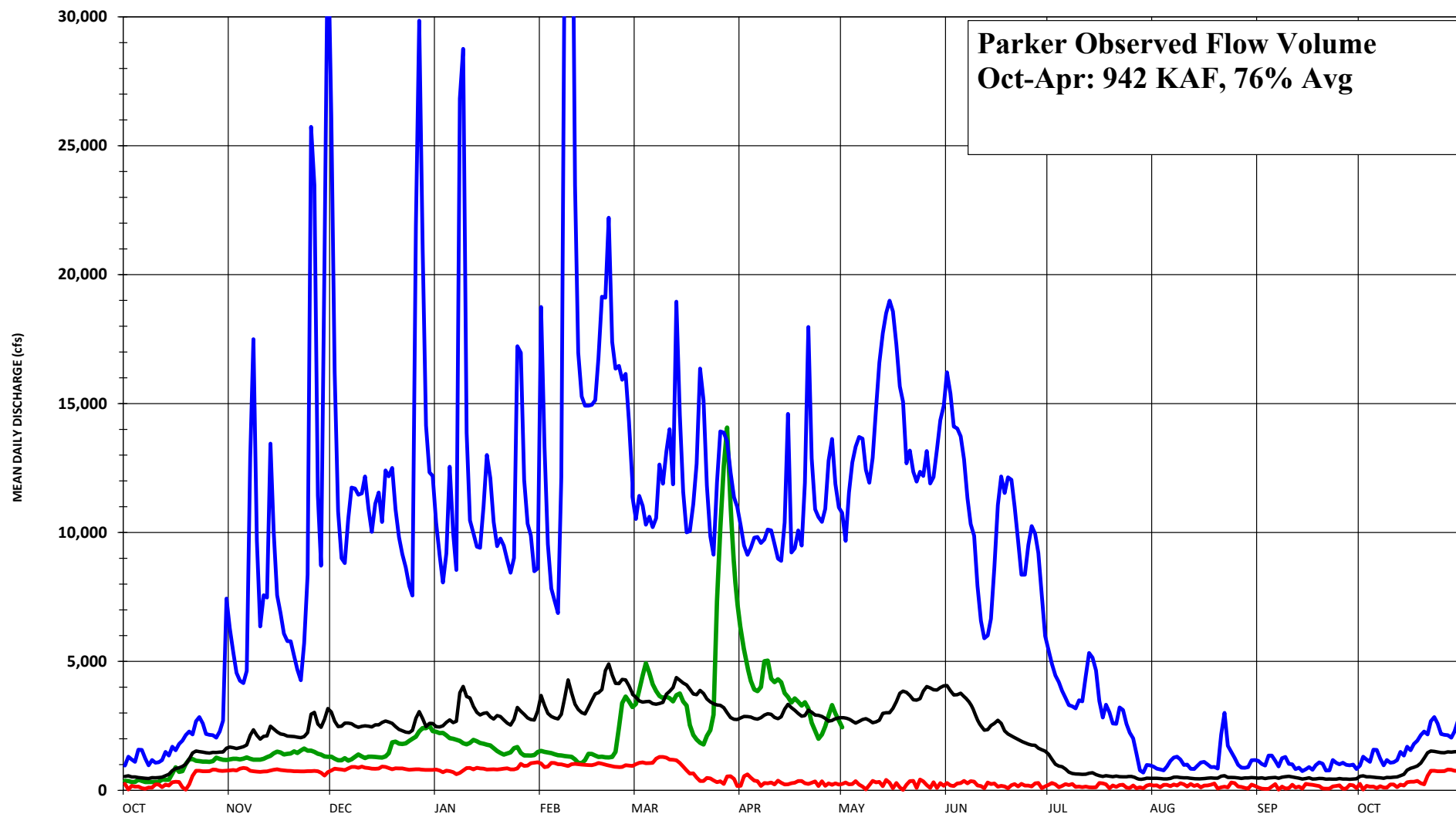


— Water Year 2025 — Minimum
— Average — Maximum

YAKIMA RIVER NEAR PARKER
 MEAN DAILY UNREGULATED DISCHARGE
 SUMMARY HYDROGRAPH
 WATER YEARS 1991-2020

UNITED STATES
 DEPARTMENT OF THE INTERIOR
 BUREAU OF RECLAMATION
 YAKIMA FIELD OFFICE
 1917 MARSH ROAD
 YAKIMA, WA 98901



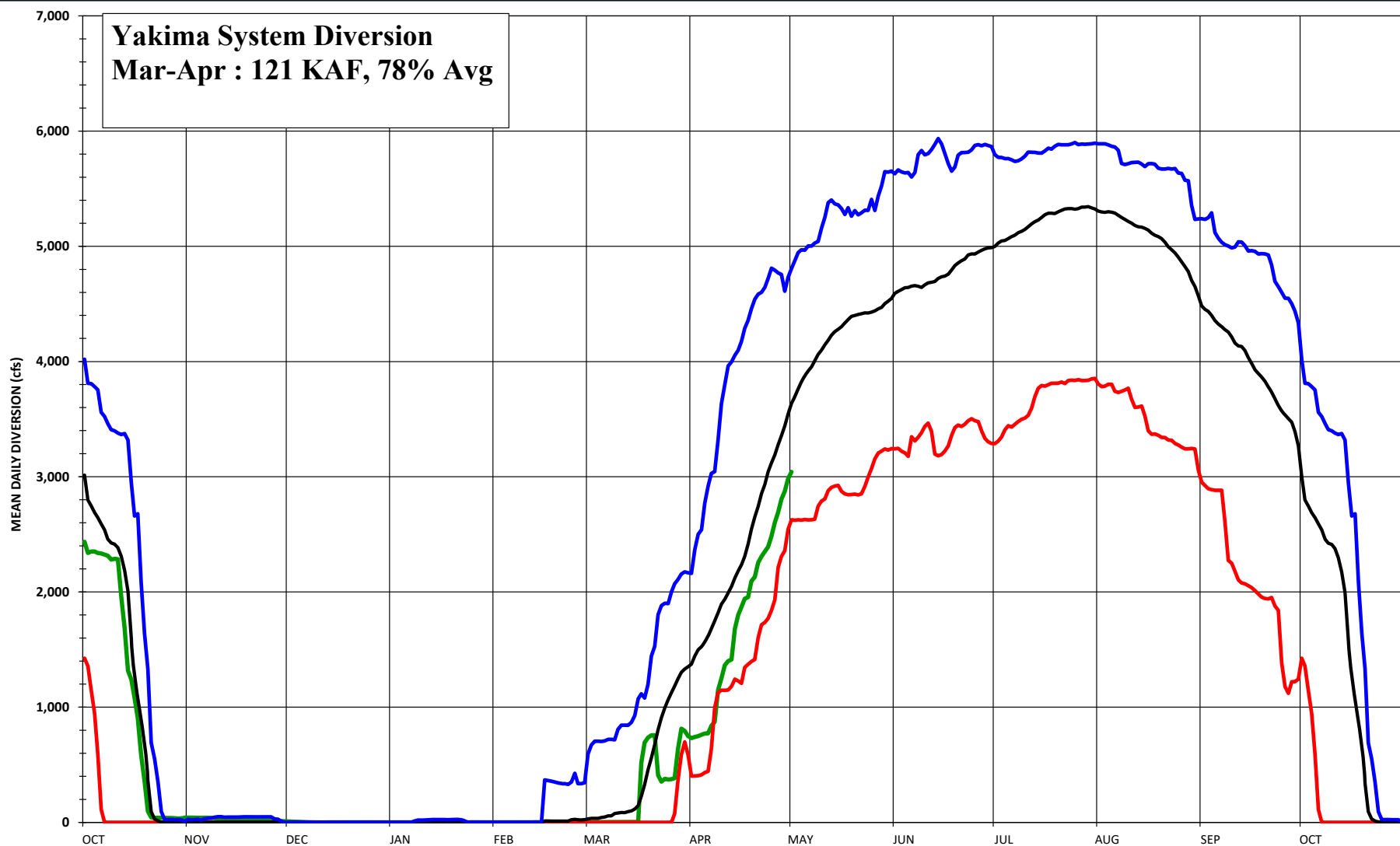


— Water Year 2025 — Minimum
— Average — Maximum

**YAKIMA RIVER NEAR PARKER
 MEAN DAILY REGULATED DISCHARGE
 SUMMARY HYDROGRAPH
 WATER YEARS 1991-2020**

UNITED STATES
 DEPARTMENT OF THE INTERIOR
 BUREAU OF RECLAMATION
 YAKIMA FIELD OFFICE
 1917 MARSH ROAD
 YAKIMA, WA 98901



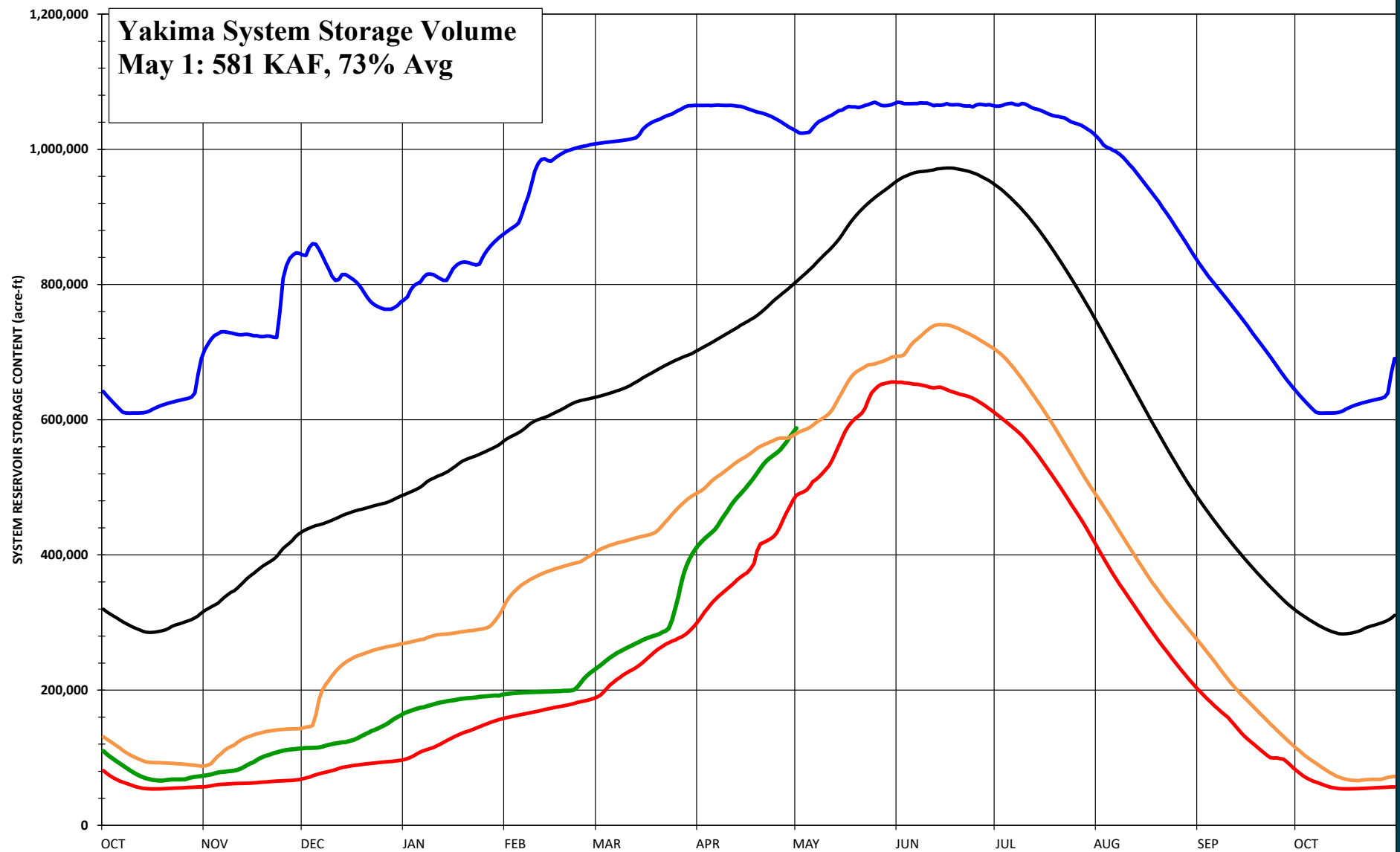


— Water Year 2025 — Minimum
— Average — Maximum

**5 MAJOR IRRIGATION DIVERSIONS
YAKIMA R. ABOVE PARKER
SUMMARY HYDROGRAPH
WATER YEARS 1991-2020**

UNITED STATES
DEPARTMENT OF THE INTERIOR
BUREAU OF RECLAMATION
YAKIMA FIELD OFFICE
1917 MARSH ROAD
YAKIMA, WA 98901





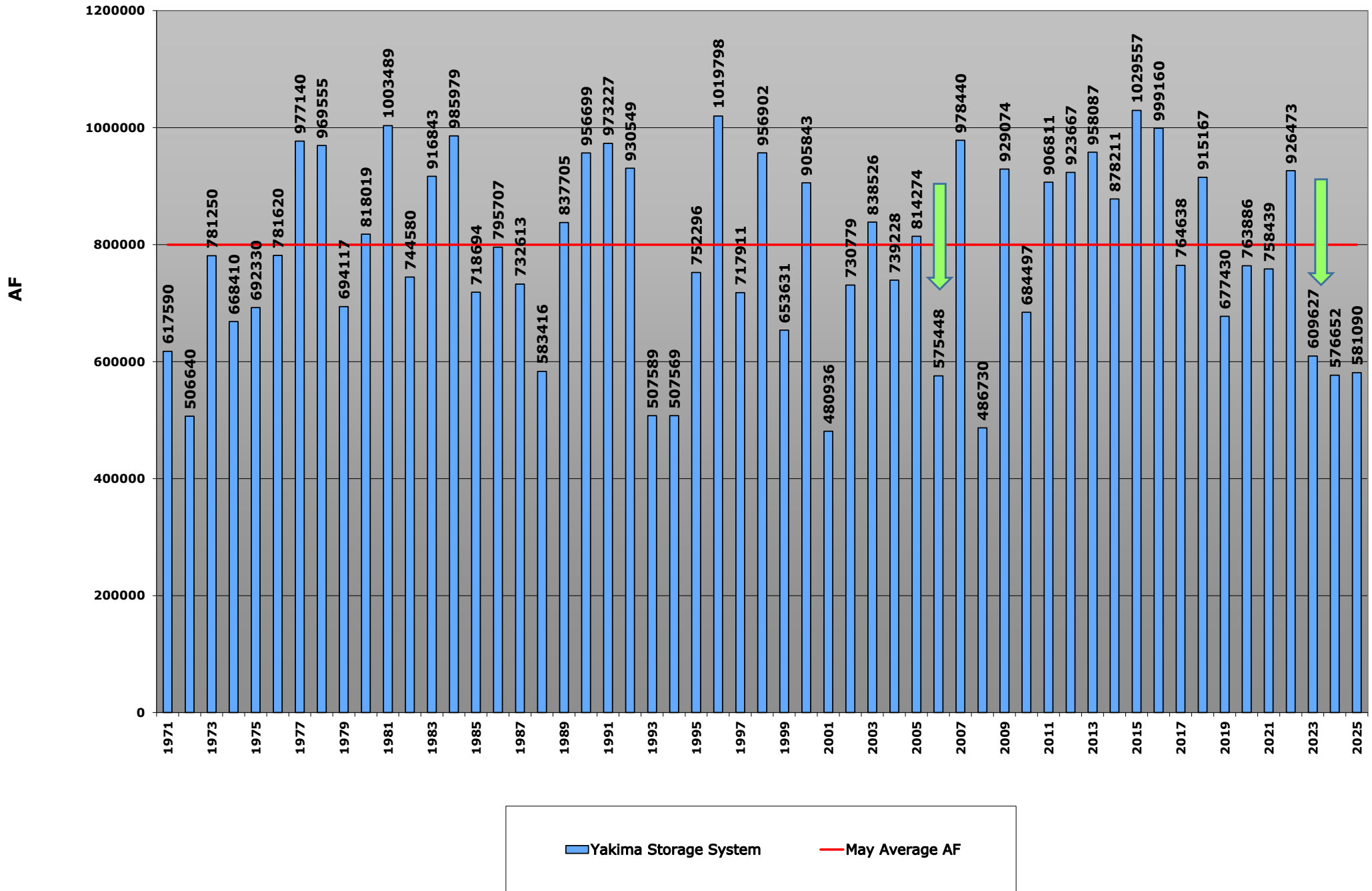
— Water Year 2025 — Max
— Avg — Min
— Water Year 2024

YAKIMA PROJECT STORAGE
MEAN DAILY RESERVOIR VOLUME
SUMMARY HYDROGRAPH
WATER YEARS 1991-2020

UNITED STATES
 DEPARTMENT OF THE INTERIOR
 BUREAU OF RECLAMATION
 YAKIMA FIELD OFFICE
 1917 MARSH ROAD
 YAKIMA, WA 98901



Yakima Basin Storage, Historical Comparison



Climate Prediction Center

<u>Period</u>	<u>Temperature</u>	<u>Precipitation</u>
6-14 day (May 10 – 18)	Above Normal	Above Normal

Seasonal Outlook

Spring (17 Apr)	Normal	Normal
Summer(17 Apr)	Above Normal	Below Normal

“ENSO-neutral conditions are present and is favored during the Northern Hemisphere summer (50% chance in August-October 2025). 28 APR

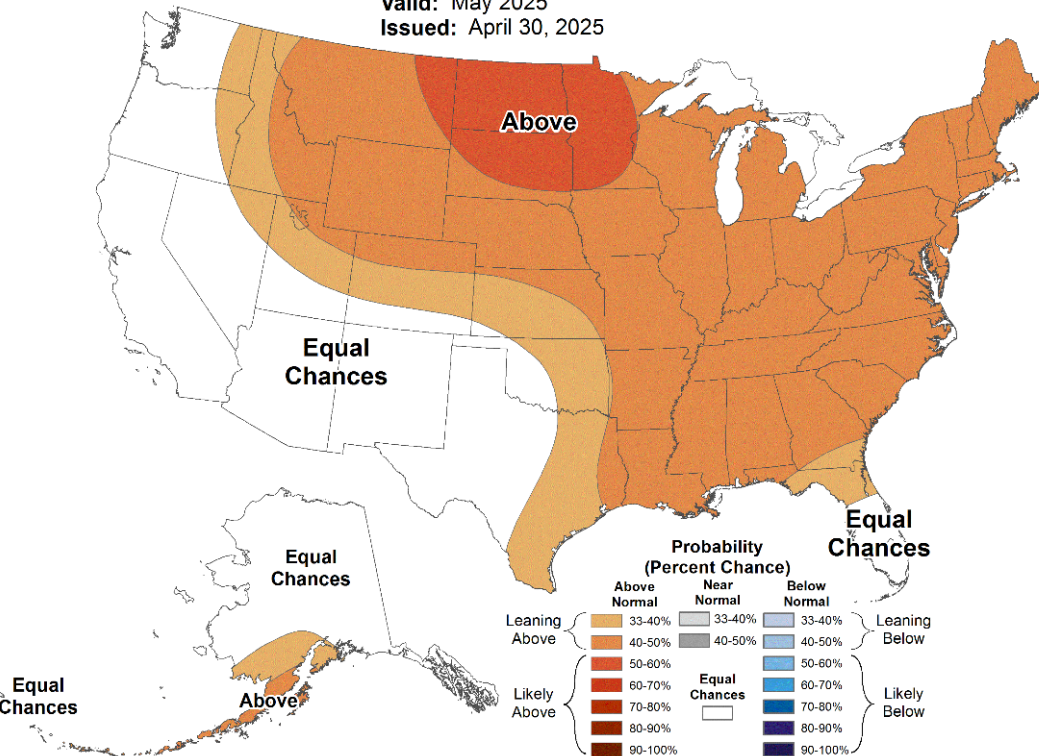


30-Day Forecast



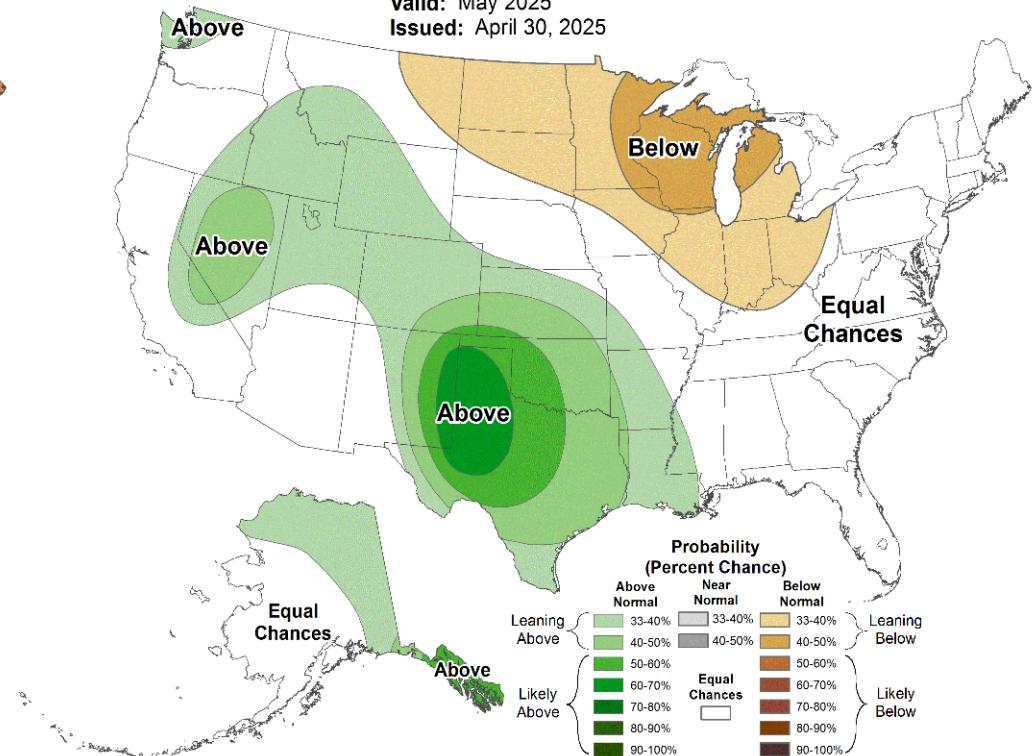
Monthly Temperature Outlook

Valid: May 2025
Issued: April 30, 2025

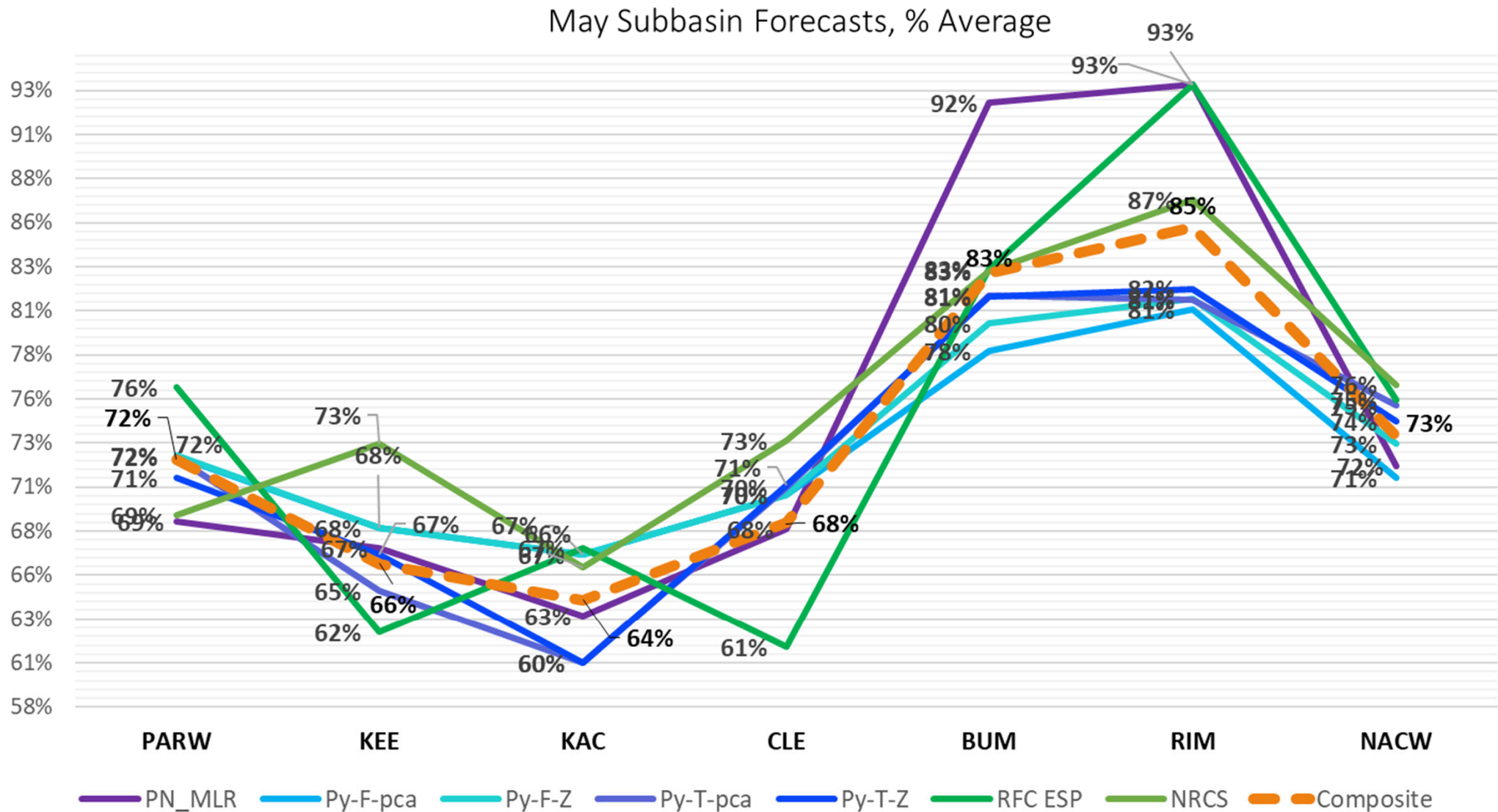


Monthly Precipitation Outlook

Valid: May 2025
Issued: April 30, 2025



Yakima Subbasin Forecasts, WY25



Yakima Subbasin forecasts, WY25

Yakima Basin Forecast May-Jul 2025 (KAF) (% of 30-year Ave)

5/1/2025	Low	Composite	High	Low	Composite	High
PARW	753	900	1,091	60%	72%	87%
KEE	52	58	76	59%	66%	87%
KAC	44	49	62	58%	64%	82%
CLE	194	211	252	63%	68%	82%
BUM	71	78	94	75%	83%	100%
RIM	122	131	152	80%	85%	99%
NACW	380	414	528	67%	73%	94%



May 1, 2025 TWSA ESTIMATE

May 1 - September 30

Parameter*	+/-/=	Low	Adopted	High
May 1-Sep 30 Natural Flow at Parker est.	+	817	986	1215
Return Flow Estimate, est	+	235	260	300
May 1, Reservoir Content, est	+	581	581	581
TWSA	=	1633	1828	2096
SEP 30 EST RESERVOIR CONTENT	-	76	76	76
FLOW OVER SUNNYSIDE DAM	-	190	250	341
TWSA FOR IRRIGATION	=	1367	1501	1679
NONPRORATABLE ENTITLEMENT	-	909	909	909
YRPW-KID release		10	10	10
REMAINING TWSA	=	448	582	760
PRORATABLE ENTITLEMENT		1145	1145	1145
% RATIO= REMAINING TWSA/PRORATABLE ENTITLEMENT		39%	51%	66%
TITLE XII FLOW TARGET, cfs	MAY	300	300	300
Added flow available, cfs ***		100	103	107
Non-storeable Portion of added flow, cfs		8	8	8
Storable portion of added flow, cfs		92	95	99
BA May Pulse Flow Volume		Low-BA	Low-BA	Low-BA

*Values are in 1,000 ac-ft unless otherwise specified.

*** State & YRBWEP Trust, Acquisition, & Conservation additions to Title XII flow range from 100 to 107 cfs.



May 1, 2025 TWSA Comparison

May 1 - September 30

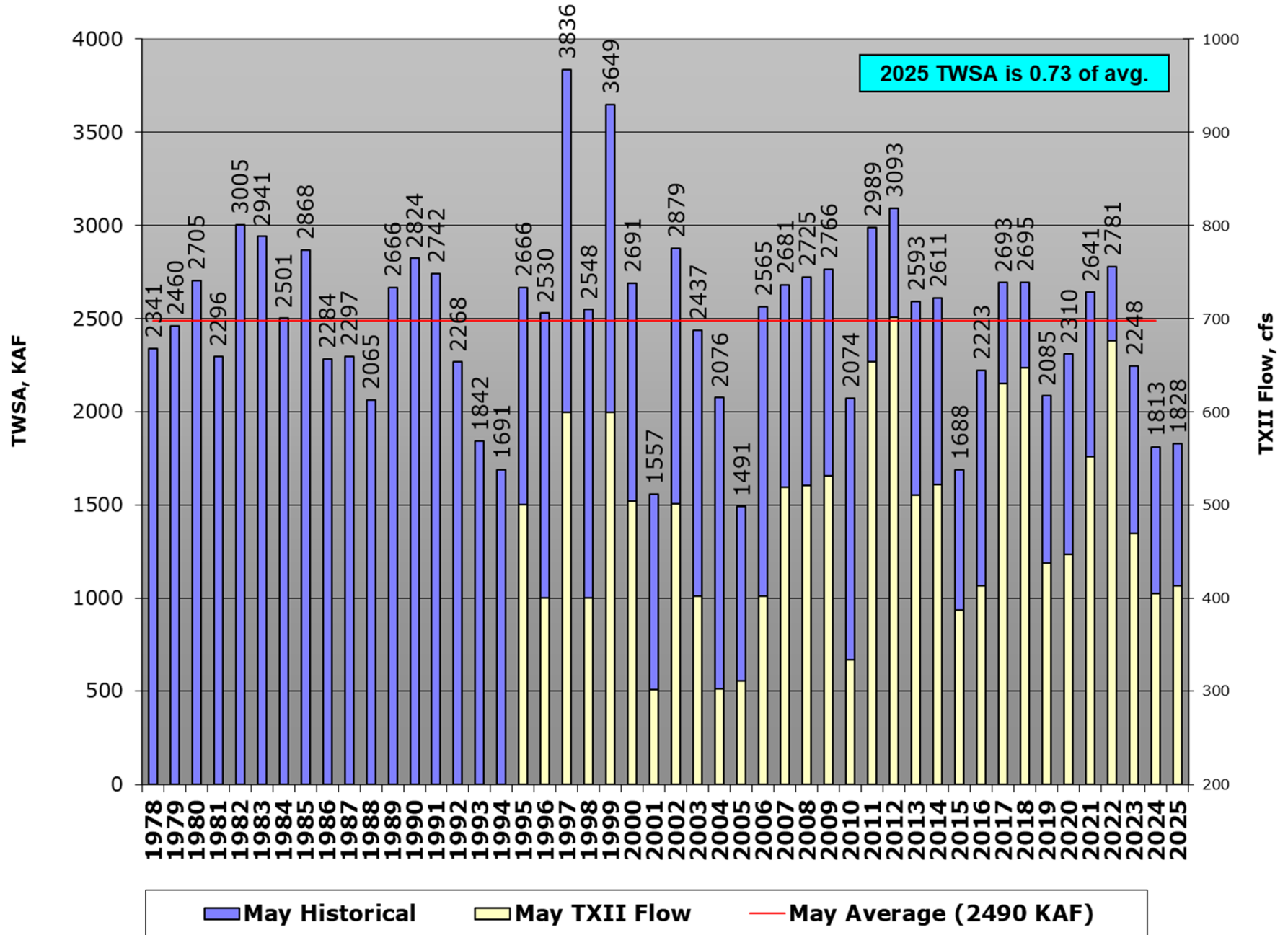
Parameter	"+/-/="	Mar's 2025	Apr's 2025	May's 2025
Apr 1/May 1-Sep 30 Natural Flow at Parker est.	+	1450	1567	986
Return Flow Estimate	+	270	310	260
April 1/May 1, Reservoir Content	+	304	407	581
TWSA	=	2025	2284	1822
SEP 30 EST RESERVOIR CONTENT*	-	76	76	76
FLOW OVER SUNNYSIDE DAM	-	283	415	250
TWSA FOR IRRIGATION	=	1666	1793	1507
NONPRORATABLE ENTITLEMENT	-	1070	1070	909
REMAINING TWSA	=	596	723	588
PRORATABLE ENTITLEMENT		1239	1239	1145
% RATIO= REMAINING TWSA/PRORATABLE ENTITLEMENT		48%	58%	51%
TITLE XII FLOW REQUIREMENTS, cfs	April	300	300	300
TOTAL FLOW AVAILABLE AT PARKER, cfs ***		425	428	403

*Values are in 1,000 ac-ft unless otherwise specified.

*** State & YRBWEP Trust, Acquisition, & Conservation additions to Title XII flow.

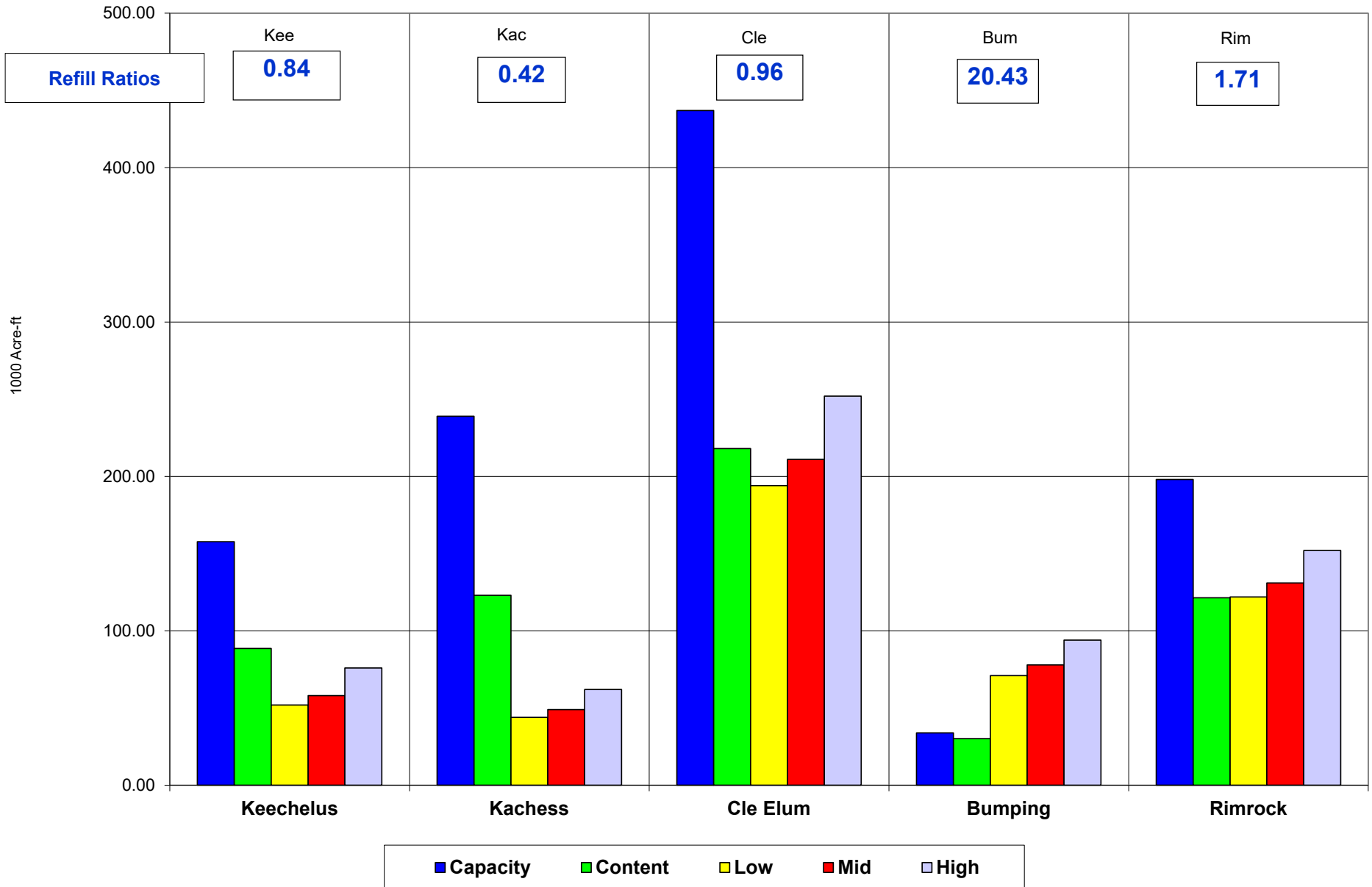


May TWSA Historical Comparison



May 2025

Yakima Project Runoff Forecast to Reservoir Space Available



Construction Projects in WY 2025

- Cle Elum Adult facility construction ongoing
 - Impact CLE outflow gage readings
 - Ramp-down will be similar to WY24 ops
- Kac SOD construction
 - Will constrain Kac usage until July
- WW1146
 - Currently scoping design & construction solutions
- Clear Creek Dam
 - Fall draw-down for fish passage construction



Yakima Basin Spring Operations

- **Power Subordination Flows**
 - YRPW subordination is 5000 cfs (WY2025)
 - RBDW subordination 1300 cfs
- **Outmigration Flows**
 - April 23-28, 2025:
 - RIM 1456 AF, CLE 2442 AF, BUM 1634 AF, EASW volume (1-29 APR > 180cfs) 8431 AF
 - May 1-5, 2025:
 - Est RIM 1450 AF, est CLE 2450 AF

Monthly Min. Acre-feet Released for Fish Outmigration				
APRIL	0%-69%	70%-89%	90%-99%	< 100%
MAY	0%-69%	70%-89%	90%-99%	< 100%
RIM/NAC	4,500 AF	8,400 AF	14,800 AF	17,000 AF
CLE	4,200 AF	9,900 AF	18,800 AF	20,000 AF
EASW	3,700 AF	4,800 AF	9,900 AF	13,000 AF

Yakima Basin Conservation Water

potential storable volume, WY2025

2024	Volumes of storable/moveable water from SCD to Sep 30						
Proration	<u>15-Apr</u>	<u>1-May</u>	<u>15-May</u>	<u>1-Jun</u>	<u>10-Jun</u>	<u>20-Jun</u>	<u>1-Jul</u>
0.37	21,268	19,255	17,493	15,354	14,221	12,962	11,578
0.45	21,927	19,851	18,034	15,829	14,661	13,364	11,936
0.55	22,749	20,595	18,711	16,422	15,211	13,865	12,384
0.65	23,572	21,340	19,387	17,016	15,761	14,366	12,832
0.7	23,983	21,712	19,726	17,313	16,036	14,617	13,056
0.75	33,512	30,339	27,563	24,192	22,408	20,425	18,243
0.9	37,421	33,878	30,778	27,014	25,021	22,807	20,371
1	38,482	34,839	31,651	27,780	25,731	23,454	20,949

This table shows the potential storable water given the proration rate (left column) and the storage control date (header row)



Yakima Basin Natural Runoff Proportion

- **Objective of NRP is to delay release of storage and improve water supply and Voluntary**
- **Irrigation diversions are limited to available supply**
- **Available supply is incidental reservoir outflows plus unregulated tributary inflows**
- **Available supply is allocated proportionately**
- **When NRP ends Prorationing begins**



Yakima Basin

Storage Control Date

Two conditions to start Storage Control Period

- **Condition 1: Minimum flow at the Yakima River near Parker is sustained by reservoir releases**
- **Condition 2: Yakima reservoirs' outflows are greater than inflows**

Note: these conditions could be met temporarily and might not set the SCD. An example is when snowmelt flows decline and then pick up again.



Hydrologic Summary

- Storage is 8th lowest in POR from 1971-2025, 581 KAF, 55% full, 73% avg.
- April precip, 51% avg.
- WYTD precip, 81% avg.
- Adopted Runoff forecasts are near 72% avg.
- TWSA is 1.828 MAF, 73% of normal
- Prorationing would be 51%
- Low refill probabilities but likely at BUM.
- BA Pulse Flows are in the Low Range



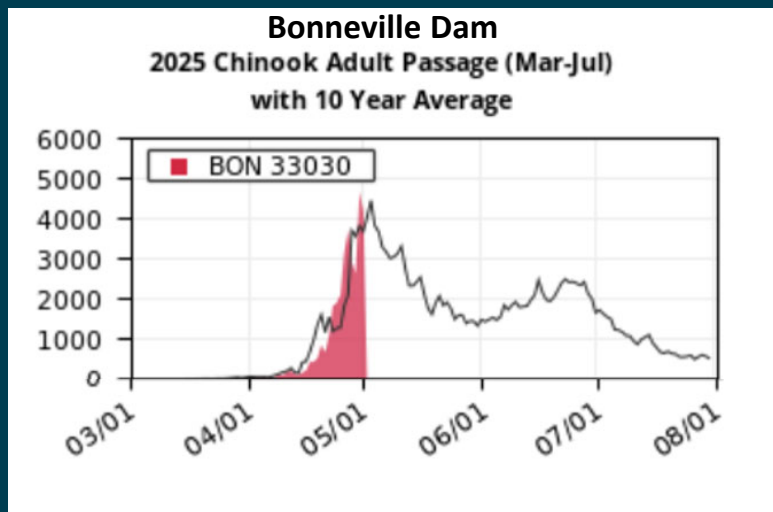
— BUREAU OF —
RECLAMATION

Fish Status

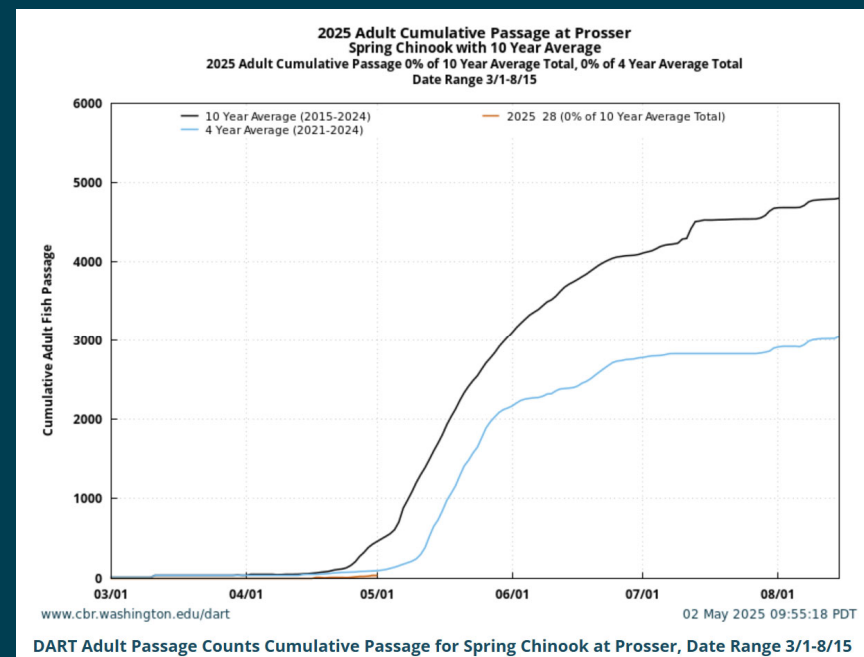
YFO Fish Activities May 2025

- Monitoring conditions and coordinating spring fish migration flow releases with SOAC and operations staff
- Cle Elum Dam sockeye smolt passage: estimated to have trapped and hauled approx. 36,000 smolts below dam since April 7, continuing through mid-May
- Updating Cle Elum Dam fish passage PIT Tag detection system, planning future fish passage studies and activities
- BPA Phase 2 Fish Screen O&M contract and budget due May 30





Spring Chinook count 33,030 adults as of 5/2, tracking 10-year average.



Few Spring Chinook have arrived yet at Prosser Dam. Through 4/30 count was 28 adults, with most fish arriving May through June.





— BUREAU OF —
RECLAMATION

Next meetings

Jun 5, @ 10:30 am

July 3, @ 10:30 am