

Water is Life

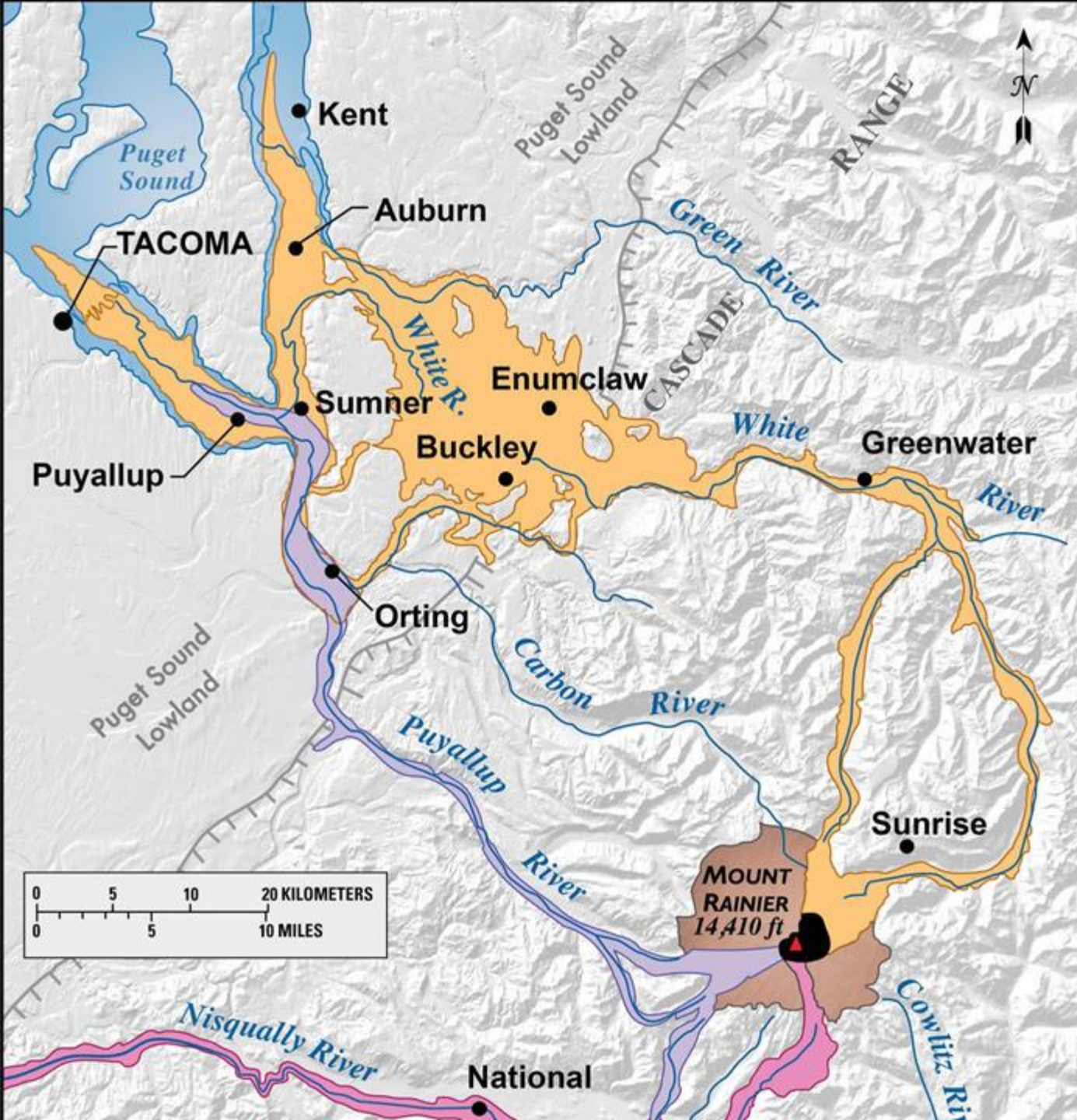
Water and soil on the Enumclaw Plateau

Michael Isensee, WSDA Dairy Nutrient Management Program

March 15, 2021



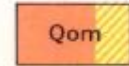
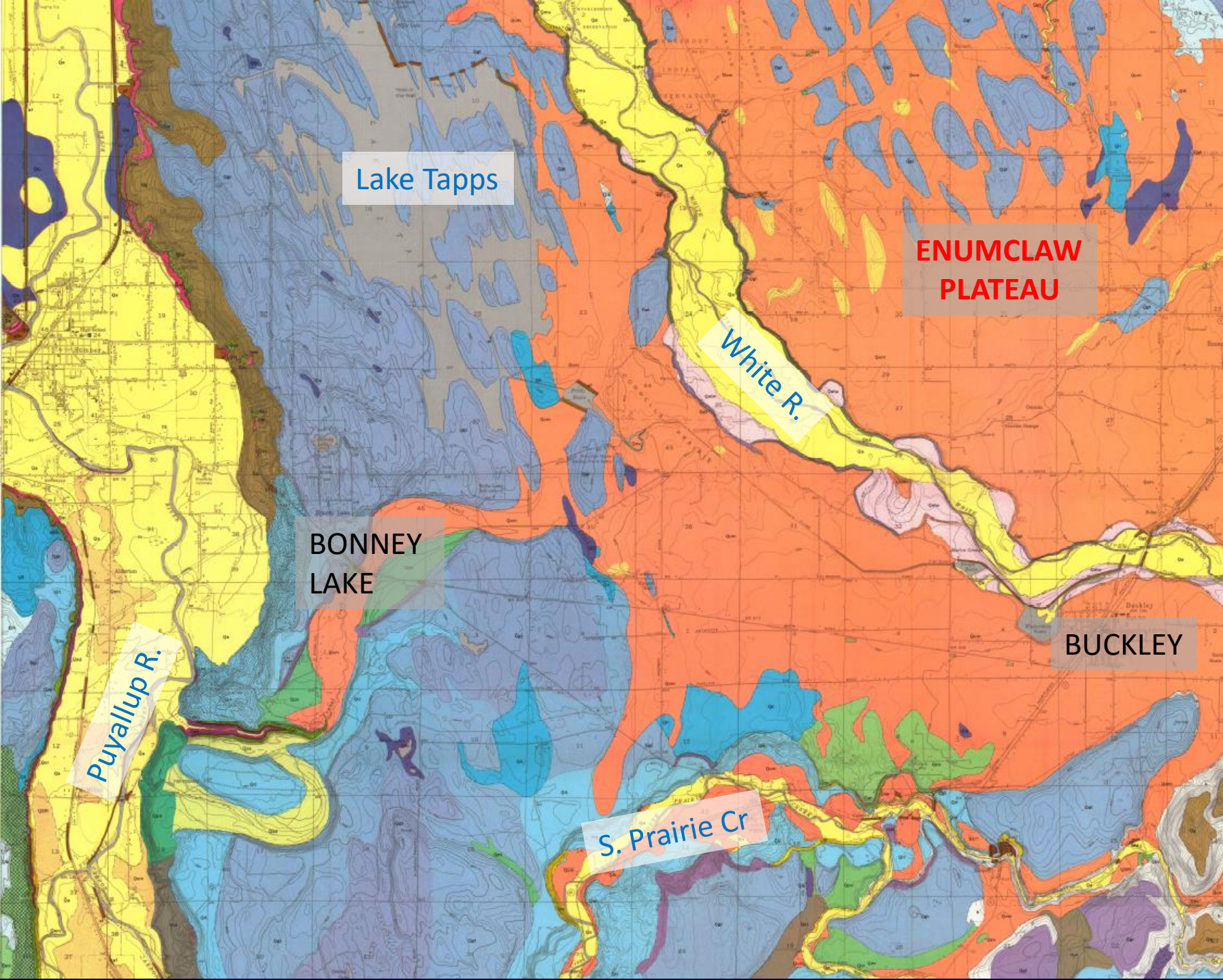
Origins of the Plateau



Source: <https://www.usgs.gov/media/images/lahar-pathways-events-heading-mount-rainier-map-showing-t>

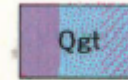


Why a plateau?

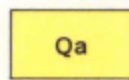


Osceola mudflow

Unsorted mixture of andesitic rock fragments in clayey sand matrix, derived chiefly from Mount Rainier. Thickness ranges from 0 to known maximum of 75 feet. Line pattern shows areas where deposit is inferred to be less than 10 feet thick on Vashon drift



Glacial drift, chiefly till



Alluvium

Source: <https://pubs.usgs.gov/pp/0388a/plate-1.pdf>







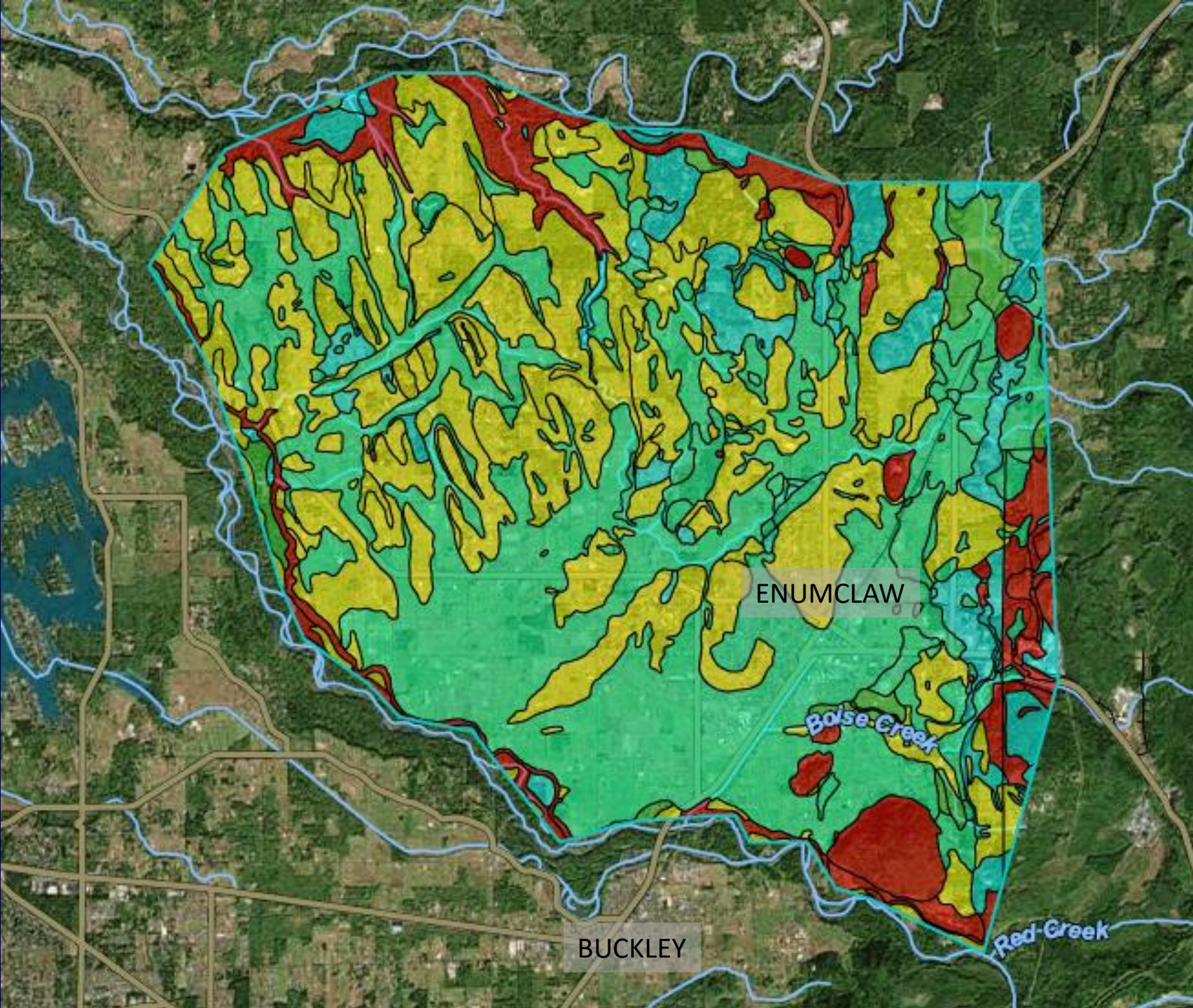
White River



Enumclaw soils: Farmland Classification

Buckley: teal – prime
farmland IF DRAINED

Aldergrove: yellow – Prime
farmland IF IRRIGATED



Enumclaw soils: Buckley





Enumclaw
soils:
Buckley

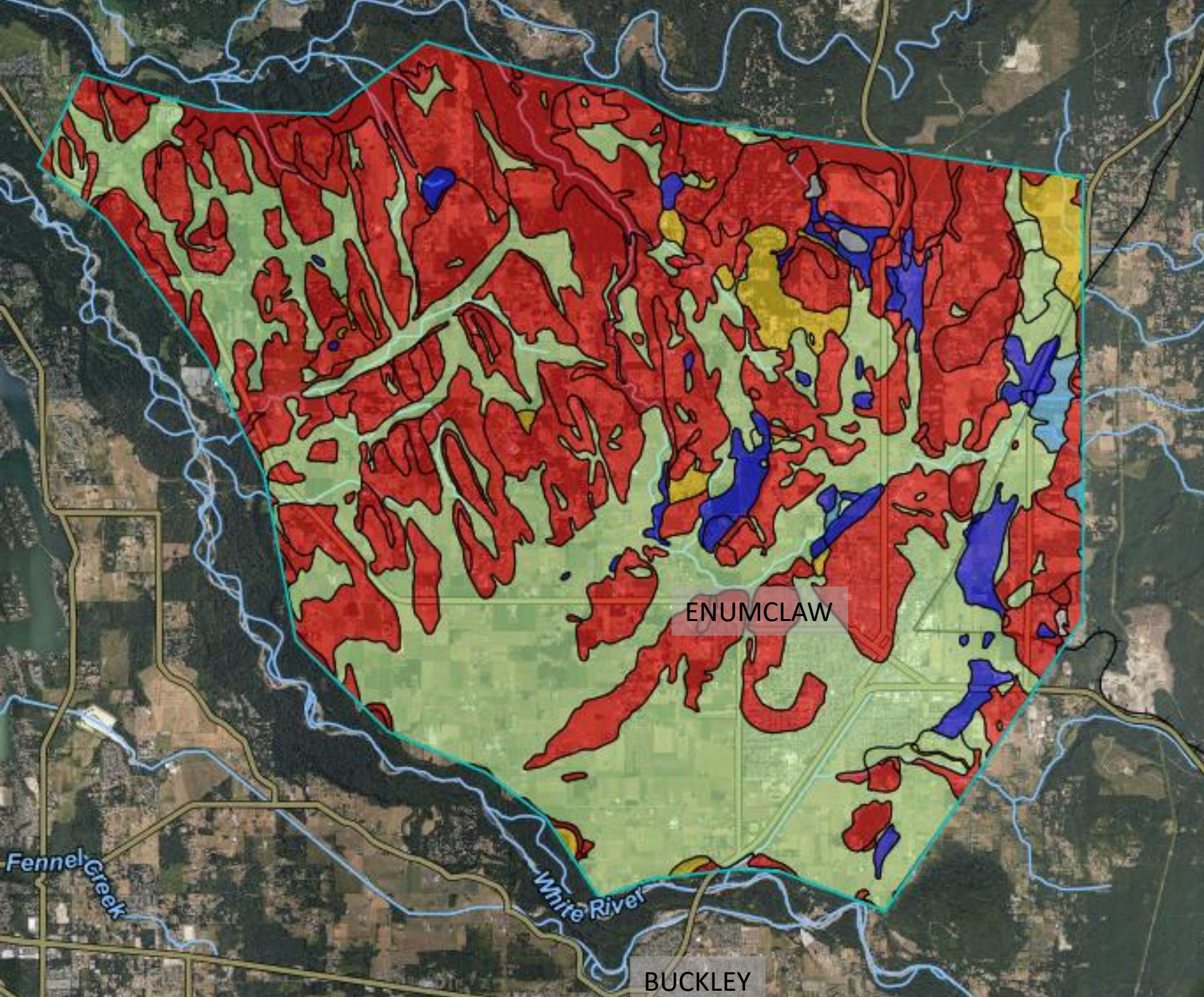




Enumclaw
soils:
Aldergrove



Enumclaw soils: Available Water Capacity



Soil Rating Points

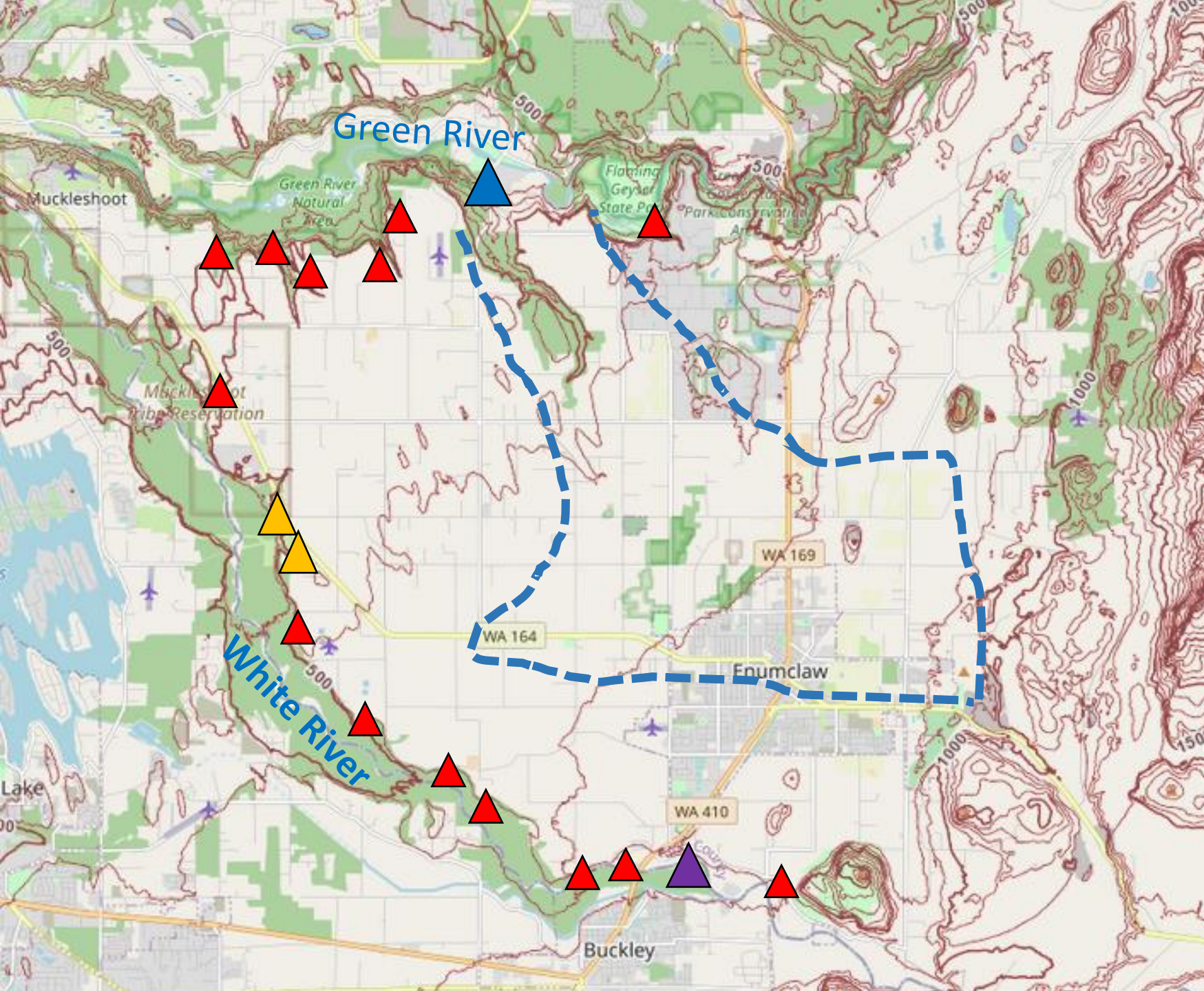
- ≤ 0.11
- > 0.11 and ≤ 0.14
- > 0.14 and ≤ 0.20
- > 0.20 and ≤ 0.27
- > 0.27 and ≤ 0.44

Buckley: light green
Aldergrove: red



Where does the water go?

Purple = Boise Creek
Orange = Pussyfoot and Second Creeks
Blue – Newaukum Creek
Red = everything else



Newaukum Creek



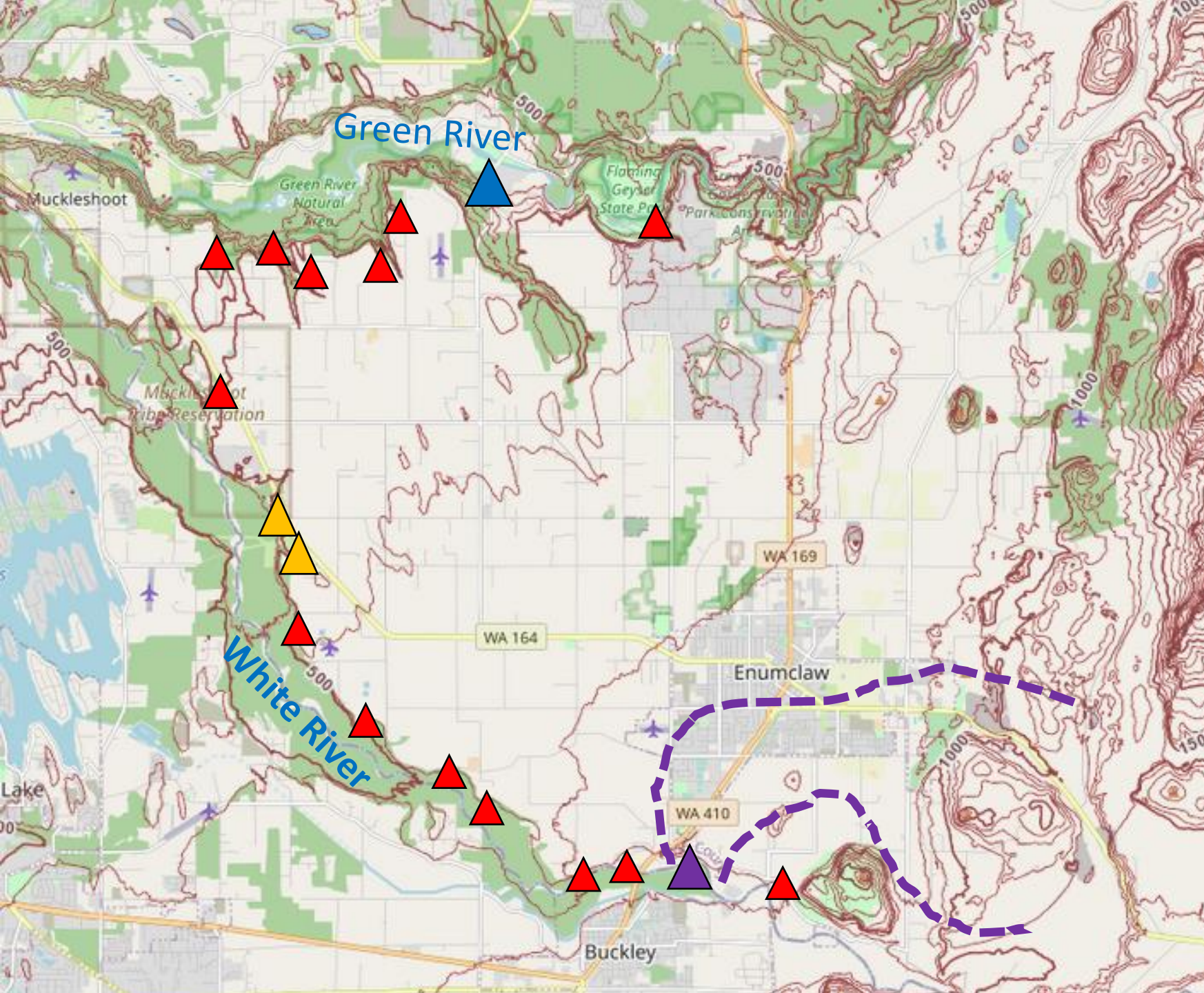
Where does the water go?

Purple = Boise Creek

Orange = Pussyfoot and
Second Creeks

Blue – Newaukum Creek

Red = everything else

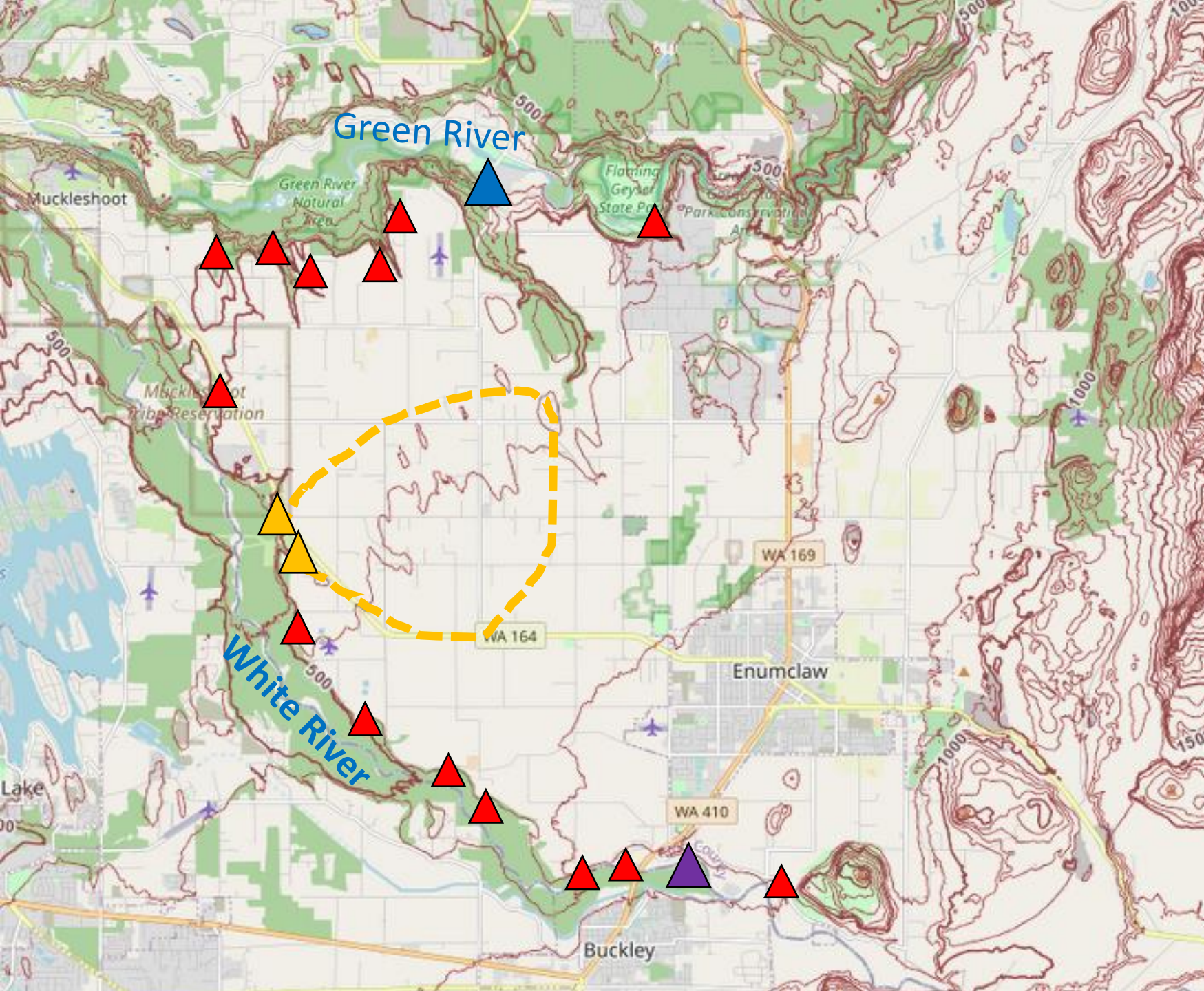


Boise Creek

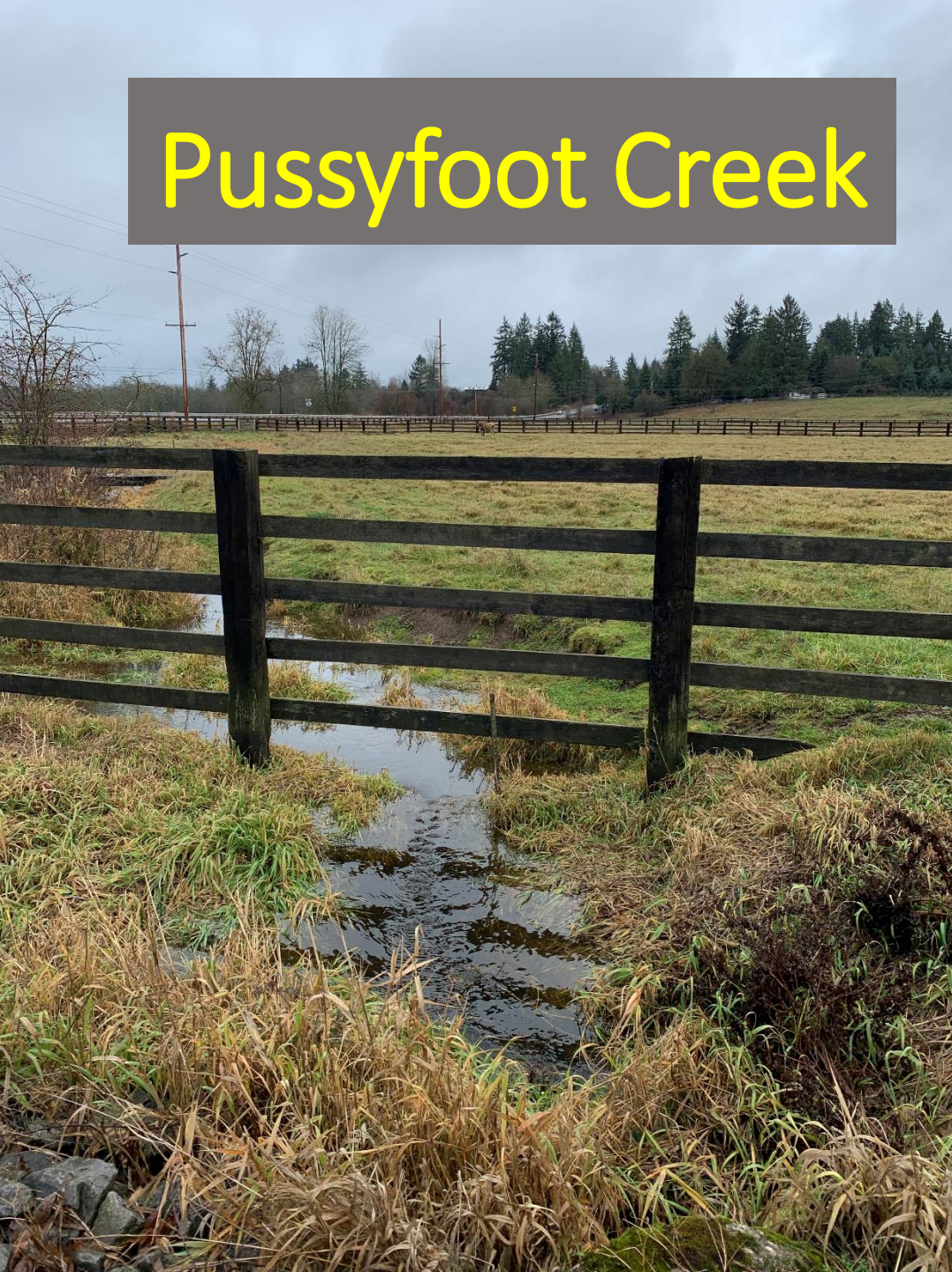


Where does the water go?

Purple = Boise Creek
Orange = Pussyfoot and Second Creeks
Blue – Newaukum Creek
Red = everything else



Pussyfoot Creek



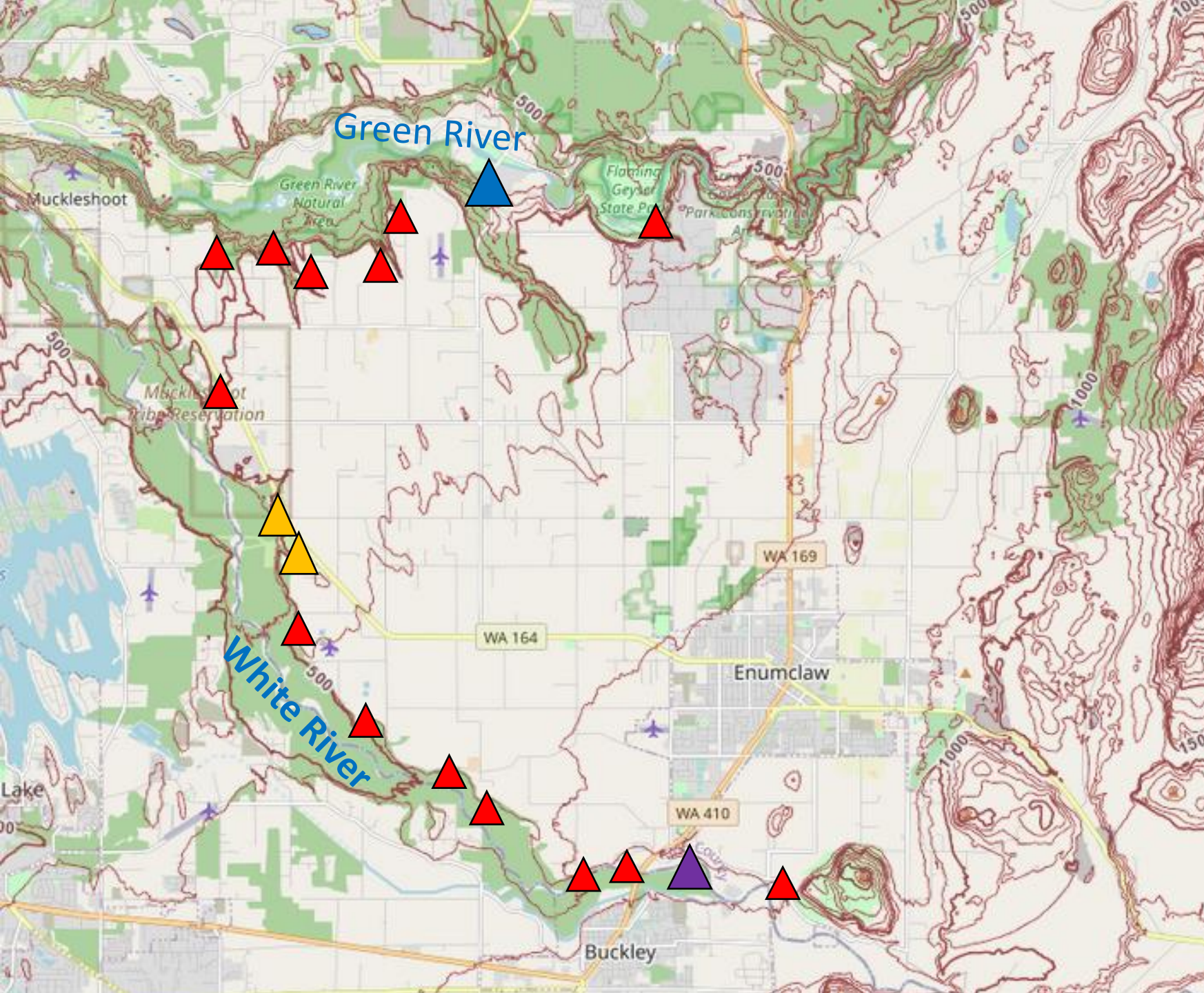
Where does the water go?

Purple = Boise Creek

Orange = Pussyfoot and
Second Creeks

Blue – Newaukum Creek

Red = everything else







Where does
the water go?



Michael Isensee,
WSDA Dairy Nutrient Management Program



misensee@agr.wa.gov

360-961-7412