



WRIA 7 Project Inventory

Bridget August/GeoEngineers, Inc.

Senior Hydrogeologist

November 14, 2019

Project Inventory Overview

Inventory Organization

- Unique project identifier, project name, source of the project, location, description, and other info.
- Projects sorted into categories in NEB Guidance
 - Water right acquisition offset projects
 - Non-acquisition water offset projects
 - Habitat and other related projects
- Fatal flaw screening & all additional filtering in inventory
- Can search by a project elements or screening topic
- On BOX; will be updated frequently



Project Sources

WRIA 7 Climate Change Impacts to Salmon Issue Paper

Final Ecosystem Recovery Plan

Snohomish Basin Protection Plan

Snoqualmie 2015, Building from Salmon Recovery and Watershed Health

Lower Skykomish River Reach-scale Plan

Snohomish Basin Near-Term Actions (NTAs) for the 2018-2022 Action Agenda

Death by a Thousand Cuts: An examination of regulation enforcement in the Stillaguamish Watershed and the effects on ESA-listed Chinook Salmon

Snohomish River and Estuary Reach-scale Plan

Final 2019-2021 Floodplains by Design Proposed Funding List

Habitat Work Schedule - Tracking Salmon Recovery Throughout Washington State

Snoqualmie 10 Year Capital Project List 2015-2025

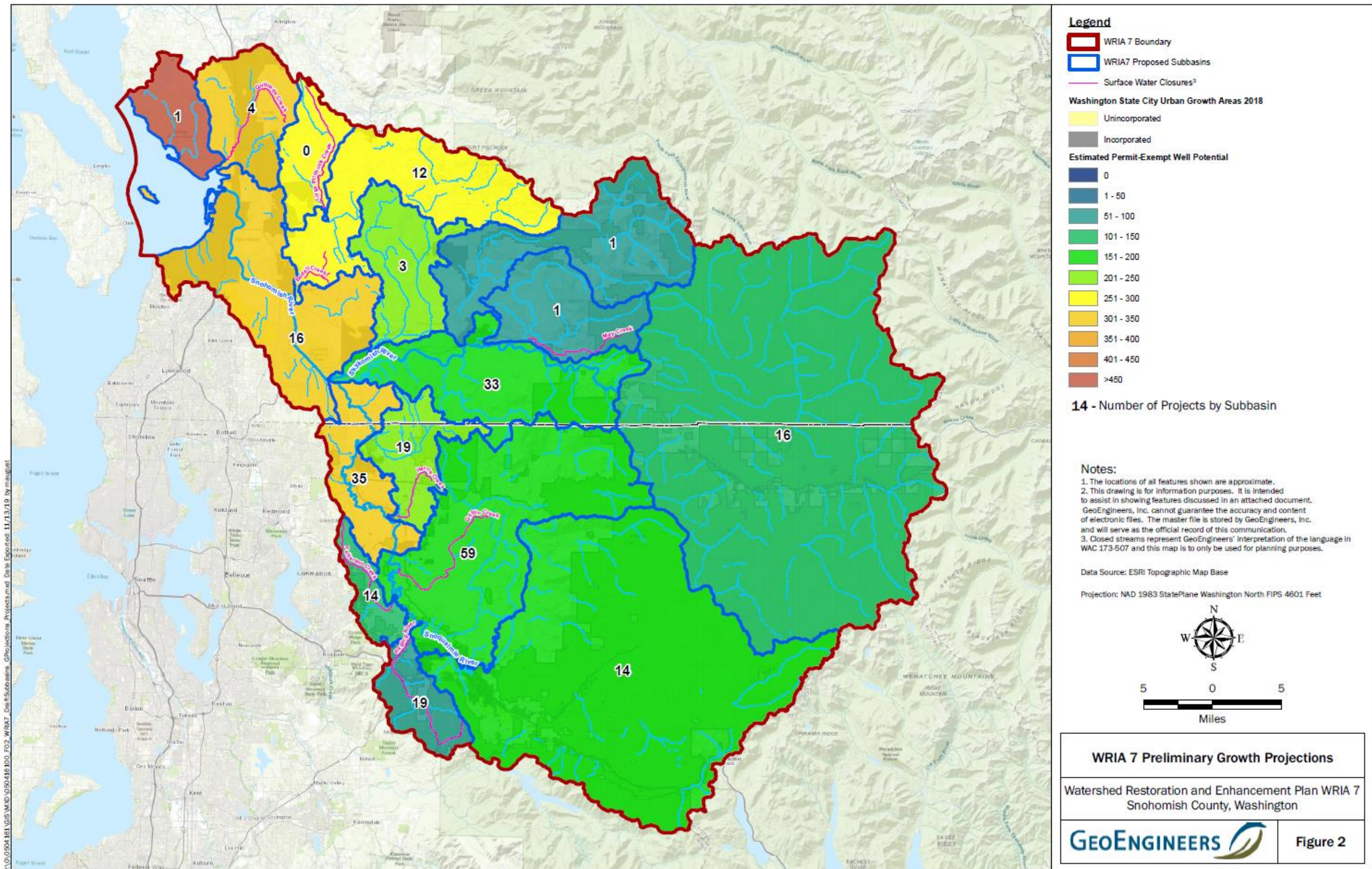
2018 AARecommendedNTAs_LocalArea for Snohomish-Stillaguamish

2019 Snohomish 4 -Year Work Plan

Email communication



Subbasin Project Distribution



Subbasin Project Distribution

1 – Tulalip: 1 project	9 – Skykomish Mainstem: 33 projects
2 – Quilceda-Allen: 4 projects	10 – Upper Skykomish: 16 projects
3 - Estuary/Snohomish Mainstem: 16 projects	11 – Cherry-Harris: 19 projects
4 – Little Pilchuck: 0 projects	12 – Snoqualmie North: 35 projects
5 – Pilchuck: 12 projects	13 – Snoqualmie South: 59 projects
6 – Woods: 3 projects	14 – Patterson: 14 projects
7 – Sultan: 1 project	15 – Raging: 19 projects
8 – Lower Mid-Skykomish: 1 project	16 – Upper Snoqualmie: 14 projects
Total: 247 projects	
Programmatic/Multiple WRIAs: 117 projects	



Fatal Flaw Screening

Five Criteria

1. No Benefits to Streamflow or Habitat
 2. Already Required by Regulatory Obligation
 3. Inconsistent with Existing Rule/Law or Streamflow Restoration Policy
 4. Substantive Conflict with Another Watershed Plan
 5. Implemented Prior to January 2018
- A “yes” to any of the five criteria triggers a fatal flaw designation.



Inconsistent with Existing Rule/Law or Streamflow Restoration Policy

Title	Regulation Designation	Notes
Water Code	Chapter 90.03 RCW	
Regulation of Public Groundwaters	Chapter 90.44 RCW	
Reclaimed Water Use	Chapter 90.46 RCW	
Shoreline Management Act	Chapter 90.58 RCW	
Streamflow Restoration	Chapter 90.94 RCW	
Surface Water Quality Standards	Chapter 173-201A WAC	
Water Quality Standards	Chapter 173-200-040 WAC	
Underground Injection Control Program	Chapter 173-218 WAC	
Hydraulic Code Rules	Chapter 220-660 WAC	
Critical Areas Regulations - Pertinent Cities and Counties		Snohomish County, City of Everett, City of Marysville, City of Lake Stevens, City of Snohomish, City of Monroe
Stormwater Management Manual for Western Washington		

Substantive Conflict with Another Watershed Plan

Plan Title	Date
WRIA 7 Snohomish River Basin Salmon Conservation Plan	2005
Final Ecosystem Recovery Plan	May 2017
Snoqualmie River TMDL Implementation Plan	June 2011
Snohomish Basin Protection Plan	December 2015
Lower Skykomish River Reach-Scale Plan	2018
Snohomish River and Estuary Reach-Scale Plan	2018



Fatal Flaw Screening Results

Criterion	Number of Projects
No Benefits to Streamflow or Habitat	1
Already Required by Regulatory Obligation	7
Inconsistent with Existing Rule/Law and/or Streamflow Restoration Policy	0
Substantive Conflict with Another Watershed Plan	8
Implemented Prior to 2018	3
Total Failing	18
Total Passing	344



Additional Filtering

Criterion	Number of Projects
Estuary or Shoreline	2
Monitoring	8
Strategic/Investigative/Programmatic ¹	117
Habitat Project with Water Storage Potential ²	100
Duplicates	21 Pairs

Notes:

¹ Projects with no site-specific action proposed.

² Projects that have one of these elements:

- Wood placement
- Floodplain restoration/reconnection
- Stream restoration/dechannelization
- Levee setback
- Levee removal
- Dike removal
- Beaver introduction and analog
- Armoring removal



Thank you for your time!

Any questions?

