

Legend

WRIA 7 Boundary

Surface Water Closures³

WRIA7 Proposed Subbasins

Snoqualmie Tribe Reservation

Tulalip Tribes Reservation

Cherry-Harris

Estuary/Snohomish Mainstem

Little Pilchuck

Lower Mid-Skykomish

Patterson

Pilchuck

Quilceda-AlLEN

Raging

Skykomish Mainstem

Snoqualmie North

Snoqualmie South

Sultan

Tulalip

Upper Skykomish

Upper Snoqualmie

Woods

Notes:

1. The locations of all features shown are approximate.

2. This drawing is for information purposes. It is intended to assist in showing features discussed in an attached document. GeoEngineers, Inc. cannot guarantee the accuracy and content of electronic files. The master file is stored by GeoEngineers, Inc. and will serve as the official record of this communication.

3. Closed streams represent GeoEngineers' interpretation of the language in WAC 173-507 and this map is to only be used for planning purposes.

Data Source: ESRI Topographic Map Base

Projection: NAD 1983 StatePlane Washington North FIPS 4601 Feet

N

W

E

S

5

0

5

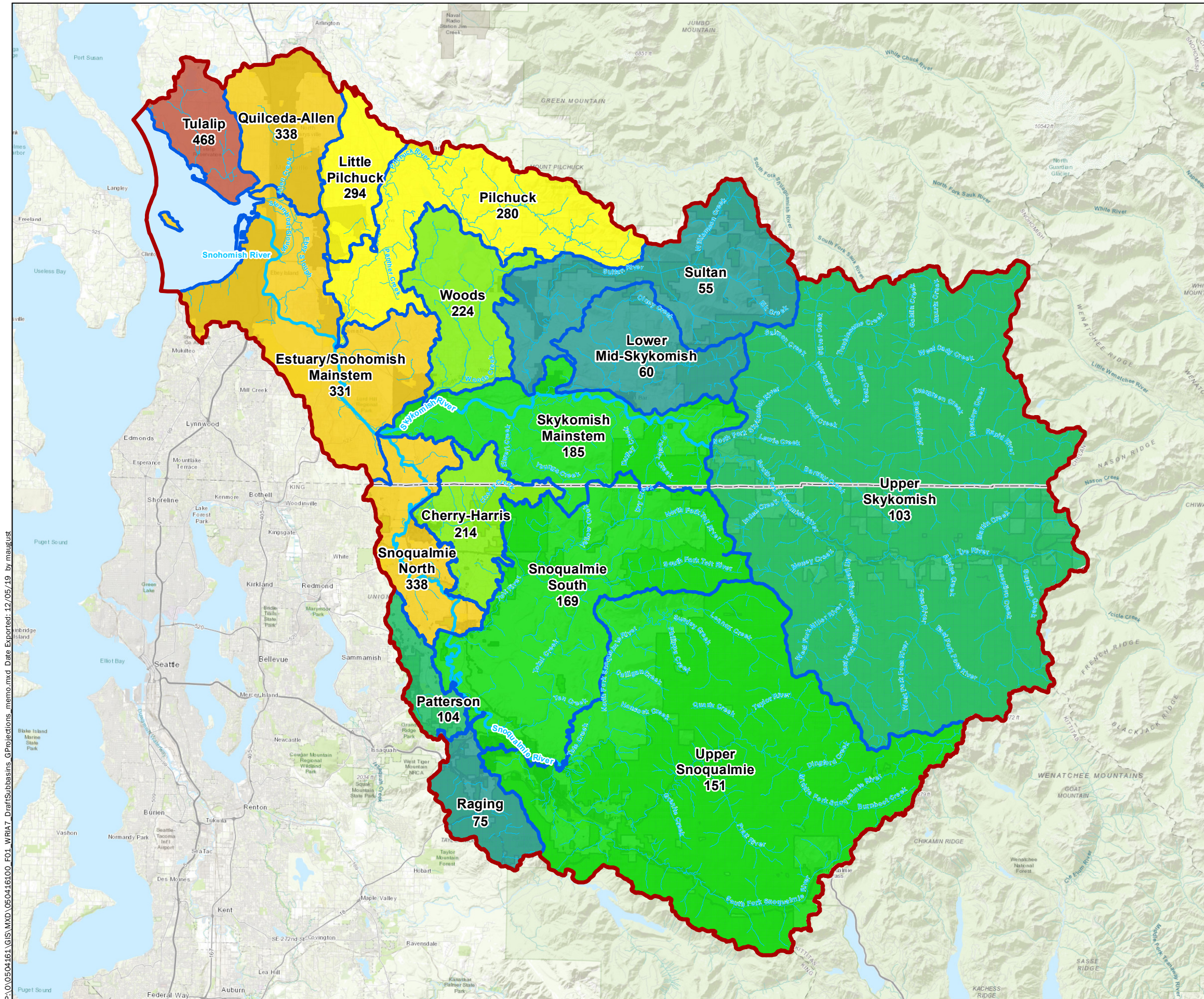
Miles

WRIA 7 - Snohomish Subbasin Delineation

Watershed Restoration and Enhancement Plan WRIA 7
Snohomish County, Washington

GEOENGINEERS

Figure 1



Legend

- WRIA 7 Boundary
- WRIA7 Proposed Subbasins

Washington State City Urban Growth Areas 2018

- Unincorporated
- Incorporated

Estimated Permit-Exempt Well Potential

- 0
- 1 - 50
- 51 - 100
- 101 - 150
- 151 - 200
- 201 - 250
- 251 - 300
- 301 - 350
- 351 - 400
- 401 - 450
- >450

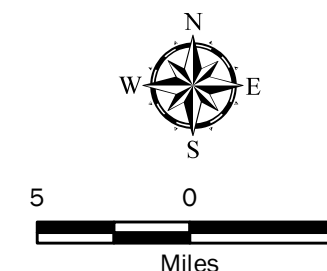
Projected WRIA 7 PE Well Total = 3,389

Notes:

1. The locations of all features shown are approximate.
2. This drawing is for information purposes. It is intended to assist in showing features discussed in an attached document. GeoEngineers, Inc. cannot guarantee the accuracy and content of electronic files. The master file is stored by GeoEngineers, Inc. and will serve as the official record of this communication.

Data Source: ESRI Topographic Map Base

Projection: NAD 1983 StatePlane Washington North FIPS 4601 Feet

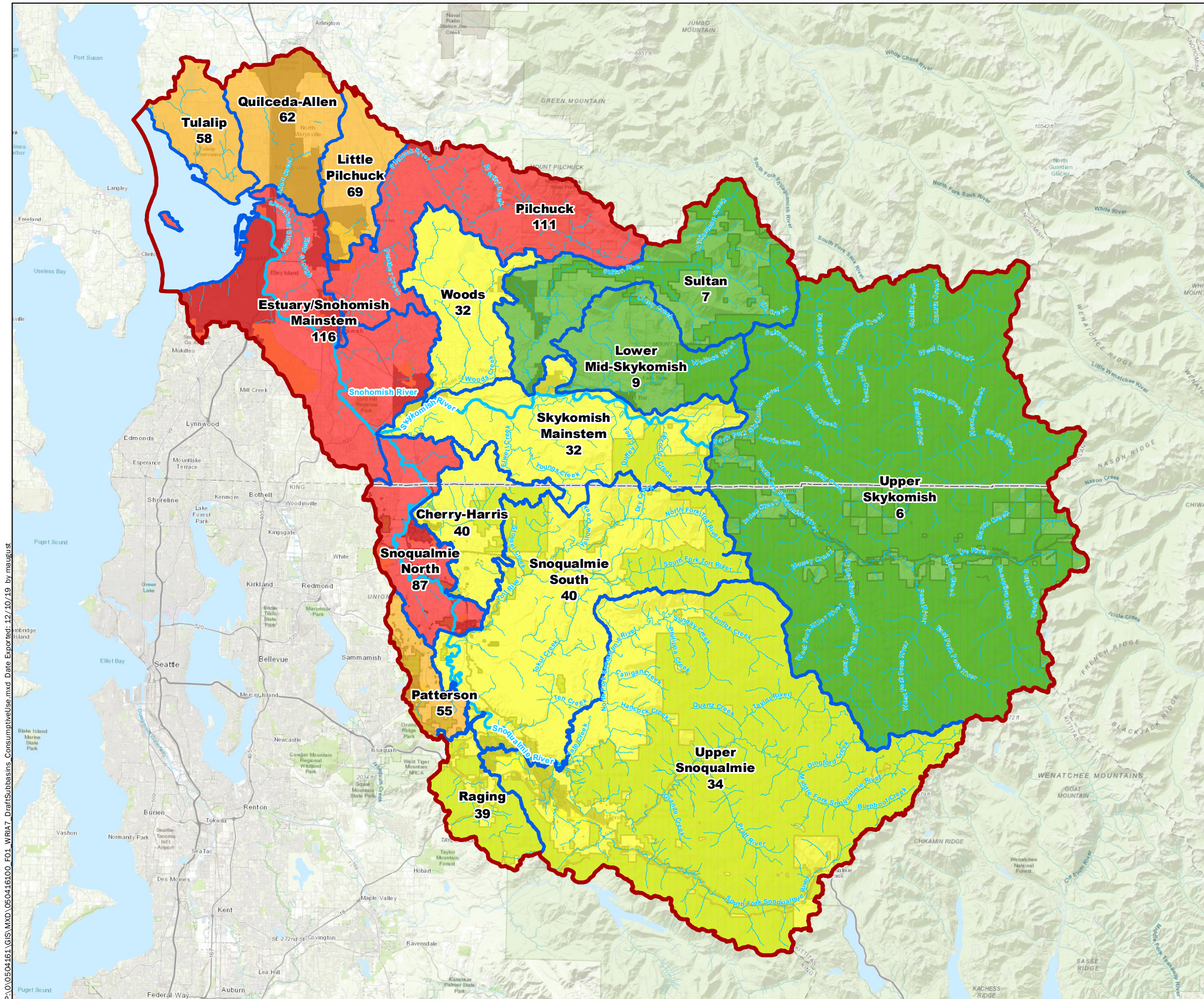


WRIA 7 Distribution of Projected Permit-Exempt Wells 2018-2038

Watershed Restoration and Enhancement Plan
Snohomish and King Counties, Washington



Figure 1



Legend

- WRIA 7 Boundary
- WRIA7 Proposed Subbasins

Washington State City Urban Growth Areas 2018

- Unincorporated
- Incorporated

Consumptive Water Use Estimate (acre-feet/year)

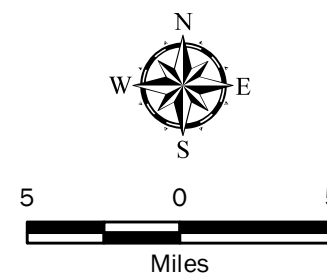
- 6 - 9
- 9 - 54
- 54 - 70
- 70 - 116

Notes:

1. The locations of all features shown are approximate.
2. This drawing is for information purposes. It is intended to assist in showing features discussed in an attached document. GeoEngineers, Inc. cannot guarantee the accuracy and content of electronic files. The master file is stored by GeoEngineers, Inc. and will serve as the official record of this communication.

Data Source: ESRI Topographic Map Base

Projection: NAD 1983 StatePlane Washington North FIPS 4601 Feet

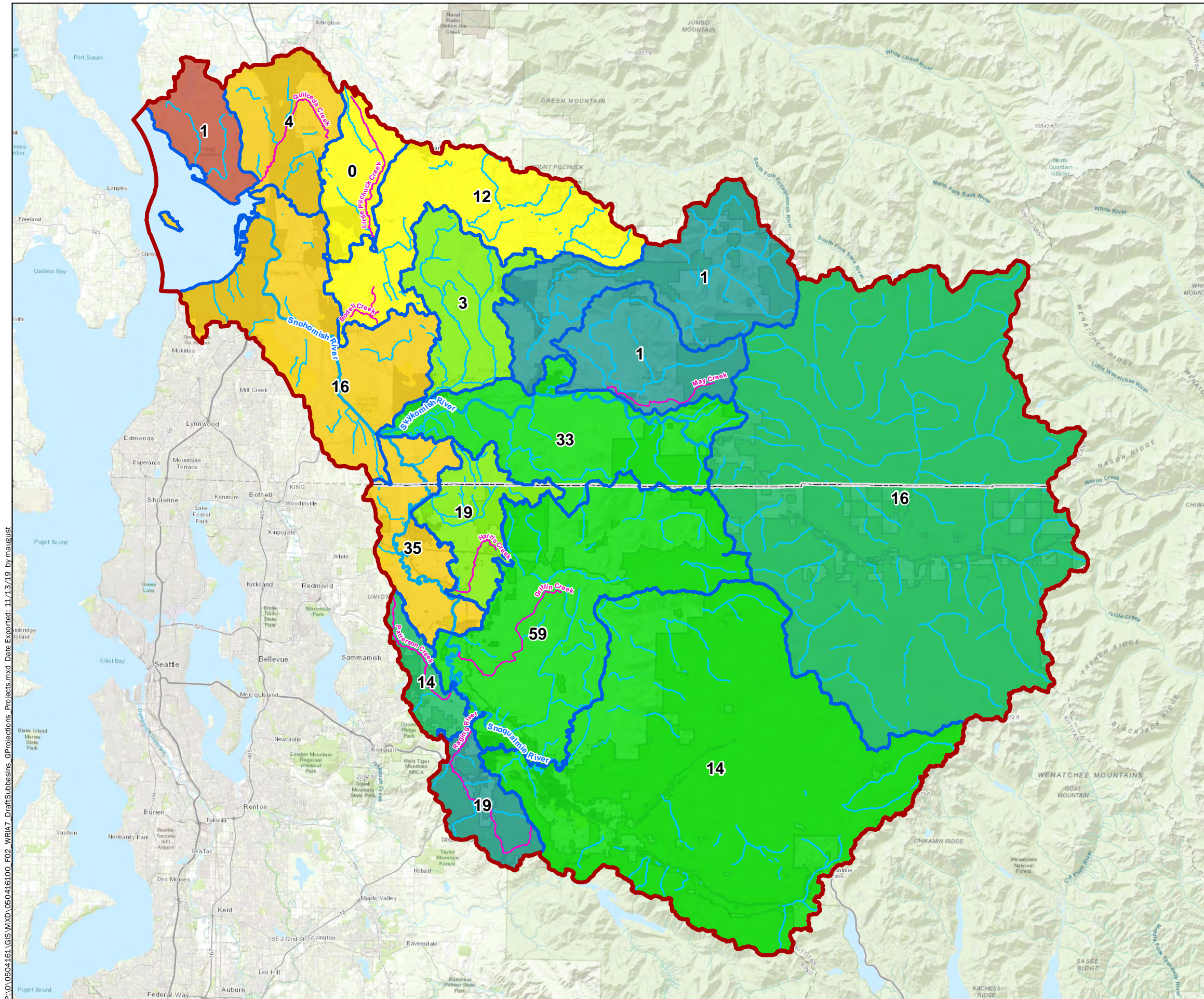


Preliminary Consumptive Use Estimates by Subbasin

Watershed Restoration and Enhancement Plan
Snohomish and King Counties, Washington



Figure 1



Legend

- WRIA 7 Boundary
- WRIA7 Proposed Subbasins
- Surface Water Closures³

Washington State City Urban Growth Areas 2018

- Unincorporated
- Incorporated

Estimated Permit-Exempt Well Potential

- 0
- 1 - 50
- 51 - 100
- 101 - 150
- 151 - 200
- 201 - 250
- 251 - 300
- 301 - 350
- 351 - 400
- 401 - 450
- >450

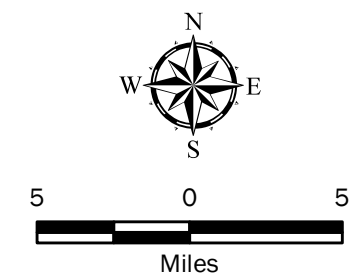
14 - Number of Projects by Subbasin

Notes:

1. The locations of all features shown are approximate.
2. This drawing is for information purposes. It is intended to assist in showing features discussed in an attached document. GeoEngineers, Inc. cannot guarantee the accuracy and content of electronic files. The master file is stored by GeoEngineers, Inc. and will serve as the official record of this communication.
3. Closed streams represent GeoEngineers' interpretation of the language in WAC 173-507 and this map is to only be used for planning purposes.

Data Source: ESRI Topographic Map Base

Projection: NAD 1983 StatePlane Washington North FIPS 4601 Feet



WRIA 7 Growth Projections and Identified Projects by Subbasin as of November 14, 2019

Watershed Restoration and Enhancement Plan WRIA 7
Snohomish County, Washington



Figure 2