

To: Cedar-Sammamish (WRIA 8) Watershed Restoration and Enhancement Committee

From: Stephanie Potts, Committee Chair

Date: August 27, 2019

Re: Proposal for WRIA 8 Subbasin Delineations

Background

The Cedar-Sammamish Watershed Restoration and Enhancement Committee (WRIA 8 WREC) is tasked with preparing a Watershed Restoration and Enhancement Plan in order to implement the Streamflow Restoration Law (RCW 90.94). RCW 90.94.030(3)(b) requires Watershed Restoration and Enhancement Plans to include actions to offset new consumptive use impacts associated with permit-exempt domestic water use.

Dividing the Cedar-Sammamish Water Resource Inventory Area (WRIA 8) into subbasins is an essential step in developing a plan that complies with the law. RCW 90.94.030(3)(b) states “The highest priority recommendations must include replacing the quantity of consumptive water use during the same time as the impact and in the same basin or tributary.” The *Final Guidance for Determining Net Ecological Benefit (GUID-2094)*¹ states in *Section 3.2.3.2 Delineate Subbasins*: “Planning groups must divide the WRIA into suitably-sized subbasins to allow meaningful analysis of the relationship between new consumptive use and offsets. Subbasins will help the planning groups understand and describe location and timing of projected new consumptive water use, location and timing of impacts to instream resources, and the necessary scope, scale, and anticipated benefits of projects. Planning at the subbasin scale will also allow planning groups to consider specific reaches in terms of documented presence (e.g., spawning and rearing) of salmonid species listed under the federal Endangered Species Act.”

Subbasin Proposal

The WRIA 8 Watershed Restoration and Enhancement Committee Chair will seek a vote on the subbasin proposal from the Committee at the September 26, 2019 meeting. The Committee discussed the most recent subbasin proposal at the August 22, 2019 meeting and there was support for the proposal from all members present. In addition, the Committee’s Technical Workgroup supports the proposal and recommends approval by the Committee. As of August 27, 2019, no dissenting opinions to the proposal have been shared with the Chair by either members of the Technical Workgroup or the Committee.

The WRIA 8 WREC Technical Workgroup supports the subbasin proposal, as shown in *Figure 1 – WRIA 8 Proposed Subbasins*², because:

- 1) The proposal uses hydrologic stream basin boundaries as a basis for creating subbasins. The King County portion of the watershed uses King County drainage basins and the Snohomish County portion of the watershed uses Hydrologic Unit Codes (HUC-12).
- 2) The proposal combines hydrologic stream basins in areas of the watershed that are urbanized and have existing water service, and are therefore unlikely to have new homes using permit-exempt domestic wells.

¹ The *Final Guidance for Determining Net Ecological Benefit* is available for download at:

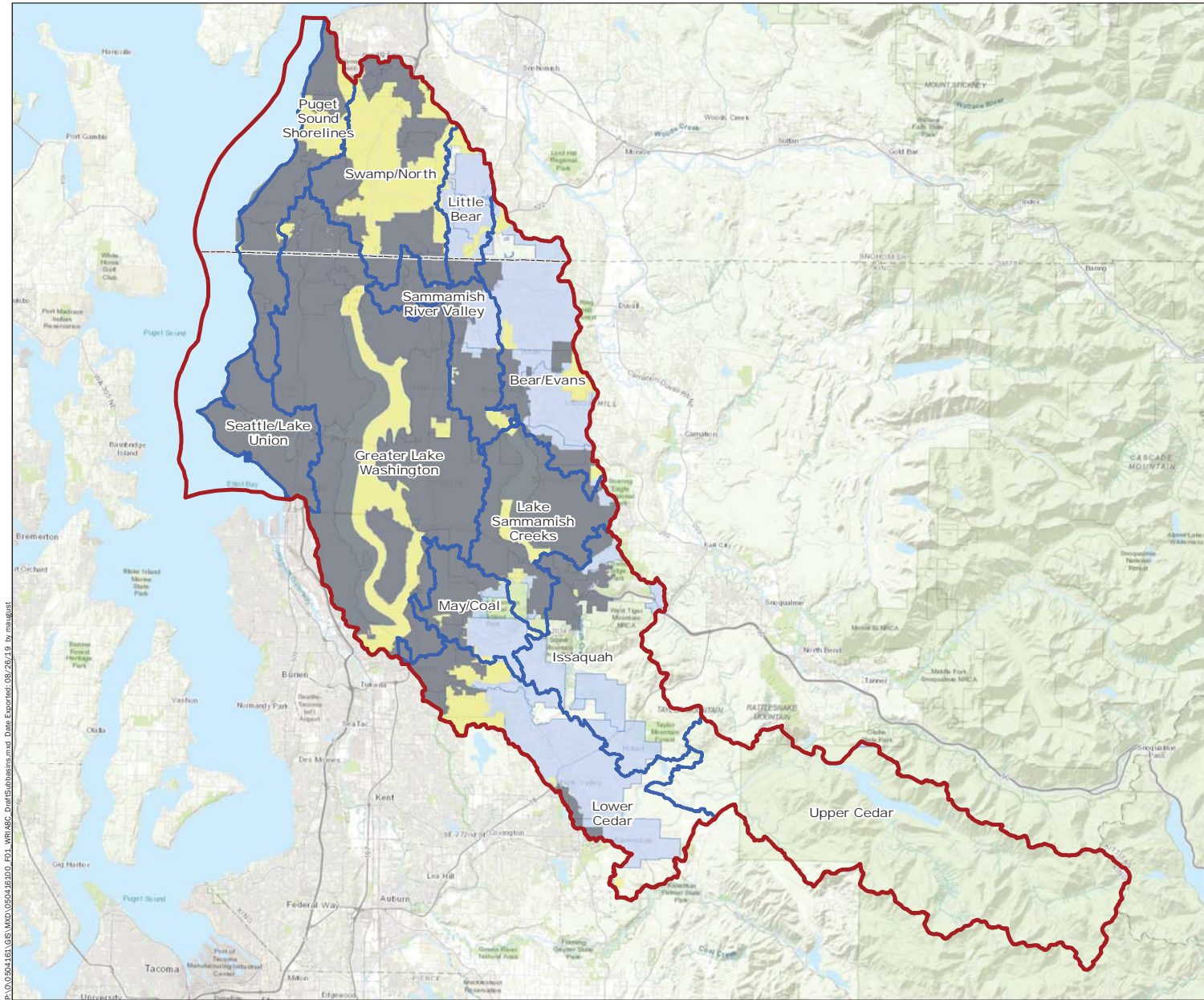
<https://fortress.wa.gov/ecy/publications/SummaryPages/1911079.html>

² The subbasin proposal is also on the [Web Map](#) under: “Draft Subbasins” > “WRIA 8 Draft Subbasin C”

- 3) The proposal delineates subbasins at a finer scale in areas of the watershed expected to have the most homes using permit-exempt domestic wells.

The workgroup and Committee acknowledge that we are using the term subbasin as defined in the *Final Guidance for Determining Net Ecological Benefit* and not based on the scientific definition. The *Final Guidance for Determining Net Ecological Benefit* defines subbasins as: “A geographic subarea within a WRIA, equivalent to the words “same basin or tributary” as used in RCW 90.94.020(4)(b) and RCW 90.94.030 (3)(b). In some instances, subbasins may not correspond with hydrologic or geologic basin delineations (e.g. watershed divides).”

The Committee can decide to revise the subbasin delineations before approval of the final Watershed Restoration and Enhancement Plan. Committee members can make a request to discuss revised subbasin delineations at future Committee meetings or technical workgroup meetings.



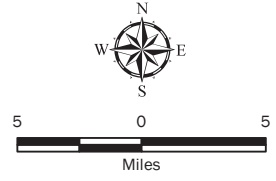
Legend

- WRIA 8 Boundary
 - WRIA 8 Proposed Subbasins
 - WA DOH Group A Service Areas
- Washington State City Urban Growth Areas 2018**
- Unincorporated
 - Incorporated

Notes:

1. The locations of all features shown are approximate.
2. This drawing is for information purposes. It is intended to assist in showing features discussed in an attached document. GeoEngineers, Inc. cannot guarantee the accuracy and content of electronic files. The master file is stored by GeoEngineers, Inc. and will serve as the official record of this communication.

Data Source: ESRI Topographic Map Base
 Projection: NAD 1983 StatePlane Washington North FIPS 4601 Feet



WRIA 8 Proposed Subbasins	
Watershed Restoration and Enhancement Plan Snohomish County, Washington	
	Figure 1

P:\0104041601\GIS\WDR\020416100_FIG_1\WRIA8C_DraftSubbasins.mxd Date Exported: 08/26/19 by rnaugust