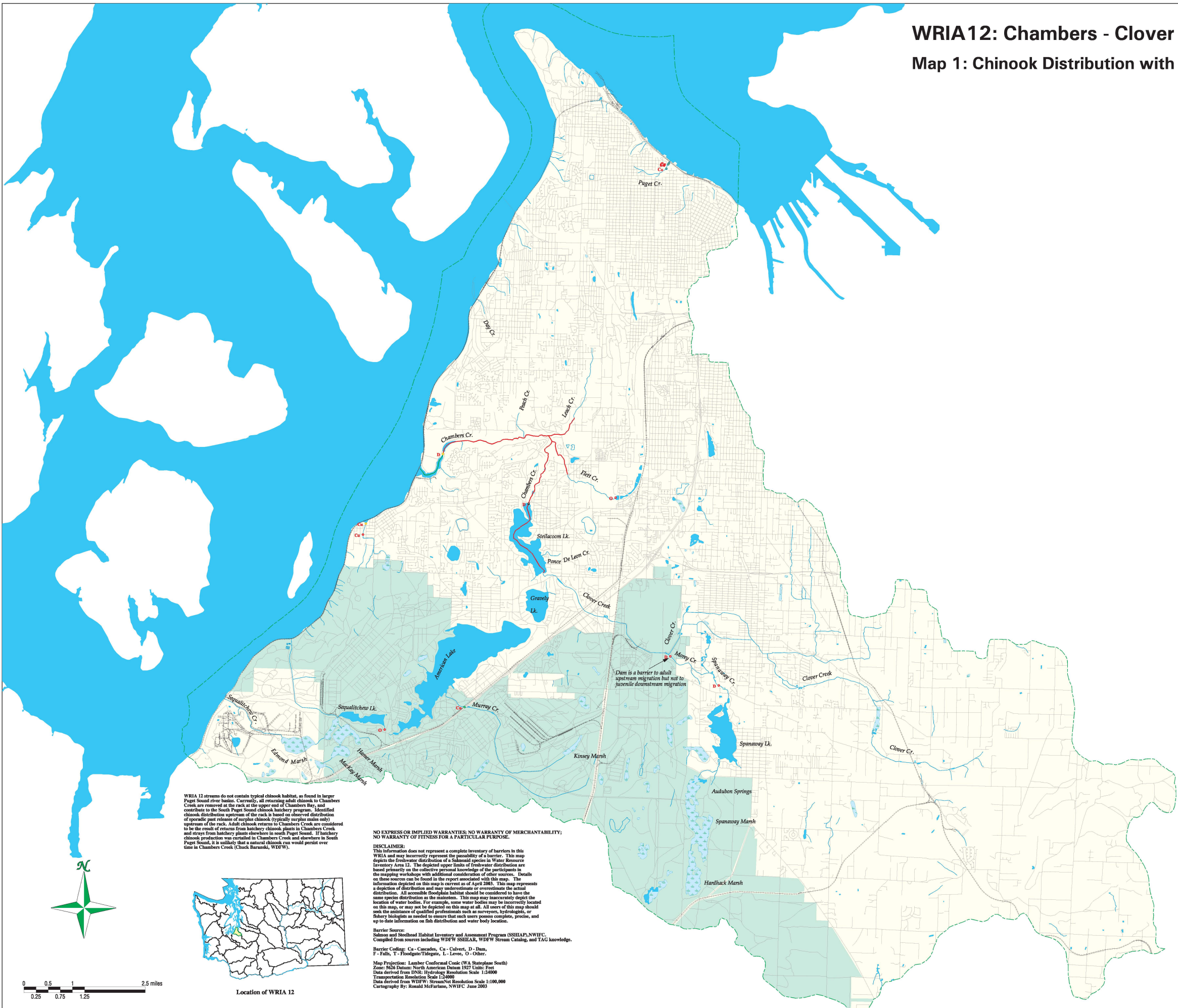


WRIA12: Chambers - Clover  
Map 1: Chinook Distribution with Barriers



WRIA 12 streams do not contain typical chinook habitat, as found in larger Puget Sound river basins. Currently, all returning adult chinook to Chambers Creek are removed at the rack at the upper end of Chambers Bay and contribute to the South Puget Sound chinook hatchery program. Identified chinook distribution upstream of the rack is based on observed distribution of sporadic past releases of surplus chinook (typically surplus males only) upstream of the rack. Adult chinook returns to Chambers Creek are considered to be the result of returns from hatchery chinook plants in Chambers Creek and strays from hatchery plants elsewhere in south Puget Sound. If hatchery chinook production was curtailed in Chambers Creek and elsewhere in South Puget Sound, it is unlikely that a natural chinook run would persist over time in Chambers Creek (Chuck Herzani, WDFW).

NO EXPRESS OR IMPLIED WARRANTIES; NO WARRANTY OF MERCHANTABILITY; NO WARRANTY OF FITNESS FOR A PARTICULAR PURPOSE.

**DISCLAIMER:**  
This information does not represent a complete inventory of barriers in this WRIA and may incorrectly represent the possibility of a barrier. This map depicts the freshwater distribution of a salmonid species in Water Resource Inventory Area 12. The depicted upper limits of freshwater distribution are based primarily on the collective personal knowledge of the participants in the mapping workshops with additional consideration of other sources. Details on these sources can be found in the report associated with this map. The information depicted on this map is current as of April 2003. This map represents a depiction of distribution and may underestimate or overestimate the actual distribution. All accessible floodplain habitat should be considered to have the same species distribution as the mainstem. This map may inaccurately depict the location of water bodies. For example, some water bodies may be incorrectly located on this map, or may not be depicted on this map at all. All users of this map should seek the assistance of qualified professionals such as surveyors, hydrologists, or fishery biologists as needed to ensure that such users possess complete, precise, and up to date information on fish distribution and water body location.

**Barrier Source:**  
Salmon and Steelhead Habitat Inventory and Assessment Program (SSHAP), NWIFC. Compiled from sources including WDFW SSHAP, WDFW Stream Catalog, and TAG knowledge.

**Barrier Coding:** Ca - Cascades, Cu - Culvert, D - Dam, F - Falls, T - Floodgate/Tidegate, L - Levee, O - Other.

**Map Projection:** Lambert Conformal Conic (WA Stateplane South)  
**Zone:** 5006 Datum: North American Datum 1983 Units: Feet  
**Data derived from:** DNR: Hydrology Resolution Scale 1:24000  
**Data derived from:** WDFW: StreamNet Resolution Scale 1:100,000  
**Cartography:** By: Ronald McFarlane, NWIFC June 2003

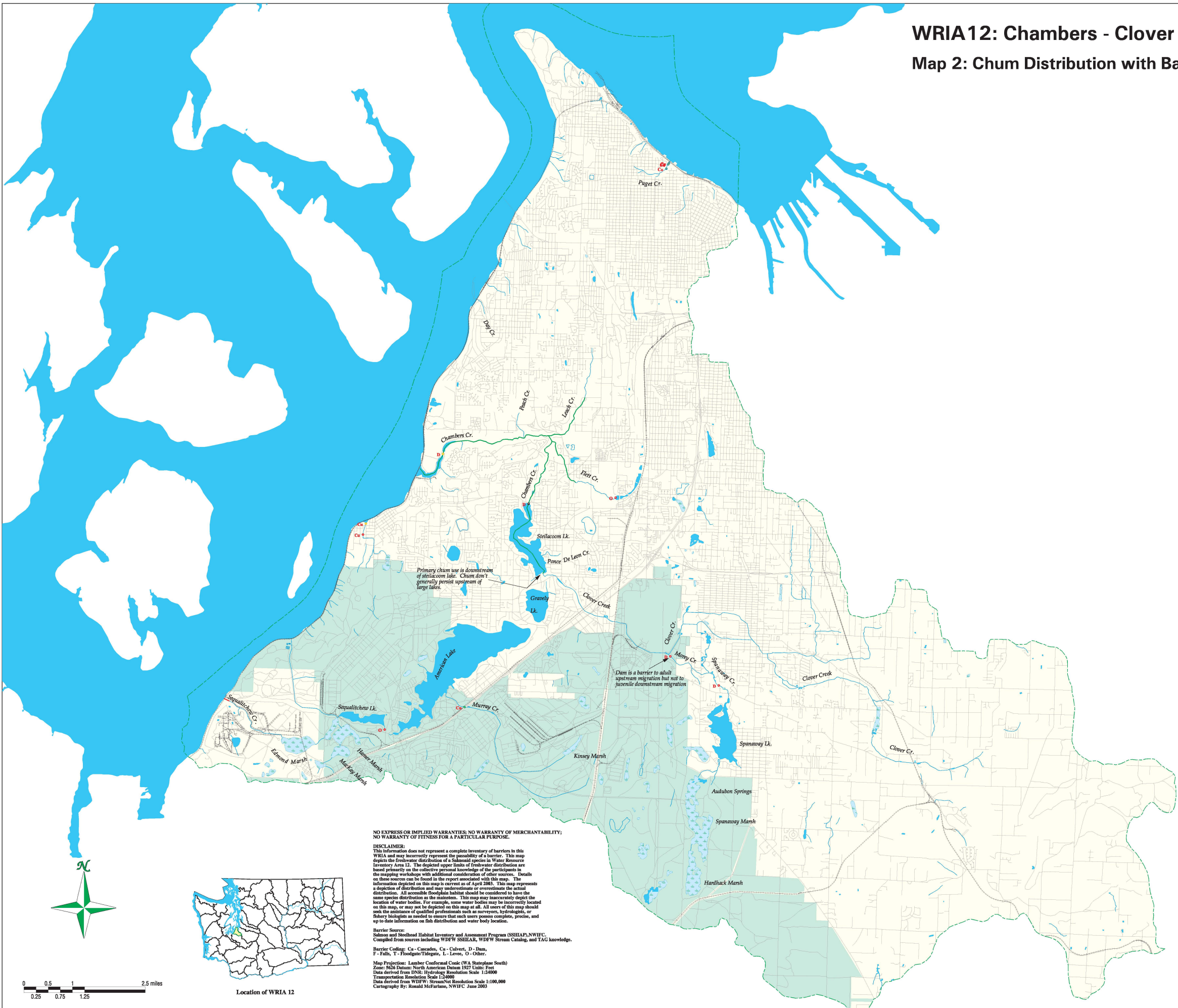
- Artificial Passage
- Not a Barrier
- Unknown Barrier
- Partial Barrier
- Complete Barrier
- Known Distribution
- Presumed Distribution
- Potential/Historic Distribution
- Streams
- Roads
- Railroad
- WRIA 12 Boundary
- Major Lakes and Waterways
- Federal Land Within WRIA 12
- WRIA 12 non-Federal Land
- Swamps/Wetlands

Washington State  
**Conservation**  
Commission

**Northwest Indian**  
Fisheries Commission



WRIA12: Chambers - Clover  
Map 2: Chum Distribution with Barriers



NO EXPRESS OR IMPLIED WARRANTIES; NO WARRANTY OF MERCHANTABILITY;  
NO WARRANTY OF FITNESS FOR A PARTICULAR PURPOSE.

**DISCLAIMER:**  
This information does not represent a complete inventory of barriers in this WRIA and may incorrectly represent the possibility of a barrier. This map depicts the freshwater distribution of a salmonid species in Water Resource Inventory Area 12. The depicted upper limits of freshwater distribution are based primarily on the collective personal knowledge of the participants in the mapping workshops with additional consideration of other sources. Details on these sources can be found in the report associated with this map. The information depicted on this map is current as of April 2003. This map represents a depiction of distribution and may underestimate or overestimate the actual distribution. All accessible floodplain habitat should be considered to have the same species distribution as the mainstem. This map may inaccurately depict the location of water bodies. For example, some water bodies may be incorrectly located on this map, or may not be depicted on this map at all. All users of this map should seek the assistance of qualified professionals such as surveyors, hydrologists, or fishery biologists as needed to ensure that such users possess complete, precise, and up to date information on fish distribution and water body location.

**Barrier Source:**  
Salmon and Steelhead Habitat Inventory and Assessment Program (SSHAP), NWIFC.  
Compiled from sources including WDFW SSHEAR, WDFW Stream Catalog, and TAG knowledge.

**Barrier Coding:** Ca - Cascades, Cu - Culvert, D - Dam,  
F - Falls, T - Floodgate/Tidegate, L - Levee, O - Other.

**Map Projection:** Lambert Conformal Conic (WA Stateplane South)  
**Zone:** 5006 Datum: North American Datum 1983 Units: Feet  
Data derived from DNR: Hydrology Resolution Scale 1:24000  
Transportation Resolution Scale 1:24000  
Data derived from WDFW: StreamNet Resolution Scale 1:100,000  
Cartography By: Ronald McFarlane, NWIFC June 2003

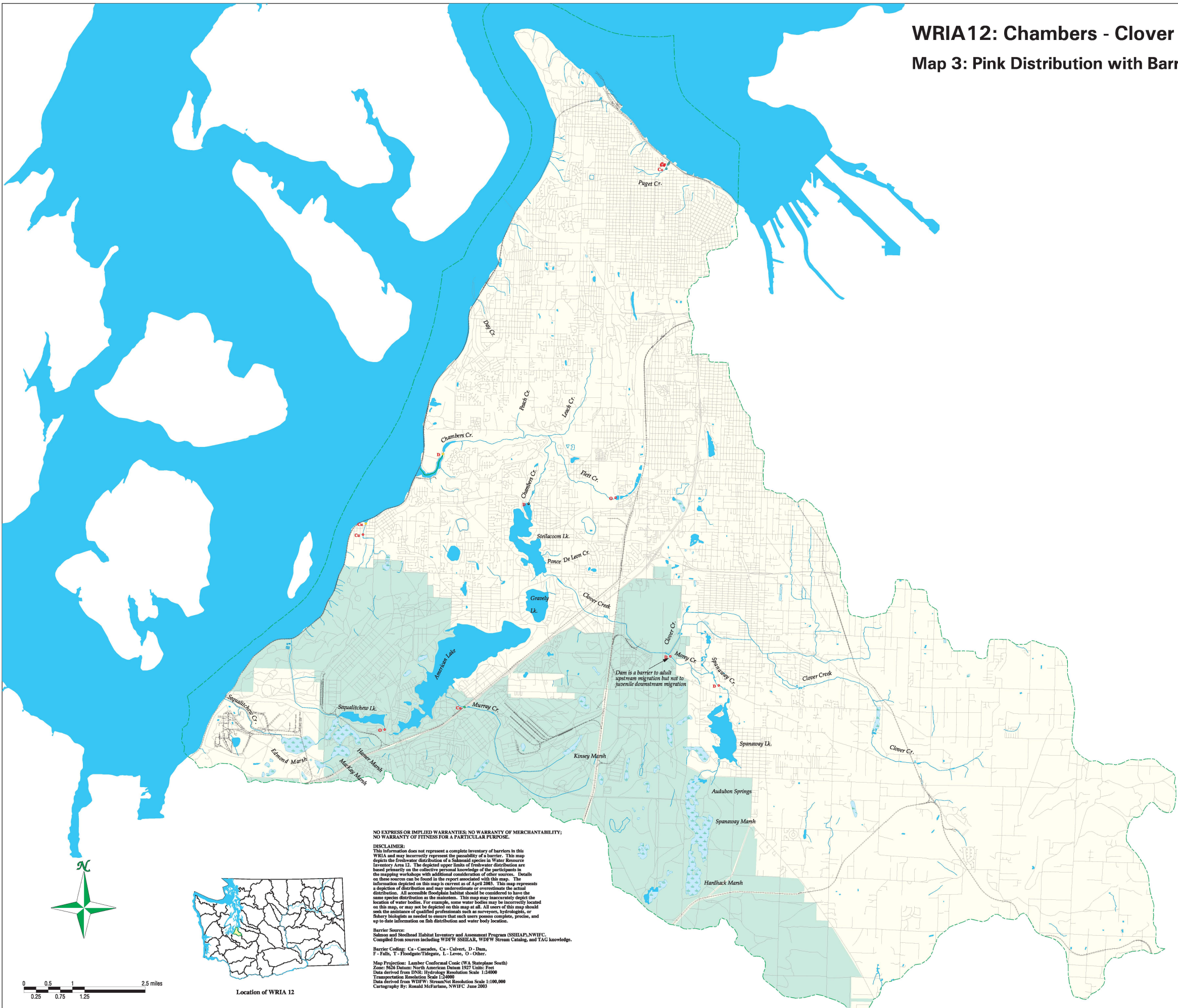
- Artificial Passage
- Not a Barrier
- Unknown Barrier
- Partial Barrier
- Complete Barrier
- Known Distribution
- Presumed Distribution
- Potential/Historic Distribution
- Streams
- Roads
- Railroad
- WRIA 12 Boundary
- Major Lakes and Waterways
- Federal Land Within WRIA 12
- WRIA 12 non-Federal Land
- Swamps/Wetlands

Washington State  
**Conservation**  
Commission

**Northwest Indian**  
Fisheries Commission



WRIA12: Chambers - Clover  
Map 3: Pink Distribution with Barriers



NO EXPRESS OR IMPLIED WARRANTIES; NO WARRANTY OF MERCHANTABILITY;  
NO WARRANTY OF FITNESS FOR A PARTICULAR PURPOSE.

**DISCLAIMER:**  
This information does not represent a complete inventory of barriers in this WRIA and may incorrectly represent the passability of a barrier. This map depicts the freshwater distribution of a salmonid species in Water Resource Inventory Area 12. The depicted upper limits of freshwater distribution are based primarily on the collective personal knowledge of the participants in the mapping workshops with additional consideration of other sources. Details on these sources can be found in the report associated with this map. The information depicted on this map is current as of April 2003. This map represents a depiction of distribution and may underestimate or overestimate the actual distribution. All accessible floodplain habitat should be considered to have the same species distribution as the mainstem. This map may inaccurately depict the location of water bodies. For example, some water bodies may be incorrectly located on this map, or may not be depicted on this map at all. All users of this map should seek the assistance of qualified professionals such as surveyors, hydrologists, or fishery biologists as needed to ensure that such users possess complete, precise, and up to date information on fish distribution and water body location.

**Barrier Source:**  
Salmon and Steelhead Habitat Inventory and Assessment Program (SSHAP), NWIFC.  
Compiled from sources including WDFW SSHAP, WDFW Stream Catalog, and TAG knowledge.

**Barrier Coding:** Ca - Cascade, Cu - Culvert, D - Dam,  
F - Falls, T - Floodgate/Tidegate, L - Levee, O - Other.

**Map Projection:** Lambert Conformal Conic (WA Stateplane South)  
**Zone:** 5006 Datum: North American Datum 1983 Units: Feet  
Data derived from DNR: Hydrology Resolution Scale 1:24000  
Transportation Resolution Scale 1:24000  
Data derived from WDFW: StreamNet Resolution Scale 1:100,000  
Cartography By: Ronald McFarlane, NWIFC June 2003

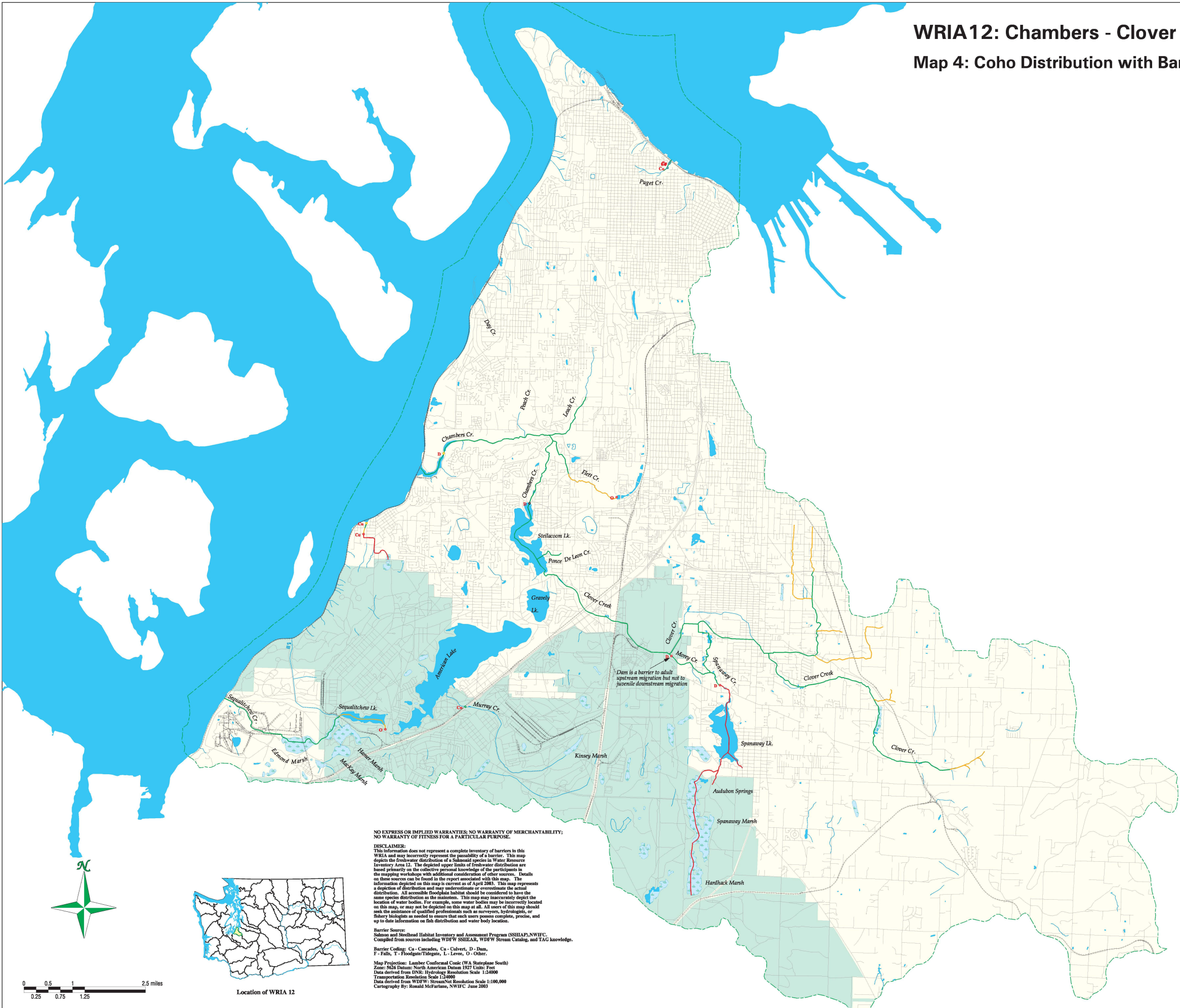
- Artificial Passage
- Not a Barrier
- Unknown Barrier
- Partial Barrier
- Complete Barrier
- Known Distribution
- Presumed Distribution
- Potential/Historic Distribution
- Streams
- Roads
- Railroad
- WRIA 12 Boundary
- Major Lakes and Waterways
- Federal Land Within WRIA 12
- WRIA 12 non-Federal Land
- Swamps/Wetlands

Washington State  
**Conservation**  
Commission

**Northwest Indian**  
Fisheries Commission



WRIA12: Chambers - Clover  
Map 4: Coho Distribution with Barriers



- Artificial Passage
- Not a Barrier
- Unknown Barrier
- Partial Barrier
- Complete Barrier
- Known Distribution
- Presumed Distribution
- Potential/Historic Distribution
- Streams
- Roads
- Railroad
- WRIA 12 Boundary
- Major Lakes and Waterways
- Federal Land Within WRIA 12
- WRIA 12 non-Federal Land
- Swamps/Wetlands

Washington State  
Conservation  
Commission

Northwest Indian  
Fisheries Commission

NO EXPRESS OR IMPLIED WARRANTIES; NO WARRANTY OF MERCHANTABILITY;  
NO WARRANTY OF FITNESS FOR A PARTICULAR PURPOSE.

**DISCLAIMER:**  
This information does not represent a complete inventory of barriers in this WRIA and may incorrectly represent the passability of a barrier. This map depicts the freshwater distribution of a salmonid species in Water Resource Inventory Area 12. The depicted upper limits of freshwater distribution are based primarily on the collective personal knowledge of the participants in the mapping workshops with additional consideration of other sources. Details on these sources can be found in the report associated with this map. The information depicted on this map is current as of April 2003. This map represents a depiction of distribution and may underestimate or overestimate the actual distribution. All accessible floodplain habitat should be considered to have the same species distribution as the mainstem. This map may inaccurately depict the location of water bodies. For example, some water bodies may be incorrectly located on this map, or may not be depicted on this map at all. All users of this map should seek the assistance of qualified professionals such as surveyors, hydrologists, or fishery biologists as needed to ensure that such users possess complete, precise, and up to date information on fish distribution and water body location.

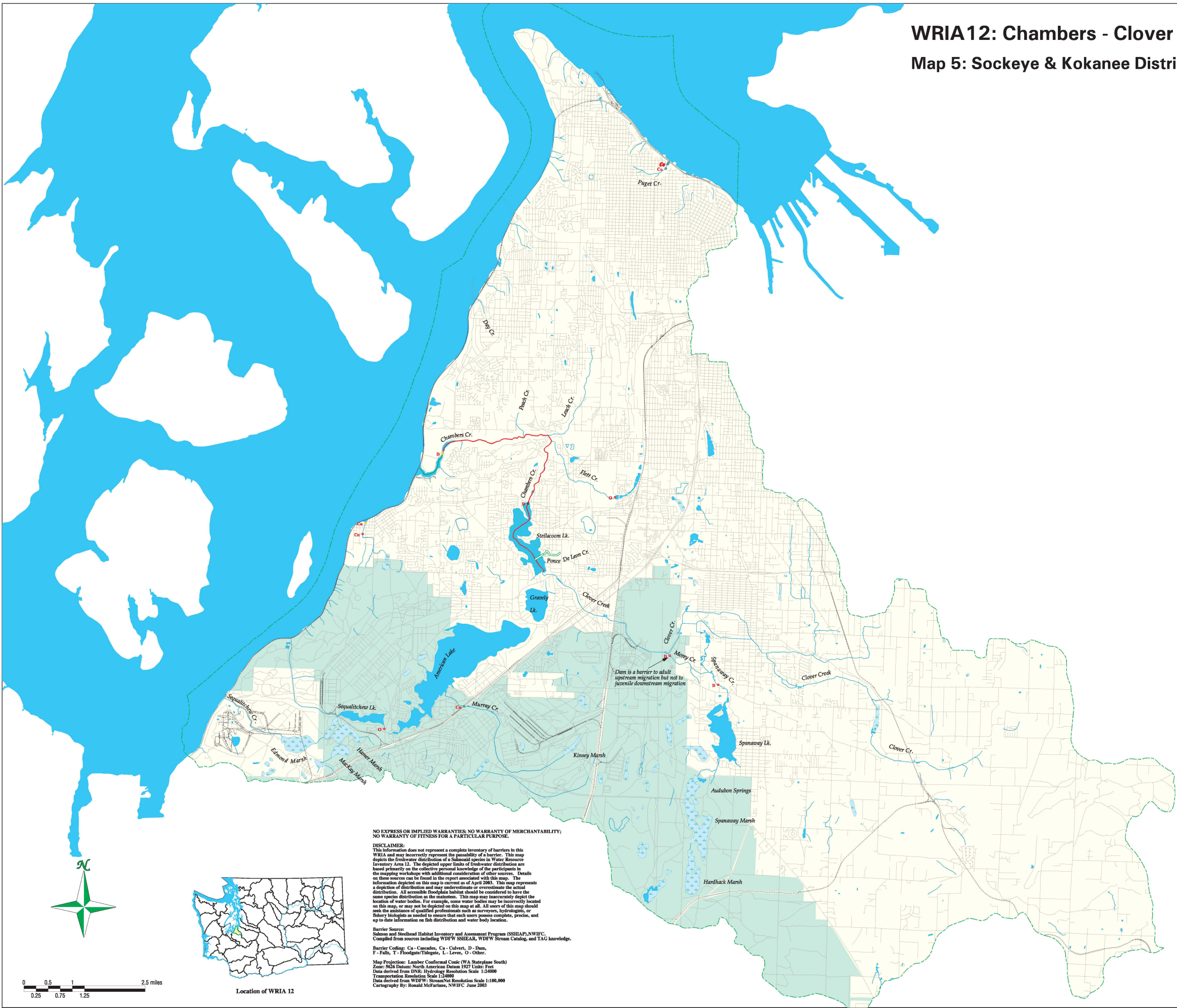
**Barrier Source:**  
Salmon and Steelhead Habitat Inventory and Assessment Program (SSHAP), NWIFC. Compiled from sources including WDFW SSHEAR, WDFW Stream Catalog, and TAG knowledge.

**Barrier Coding:** Ca - Cascade, Cu - Culvert, D - Dam, F - Falls, T - Floodgate/Tidegate, L - Levee, O - Other.

**Map Projection:** Lambert Conformal Conic (WA Stateplane South)  
**Zone:** 5006 Datum: North American Datum 1983 Units: Feet  
Data derived from DNR: Hydrology Resolution Scale 1:24000  
Transportation Resolution Scale 1:24000  
Data derived from WDFW: StreamNet Resolution Scale 1:100,000  
Cartography By: Ronald McFarlane, NWIFC June 2003



WRIA12: Chambers - Clover  
Map 5: Sockeye & Kokanee Distribution with Barriers



- Artificial Passage
- Not a Barrier
- Unknown Barrier
- Partial Barrier
- Complete Barrier
- Known Sockeye Distribution
- Presumed Sockeye Distribution
- Potential/Historic Sockeye Distribution
- Known Kokanee Distribution
- Presumed Kokanee Distribution
- Potential/Historic Kokanee Distribution
- Streams
- Roads
- Railroad
- WRIA 12 Boundary
- Known Kokanee Distribution
- Major Lakes and Waterways
- Federal Land Within WRIA 12
- WRIA 12 non-Federal Land
- Swamps/Wetlands

NO EXPRESS OR IMPLIED WARRANTIES; NO WARRANTY OF MERCHANTABILITY;  
NO WARRANTY OF FITNESS FOR A PARTICULAR PURPOSE.

**DISCLAIMER:**  
This information does not represent a complete inventory of barriers in this WRIA and may incorrectly represent the passability of a barrier. This map depicts the freshwater distribution of a salmonid species in Water Resource Inventory Area 12. The depicted upper limits of freshwater distribution are based primarily on the collective personal knowledge of the participants in the mapping workshops with additional consideration of other sources. Details on these sources can be found in the report associated with this map. The information depicted on this map is current as of April 2003. This map represents a depiction of distribution and may underestimate or overestimate the actual distribution. All accessible floodplain habitat should be considered to have the same species distribution as the mainstem. This map may inaccurately depict the location of water bodies. For example, some water bodies may be incorrectly located on this map, or may not be depicted on this map at all. All users of this map should seek the assistance of qualified professionals such as surveyors, hydrologists, or fishery biologists as needed to ensure that such users possess complete, precise, and up to date information on fish distribution and water body location.

**Barrier Source:**  
Salmon and Steelhead Habitat Inventory and Assessment Program (SSHAP), NWIFC.  
Compiled from sources including WDFW SSHAP, WDFW Stream Catalog, and TAG knowledge.

**Barrier Coding:** Ca - Cascade, Cu - Culvert, D - Dam,  
F - Falls, T - Floodgate/Tidegate, L - Levee, O - Other.

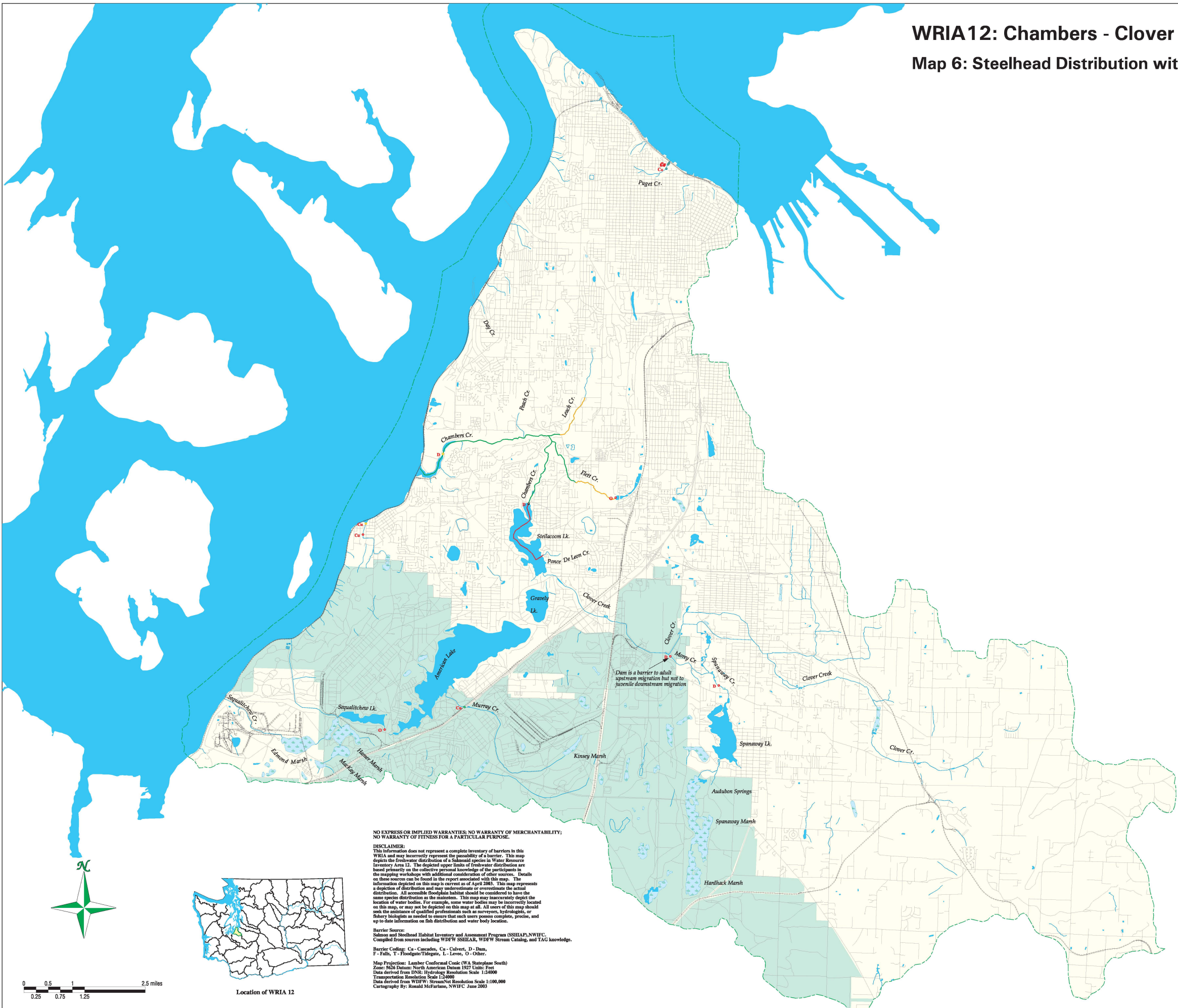
**Map Projection:** Lambert Conformal Conic (WA Stateplane South)  
Zone: 5000 Datum: North American Datum 1983 Units: Feet  
Data derived from DNR: Hydrology Resolution Scale 1:24000  
Transportation Resolution Scale 1:24000  
Data derived from WDFW: StreamNet Resolution Scale 1:100,000  
Cartography By: Ronald McFarlane, NWIFC June 2003

Washington State  
**Conservation**  
Commission

 Northwest Indian  
Fisheries Commission



WRIA12: Chambers - Clover  
Map 6: Steelhead Distribution with Barriers



- Artificial Passage
- Not a Barrier
- Unknown Barrier
- Partial Barrier
- Complete Barrier
- Known Distribution
- Presumed Distribution
- Potential/Historic Distribution
- Streams
- Roads
- Railroad
- WRIA 12 Boundary
- Major Lakes and Waterways
- Federal Land Within WRIA 12
- WRIA 12 non-Federal Land
- Swamps/Wetlands

NO EXPRESS OR IMPLIED WARRANTIES; NO WARRANTY OF MERCHANTABILITY;  
NO WARRANTY OF FITNESS FOR A PARTICULAR PURPOSE.

**DISCLAIMER:**  
This information does not represent a complete inventory of barriers in this WRIA and may incorrectly represent the passability of a barrier. This map depicts the freshwater distribution of a salmonid species in Water Resource Inventory Area 12. The depicted upper limits of freshwater distribution are based primarily on the collective personal knowledge of the participants in the mapping workshops with additional consideration of other sources. Details on these sources can be found in the report associated with this map. The information depicted on this map is current as of April 2003. This map represents a depiction of distribution and may underestimate or overestimate the actual distribution. All accessible floodplain habitat should be considered to have the same species distribution as the mainstem. This map may inaccurately depict the location of water bodies. For example, some water bodies may be incorrectly located on this map, or may not be depicted on this map at all. All users of this map should seek the assistance of qualified professionals such as surveyors, hydrologists, or fishery biologists as needed to ensure that such users possess complete, precise, and up to date information on fish distribution and water body location.

**Barrier Source:**  
Salmon and Steelhead Habitat Inventory and Assessment Program (SSHAP), NWIFC. Compiled from sources including WDFW SSHEAR, WDFW Stream Catalog, and TAG knowledge.

**Barrier Coding:** Ca - Cascade, Cu - Culvert, D - Dam, F - Falls, T - Floodgate/Tidegate, L - Levee, O - Other.

**Map Projection:** Lambert Conformal Conic (WA Stateplane South)  
**Zone:** 5006 Datum: North American Datum 1983 Units: Feet  
Data derived from DNR: Hydrology Resolution Scale 1:24000  
Transportation Resolution Scale 1:24000  
Data derived from WDFW: StreamNet Resolution Scale 1:100,000  
Cartography By: Ronald McFarlane, NWIFC June 2003

Washington State  
**Conservation**  
Commission

**Northwest Indian**  
Fisheries Commission



WRIA12: Chambers - Clover  
Map 7: Cutthroat Distribution with Barriers

