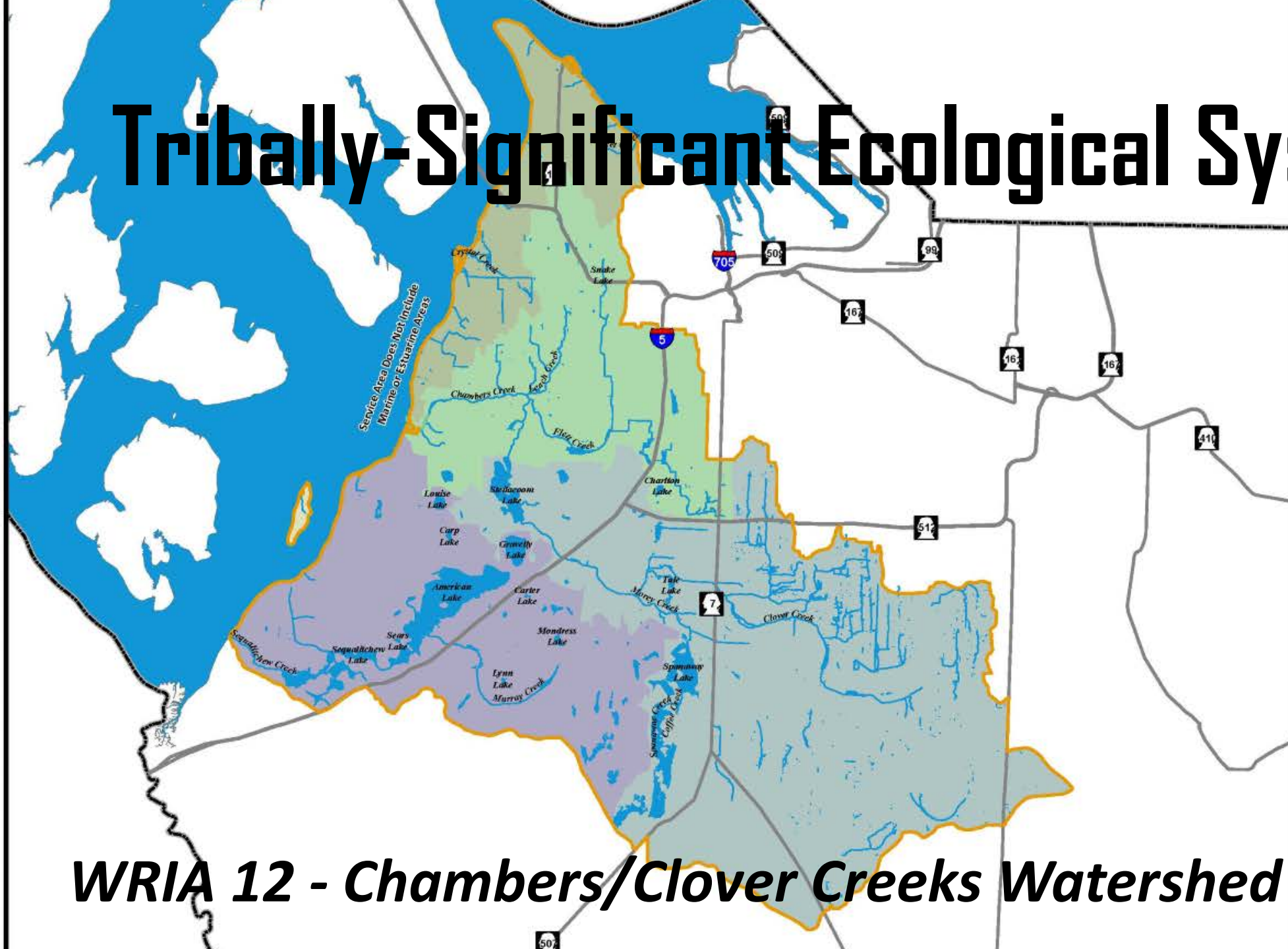


Tribally-Significant Ecological Systems



Legend

WRIA 12 Sub-basins

- American Lake
- Chambers Bay
- Clover Creek/Steilacoom
- Islands (Ketron Island)
- Tacoma West
- Watershed Service Area Boundary
- Major Roads
- Creeks & Rivers
- Waterbodies
- Pierce County Boundary

WRIA 12 - Chambers/Clover Creeks Watershed



Pierce County
Public Works
Surface Water Management

The map features are approximate and are intended only to provide an indication of said features. Additional areas that have not been mapped may be present. This is not a survey. The County assumes no liability for variations ascertained by actual survey. ALL DATA IS DEEMED PROVIDED AS-IS AND WITHOUT WARRANTIES. The County makes no warranty of fitness for a particular purpose.

February 2015

Fort
Nisqually &
Hudson Bay
Company
Lands
(1833-46)



Tribally-Treasured Stewardship - Since A Time Immemorial



WASHINGTON TERRITORY VIEWS.

TACOMA, WASH. TER.



Yelm Jim's Fish Trap at Puyallup Indian Reservation.
tehell, Puyallup, Washington.

WRIA 12 HISTORICAL ECOLOGY

Fish, Animal, Plants – Traditional Resource Conditions



This picture was taken at the Union Fisherman's Dock in Astoria, Oregon in about 1910.
Left to right - Salmon weights 116 lbs and 121 lbs.
They were salted down in 100 lb barrels and sent to Europe on sailing ships.



Wm. D. Jackson

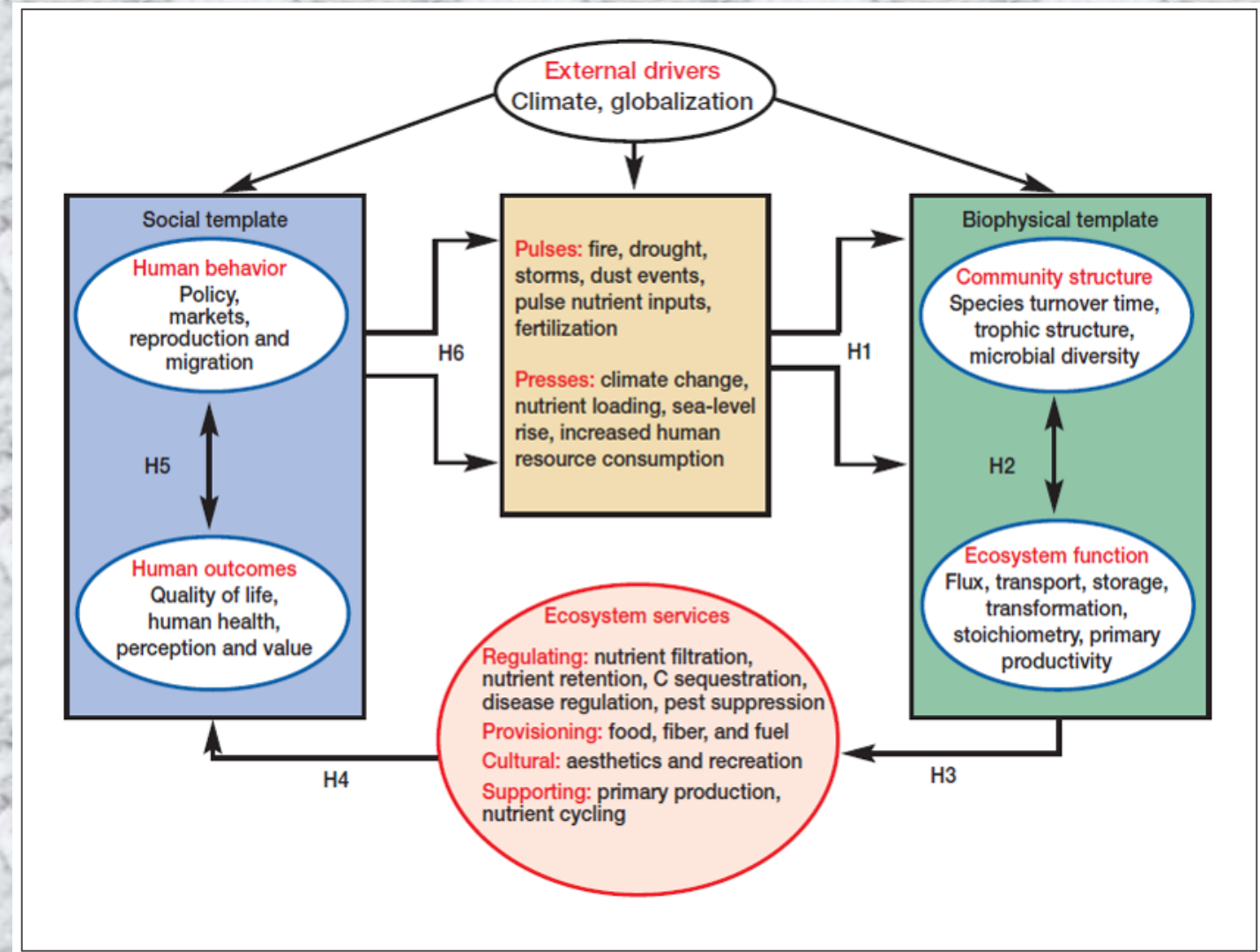
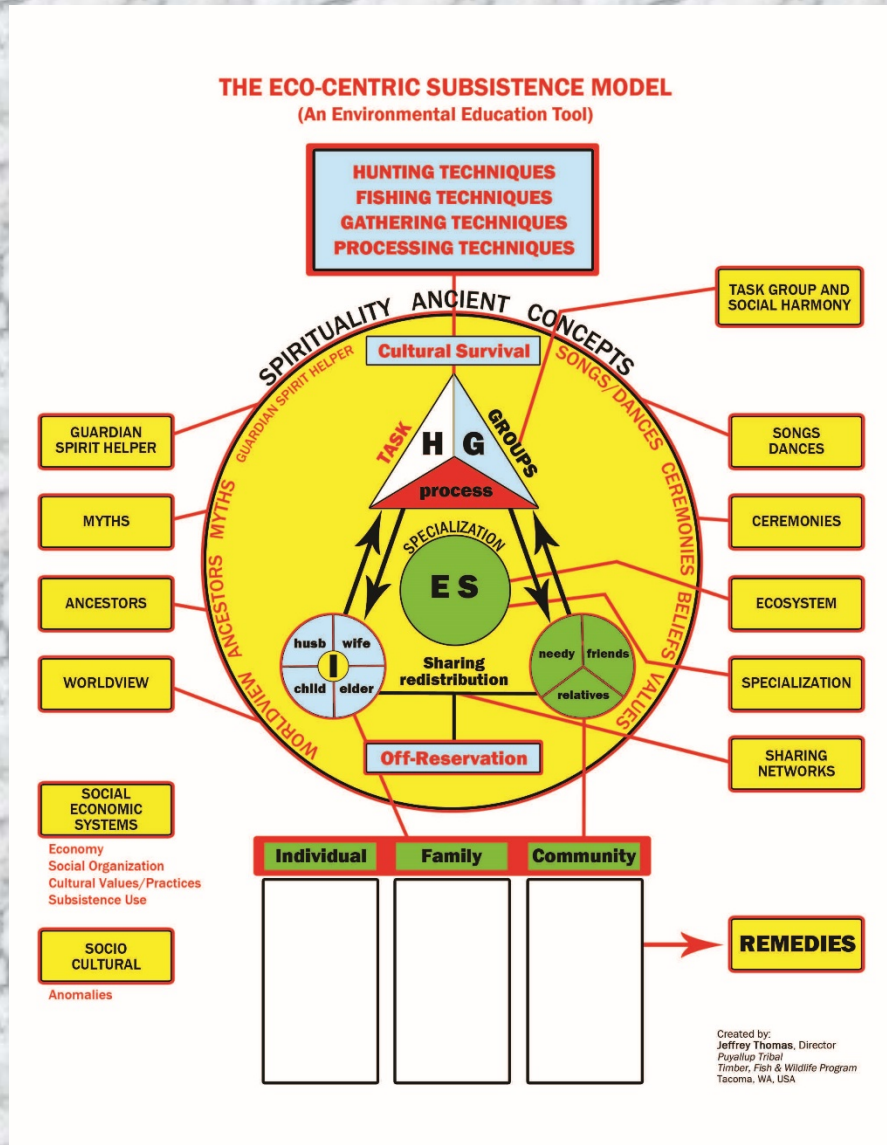
Traditional Tribal Communities - Subsistence Resources



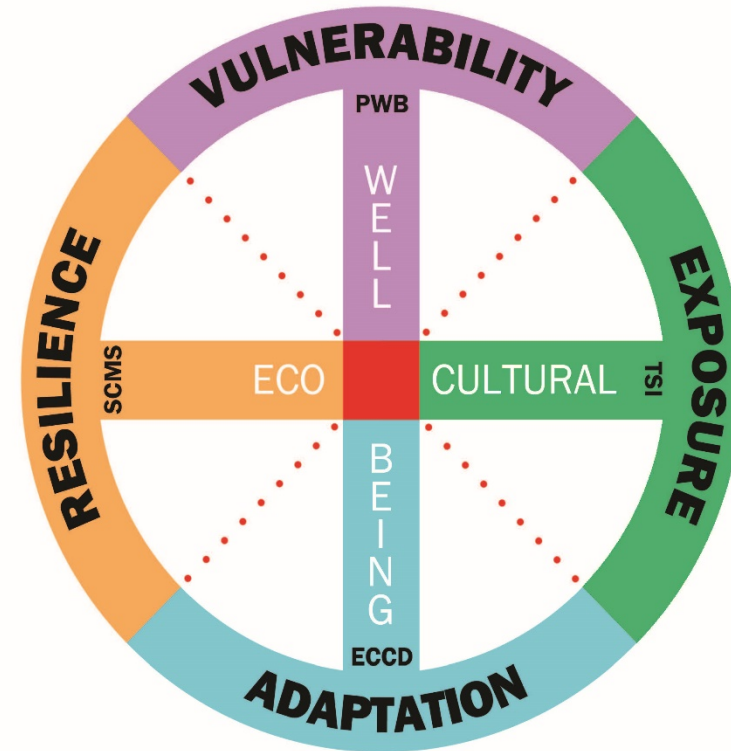
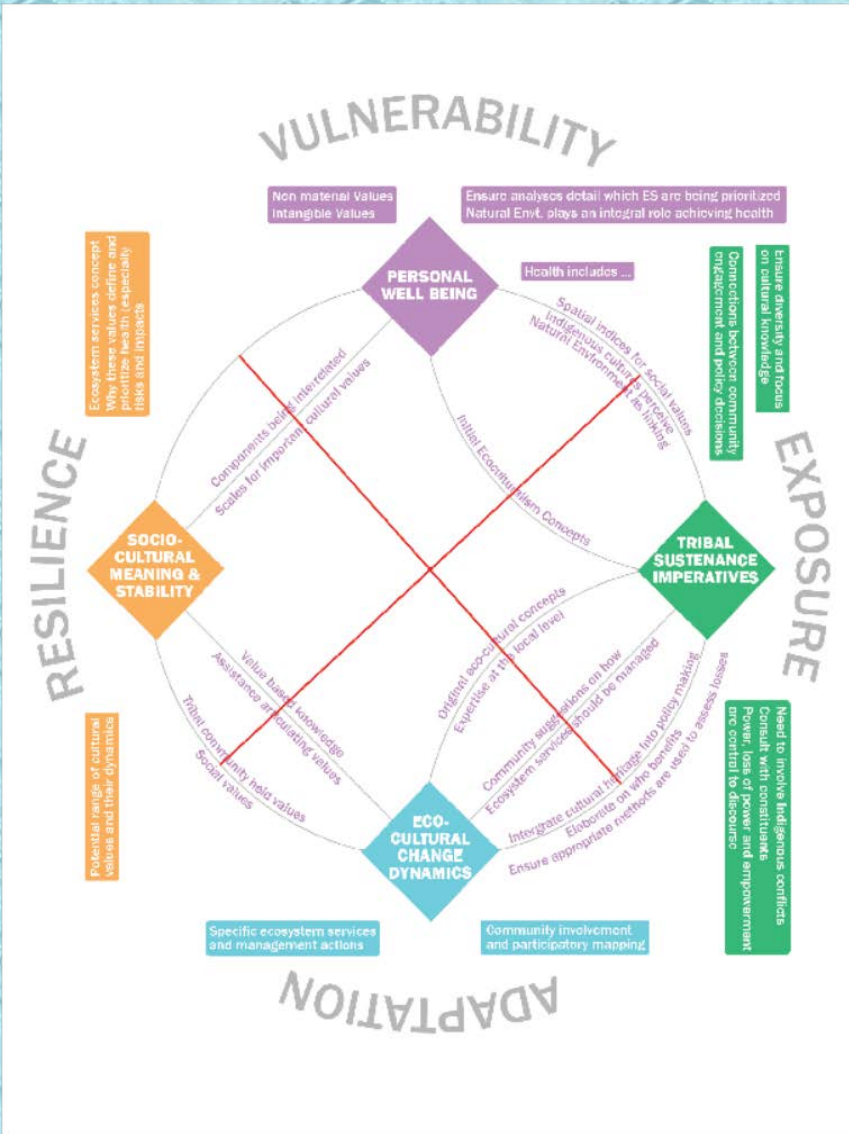
Washington Tribes: 1st (1856) – and 2nd (1974) - Treaty Wars



Local Tribal Subsistence & Social-Ecological Systems Models



Restoring WRIA 12 Ecological Systems: Tribal Community Sustenance Dynamics & Medicine Wheel Models



Tribally-Significant Ecological Systems: WRIA 12 (Chambers/Clover Creeks)

Presented to WRIA 12 Streamflow Restoration Committee
Lakewood Community Center
November 13, 2019

Prepared By:

Jeffrey P. Thomas, Director

Timber, Fish & Wildlife Program

Fisheries Department

Puyallup Tribe of Indians

Jeffrey.Thomas@PuyallupTribe-nsn.gov

253-680-5565/office

253-405-7478/cell