

WRIA 12 WRE Plan Status Summary

Subbasins	3 Subbasins developed June 12, 2019. <ul style="list-style-type: none"> Chambers Creek Clover Creek Sequalitchew Creek
Consumptive Use Estimate	Moderate Growth Consumptive Use Estimate: 0.08 cfs / 57.4 AFY (finalized March 11, 2020)
Offset Target	High Growth Consumptive Use Estimate: 0.12 cfs / 89.8 AFY (finalized March 11, 2020)
Projects	Two projects with offset estimates of 1,425 AFY . <ul style="list-style-type: none"> Sequalitchew Creek Restoration: 724 AFY South Tacoma Channel: 701 AFY Conceptual water offset projects without estimates. <ul style="list-style-type: none"> Reclaimed water projects Clover Creek water rights At least one habitat project in each subbasin. A Water Conservation Education and Incentive Program
Resiliency	Address in project descriptions
NEB	<ul style="list-style-type: none"> 1,425 AFY in offsets compared to 89.9 AFY in CU. At least one project with habitat benefits in each subbasin.

Adaptive Management Recommendations	Tracking and monitoring: <ul style="list-style-type: none"> Track projects with a centralized database. Track new PE wells. Strategy for long-term water management. Oversight and adaptation: <ul style="list-style-type: none"> Periodic reporting on project status and PE wells. Recommended actions if offset projects do not keep pace with wells. Anticipated plan implementation by entity.
Policy and Regulatory Recommendations	Recommendations that are included in the draft Plan: <ul style="list-style-type: none"> Update PE Well Log—track new PE wells. Fund improvements and connections to small public water systems. Drought Response Limits with Exemptions for Gardens Recommendations for rulemaking and legislative action: <ul style="list-style-type: none"> Expand exemptions to PE well drought restrictions. Add exemptions to stream closures for environmental projects Statewide water conservation program. Funding to implement the plan.
Plan Review Status	Plan ready for red flag review prior to local review.



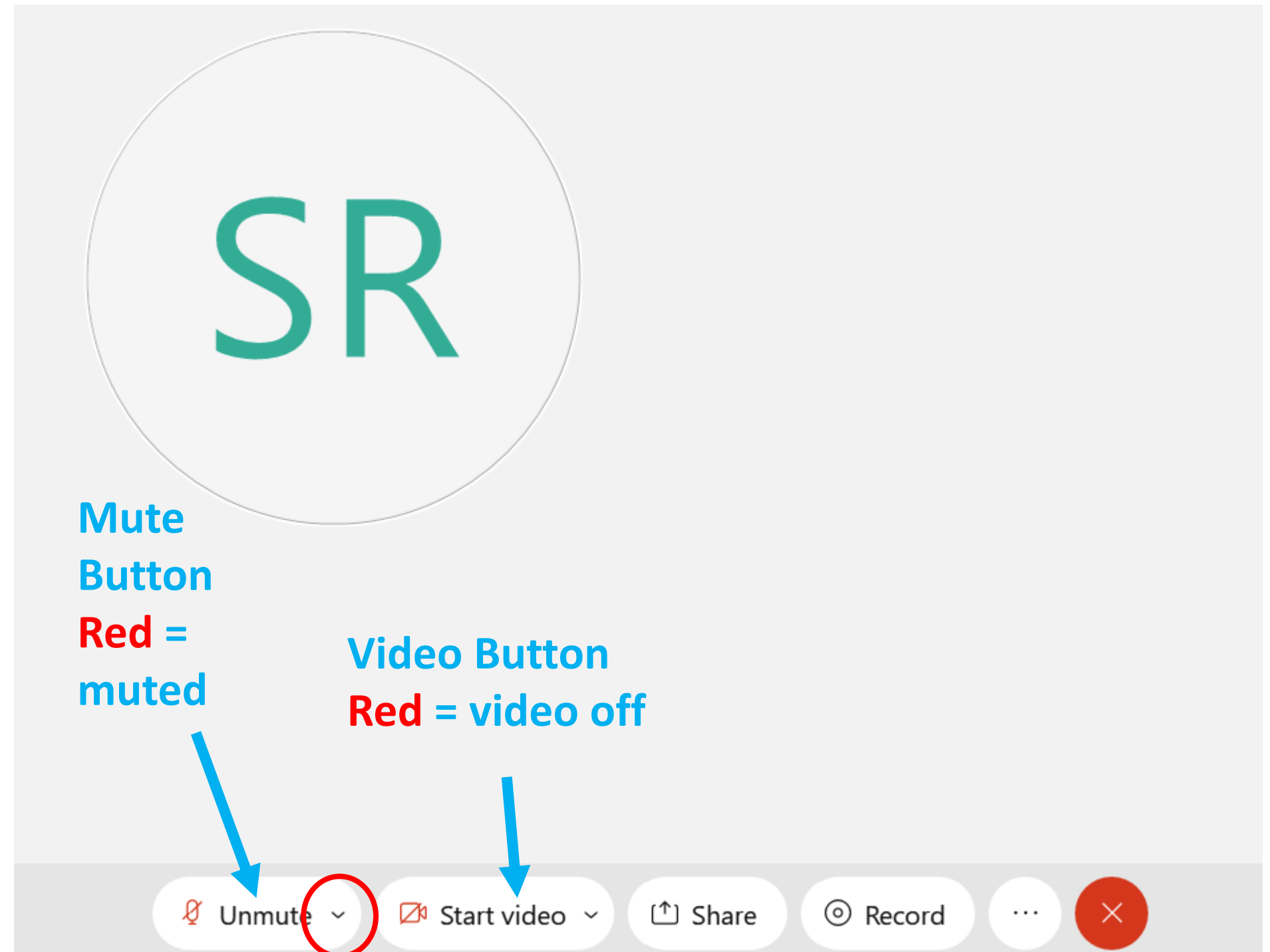
WRIA 12 Watershed Restoration and Enhancement Committee Meeting

December 9, 2020



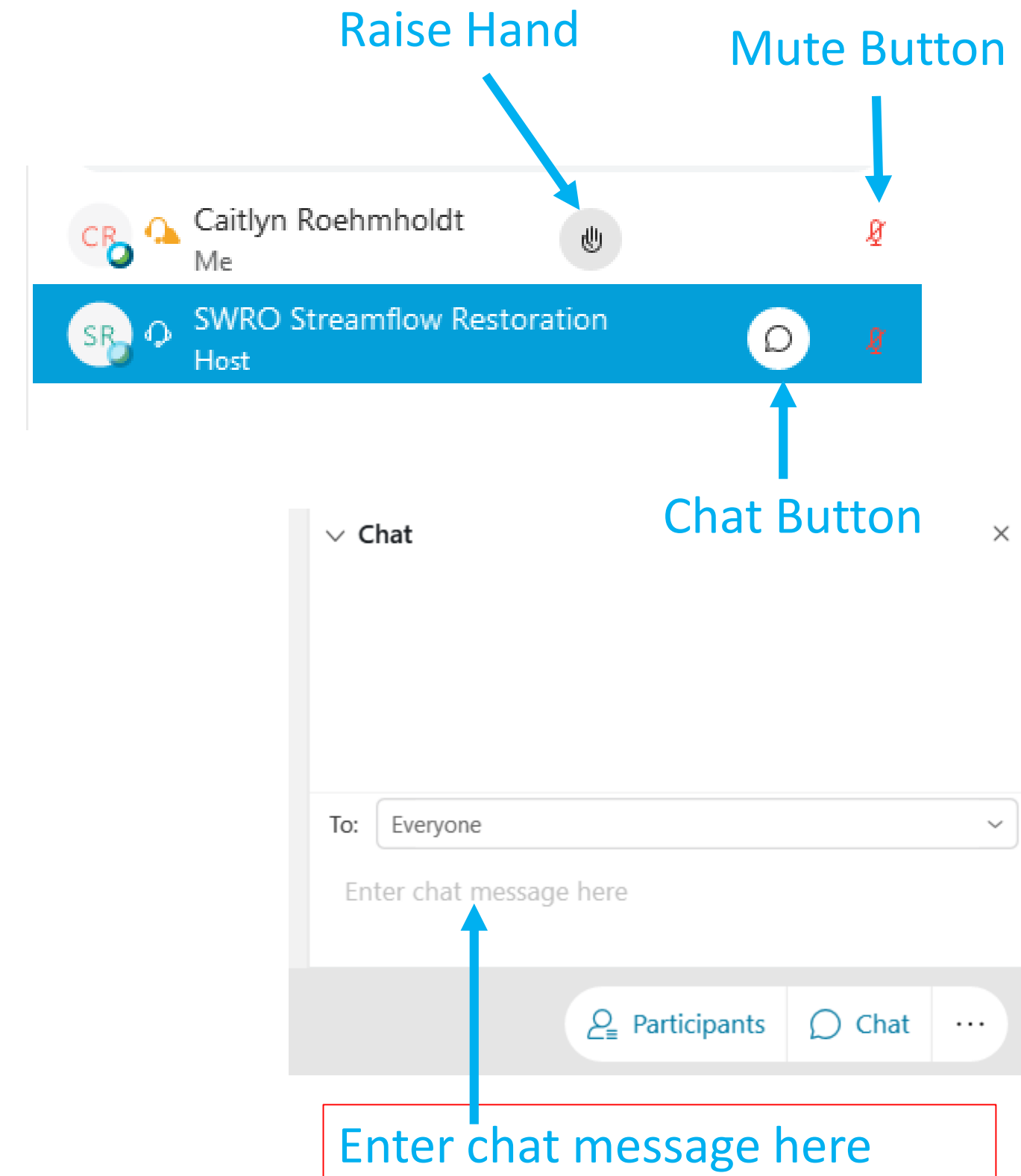
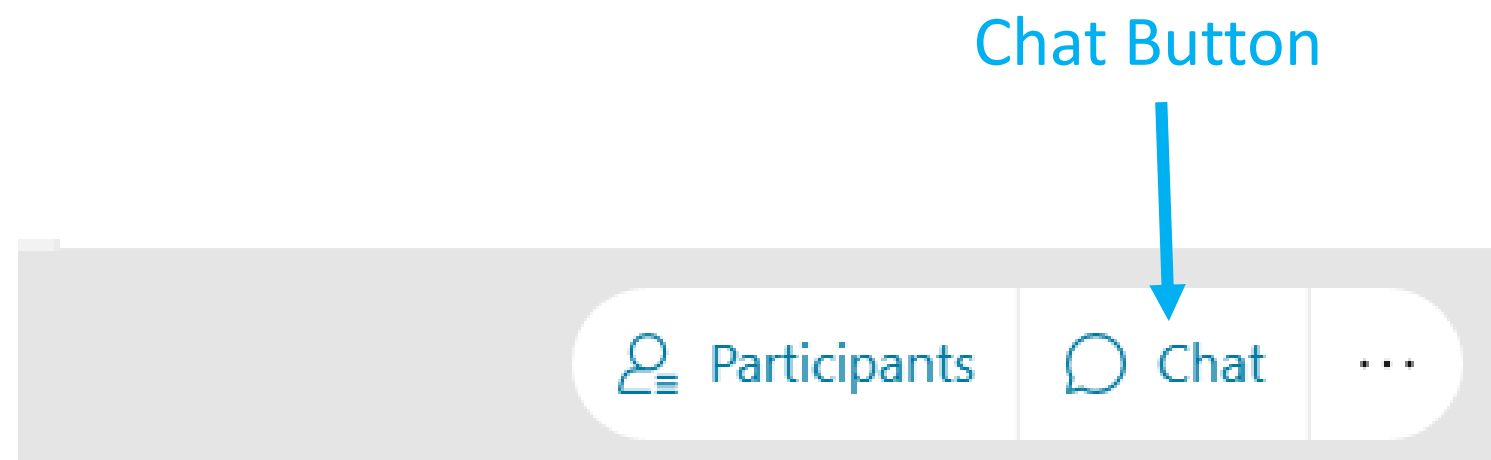
WebEx Participation Tips

- Use a [headset/headphones](#) or take the call from a quiet space to reduce background noise/echo.
- Keep your phone or headset [muted](#) unless you are speaking to the group.
- If using phone, [do not put us on hold](#). We will have to listen to your hold music!
- Turn [off video](#) to conserve bandwidth.



WebEx Participation Tips

- Use the [chat function](#) to submit questions and comments and/or request to speak to the group
- Remember to [state your name](#) when you speak.



Agenda

- Welcome, Roll Call, and Committee Business
 - WebEx logistics and technology check.
 - October meeting summary.
 - Announcements and updates.
 - Public comment.
- Plan Review:
 - Walk through changes in the plan.
 - Highlight recommended changes from workgroup.
 - Walk through new material.
- Wrap up

Announcements and Updates



- Covid-19: Ecology staff working remotely until June 2021.
 - Let Ecology know if your committee participation is impacted by COVID-19.
- Photo of WRIA 12 for plan cover.
- Committee announcements
- Public comment

Plan Review



- Today: Walk through recent edits and new sections.
- After meeting: Ecology makes edits based on in-meeting feedback.
- Red flag review: at least 2 weeks to identify anything in the plan that would prevent plan approval.
- January 13 meeting: green light to send plan for 3 month local review.

Anticipated Changes During Red Flag Review

- Final proofread.
- Summary map for Executive Summary.
- Updates to table, figure, and appendix numbers.
- Updates to project map.
- Final formatting.
- Accessibility review.
- Finalizing appendices.
- Confirm citations/references.

Wrap Up and Next Steps

- Next meeting: January 13, 2021.
 - Final prep for sending plan for local review.
- Review plan for anything that would prevent plan approval.
 - Contact Rebecca with your red flags as early as possible to allow time to respond.
- Briefing presentation is available on Box.
 - Updated with most recent project information.
 - Customizable. Instructions for the “short version” are included in the comments.
- See interactive slide for additional next steps.

10 Minute Break

