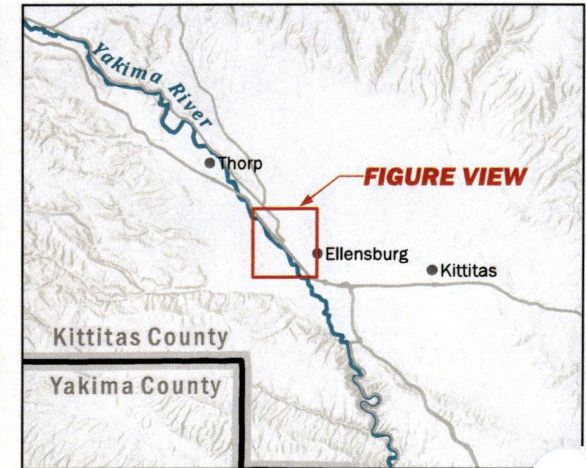
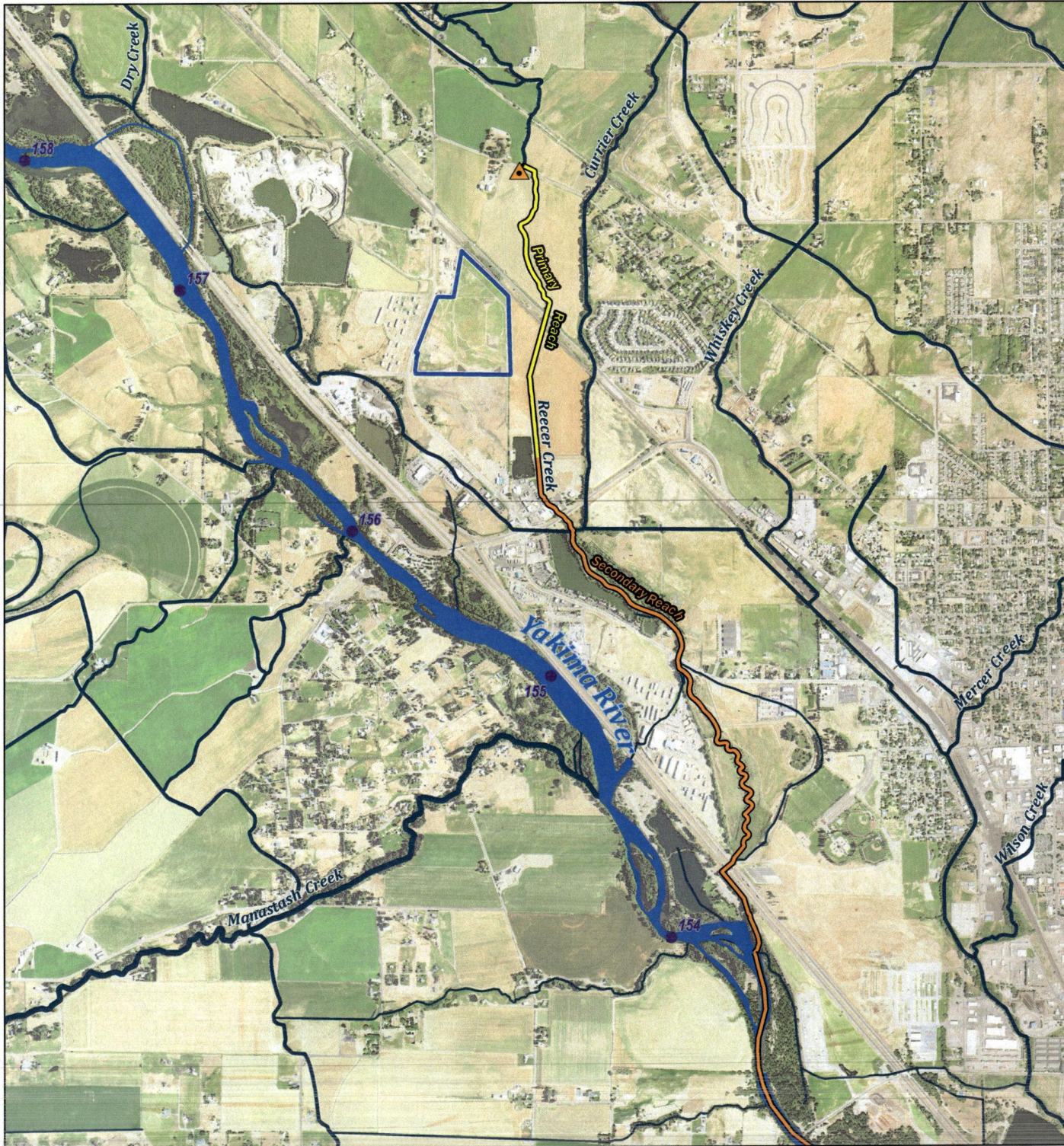








GIS Data & Imagery: Kittitas County WaterBanks, 2027; Kittitas County WaterBanks, 2027; GIS Data and Duke Project Vicinity Map | Date: February 2, 2025



-  Existing Point of Diversion¹
-  Authorized Place of Use¹
-  Primary Reach
-  Secondary Reach
Extends to River Mile 127
-  Watercourse (WA DNR)²
-  USGS River Mile

Notes:

1. Place of use and point of withdrawal mapped using Ecology's online GIS database.
2. Some watercourse data from WA DNR has been slightly altered for cartographic purposes.

CENTRAL REGIONAL OFFICE

FEB 21 2025

RECEIVED



2,500

5,000

Feet

Duke and Dude Project Vicinity Map

S4-83608-J Report of Examination
Kittitas County, Washington

Aspect
CONSULTING

FEB-2024
PROJECT NO.
210277

BY:
SSS / WEG
REVISED BY:
KMJ

FIGURE NO.
1