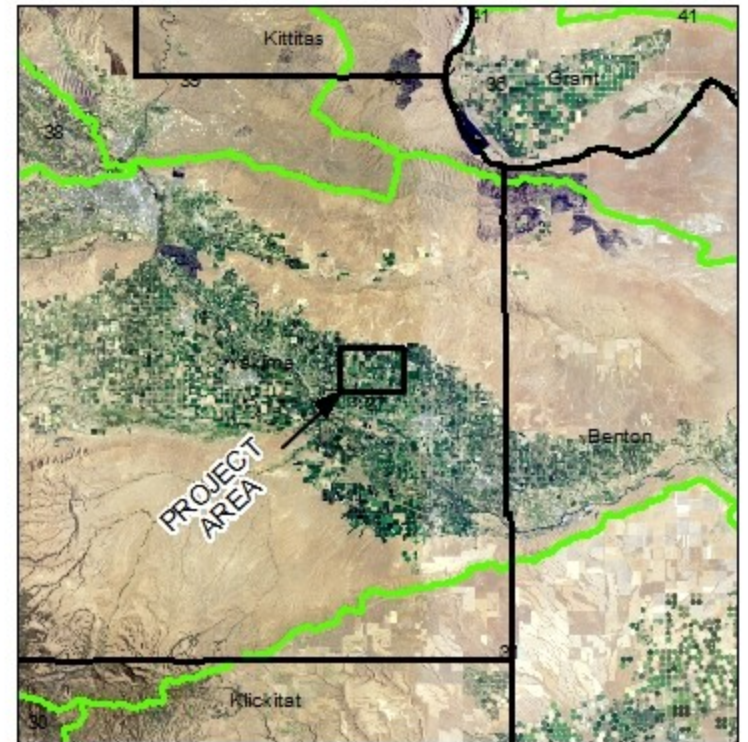







North Outlook Ranch LLC
 G4-33317-23
 T11N/R22E
 WRIA 37 - Yakima County



Basemap - NAIP 2017 Aerial Photo

-  Townships
 -  Sections
 -  County
 -  WRIA
-  Authorized Place of Use and Proposed POW Location



0 500 1,000 2,000 3,000 4,000 Feet

Basemap - NAIP 2017 Aerial Photo



Comment:

Place of use and source locations are as defined within the Report of Examination cover sheet for the document identified in the header above.