



Where to start?

Prioritizing conservation actions in urbanizing landscapes

PRESENTED BY

Ailene Ettinger

Quantitative ecologist, The Nature Conservancy,
Washington





Where to start?

Prioritizing conservation actions in urbanizing landscapes

PRESENTED BY

Ailene Ettinger

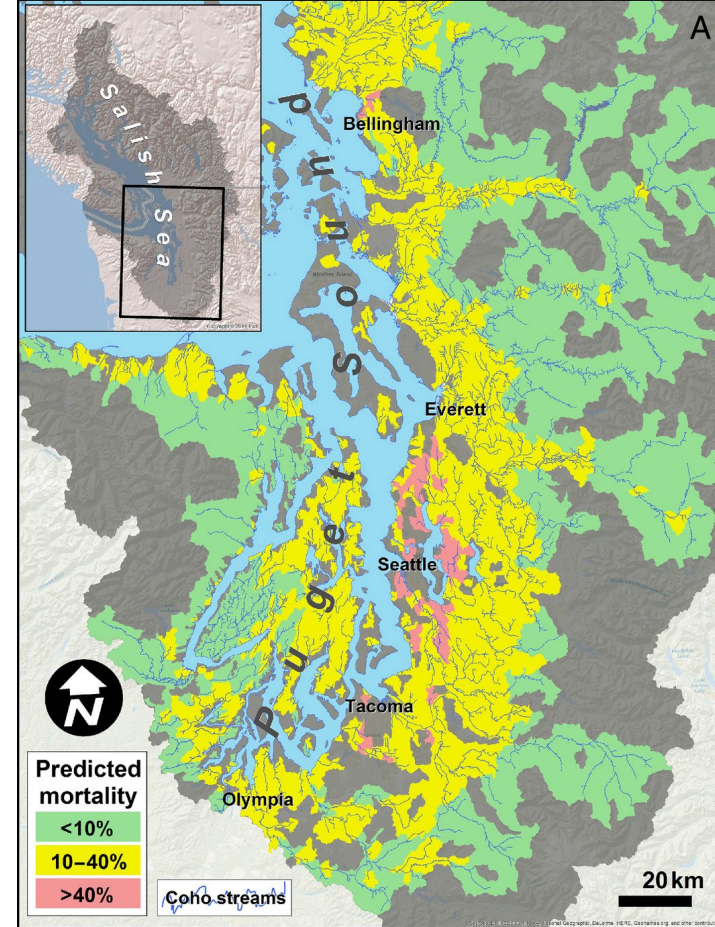
Quantitative ecologist, The Nature Conservancy,
Washington



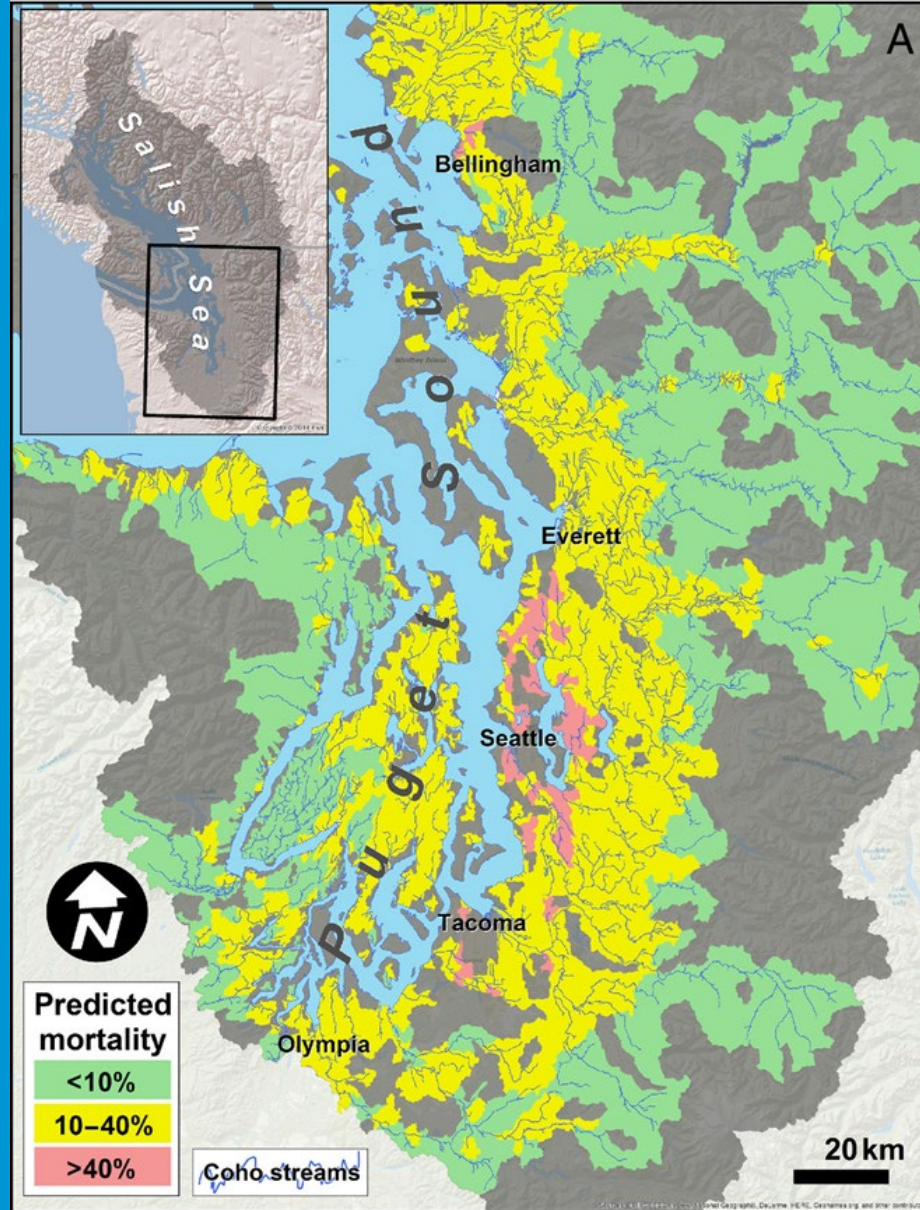
Eric Buhle (NOAA)
Blake Feist (NOAA)
Emily Howe (TNC)
Jamie Robertson (TNC)

Phil Levin (TNC)
Nat Scholz (NOAA)
Julann Spromberg (NOAA)

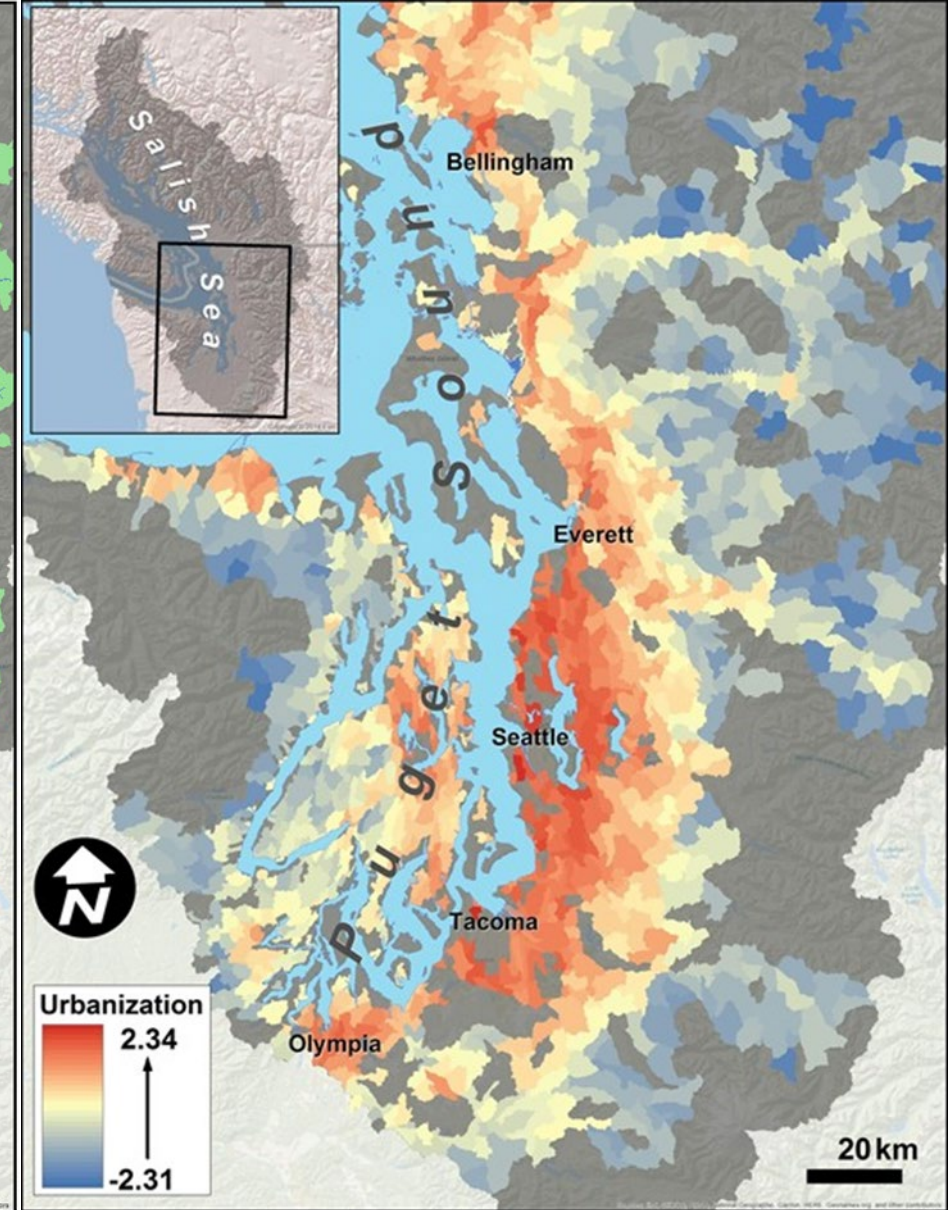
Urbanization is transforming landscapes and altering surface water runoff



Threat maps do not tell you where to act.

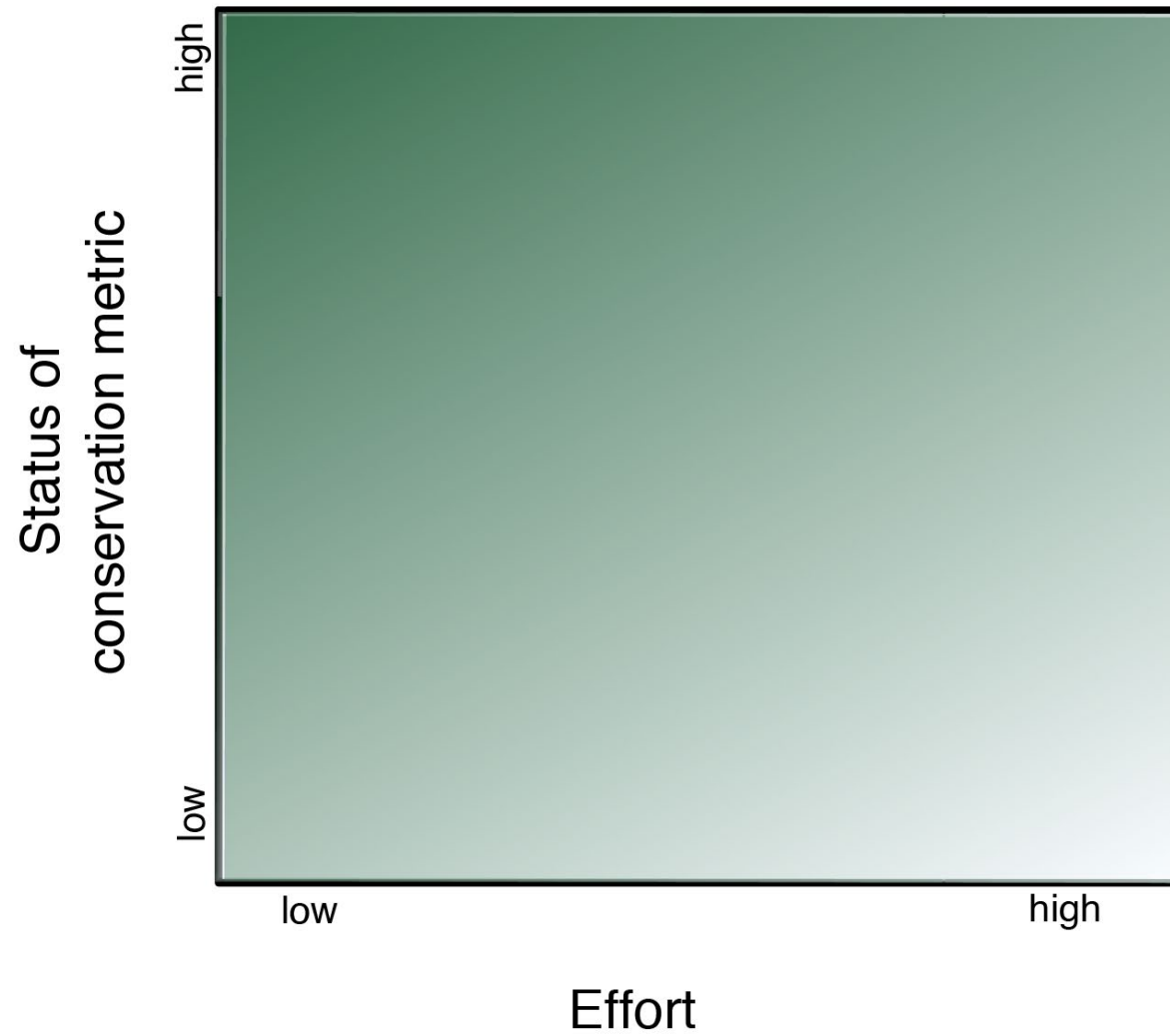


Feist et al 2017

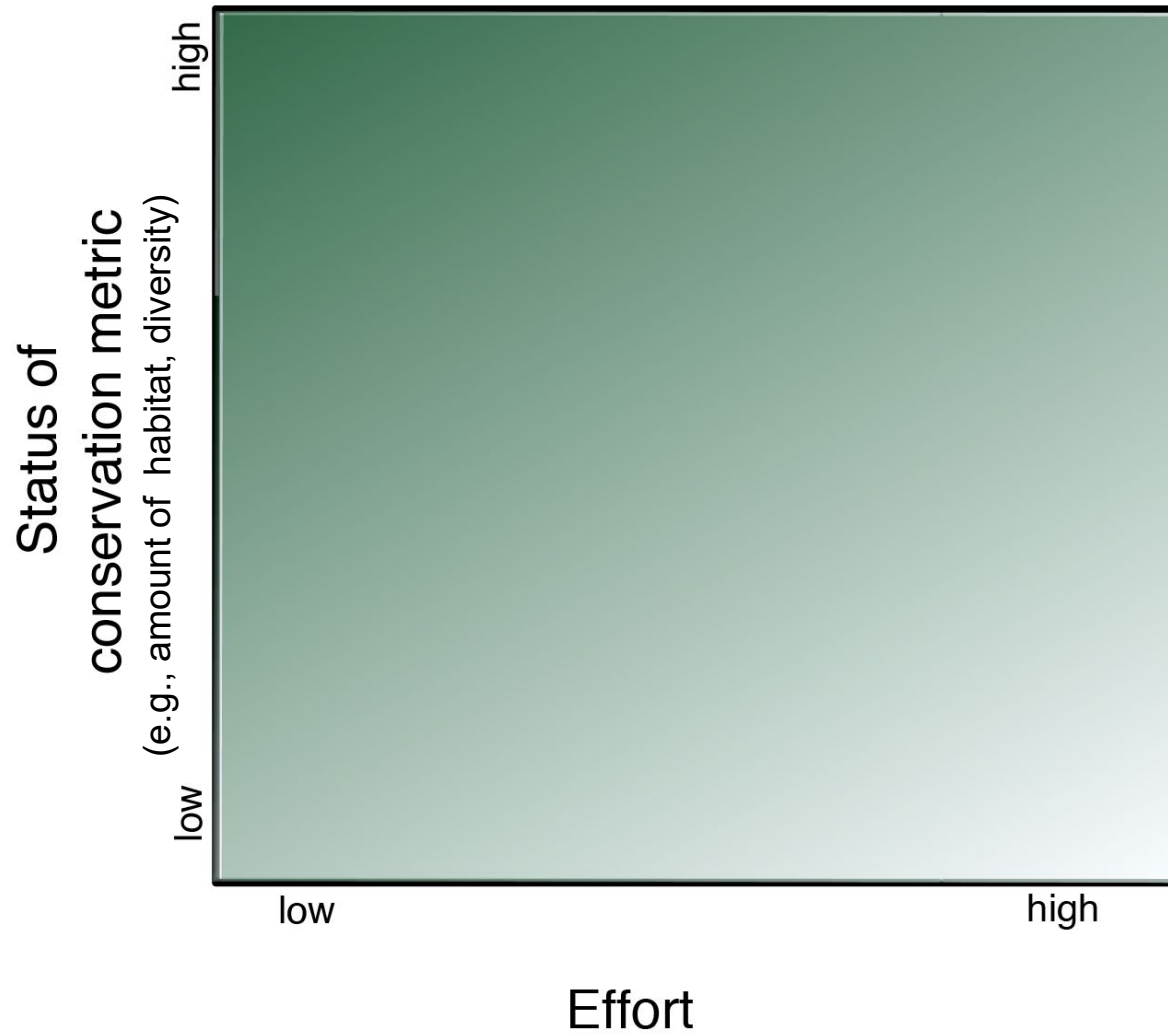


Ettinger et al 2021

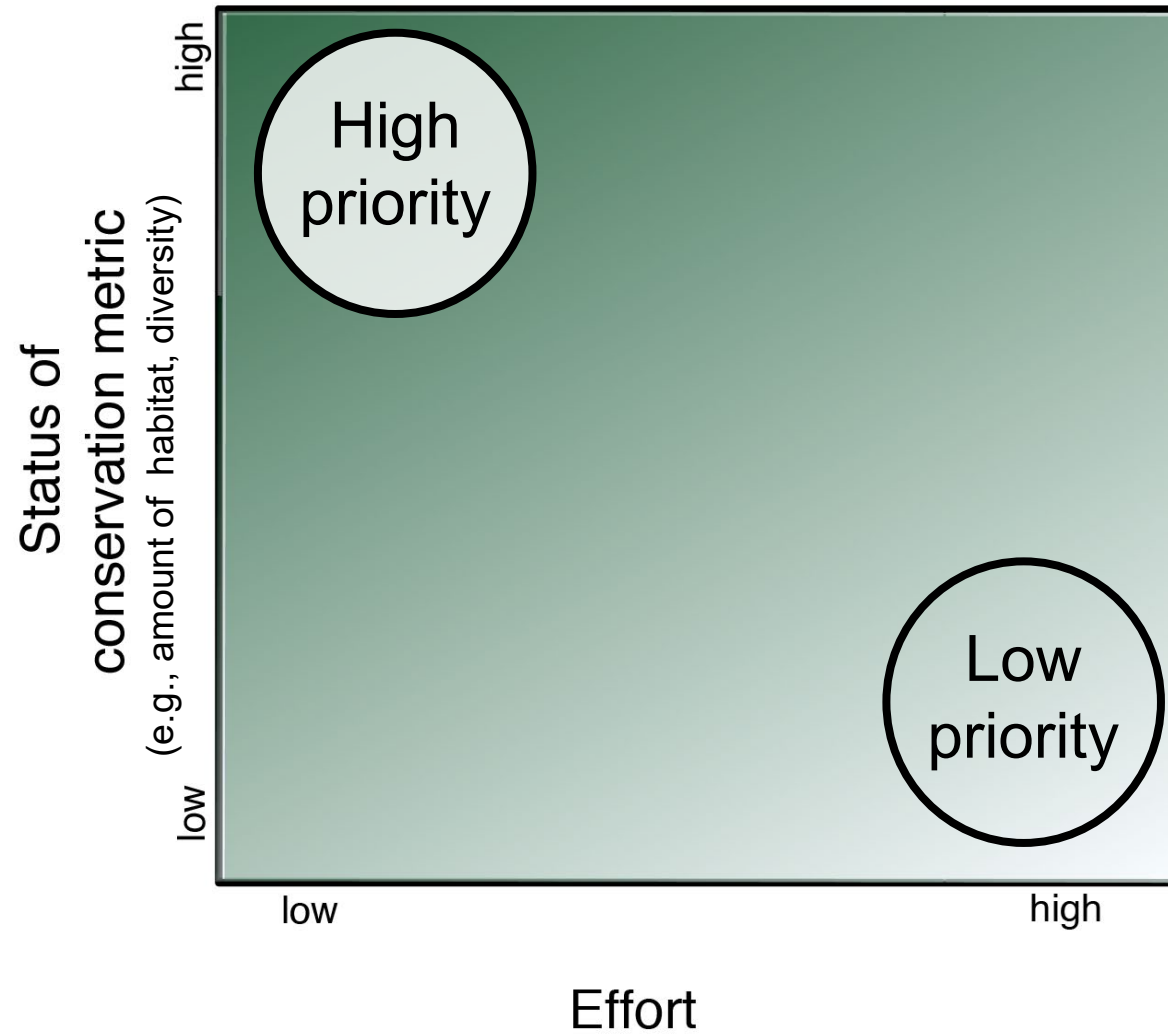
A framework for prioritizing conservation action:



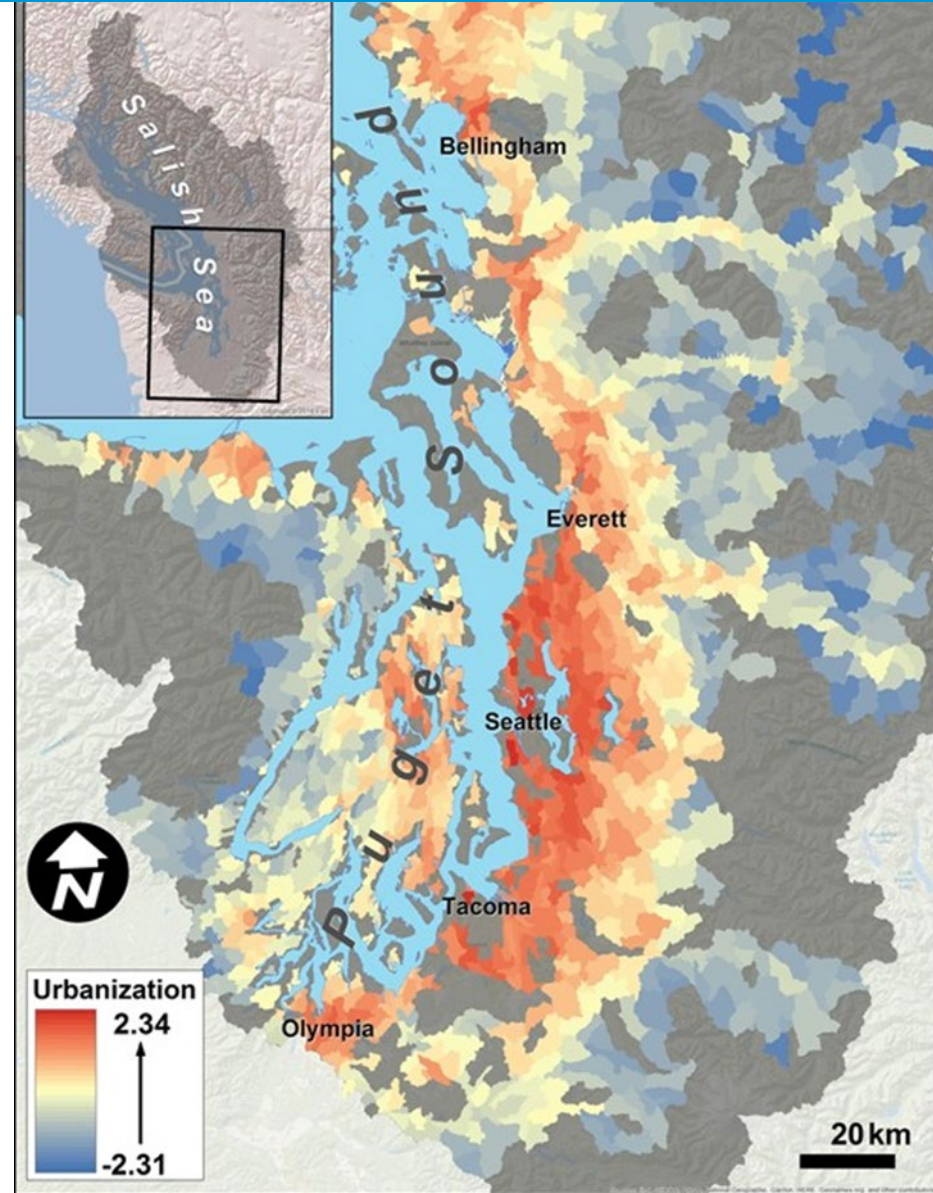
A framework for prioritizing conservation action:



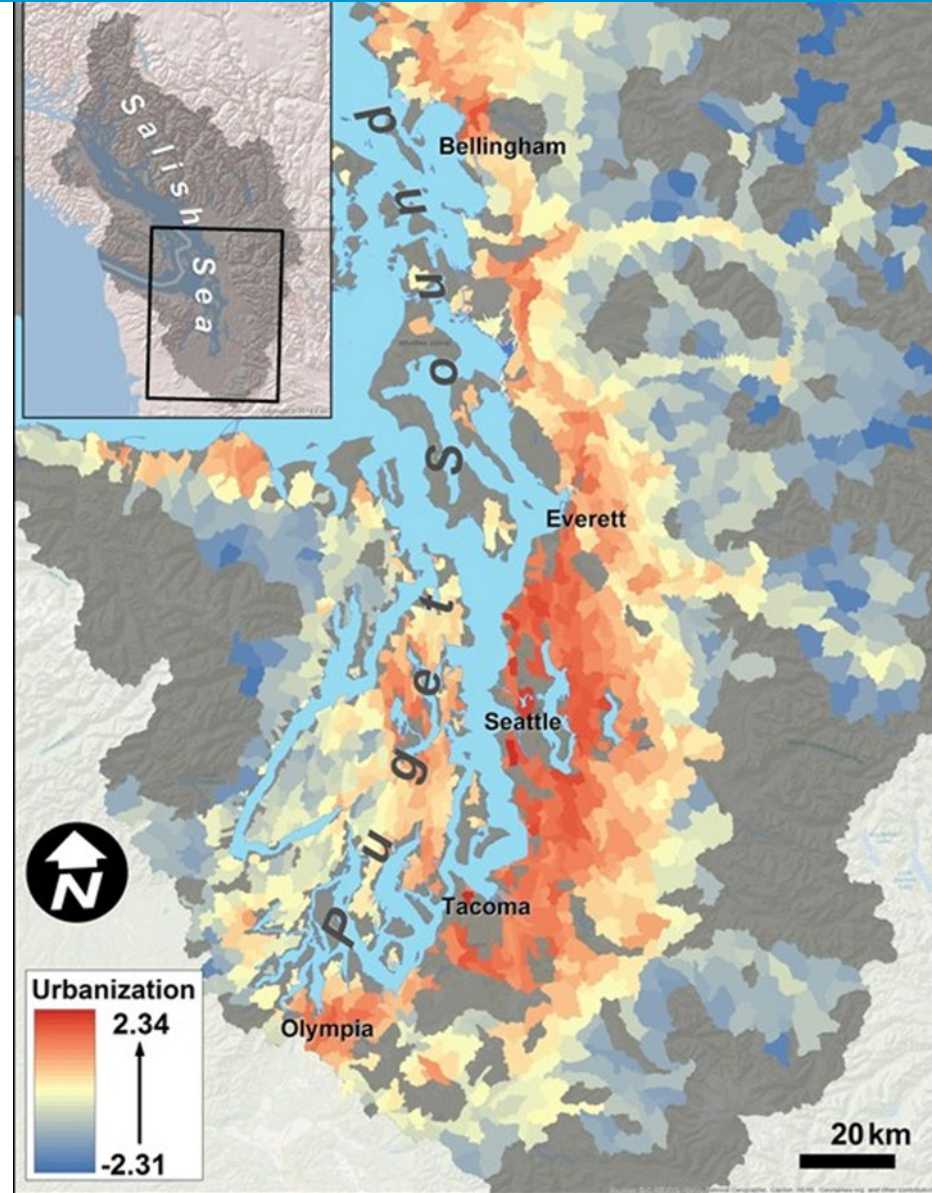
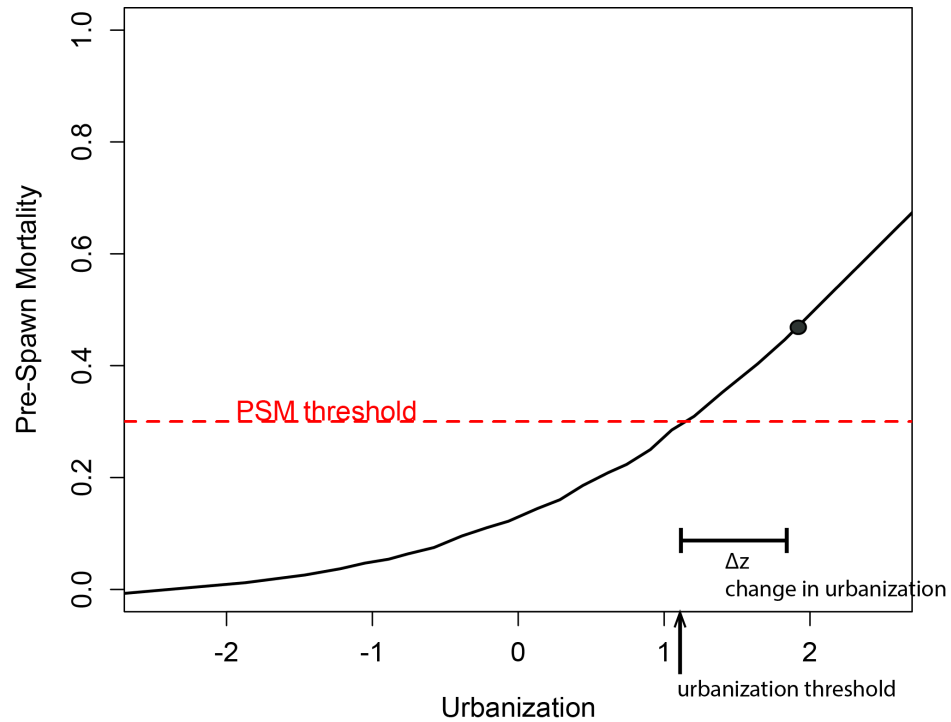
A framework for prioritizing conservation action:



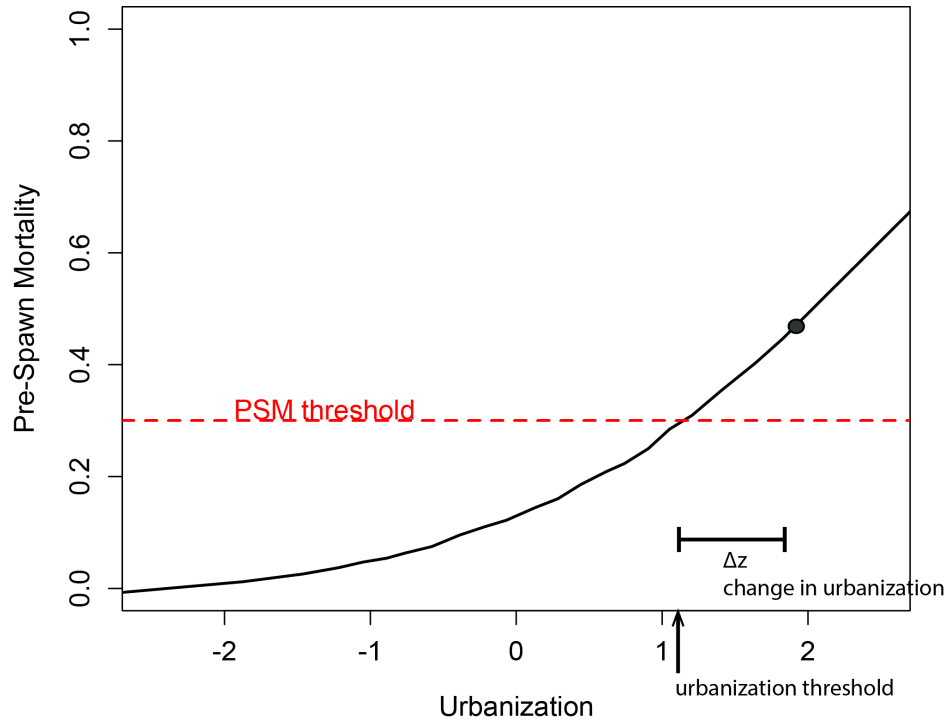
Applying this framework in a data-limited environment



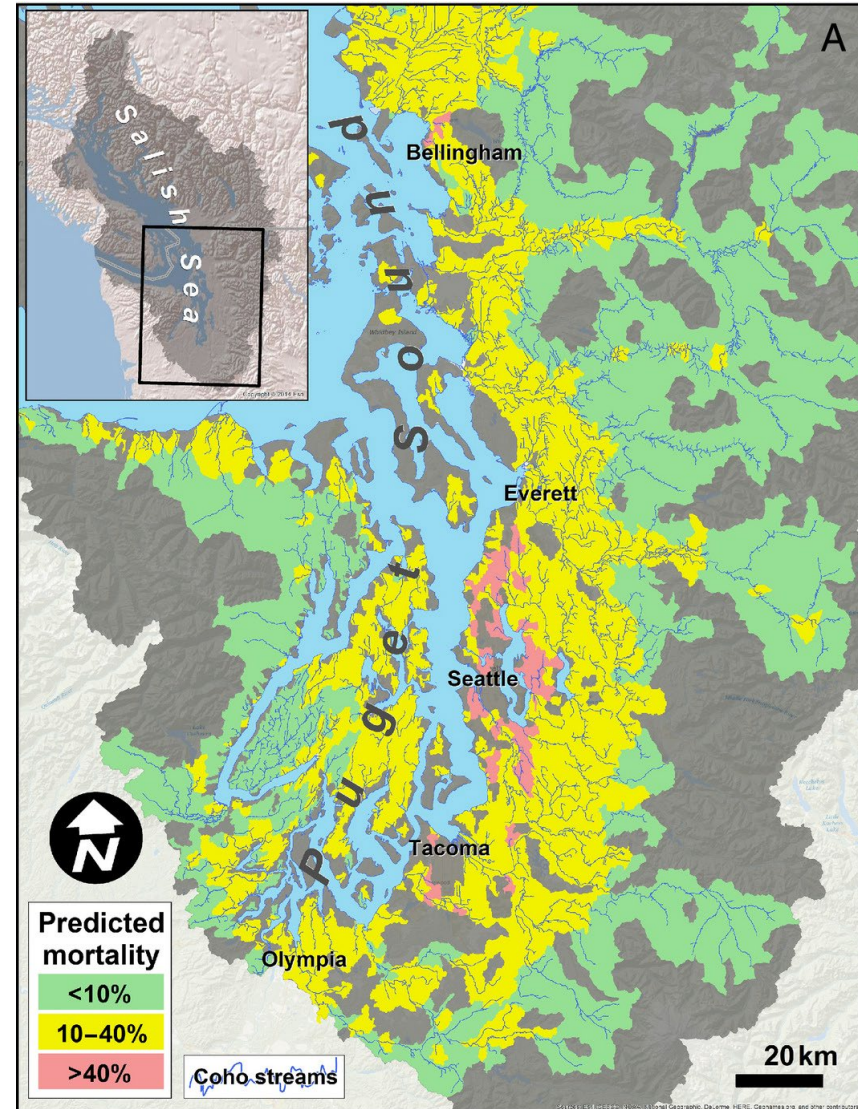
Applying this framework in a data-limited environment



Applying this framework in a data-limited environment

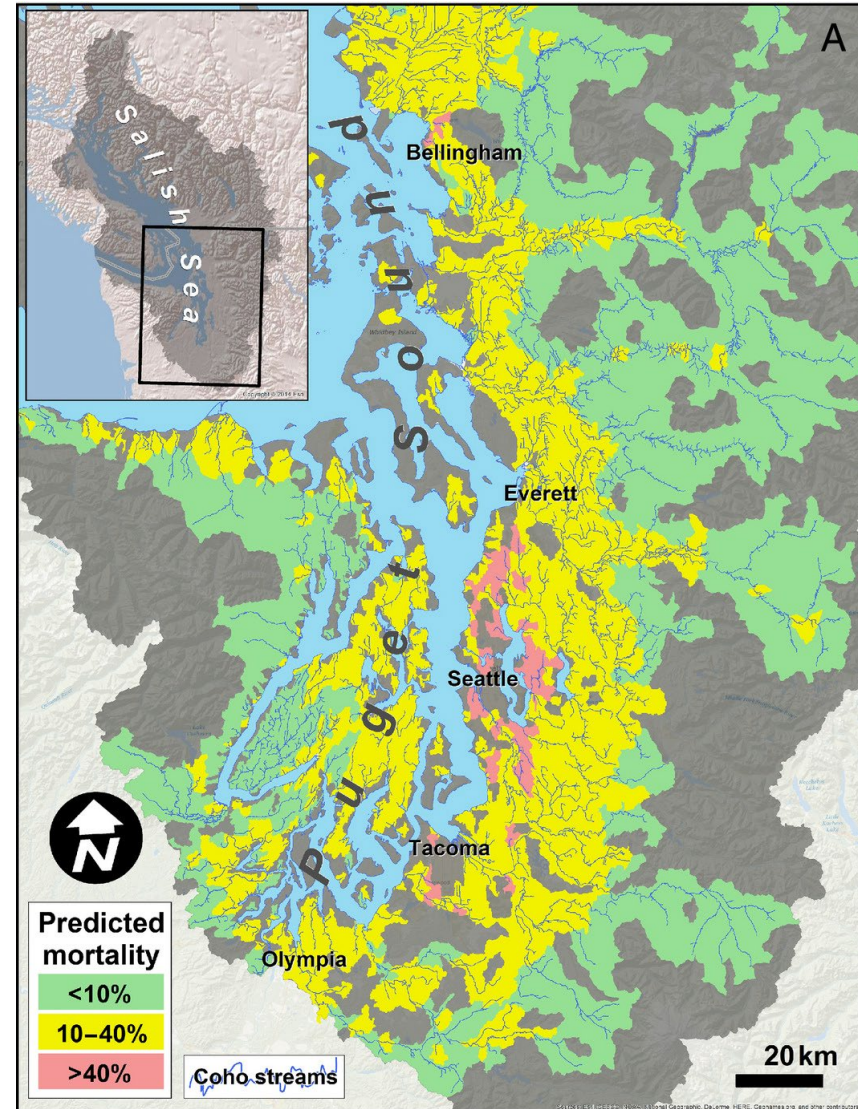
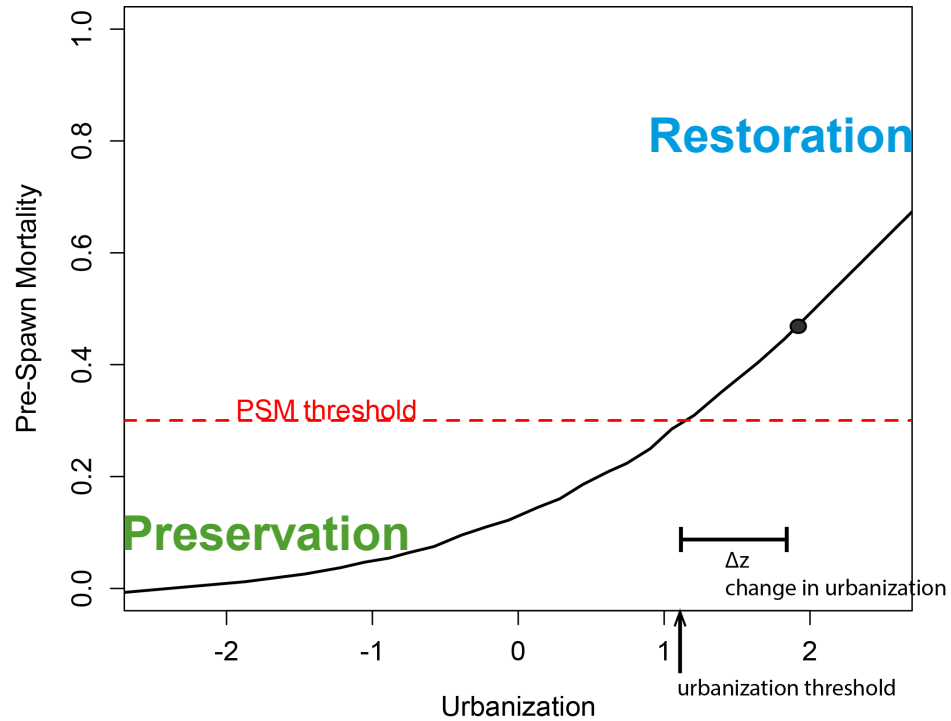


Sprongberg et al 2011:
PSM rates of 30%= 70 years average time to extinction



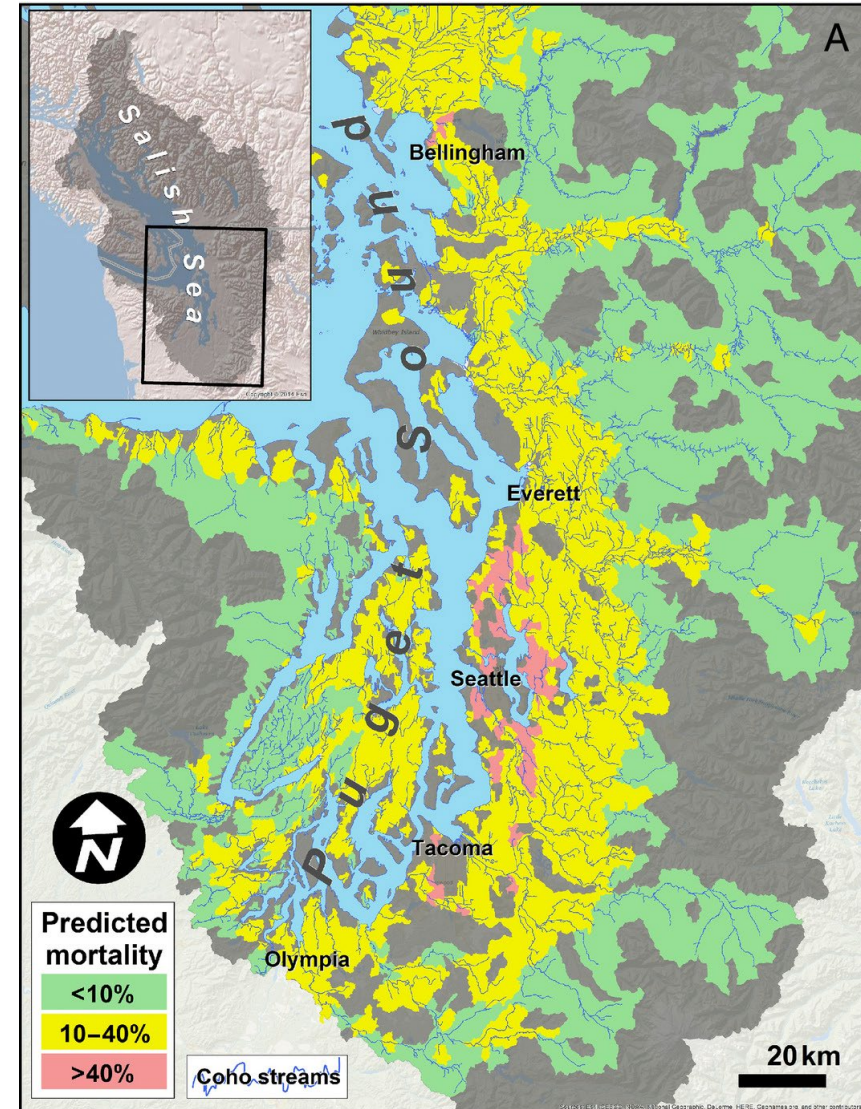
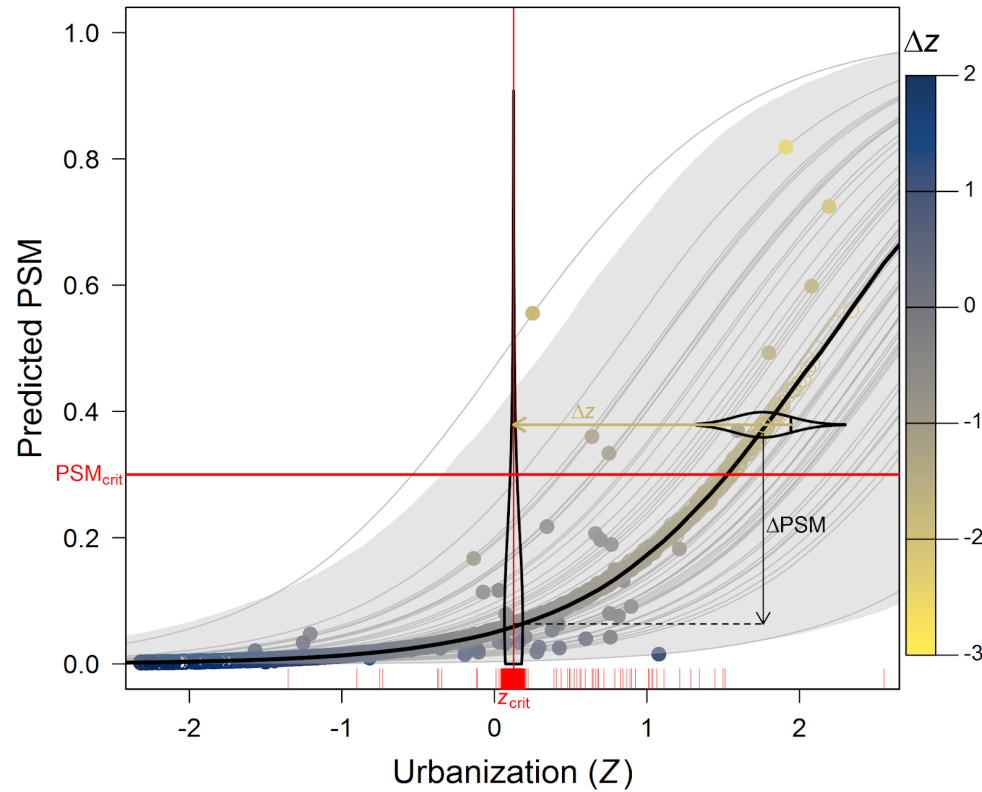
Feist et al 2017

Applying this framework in a data-limited environment



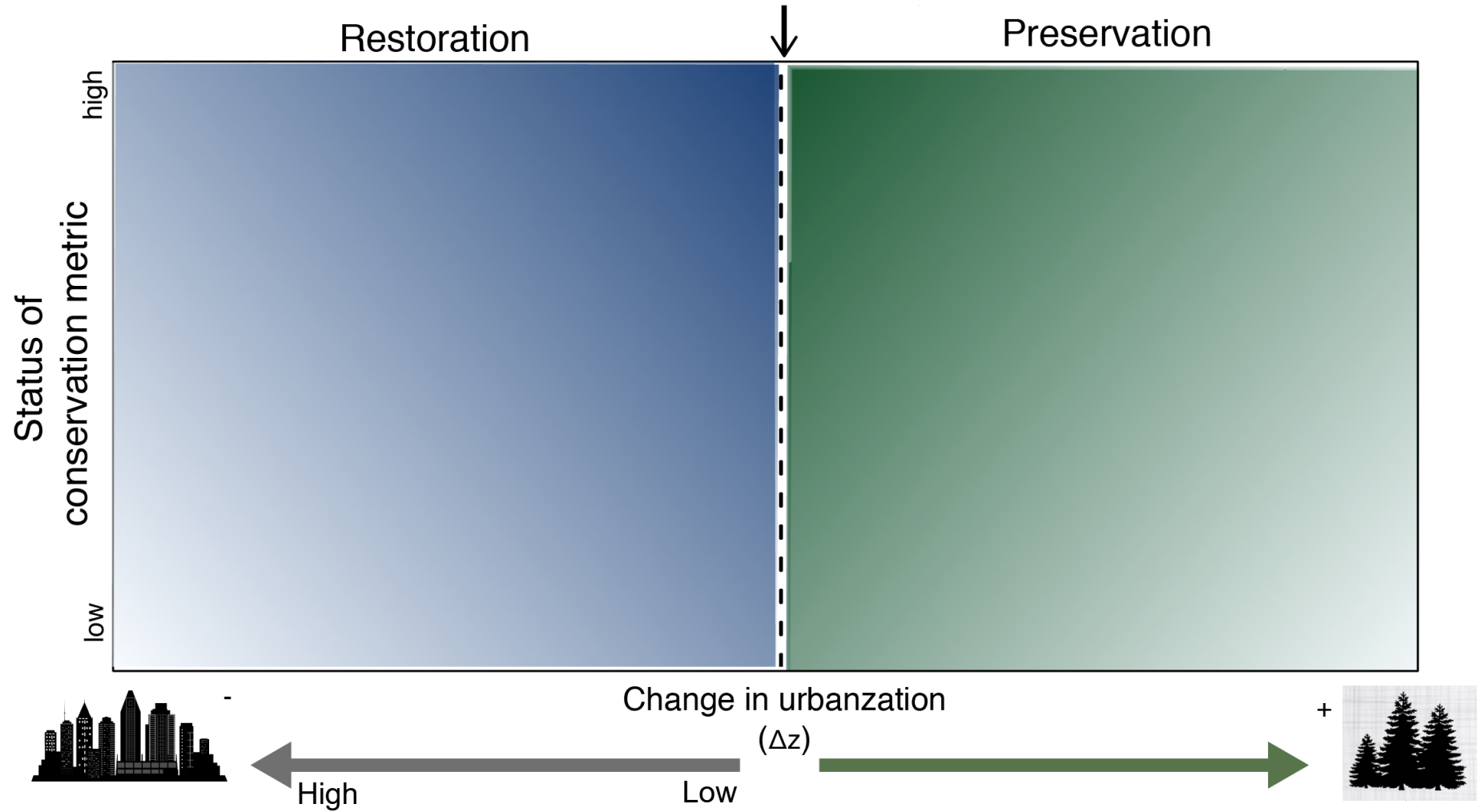
Feist et al 2017

Applying this framework in a data-limited environment

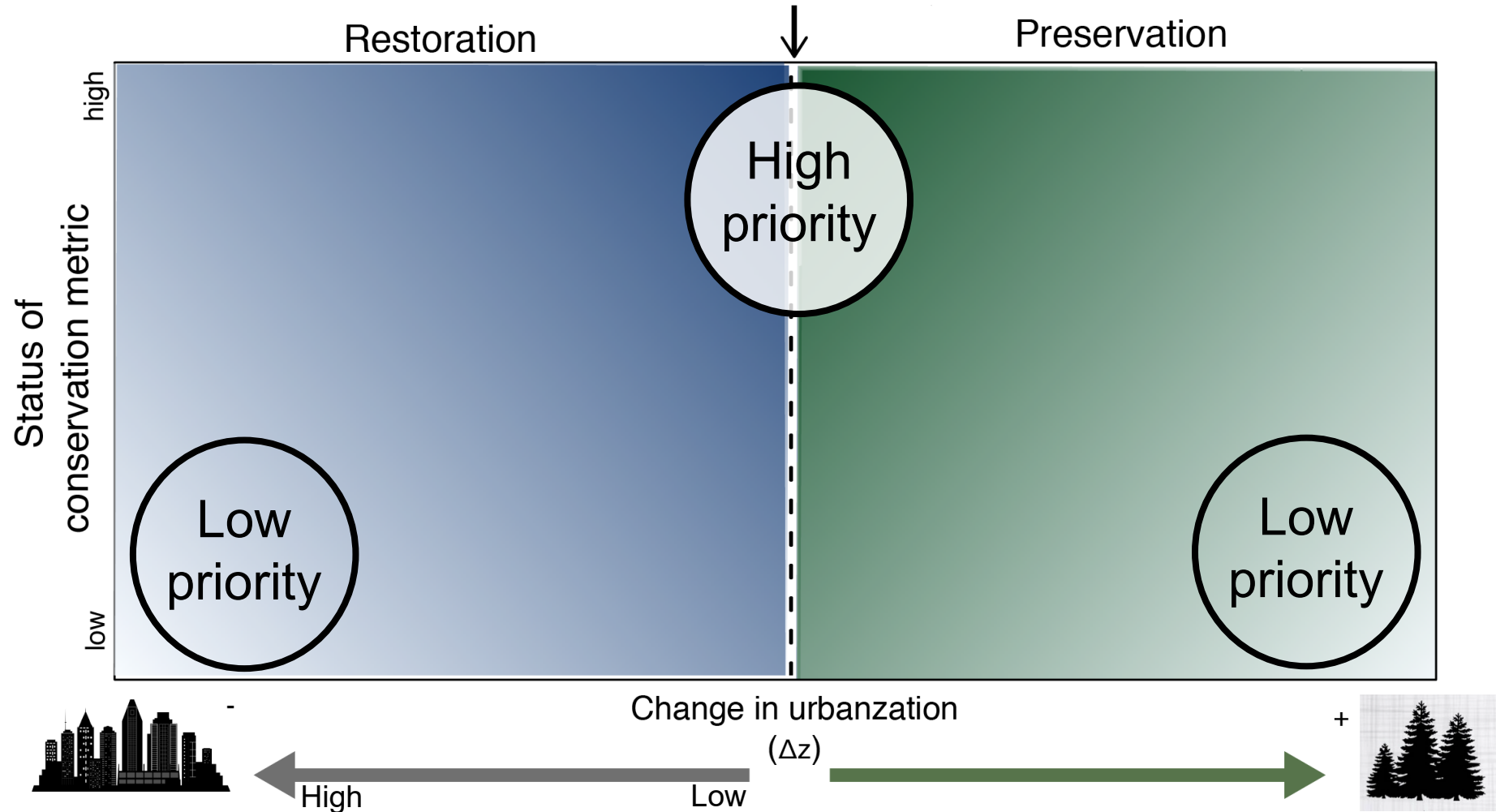


Feist et al 2017

A framework for prioritizing conservation action



A framework for prioritizing conservation action

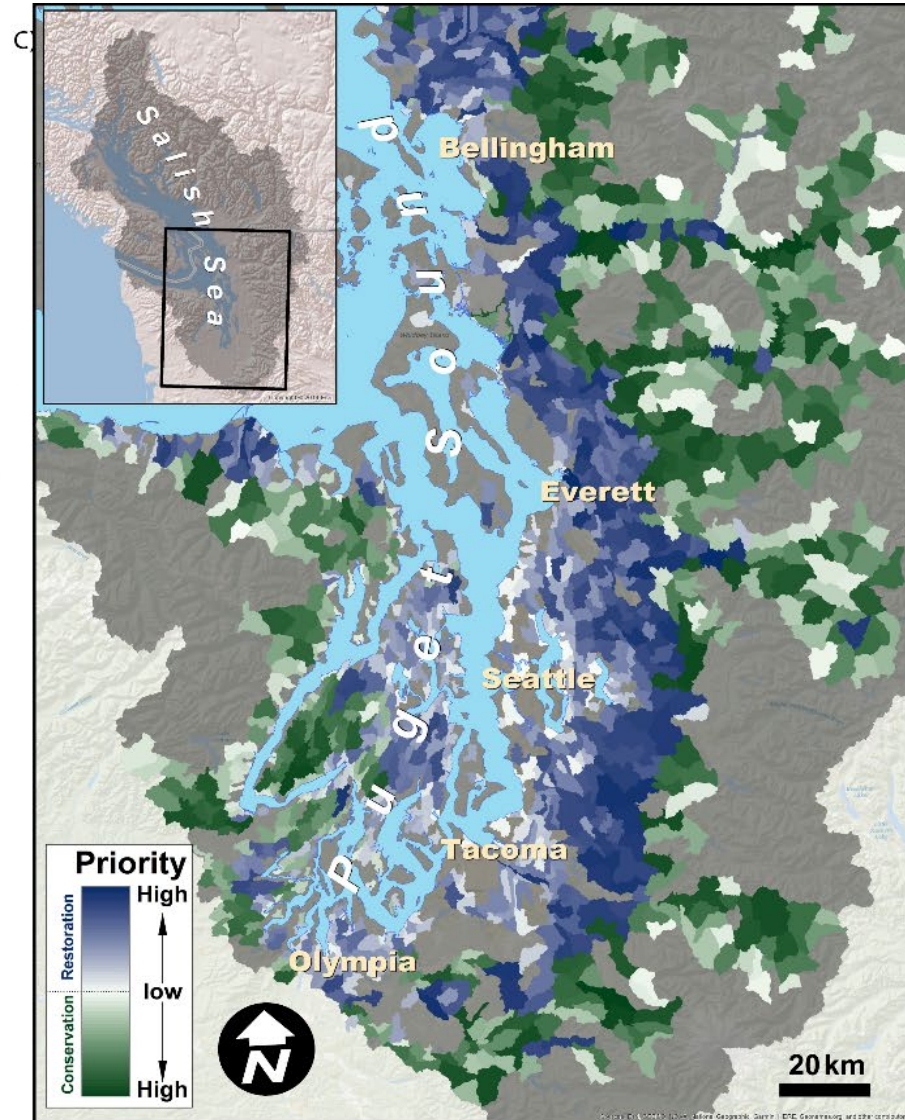
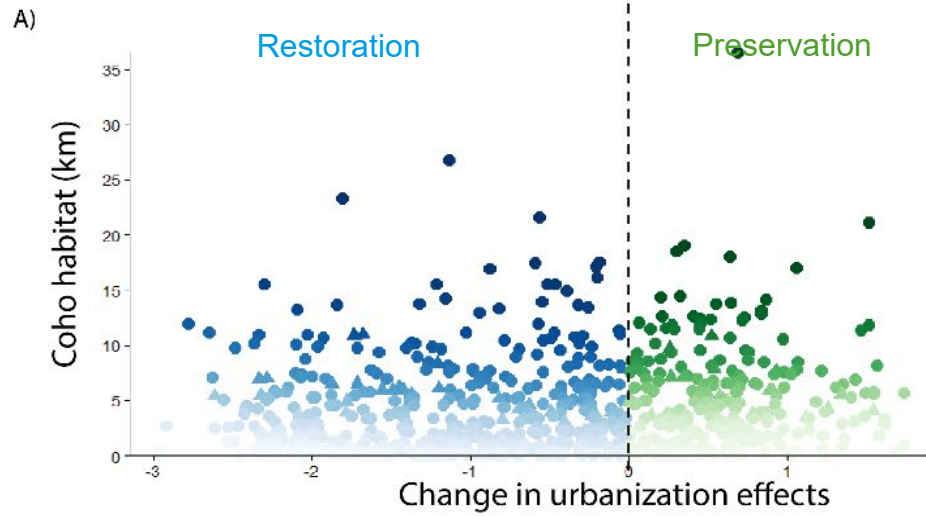


Sub-basins identified as high priority include both conservation and restoration sites

Conservation metric = amount of coho habitat

Sub-basins identified as high priority include both conservation and restoration sites

Conservation metric = amount of coho habitat



Ettinger et al 2021

High priority sub-basins vary, depending on the conservation metric

Conservation metric = amount Chinook habitat

Conservation metric = amount of coho habitat

