

VELMA model green infrastructure applications for reducing 6PPD-quinone concentrations in Puget Sound urban streams

Jonathan Halama², Robert McKane¹, Vivian Phan¹, Allen Brookes¹, Kevin Djang³, Edward Kolodziej⁴, Katherine Peter⁴, Zhenyu Tian⁵

¹ U.S. Environmental Protection Agency, Center for Public Health and Environmental Assessment, Pacific Ecological Systems Division, Corvallis, OR, USA

² Spatial Synergy Solutions, Independence, OR, USA

³ Inoventures LLC, c/o U.S. Environmental Protection Agency, Corvallis, OR, USA

⁴ University of Washington Tacoma, Center for Urban Waters, WA, USA

⁵ Northeastern University College of Science, Boston, MA, USA

Presentation: Green Infrastructure Summit of the Salish Sea, March 25, 2022

We gratefully acknowledge financial support provided by U.S. EPA Region 10 and EPA-ORD's Safe and Sustainable Water Resources Research Program.

Disclaimer: The views expressed here are those of the author[s] and do not necessarily represent the views or policies of the U.S. EPA.

What's killing the coho?

A decades-long mystery solved

The Seattle Times

Stormwater pollution in Puget Sound streams killing coho before they can spawn

October 18, 2017



1 of 2 | Coho salmon, including females full of eggs, are dying before they can spawn in Puget Sound streams polluted with stormwater runoff. (NOAA Fisheries)

Science Tian et al. 2021

REPORTS

6PPD-quinone

Cite as: Z. Tian *et al.*, *Science* 10.1126/science.abd6951 (2020).

A ubiquitous tire rubber-derived chemical induces acute mortality in coho salmon

Zhenyu Tian^{1,2}, Haoqi Zhao³, Katherine T. Peter^{1,2}, Melissa Gonzalez^{1,2}, Jill Wetzel⁴, Christopher Wu^{1,2}, Ximin Hu³, Jasmine Prat⁴, Emma Mudrock⁴, Rachel Hettinger^{1,2}, Allan E. Cortina^{1,2}, Rajshree Ghosh Biswas⁵, Flávio Vinicius Crizóstomo Kock⁵, Ronald Soong⁵, Amy Jenne⁵, Bowen Du⁶, Fan Hou³, Huan He³, Rachel Lundeen^{1,2}, Alicia Gilbreath⁷, Rebecca Sutton⁷, Nathaniel L. Scholz⁸, Jay W. Davis⁹, Michael C. Dodd³, Andre Simpson⁵, Jenifer K. McIntyre⁴, Edward P. Kolodziej^{1,2,3*}

VELMA Ecohydrology Model

- **Estimate:** Contaminant Fate and Transport in Urban and Rural Watersheds: Organics, Nutrients, Metals
- **Inform:** Green Infrastructure Options for Reducing Toxic Chemicals in Stormwater
- **Support:** Clean Water Act, Endangered Species Act, National Pollutant Discharge Elimination System, H.R.4266-Clean Water Through Green Infrastructure Act

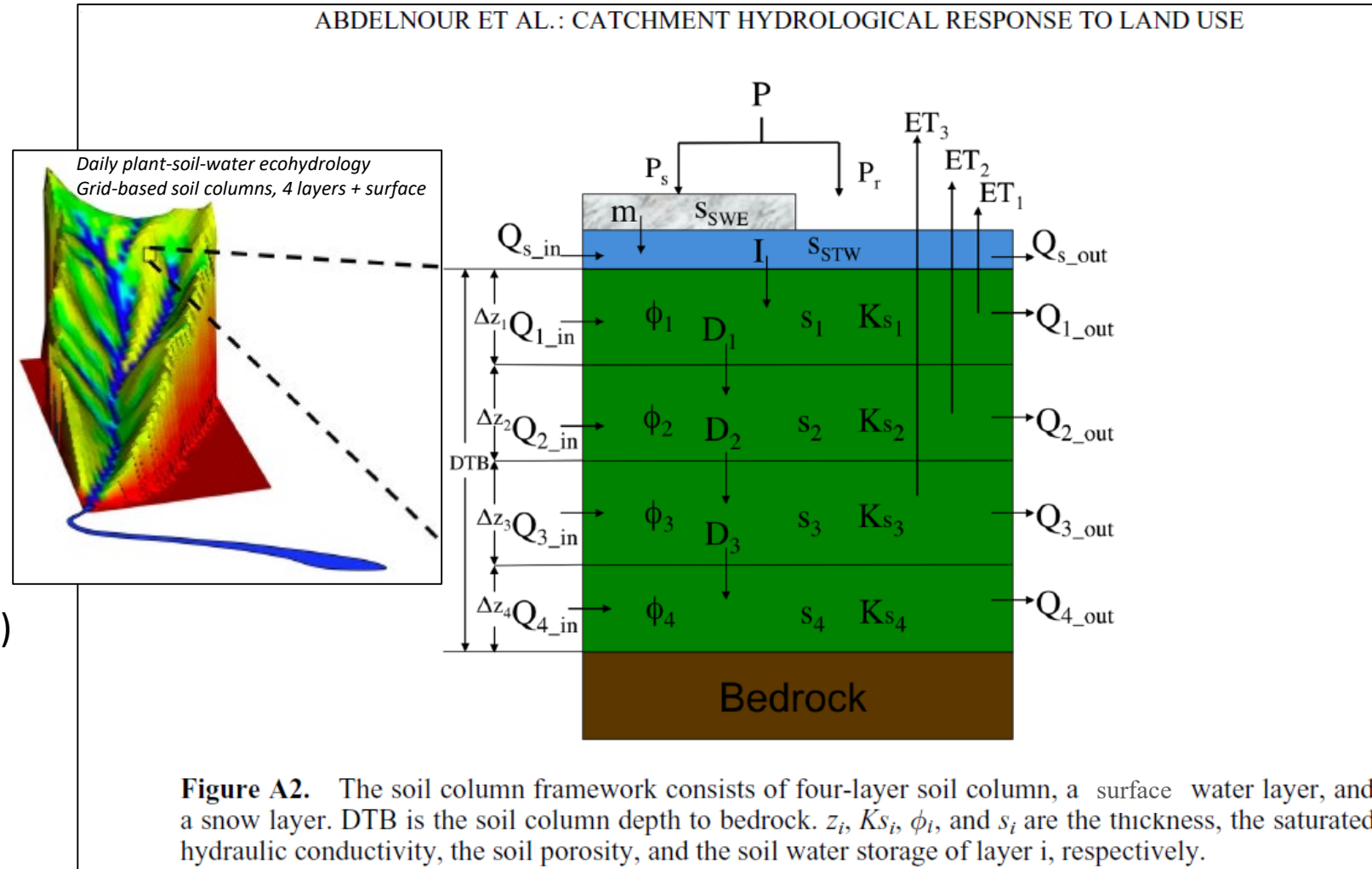


Bioswale
Longfellow Creek Watershed
West Seattle, WA

VELMA: Grid-based Urban Fate and Transport

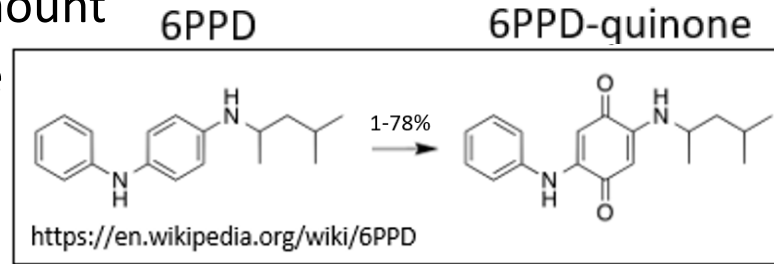
Water & Chemical Transport

- Daily precipitation and runoff
- Surface layer perviousness (0-1)
- Stormwater System
 - Spatially-explicit roads, curbs, drains, pipes
 - Transfers: curb to drain to pipe to stream...
- Soil matrix (5 or 10-meter grid)
 - Vertical and lateral flow (see figure)
 - Contaminant & nutrient transport, decomposition, sorption, desorption, aqueous/solid phase mass balance



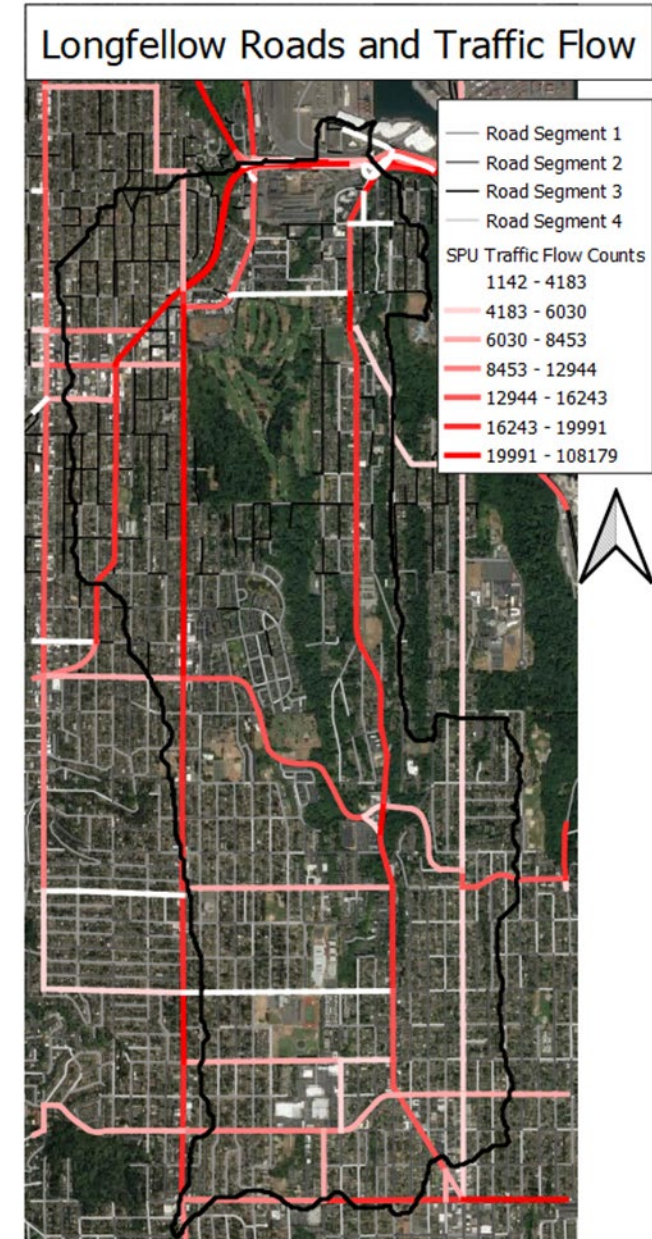
VELMA 6PPD calibration setup

- 6PPD deposition, degradation to 6PPD-quinone
 - 6PPD location, timing, amount
 - Fraction to 6PPD-quinone



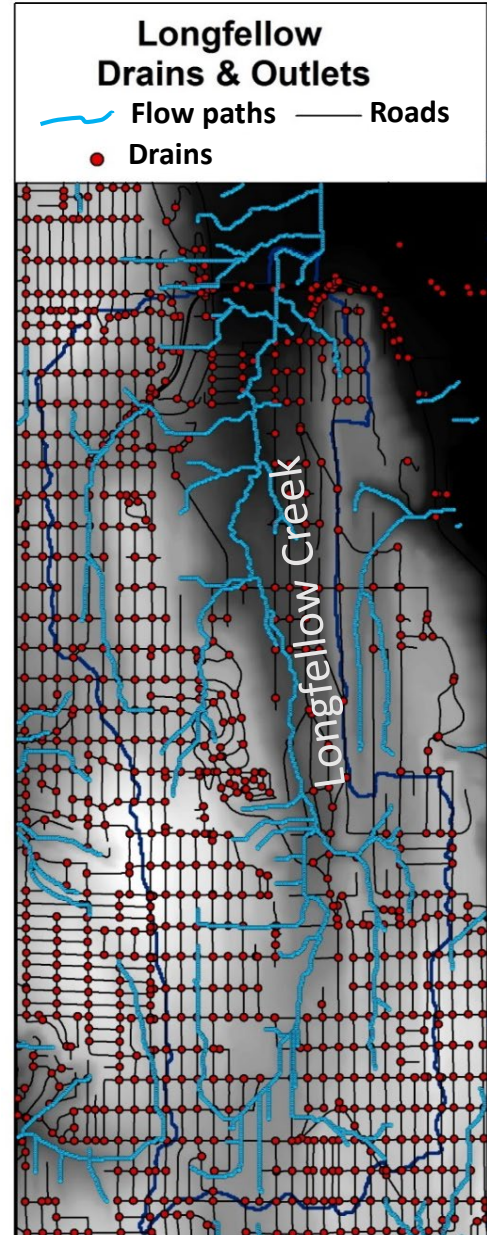
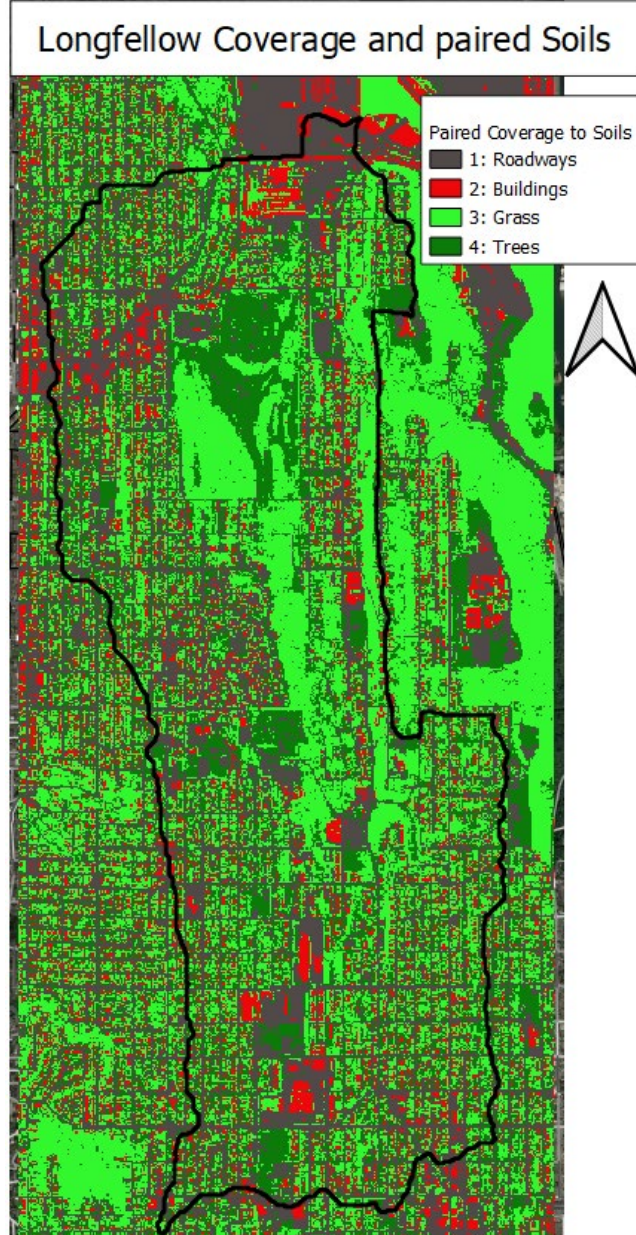
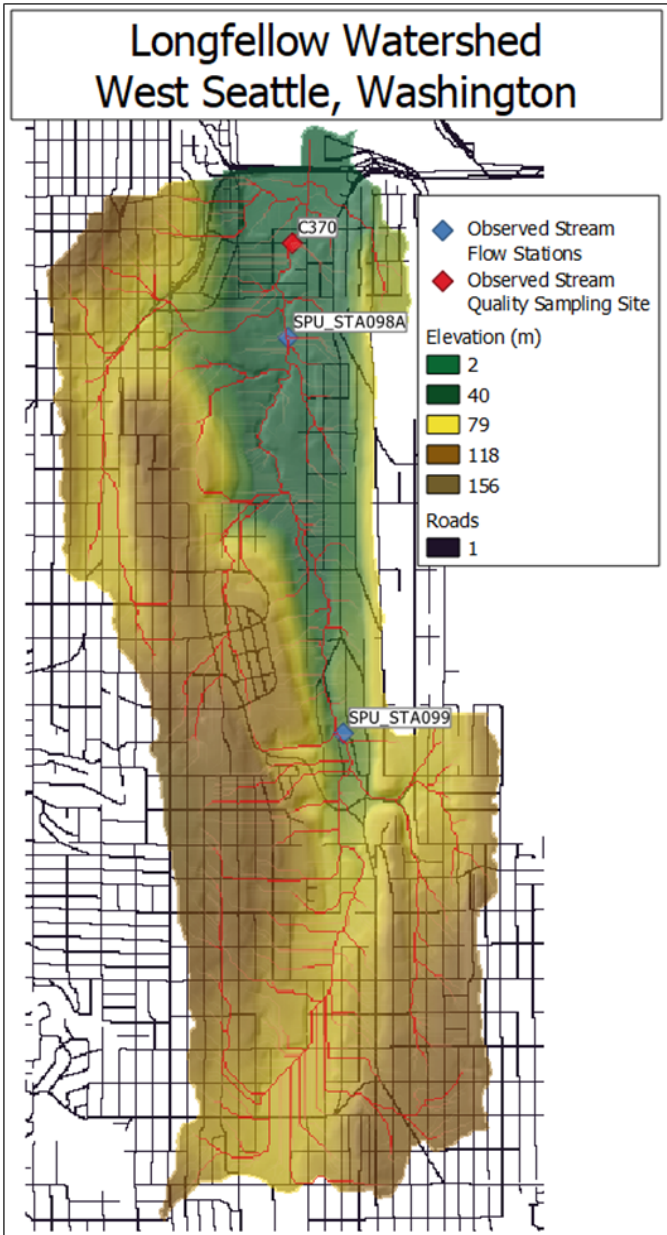
- Parameters: 6PPD fate and transport

Group	Item	Parameter		
contaminant	RoadDepo_6PPD	setMolarSolubilityCoefficient	*	0.000158
contaminant	RoadDepo_6PPD	setChemMaxDecay	*	0.2207475
contaminant	RoadDepo_6PPD	logKocSlope		NA
contaminant	RoadDepo_6PPD	uniqueSequenceId		1
contaminant	RoadDepo_6PPD	uniqueId		1
contaminant	RoadDepo_6PPD	Koc	*	11000
contaminant	RoadDepo_6PPD	logKocIntercept		NA
contaminant	RoadDepo_6PPD	setMolarMass	*	268.404
contaminant	RoadDepo_6PPD	logKow	*	3.6
contaminant	RoadDepo_6PPD	setDecompositionFactorMode		NONE
contaminant	RoadDepo_6PPD	modelClass		OrganicContaminantModel
contaminant	RoadDepo_6PPD	uniqueName		RoadDepo_6PPD
contaminant	RoadDepo_6PPD	directKocSpecification		true



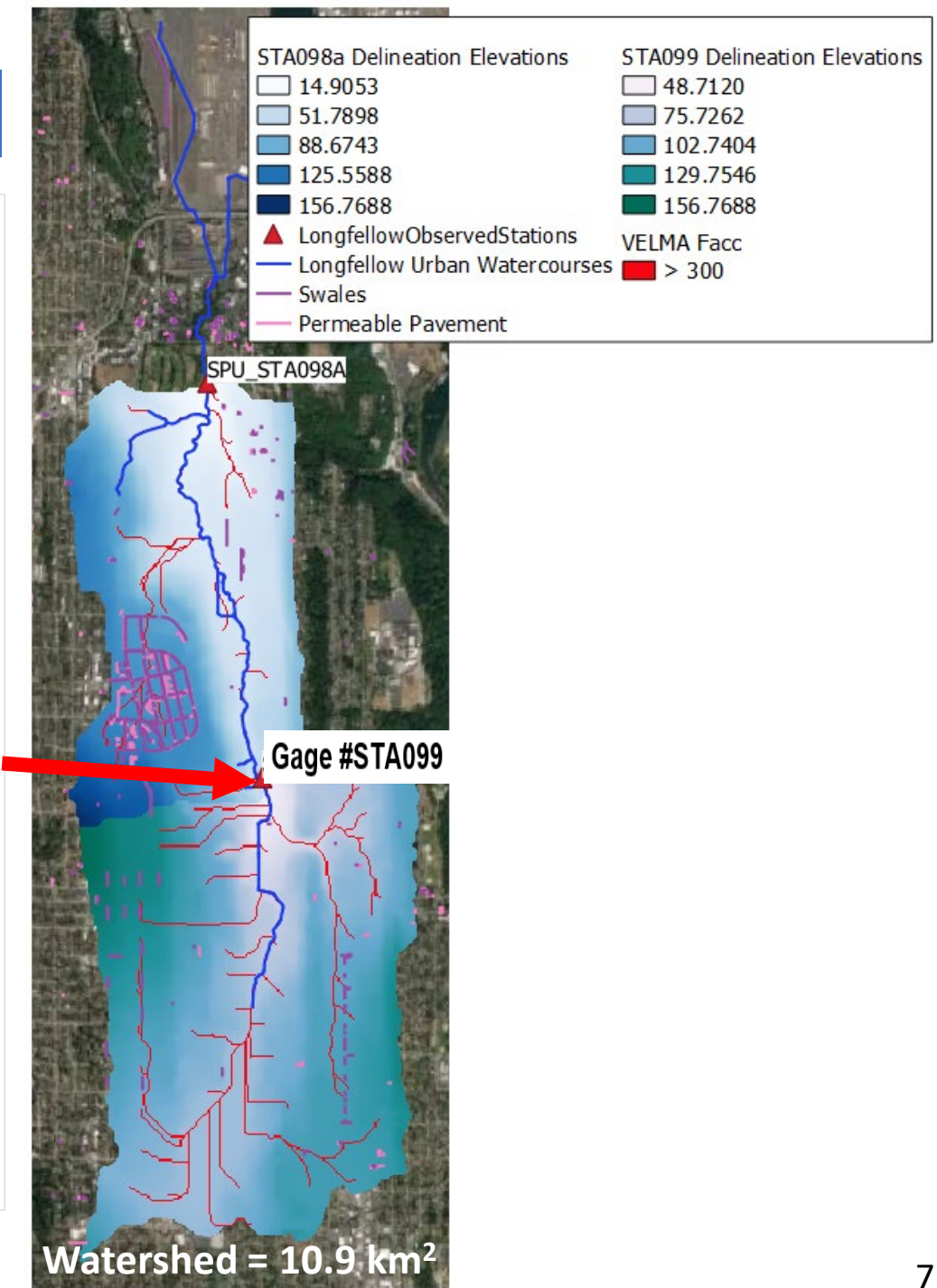
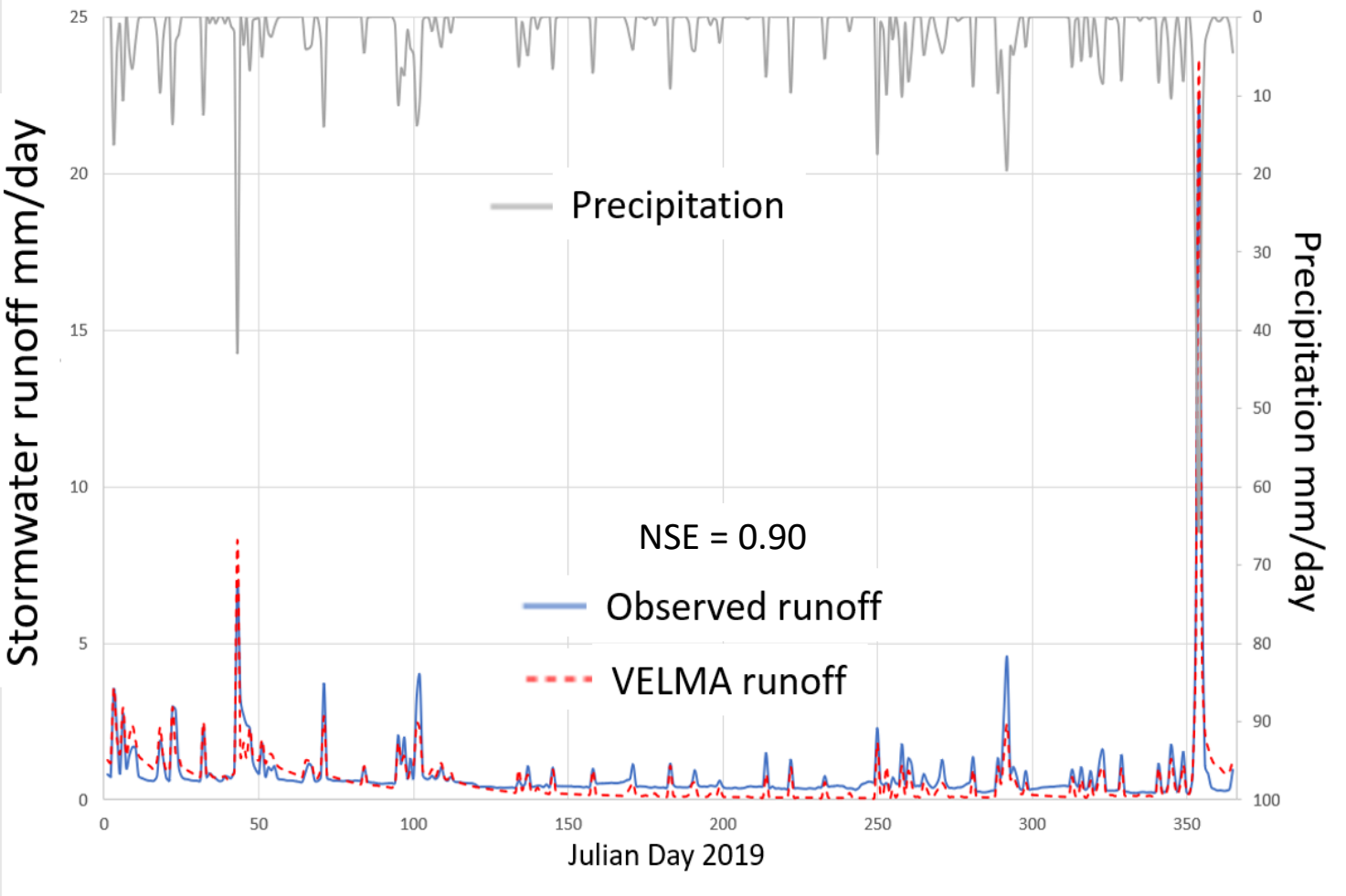
*From EPA CompTox Database <https://comptox.epa.gov/dashboard>

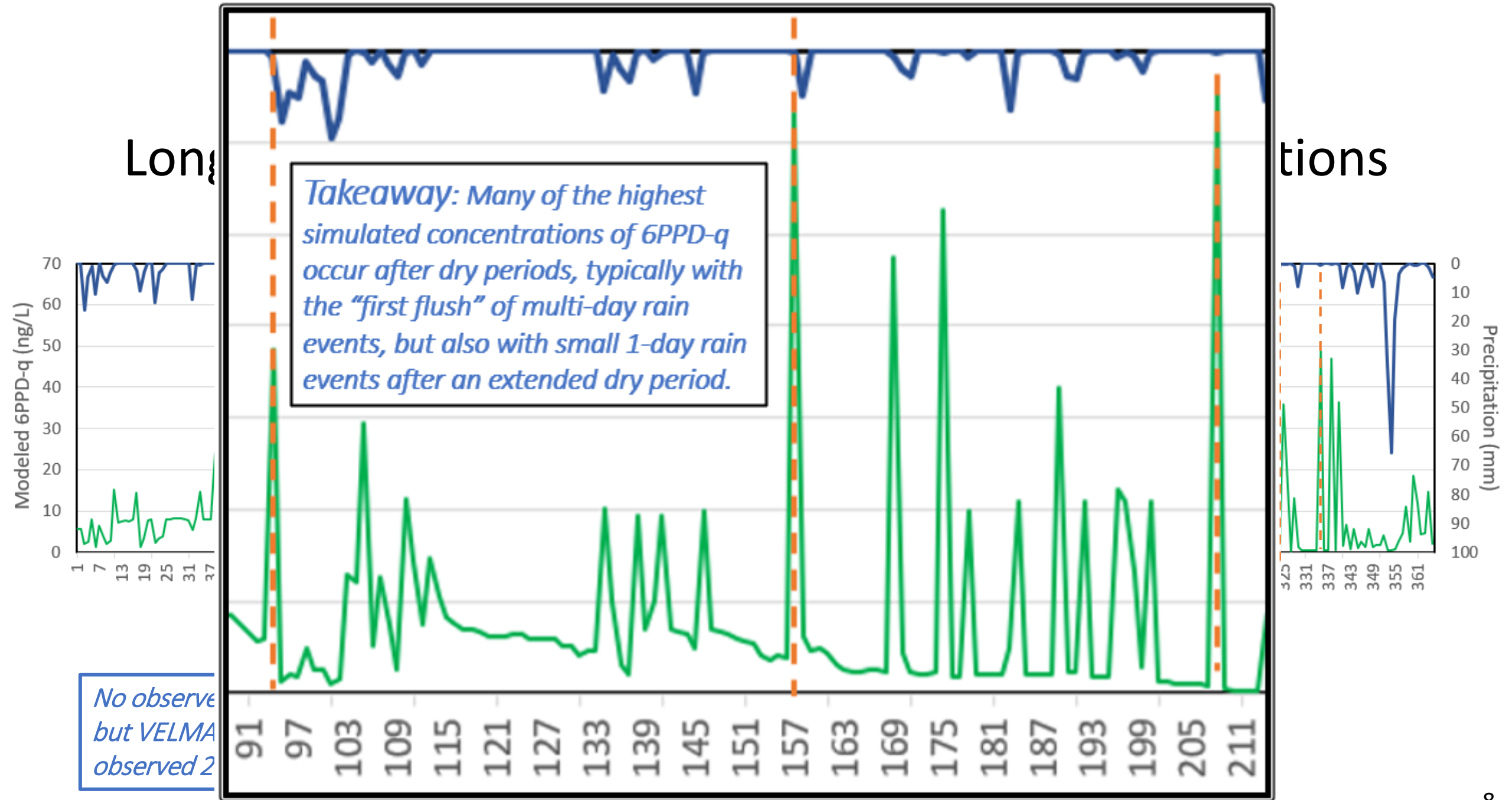
VELMA Urban Setup: Major Spatial Components



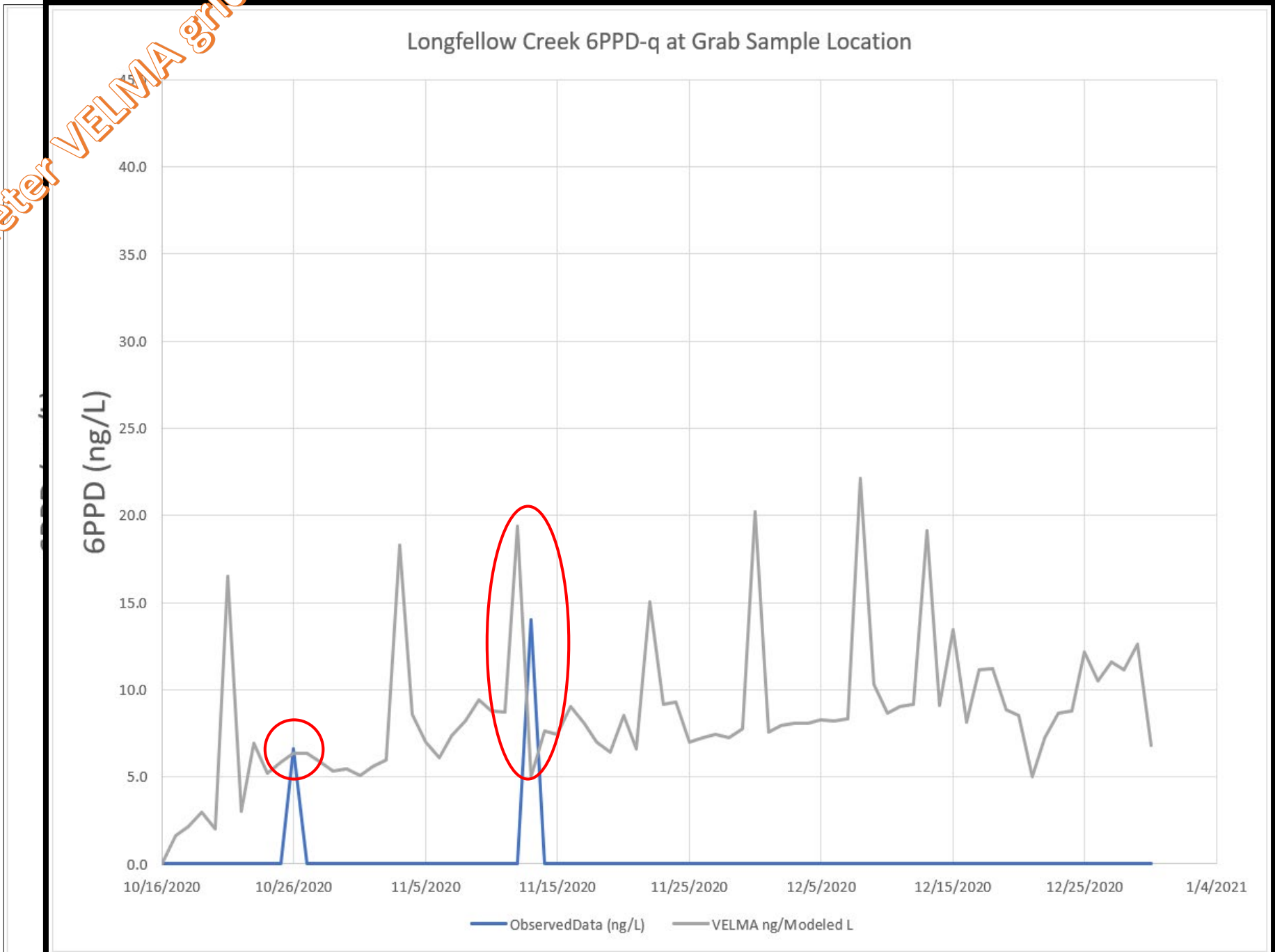
VELMA urban stormwater runoff performance tests

Longfellow Creek Stream **Gage #STA099**, Year = 2019





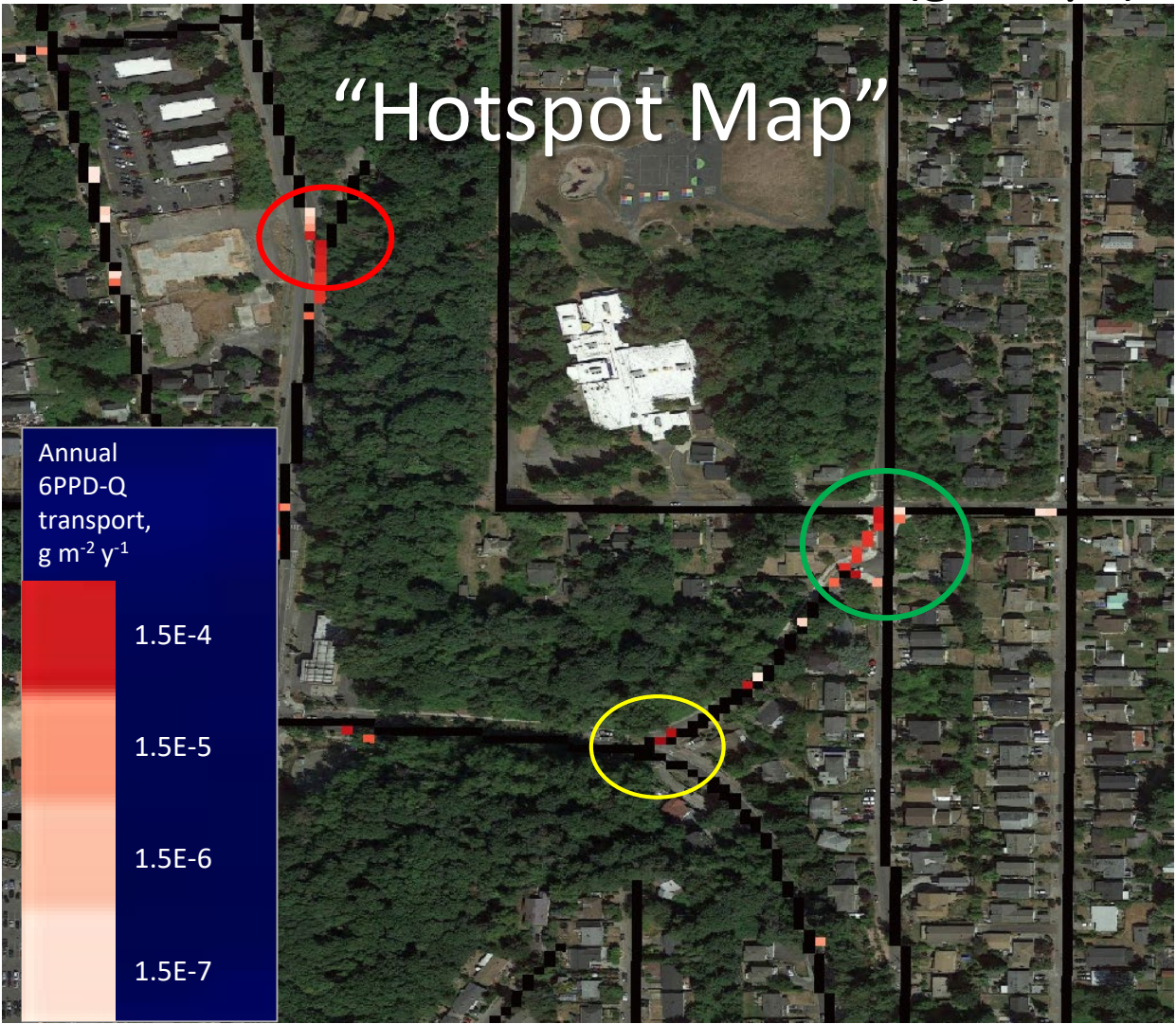
UPDATE: 5-meter VELMA grid



Daily 6PPD-Q Surface Transfers ($\text{g m}^{-2} \text{d}^{-1}$)



2020 Annual 6PPD-Q Surface Transfers ($\text{g m}^{-2} \text{y}^{-1}$)



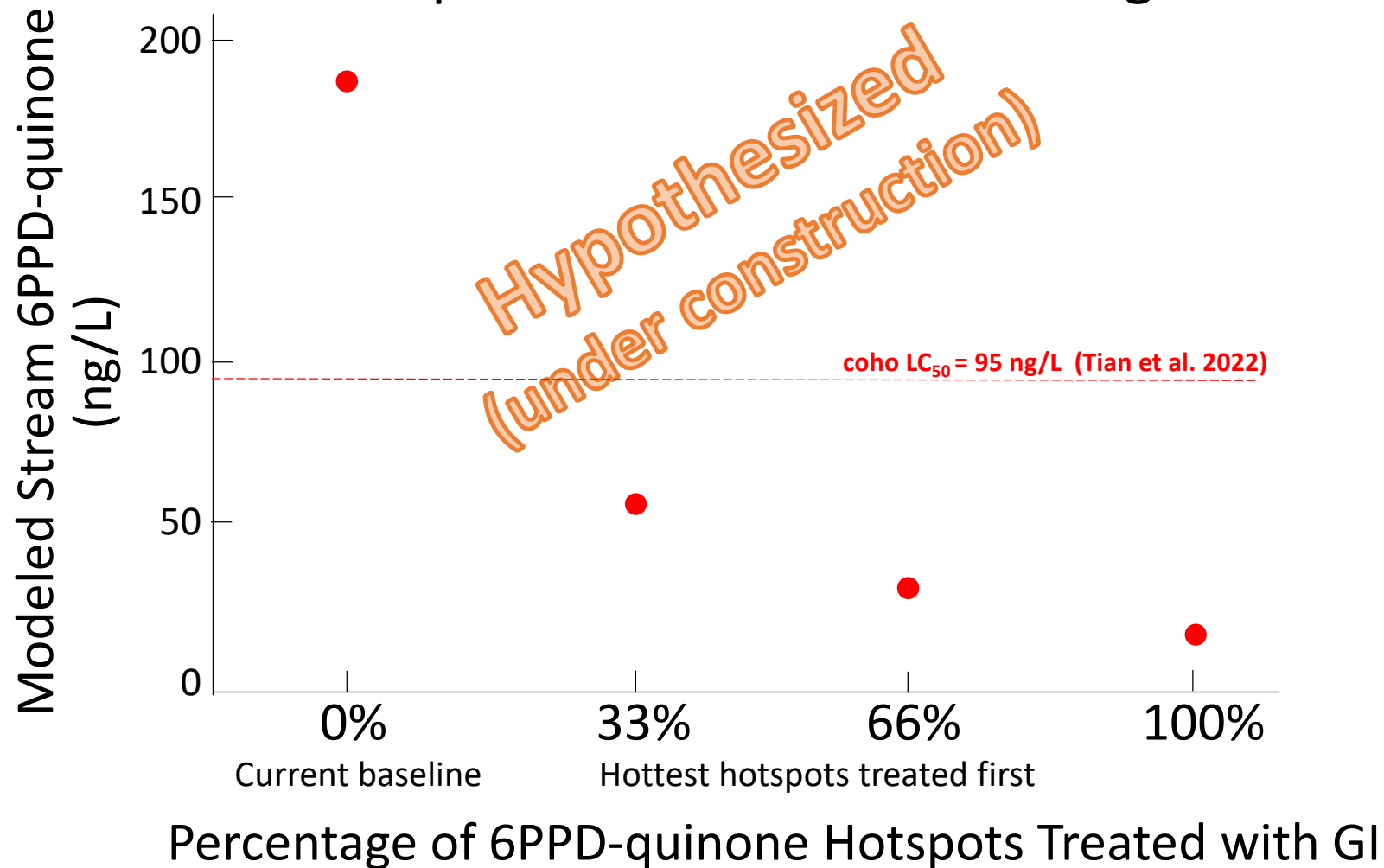
NOTE: 6PPD-Q Annual sums are ~100x larger than daily values

Simulated effects of hotspot GI treatments on stream 6PPD-quinone ng/L

2020 Oct-Nov Peak 6PPD-Q Stream Conc.

versus

Hotspot GI Treatment Percentage





Summary

- **Model performance:** Though modeled stream 6PPD-Q concentrations are consistent with limited available stream data, confident use of VELMA for informing GI best practices awaits more extensive performance tests.
- **New findings:** VELMA can identify 6PPD-Q hotspots at fine scales (5m) for prioritizing watershed-scale GI treatment placement, type, and amounts required to lower coho mortality.
- **Next steps:**
 - Complete Longfellow Creek VELMA hotspot analysis (slide 10)
 - More testing in more urban watersheds: Miller, Thornton, Pipers, Taylor (high coho prespawn mortality in all).
 - Coordination & integration of data and modeling across multiple scales (plots → whole watershed).
 - Progress on these steps will continue to depend on collaboration of modelers with empirical researchers, community and tribal watershed managers, and state and federal decision makers.
- **Important unanswered modeling questions/uncertainties:**
 - Spatial and temporal 6PPD deposition patterns?
 - 6PPD rates of conversion to 6PPD-Q?
 - 6PPD-Q half-life?
 - Optimal GI soil treatments to maximize contaminant retention and decay?

Project Collaborators – Thank you!

- EPA-ORD VELMA Team: Jonathan Halama (Spatial Synergy Solutions), Bob McKane, Vivian Phan, Allen Brookes, Kevin Djang (Inoventures)
- Other EPA-ORD: Paul Mayer, Brenda Rashleigh, Jim Markwiese, Matt Hopton, many others
- EPA Region 10: Angela Adams, Rob Elleman, Catherine Gockel, Mark Jankowski, Lisa Chang, Michael Rylko, Rochelle Labiosa, Peter Murchie
- University of WA Tacoma Center for Urban Waters: Ed Kolodziej, Kathy Peter, Zhenyu Tian (Northeastern University), Joel Baker, Tessa Francis, Tarang Khangaonkar (PNNL)
- State of WA: Karen Dinicola, Rhea Smith, Brandi Lubliner (Ecology), Scott Redman (PSP)
- King County: Matt Goehring et al.
- City of Seattle: Catherine Wendland et al.
- City of Burien: Dan O’Brien, Paige Morris
- SeaTac International Airport: Dan Smith
- Port of Seattle: Josh Feigin, Sarah Cox
- City of Normandy Park: Amanda Leon