

# Connor Creek Implementation Team

## Flood Control Zone District Considerations

Grays Harbor County

Commissioner Vickie Raines

4-09-2024 (2:15 PM to 3:00 PM)

**-- Implementation Team --**

Stan Sturgeon

Vicki Hutton

Stan Hutton

Michelle Wiley

Gary Clarke



**SBGH-Partners**

# Today's Presentation/Discussion

- A. Status of 1996 FCZD reported at Last Community Meeting (3-21-2024)
- B. Implementation Group's Current Perspective on Preferred Type of "Entity"
- C. Options and Next Steps

Scott Boettcher

SBGH-Partners

360/480-6600

[scottb@sbgh-partners.com](mailto:scottb@sbgh-partners.com)



# Connor Creek Flooding Problem Statement

*Updated Problem statement (3-21-2024 Community Meeting). . .*

*“Connor Creek presents a chronic, complex, and historically unaddressed flooding problem adversely affecting North Beach residents, visitors, businesses, and emergency responders alike that has steadily gotten worse since about 1987.”*



# A. Status of 1996 FCZD

- ✓ BOCC established local FCZD in July 1996 in response to a local petition.
- ✓ 1996 FCZD served a corridor immediately north of the Connor Creek watershed focused on Connor Creek migration.
- ✓ 1996 FCZD was “active” up until early 2000s (2002??, 2003??).
- ✓ 1996 FCZD does not appear to have been dissolved and is assumed to still be “on-the-books.”



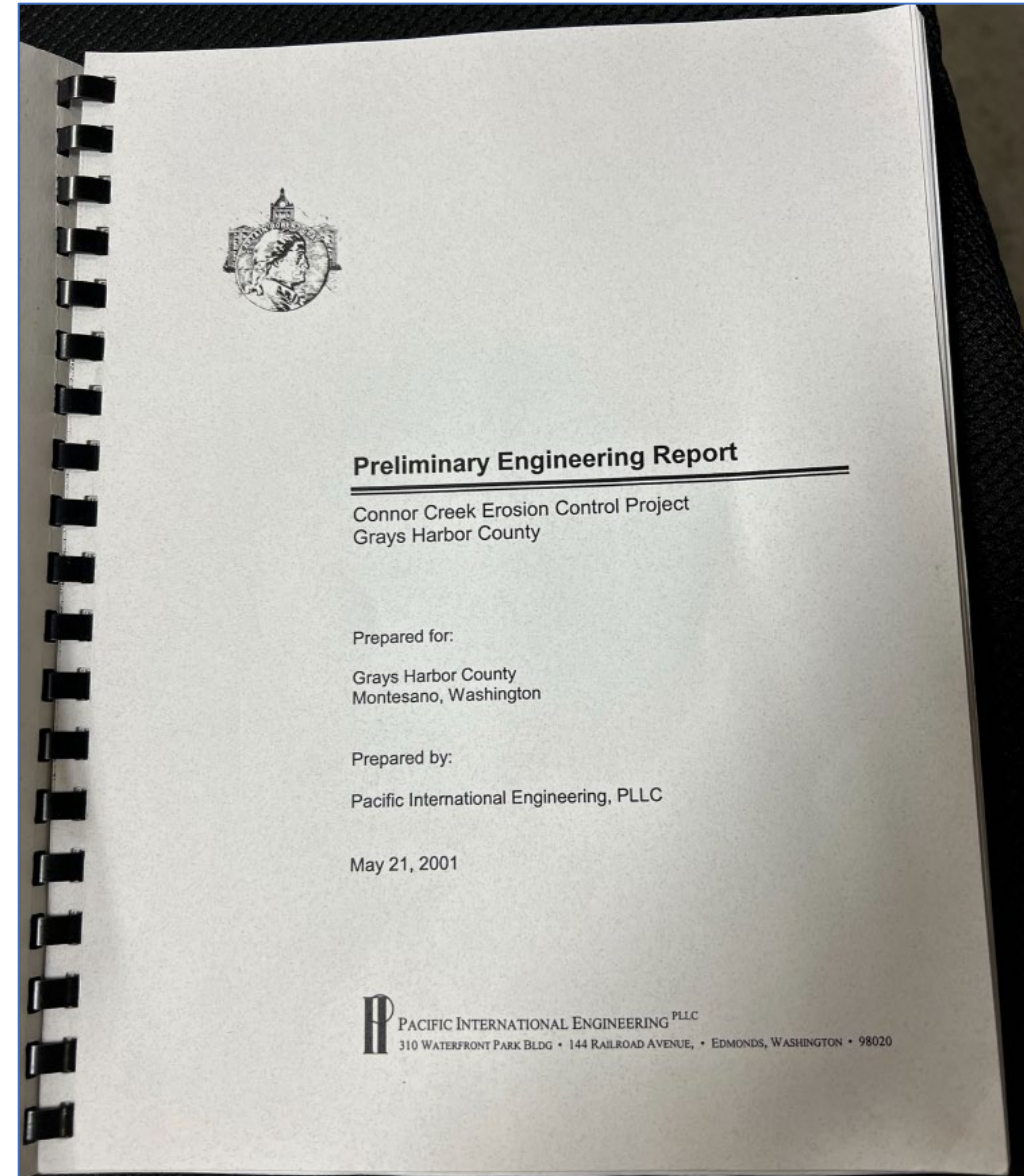
# A1. Original Reference

## Executive Summary

In the mid 1990's, residents in the vicinity of the mouth of Connor Creek and its outlet to the Pacific Ocean began to experience dramatic erosion of their properties as the mouth of the creek began to migrate rapidly to north. This area is a rural unincorporated community within Grays Harbor County lying midway between Ocean City and Copalis Beach. Historically the mouth had meandered north and south dependent on the time of year and weather conditions, but stayed primarily in a general area of about one-fourth to one-half mile in width. Some man-made interventions to the south created a condition that eliminated capability for a southern meander, which may have precipitated the steady migration of the creek mouth northward. Whatever the cause, it began to erode substantial amounts of property and to sever access to the ocean, first private, then public access.

In 1997, the community requested assistance from the County. In response, the County formed a flood control zone district and commissioned a study and analysis to determine if anything could be done to correct this problem. An initial analysis was completed by the County and a proposal was developed to relocate the mouth of the creek to its historical location. At the time of this work, the mouth had migrated approximately one and one-half miles north and was showing no signs of stopping. Today the mouth is approximately two miles north of the historic location and still moving. The County approached the resource agencies in the initial effort, but the agencies took the position that this was a natural phenomenon and estimated that it would most likely not continue and would cause little to no adverse affect. The County and District attempted to answer agency questions before trying to obtain permits. The Communities resources were exhausted prior to applying for permits.

<https://www.ezview.wa.gov/Portals/2006/Documents/Documents/1997%20FCZD%20Ref%203-21-2024.pdf>





# A2. 1996 Resolution

RESOLUTION NO. 96-60

**RESOLUTION ESTABLISHING A FLOOD CONTROL ZONE DISTRICT**

WHEREAS, the Board of County Commissioners of Grays Harbor County is authorized pursuant to RCW 86.15 *et seq.* to establish a Flood Control Zone District for the purpose of undertaking, operating or maintaining flood control projects or groups of projects; and

WHEREAS, the Board of County Commissioners has received a petition from landowners in the Conner Creek/Copalis Beach area of Grays Harbor County requesting the formation of a Flood Control Zone District in the below described area:

That portion of Sections 16 and 21 lying Westerly of the Copalis river; and, that portion of section 27, 28, 33 and 34, lying Westerly of State Highway 109, including the right-of-way of State Highway, bounded on the west by the Pacific Ocean, and, lying North of the Westerly extension of Chabot County Road all situated in Grays Harbor County, State of Washington. See attached map A.

WHEREAS, the landowners' petition has been certified as meeting the requirements of RCW 86.15.100 by the County Auditor's office; and

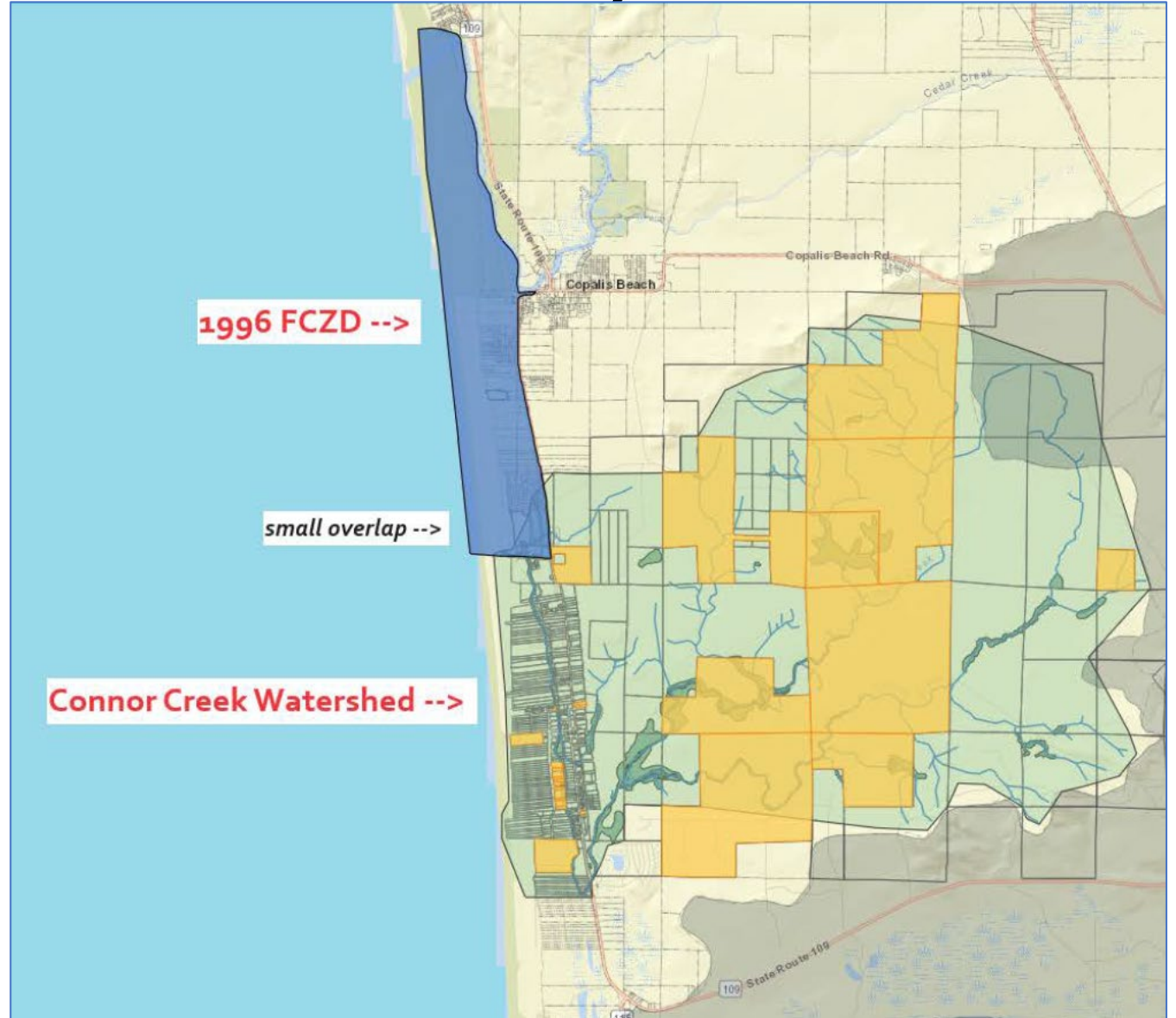
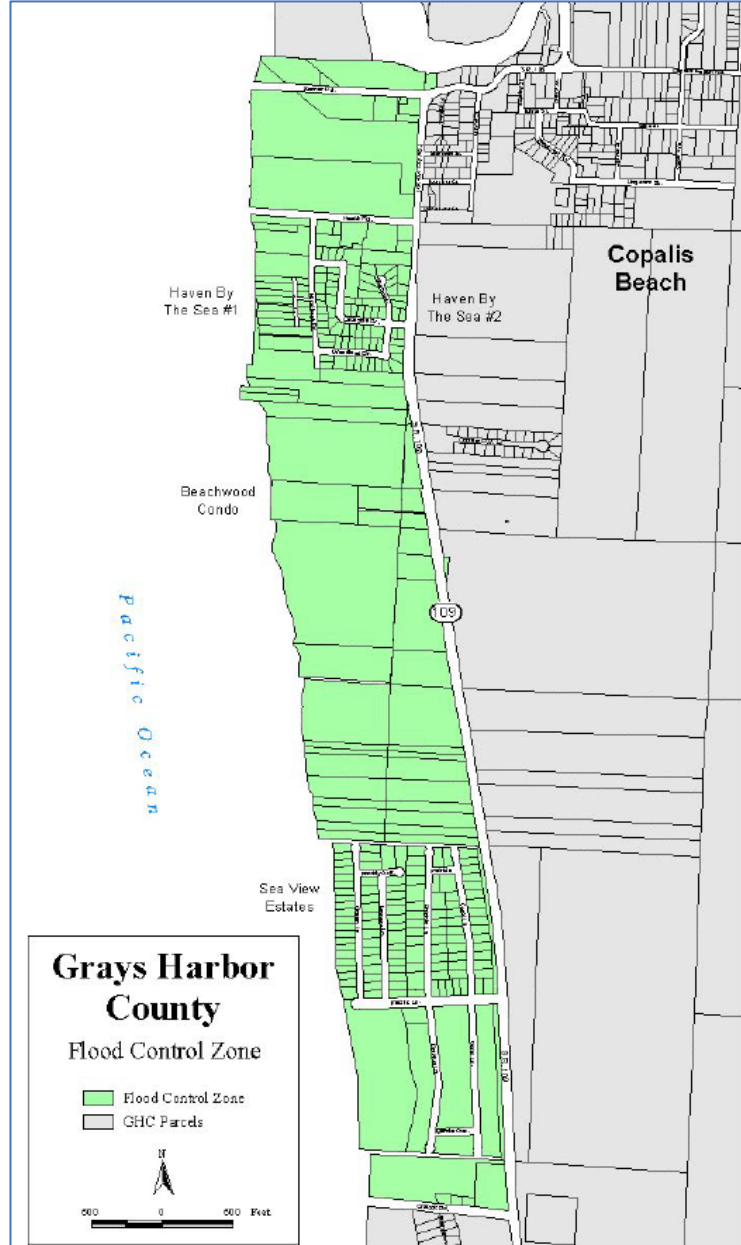
WHEREAS, pursuant to the requirements of RCW 86.15, the Board of County Commissioners published notice on June 6 and June 13, 1996 of a public hearing to be held on June 19, 1996; and

WHEREAS, public testimony was taken at the June 19, 1996 hearing and the matter was held over to July 15, 1996; and



# A3. 1996 FCZD Boundary

View interactive map [here](#).



Connor Creek Implementation Team

**SBGH-Partners**

7 of 11



# B. Perspective on Preferred Type of “Entity”

**Which type drainage/flood district?**

Diking, Drainage, and Flood Control Districts

District Type	Enabling Statute	Year Created	Purpose
Diking District	Ch. 85.05 RCW	1895	Straighten, widen, deepen and improve all rivers, watercourses or streams and construct diking system to protect land from overflow.
Diking, Drainage, and Irrigation Improvement District (or Drainage and Irrigation Improvement District)	Ch. 85.22 RCW	1933	Provide irrigation, in addition to normal powers of diking or drainage district.
Diking, Drainage, and Sewerage Improvement District	Ch. 85.08 RCW; Ch. 85.15 RCW	1913	Improve dikes, ditches, sewers, and related facilities.
Diking or Drainage Improvement District	Ch. 85.20 RCW	1917	Establish diking or drainage system.
Drainage District	Ch. 85.06 RCW	1895	Establish drainage system.
Flood Control by Counties Jointly - 1913 Act (Intercounty)	Ch. 86.13 RCW	1913	Help control flooding on a river or its tributaries that border two counties.
Flood Control District	Ch. 86.09 RCW	1937	Protect life and property, preserve public health, and conserve and develop natural resources.
Flood Control Zone District	Ch. 86.15 RCW	1961	Undertake, operate, or maintain flood control projects/storm water control projects for areas of the county.
Intercounty Diking and Drainage District	Ch. 85.24 RCW	1909	Establish diking and drainage systems or erect flood dams to prevent inundations on land located in two or more counties.

[RCW 85.05](#)

[RCW 85.06](#)

[RCW 85.08](#)

[RCW 85.15](#)

[RCW 85.20](#)

[RCW 85.22](#)

[RCW 85.24](#)

[RCW 86.09](#)

[RCW 86.13](#)

[RCW 86.15](#)

???

???

???



Source: MSRC [here](#)



# B1. Preferred Entity = Expanded FCZD (for now)

## For Now . . .

1. Seems **most expedient** (and logical) given 1996 FCZD is still “on-the-books.”
2. Expanded FCZD would result in an entity with **“standing” sooner** than forming new entity (e.g., drainage district).
3. **Implementation structure** already exists (BOCC = supervisors; County engineer = lead; Contracting, advisory committee, funding, administrative implementation mechanisms already exist).
4. Several FCZDs are active in Western WA (including Pacific County) making a **“community of peers.”**

<https://app.leg.wa.gov/RCW/default.aspx?cite=86.15.020>

## Counties with FCZDs:

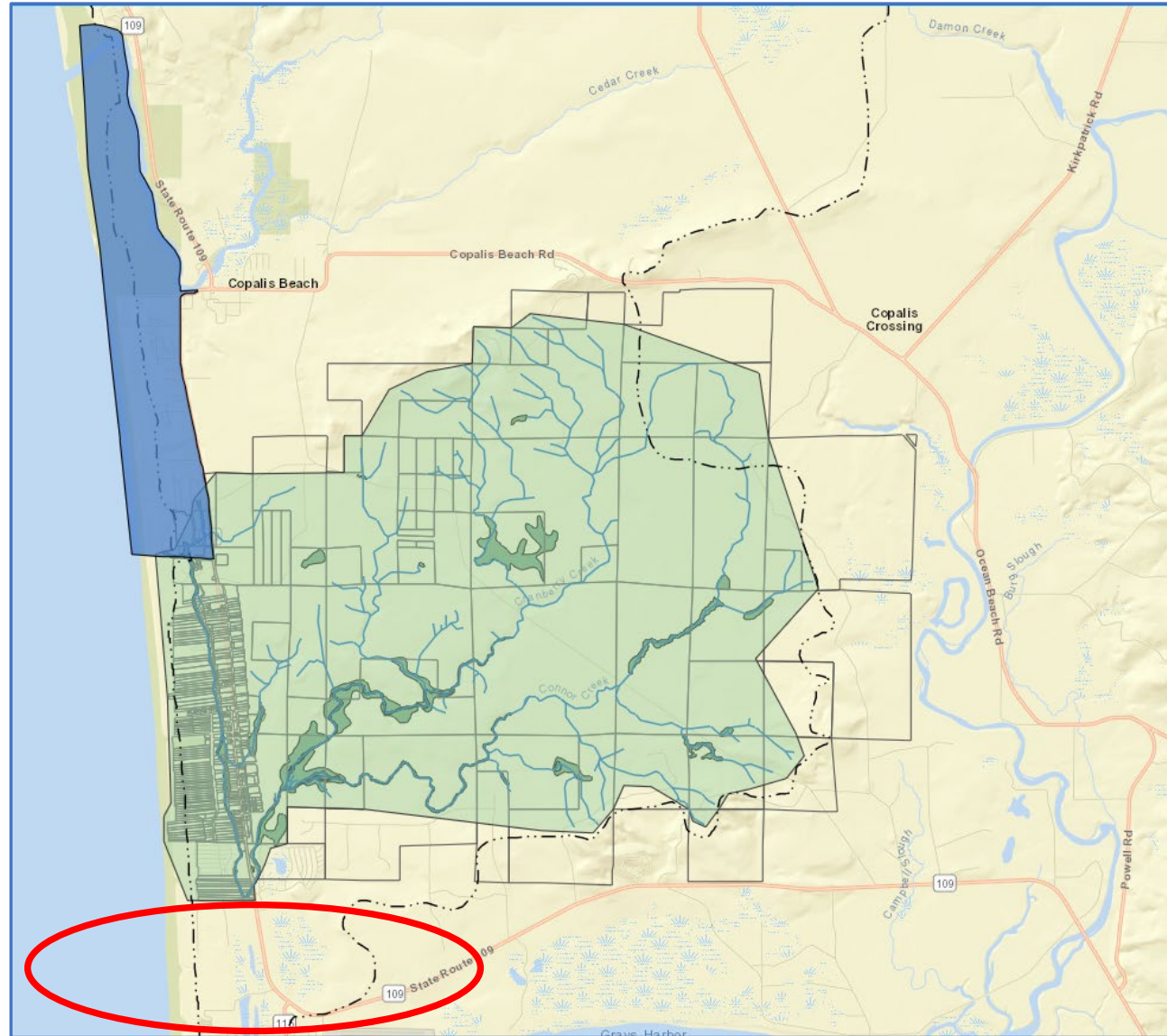
- ✓ Chelan
- ✓ Columbia
- ✓ Cowlitz
- ✓ Jefferson
- ✓ Lewis
- ✓ Mason
- ✓ Pacific
- ✓ Pierce
- ✓ Skagit
- ✓ Spokane
- ✓ Walla  
Walla
- ✓ Whatcom
- ✓ Yakima



# B2. Expanded FCZD Boundary (scale . . .)

## Initial Expanded FCZD:

1. Existing FCZD
2. Connor Creek Watershed
3. Dunes Estates





# B2. Expanded FCZD Boundary (bridges . . .)

<https://earth.google.com/web/@47.11579408,-124.1763912,3.41779126a,4125.29784153d,35y,0h,0t,0r>





# B3. Longer-Term (further expand)

## Longer-Term:

- Expand further northward to Seabrook or Pacific Beach.
- Convert county-led and administered FCZD to locally-led and administered Flood Control District or Drainage District.



From Stephen Poulakas (Seabrook), 3/25/2024

Source: MSRC [here](#)





# C. Options/Next Steps – Expanded FCZD

## Option A -- “Motion of the Board”

Step 1 – BOCC initiates creation (expansion) of FCZD by resolution.

Step 2 – Done.

### -- Immediate GOAL --

Funding ASAP for:

1. Comprehensive watershed flood mitigation investment plan
2. SR109 drainage ditch maintenance

## Option B -- “Petition of Electors”

Step 1 – Secure petition format from County Auditor.

Step 2 – Secure signatures from 25% of electors in Expanded FCZD.

- 1996 FCZD = 145 total voters (37 voters = 25%)
- Connor Creek Watershed = 281 total voters (70 voters = 25%)
- Dunes Estates = ?? Total voters (?? voters = 25%)

Step 3 – Deliver signed petition to County Auditor.

Step 4 – Auditor has 45 days to certify petition and deliver to BOCC.

Step 5 – BOCC has 40 days to act on resolution creating (expanding) FCZD as brought by petition.

Step 6 – Done.

