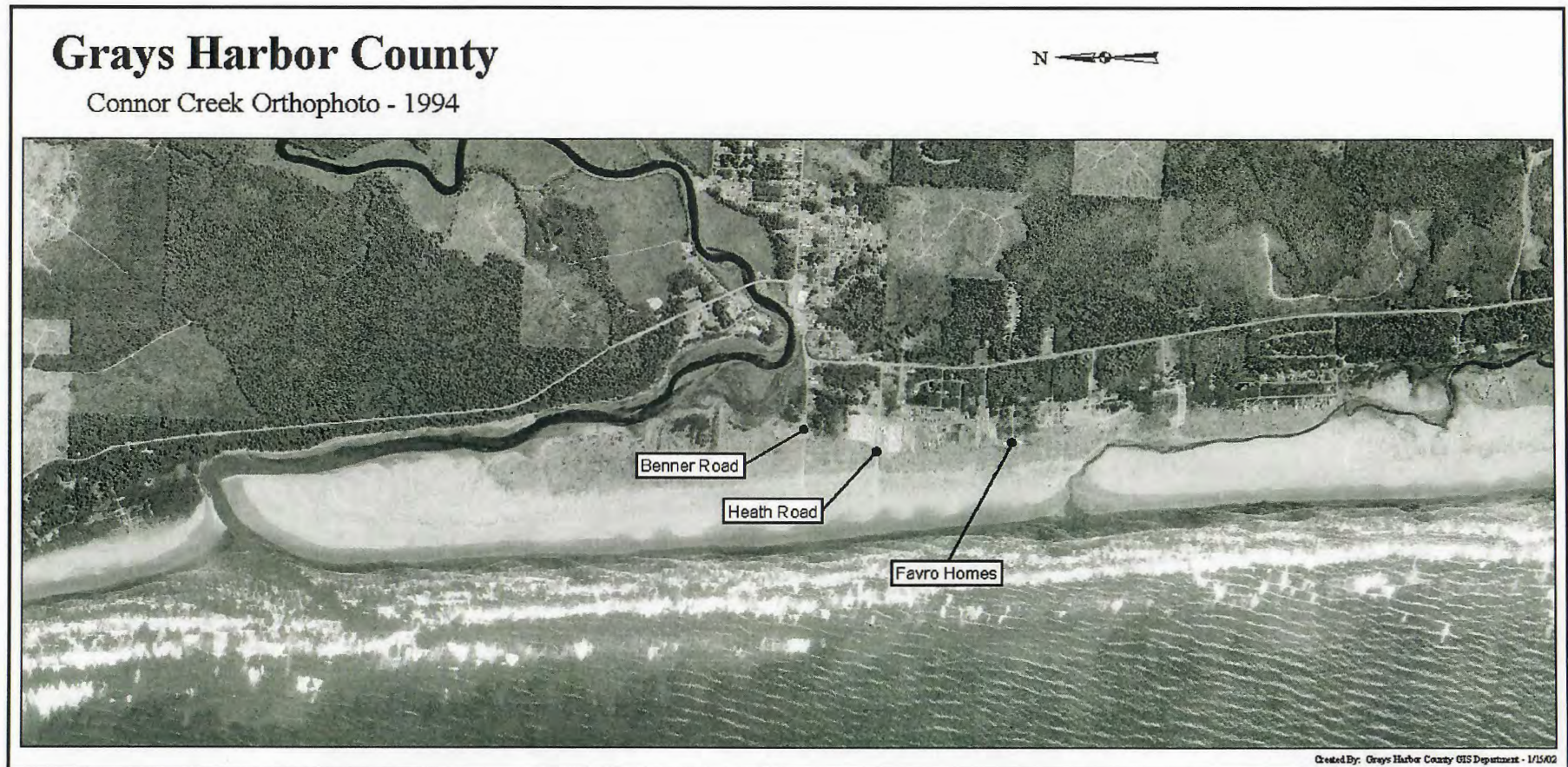


# Connor Creek July 9, 1994





# Connor Creek December 17, 1996

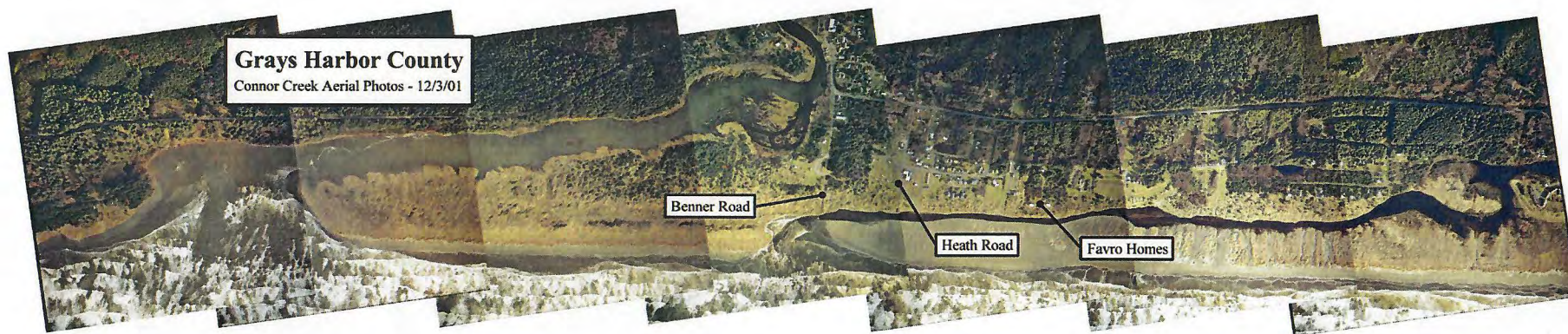




# Connor Creek November 16, 2000



# Connor Creek December 3, 2001



**Grays Harbor County**  
Connor Creek Aerial Photos - 12/3/01

Benner Road

Heath Road

Favro Homes



# Connor Creek December 11, 2001



# Connor Creek January 4, 2002

The continued erosion also threatens private property





# Connor Creek January 4, 2002

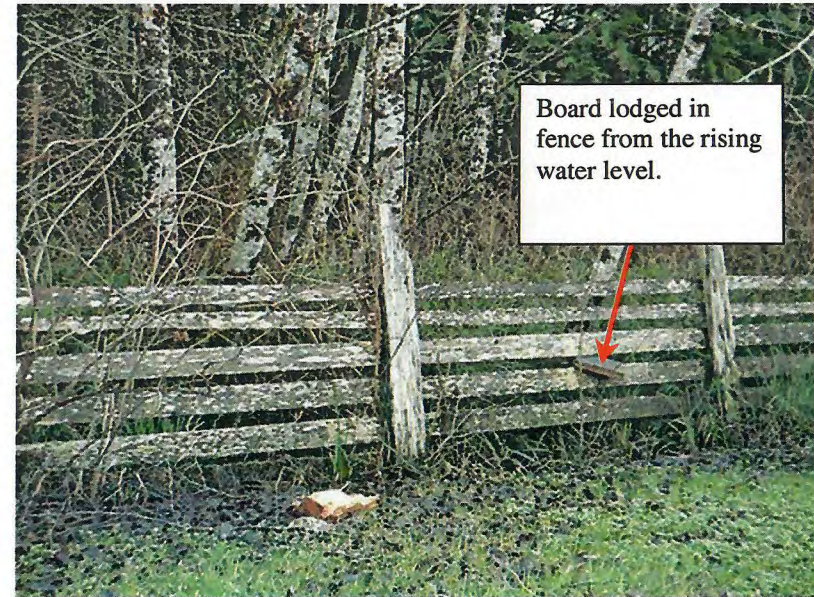
Two county roads, Heath and Benner, lost due to Connor Creek's northerly migrations





# Connor Creek January 10, 2002

Impacts to Fred Thatcher's property in Ocean City due to increased flows in Connor Creek



Board lodged in fence from the rising water level.