

# Gateway Pacific Terminal

## Operations Overview

Presentation to Multi Agency Permitting Team  
April 28, 2011



# Principal Terminal Components

## East Loop

- ☐ Rail Access & Capacity
- ☐ Railcar Unloading Station
- ☐ Stockyard
- ☐ Conveyance System
- ☐ Shiploading
- ☐ Vessel Operations

## West Loop

- ☐ Material Handling & Storage
- ☐ Service Buildings and Terminal Support

# Gateway Pacific Terminal Operations Overview

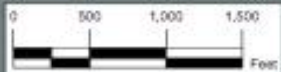
**Pacific International Terminals, Inc. is proposing to develop the Gateway Pacific Terminal at Cherry Point in Whatcom County, Washington. Designed for export and import of dry bulk commodities, the proposed terminal would include deep-draft wharf and access trestle, dry bulk materials handling and storage facilities, and rail transportation access.**

**This presentation includes a description of the terminal's functional layout and an introduction to its operation. To provide the viewer with an understanding of the physical scope of the proposed project, the presentation contains typical illustrations of the facilities, infrastructure and equipment that would be necessary to handle dry bulk commodities at the quantities proposed. These illustrations are representative of those that could be employed at the terminal; actual equipment selection and configuration will be finalized as part of the ongoing engineering design program.**





# Site Plan





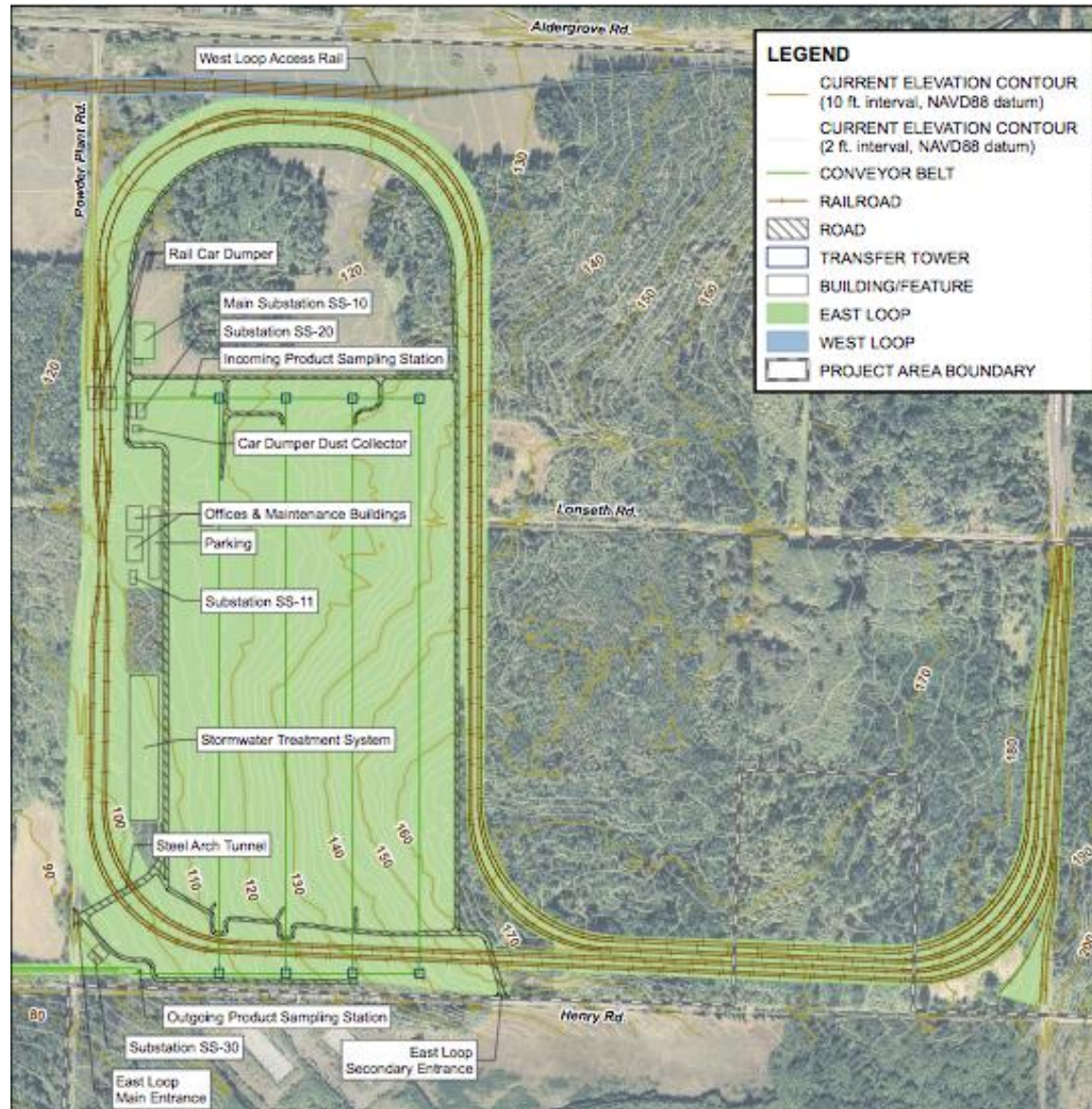


# Rail Access and Capacity



# Rail Access and Capacity

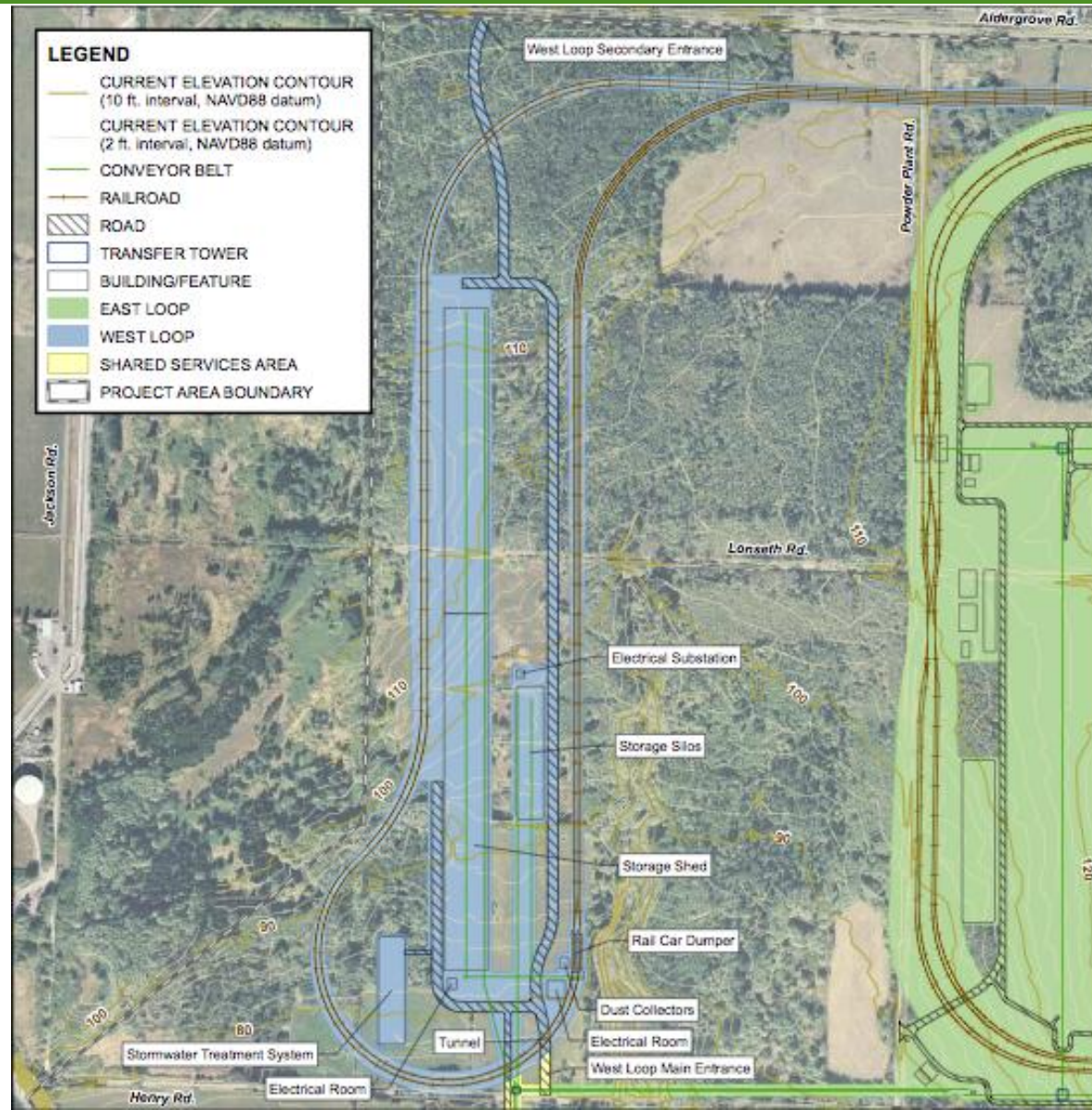
## East Loop





# Rail Access and Capacity

## West Loop



# Rail Access and Capacity





An aerial photograph of a port facility. In the foreground, a long pier extends into a body of water, with two large cargo ships (one green, one red) docked. A yellow circle highlights a small structure on a rail line in the upper left quadrant of the image. A large text box is overlaid on the center of the image.

# Rail Unloading Station



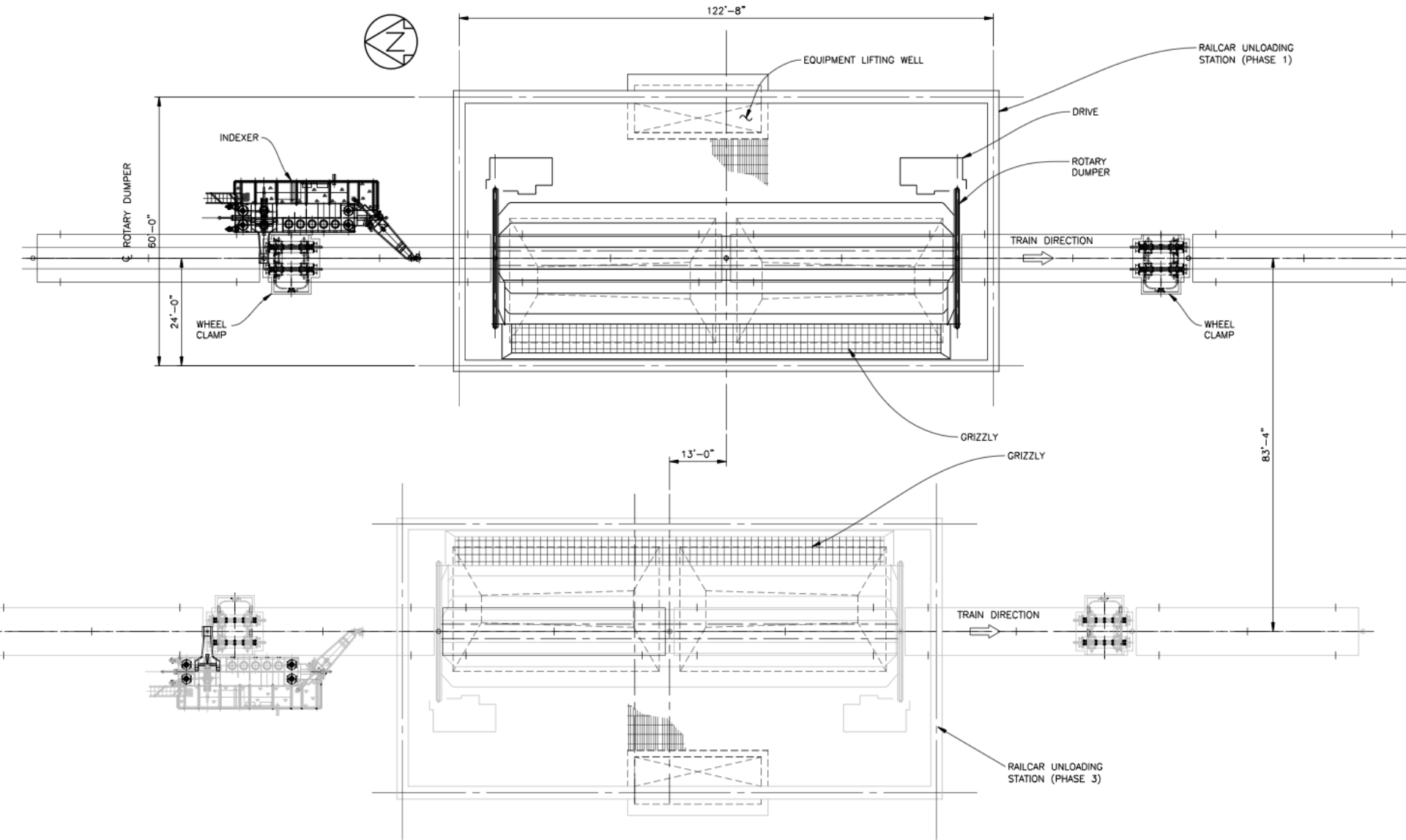
# Railcar Unloading Station



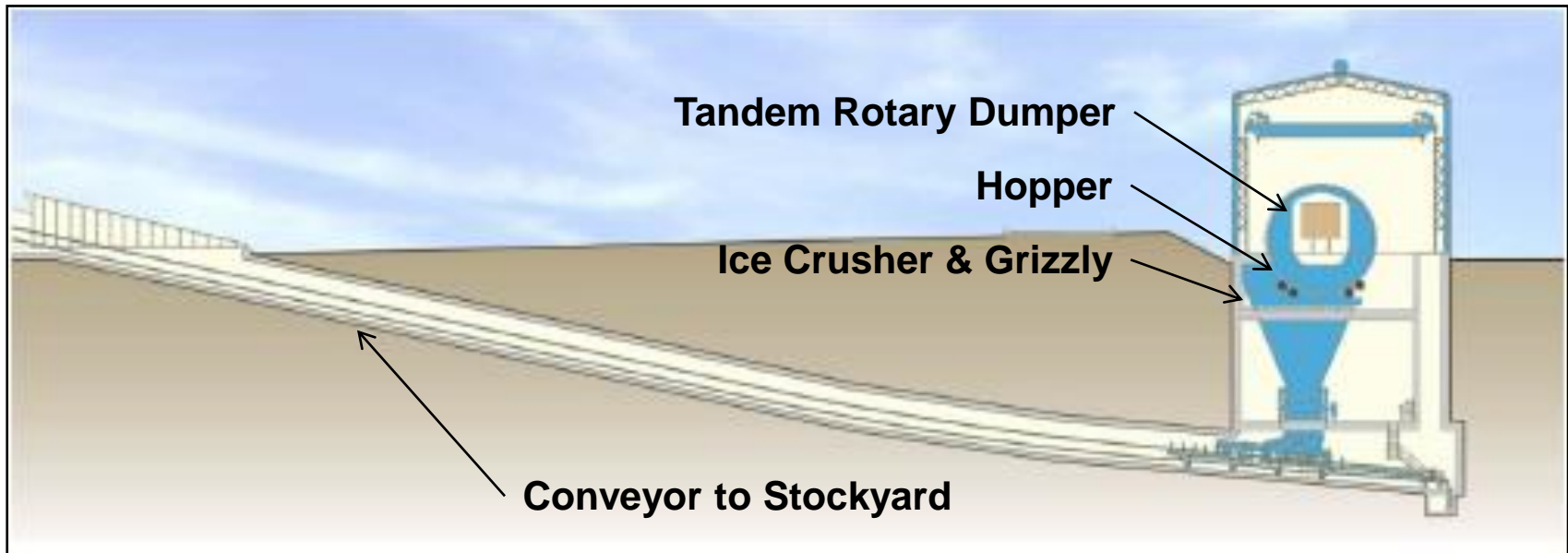
## Rotary Dumper Shed and Dust Filtration System



# Railcar Unloading Station



# Railcar Unloading Station



**Rail Unloading Shed and Conveyor to Stockyard  
(View Looking to the South)**



# Railcar Unloading Station



**Tandem Rotary Dumper**  
(Coal within a Shed, Woodchips Outside)

## Inside Rotary Dumper Shed

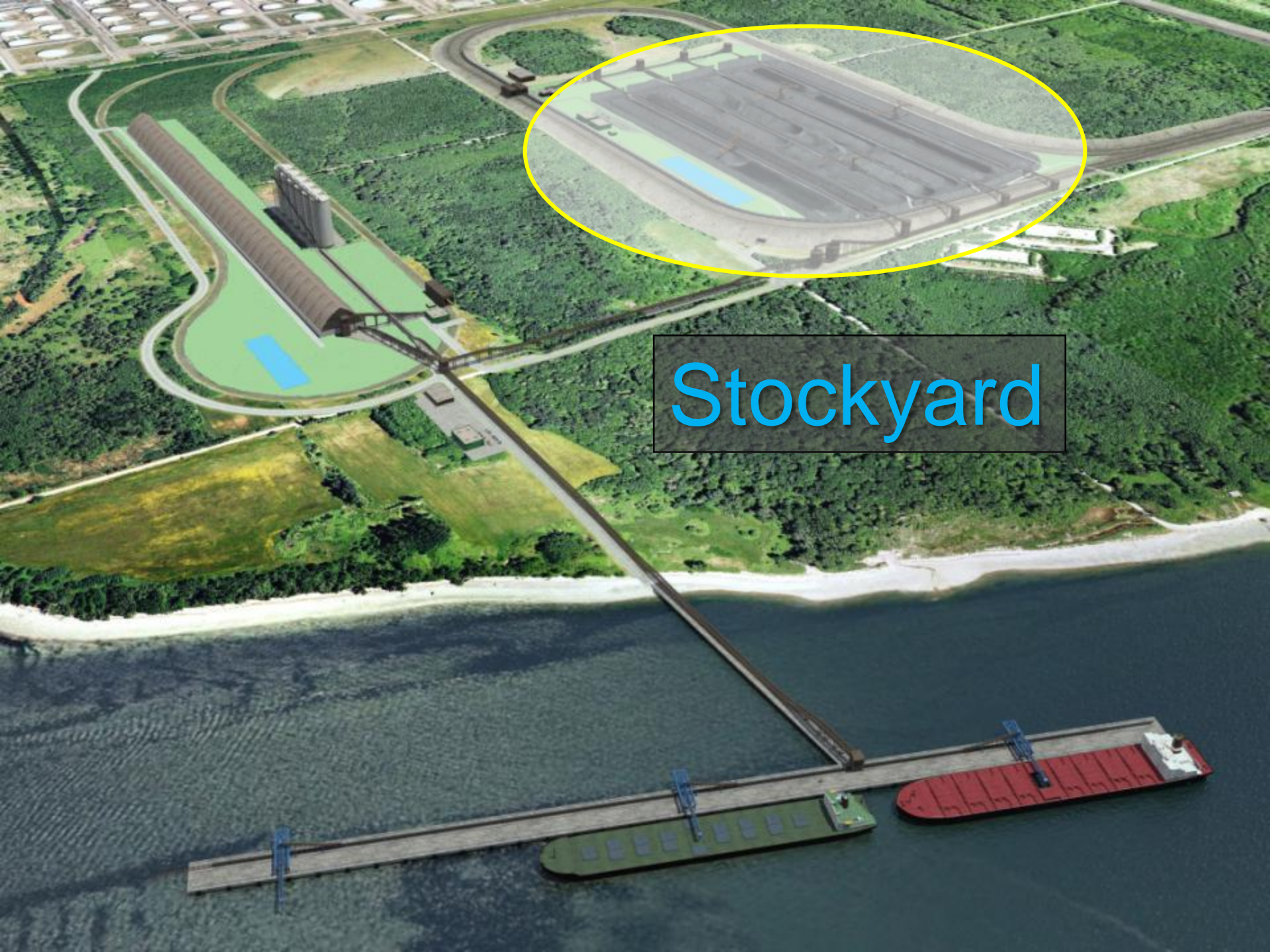


# Railcar Unloading Station



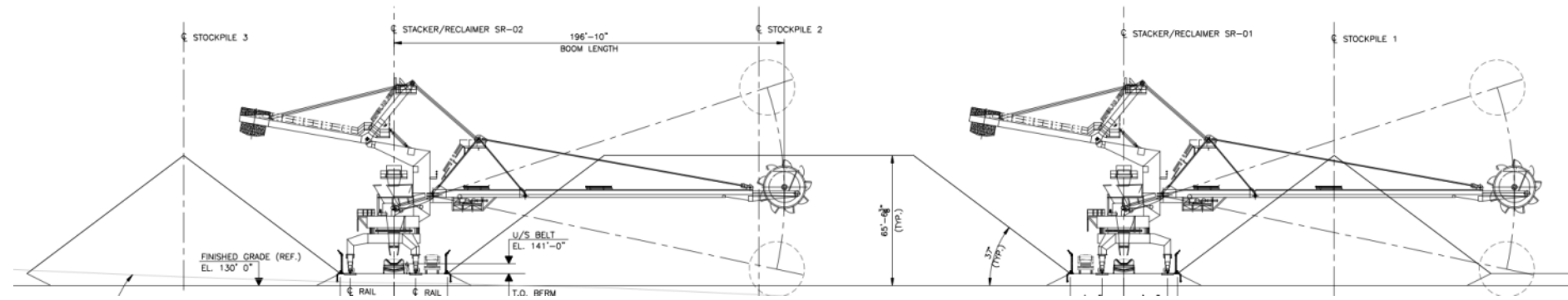
## Railcar Indexer





Stockyard

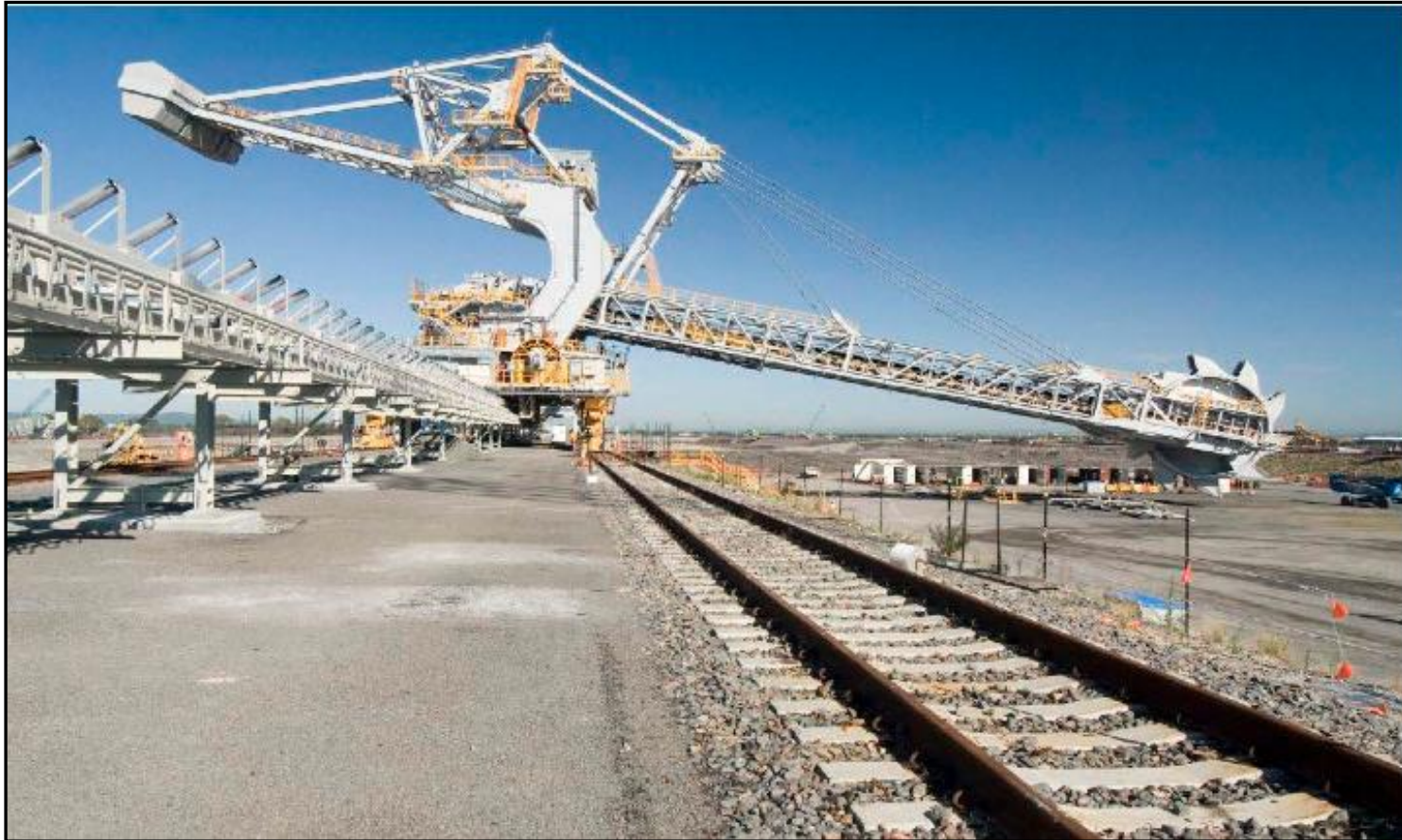
# East Loop Stockyard



## Cross Section of Stockyard Showing Stacker Reclaimers and Stockpiles



# East Loop Stockyard



**Stacker/Reclaimer**

# East Loop Stockyard



**Stacker/Reclaimers Being Commissioned**



# Stockyard



**Example of a Water Cannon (at left)  
and Fogging Cannon (below) Used in  
the Stockpiles for Dust Suppression**



An aerial photograph of a port facility. A long conveyor system extends from a large industrial building on land, across a body of water, to a red cargo ship. The facility includes several large storage tanks, a transfer tower, and surge bins. A yellow circle highlights a specific area on the land near the conveyor system.

# Conveyance System

**Conveyors,  
Transfer Tower,  
Surge Bin &  
Sampler**



# Conveyance System



**Elevated Covered Conveyor**

**Transfer Point**  
(material conveyed to top  
of tower and dropped to  
lower conveyor)



# Conveyance System

**Covered Conveyor**



**Half Covered Conveyor  
(shown to illustrate the  
conveyor inside)**



# Conveyance System

**Enclosed Gallery**  
(Under Construction)



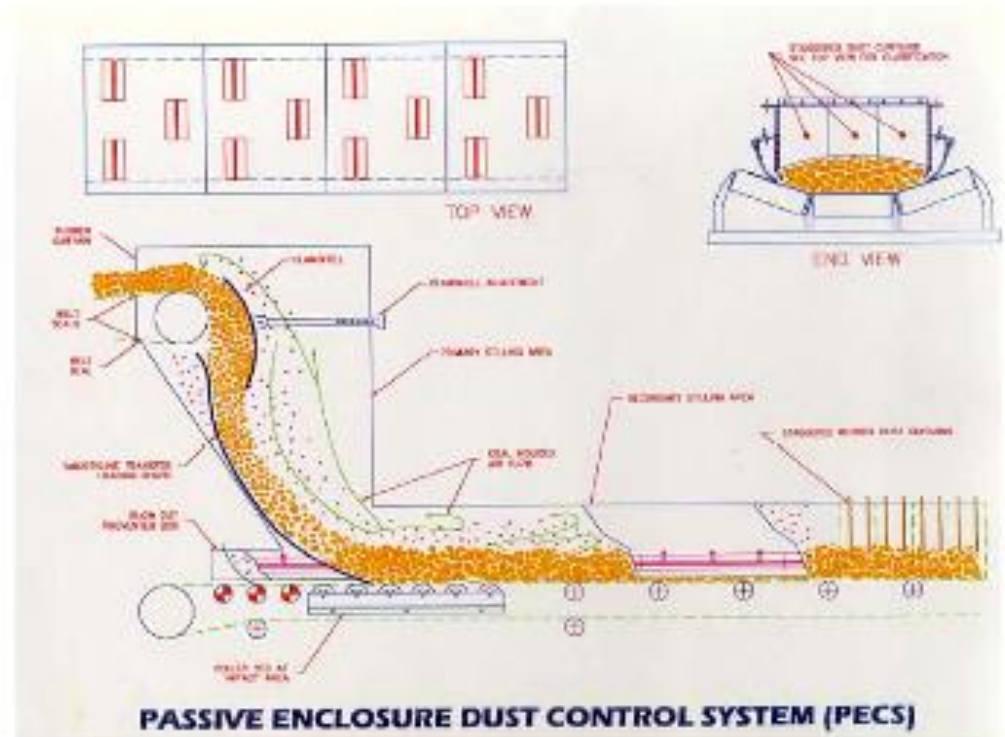
**Surge Bin**  
(Under Construction)



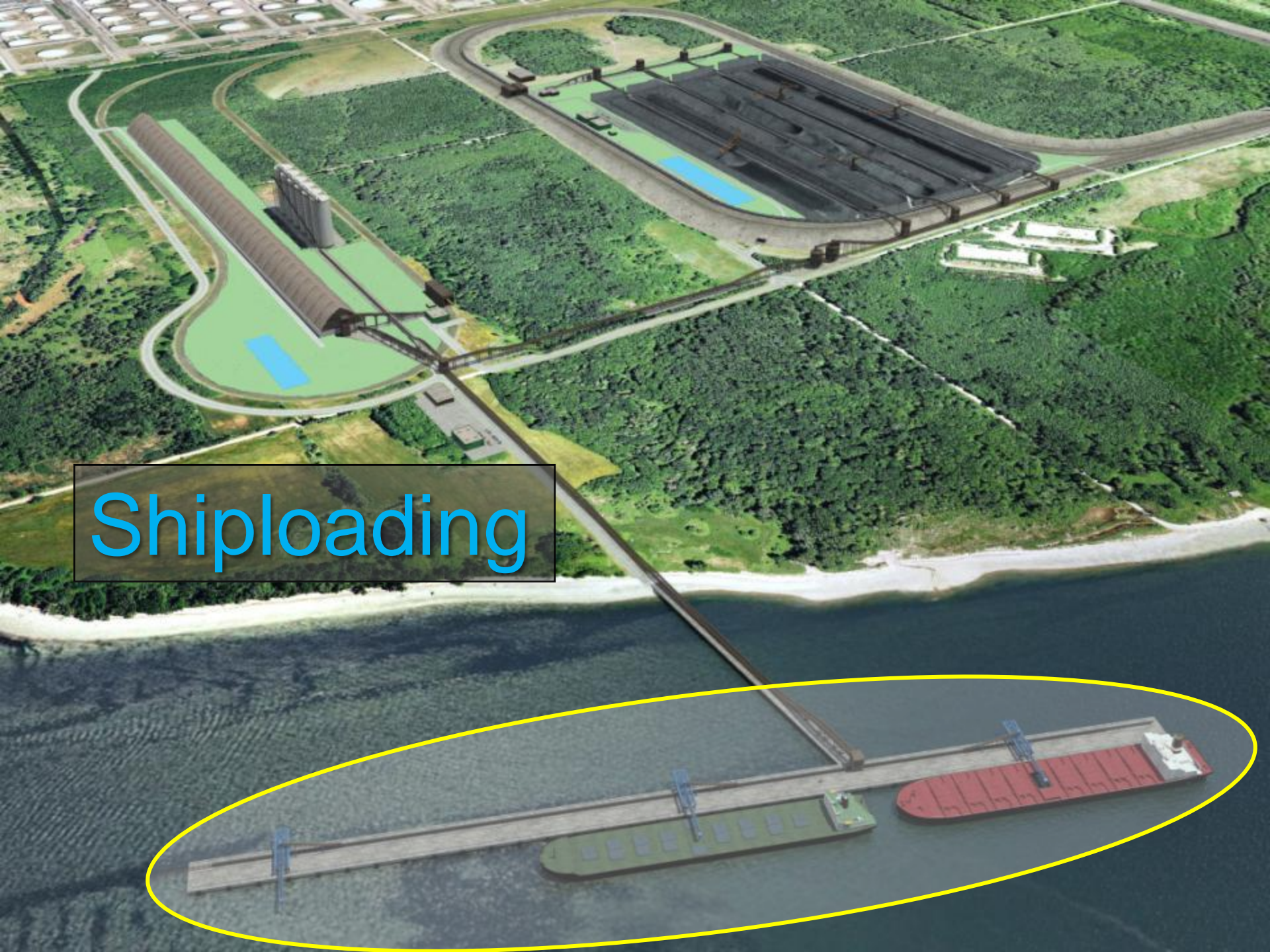
# Conveyance System



## Dust Suppression







Shiploading

This aerial photograph shows a port facility with a large industrial building, several silos, and a long pier extending into a body of water. A yellow oval highlights the shiploading area, which includes a green barge and a red cargo ship. The pier is equipped with cranes for loading and unloading cargo. The surrounding area is lush with green vegetation, and a road with several white storage tanks is visible in the upper left corner.



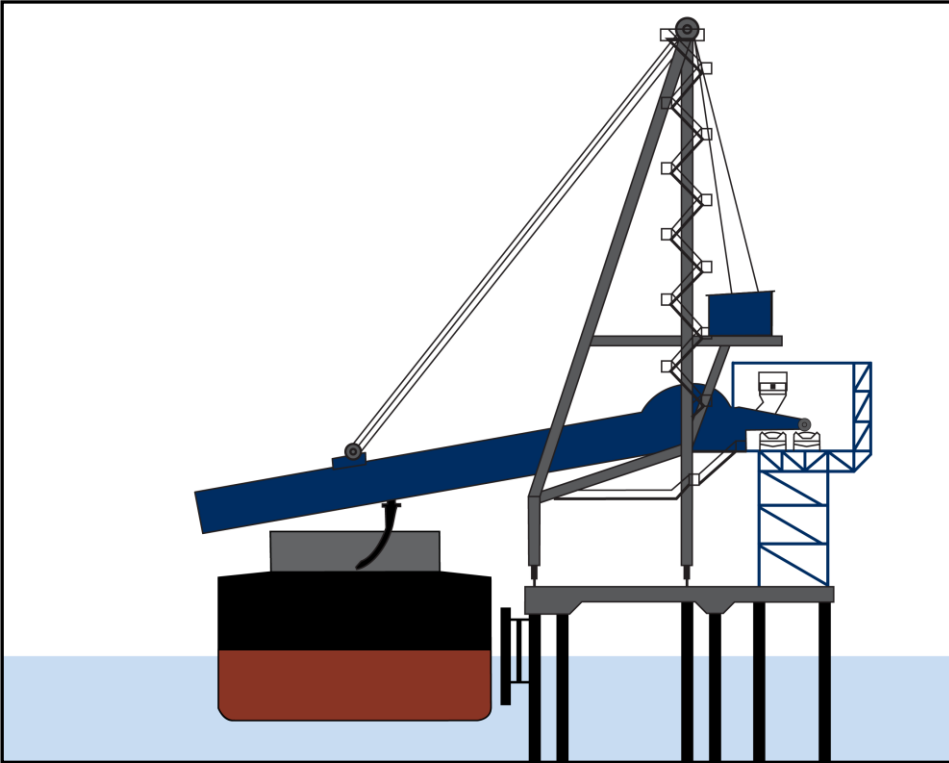
# Ship Loading



**Shiploader with Enclosed Gallery & Enclosed Boom**

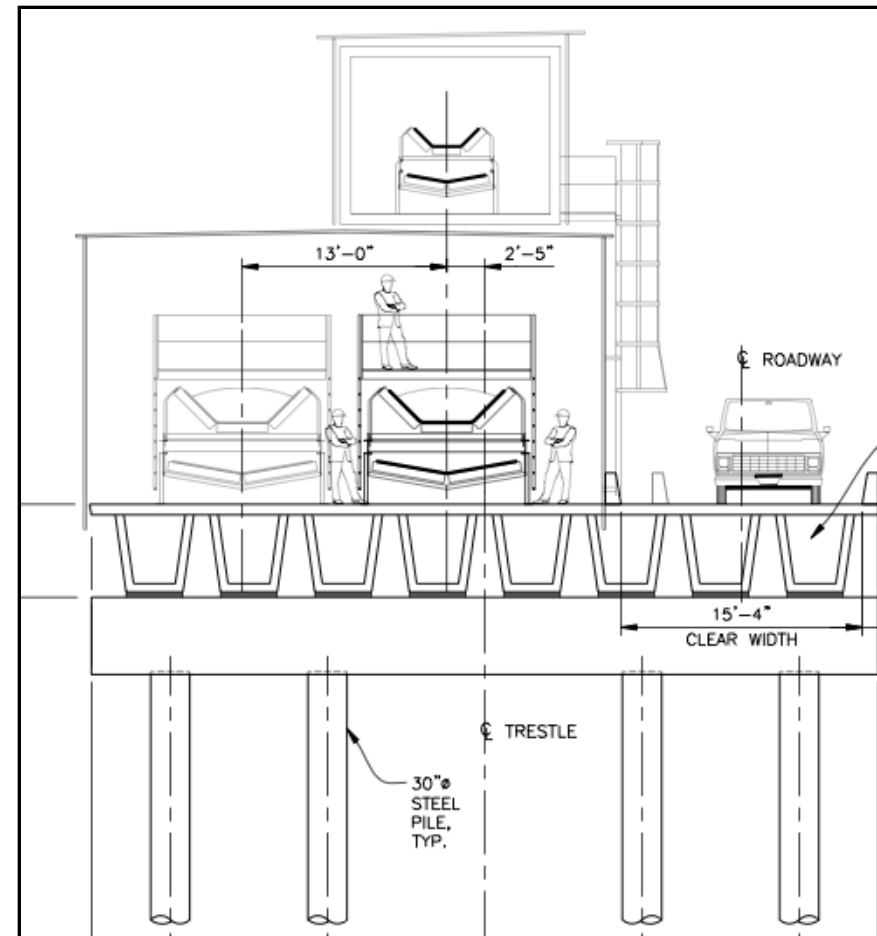


# Ship Loading



**Wharf Cross Section with  
Shiploader and Enclosed  
Galleries**

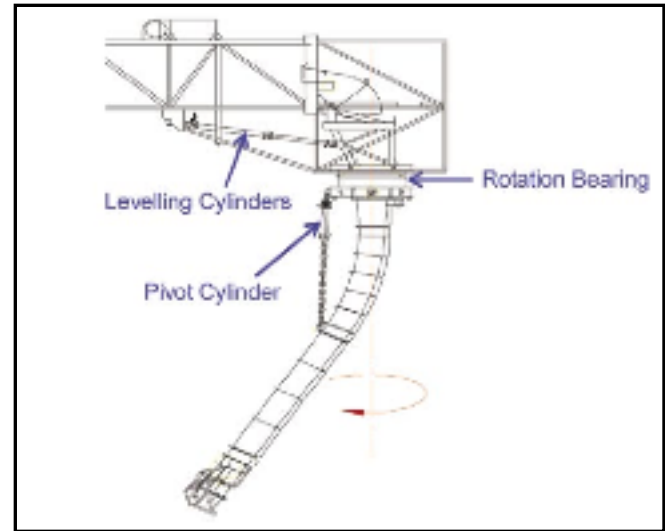
## Enclosed Galleries on Access Trestle (schematic)



# Ship Loading



**Example of Banana Spout  
Loading Coal Vessel**



**Banana Spout  
(schematic)**



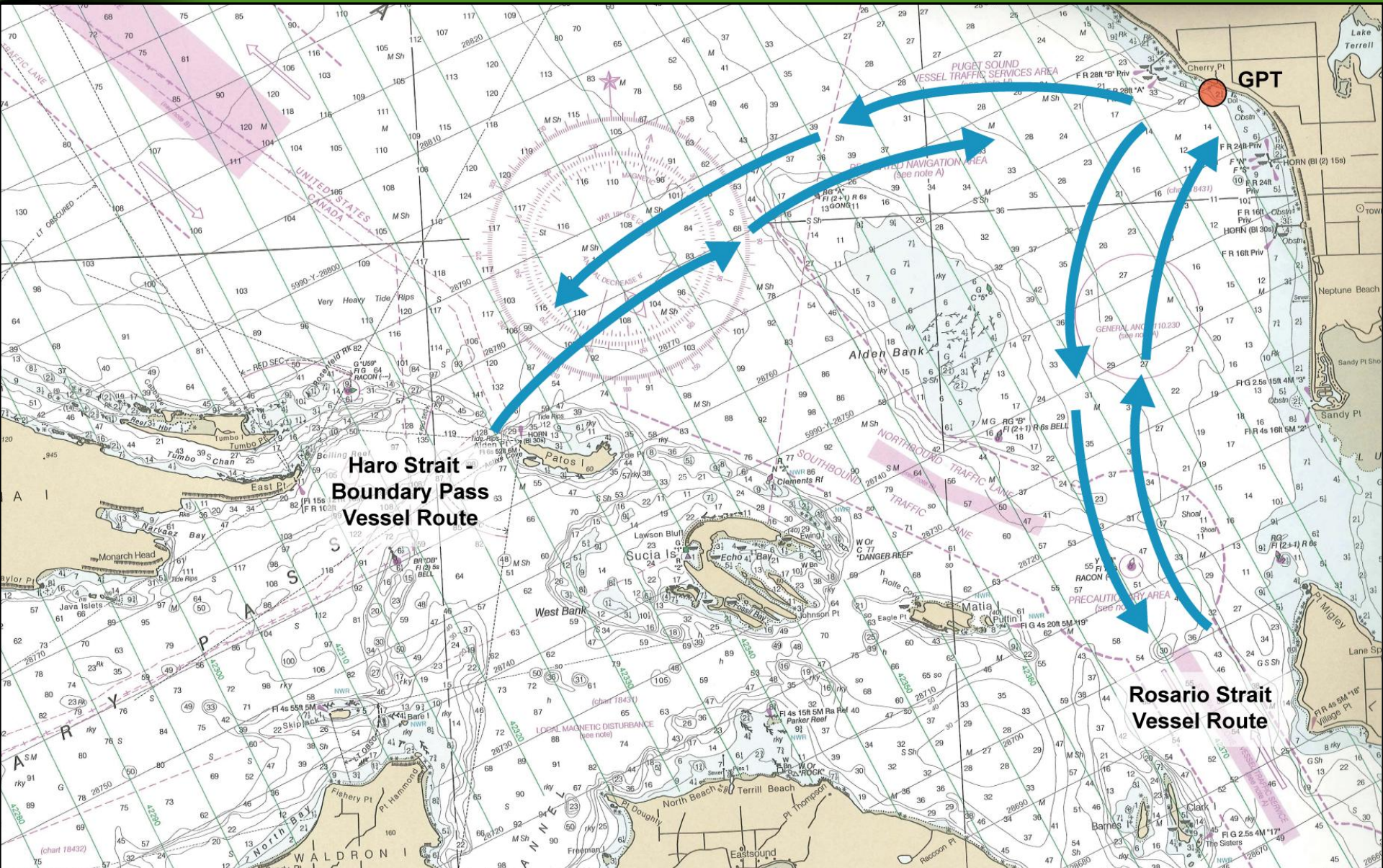


# Vessel Operations





# Cherry Point Vessel Routes





# Vessel Operations



**Tug Assist**



# Vessel Operations



**Cape Size Vessel**



# Vessel Operations



**Quick Release  
Hook and  
Mooring Lines**





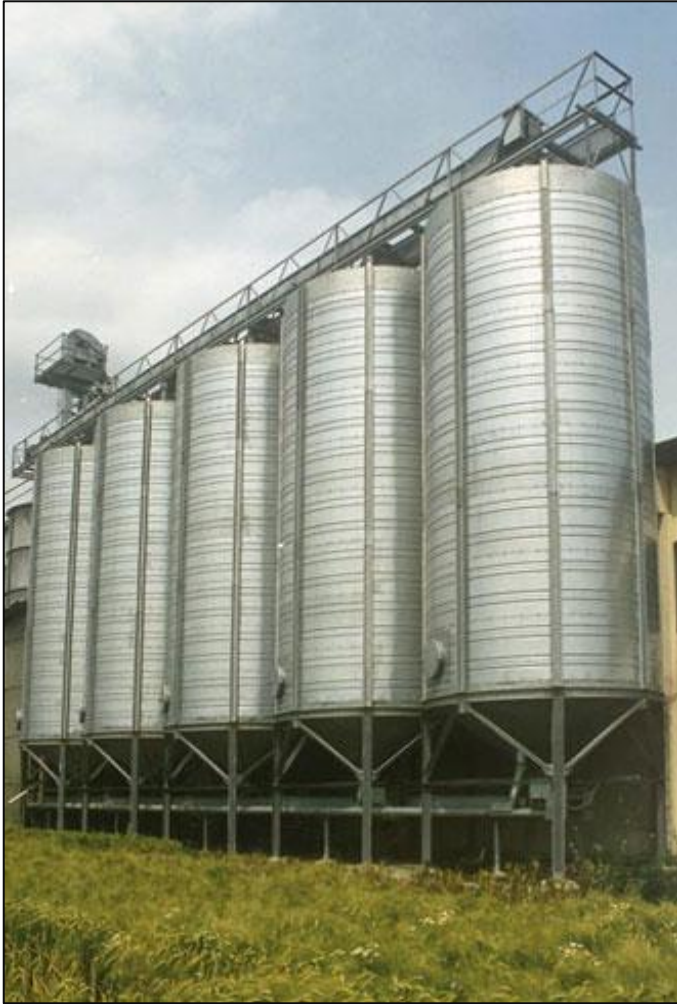
West Loop



# Gateway Pacific Terminal – West Loop

**Silo Storage**

**Potash Shed and Shiploading**



# Gateway Pacific Terminal – West Loop

**Self Unloading Vessel  
(used for import cargo)  
Note that conveyor in this  
photo is not enclosed**



**Import Material Hopper  
Located on the Wharf**





# Gateway Pacific Terminal – West Loop



**Railcar Loading with Import Material**



# Pacific International Terminals

A Carrix Enterprise

AGILITY. COLLABORATION. COMMITMENT.